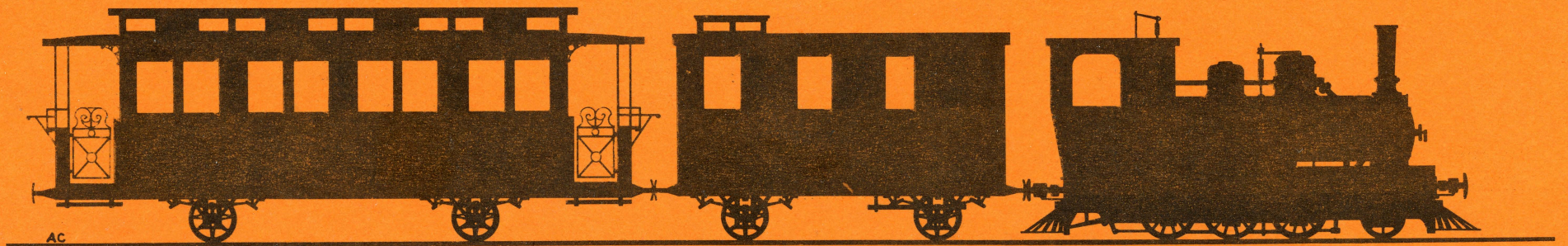


# smalsporsmateriel.





Materieloversigt:

RNJ	1-3	Jung	1900, udr. 1935-37
FSB	7	Maffei	1912, 1924 RNJ 7, oph. 1950
{HBJ	1-4	Jung	1898/1900, oph 1930
{KEJ	1-3	"-	1898, oph 1930
HAI	M 81-2	Frichs	1934, 1939 DBJ M 4-5, oph 1964/68
{DBJ	M 1-2	Frichs	1935, oph 1968(M 1), M 2 brændt 1958
{DPJ	M 3	"-	1938, oph 1968
DBJ	M1 7	Frichs	1935, oph ca 1953-4.
{AGJ	M 21	Triangel	1930, udr. 1955
{RAJ	M 11	"-	1930, udr. 1955
DPJ	M1 9	Frichs	1938, oph. 1964
HAI	D 1	"-	1934, 1939 DBJ 10, oph 1968 (= DBJ 8)
FSB	A 1-3	Skabo	1890, oph. 1924?
RNJ	11	Rønne	1911, udr 1949/50
HTB	A 2-3	Scandia	1905, udr. 1929
FSB	E 2	"-	1905, 1924 RNJ 9?, udr 1949-51
FSB	E 3	"-	1908, 1924 RNJ 8?, udr 1949-51
KEJ	D 1	"-	1915, oph 1930?
FSB	B 1-2	Skabo	1890, 1911 kun postvogne, udr. 1924
RAJ	Da 326	Rønne?	1911, 1968 til Ålholm museum
RAJ	Qb 471-4	Rønne?	1911, udr. først i 50'erne
RAJ	Qa 461-2	Rønne?	1911, " " " "
FSB	C 9-11	Scandia	1903/04, udr. 1924?
FSB	C 21-22	"-	1914, 1924 til RNJ? (bænkevogne)
HBJ	F 40-1	"-	1910, udr. 1929
HBJ	H 95-6	"-	1910/13, udr. 1929
FSB	C 23-4	"-	1914, udr. 1924?
{HBJ	G 160	Scandia	1910 } udr. 1929
{G	161-2	"-	1913 }
RAJ	Rb 401-7	Rønne	1912 (401-4), 1916 (405-7), udr.?
HTB	J 82-3	Scandia	1901, udr 1929
FSB	D 21-2	"-	1903, 1925 til HTR, udr 1929
{RAJ	R 371-5	Belgien	1912, udr.?
{RAJ	R 376-7	Rønne	1912, udr.?
RAJ	Ra 397	Rønne?	1911? udr før 1950?
HTB	tankvogn	Scandia	1911, udr 1929?
DBJ	1 (plov)	"-	1944, udr 1968

Industrimateriel:

DSSF	loko	Pedershåb	1939, sporvidde 682 mm
VBV	D 4-5	Frichs	1947, sporvidde 785 mm
tipvogn,		Scandia	1894, sporvidde 500 mm?
roevogne		"-	1893, sporvidde 685 mm?

Forkortelser:

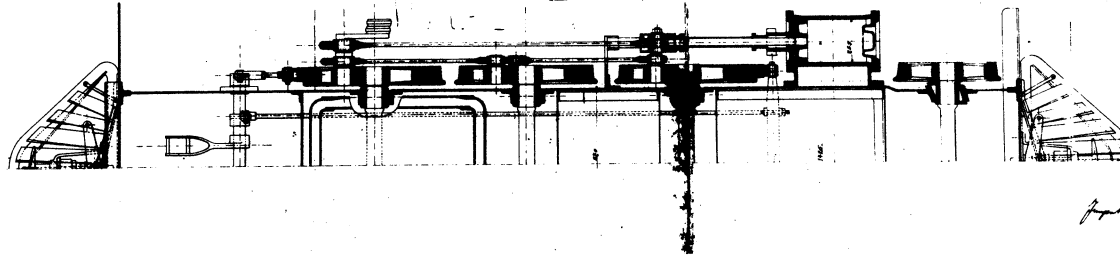
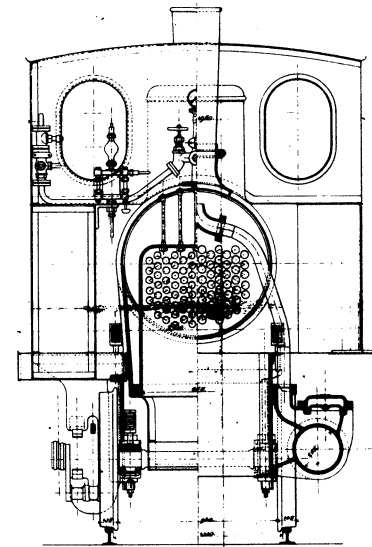
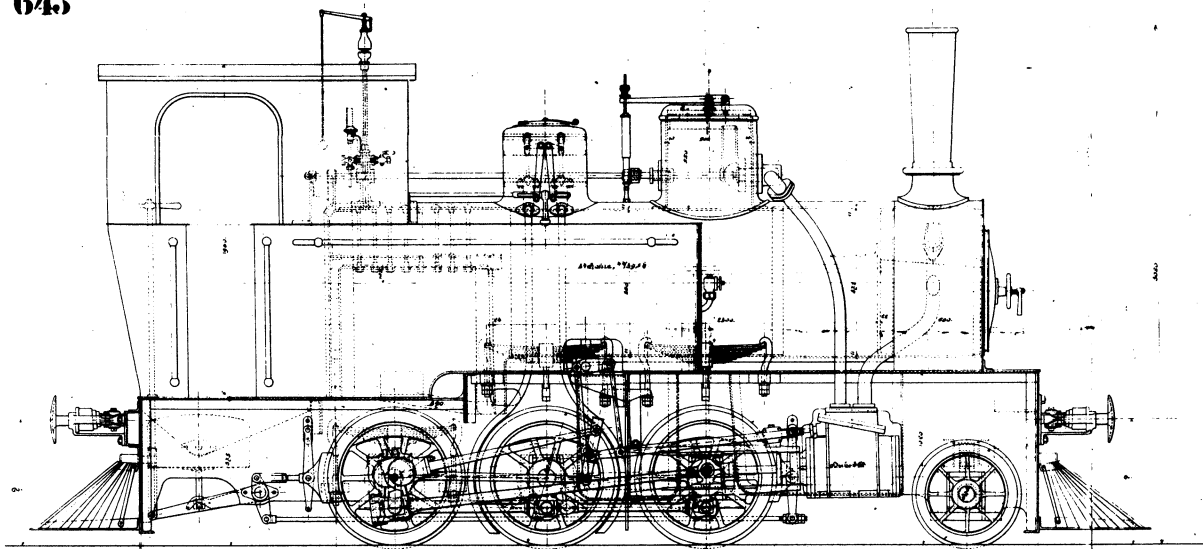
RNJ	Rønne-Nexø Jernbane
FSB	Frederikshavn-Skagen Banen
HBJ	Horsens-Bryrup Jernbane
KEJ	Kolding-Egtved Jernbane
HAI	Haderslev Amts Jernbaner
DBJ	De Bornholmske Jernbaner
AGJ	Almindingen-Gudhjem Jernbane
RAJ	Rønne-Alling Jernbane
HTB	Horsens-Tørring Banen
DSSF	Dansk Svovlsyre og Superfosfat Fabrik, afd. i Aalborg
VBV	Vand-Bygnings Væsenet, Agger
Jung	Arnold Jung, Jungenthal (Tyskland)
Maffei	J.A.Maffei, Hirschau bei München
Frichs	A/S Frichs Fabrikker, Aarhus
Triangel	De forenede Automobilfabrikker, Odense
Skabo	Skabo Jernbanevognfabrikk v. Oslo
Rønne	Pornholms Maskinfabrik, Rønne
Scandia	vognfabrikken Scandia A/S, Randers
Pedershåb	Pedershåb Maskinfabrik, Brønderslev

I dette tegningshefte har vi samlet et udvalg af tegninger af smalsporsmateriel, som gennem ca 80 år har trafikeret danske smalsporsbaner.

Da det forhåndenværende tegningsmateriale er ret ufuldstændigt, har vi valgt at samle et repræsentativt udsnit fra flere baner. Desuden er enkelte industrilokomotiver samt tip- og roevogne medtaget. Størstedelen af tegningerne er gengivet i ca 1:45, enkelte er dog af pladshensyn fotograferet ned til ca 1:87. Tipvognen er desuden gengivet i ca 1:26 også, remisen fra Åkirkeby er i ca 1:100. En tak skal her rettes til H.C.Larsen, Centralbiblioteket i Rønne, for stor hjælpsomhed med udlån af størstedelen af de bornholmske tegninger. Bent Hansen, Nr.Bjert (Industribaneklubben) har venligst stillet tegning af DSSF-loko til rådighed. Ing. Andersen, Scandia, har været behjælpelig med udlån af tegningerne fra Scandia. Karl Johan Joensen har fremskaffet tegningerne fra Frichs. Størstedelen af oplysningerne i materieloversigten stammer fra H.G.Alkjær, Holte og Jesper Reinfeldt, Slagelse. Forsidetegningen er lavet af Asger Christiansen, Aarhus, og forestiller et RNJ-tog først i århundredet. Dette tegningshefte er udgivet af Jydsk model jernbane Klub i Aarhus og kan erhverves ved at indbetale 28,- på giro nr 1 30 85 72, JMJK Nørre Alle 79, 8000 Aarhus C.

Aarhus, januar 1980  
Kaj Stender Niels J. Hansen

643



ARN. 1870 G.  
Locomotivfabrik  
Jungenthal  
A. Kappeler & Söhne (Inventoren)

Jungenthal bei Riedheim, 1. September 1871.  
Kappeler

Maße in mm.

Dimensions in mm.

äußere Durchmesser	1950
Innenradius	500
Waldschraube	800
Glaskamerschraube	1850
Dampfdruck	10 Atm.
Dampfzylinder	800
Stoßfläche	100
Speiseräume	600 l.
Wasser	500
Leistung ca.	100
Wassergewicht ca.	15
Wasser	1000

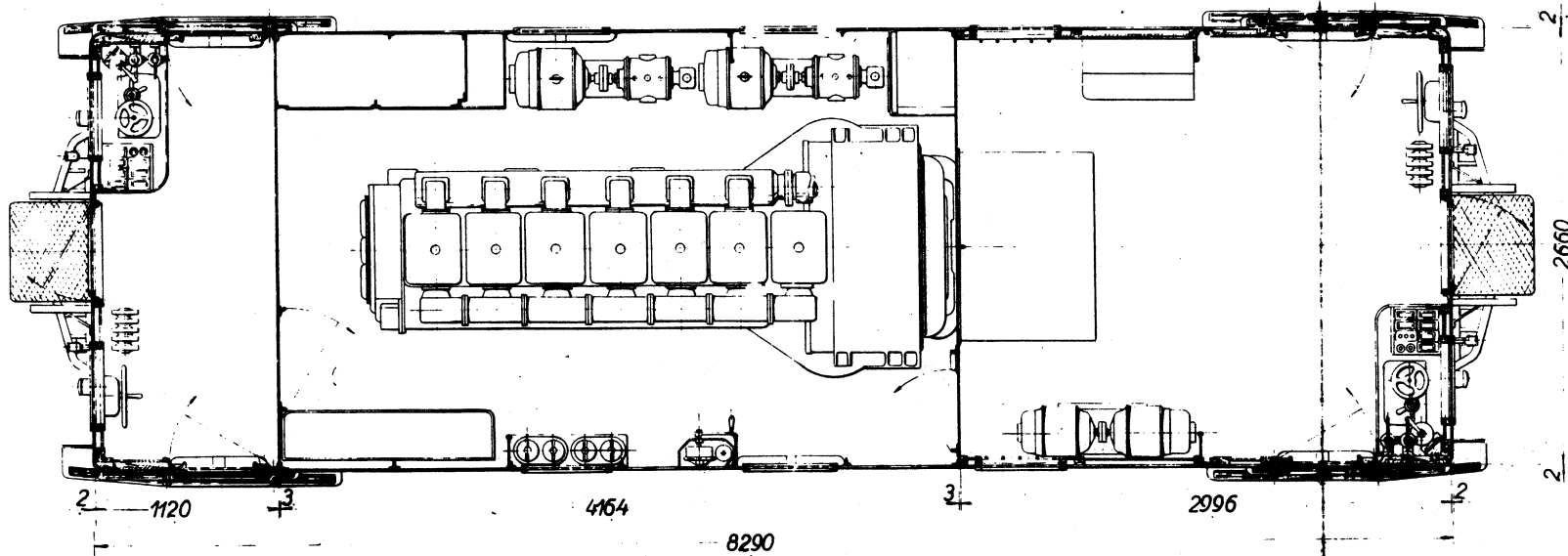
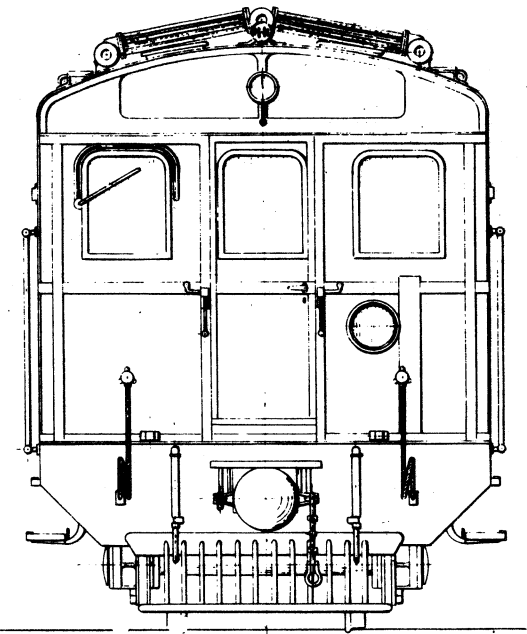
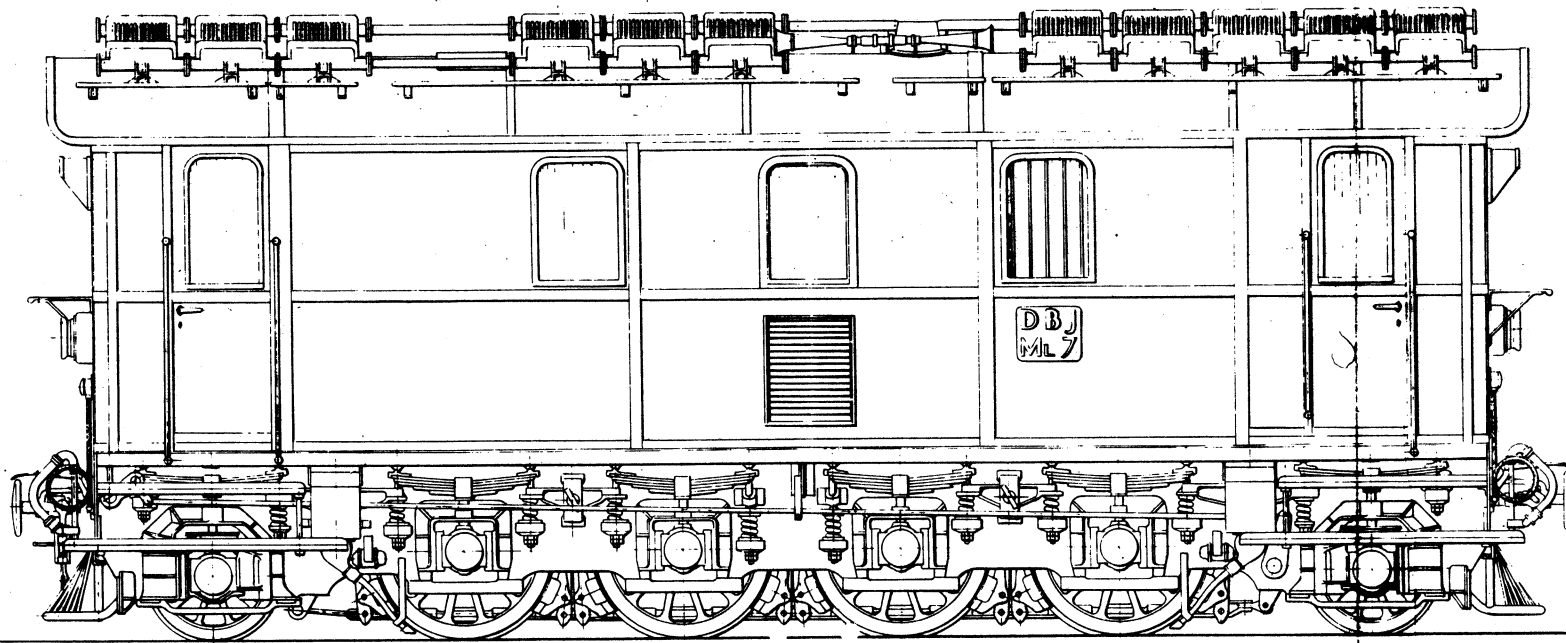




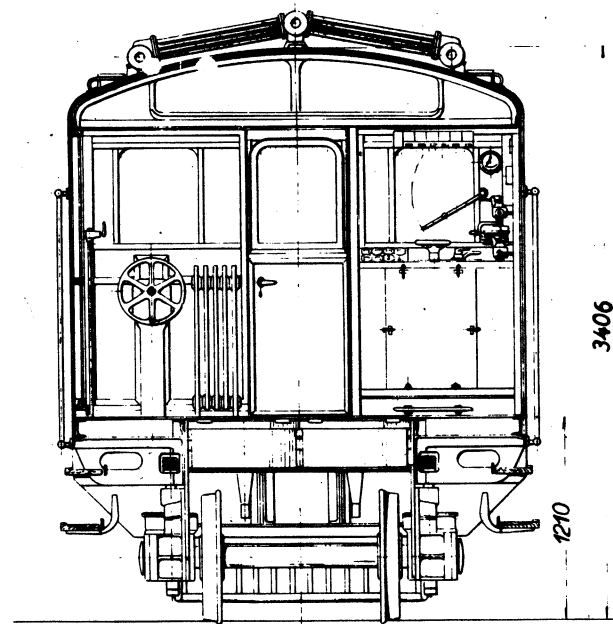
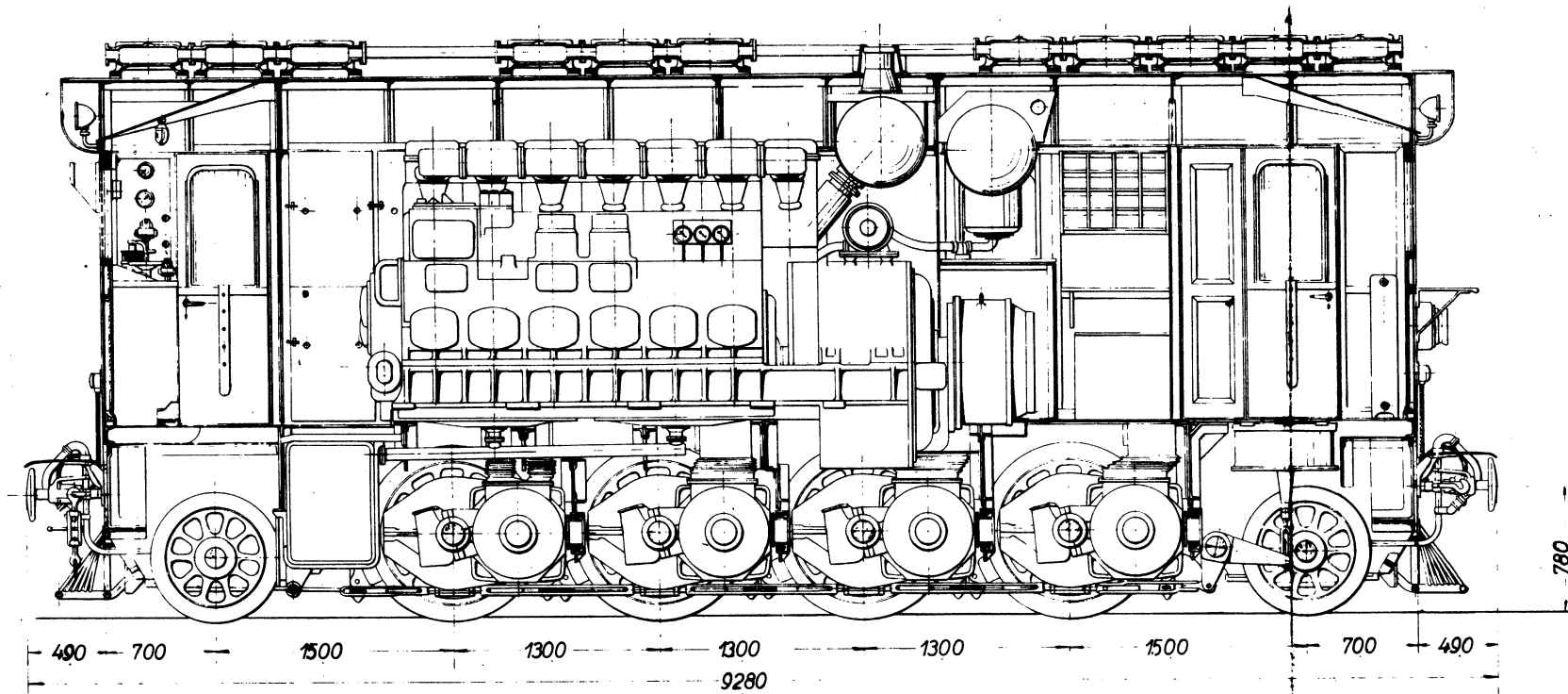






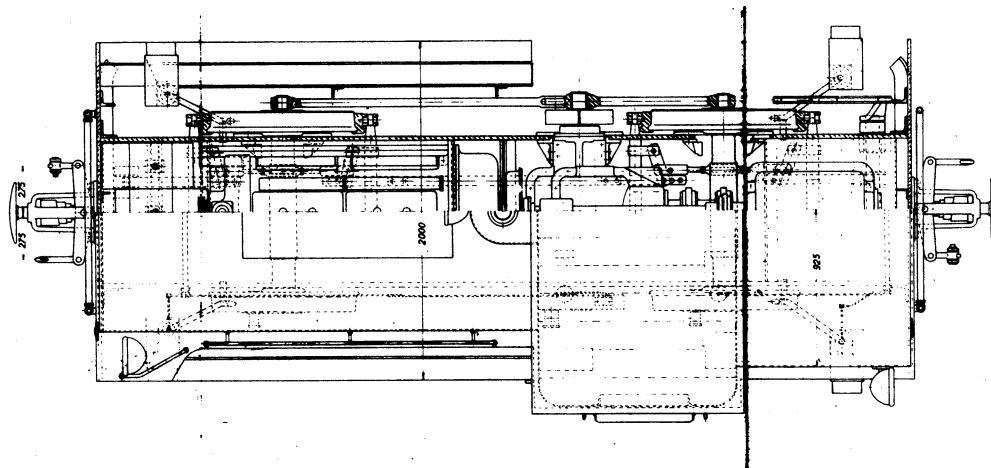
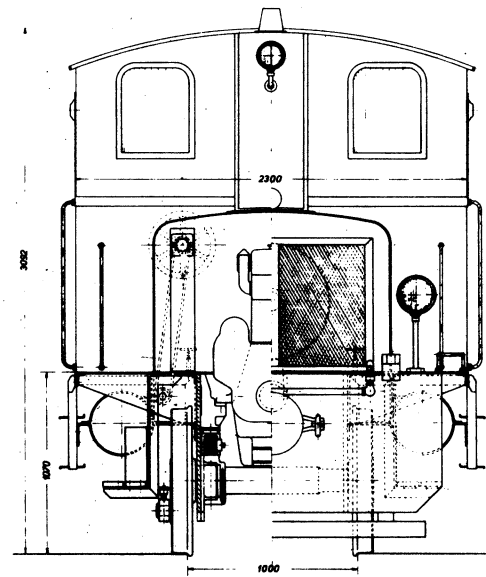
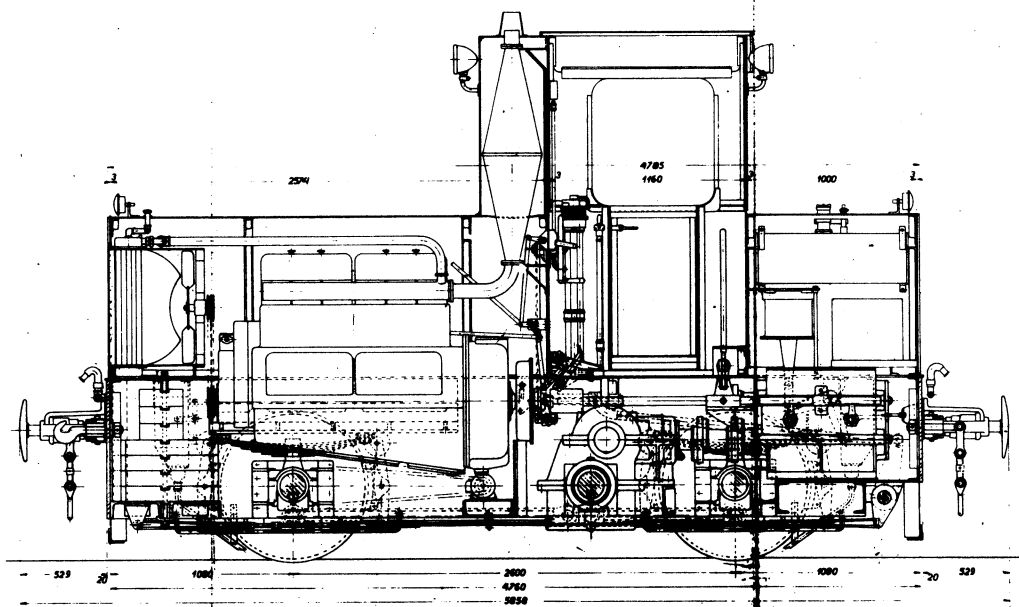


DBJ ML 7

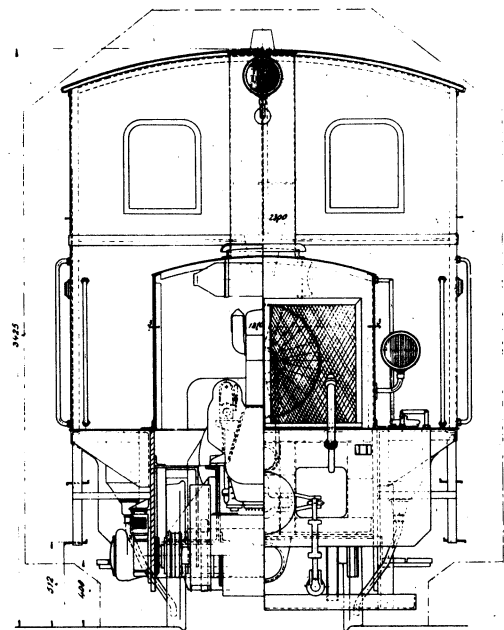
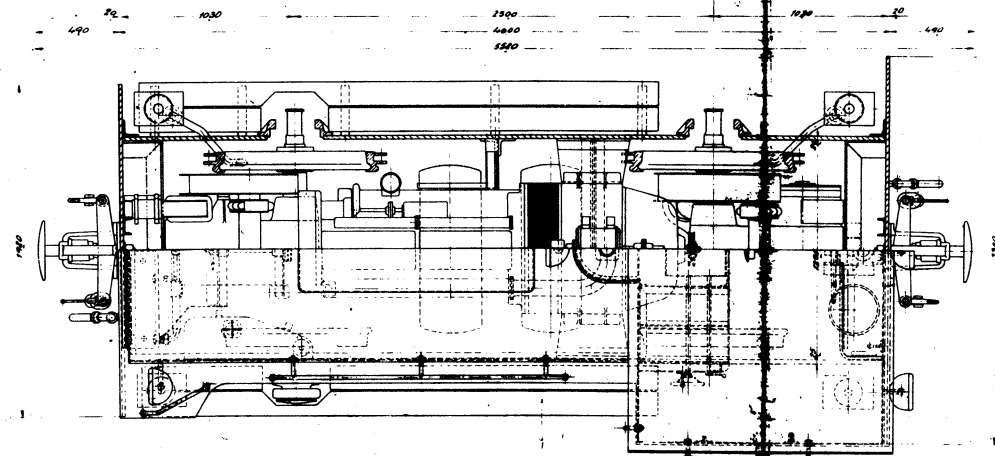
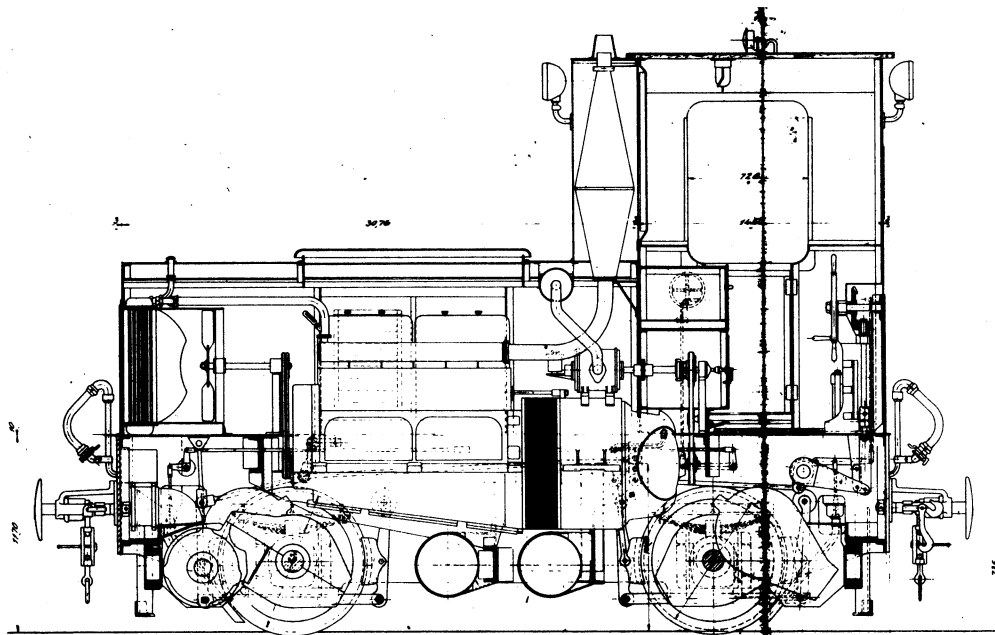


FORBILDRINGE									
<b>A/S FRICHS AARHUS</b>		MAALESTOR	TEGNI	RE					
		1:20	KAL						
			REV.						
			DATE	26-8-36					
			TEGNI & NR						
<b>DIESEL.ELEK. 40/450 HK.</b>					<b>134L - 1.02</b>				
<b>MOTORLOKOMOTIV</b>					INDEX#				



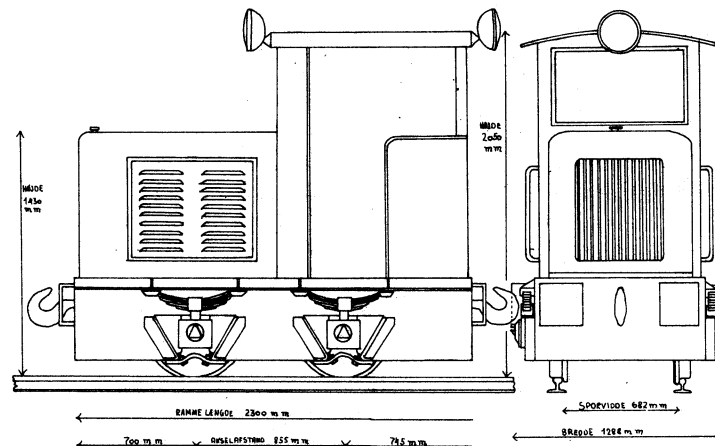


DBJ ML9



Dato:		Forskrifter:		Måsstok:	
<b>1/2 FRICHS AARHUS</b>					
<i>Samlingstegning</i>					
<small>Samlet af 175-17615, Børgmesteren</small>					
Udgave af:	R. 7.	Udgave:	1:10	Blad nr.:	1291-142
LIT.					

HAJ D1

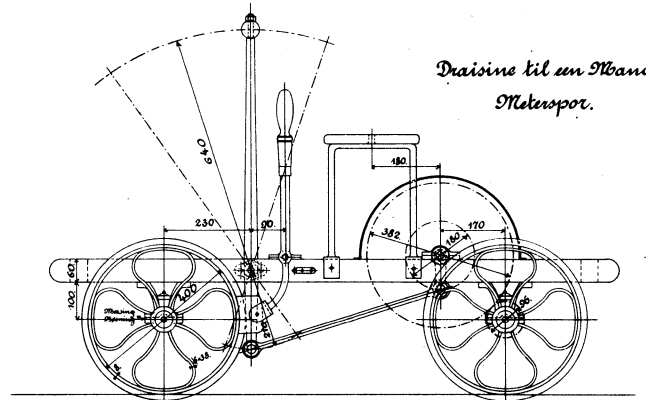


PROJEKCIJA	PROJEKCIJA
BRANJE	BRANJE
DATA	DATA
TEMA	TEMA
OPIS	OPIS

DSSF

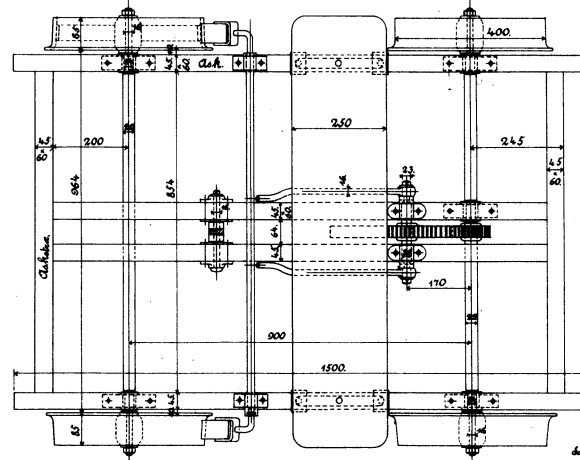
Nr: 4961.

Scandia i Randers.



Draisine til en Mand.  
Metespor.

1/4 sandstrøbet.

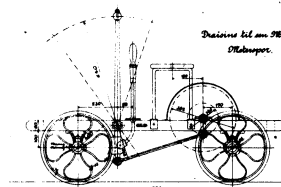


Scandia Tek. 1891.  
Konstruktionen

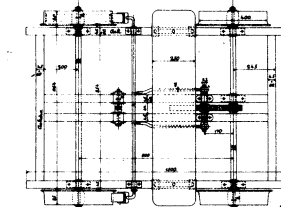
1:20

Nr: 4961.

Scandia i Randers.



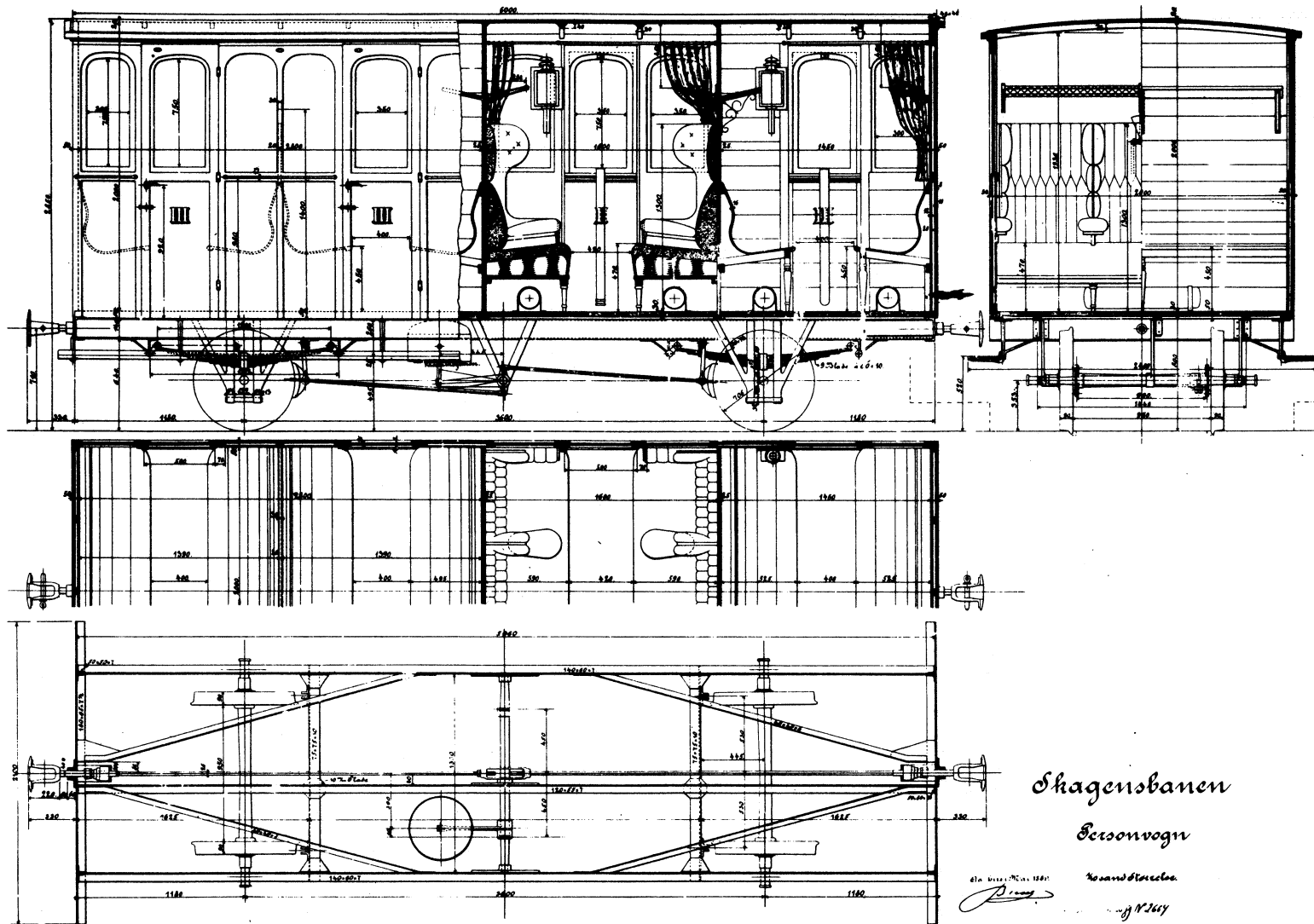
Draisine til en Mand.  
Metespor.

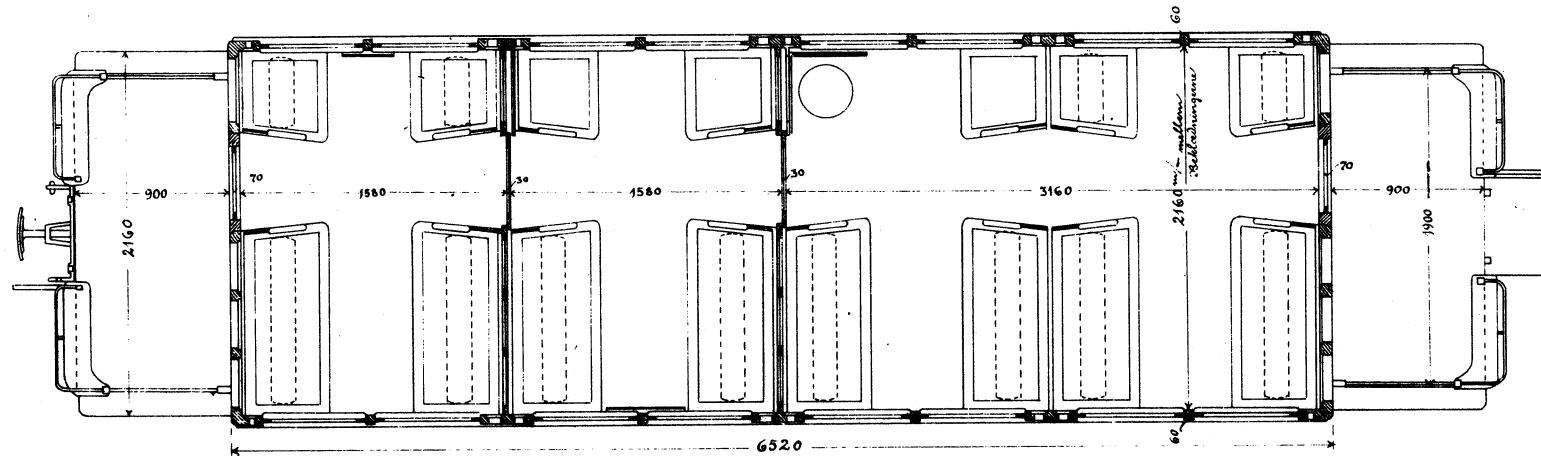
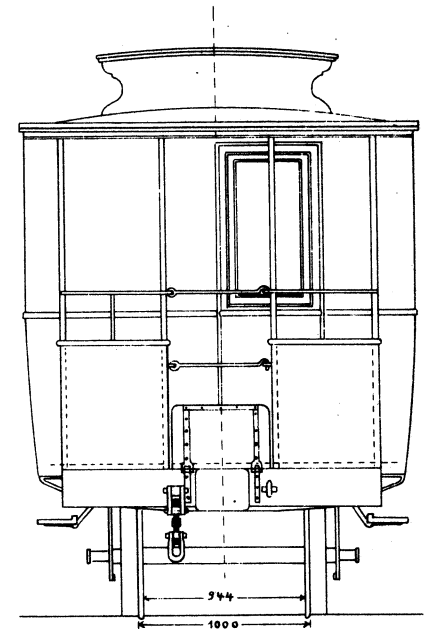
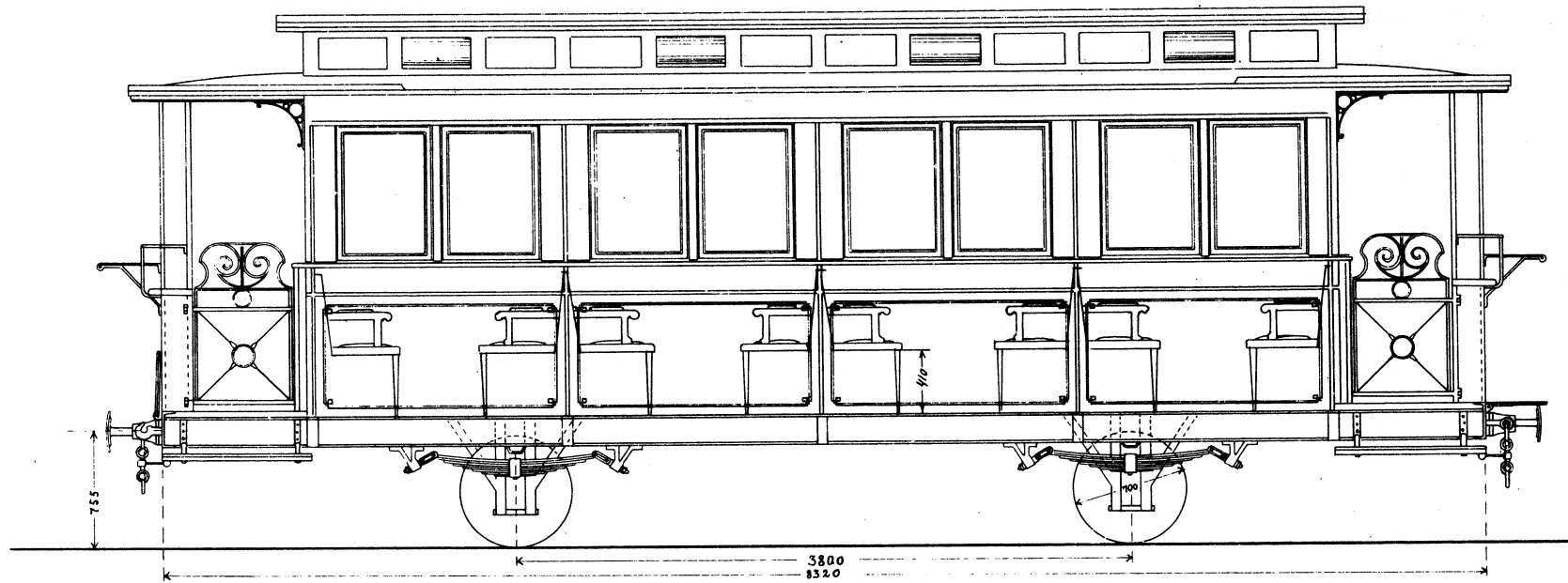


1:45



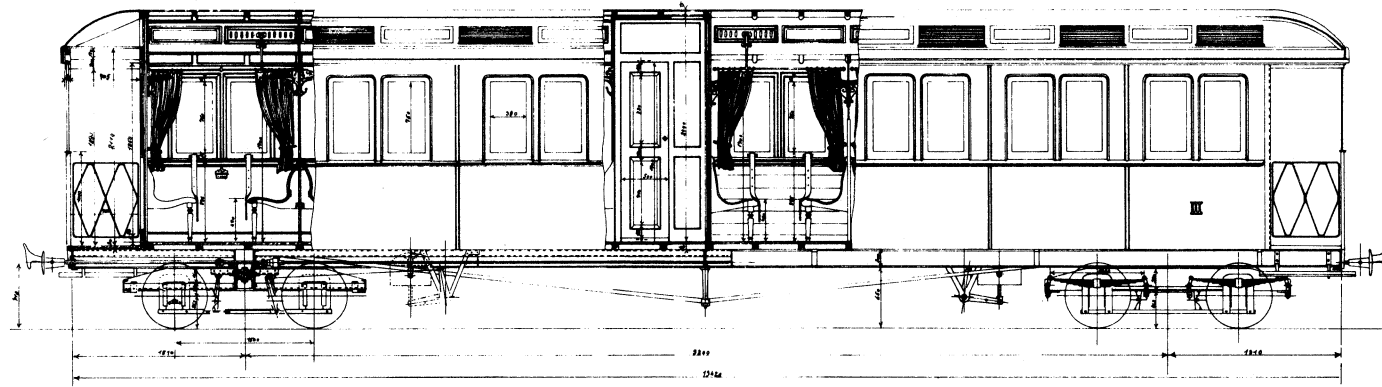




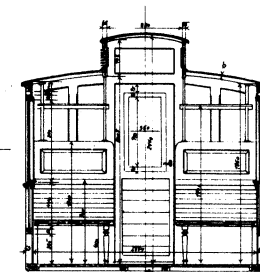
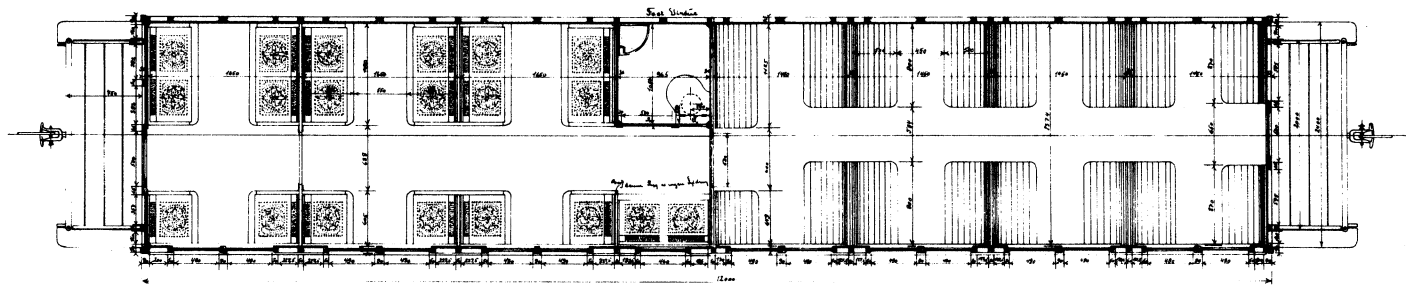
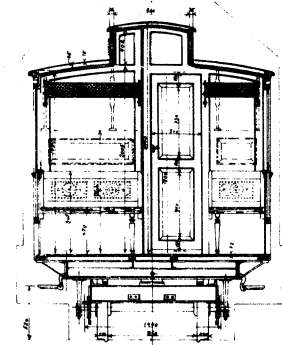




№ 7730.



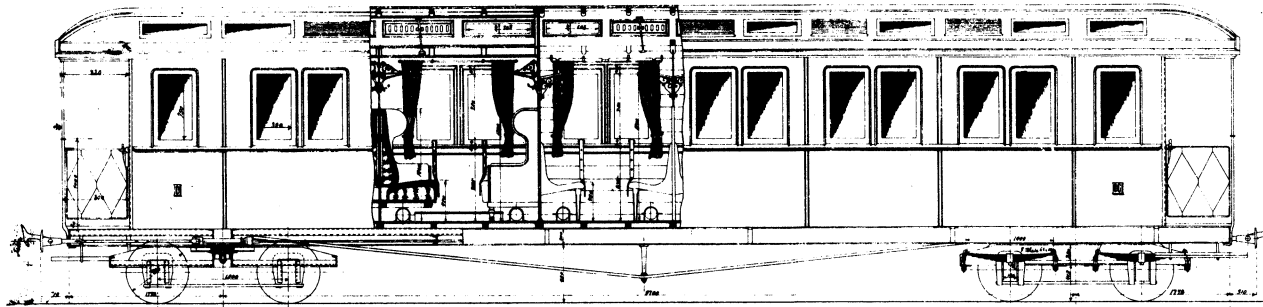
Scandia i Kanton.



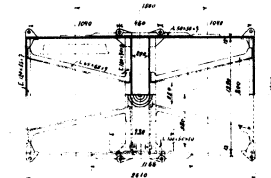
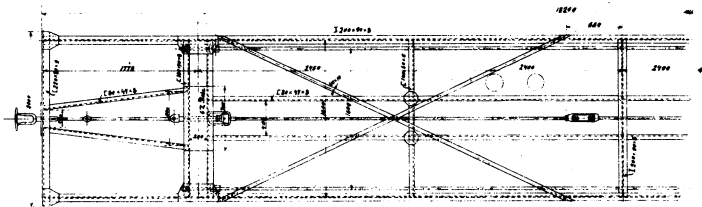
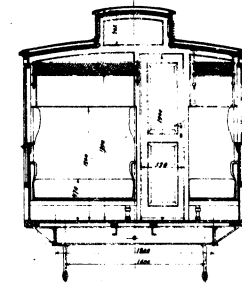
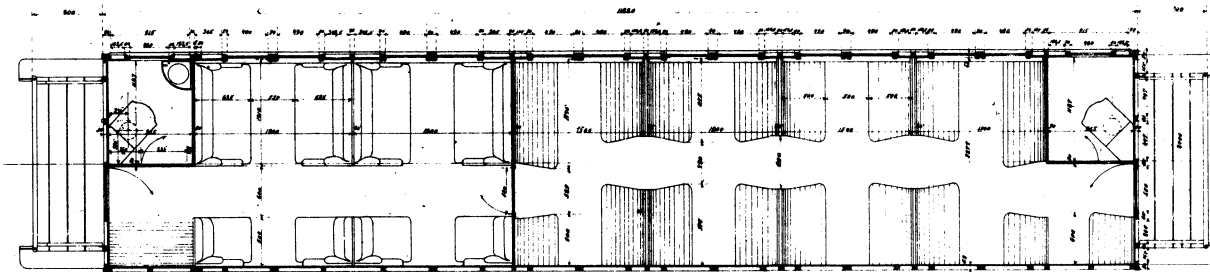
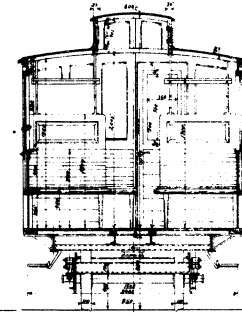
Trickpersonvagn II & III Klasse  
 til  
 Skagenbanen  
 Ordre 569.

FSB E2

*№. 8579.*



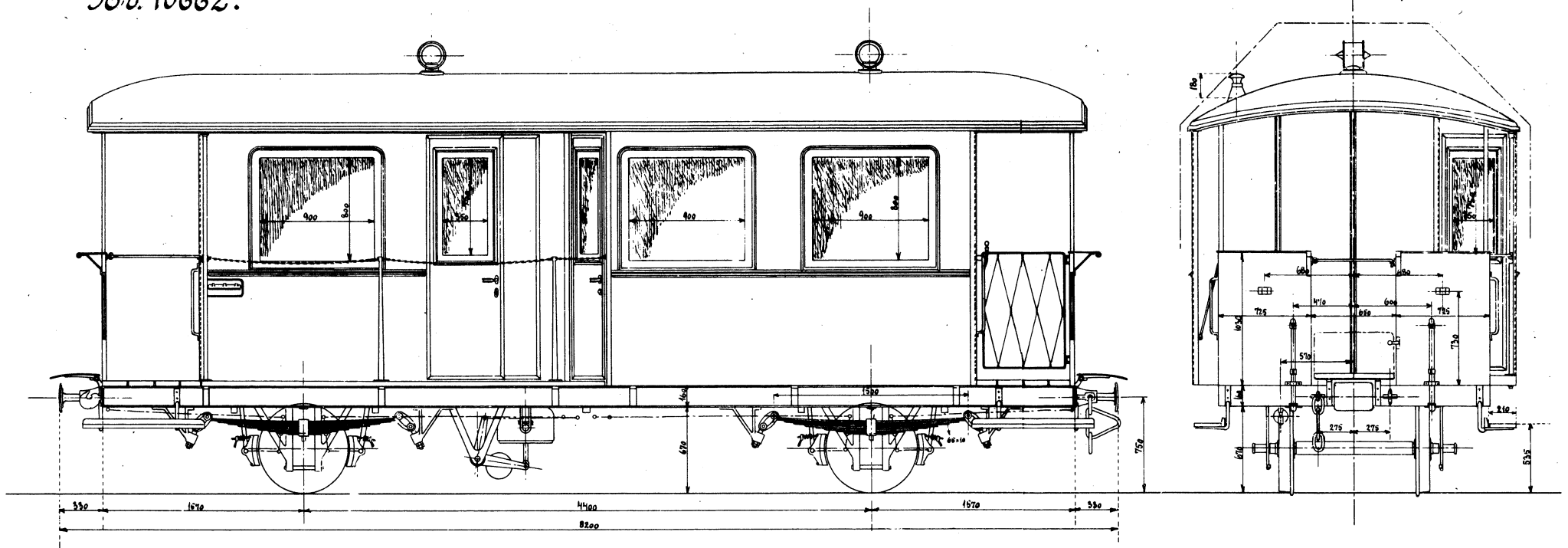
*Scania i Kansen.*



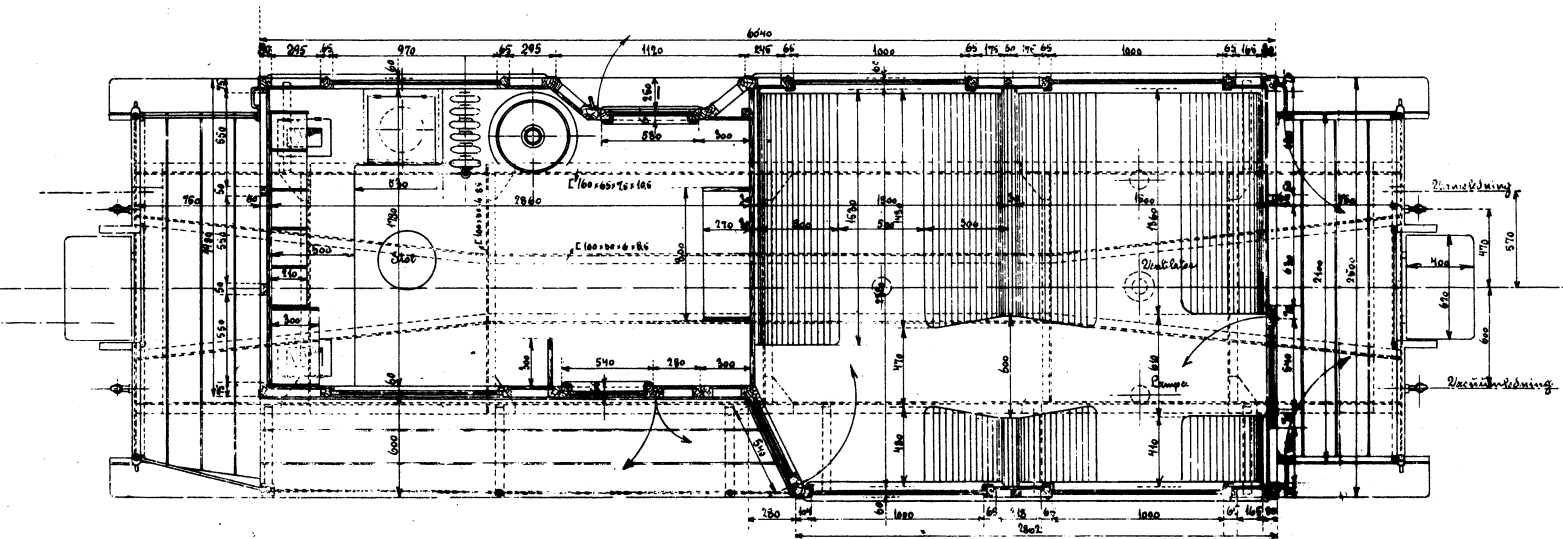
*Scania og i Norge  
til  
Svein Hansen.  
1888.*

Tr. 10662.

Scandia i Randers.



Dagens Dag 650 Kg



Post-Personvogn 3' 3/4".

til

Holding-Egtved-Banen.

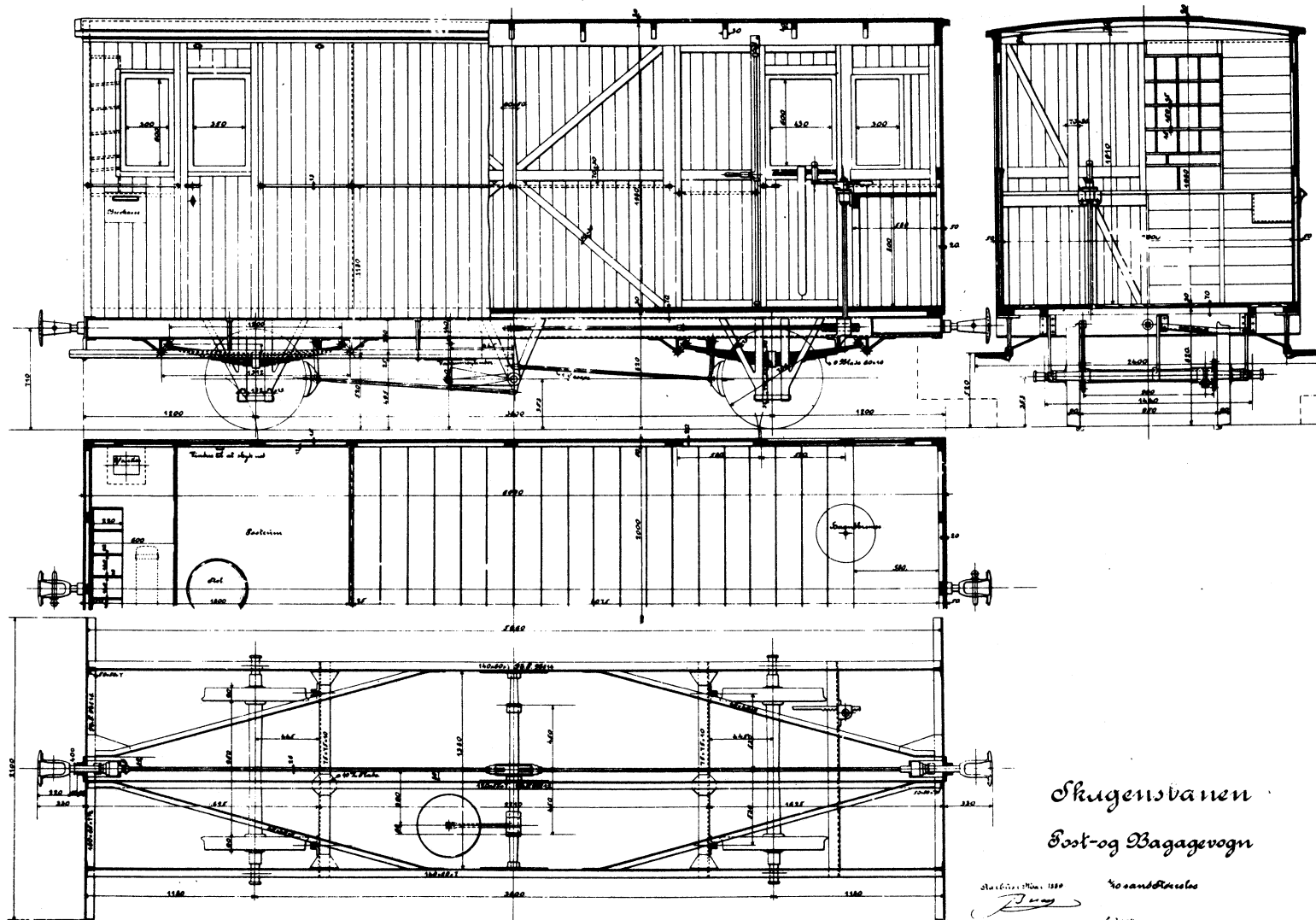
Ordre 1331.

Jan. 12. 4. 15

*[Signature]*

KEJ D 1





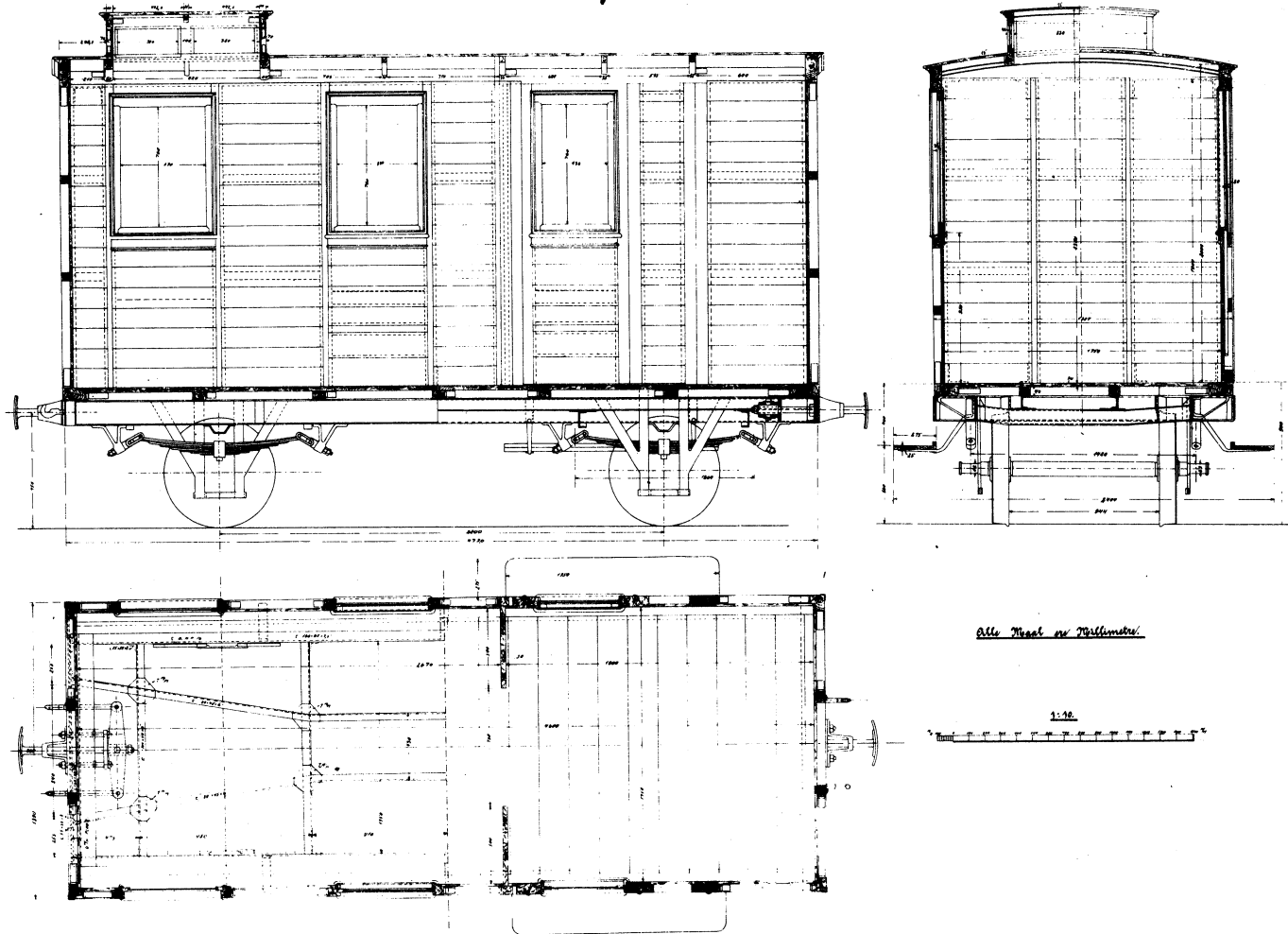
Skagensbanen  
 Post-og Bagagevogn

Skagensbanen 1889  
 Kongsbroskolen  
 1889



Renne-Allinge Jernbane.

Sestvogn. 1:10.



RAJ DA 326

*Hörs-Allings järnvägs*

# Sukket Godsvagn

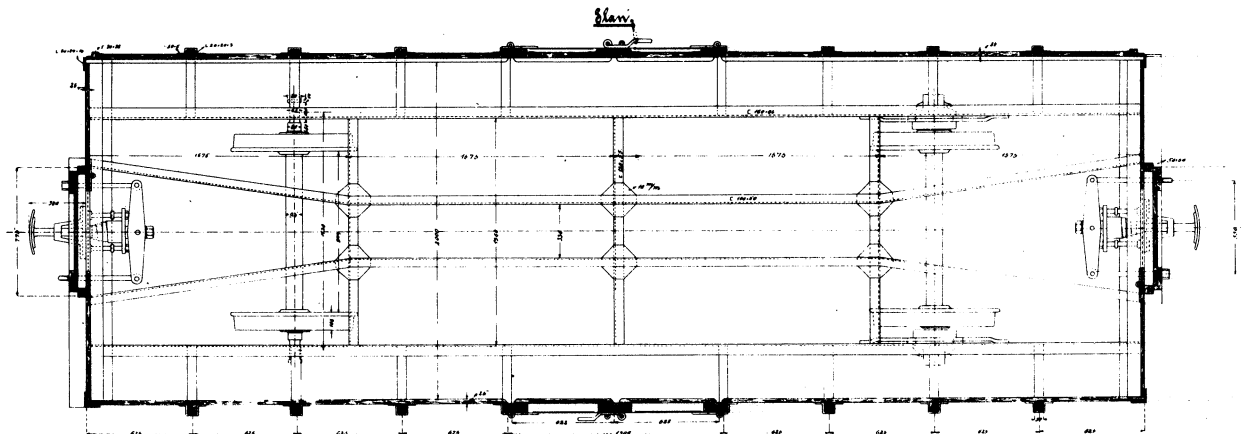
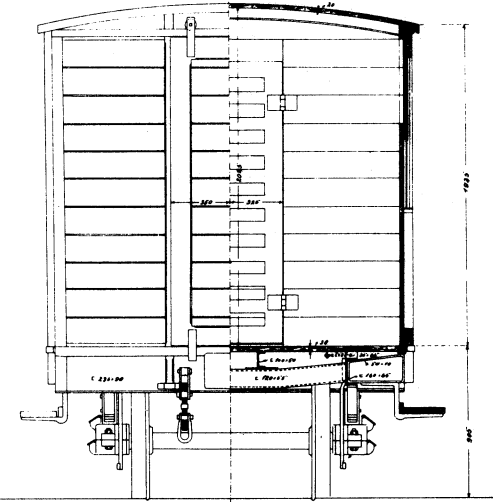
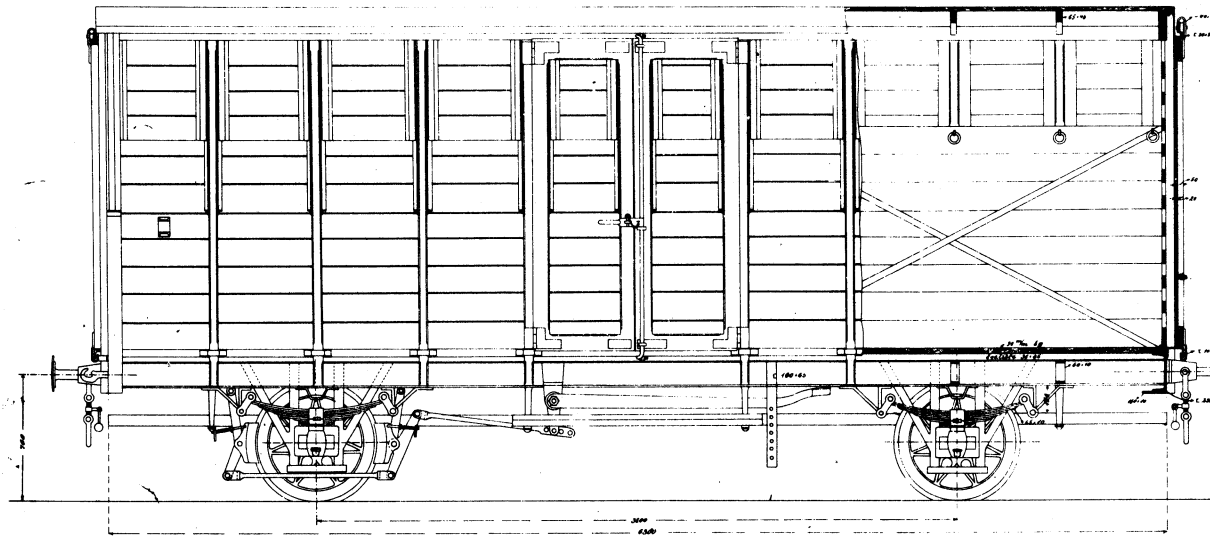
til Arstaten og Svinestransport. Bæreevne 3500 kg. 1:12.

Opsett.

Sandemil.

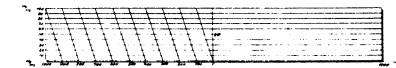
Gaet.

Evansnit.

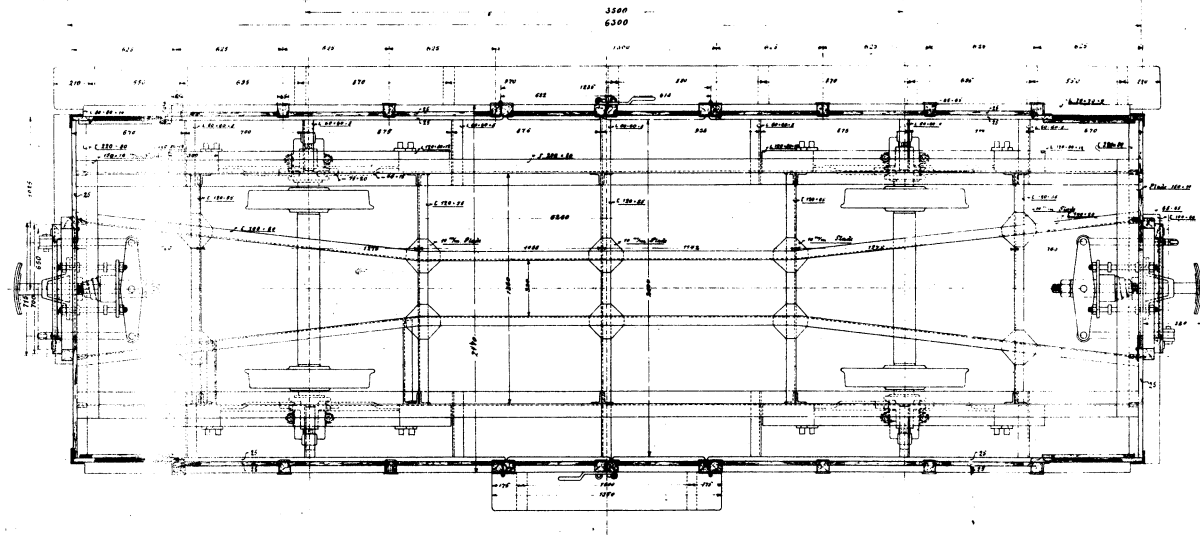
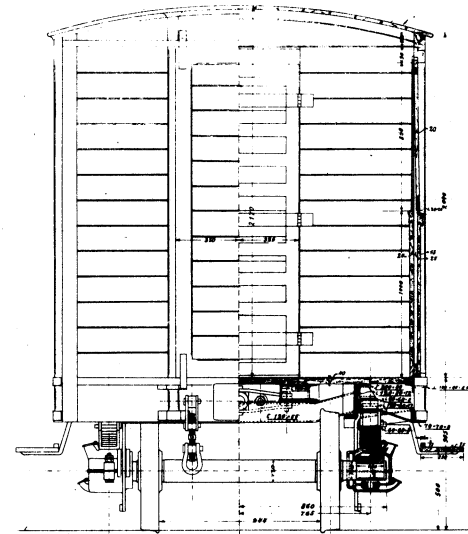
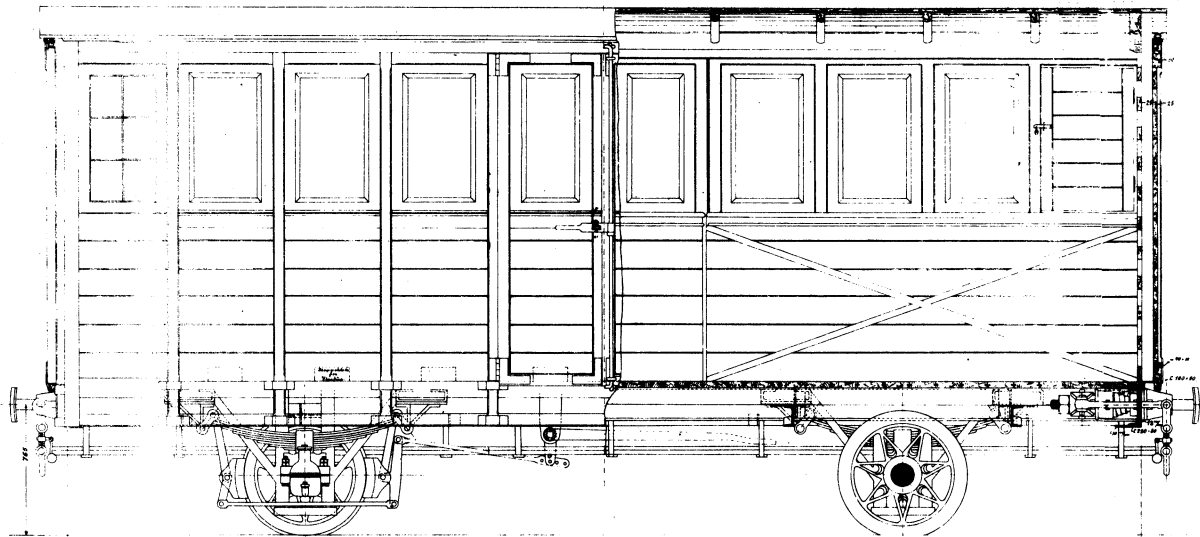


Alle Maal i Millimetre.

1:12



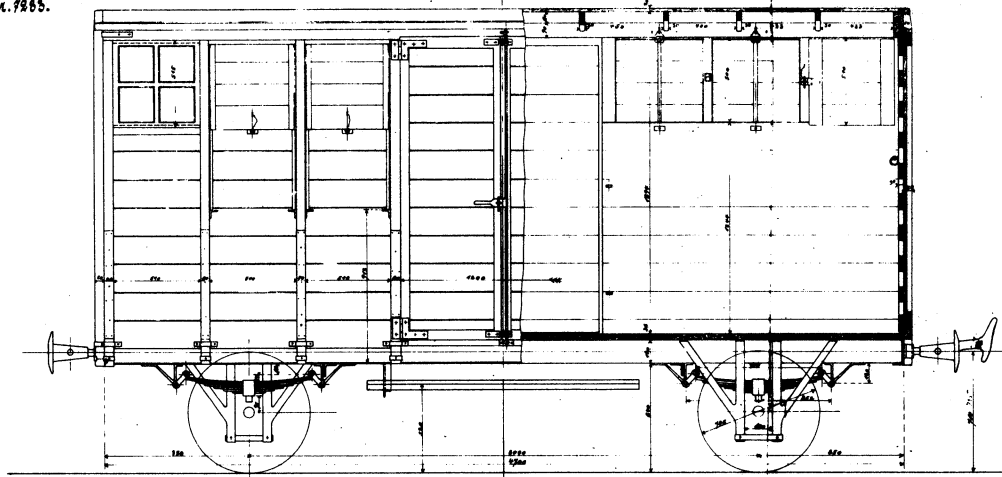
Lukket Godsvagn. 1:10.



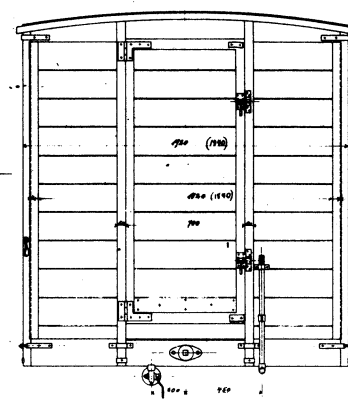
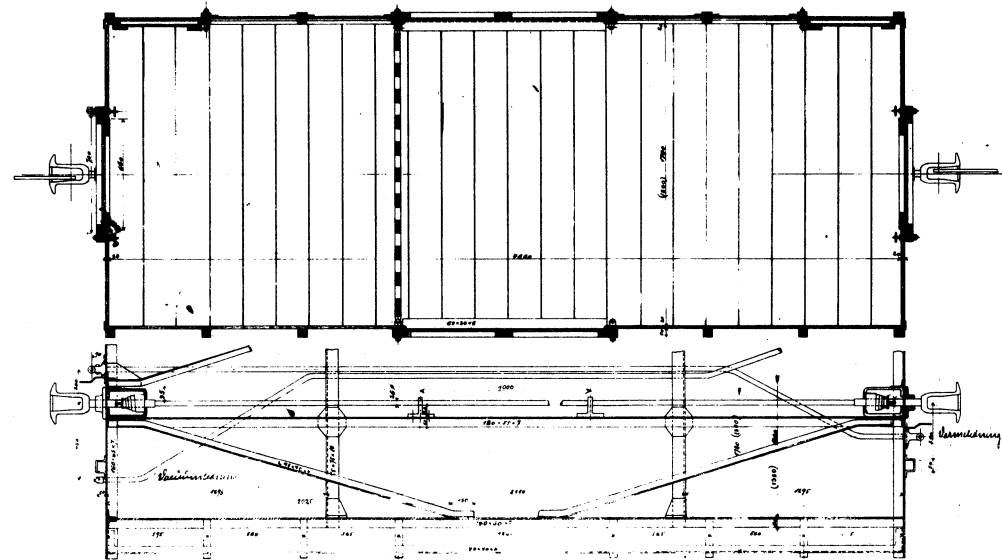
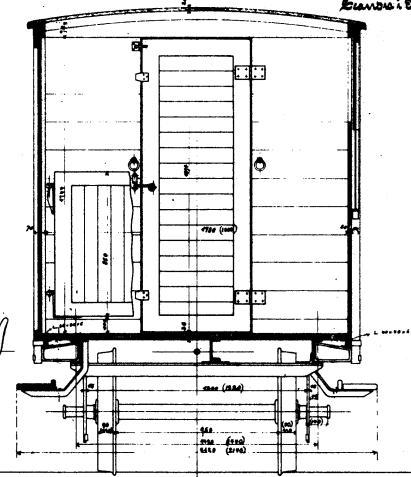
Alle Måler i Millimeter



331. 7885.



Standard 1. Standard.

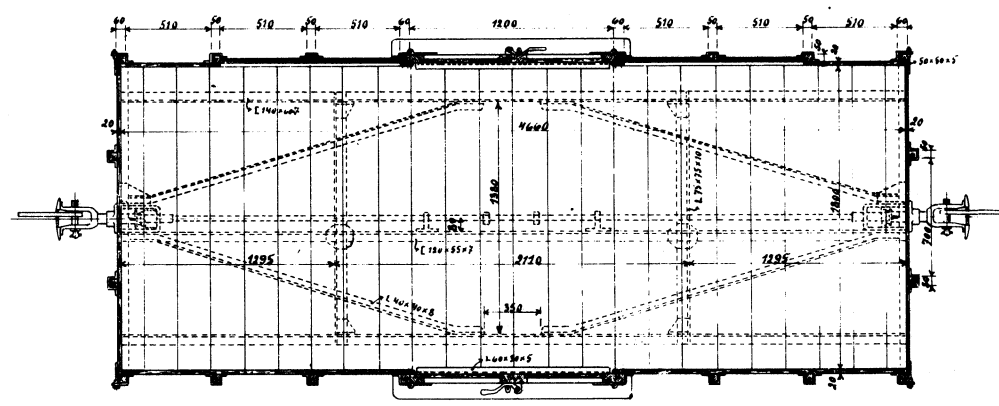
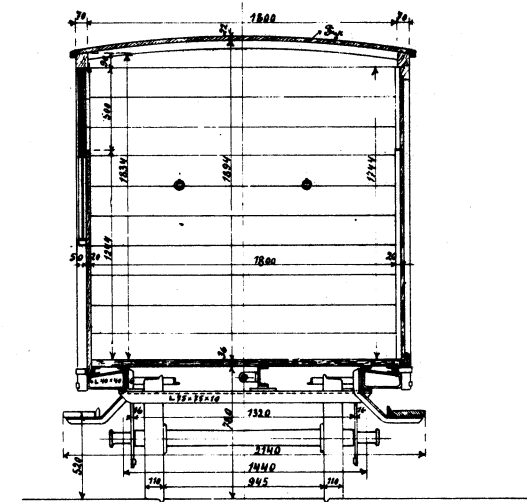
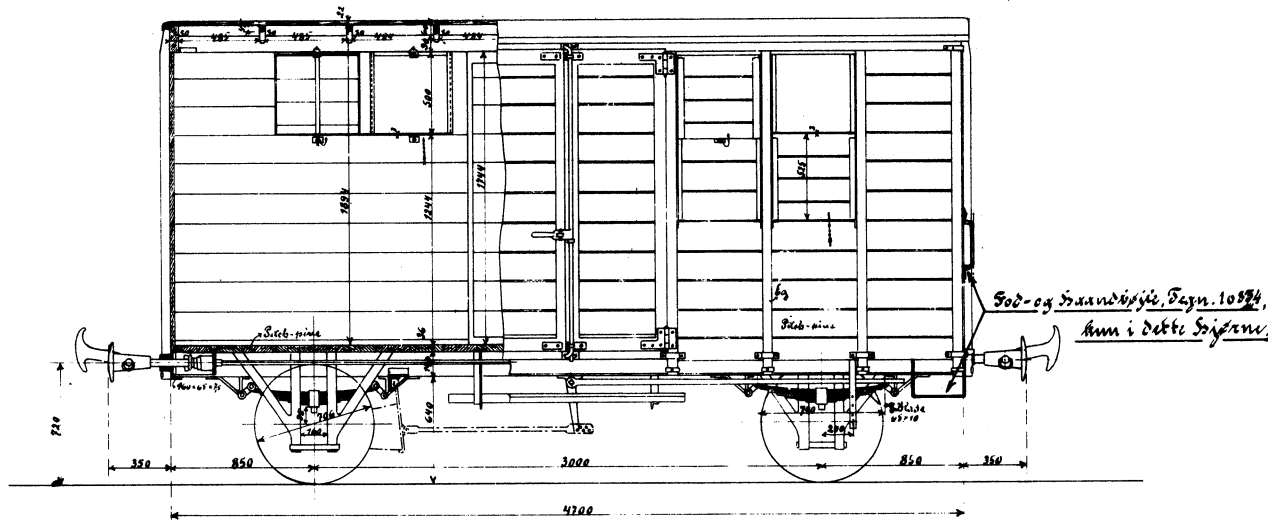


Leichter Lastwagen mit Eisenbahn-Verbindung.

Leicht u. Kleinwagen Oden 1913 mit...  
Handl. 1913.  
Böhmen

Nr. 10219.

Scandia i Randers.

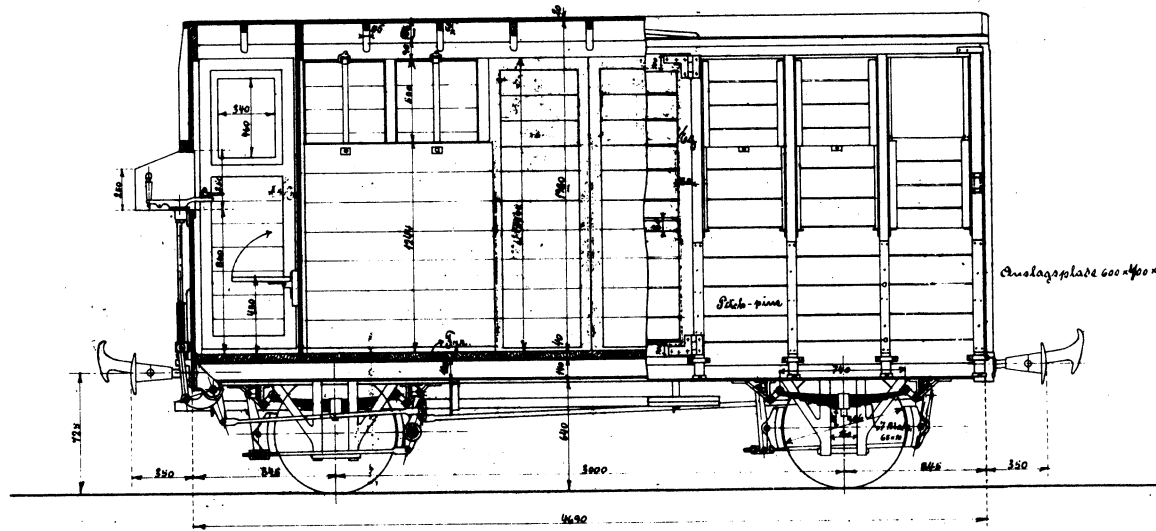


Lirket Godsvoan med Saandbremse  
til  
Skagensbanen.  
Ordre 1231.

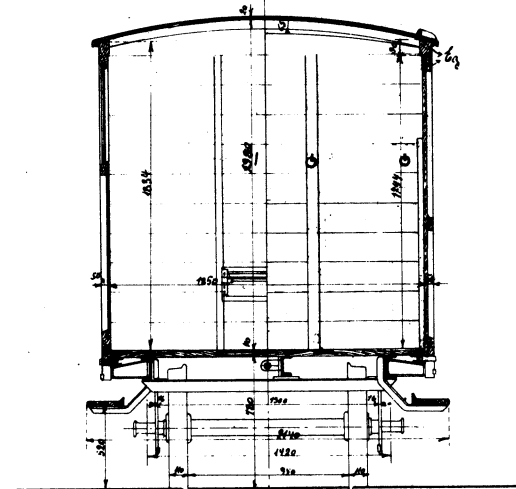
Scandia, d. 24. 14  
K. W. Jensen.



Nr 9136



Scandia & Randers.



Lukket Godsvogn med Skrivebremse.

til

Norsens Brynæs Jernbane.

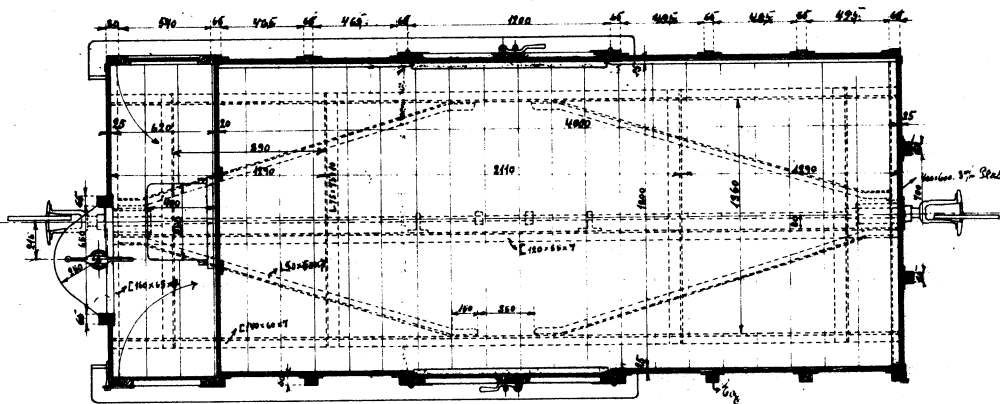
Ordre ~~877~~ 1188.

Scandia, d. 26/10

W. Westinghouse.

new for Ordre 1188 = 9/12.

W. Westinghouse.



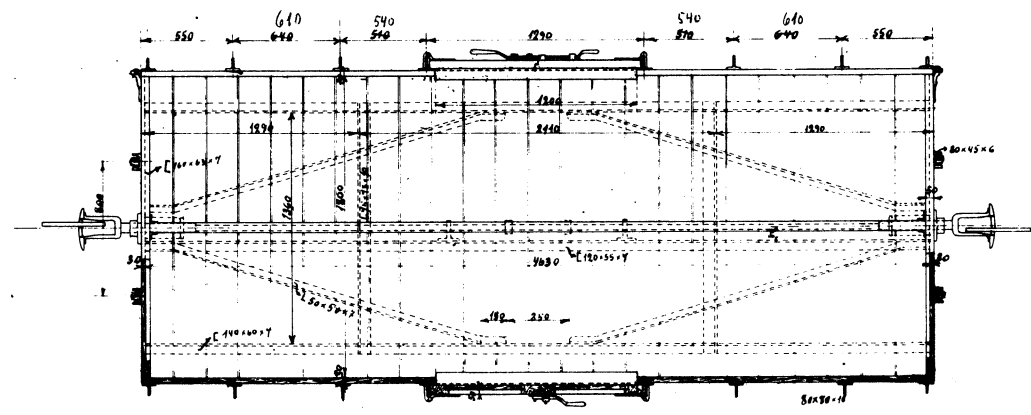
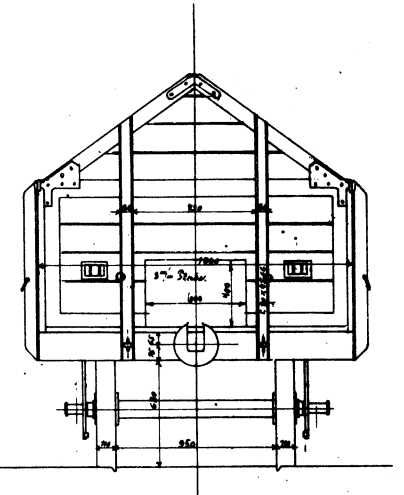
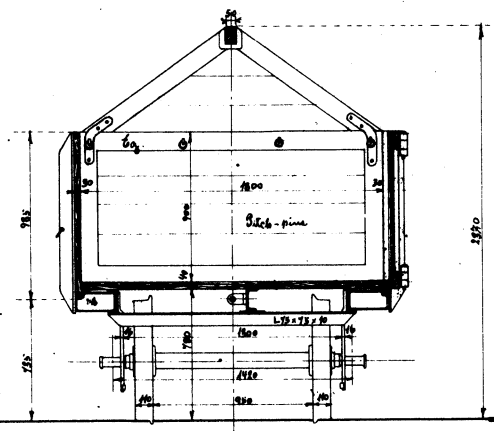
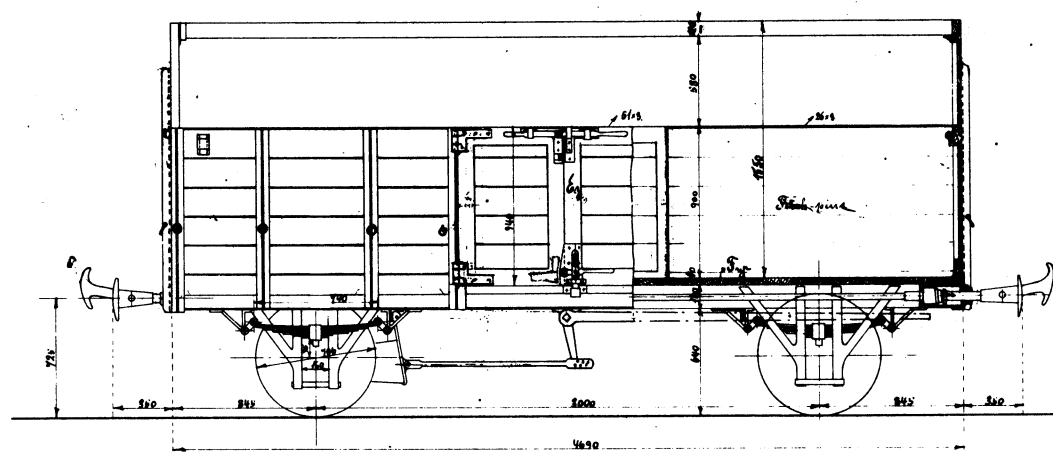
HBJ H 95-96





No: 9137.

Scandia i Brandus.



Aaben højrsidet Godsvogn.  
 til  
 Nordsens-Bayriske Jernbane.

Ordre 898.

Ordre 1190.

Scandia, 2/10-10  
 Kloustrup.

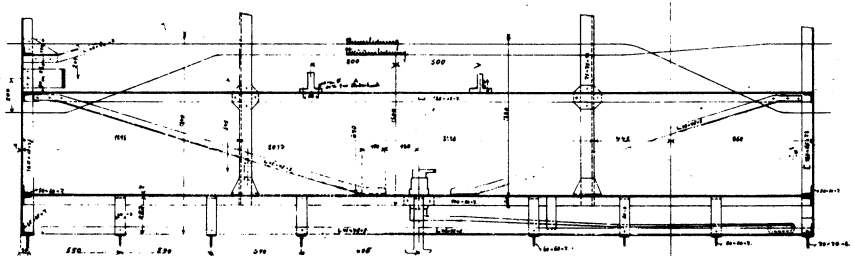
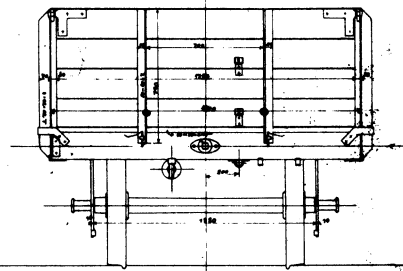
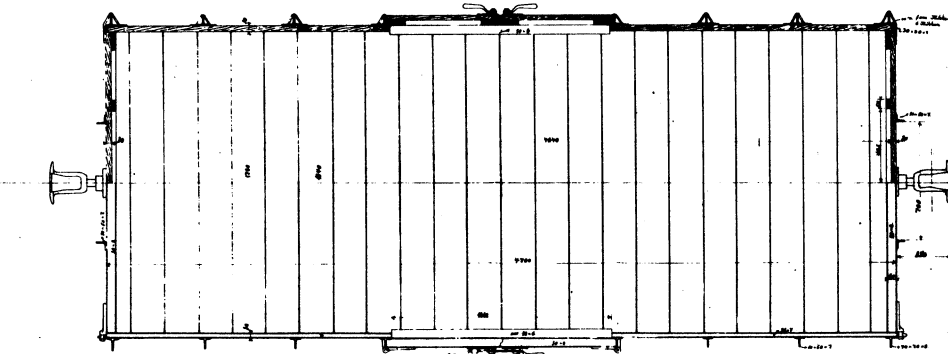
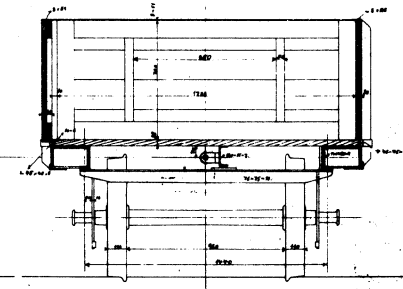
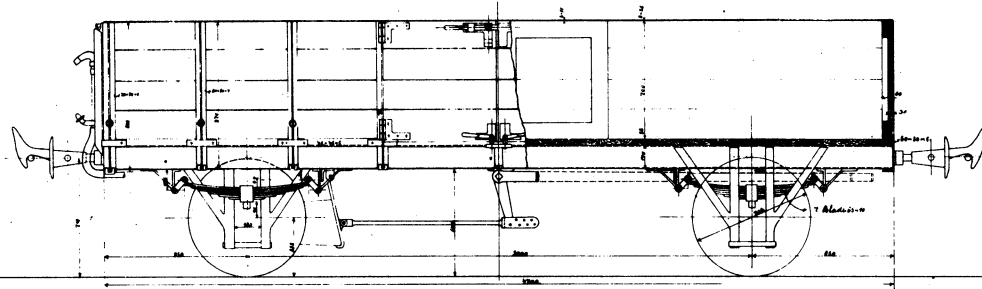
Skizset af 9/15 for Ordre 119.

HBJ G160-62



No. 6992.

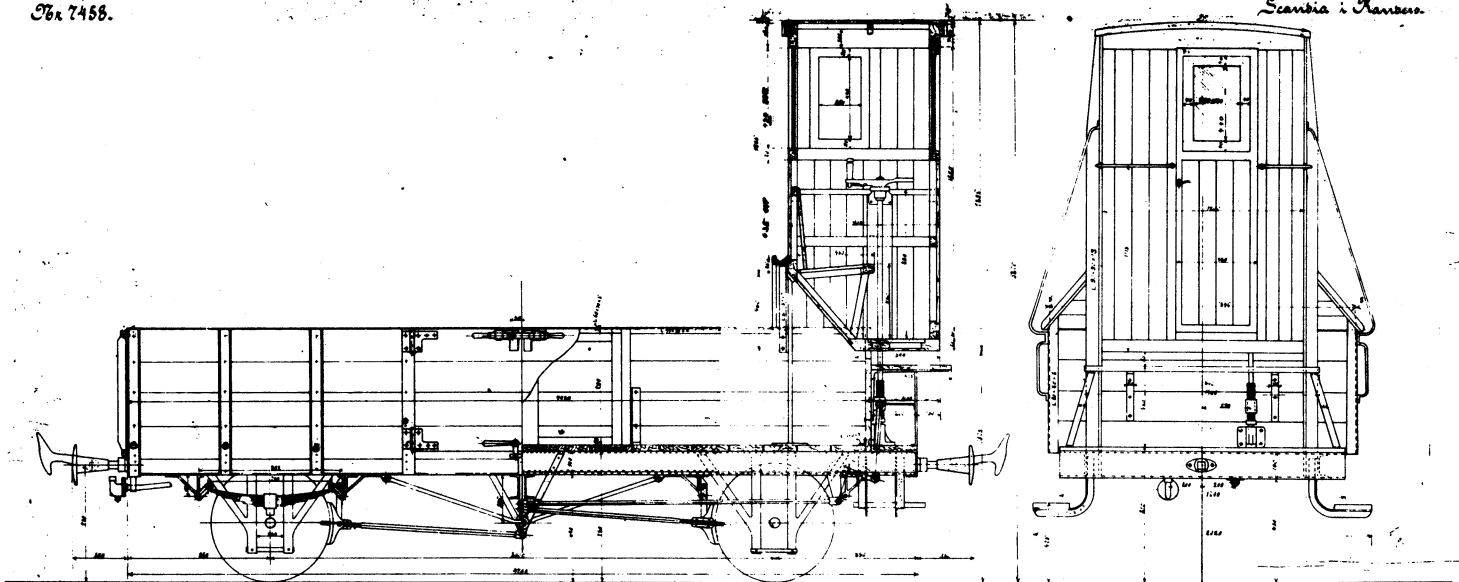
Scania i Rindon.



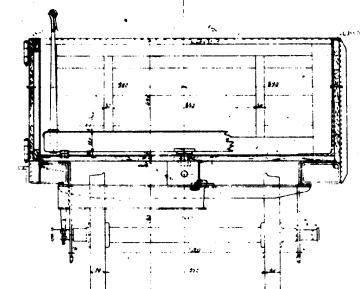
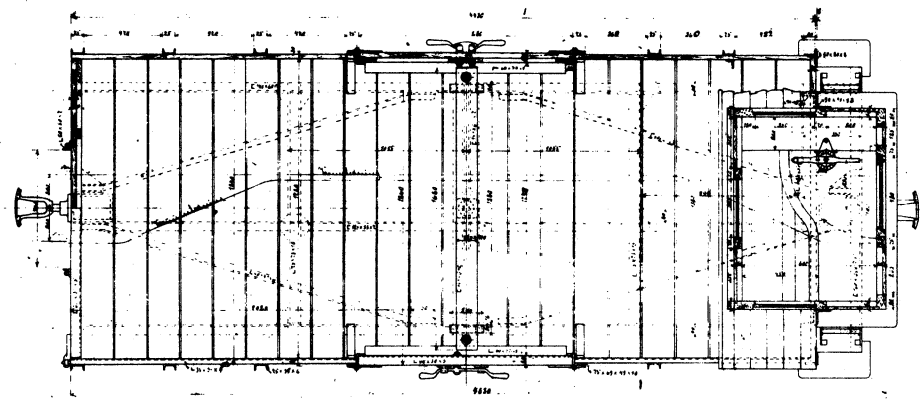
Laben komet Cyrooga  
 til  
 Sorrens = Fering = Bansen. Oren. 204

Scania 1908  
 Kambukhonen  
 1/10/08  
 A.B.

№ 7456.



Scandia i Randen.



Ordnre 444.  
 Orden lavret til Lodsvejen med Sprækkese  
 til  
 Skagenbanen

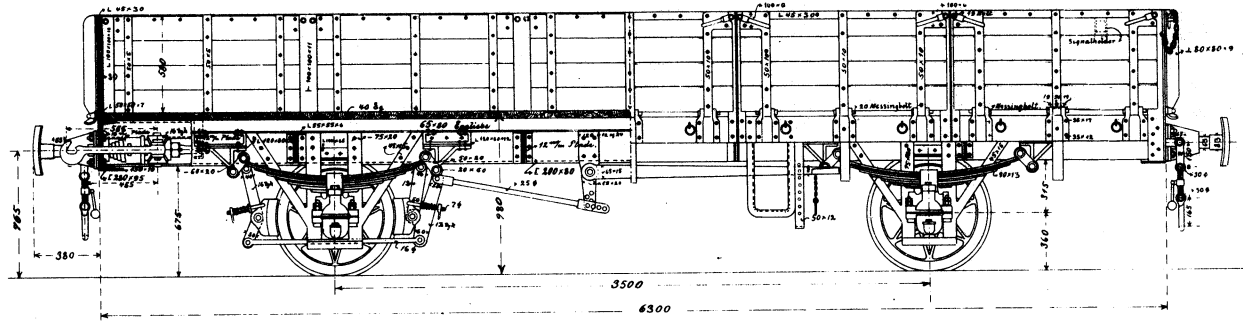
De borsholmske Jernbaner  
Købe-Ållingsbanen

# Raben Godsvogn med Haandbremse. 1:15.

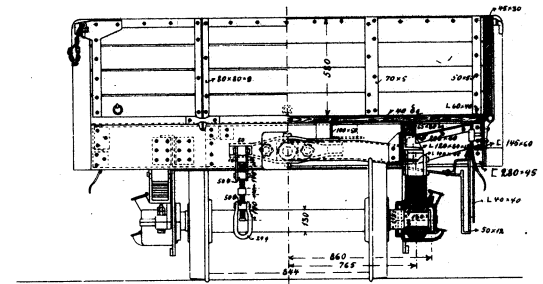
Barsevne 10000 kg.

Snit a-a.

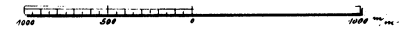
Opstalt.



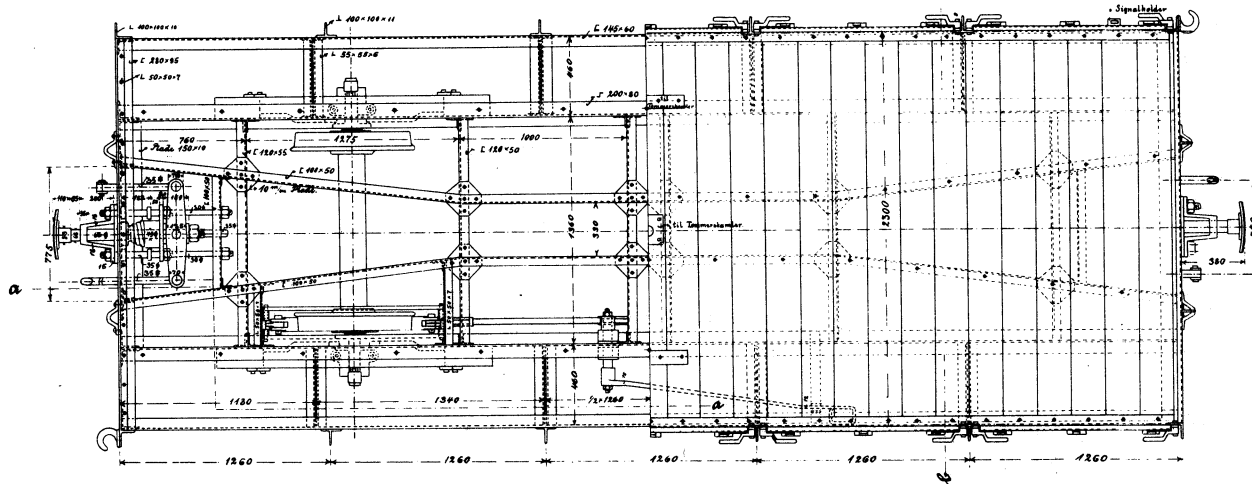
Snit b.b.



1:15.



Plan.



Målestene ere Millimeter.

L. Fagerlin.

# Køben Godsvogn med Skruvremse. 1:15.

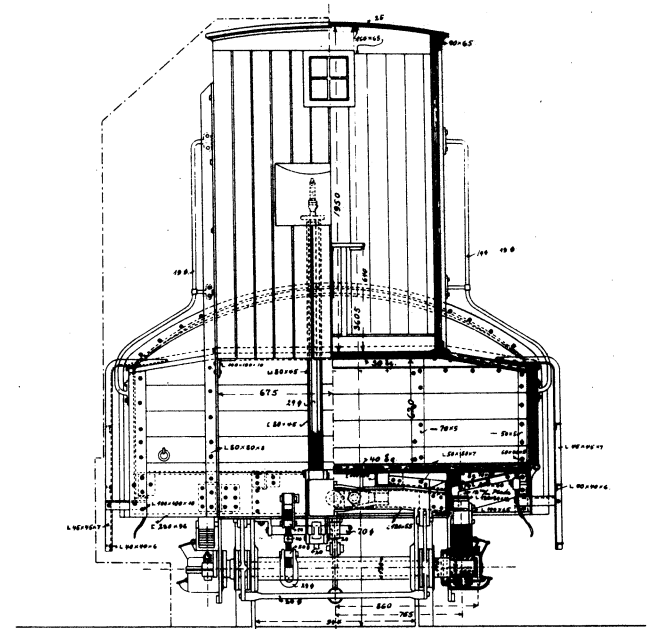
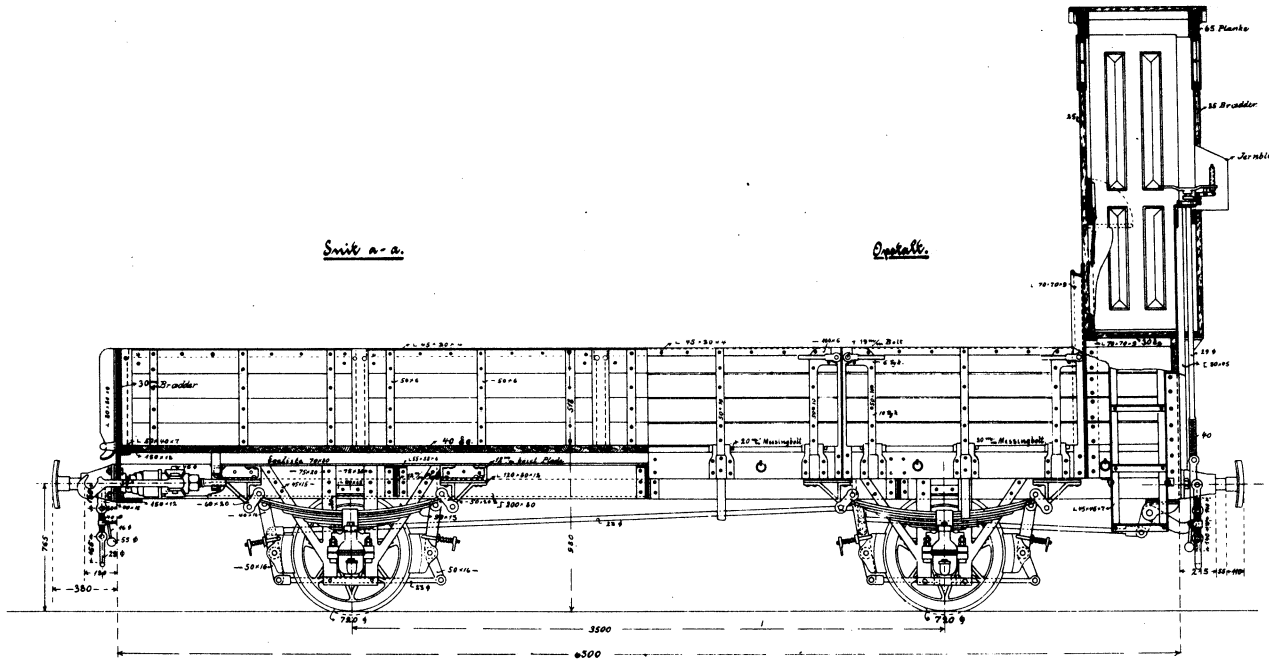
Bærelse 10000 kg.

Fig. 1.

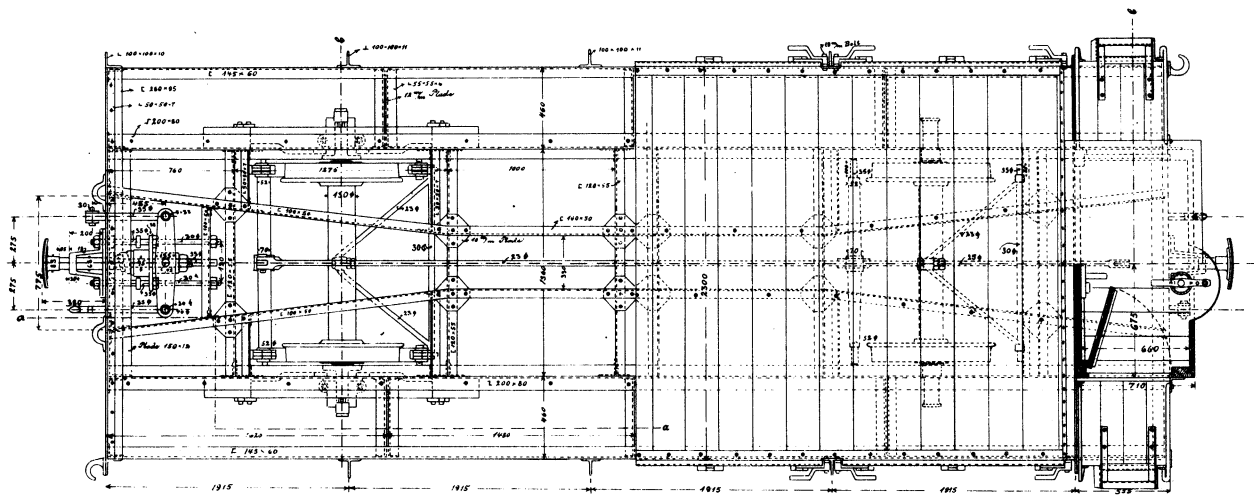
Snit 1-1.

Snit a-a.

Opstalt.



Plan.



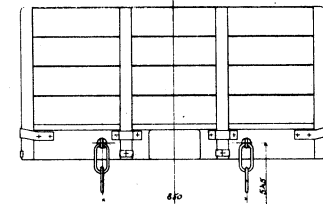
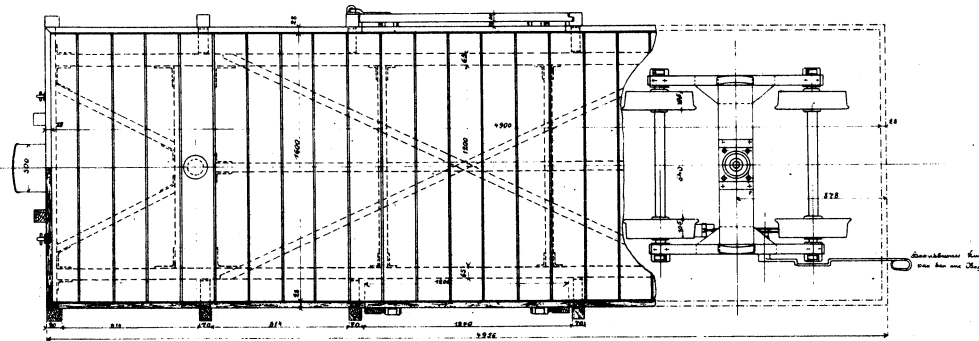
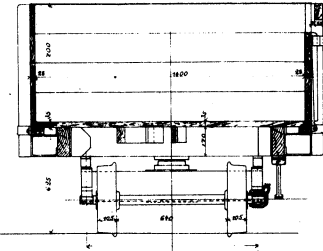
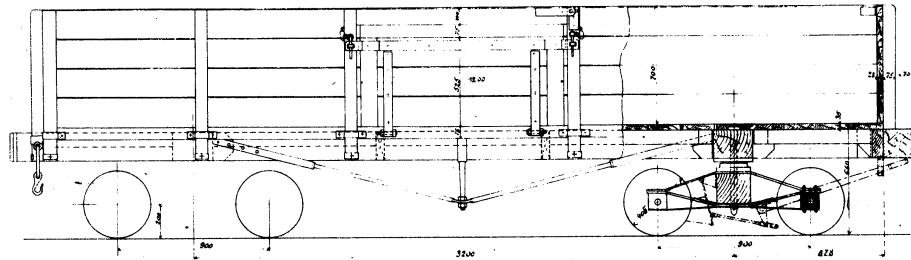
Alle Mål i Millimeter.



J. Fogelind.

No. 5486.

Scania i Lands

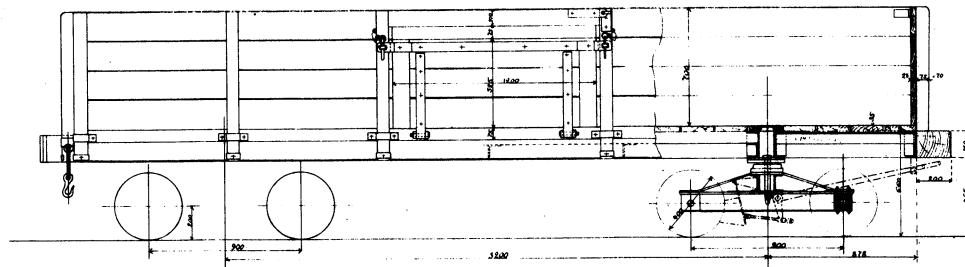


Orton Jernvagn till Sukkeret. Transport.  
Kapacitet 6000 St.

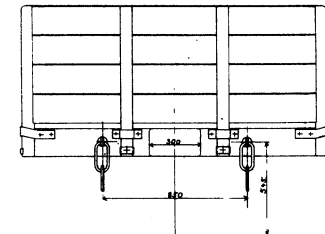
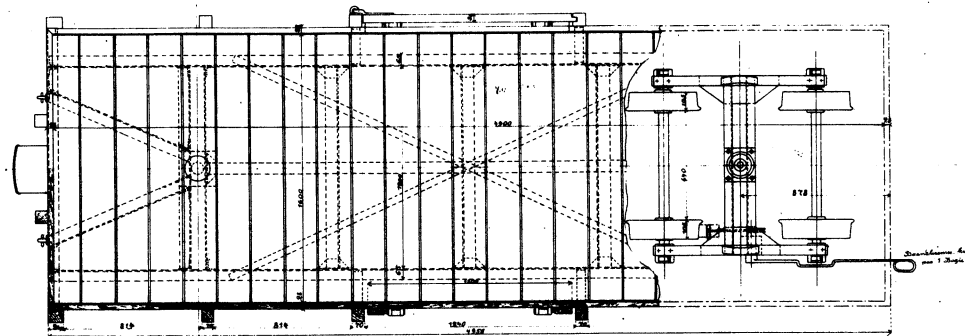
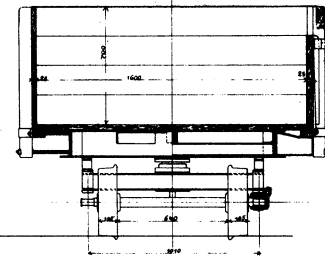
Skalslängd 11,10.

Scania 1888.  
Jernvagnen 5486.

№ 5485.



Scania Tranbuss.



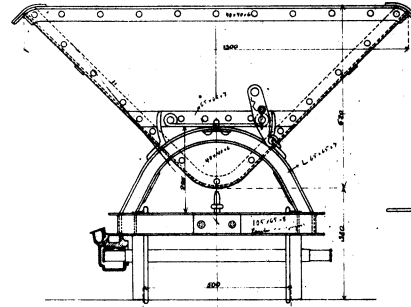
Arben Godovagn til  
Sikkerhed - Transport.  
Banevne 6000 Gb

Scania 1885.  
Konstruktøren.

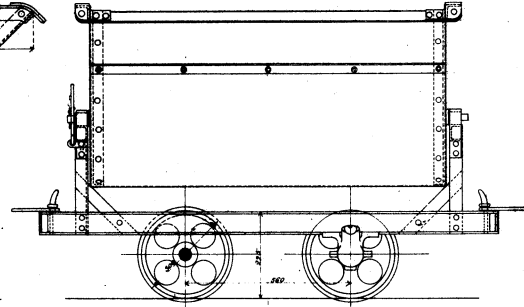
1:10



№. 3336.

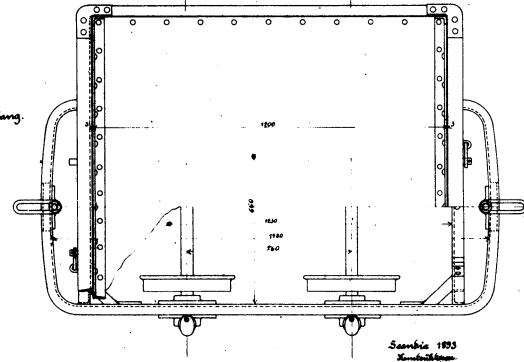


Scania i Helsing.



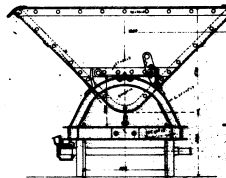
Tipsvagn med 4 hjul. Helsing.

Vagnen till Kollstaden  
11. Ejning 5645

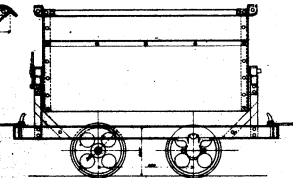


Scania 1823  
Kollstaden

№. 222.

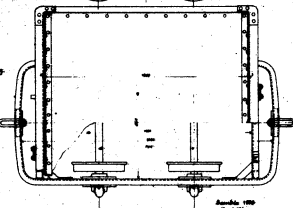


Scania i Helsing.



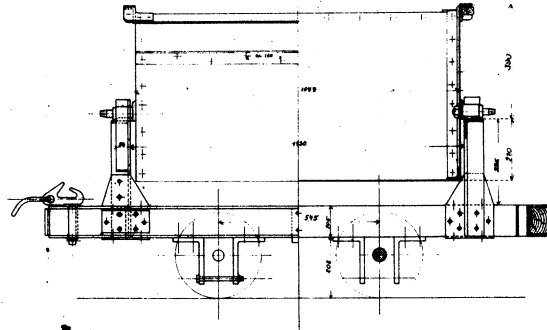
Tipsvagn med 4 hjul. Helsing.

Vagnen till Kollstaden  
11. Ejning 5645

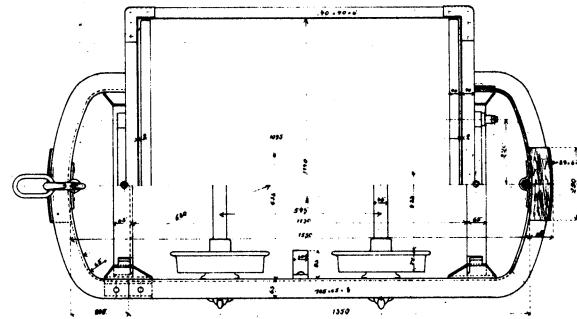
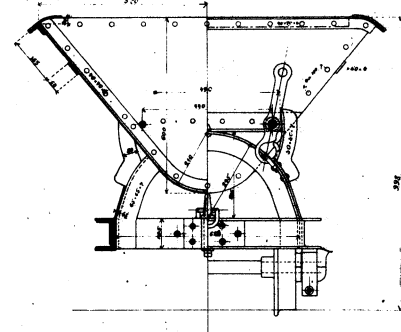


Scania 1823  
Kollstaden

Ob. 5646.



Scandia i Norden.



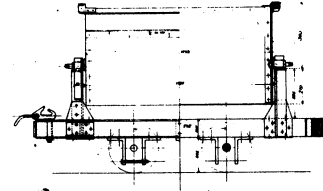
~|:|

Eipravn.  
Lagget til Sr. Holsten 1894.

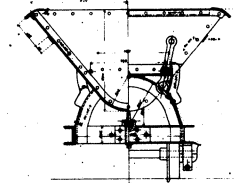
Scandia 1894.

2640

Ob. 5647.



Scandia i Norden.

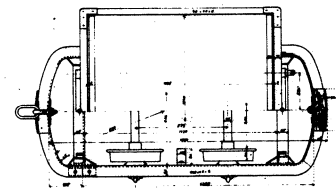


~|:|

Eipravn.  
Lagget til Sr. Holsten 1894.

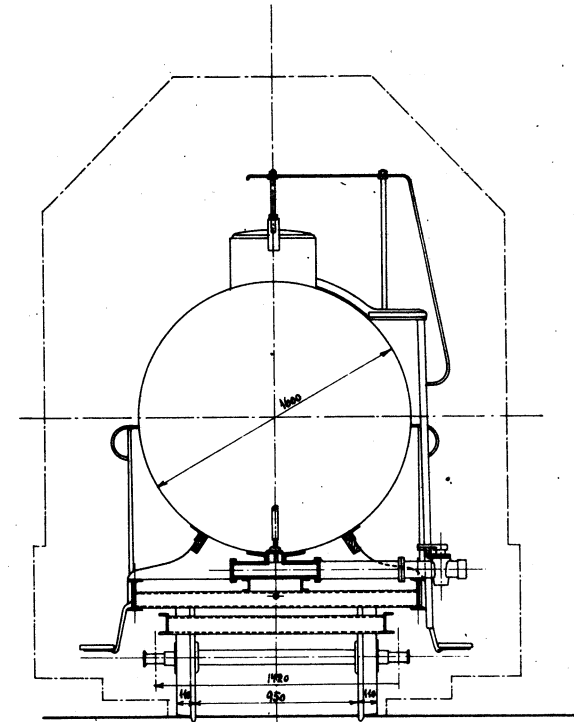
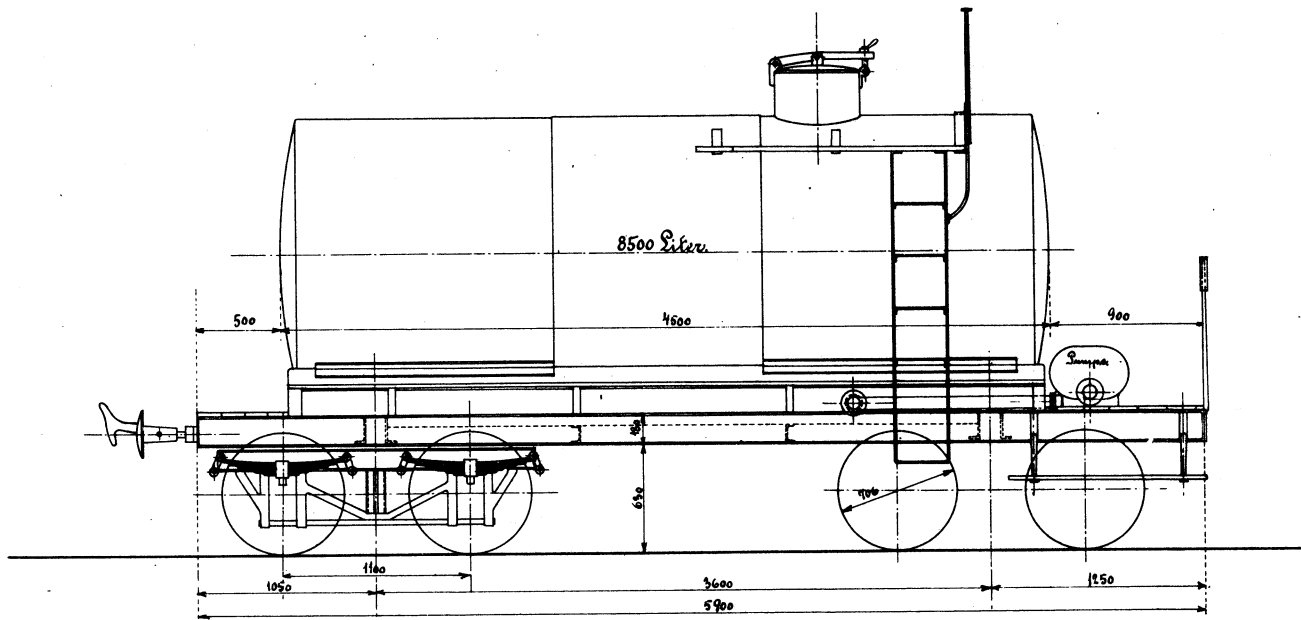
Scandia 1894.

2640



Scandia i Randers

Nr 9577.

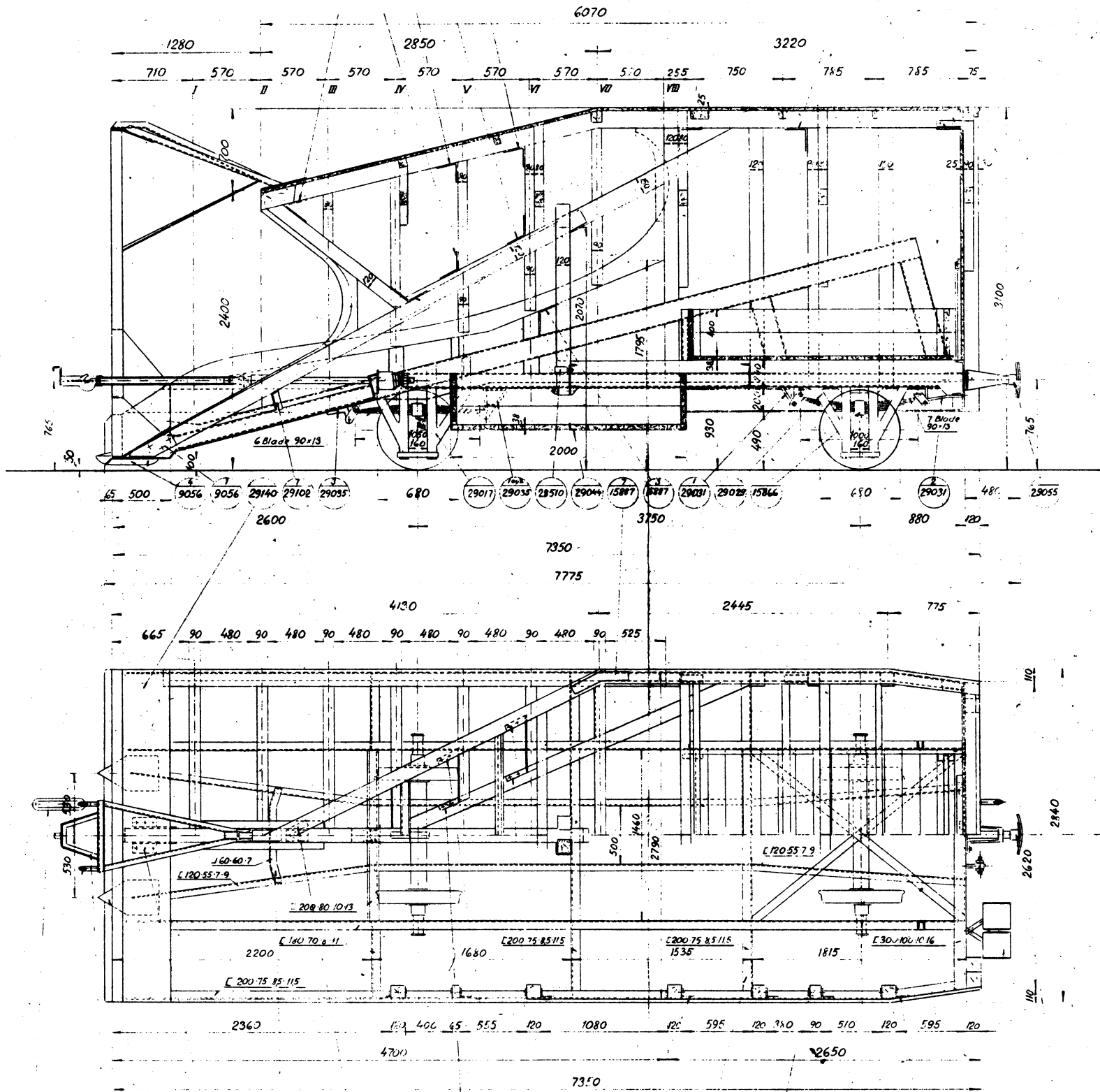


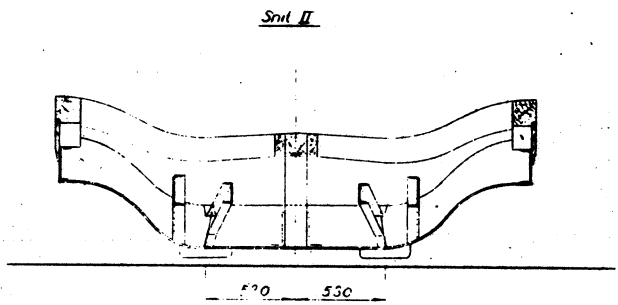
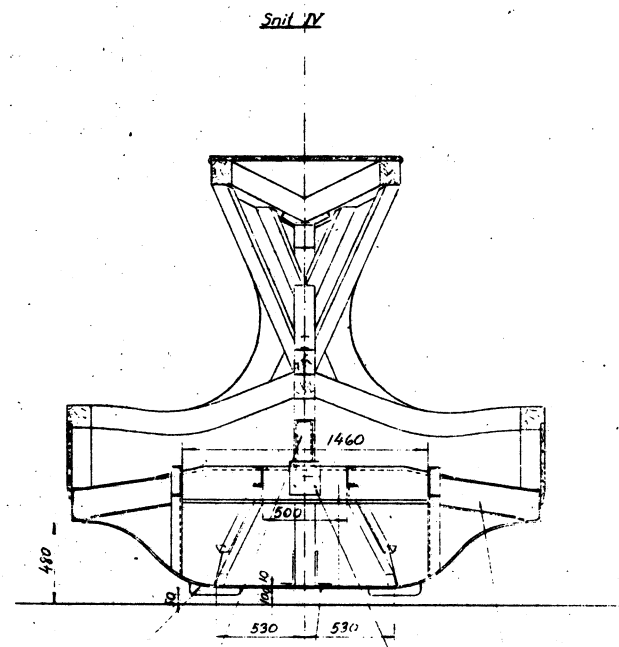
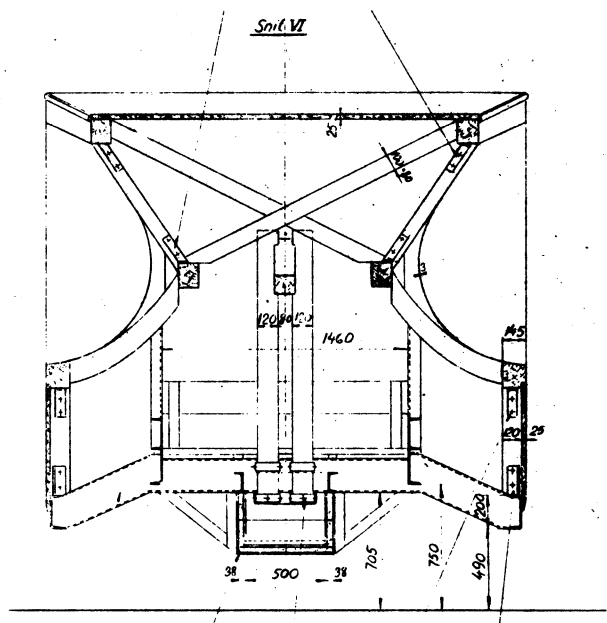
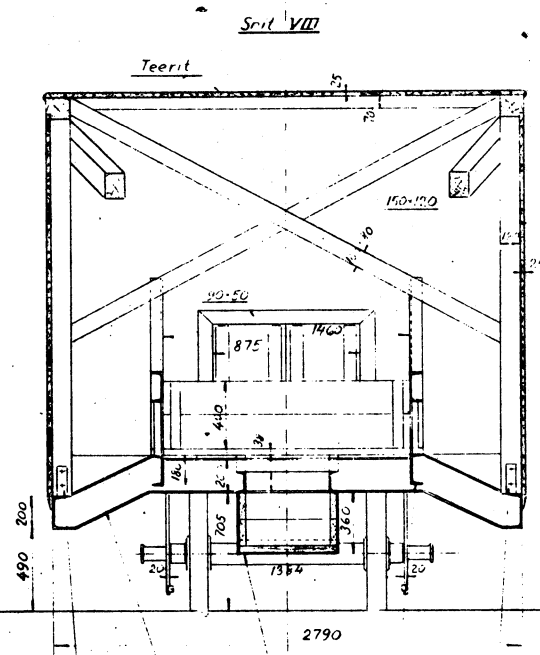
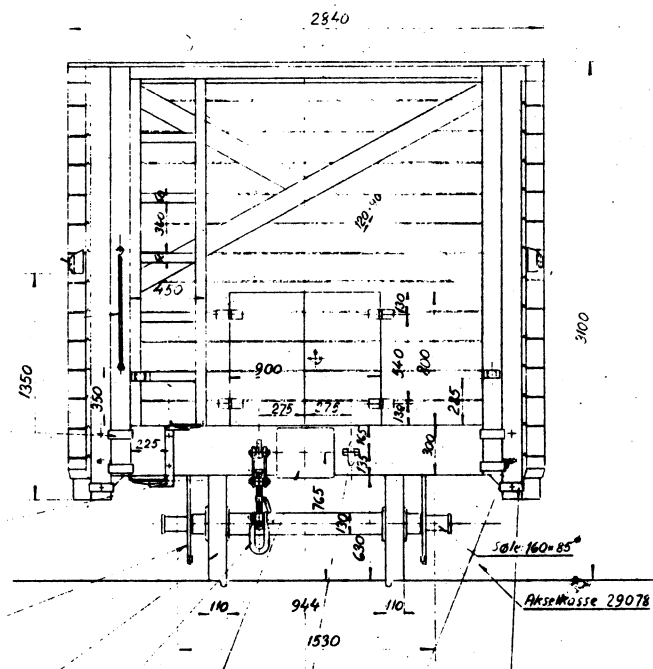
SKUFFE 490

Sjære-Tankvogn til  
Sagpapfabrikken Dorteasminde

Lands 21-8-11

HTB

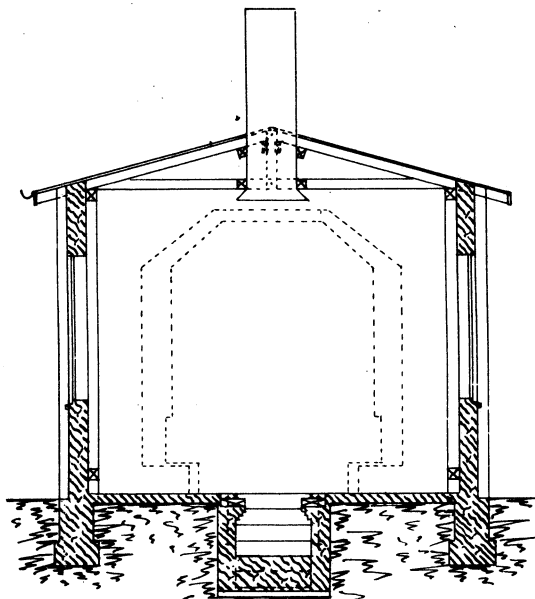




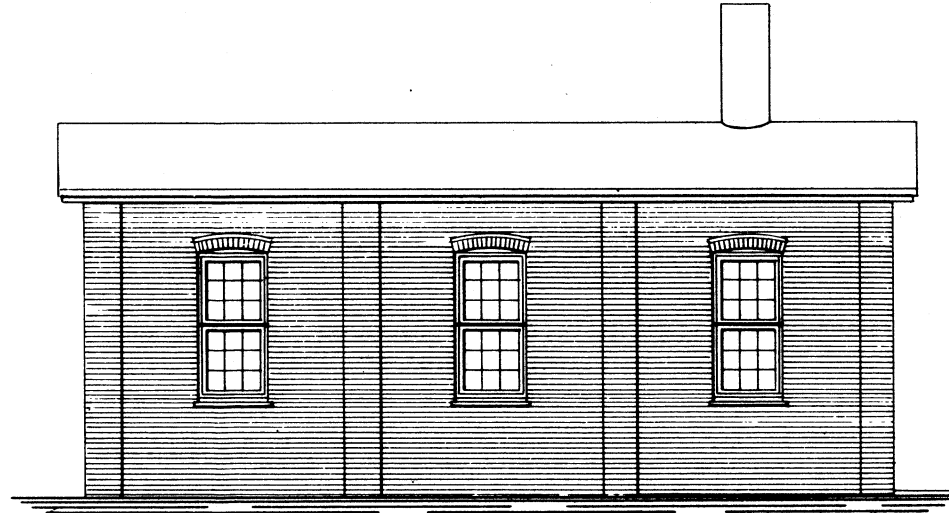
Skt.	Genstand	Nr.	Maal	Materiale	Model	lg/Skt.
Forsamlinger						
<b>VOGNFABRIKKEN SCANDIA A/s RANDERS</b>				Maalstok 1:20	Tegn. Kalk. Rev.	4-10-22 -11-7 -5 SH. 11 4-24
<i>Sneplov</i> De bornholmske Jernbaner Nr 1				Ord 590		<b>29174</b>

# Den bornholmske Jernbane.

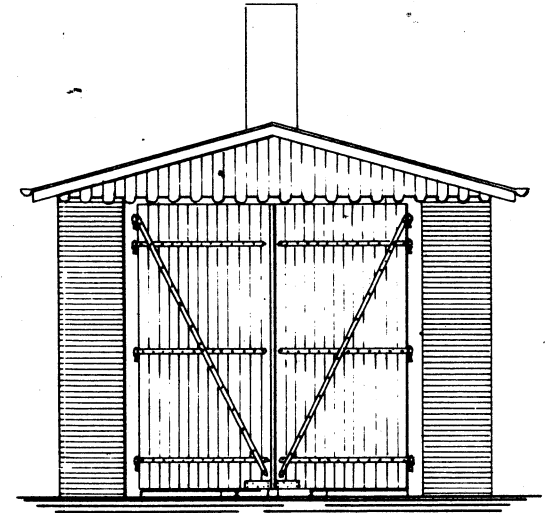
Lokomotivremise til Aakirkeby Station.



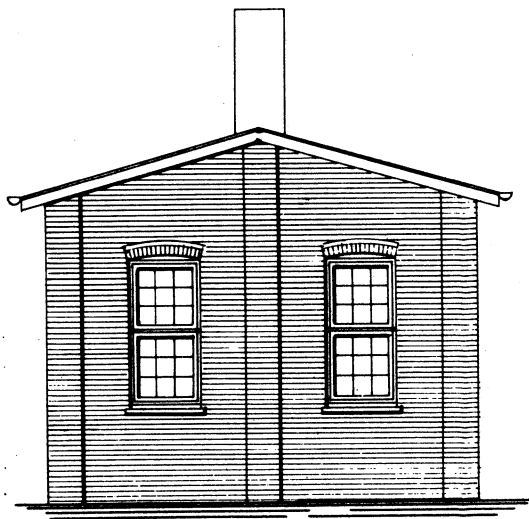
Snit a-a



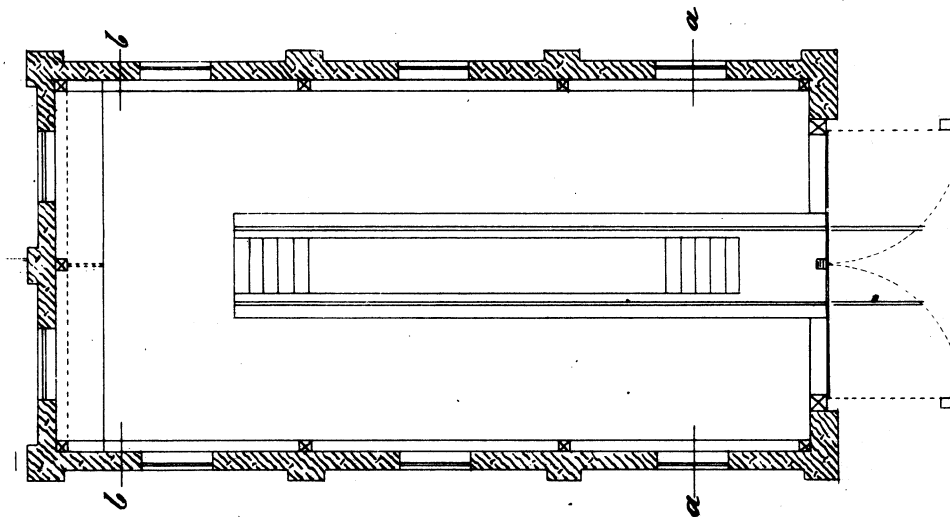
Facade



Østre Gavl



Vestre Gavl



Plan

Ans. no 21 Madsen  
Madsen & Sørensen  
C

