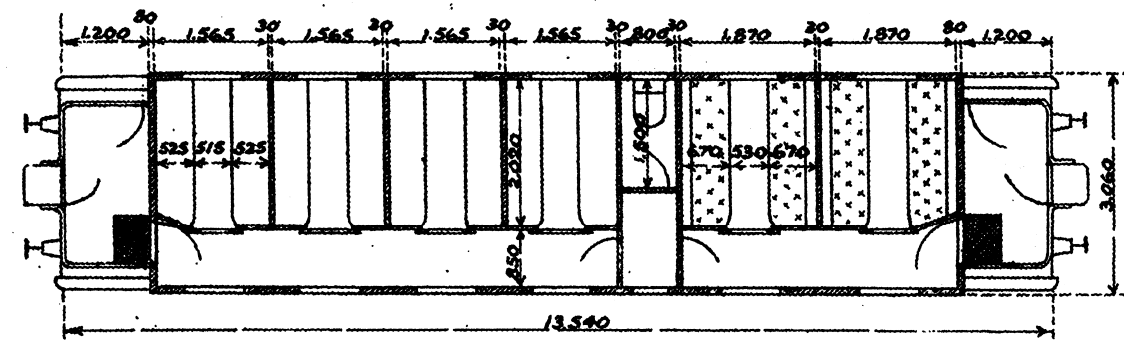
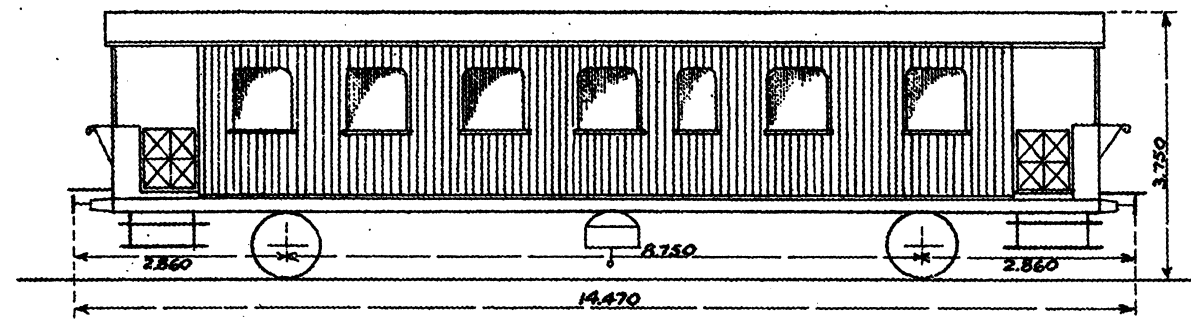
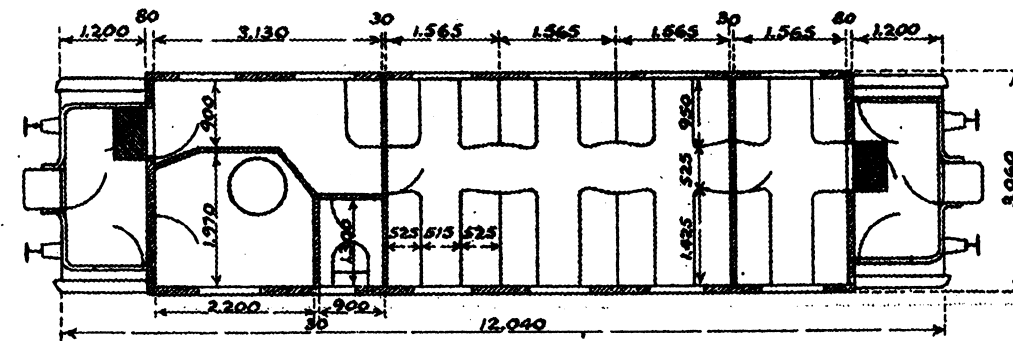
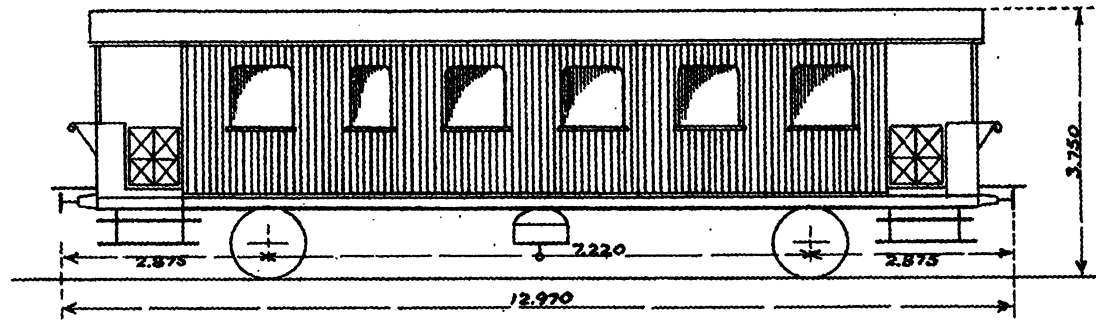


Vognmateriel.

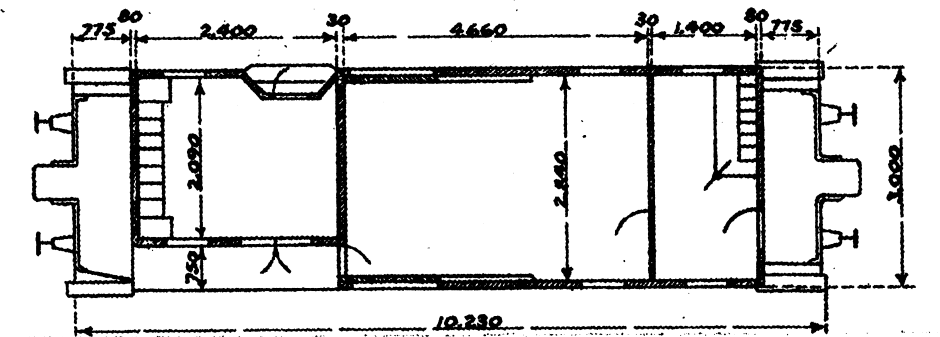
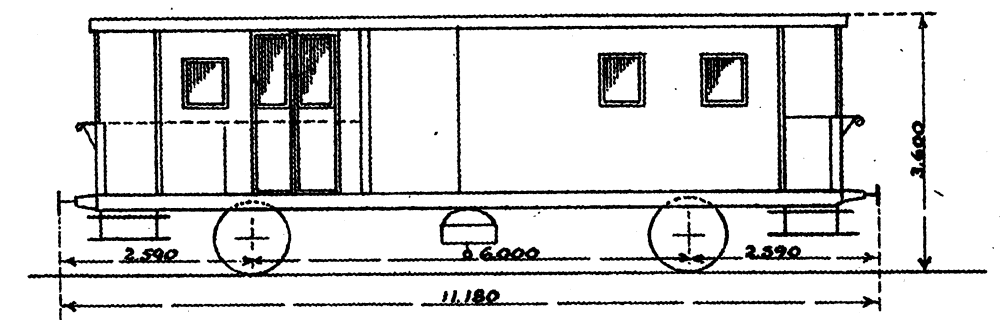
II & III Kl. Personvogn, Type B.



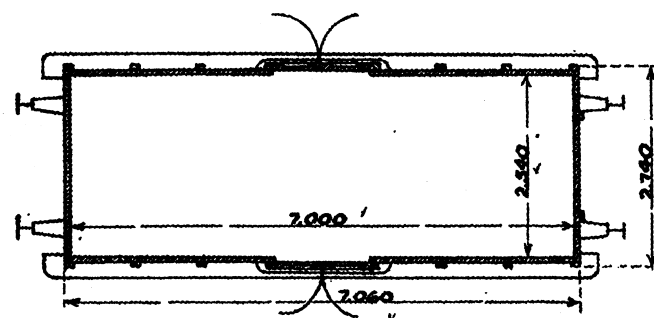
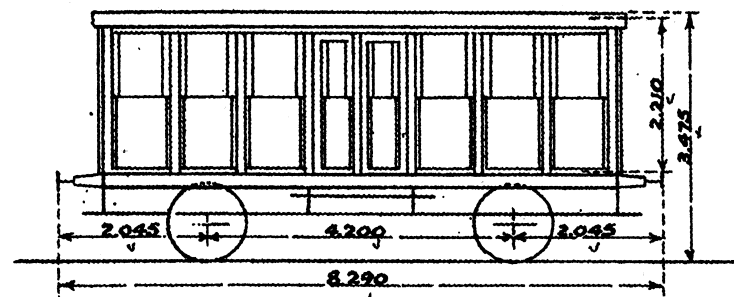
III Kl. Personvogn m. Kjedel, Type C.



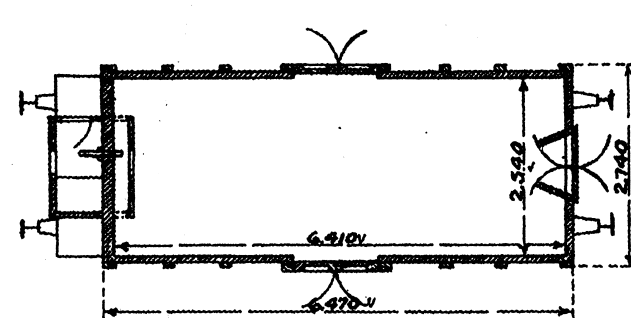
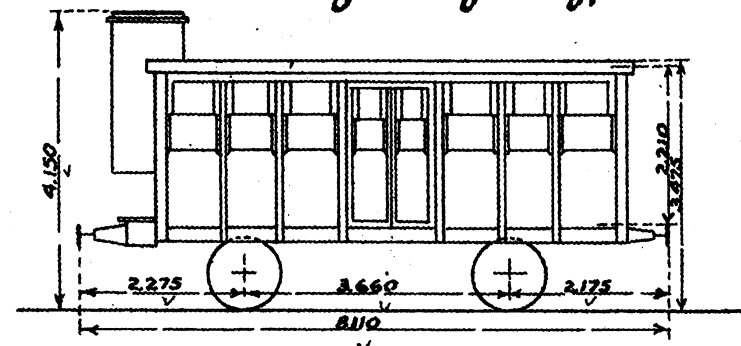
Post- & Bagagevogn.



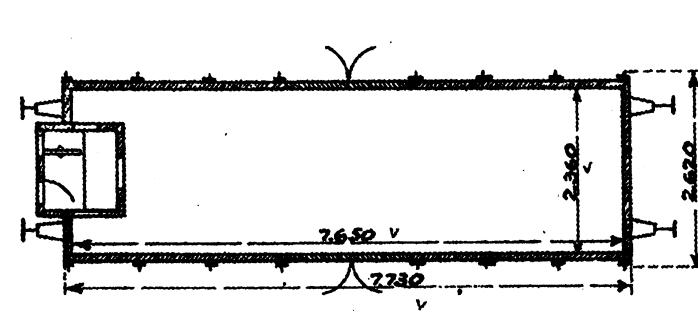
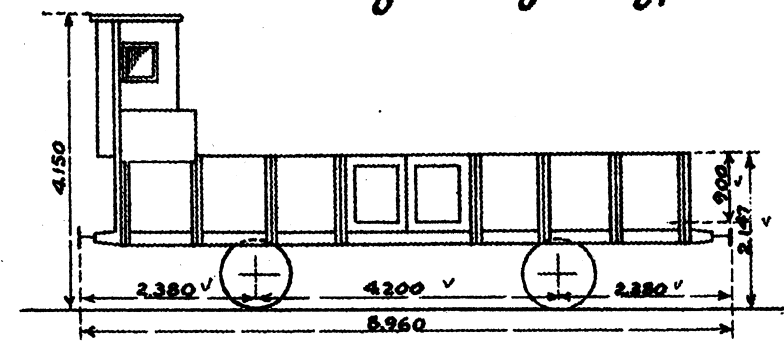
Lukket Godsvogn, Type D.



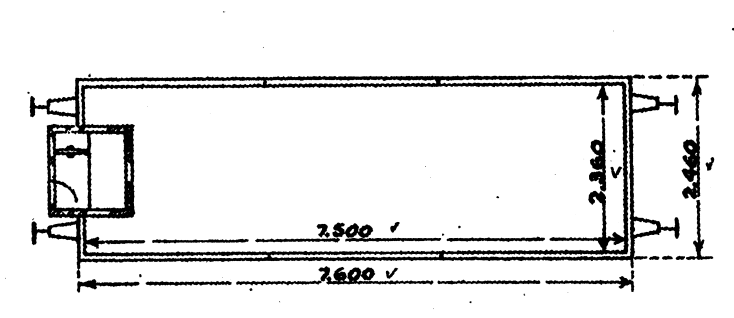
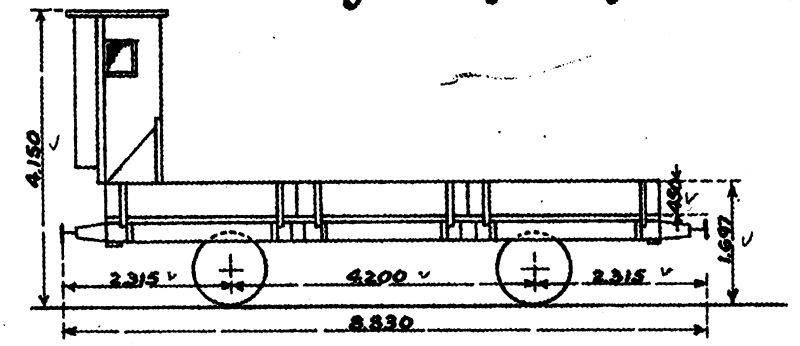
Lukket Godsvogn, Type A.



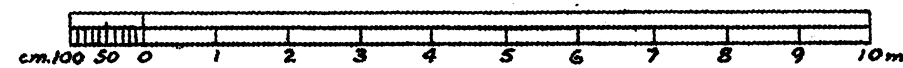
Åbent Godsvogn, Type B.



Åbent Godsvogn, Type F.



1:100.



Ubenævnte Maal er mm.

København, d. 16. Marts 1923.

A. Rip Clausen.