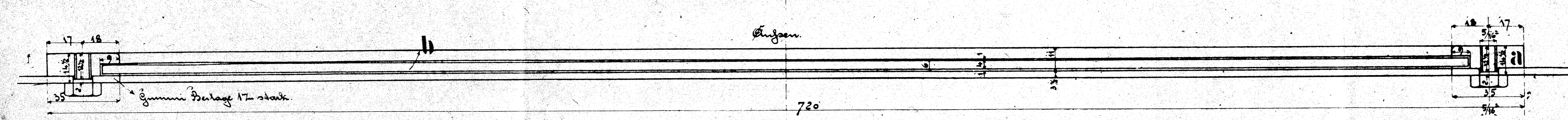
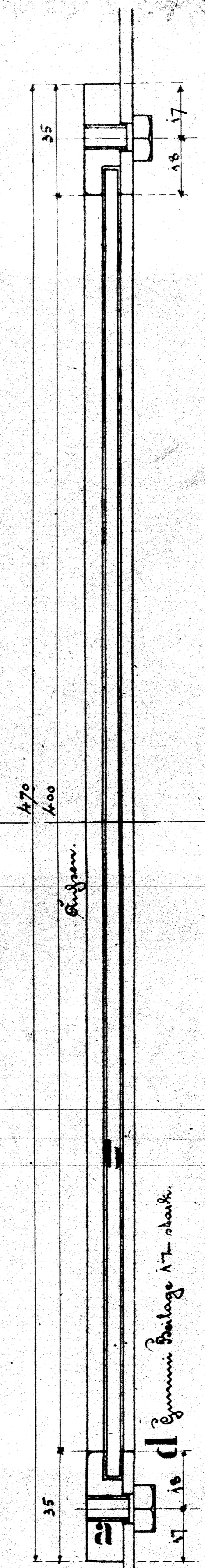
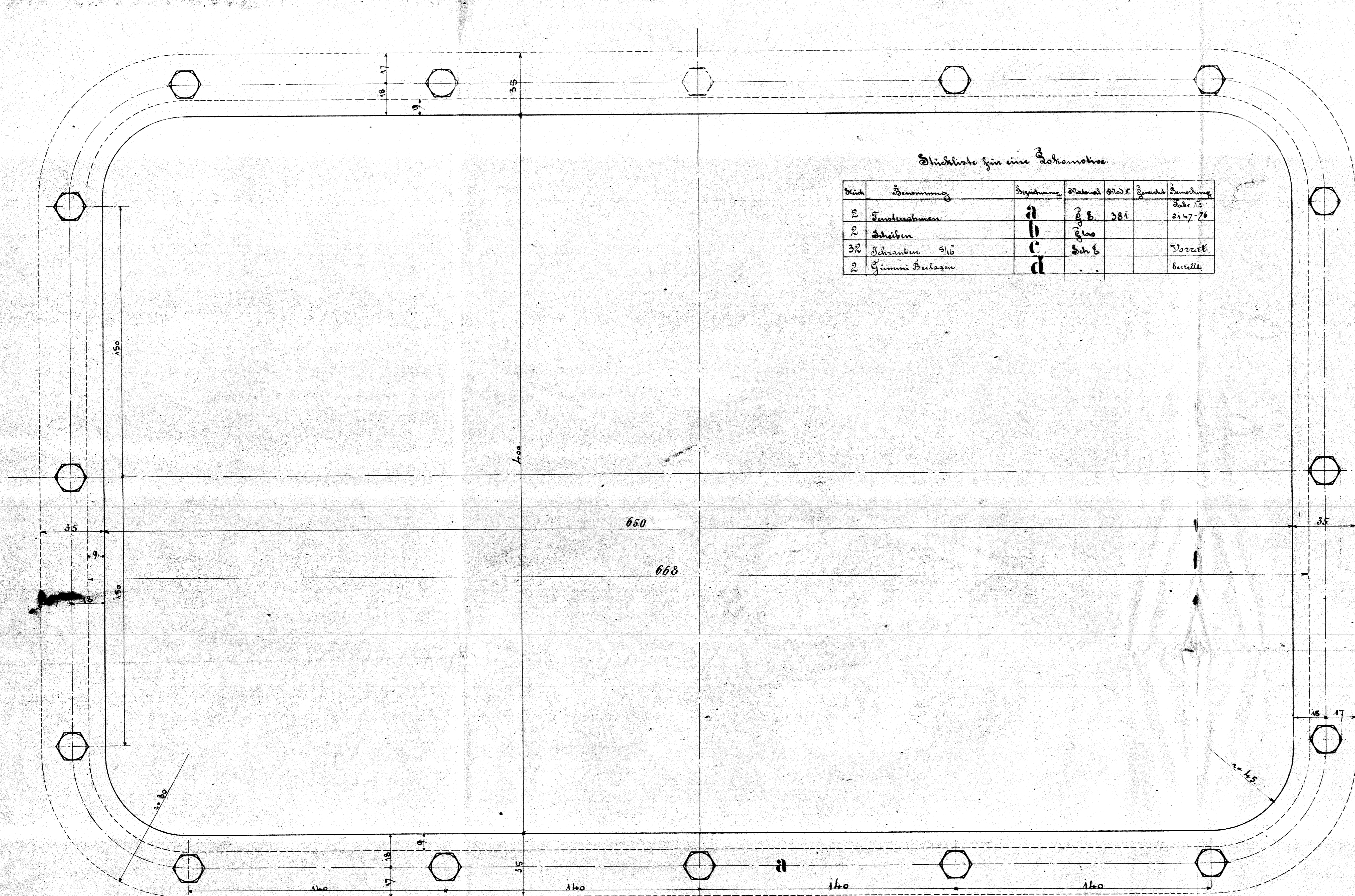


Stückliste für eine Lokomotive

Stück	Benennung	Druckung	Material	GröÙ.	GröÙ.	Benennung
2	Fundamenten	a	St. B.	281		Schr. 12 2147-76
2	Schrauben	b	St. B.			
32	Schrauben 9/16	c	St. B.			Notst.
2	Gummi-Beläge	d				bes. d.



Billliches festes Fenster.