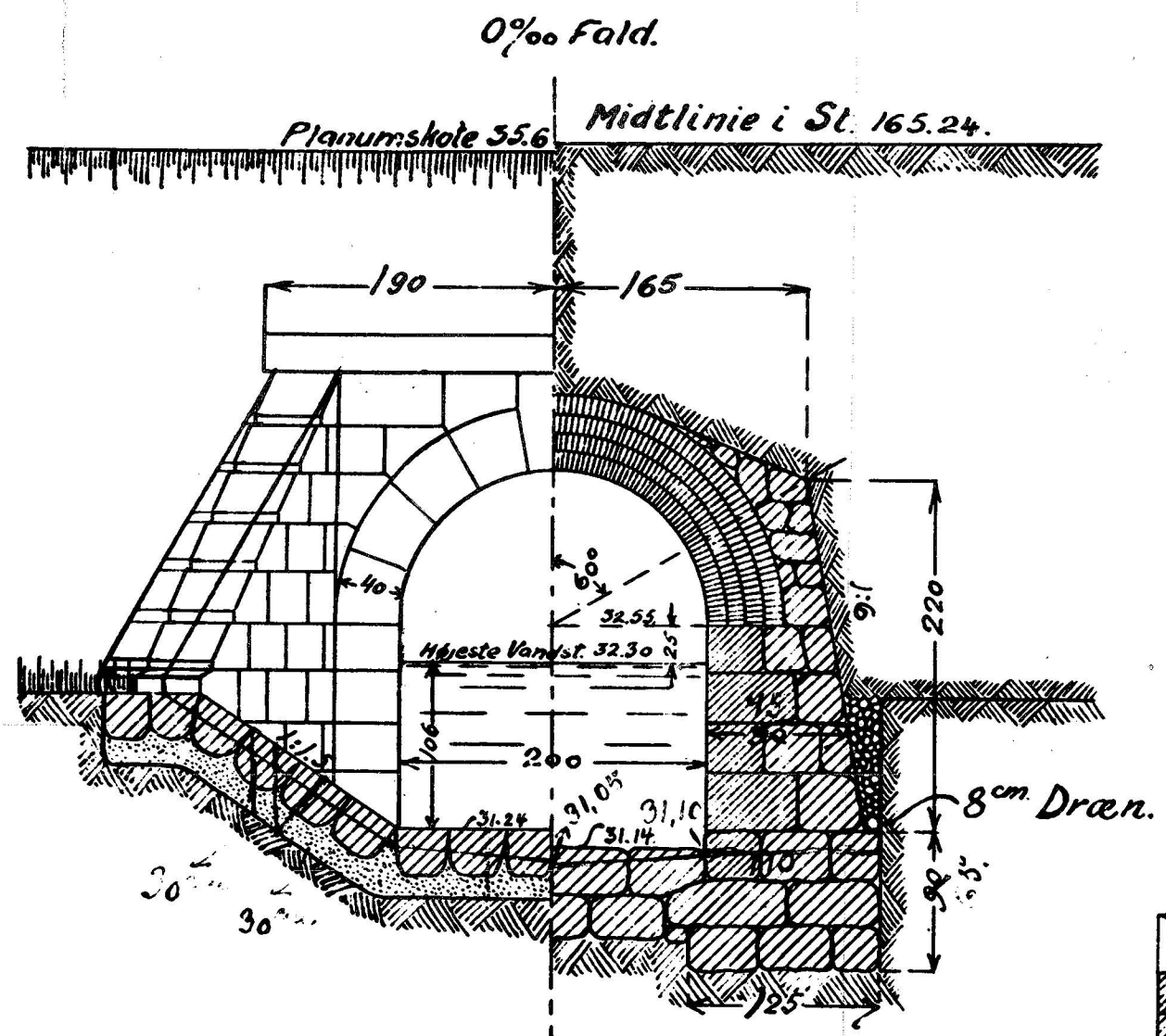
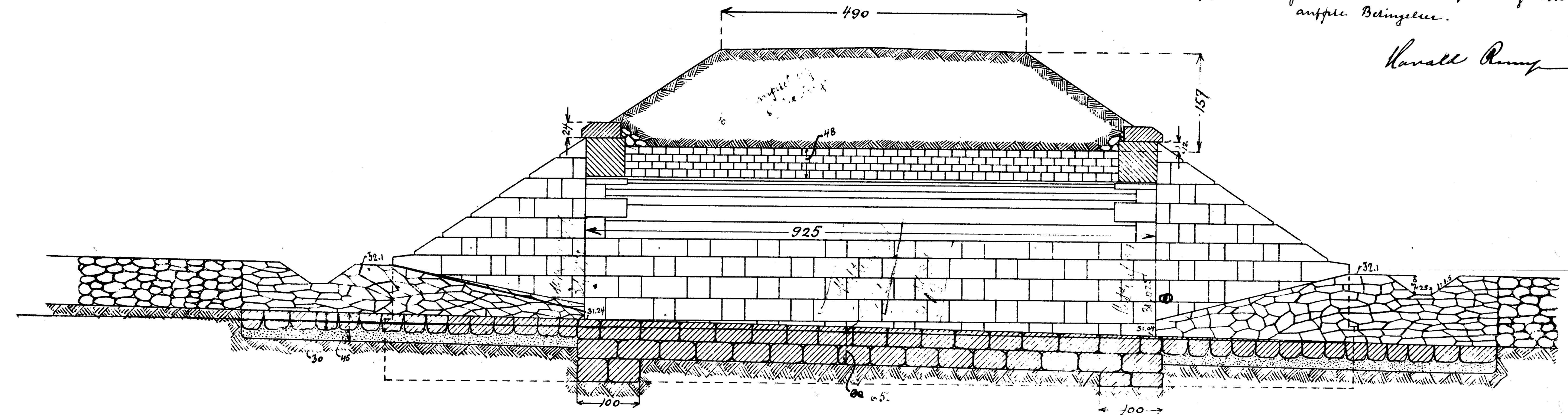
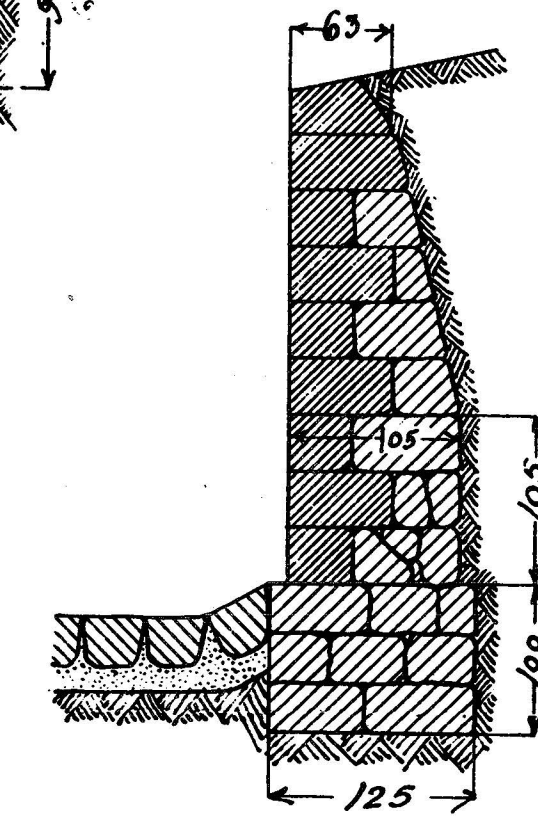
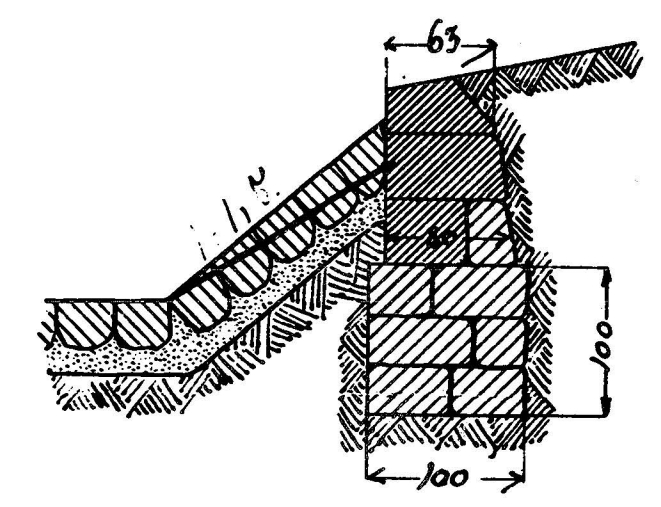


approberet paa de i Skitse af 30. Maj 1910
angivne Betingelser.

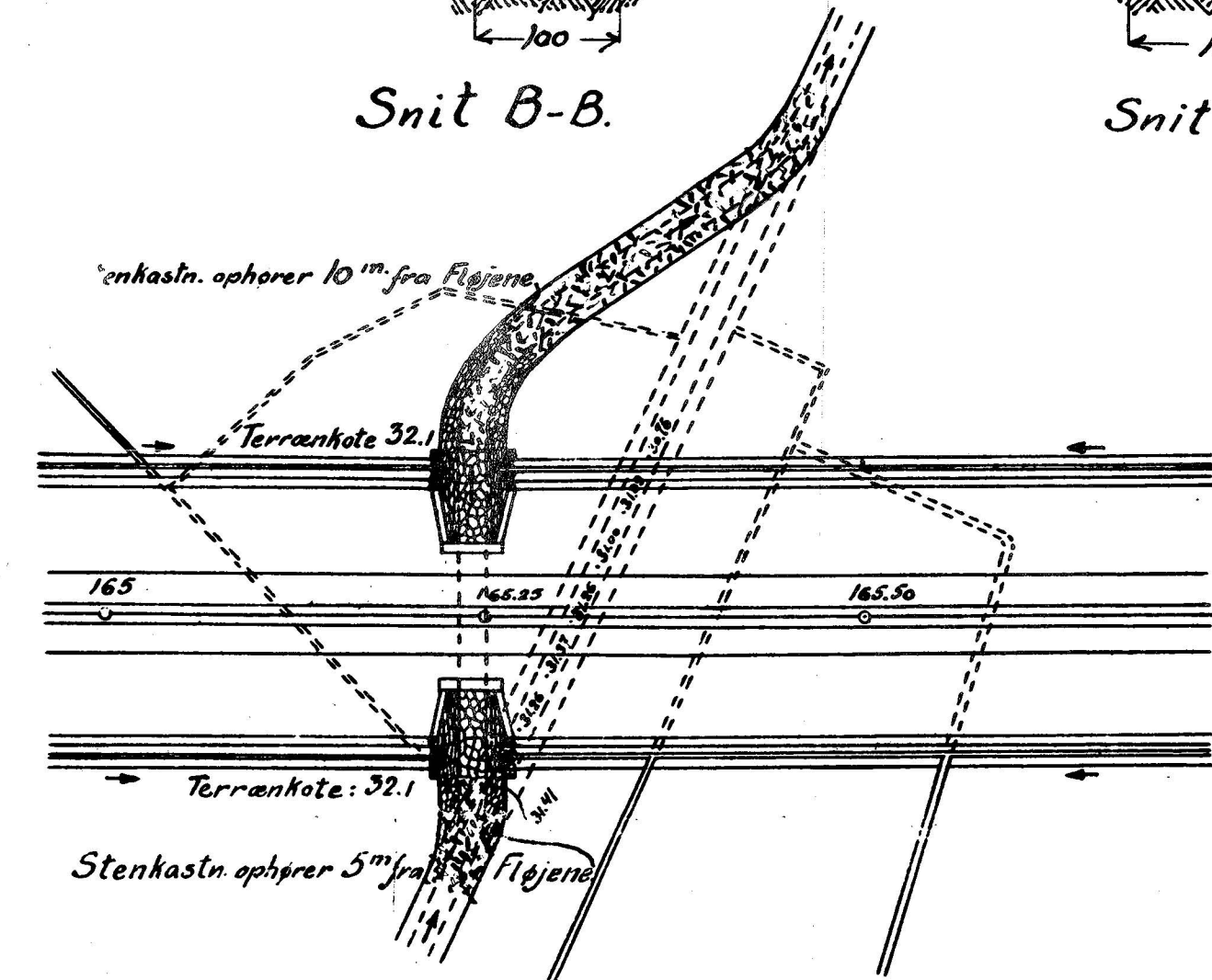
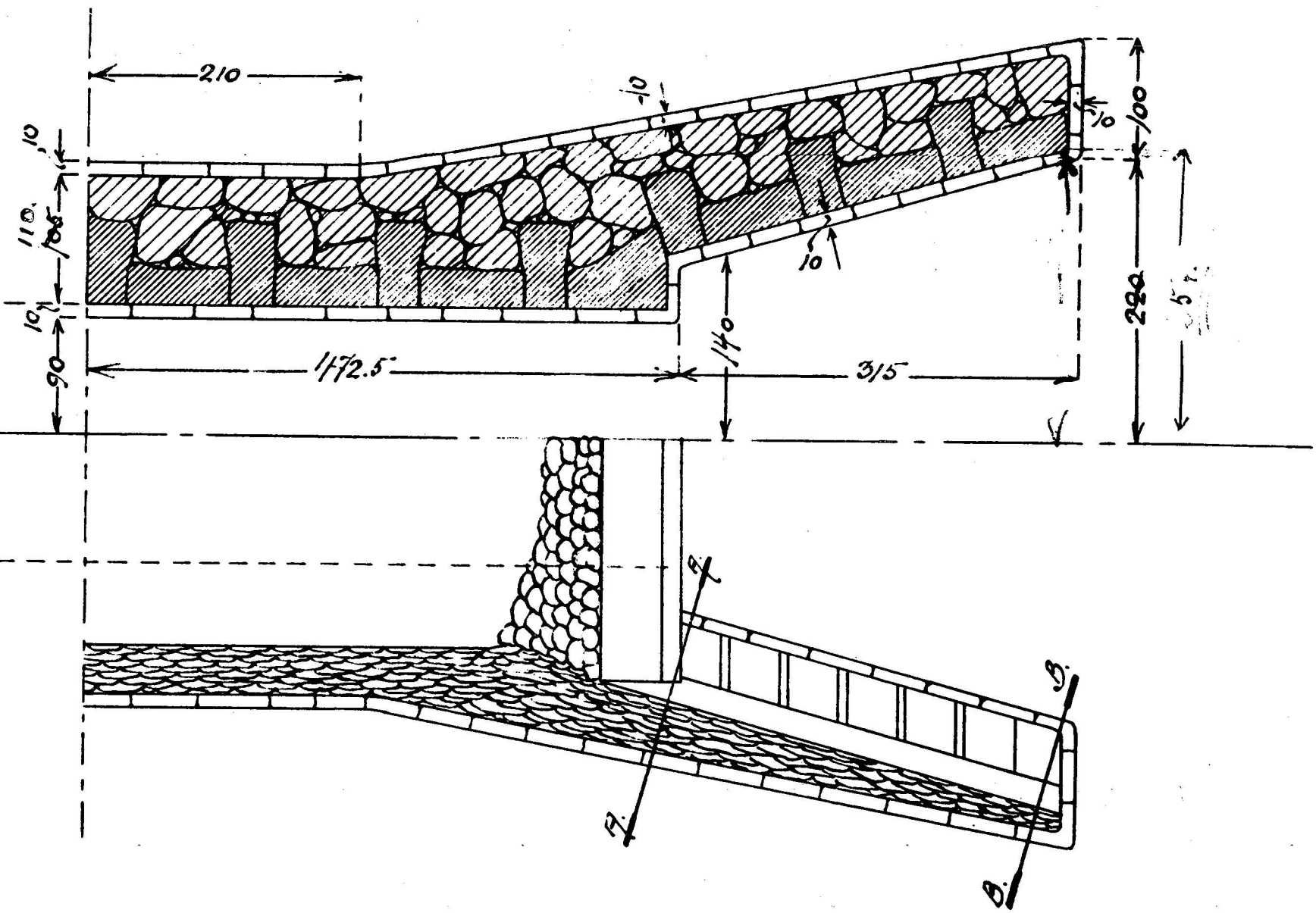
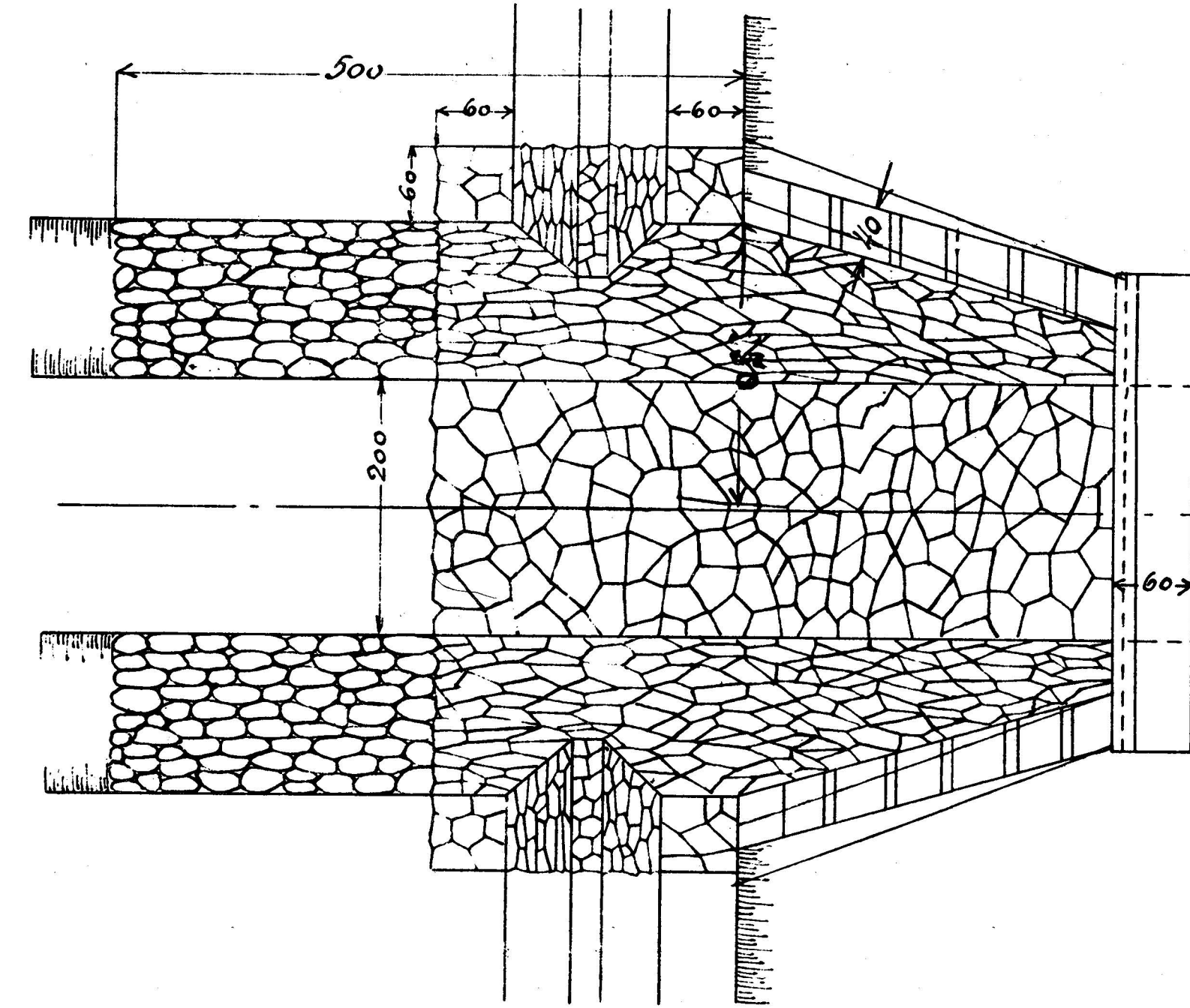
Kanall Romy



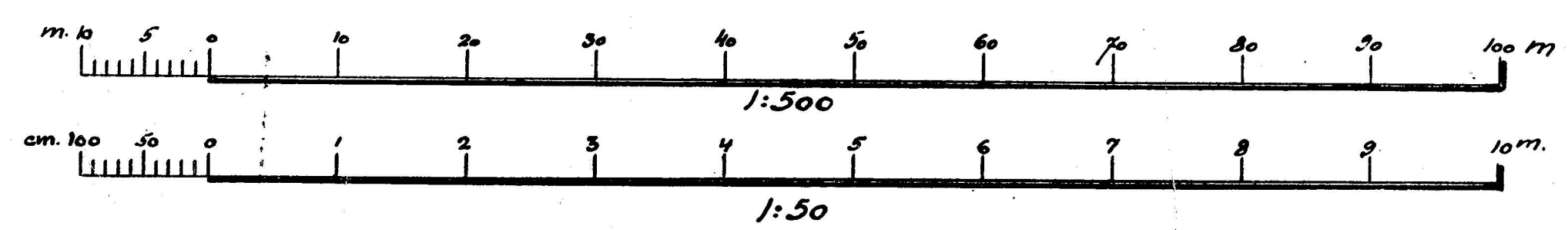
Standrids Tværsnit.



Længdesnit.



Situationsplan. - 1:500.



RINGKØBING = NØRRE OMME JÆRNBANE

2.0 m. hvælvet Bro.

St. 165.24.

Maalestok 1:50 & 1:500.

Alle Maal er i cm.

København d. 9/3 - 1910.