

Maskinrum

Bagagerum

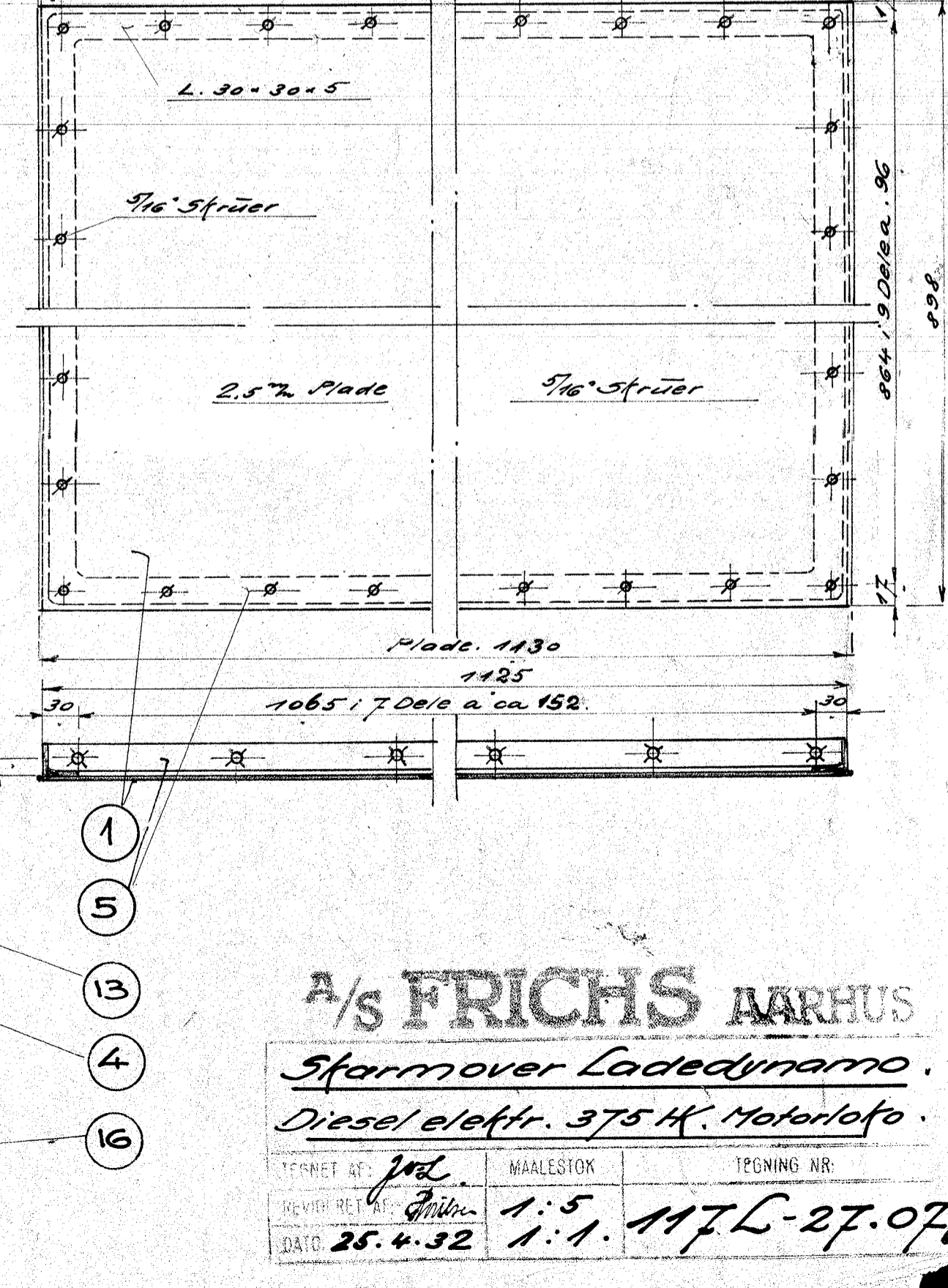
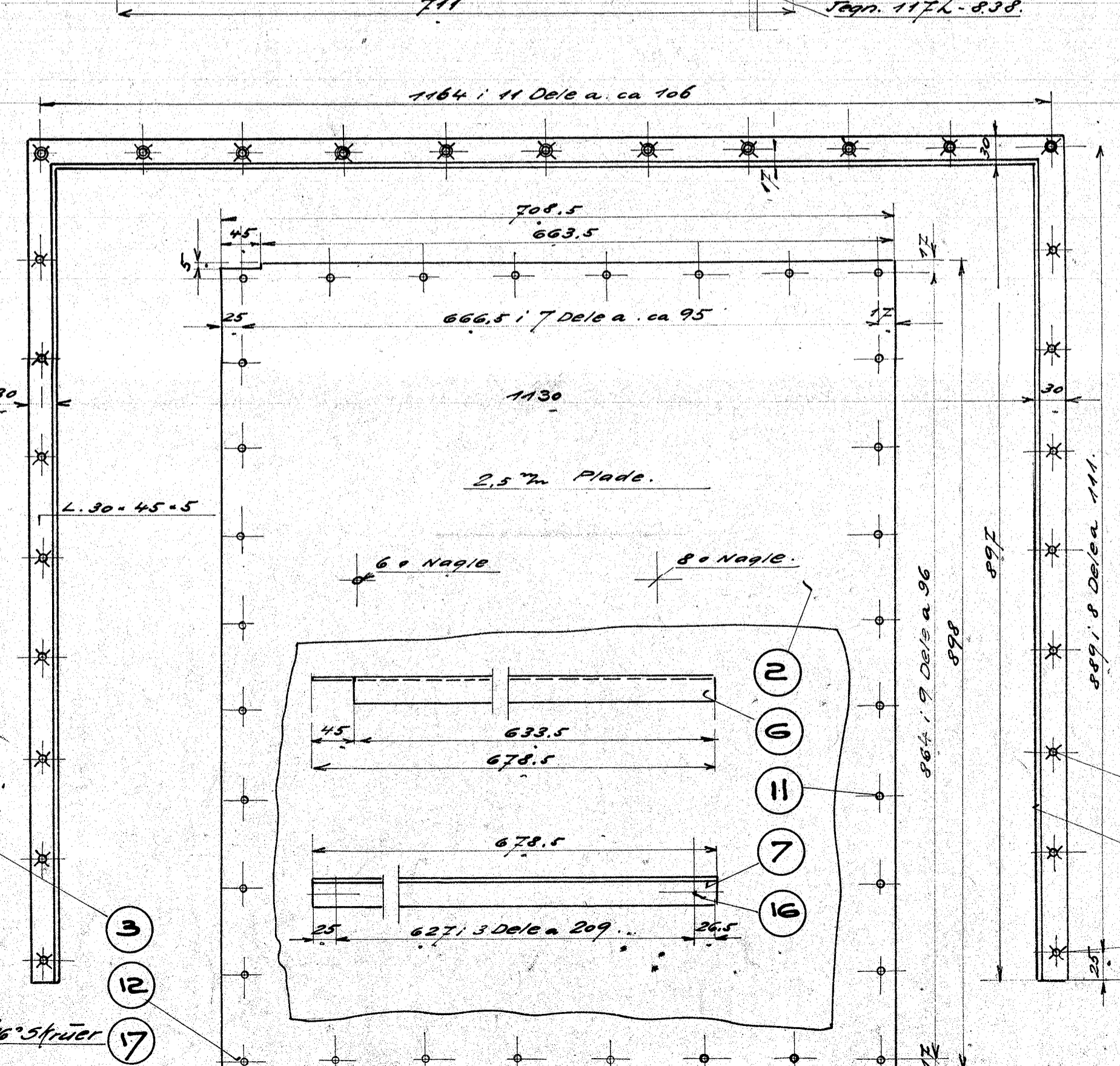
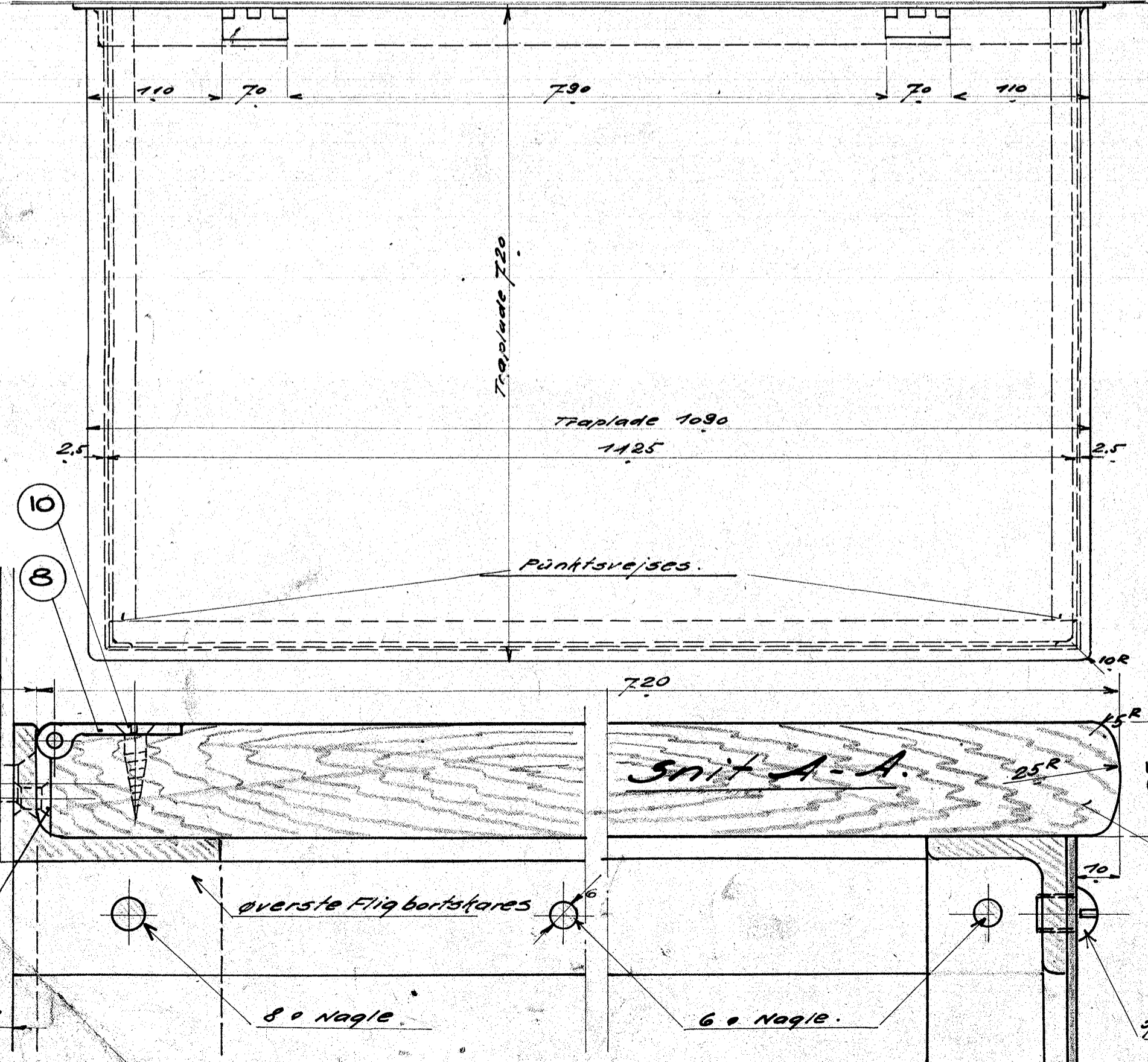
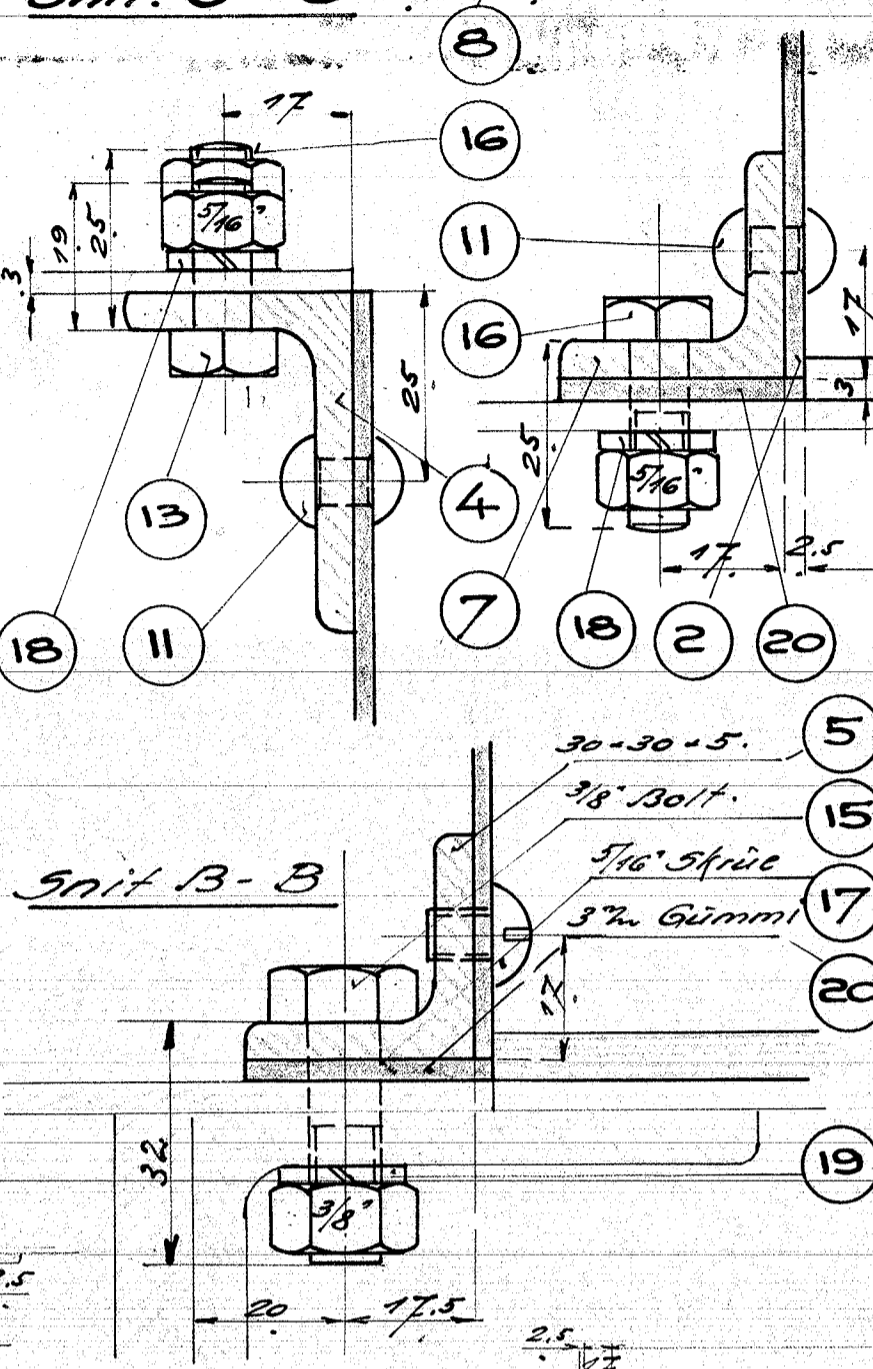
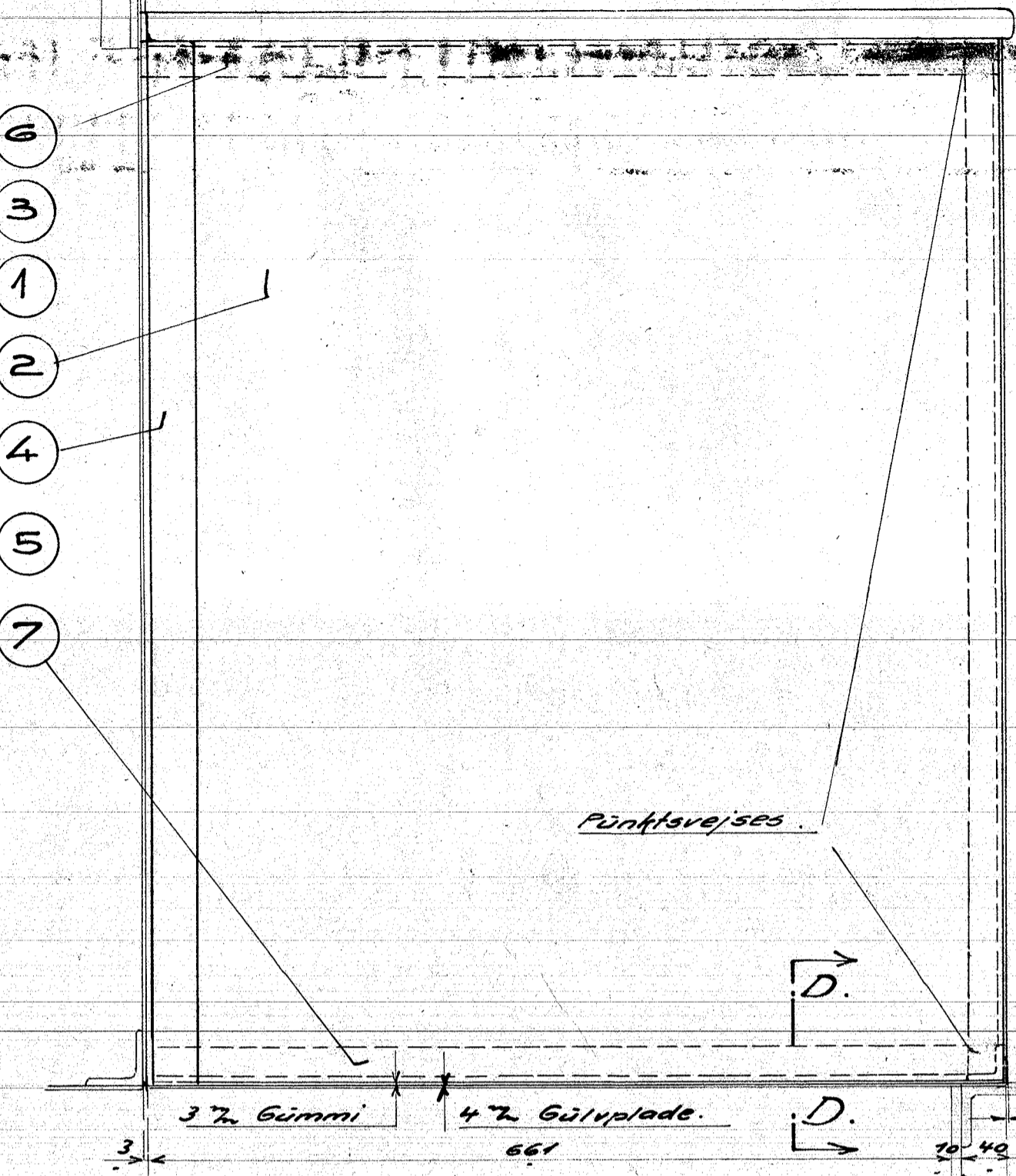
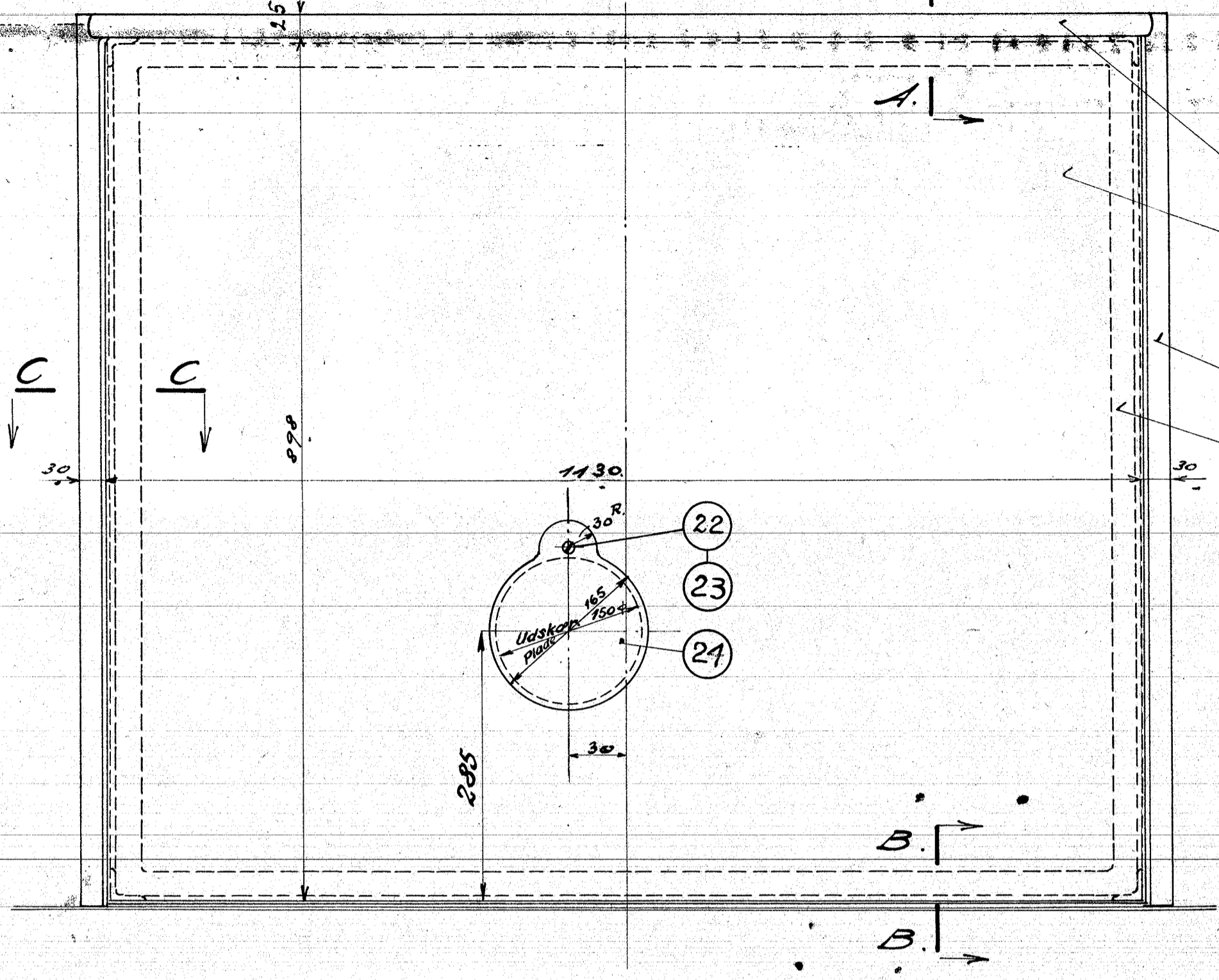
Mellemvægstejn No: 117 L. 15. 76

5 e Nagler fors. paa Forsiden.

No. 10 Traskruer fors. paa Bagsiden.

STYKLISTE NO. 51792-928

STYK	BETEGNELSE	MATE-RIALE	BEARBEJ-GRAD	MUCEL-MAKKE
1	Forplade 1070-898-2.5	Fluorjern		1150x910 x2.5
2	Endeplader 708.5-2.5	Fluorjern		1518x1495 x910x2.5
3	Dækplade	Fluorjern		
4	Vinkelramme	Fluorjern		L 45x30x5 + 3000
5	do.			L 30x30x5 + 4850
6	Ligevinkel 1518 h. 1. v.			L 30x30x5 + 1450
7	do.			
8	Hængler 70-55	Stål		Købes.
9	Nagler for do. 6 e-16	Withjern		Magasin
10	Traskruer No 8-19	Fluorjern		
11	60 Nagler 6 e-16	Withjern		
12	do. 8 e-24			
13	14 sorte Bolte m. Hoved 1/16" 19	Fluorjern		
14	do. 12	Stålers		
15	8 do. sekst. Hoved 3/8" 38			
16	10 do. 5/16" 25			
17	40 Skrue 5/16" 40 keph. H.			
18	28 Federskrue 5/16"	Stål		
19	8 do. 3/8"			
20	1. Mellemvæg	Gummi		65x4 = 2450
21	1 Plade 2.5 Tm	Fluorjern		Affald.
22	1 Skruer 5/16" 15 keph. H.			Magas.
23	2 Møtrik 5/16"			



A/S FRICHS AARHUS
 Starmover Ladedynamo
 Diesel elektr. 375 Hk. Motorloft
 TEGNING NR. 117 L. 27. 07 a
 MAALESTOK 1:5
 DATO 25.4.32