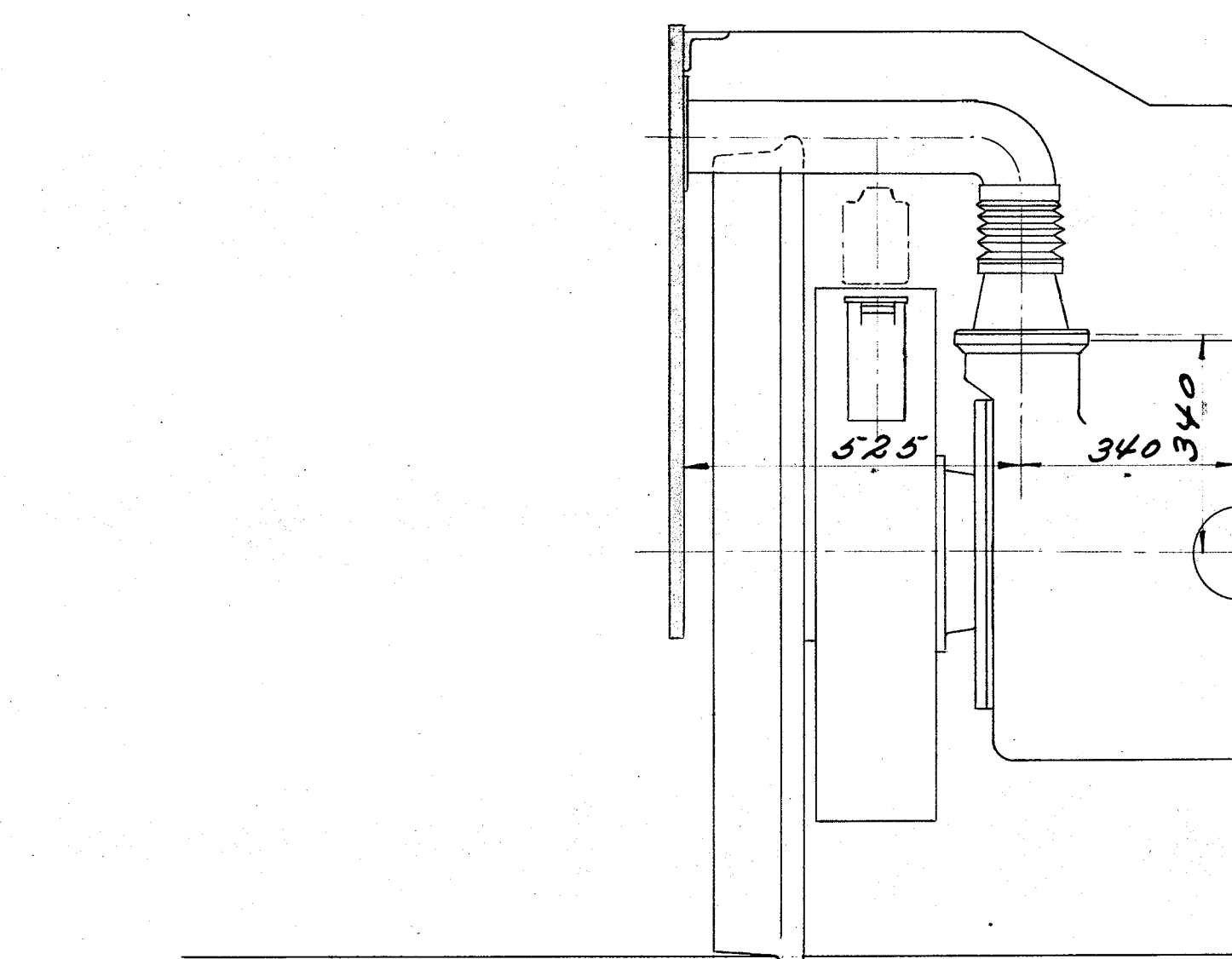
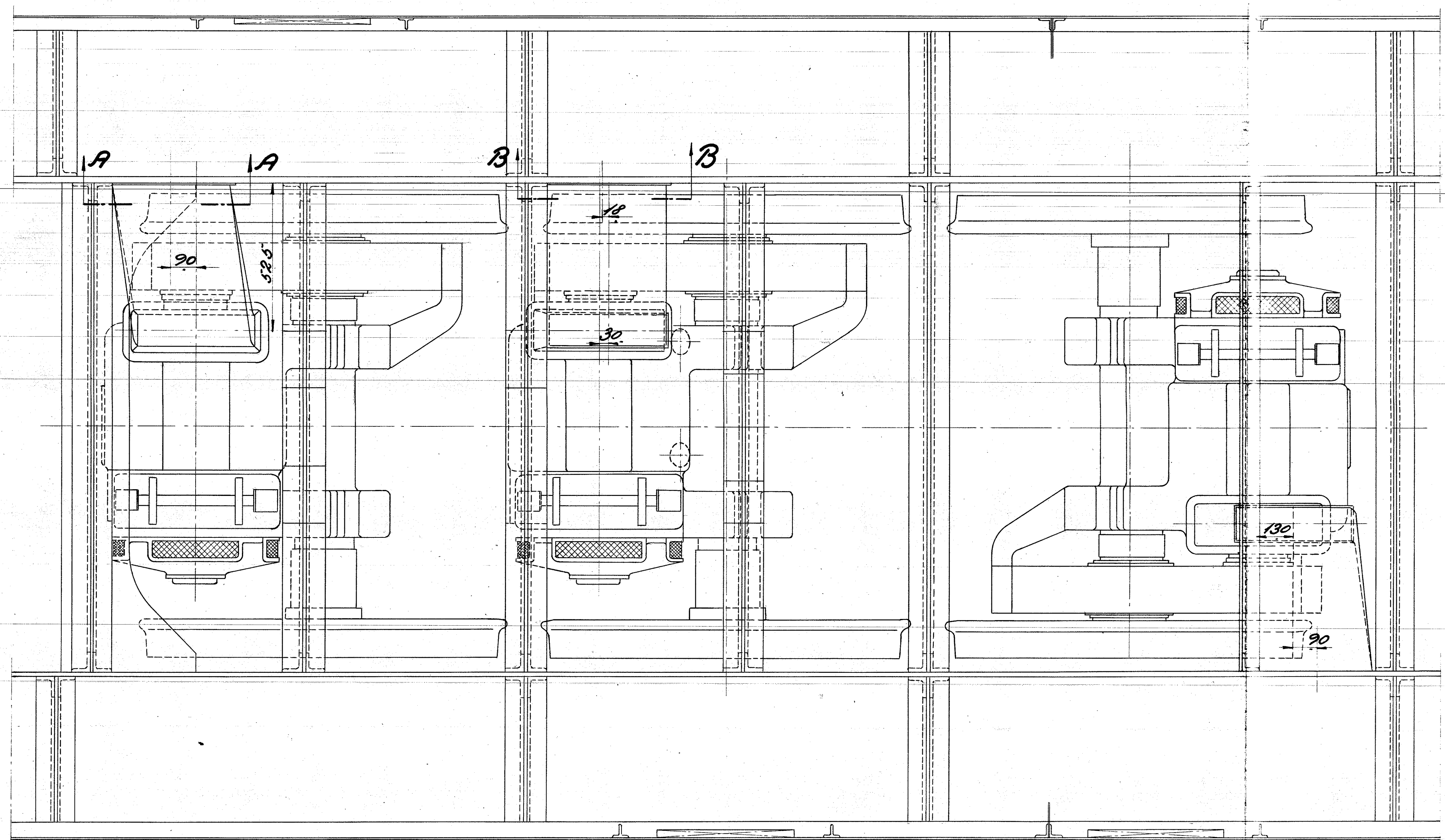
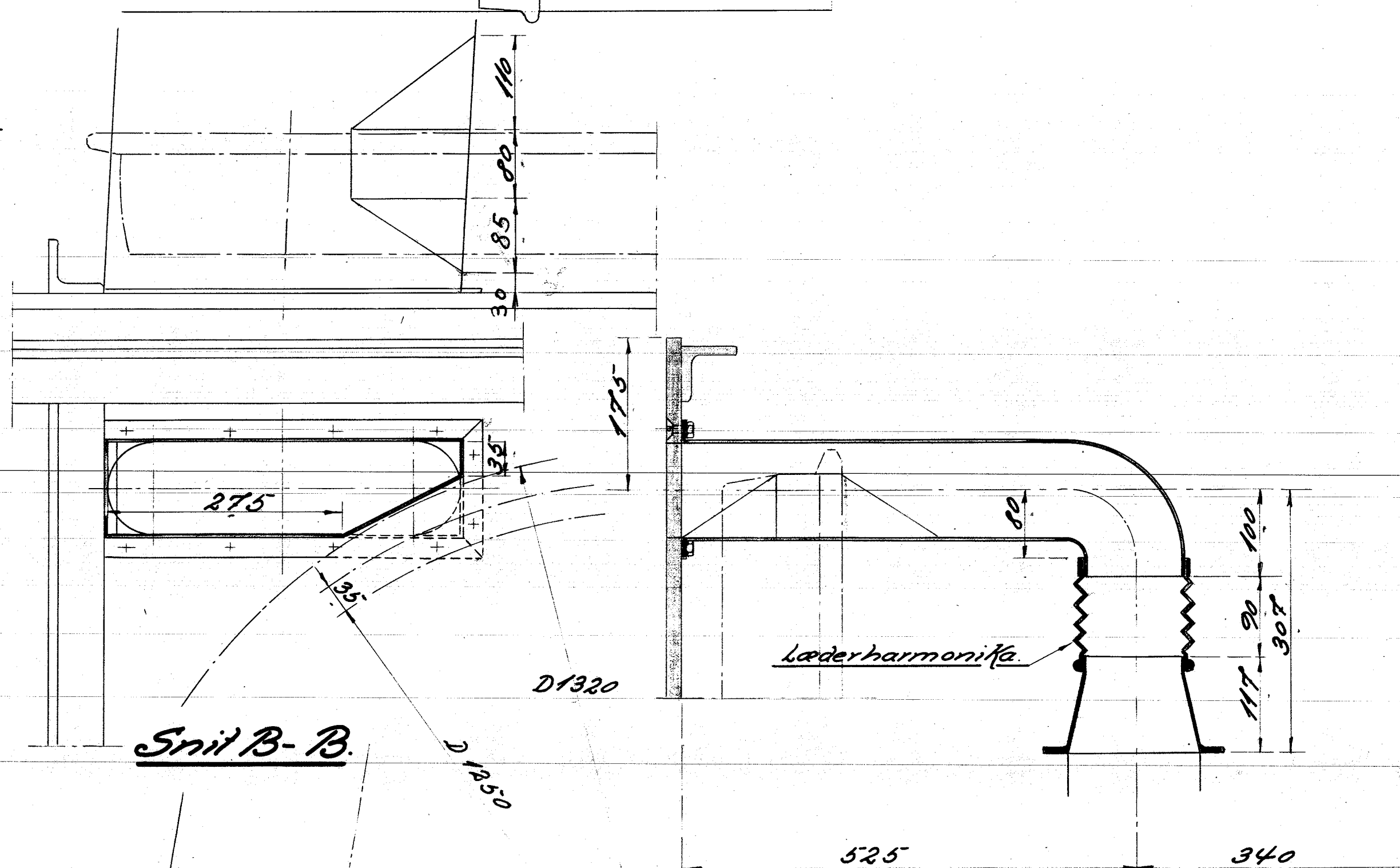


Elektromotorer se Teg. 1171-2136

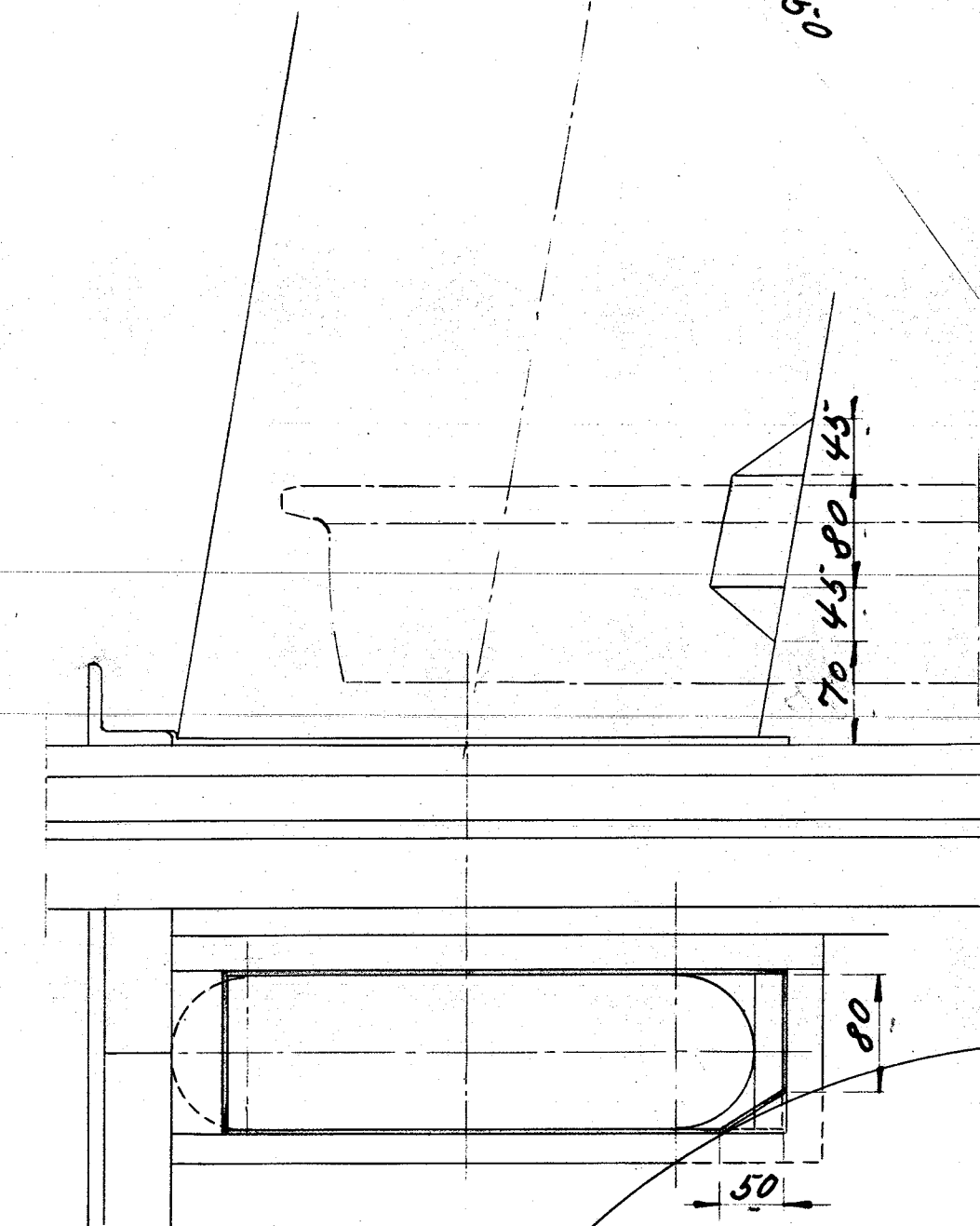


Gennemstrømningsareal
 Ved Elektromotoren: $15 \cdot 46 = 690 \text{ cm}^2$
 Mindste Tværsnit i Luftkanal $312 \cdot 15 = 4680$
 i Rammeklade: $305 \cdot 110 + \frac{\pi}{4} \cdot 11^2 = 430$



Snit B-B

Remontidelen refererer til Teg. 1171-2160



Snit A-A

Luftkanal til Elektromotor
 Diesel-er. 400/415 H. Motorfab. København

Ripensal	mm	Tegn.
82	1.10	
28-1-32	1.25	1171-2155