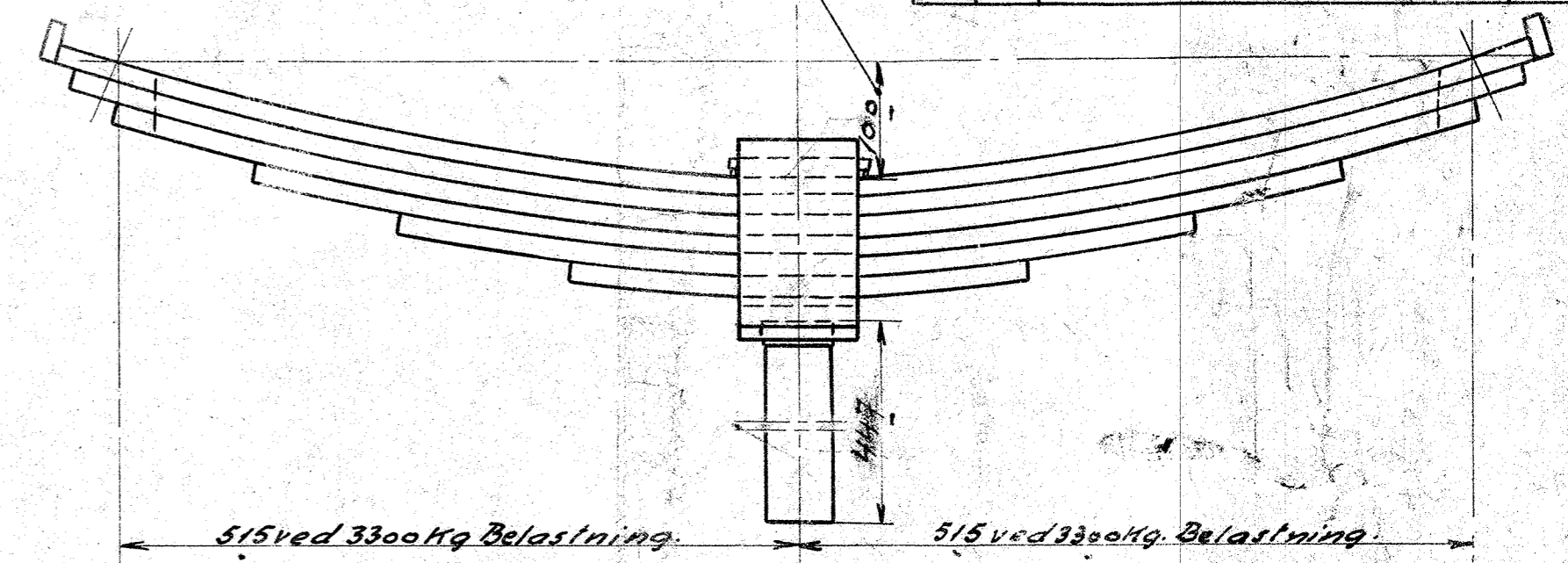


51711

1.	4	Fjeder komplet	Fjeder = Støt	Købes	
2.	4	Fjederstøtte	Fosil	574x1840	

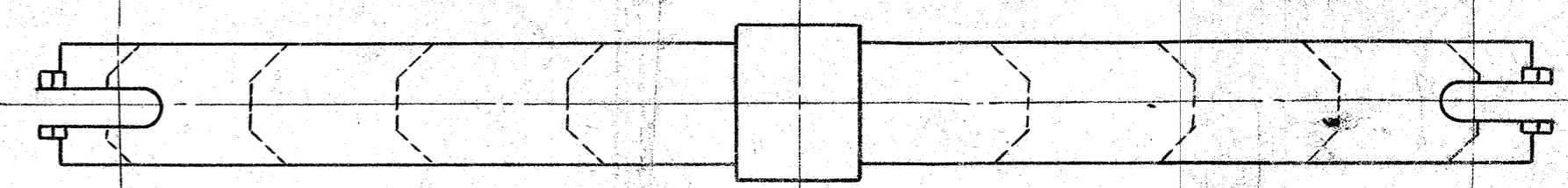
Pilhøjde ubelastet 100mm.

" belastet ved 3900kg. 45mm.



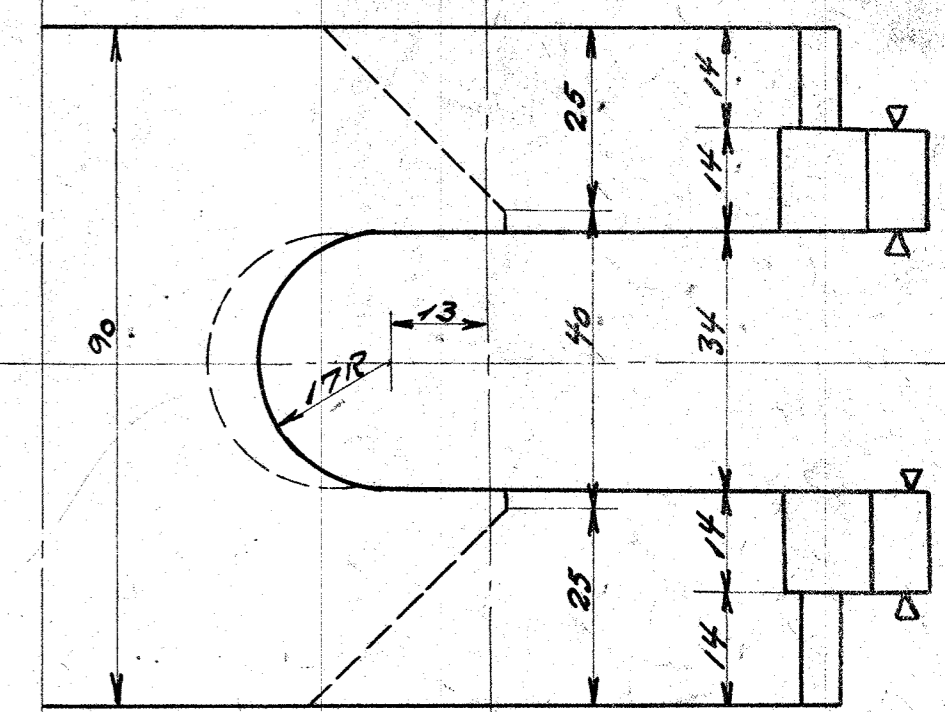
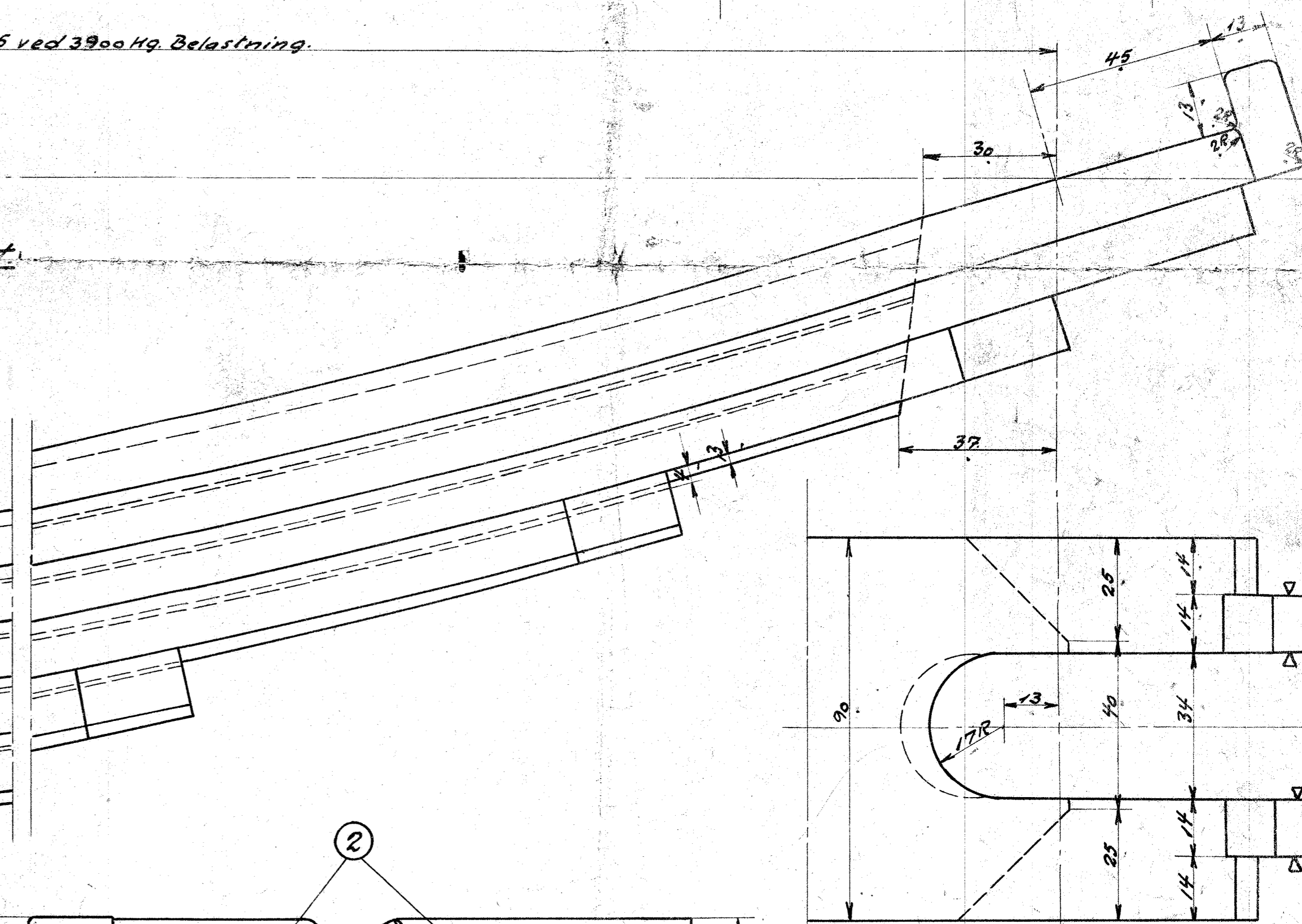
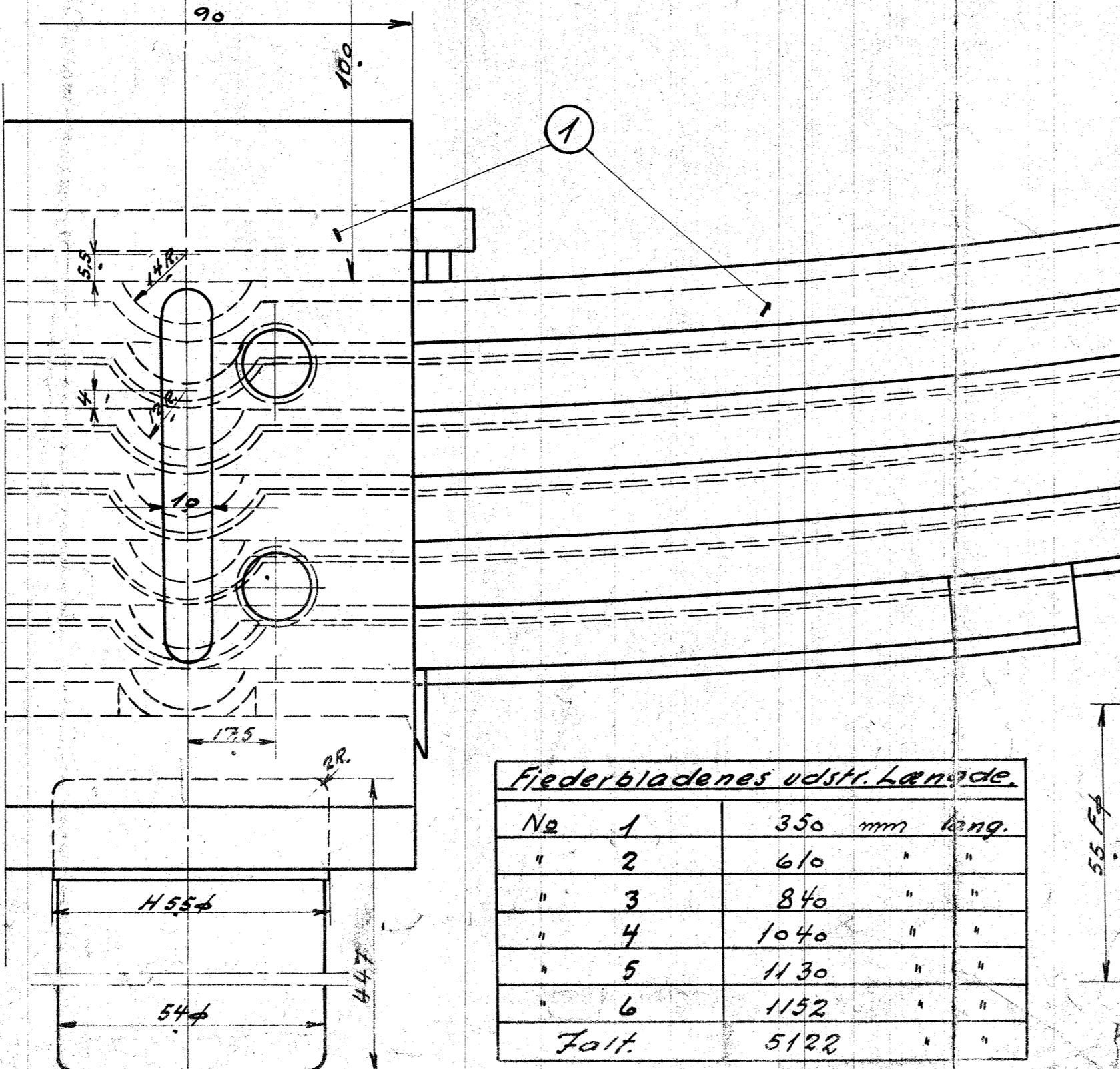
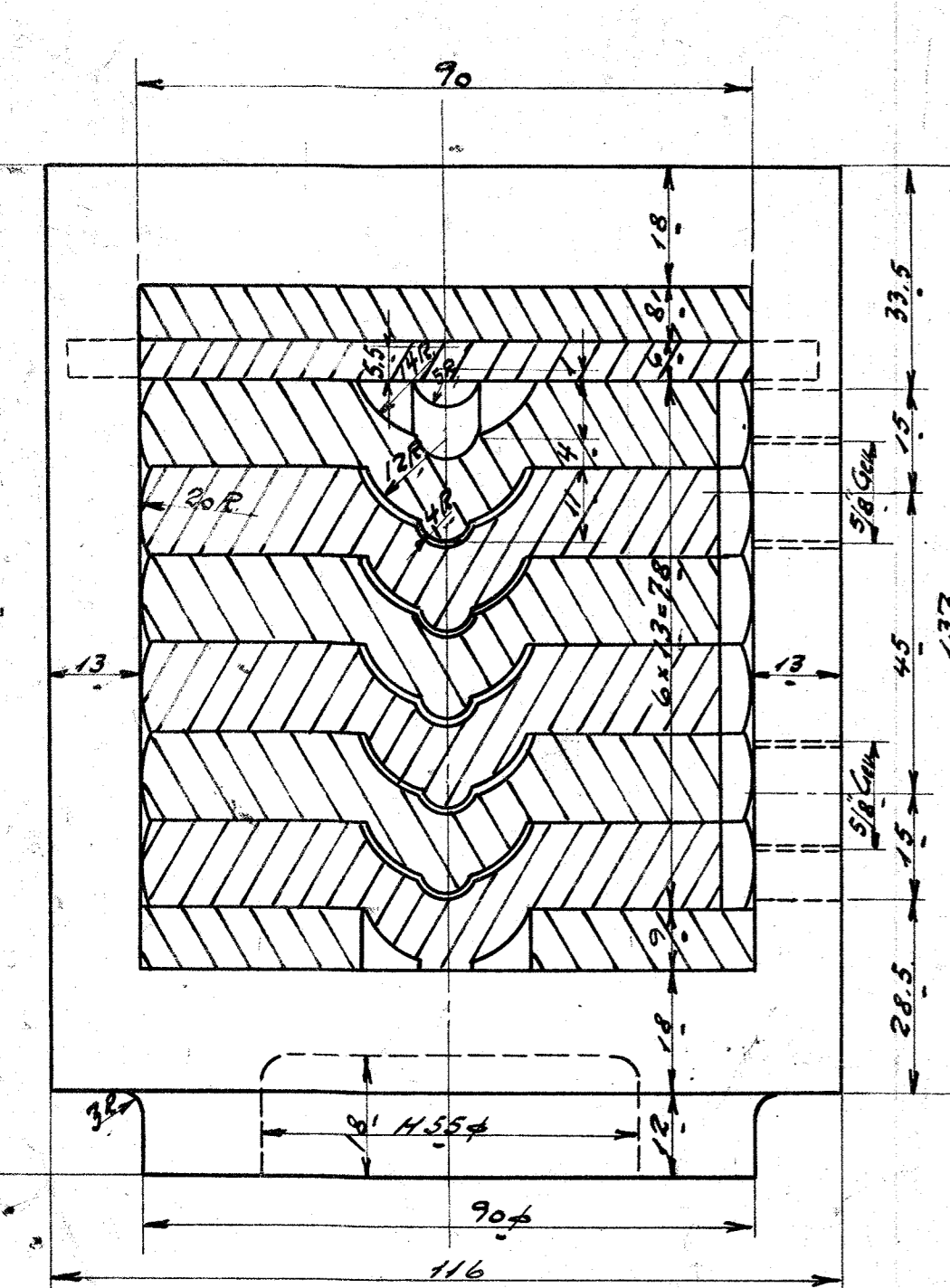
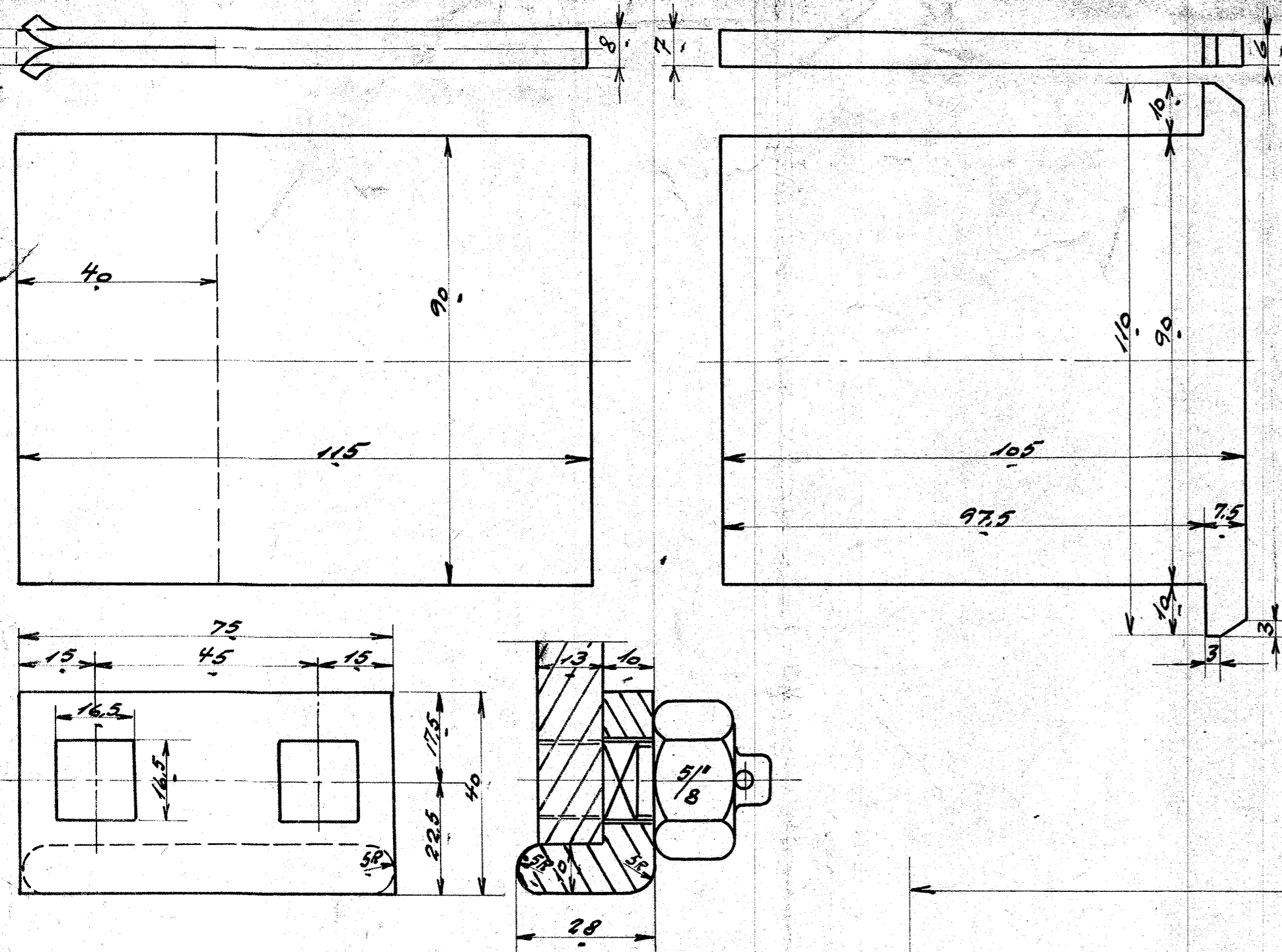
515 ved 3300kg Belastning.

515 ved 3300kg Belastning.



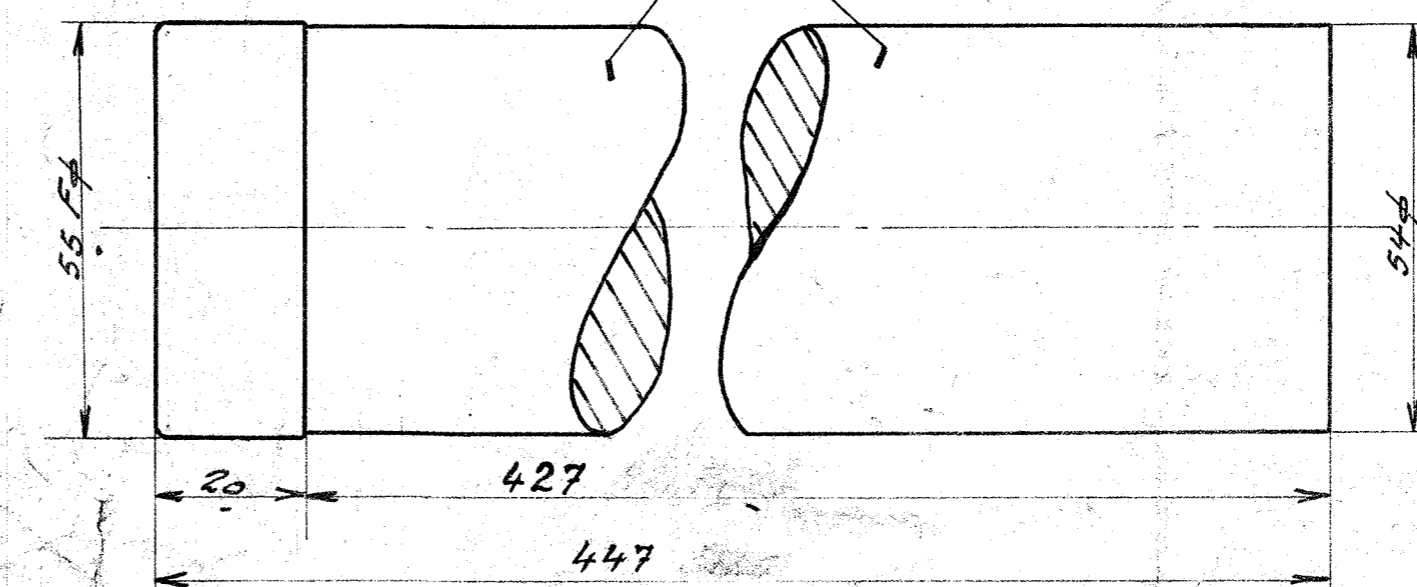
515 ved 3900kg Belastning.

Fjederen er tegnet ubelastet.



Fjederbladenes udstr. Længde

No	1	350 mm lang.
"	2	610 " "
"	3	840 " "
"	4	1040 " "
"	5	1130 " "
"	6	1152 " "
Falt.		5122 " "



Bærefjedertil Radialaksel.
 Diesel-el. 375Hc. Motorloko.
 R.T.
 R.T. 1:5.
 10/21931/1
 1176-13.78