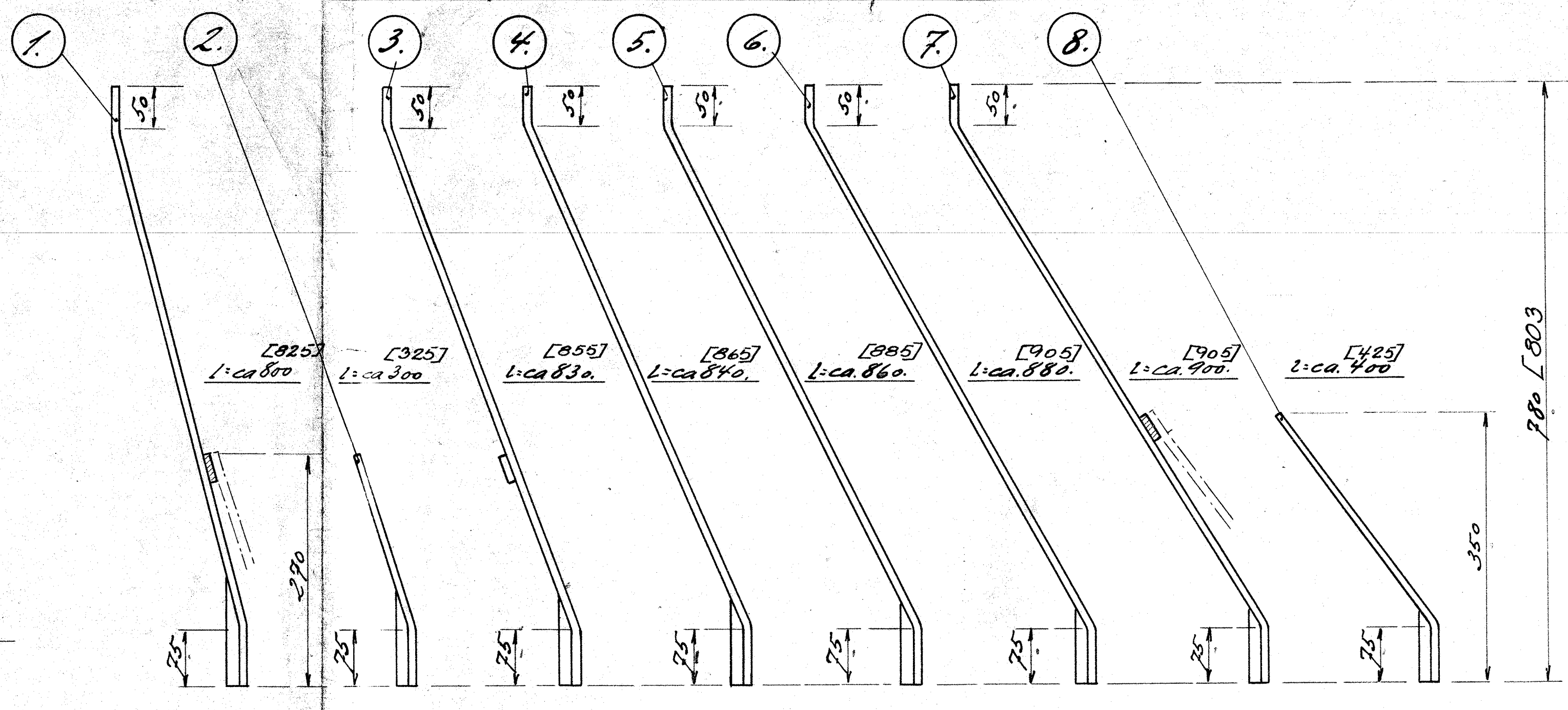
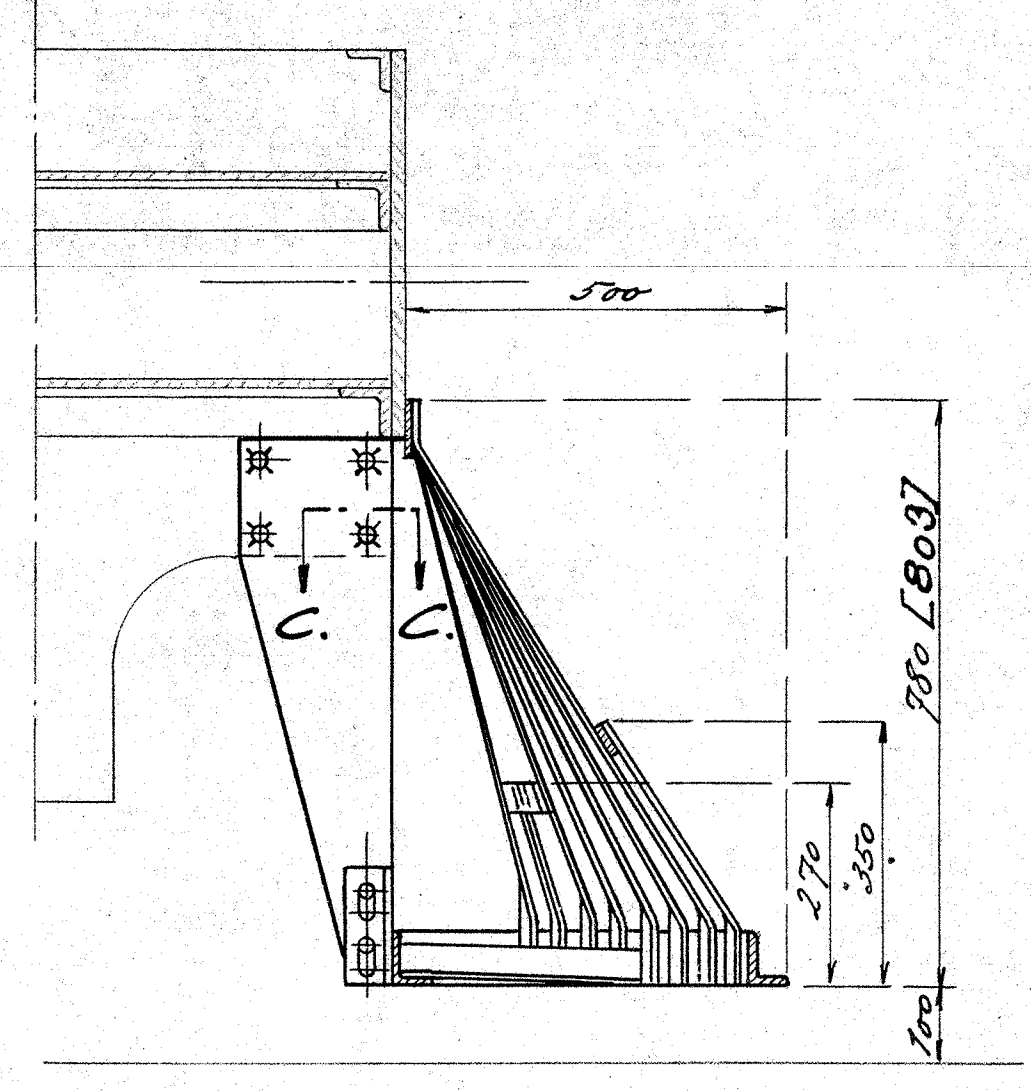
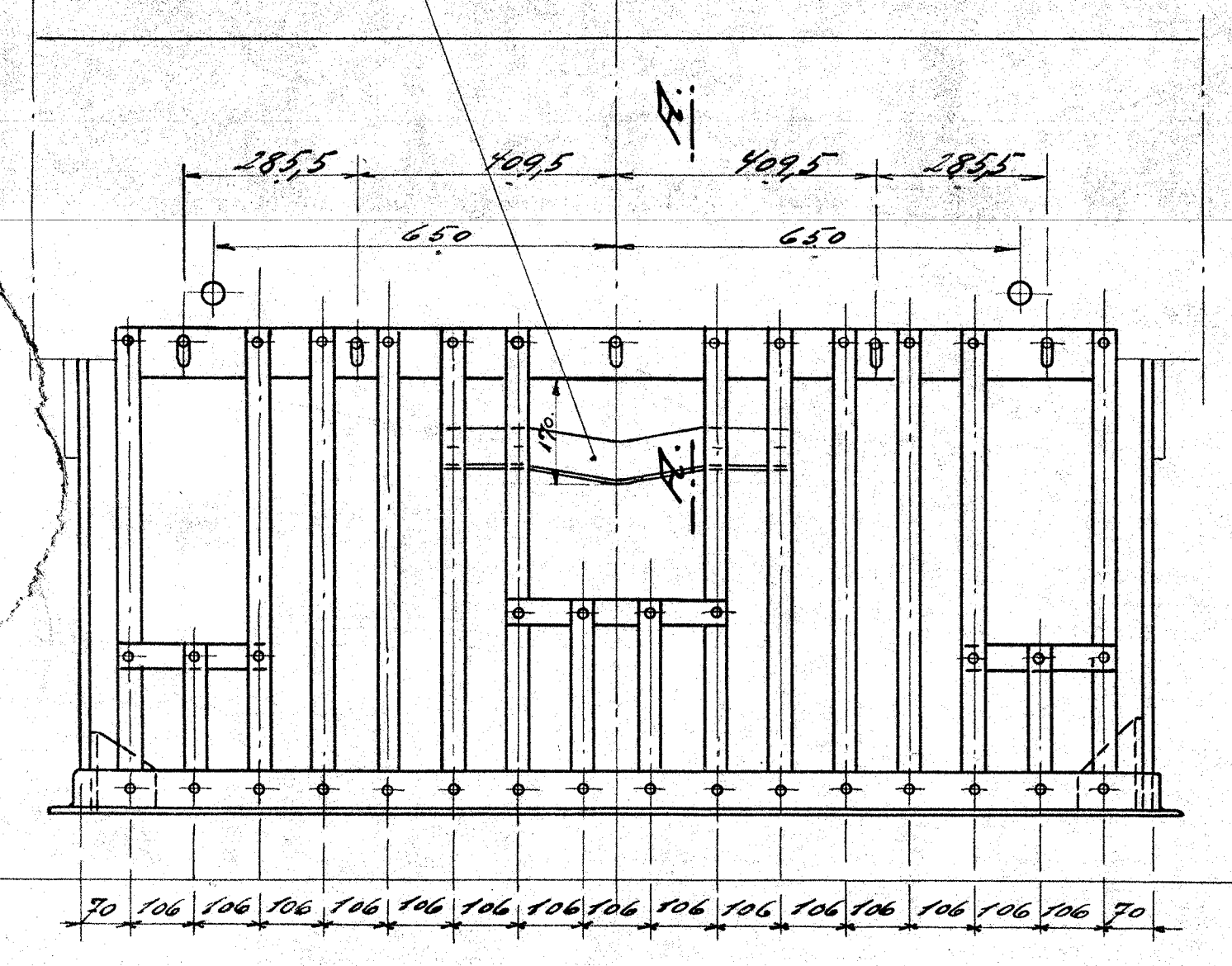
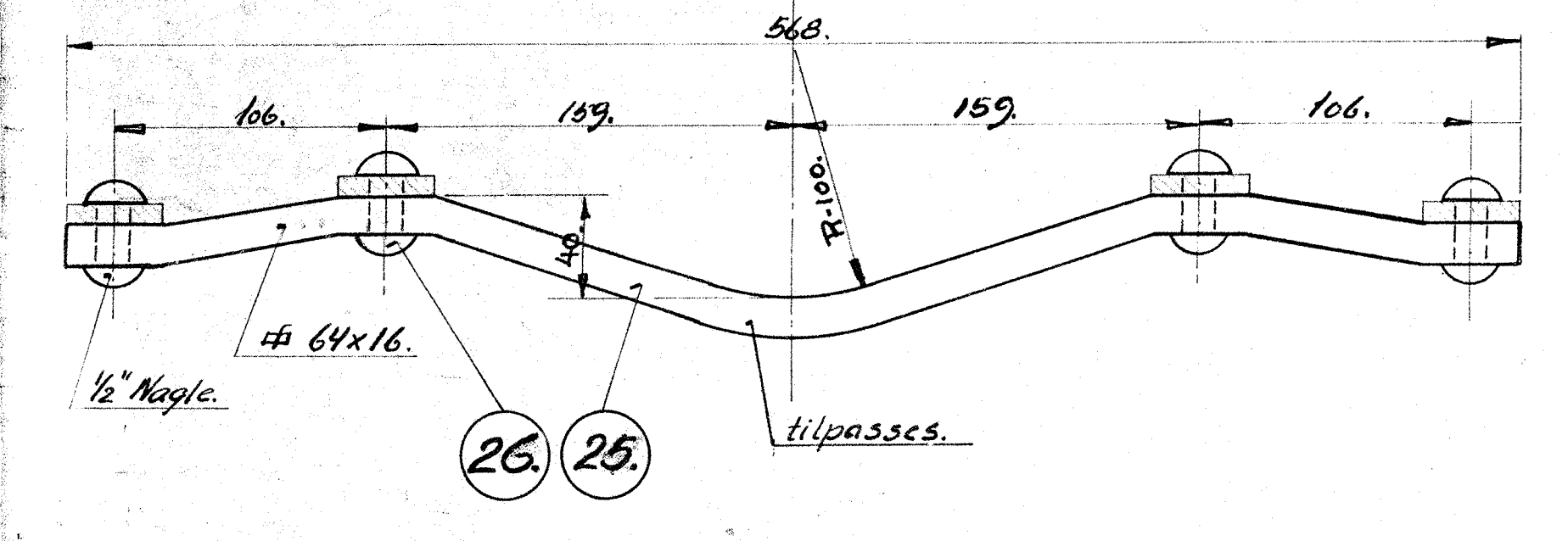
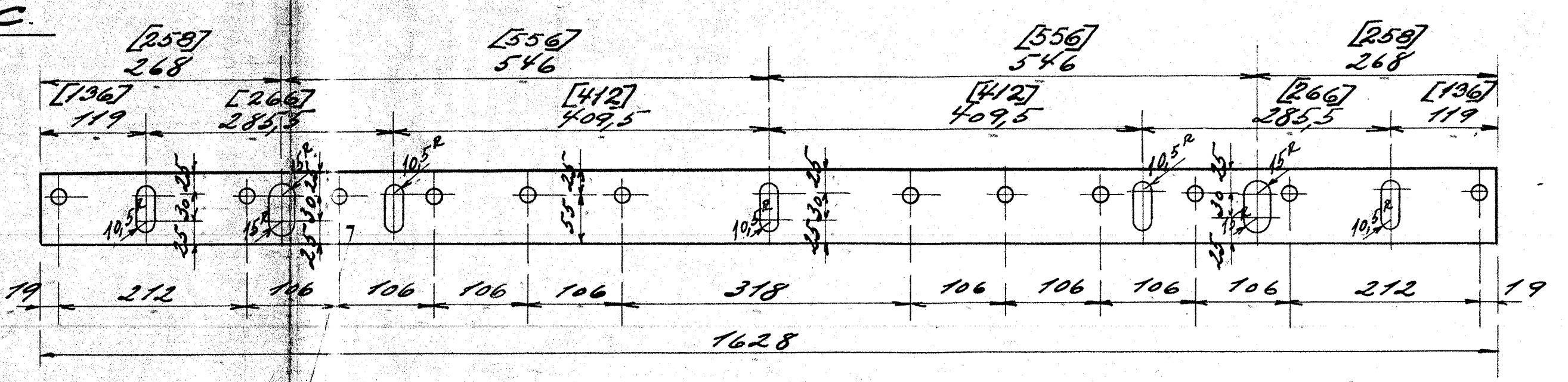
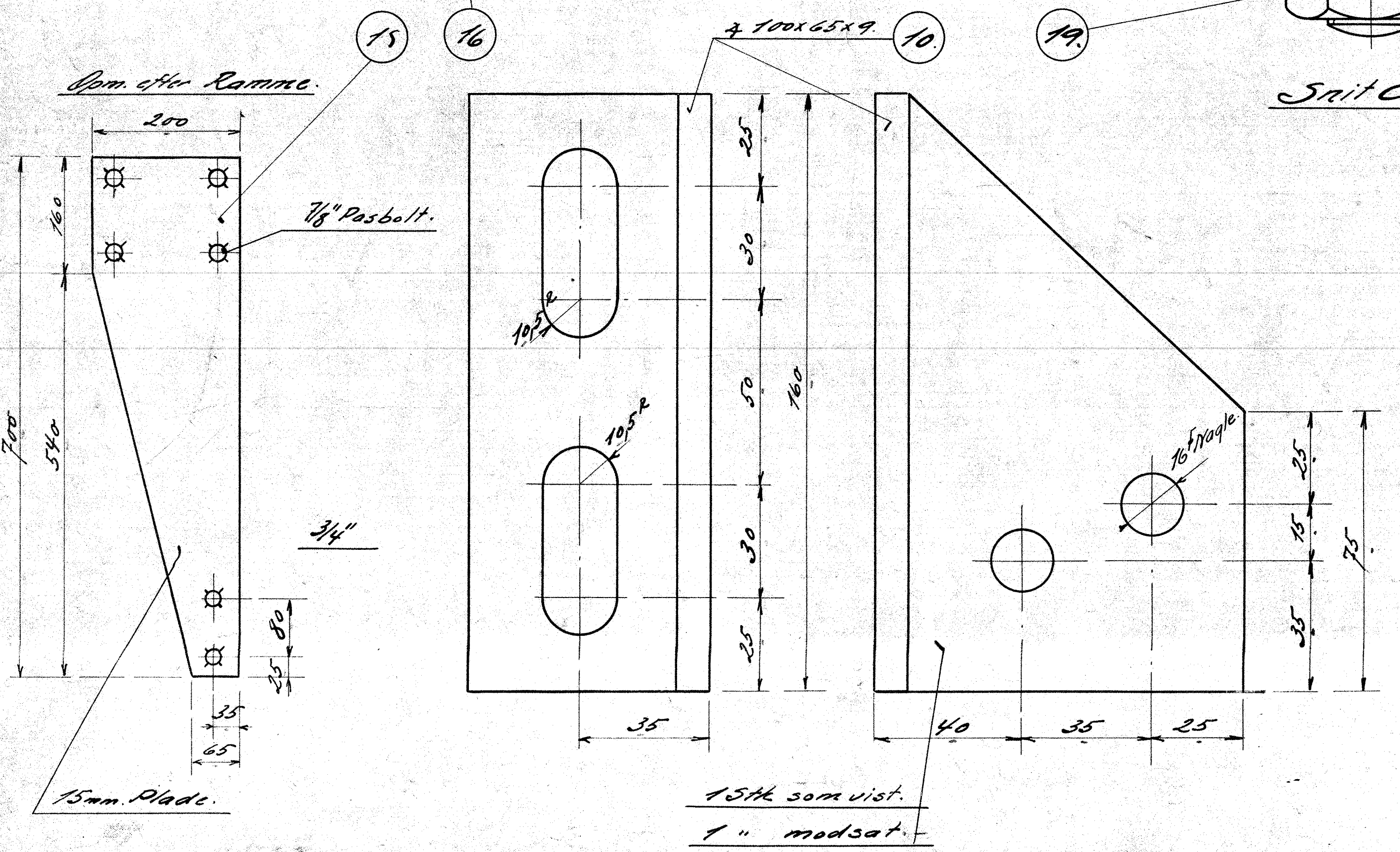
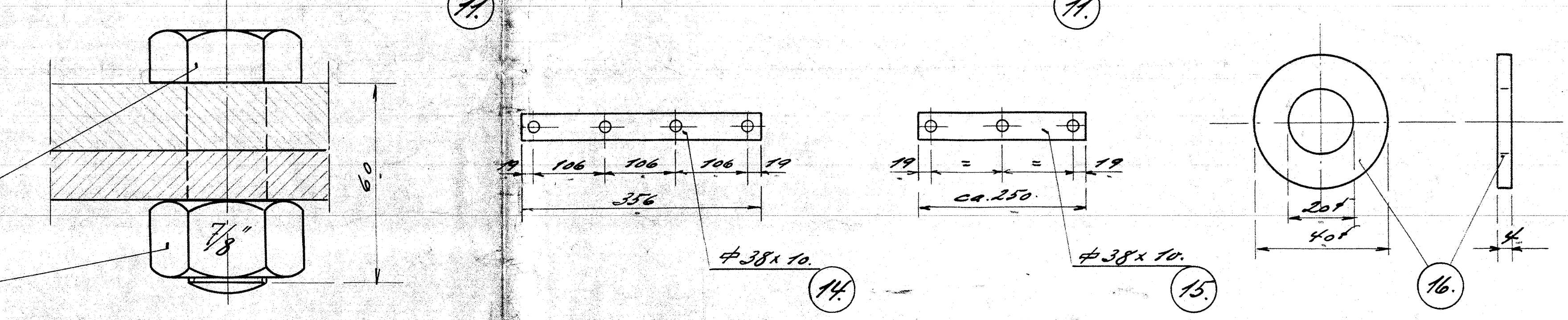
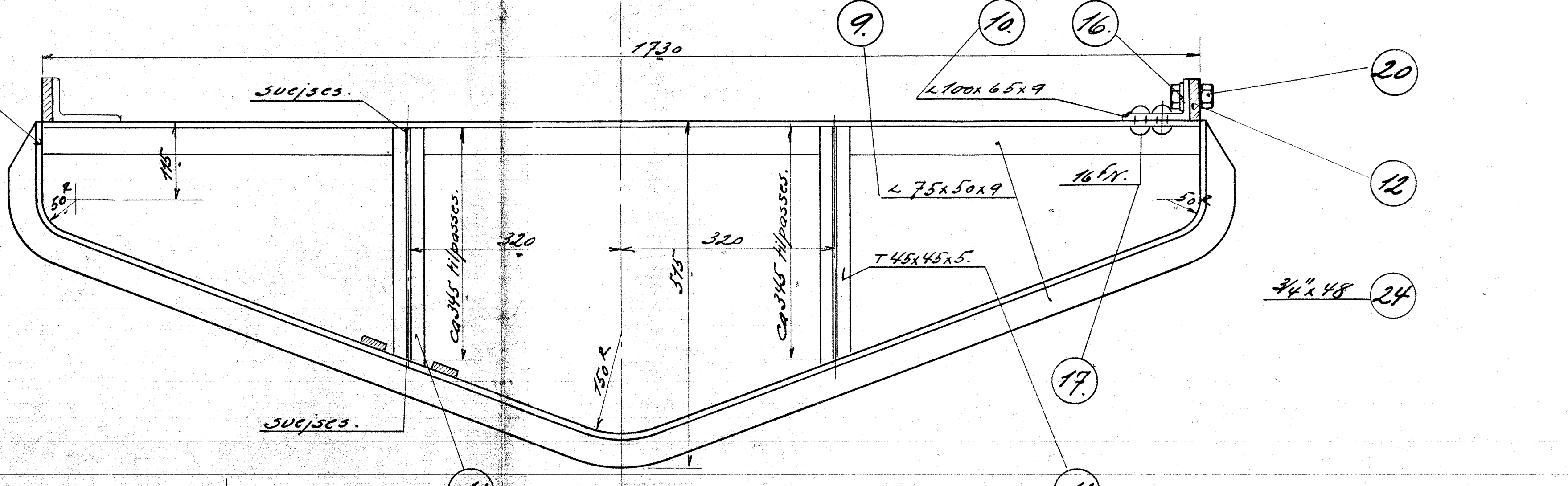
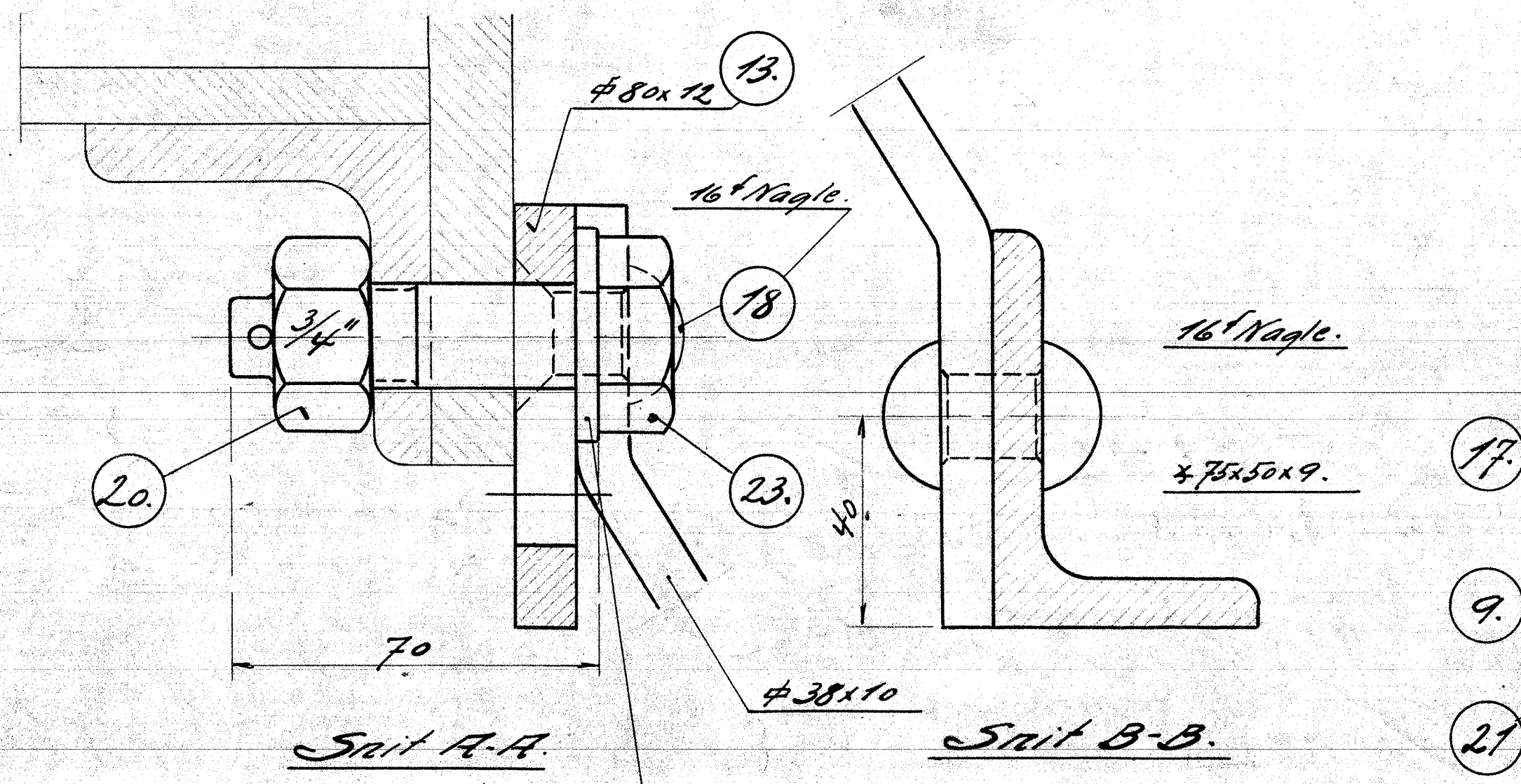
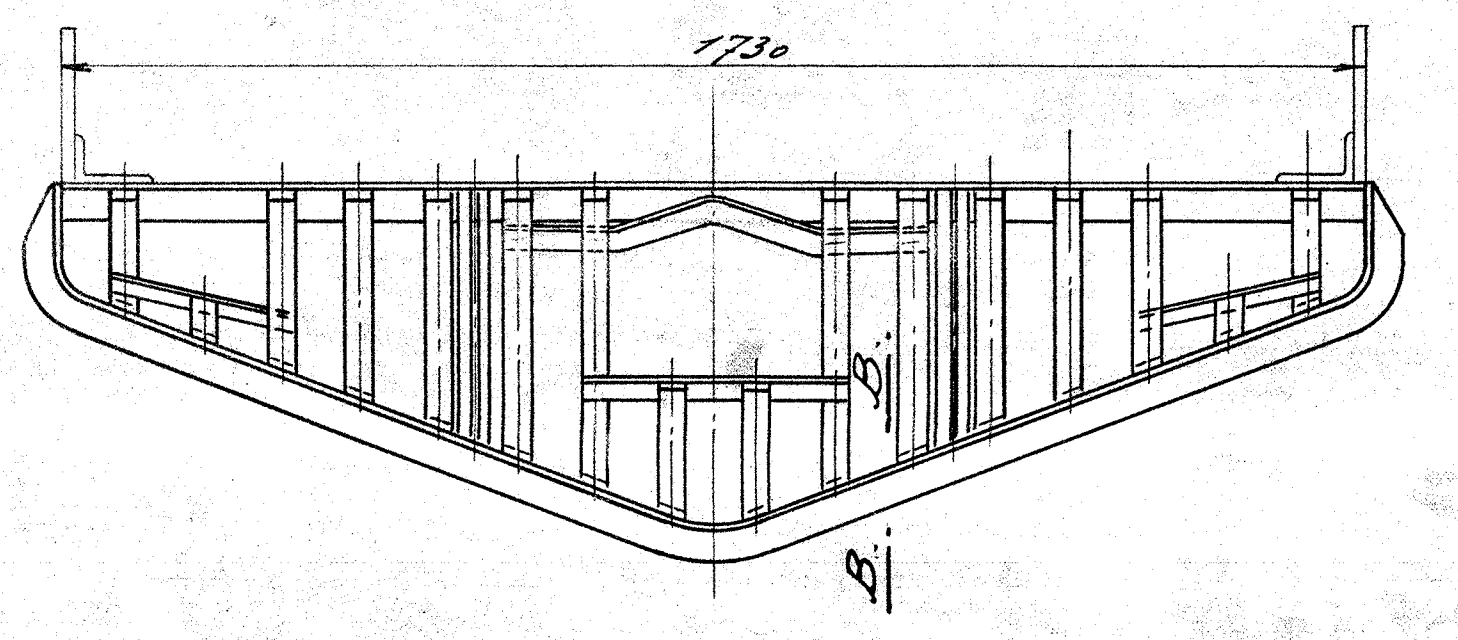


Anslag f. Sikkerhedskobling kun for Ordre Nr. 47020-47200-47777.



REKVISIT		
1	2	Skraastivere Flusj
2	2	do
3	2	do
4	2	do
5	2	do
6	2	do
7	2	do
8	2	do
9	1	Vinkelramme " 270x219
10	2	Vinkelkasse " 270x259
11	2	Stivere " x 330
12	2	Stivere " x 400
13	1	Fladjern Flusj: 705,40
14	1	do " 480,12
15	1	do " 173,55
16	9	Spaendebive " 185,585
17	30	Nagler 16x44 " 178
18	12	do 16x28 " "
19	8	1/2" Nyl. " Flusj: "
20	9	do 3/4" " "
21	5	Split 4x30 " " "
22	8	Bolte 1/2x60 set 1/2x110 8-110
23	5	do 3/4x70 " " 29013
24	4	do 3/4x48 " " 2
25	1	Fladjern 61,16 Flusj: 61x16
26	4	Nagle 13x48 " 590

Skraastivere #38x10. 15th som vist. 15th modsat.



Klammemaal gældende for Ordre Nr. 47030

Kofarager, Diesel-el. 375416 HK. Høvelsø. E.K. Th.S. 1:1, 1:5, 1:10. 117L-9.14. 33-32. 1:10.