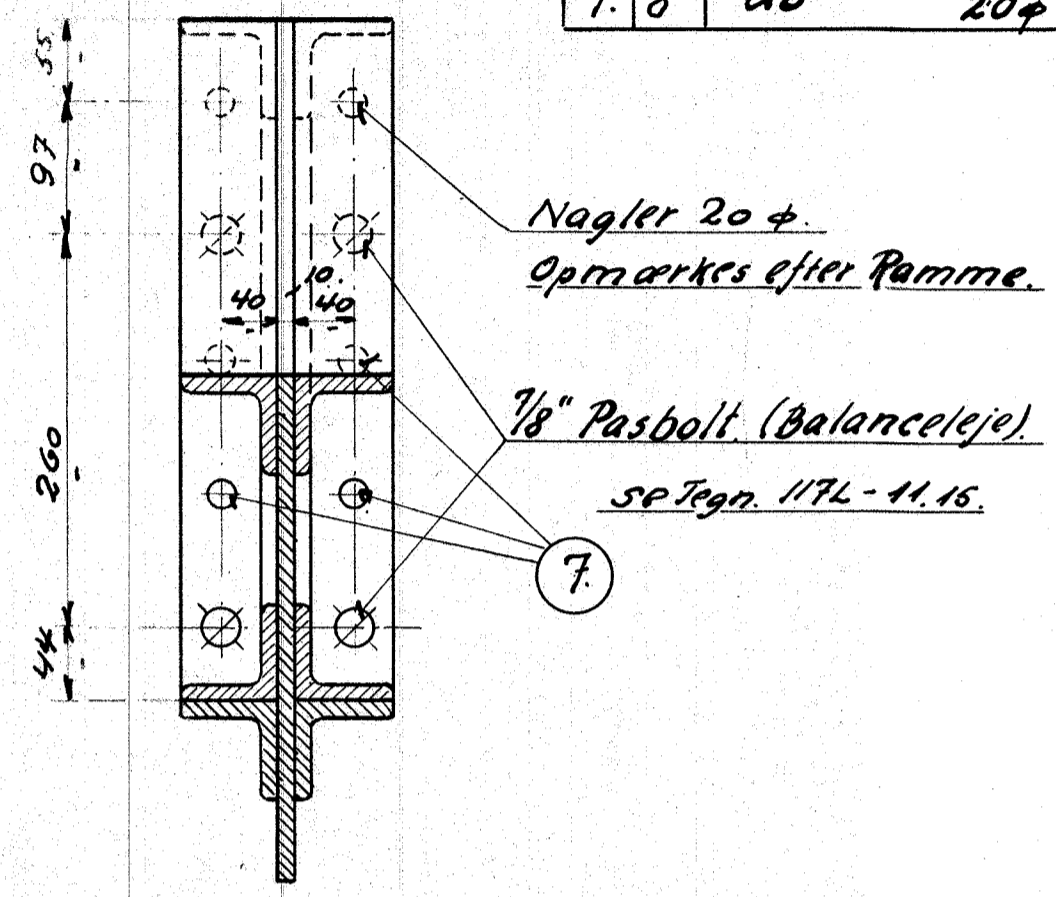
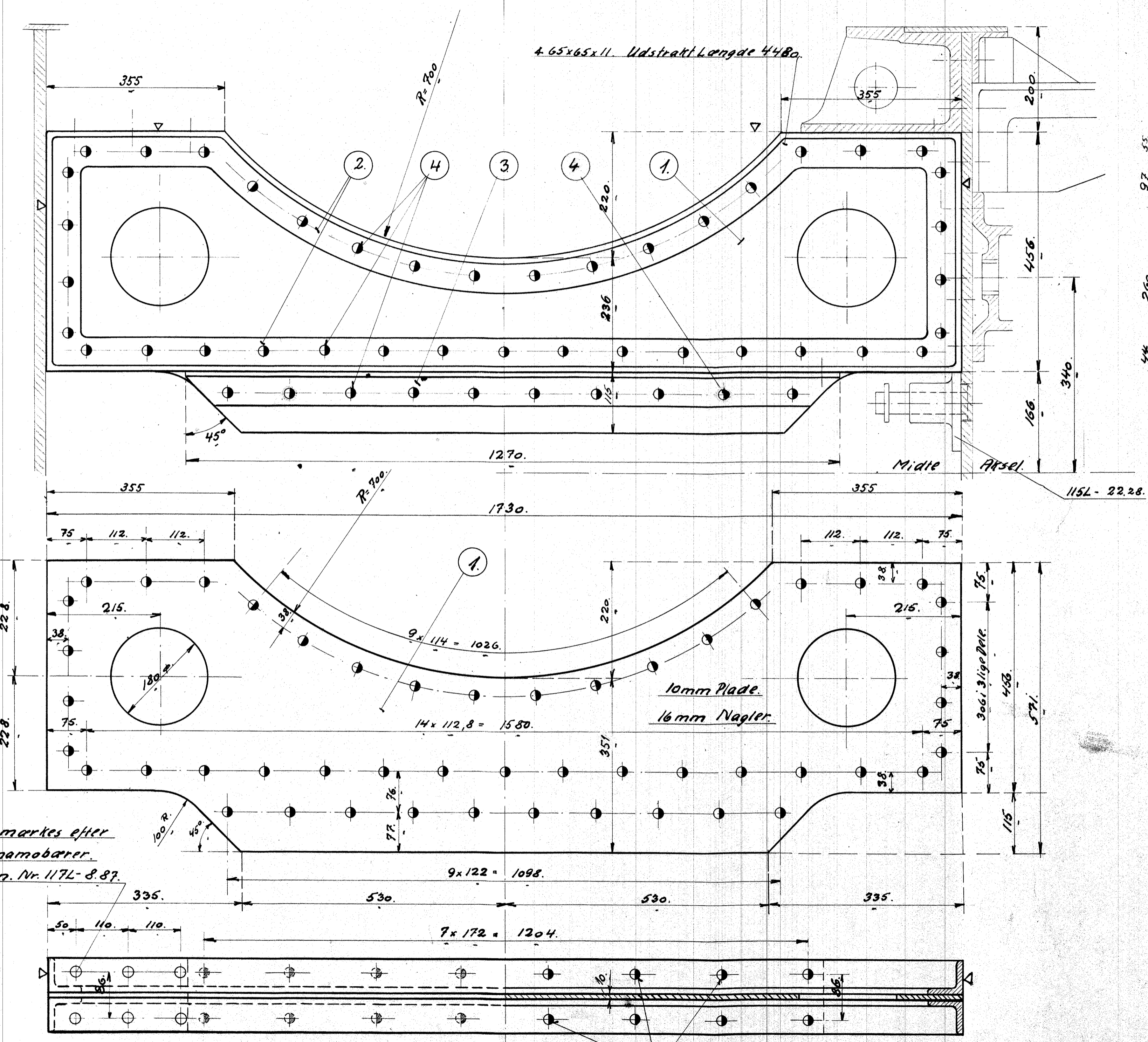


51703.

1	1	Plade.	Fluss/70x60x10
2	2	Vinkelramme	--- 4.65x65x11x920
3	2	Lige Vinkel. 1270lg.	" "x"x"2560.
4	49	Nagle 16φx58.	Nittej. Best.
5	---	φx48	" "
6	16	do.	" x 46
7	8	do	20φx60



FRICHS AARHUS

Rammelvarforbindelse under Dyn.
Diesel-el. 375 HK Motorloko.

Stahl.		
1:5.	117L-8.10.	
29.2.32		