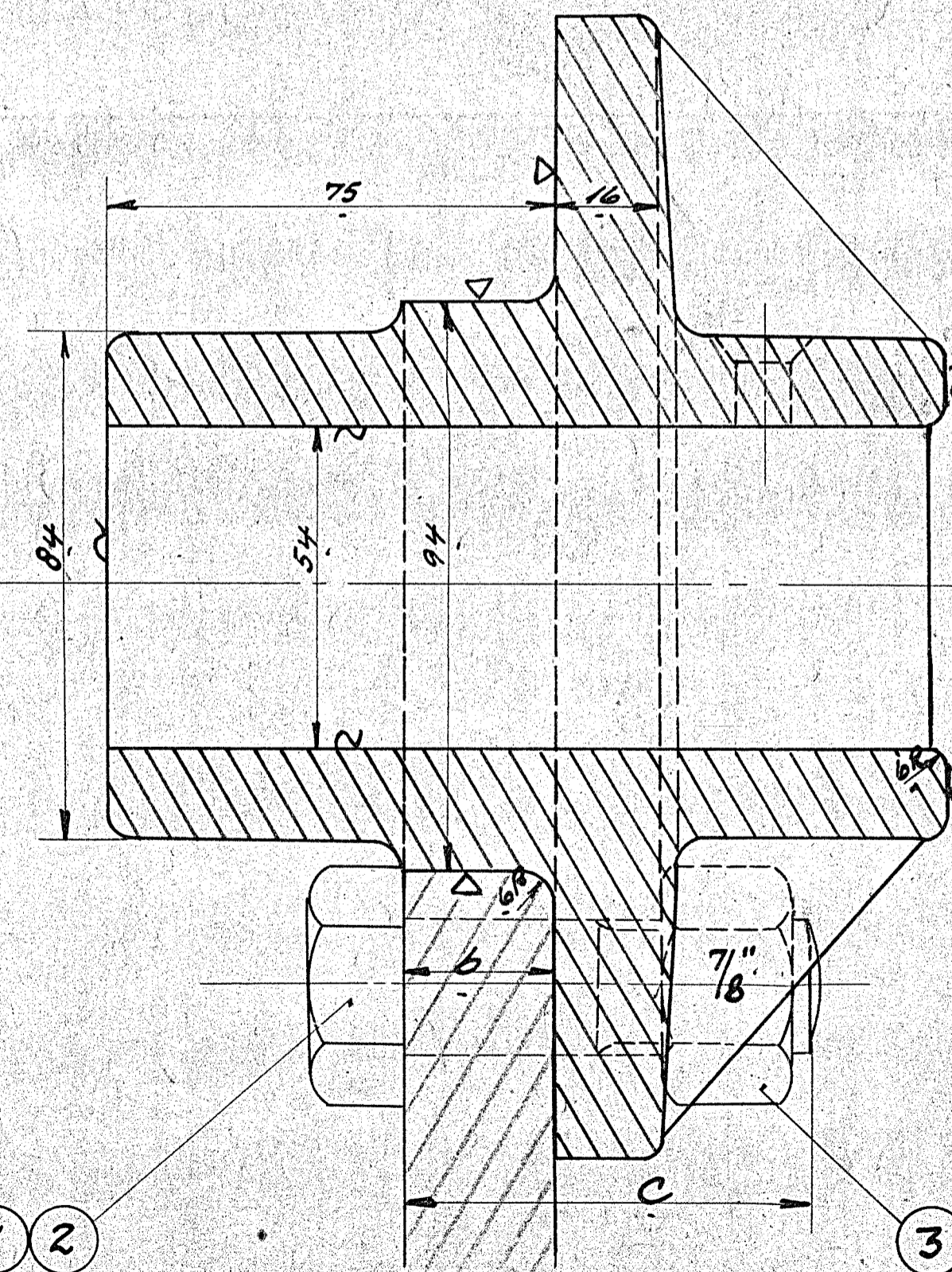
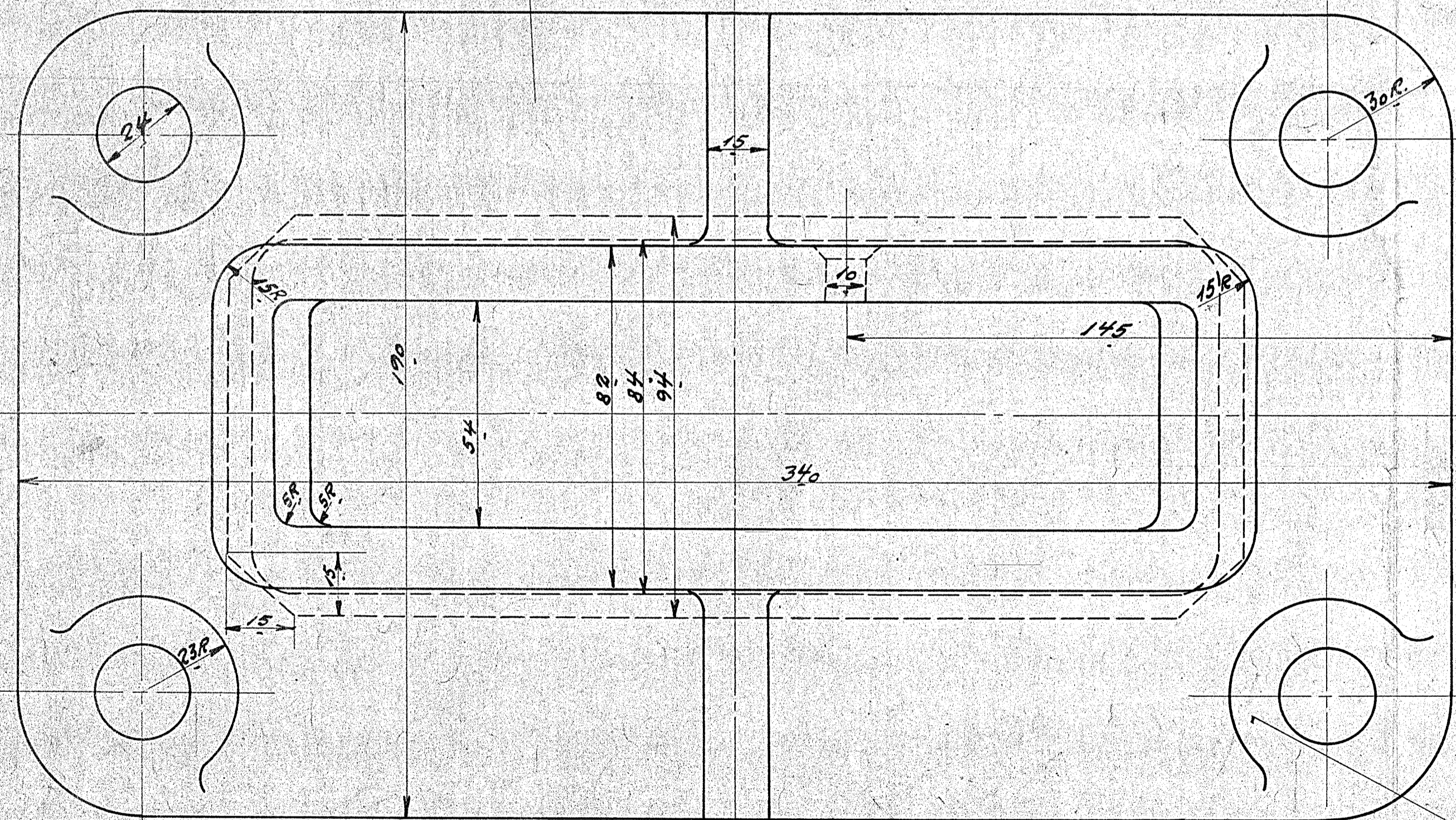


a	b	c	Ordre No
1500	25	66	39700
800	15	56	46900
736	"	"	47020
"	"	"	47200
690	"	"	47147
800	"	"	50000
784	15	56	50555
566	"	"	53100
690	"	"	56210
620	"	"	56200
"	"	"	57650

51452

1	2	Trakkrogsfjoring	Staal	150
2	8	Bolt 7/8" Teg. L. 29. 9155K1	M.K.	
3	8	Motrik 7/8"	Fuss	Best.



*Fjoring for Trakkrog*  
*Diesel-el. 300H. Motorloko.*

R.T.		
10/2 1934	1:1	1154-10.20