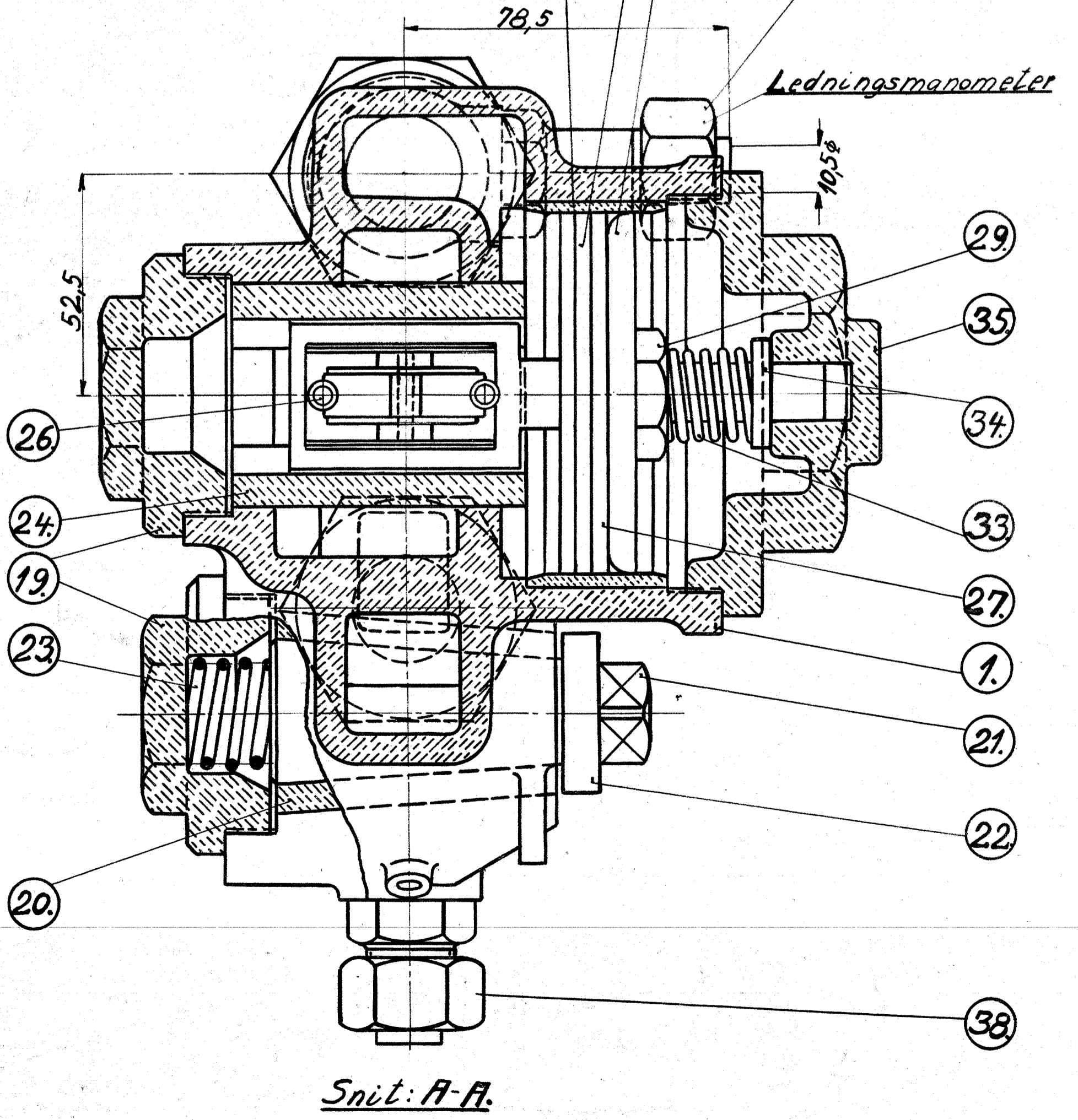
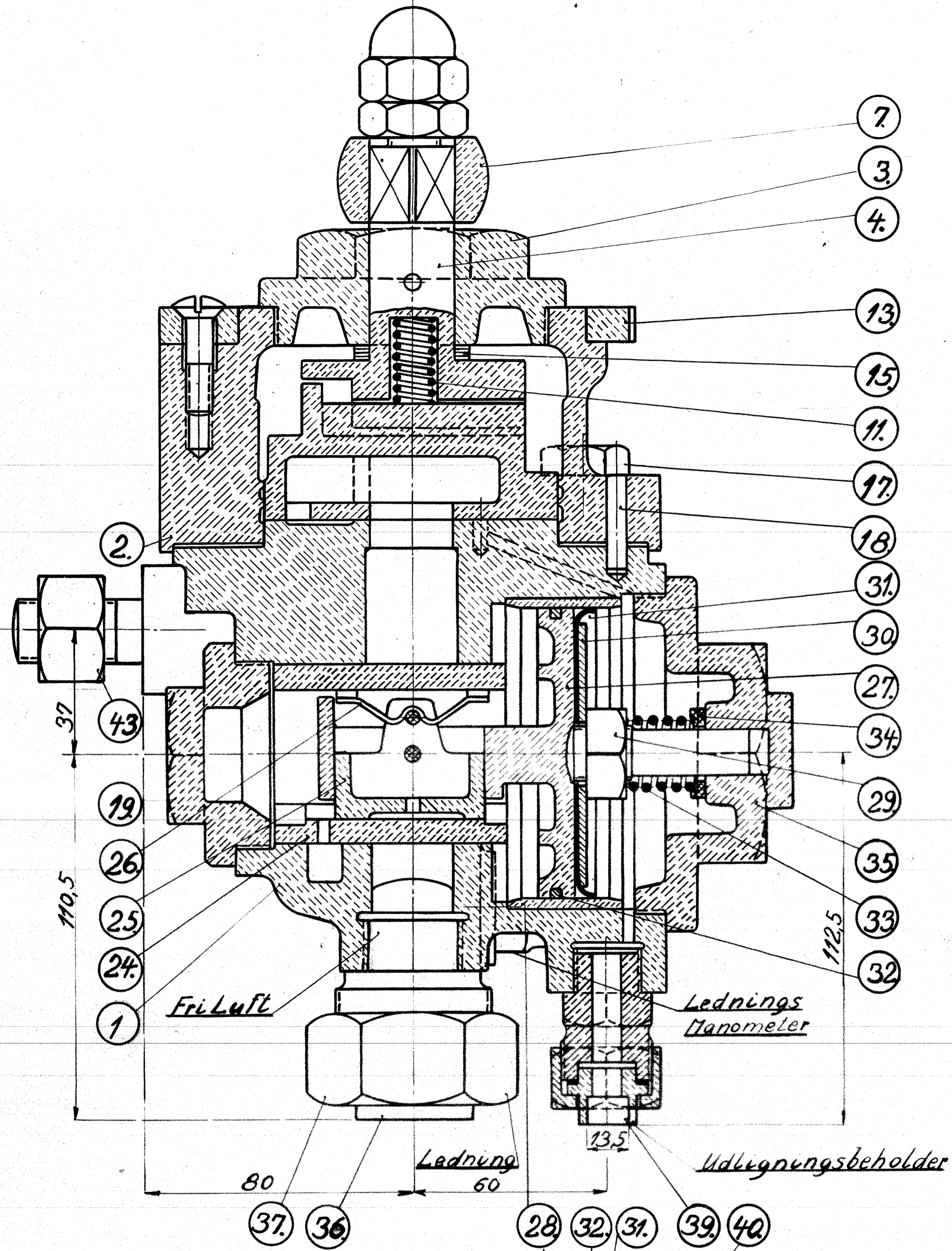


- I. Fyld- og Løsestilling
- II. Kørestilling
- III. Midtstilling
- IV. Afslutningsstilling
- V. Driftsbremsestilling
- VI. Hurtigbremsestilling



4-0411 a-b og c

1	1	Ventilhus	Købes
2	1	Overdel f. Ventil	---
3	1	Dæksel f. ---	---
4	1	Gliderspindel	---
5	1	Møttrik	---
6	1	Lukket Møttrik	---
7	1	Styr f. Pæler m.m.	---
8	1	Haandtag	---
9	1	Stoppestift	---
10	1	Fjeder f. do	---
11	2	do	---
12	1	Stoppepal	---
13	1	Anslagskive	---
14	4	Skrue f. do	---
15	1	Læderpakning	---
16	1	Drejeglider	---
17	4	Skrue 1/2" x 40	---
18	1	Styresluft	---
19	2	Dæksel f. Hane og Gl.	---
20	1	Foring f. Hane	---
21	1	Hanetold	---
22	1	Anslagskive	---
23	1	Hanefjeder	---
24	1	Gliderforing	---
25	1	Glider	---
26	1	Fjeder for do	---
27	1	Stempel	---
28	1	Cylinderforing	---
29	1	Møttrik	---
30	1	Plade	---
31	1	Lædermansket	---
32	1	Stempeling	---
33	1	Fjeder	---
34	1	Fjederkive	---
35	1	Cylinderdæksel	---
36	2	Studs	---
37	2	Omløber	---
38	1	Forskruing (kompl)	---
39	1	---	---
40	1	---	---
41	1	Luftskruer	---
42	1	Prop	---
43	2	3/4" Tap m. Møttrik	---
44	2	1/2" " " "	---
45	1	Kompl. Trykregulator	---

(høje Bremsning)

Knorr Tegn Nr. 23627a
 (Med aflæglig Haandtag og
 Trykregulator, Drejegliderventil)

A/S FRICHS AARHUS

Trykluft-Førerbremsventil Nr. 2
 Dieselelekt. 420 H.K. Motorloko 1302

M.B.	Gr. 22
15-11-28	1:1 106L-432.

Mw