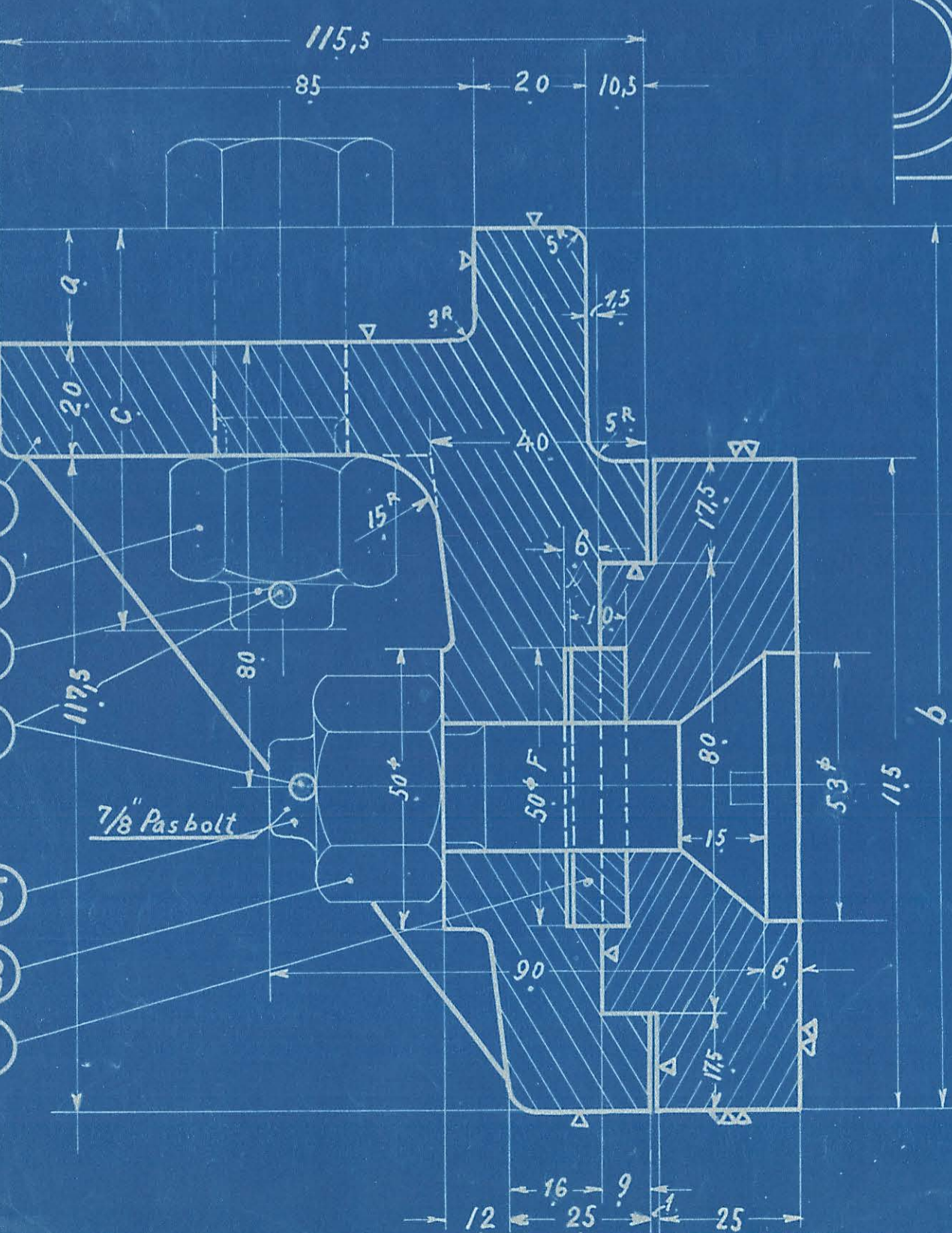
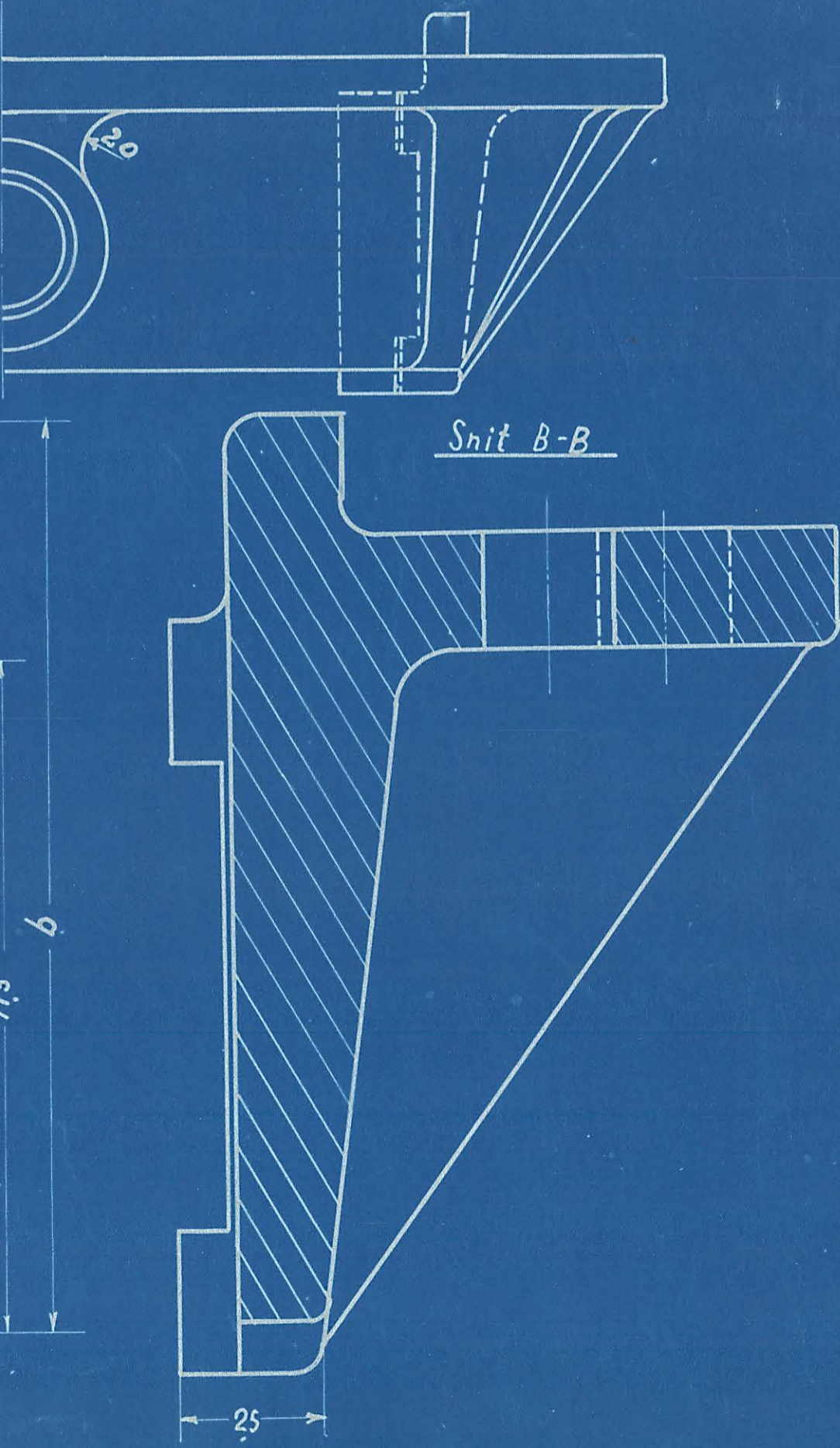


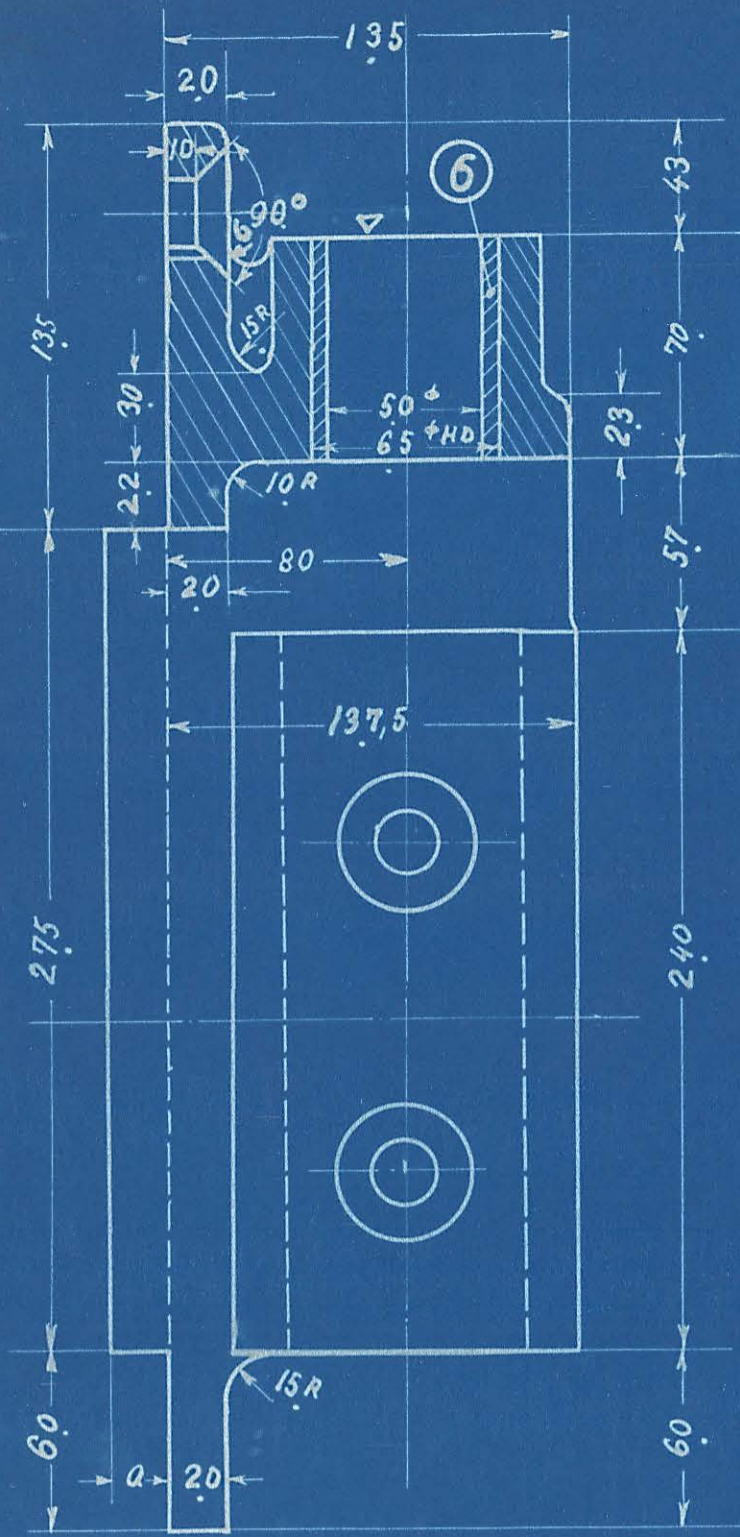
Snit A-A



Snit B-B

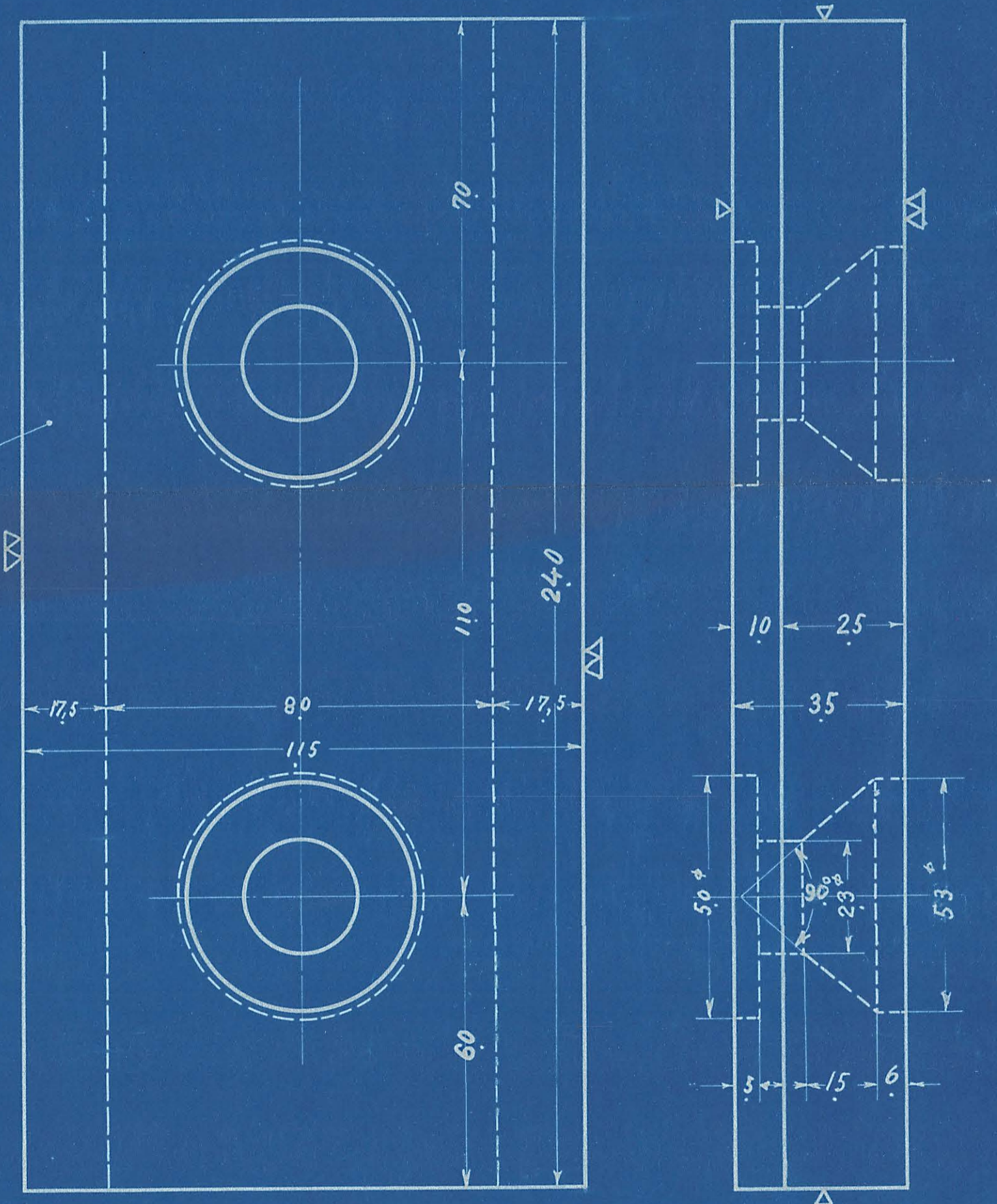


STYK TALE	STYKLISTE NR 51415		INDERS TIL STYKLISTE NR.		
	GENSTAND	MÆTTE	MATERIALE	MODEL	VALGT
2	Aksselkasseføring	1	Staal	10GL ¹²⁷	
4	Mellemlæg	2	Støbej	19 ⁷ / ₂	
8	Styreskive	3	Flussj	52 ⁴ / ₁₃₀	
32	Bolt seTegn	L-29.941	Stkl.	Mrk	
8	-"-	L-29.948	-"-	Mrk	
2	Bøsning	L-29.24	-"-	-"-	
4	Bolt	L-29.948	-"-	-"-	
44	Motrik	7/8"	8	Flussj	Best
44	Split	5 ⁺ x35	9	u	Magasib



a	b	c	Ordre Nr.
20	157,5	73	46900
20	157,5	73	47200
20	157,5	73	47020
14	151,5	67	47030
18	155,5	71	47147
20	157,5	73	47777
20	157,5	73	50060
20	157,5	73	50555
20	157,5	73	51444
20	157,5	73	53100
20	157,5	73	53222
18	155,5	71	56210
20	157,5	73	56200

2



KOPMAGASIN
Krist. Frichs & forl. 20/10 1922

FRICHS AARHUS

Aksselkasseføring.

Diesel-el 300 HK Motorloko.

MASTAL 1:1
 MAJ 1922
 DATO
 TEGNERENS NED. 115 L-12.32
 BRUKS NED.