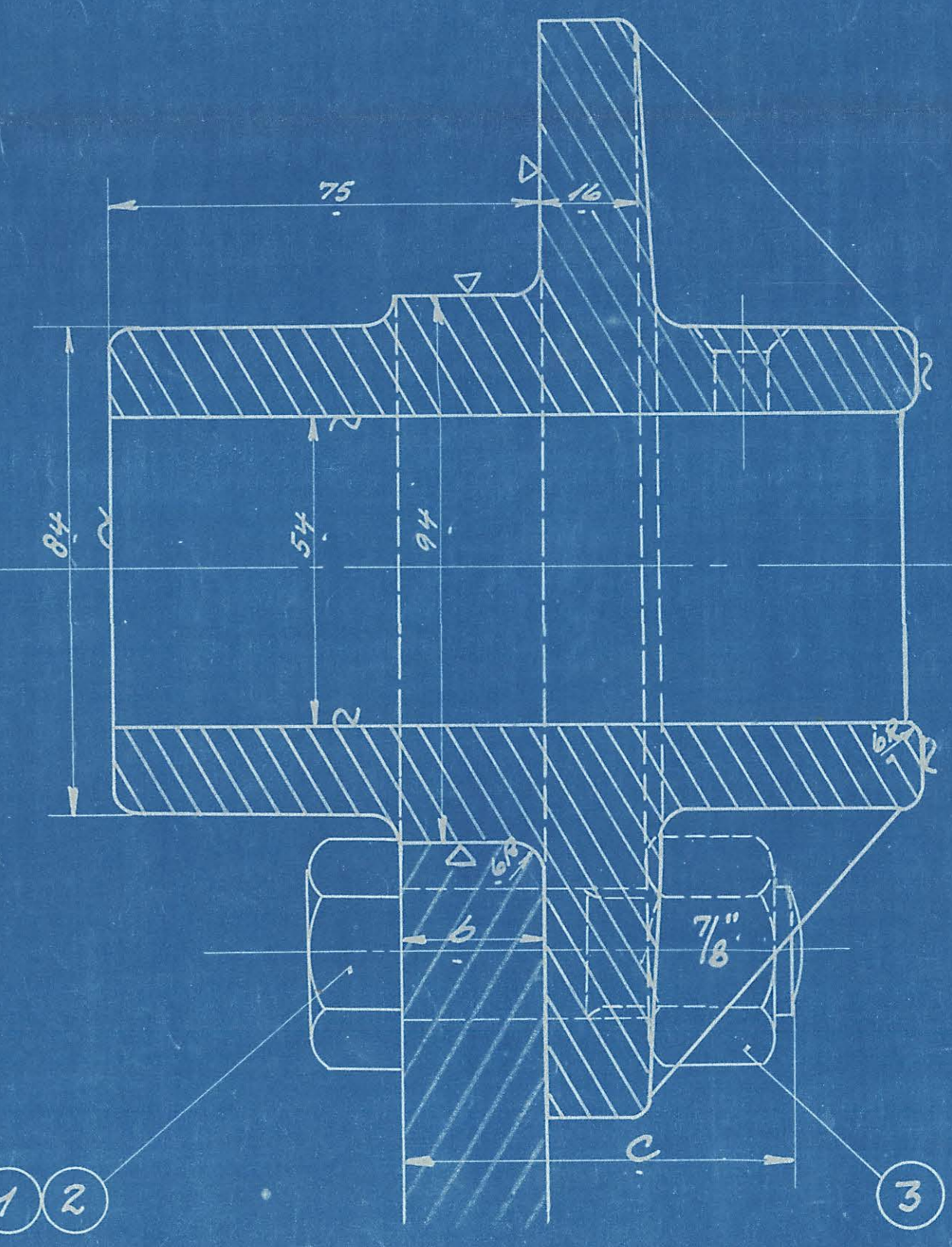
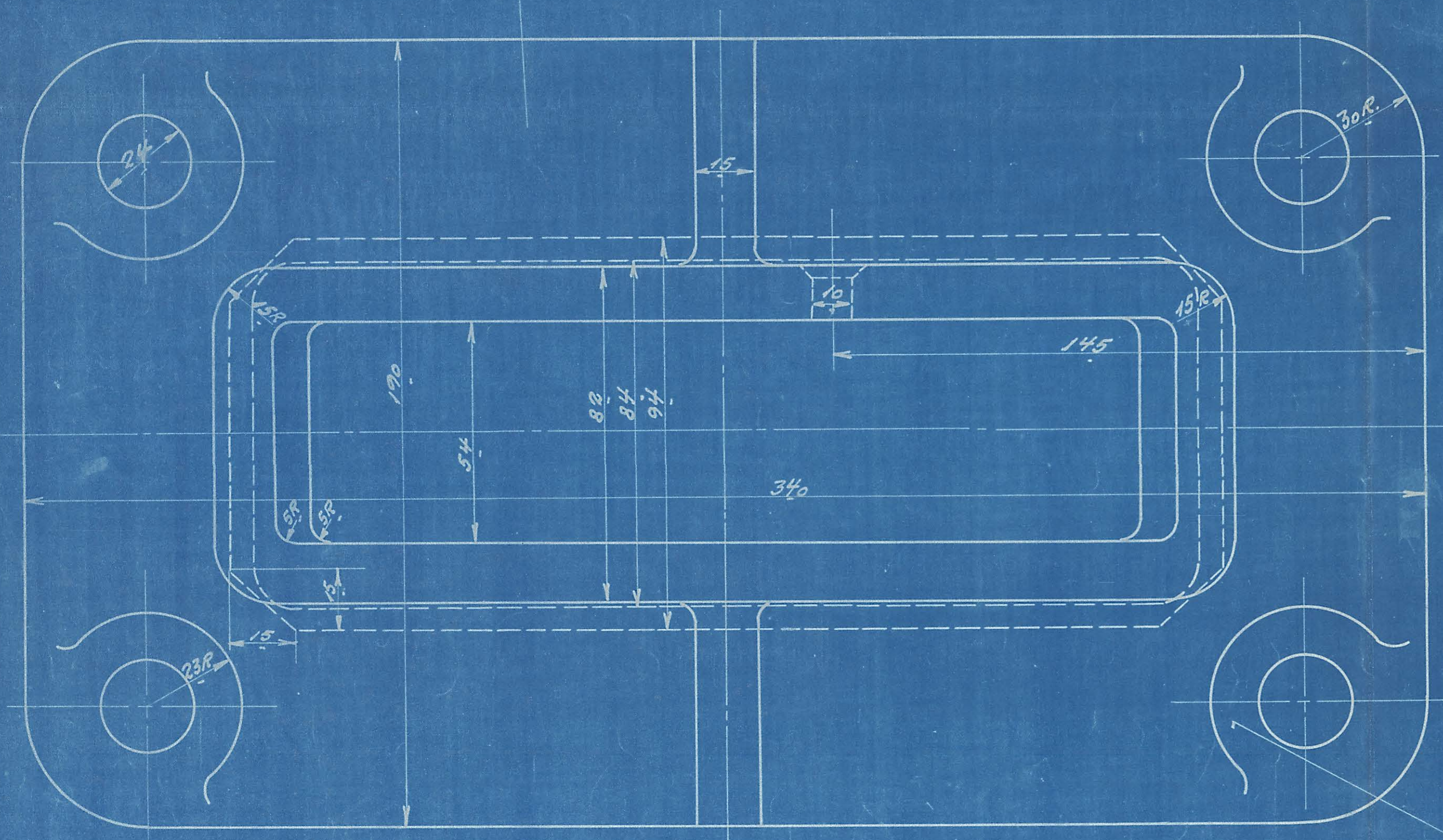


a	b	c	Ordre №
1500	25	66	39700
800	15	56	46900
736	"	"	47020
"	"	"	47200
690	"	"	47147
800	"	"	50000
784	15	56	50555
566	"	"	53100
690	"	"	56210
620	"	"	56200
"	"	"	57650

51452

1	2	Trækrogspring	5200	100L 15
2	8	Bolt 7/8" L. 29.9455Hl.		M. 15
3	8	Møtrik 7/8"	Fluss	Best.



1 2 3

Føring for Trækrog.
 Diesel-el. 300H. Motor/akro.

R.T.		
19/12/1931	1:1	115L-10.20.