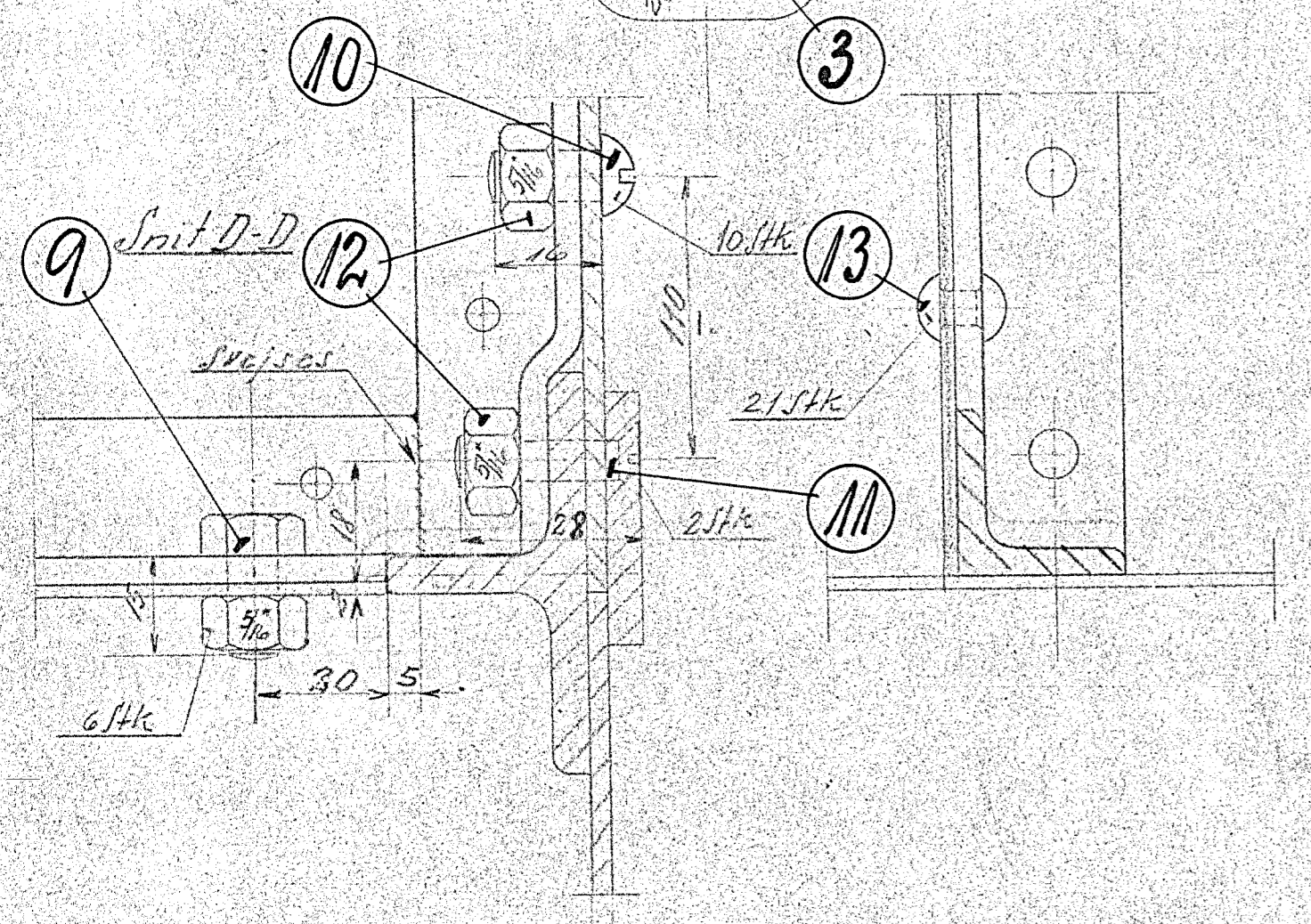
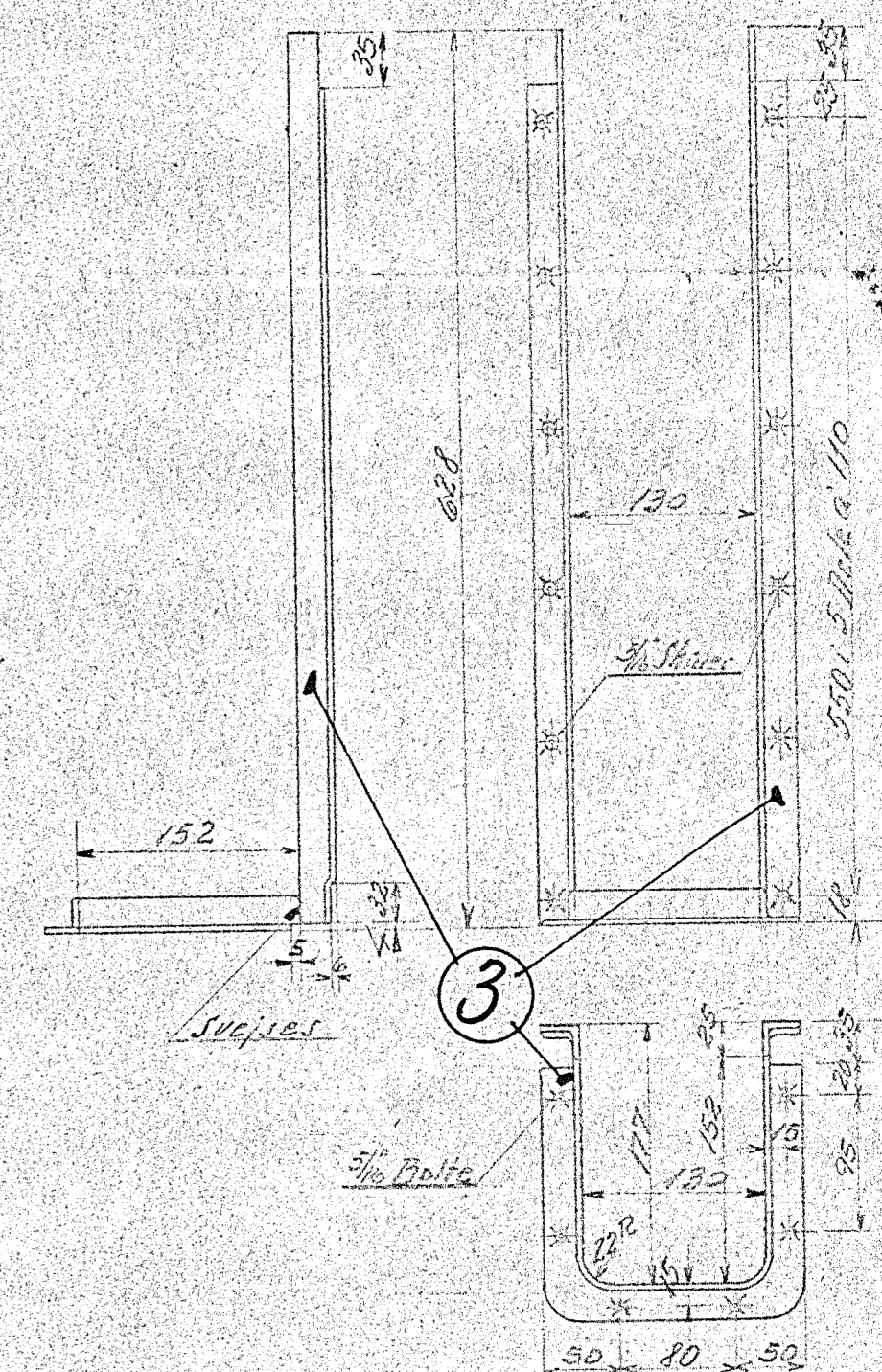
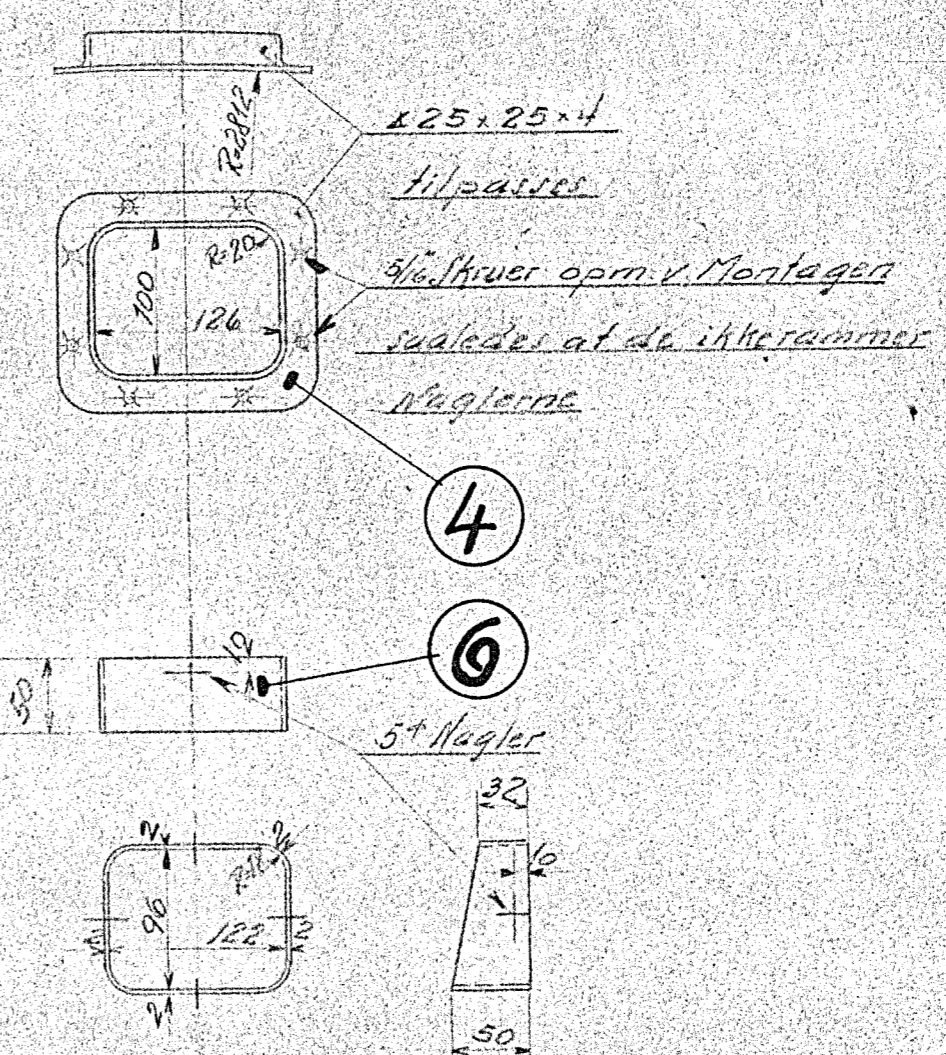
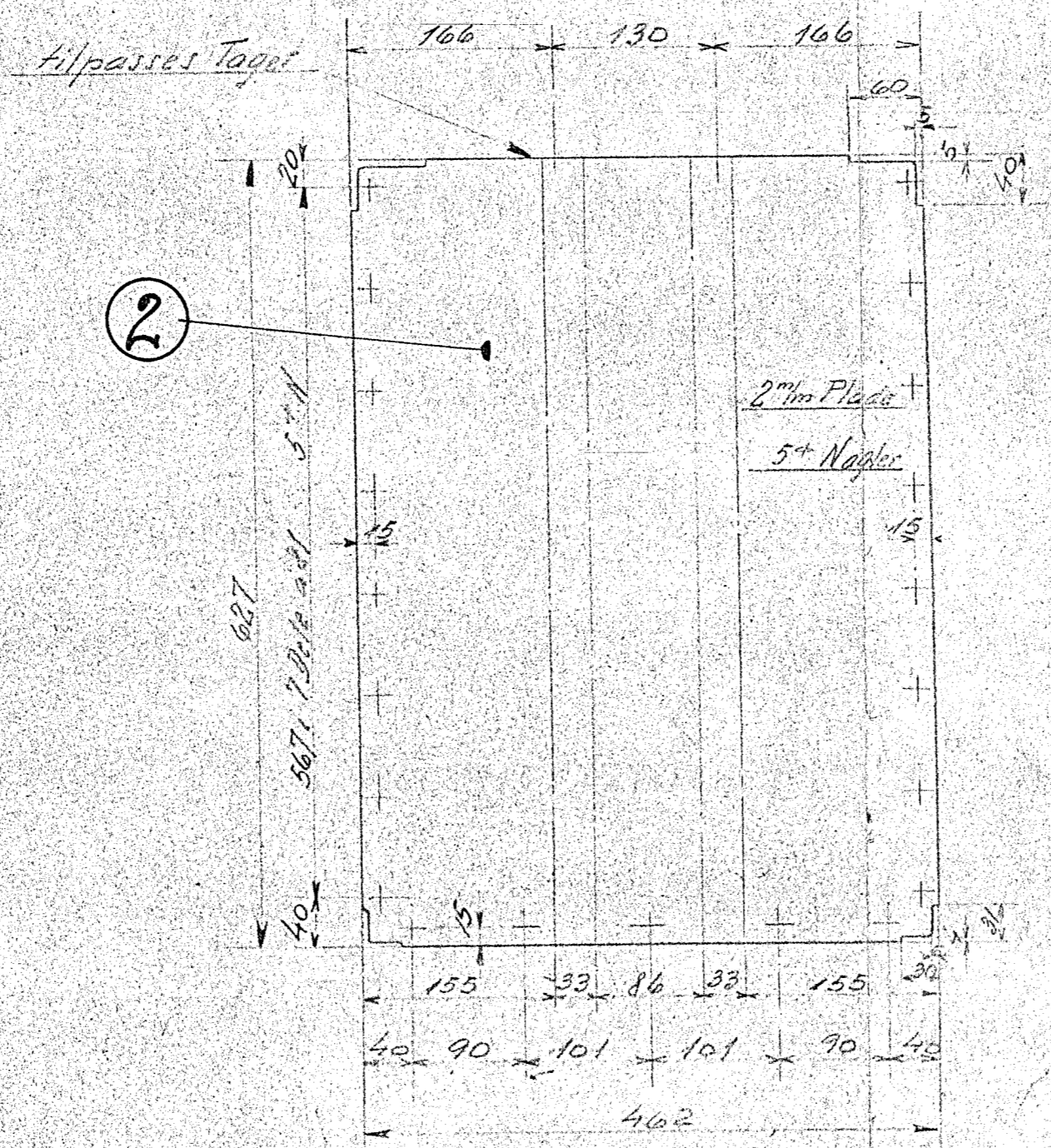
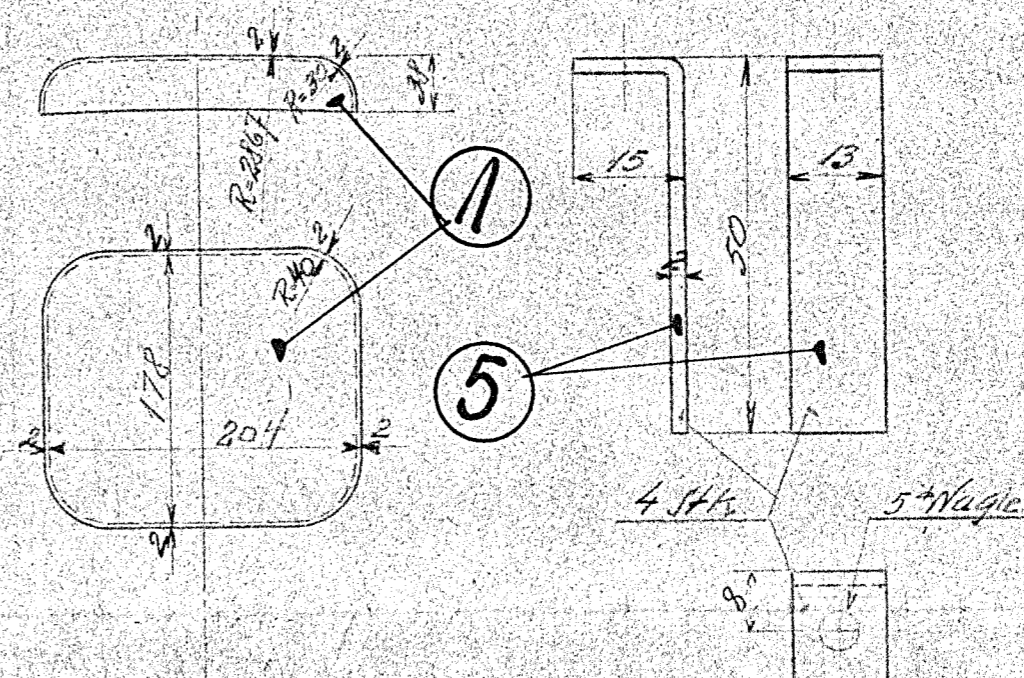
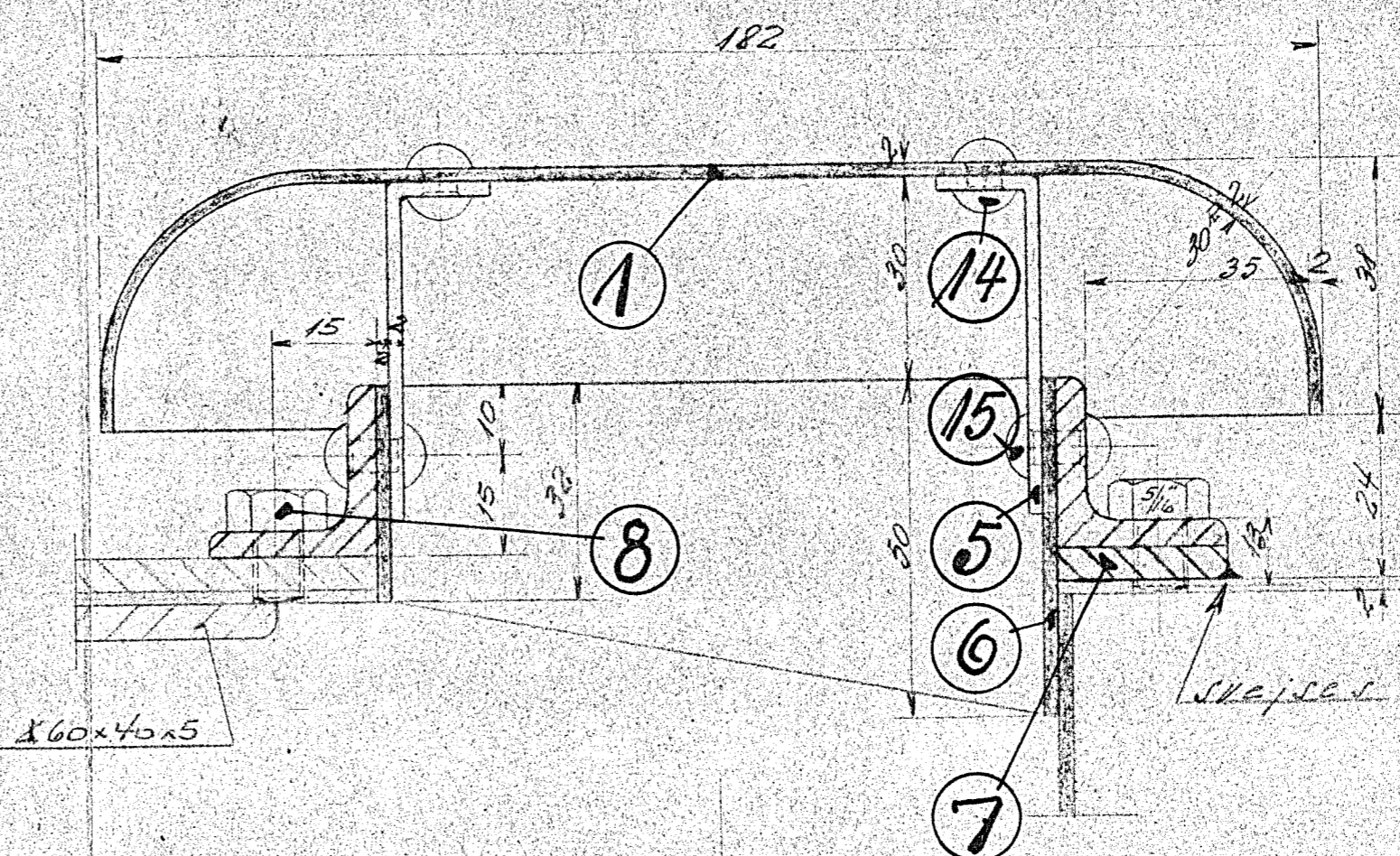
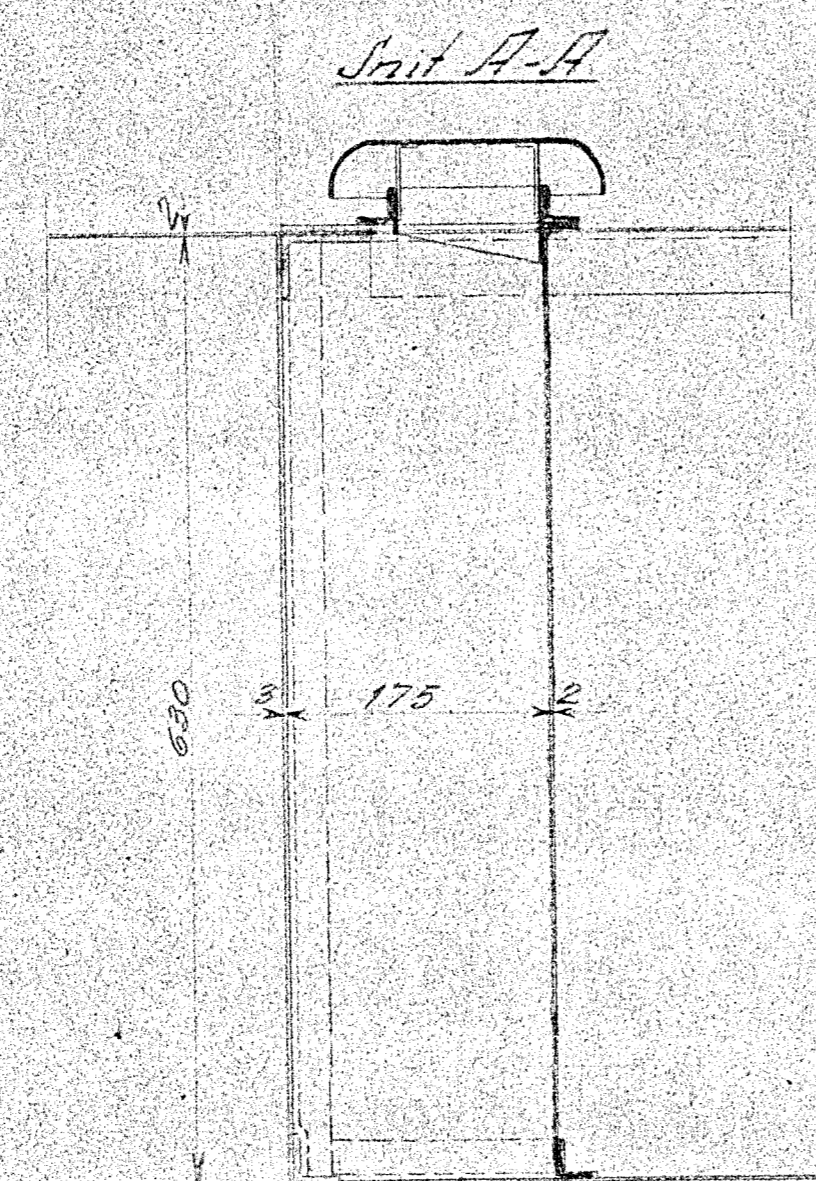
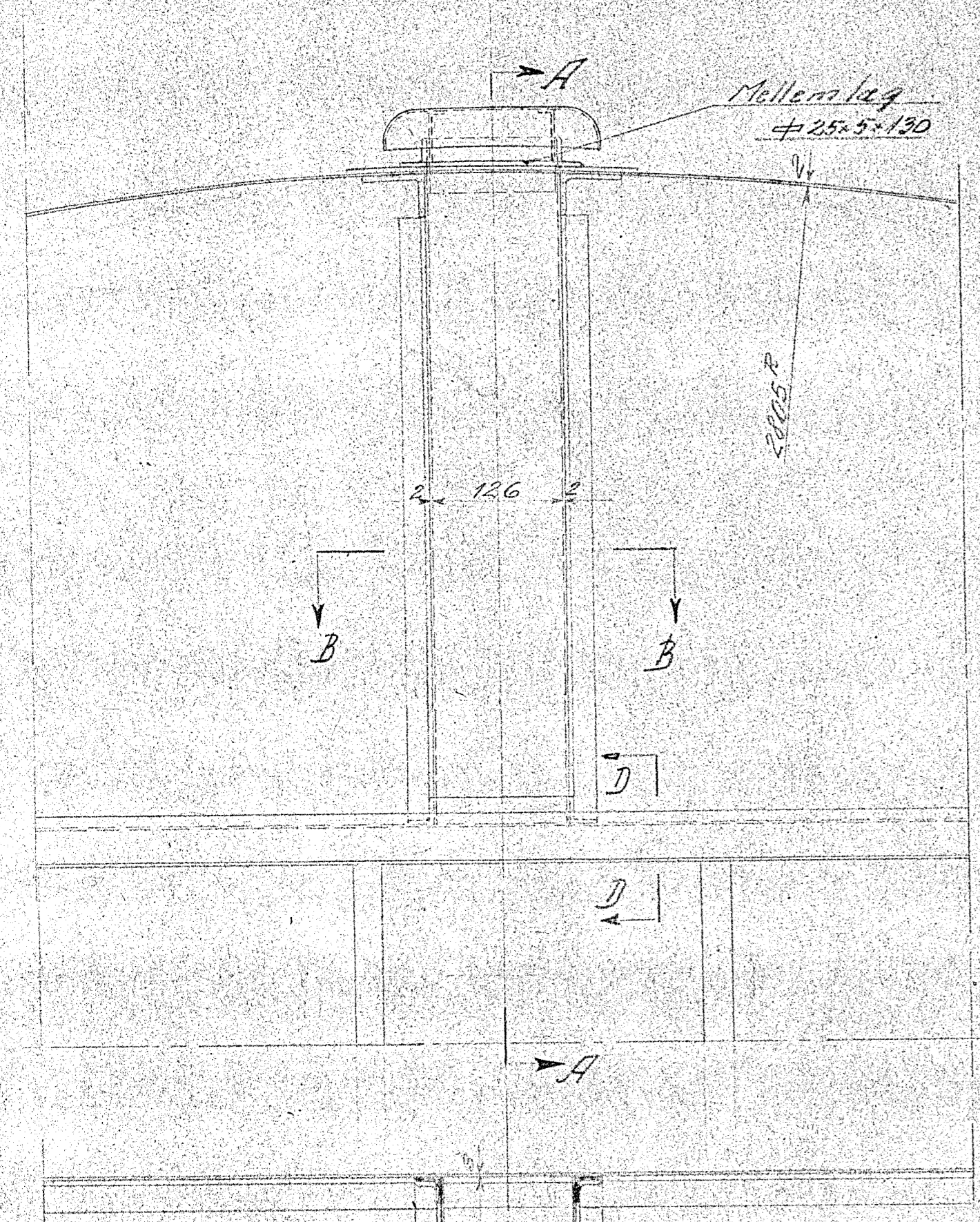


61315

Part	Quantity	Material	Notes
1 Hatte	1	Fuges 250	
1 Sideplade	2	" 480x2	
1 Vinkelramme	3	" A 25x25x4	
1 " "	4	" 700	
4 Holder for Hatte	5	" 13.5x280	
1 Pladeramme	6	" Affald	
1 Møllemlag	7	" 25.5x140	
8 Sort Jern 5/16" x 13	8	" Mag.	
6 " Bolt " 1/2" x 1.5	9	" "	
10 Skruer 5/16" x 16	10	" "	
2 " " x 28	11	" "	
12 Matrix 5/16"	12	" "	
21 Nagler 5/16" x 14	13	" Nitteren "	
4 " " x 12	14	" "	
4 " " x 16	15	" "	



FORBØJNINGER

A/S FRICH'S ARBEJDS

1:5 A.T.

1:1 3-3-36

Afluftning af Batteristab

Direkt. a. 275/300Hr. Motorloka

146-26-85