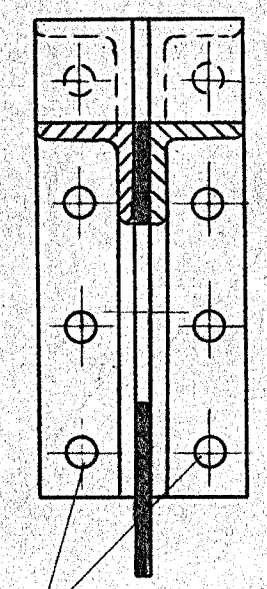
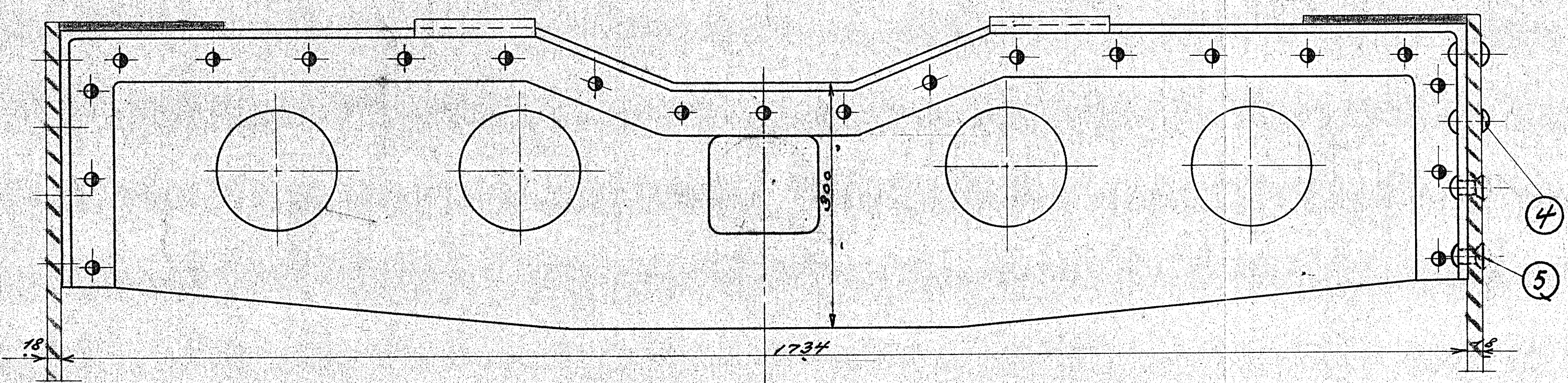
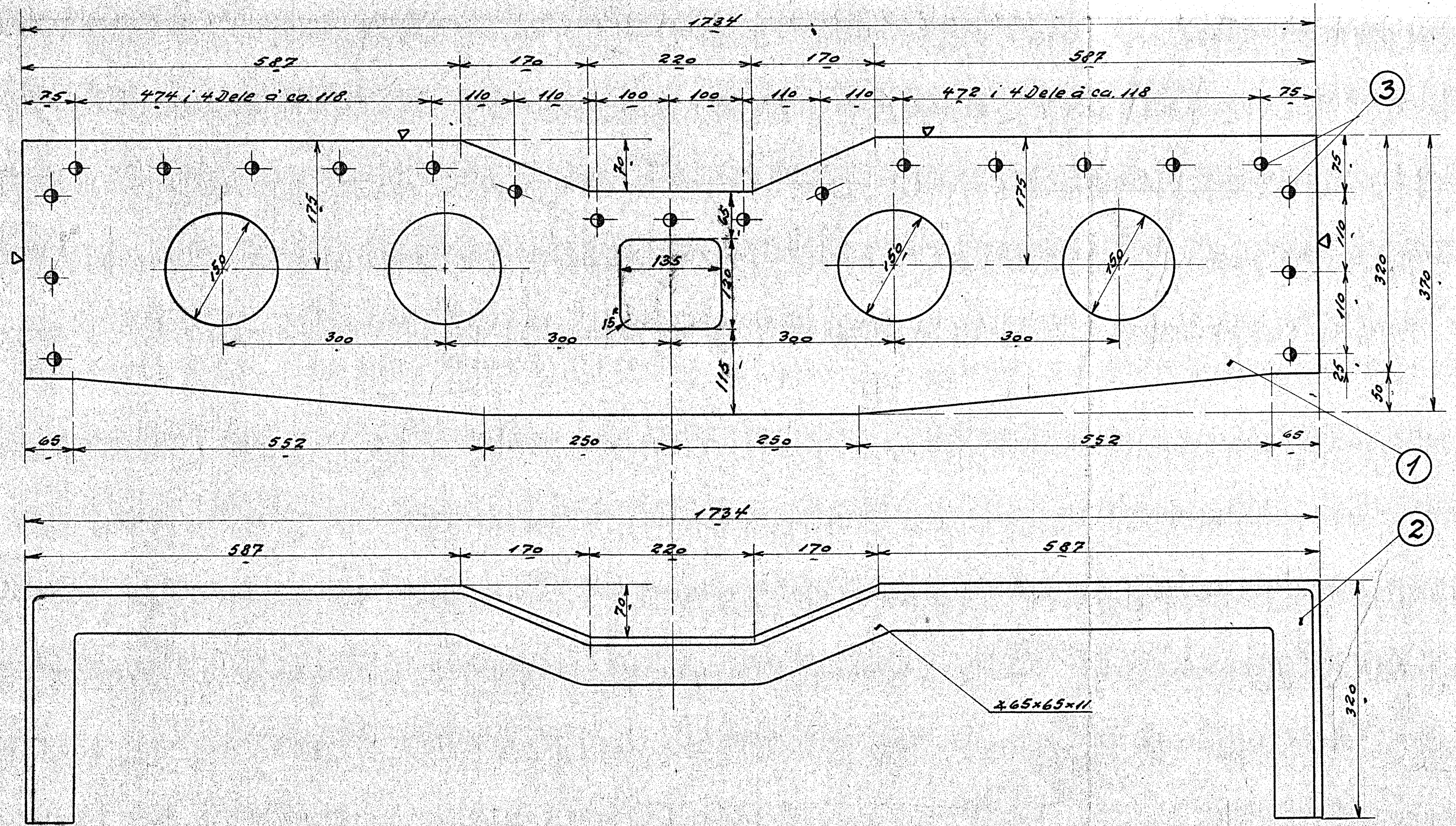
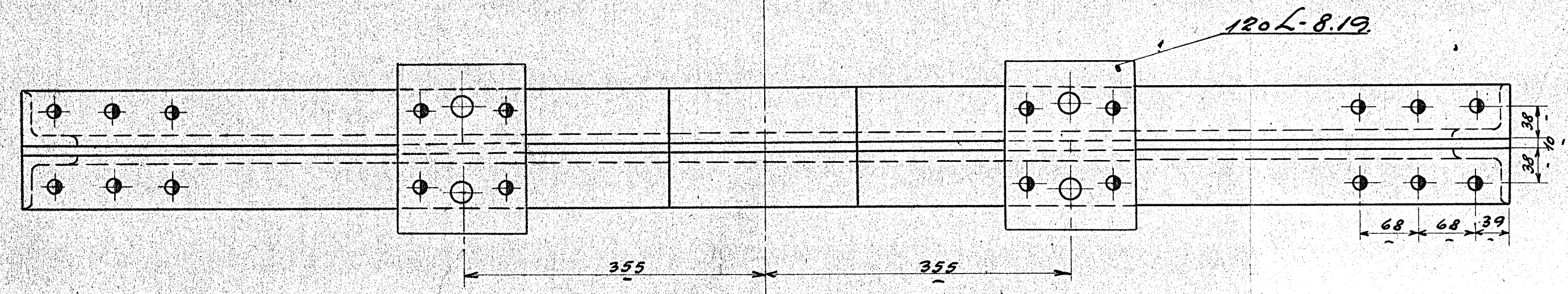


STYKLISTE NO. 51911.

NO.	STYK	BETEGNELSE	MÅL	BEVÆG.	NOTER
1	1	Plade		Flussj.	1750x200x10
2	2	Vinkelramme		"	x4900 x65x65x11
3	21	Nagle	16φ x 56	Nitter	Best.
4	8	do.	20φ x 60	"	"
5	8	do.	20φ x 50	"	"



Opmærkes efter
Ramme.



3/8 T. FUCHS BARRIS

Rammelverforbindelse VIII			
Diesel-el. 250/275 H. Motorloko.			
TEKNIKER	A.E.F.	INGENIØR	
REVISOR	R.T.		
REVISOR	1:5		120 L-8.18.
NO. 75-32.			