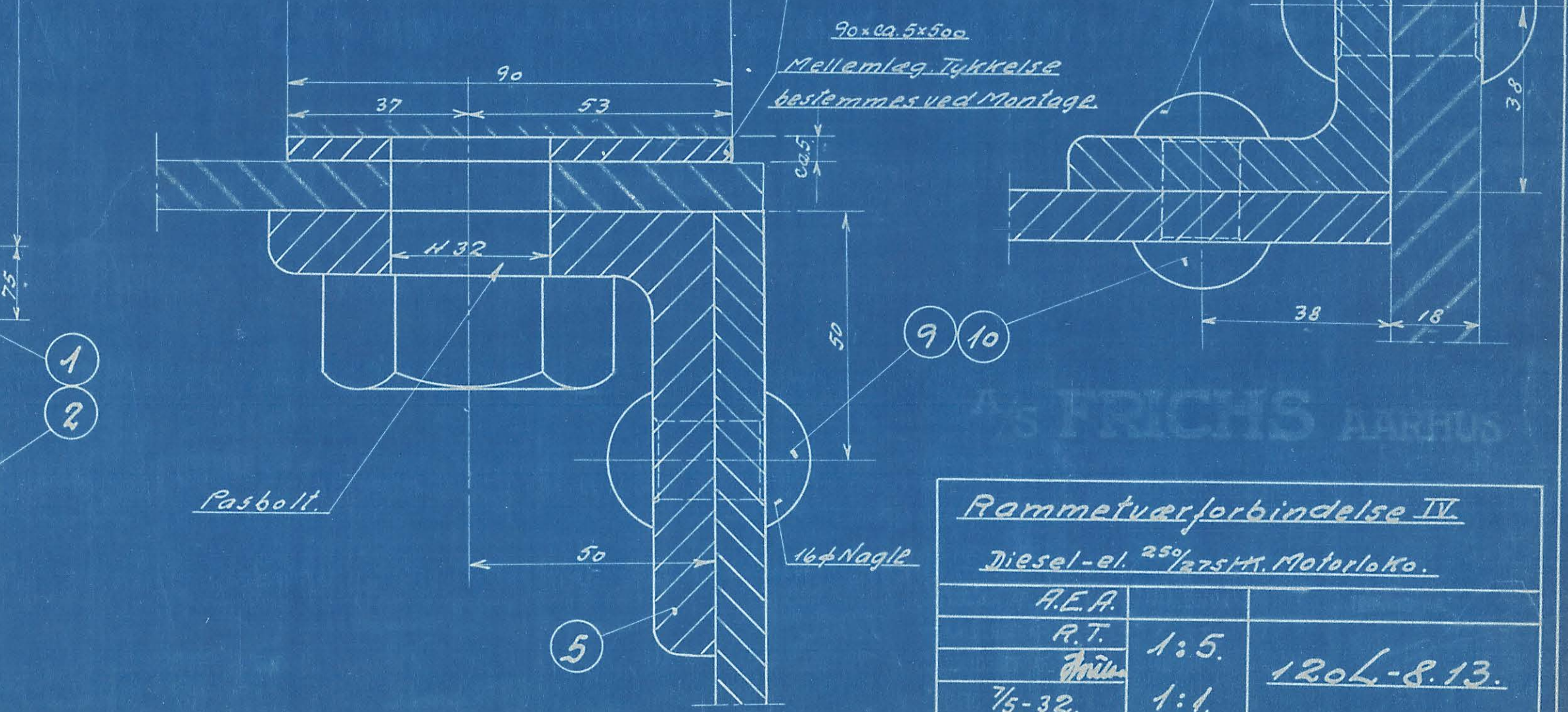
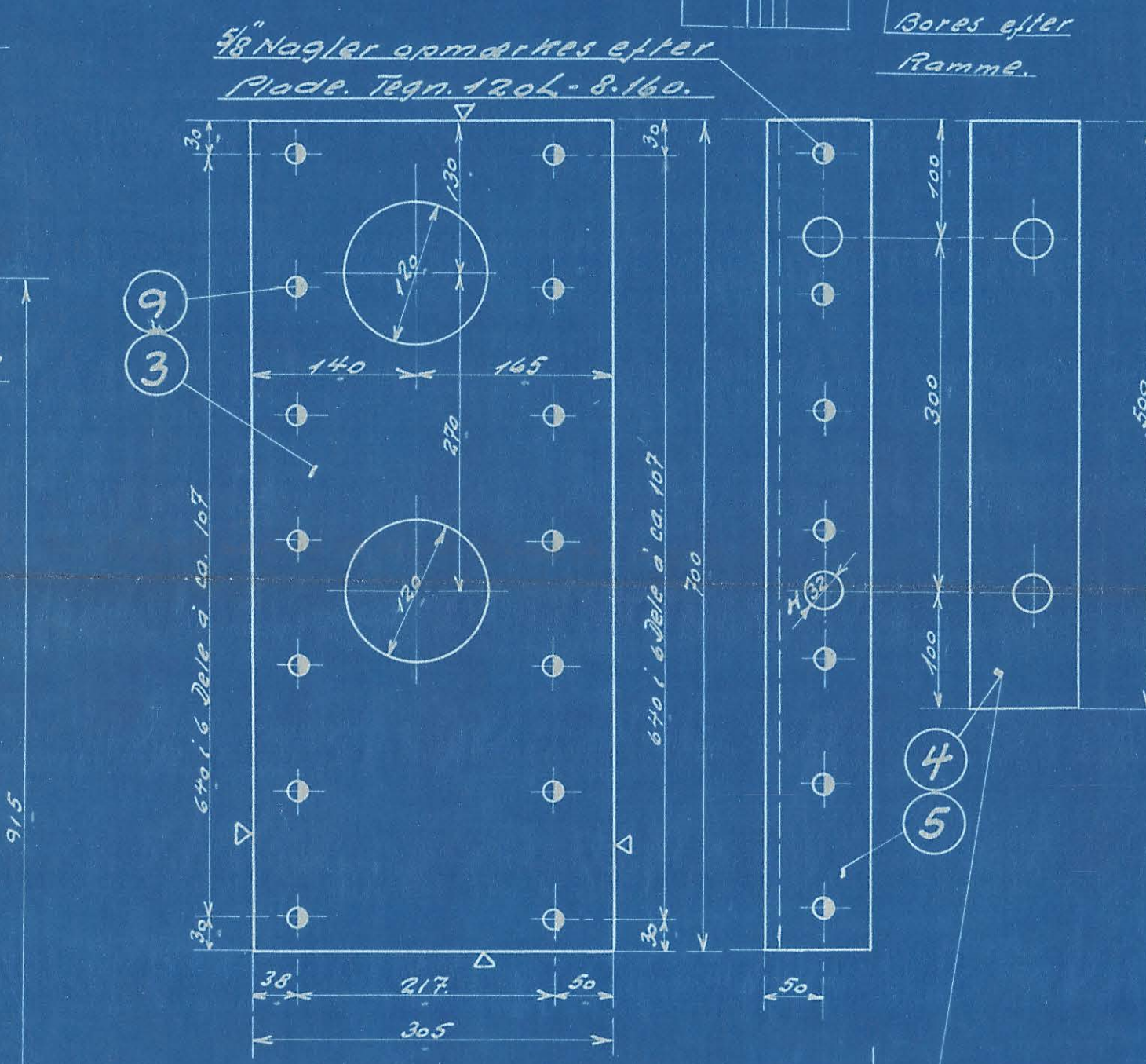
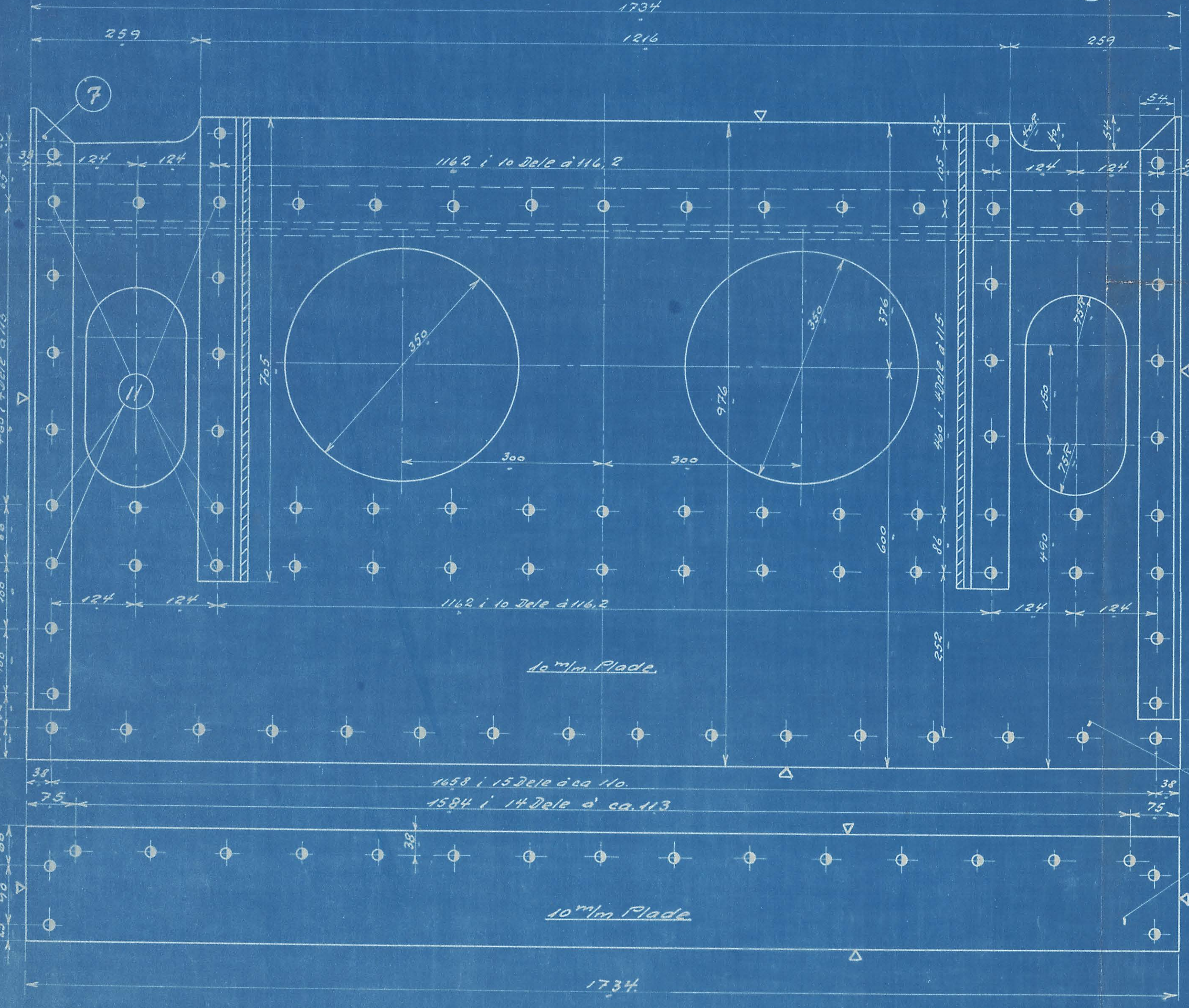
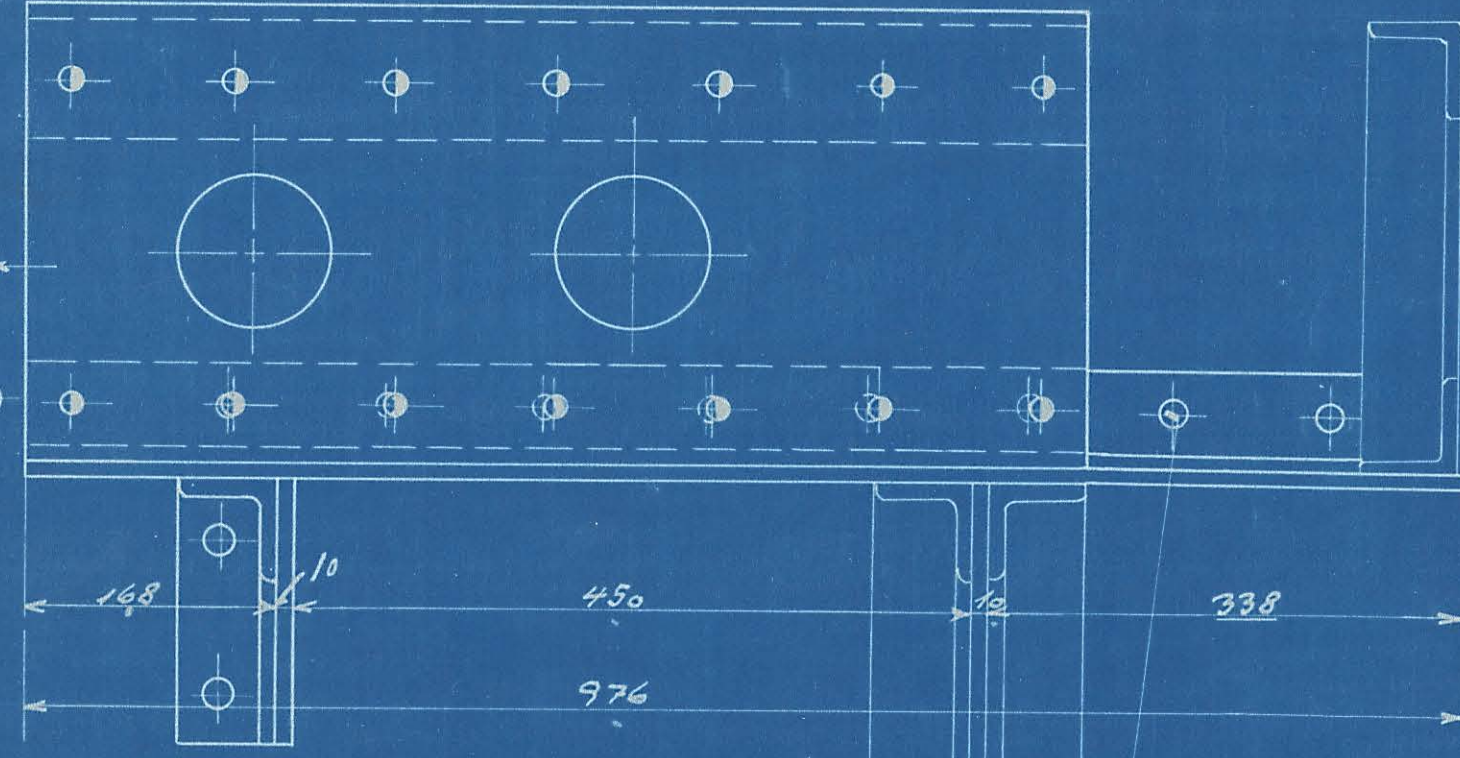
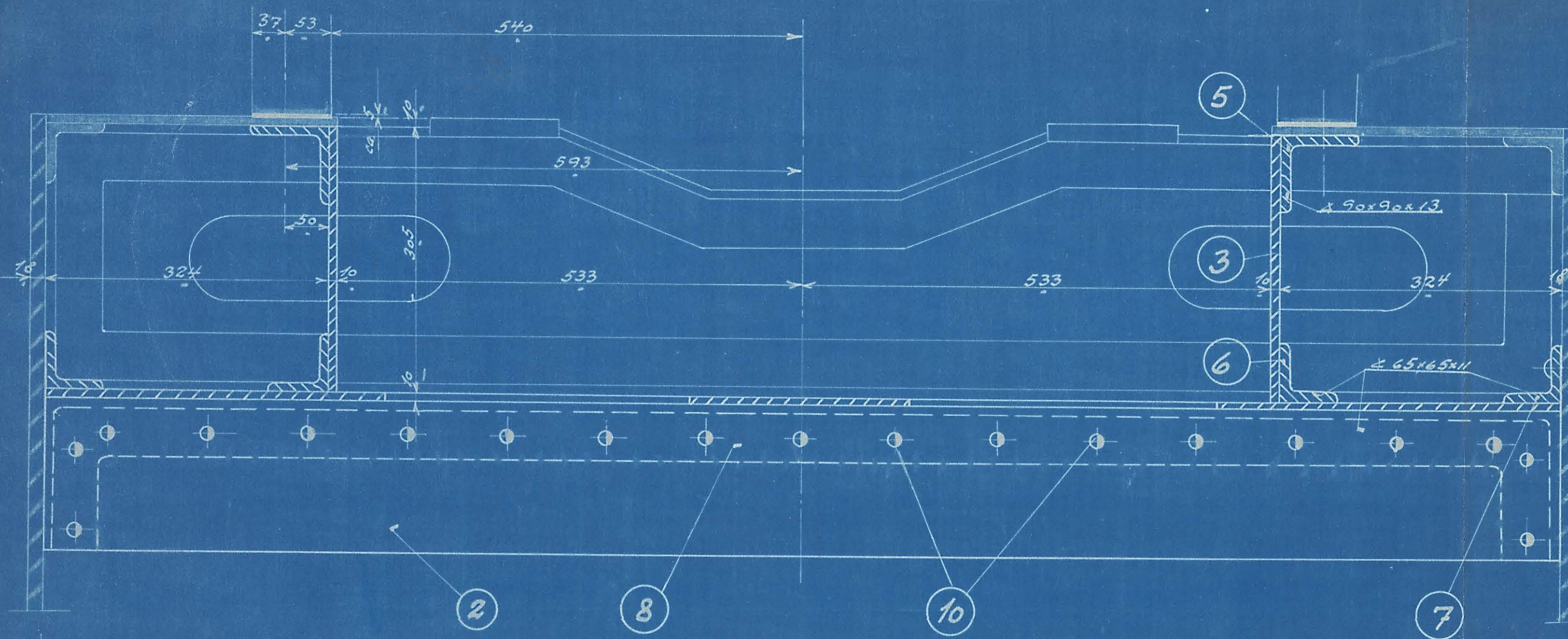


51905.

MÅLSTAV NO 51905.				
NO.	STYK.	BETEGNELSE	MÅL	BEMÆRKNING
1	1	Plade	Fluss	1750x1000x10
2	1	do.	"	1750x2000x10
3	2	do.	"	1450x320x10
4	2	Mellemlag 500 lg.	"	100x8x1020
5	2	Ligevinkel 700	"	790x90x13
6	2	do.	"	1420x1420
7	2	do.	"	65x65x11
8	2	do.	"	915x1850
9	1	Vinkelramme	"	65x65x11
10	14	Nagle	16x48	Nitte
11	110	do.	"x46	"
12	12	do.	"x56	"
13	16	do.	20x60	"
14	6	do.	20x50	"



Rammenforbindelse IV		
Diesel-el. 290/275 H. Motorloko.		
A.E.P.	1:5.	120L-8.13.
R.T.	1:1.	
7/5-32.		