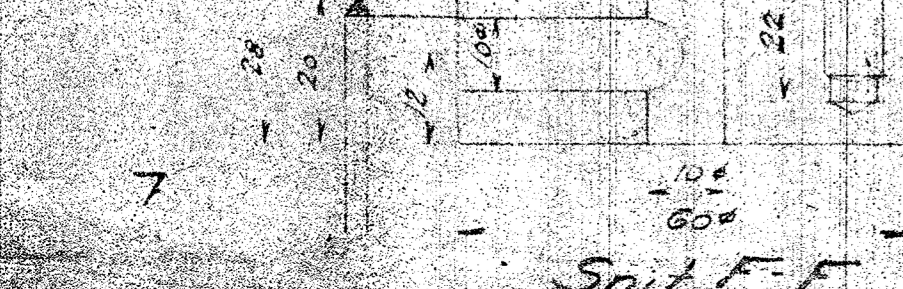
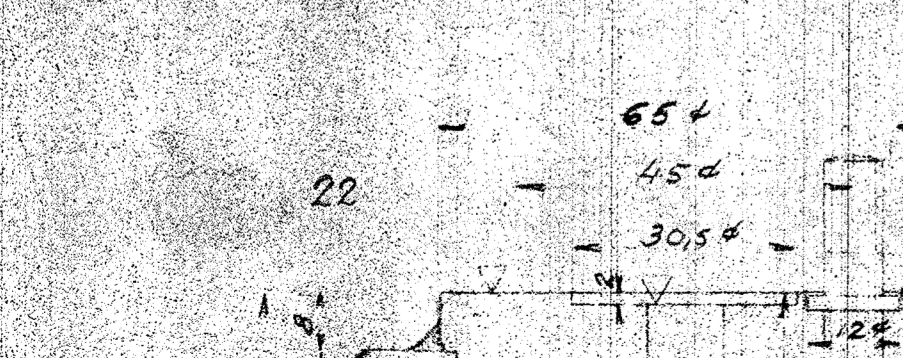
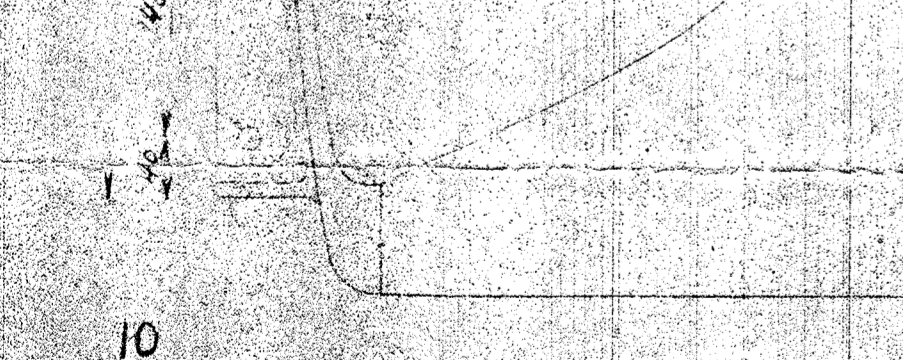
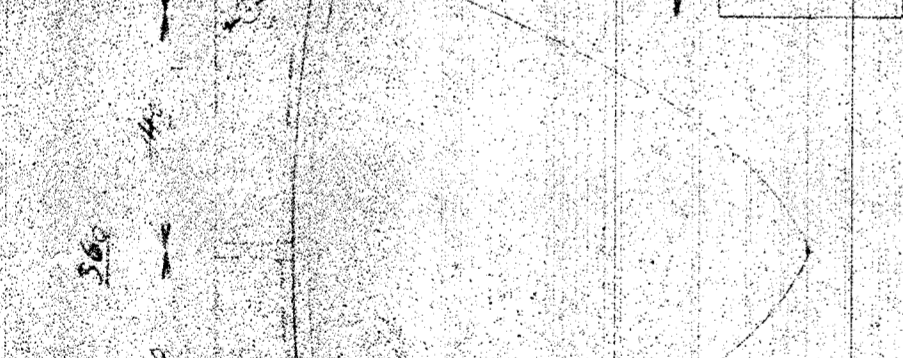
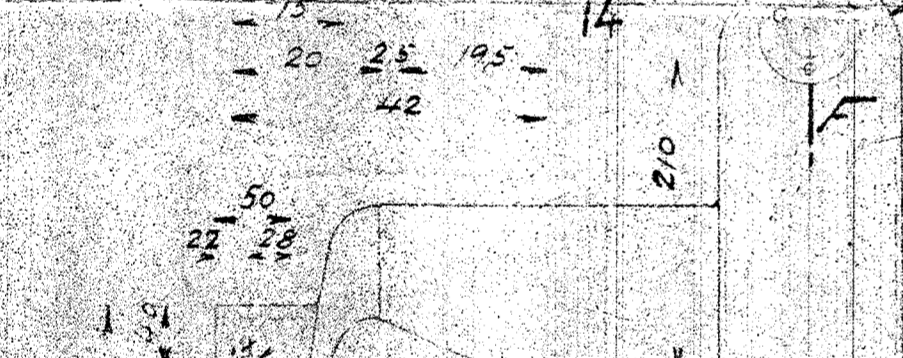
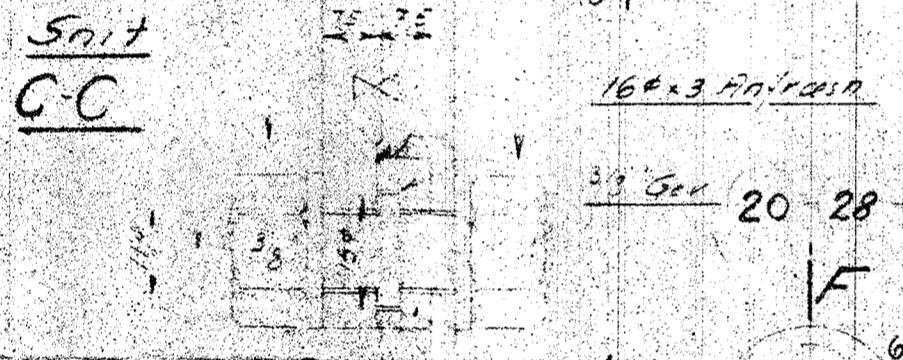


Qty	Part No.	Description	Material	Dimensions
1	1	SVøb	1620-840-3 Alum	2 1/2"
2	2	Skvulplader	"	"
3	2	Plade	"	"
4	2	Endebund	500	"
5	1	do	500	"
6	1	SVøb for Sump	"	"
7	1	Kasse for Armatur	"	"
8	2	Bund for do	"	"
9	1	Tragt	"	"
10	2	Bærevinkel	"	380
11	4	Afstivning 8mm	"	"
12	2	do	"	"
13	1	Flange	195/150-70	"
14	1	do	145/100-75	"
15	1	Dæksel	195/150	200
16	1	do	145/100	"
17	2	Rørbojring	50/65	70x70
18	1	Rørstik	"	"
19	1	do	"	"
20	14	Brysttop	3/8-42	150
21	6	do	3/16-36	120
22	2	Flange	65	6W
23	4	do	108-108-118	190
24	2	Studs	1 1/4 Gm	6W
25	2	do	1 3/8	160
26	2	Nippel	1/2 Alum	1 1/2
27	2	do	1/4 Alum	1 1/2
28	28	Spændestive	3/8	32
29	28	Møtrik	3/8	32
30	6	do	1/8	"
31	2	Vinkel	3/4 Alum	90
32	1	do	1	"
33	1	Patning	1 1/2 Alum	200
34	1	do	1 1/2 Alum	200
35	1 set	Vandstandsarmatur	"	"
36	1	Vandstandsglas	"	"

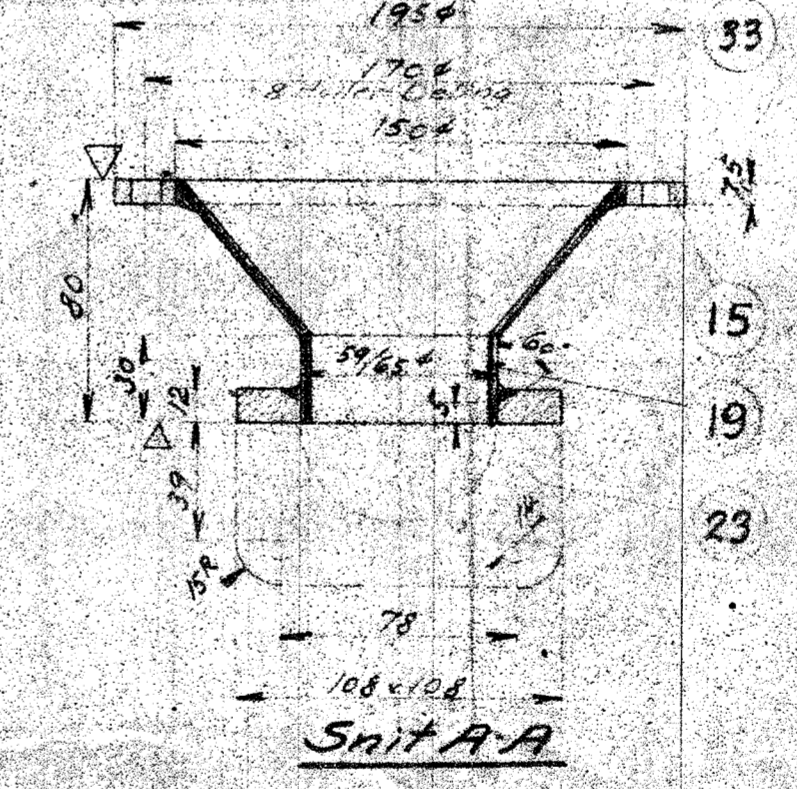
Snit C-C



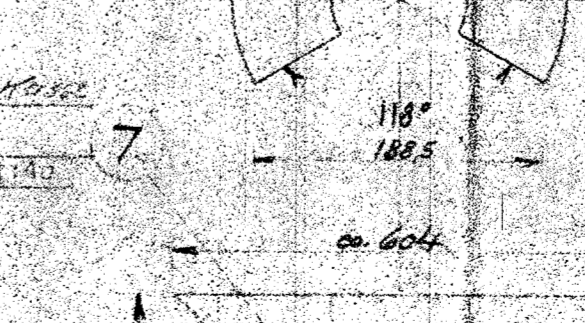
2 Skvulplader svejses solidt

36 Måleglas 16x515
Armatur for do Tegn. 12.6.42

Snit E-E



Tragt udfald



Obs! Beholder monteres efter Højtryk

DATE	FOR INDRING
A/S FRICHS AARHU	
Kølevandbeholder 4300	
Diesel af 40450 HK Motor 400	
1.5	1.25
5-12-33	128-160