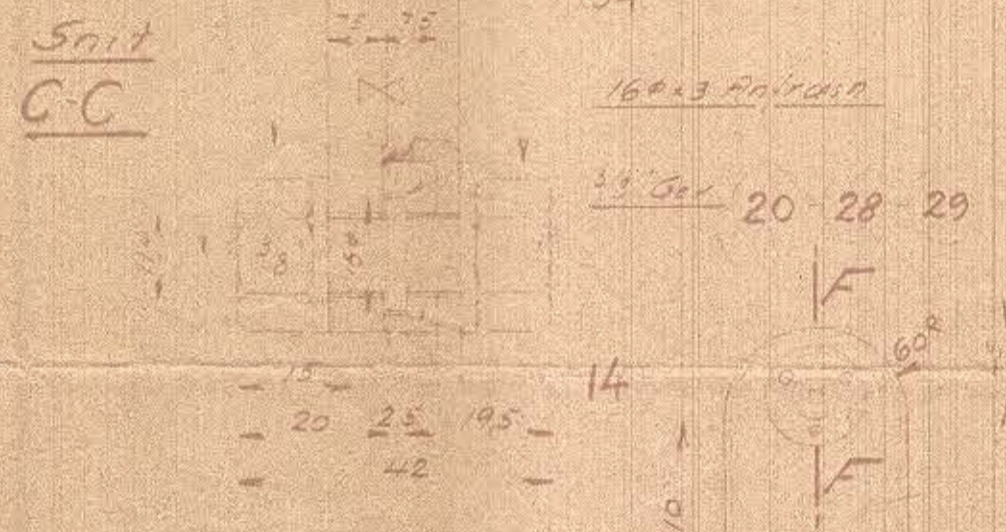


1	1	Swab	1650 x 240 x 3 Alum	
2	2	Skruvplader	"	
3	2	Plade	"	
4	2	Endebund	500	
5	1	do	400	
6	1	Swab for Sump	"	
7	1	Kasse for Armatur	"	
8	2	Bund for do	"	
9	1	Tragt	"	
10	2	Bærevinkel	"	380 x 250
11	4	Afslivning 8mm	"	
12	2	do	"	
13	1	Flange	195/150 70	200 x 200
14	1	do	145/100 50	"
15	1	Dæksel	195/150	200 x 200
16	1	do	145/100	"
17	2	Forbøjning	50/150 4mm	
18	1	Rørst.	"	1400
19	1	do	"	"
20	14	Brustop	3/8 x 42	150 x 200
21	6	do	3/8 x 36	120 x 250
22	2	Flange	654 Alum	6W 120
23	4	do	108 x 109 x 12	157 190 x 165
24	2	Studs	1 1/4 Gal	6W 120
25	2	do	1 1/2	1500
26	2	Nippel / Alum	1/2 Alum	200 x 200
27	2	do	3/8 Alum	6W 120
28	28	Spændeskive	3/8 Alum	22 x 200
29	28	Metrik	3/8	1000
30	6	do	5/16	"
31	2	Vinkel	3/4 Alum	6W 120
32	1	do	1"	"
33	1	Patniog	195/150	200 x 200
34	1	do	145/100	"
35	1 set	Kandstændegarn	100 x 100	
36	1	Kandstændeglas	160 x 515	

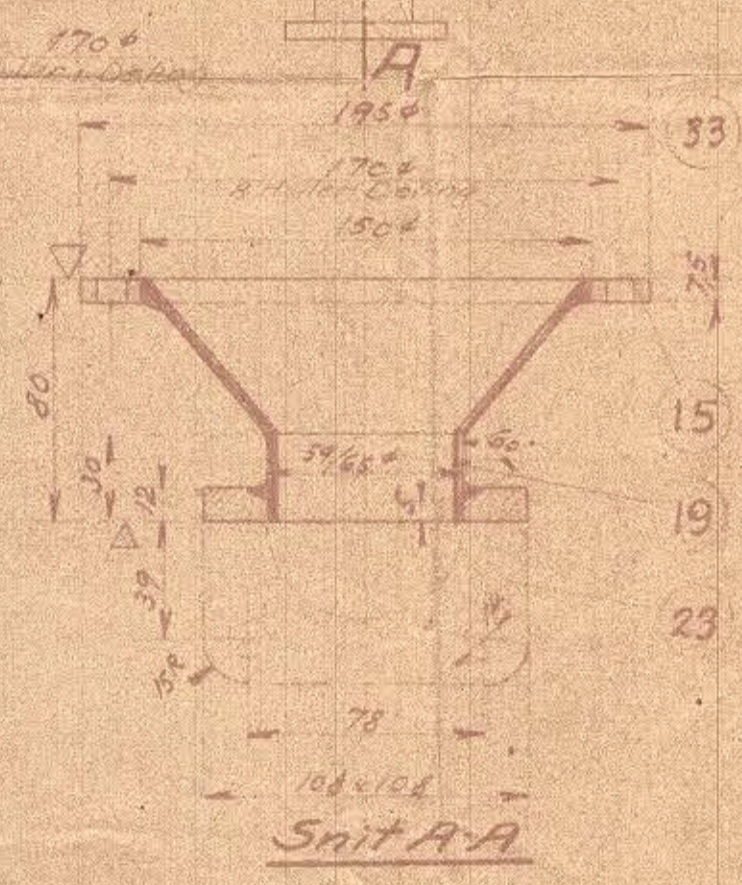
Snit C-C



2 Skruvplader svejdes solidt

36 Maaleglas 160 x 515 Armatur for do tegning 641

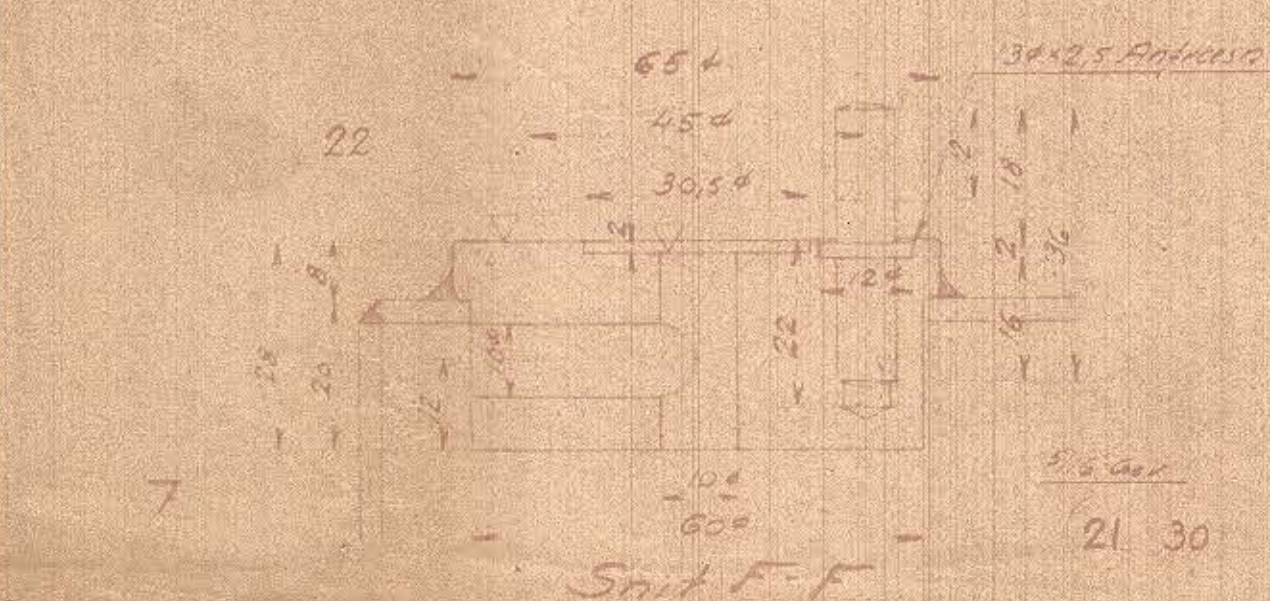
Snit B-B



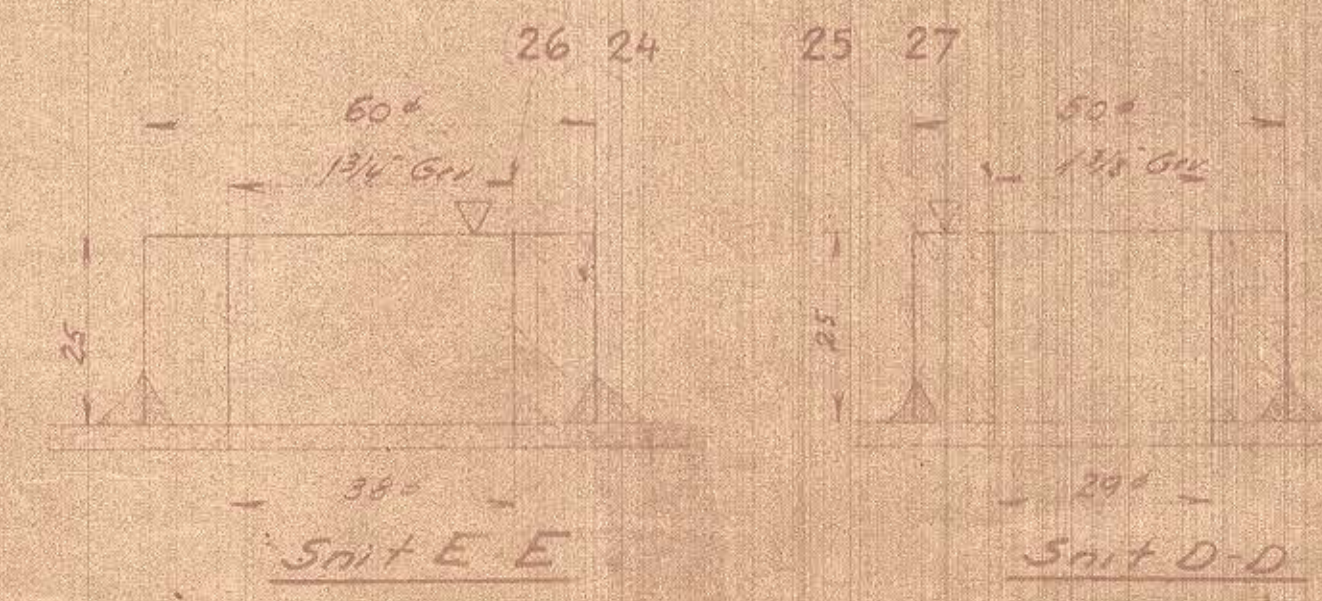
Snit A-A



Obs! Beholderen monteres med Hydrostat

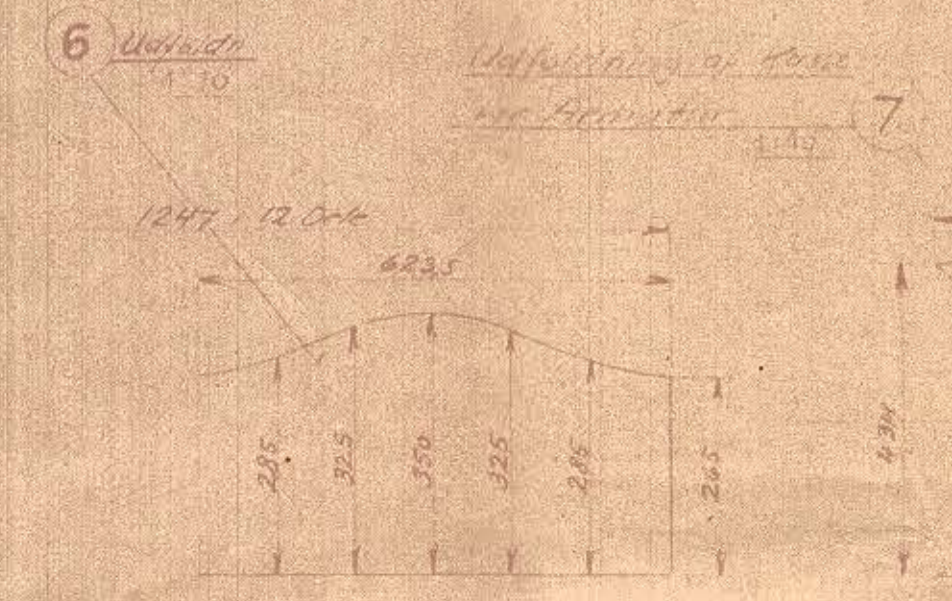


Snit F-F



Snit E-E

Snit D-D



A/S FRICHS AARHUS		
Kølevandsbeholder 430 Lit		
Diesel ol. 40/450 HK Motorolie		
5-12-33 1:25 128 x 160		