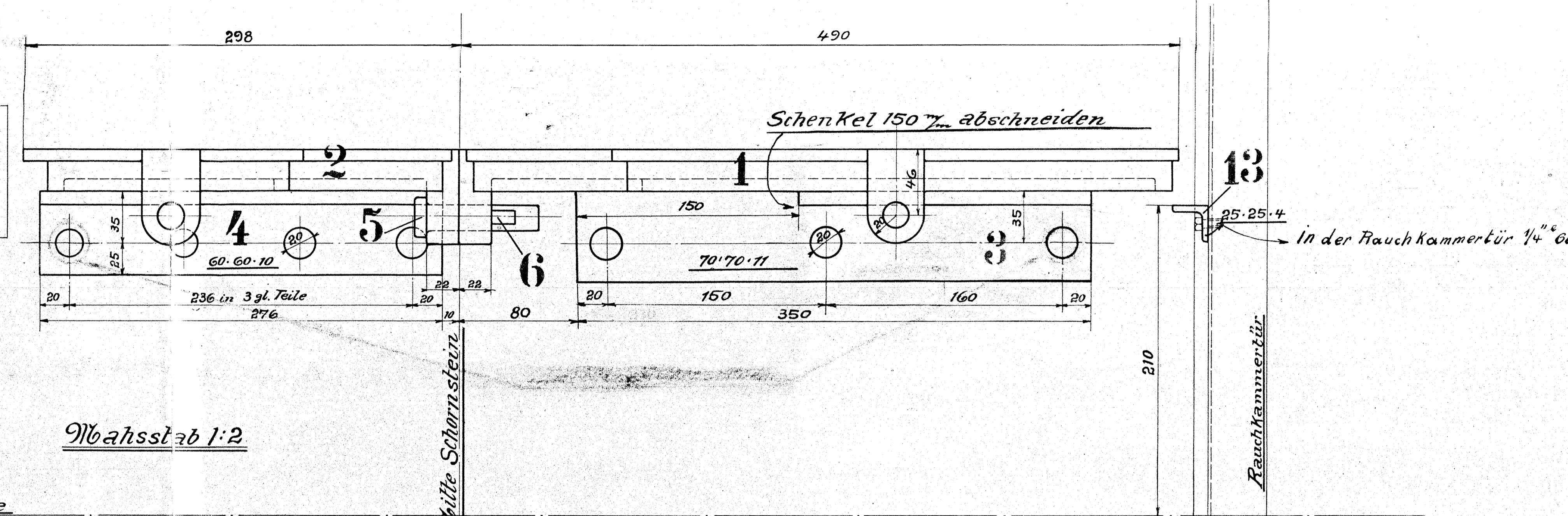
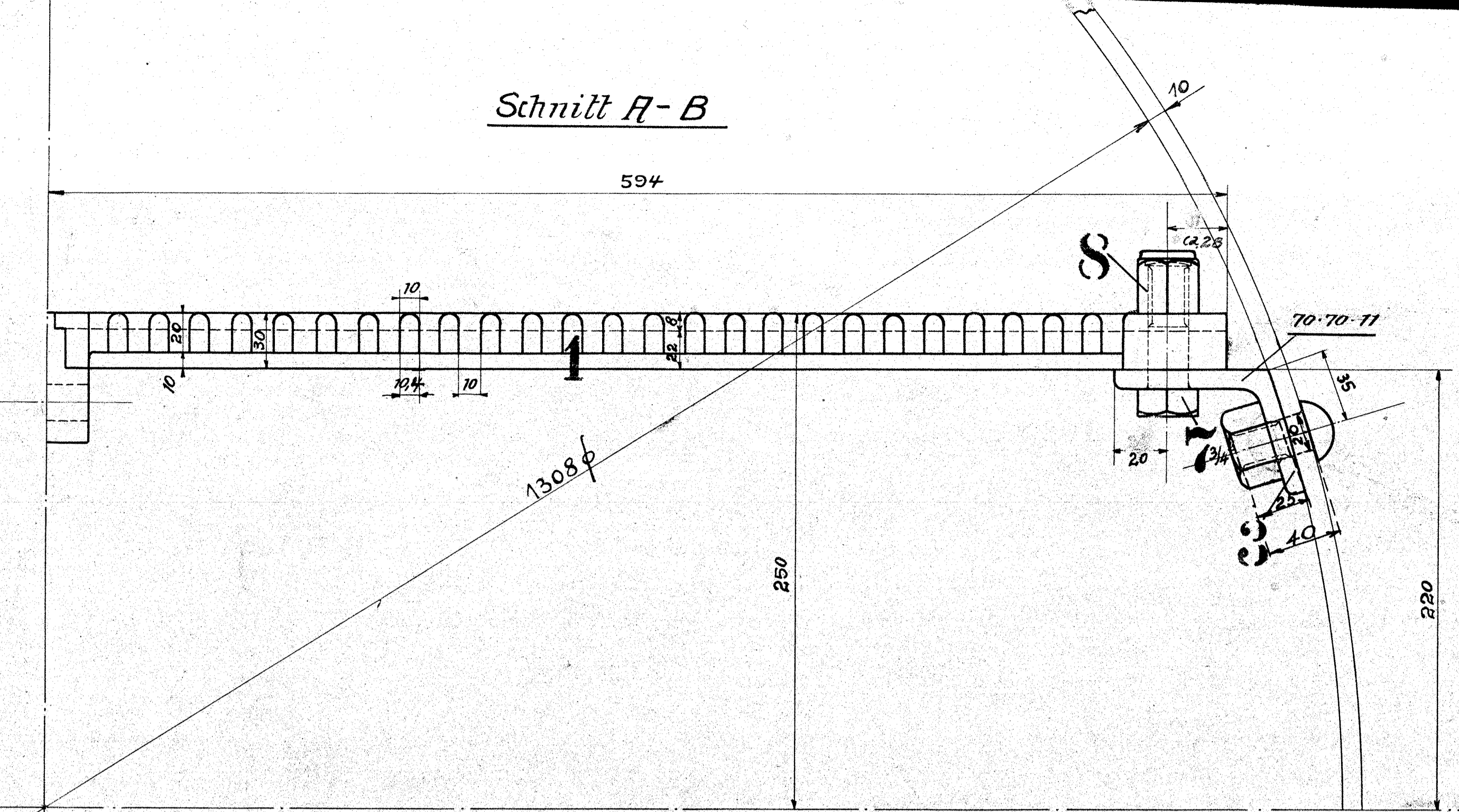
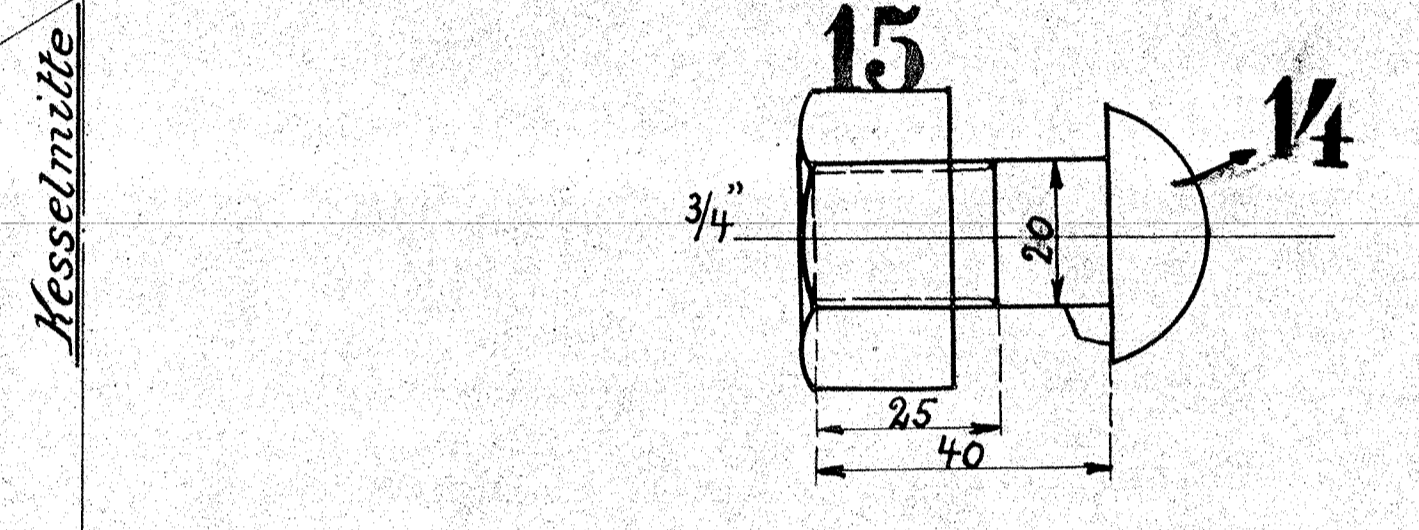


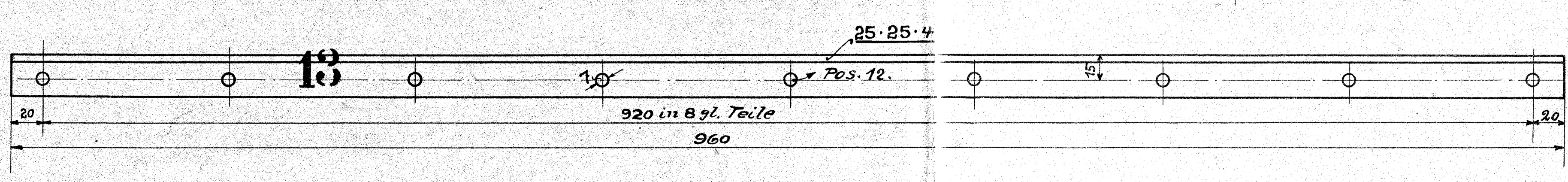
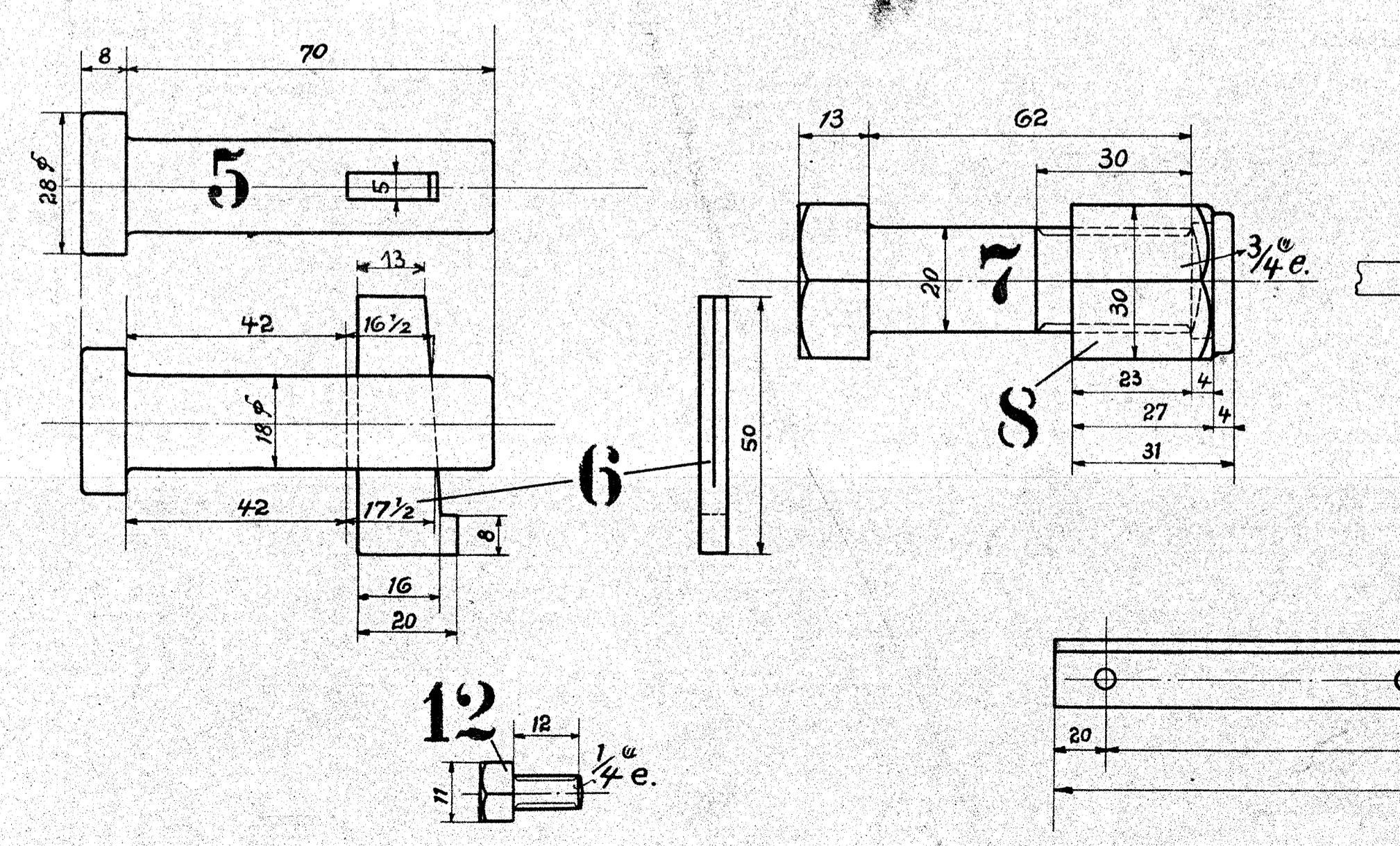
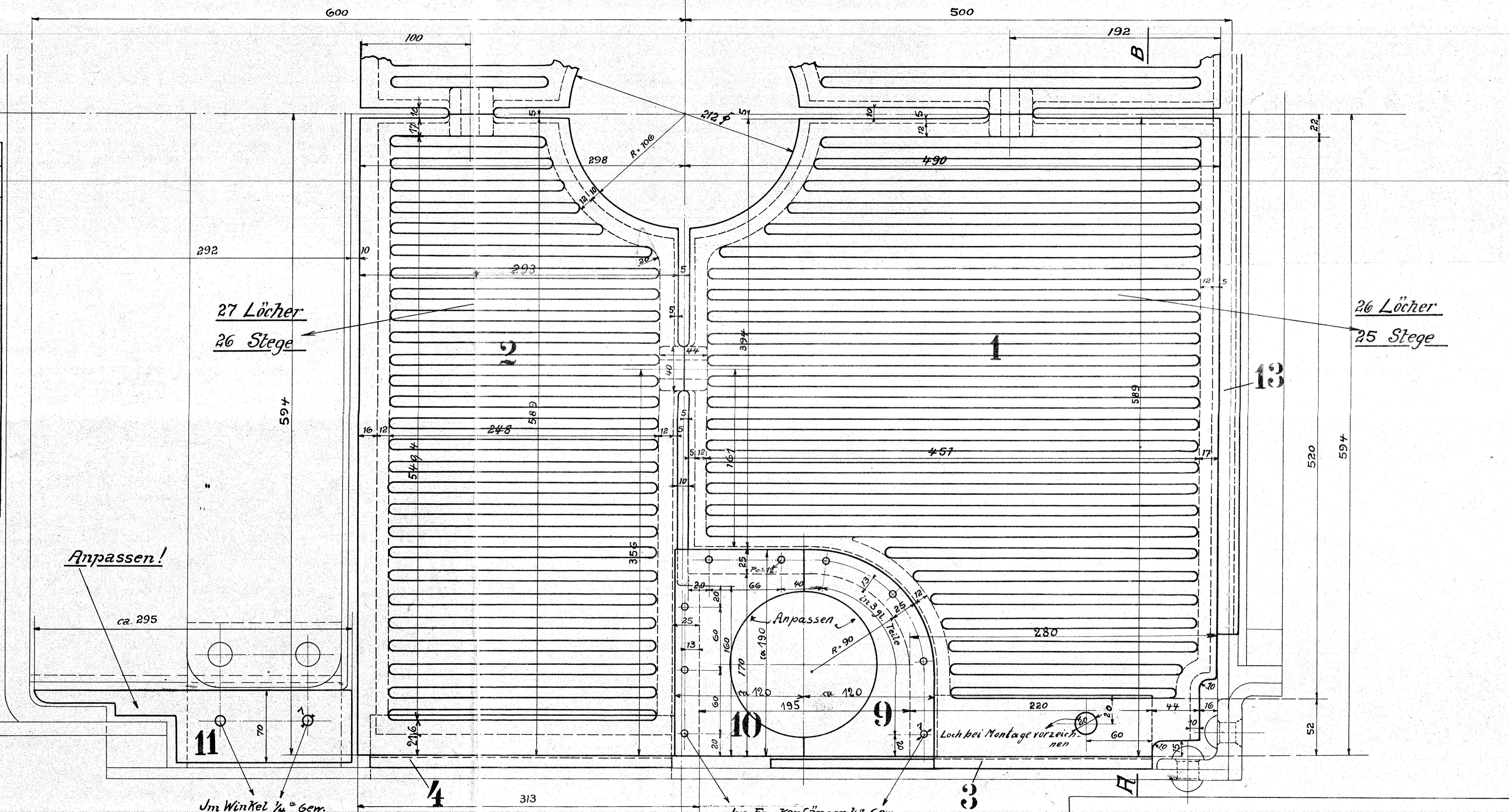
Schnitt A-B



Maßstab 1:2



Ausführung für eine Lokomotive.				Material-Bestellung für eine Lokomotive.		Fertig-Gewicht	
Stückzahl	Benennung	Nummer	Material	Werkstoff	Zeichen- Pos.	Dimensionen und Modellzeichen	Kg.
2	Vord. Funkenfänger	1	G. E.				
2	Hintere "	2	"				
2	W.E. 70-70-11 vorn	3	F.L.E.				
2	W.E. 60-60-10 hint.	4	"				
4	Bolzen	5	"				
4	Splinte	6	"				
2	Schrauben 3/4"	7	"				
2	Muttern "	8	R. G.				
2	Passbleche 3/4"	9	F.L.E.				
2	" "	10	"				
2	" "	11	"				
31	Schrauben 1/4"	12	"				
1	W.E. 25-25-4	13	"				
14	Schrauben 3/4"	14	"				
14	Muttern	15	"				



Funkenfänger.
Fabr. Nr. 11016
E. A. 11. II. 12.
L. Hoff