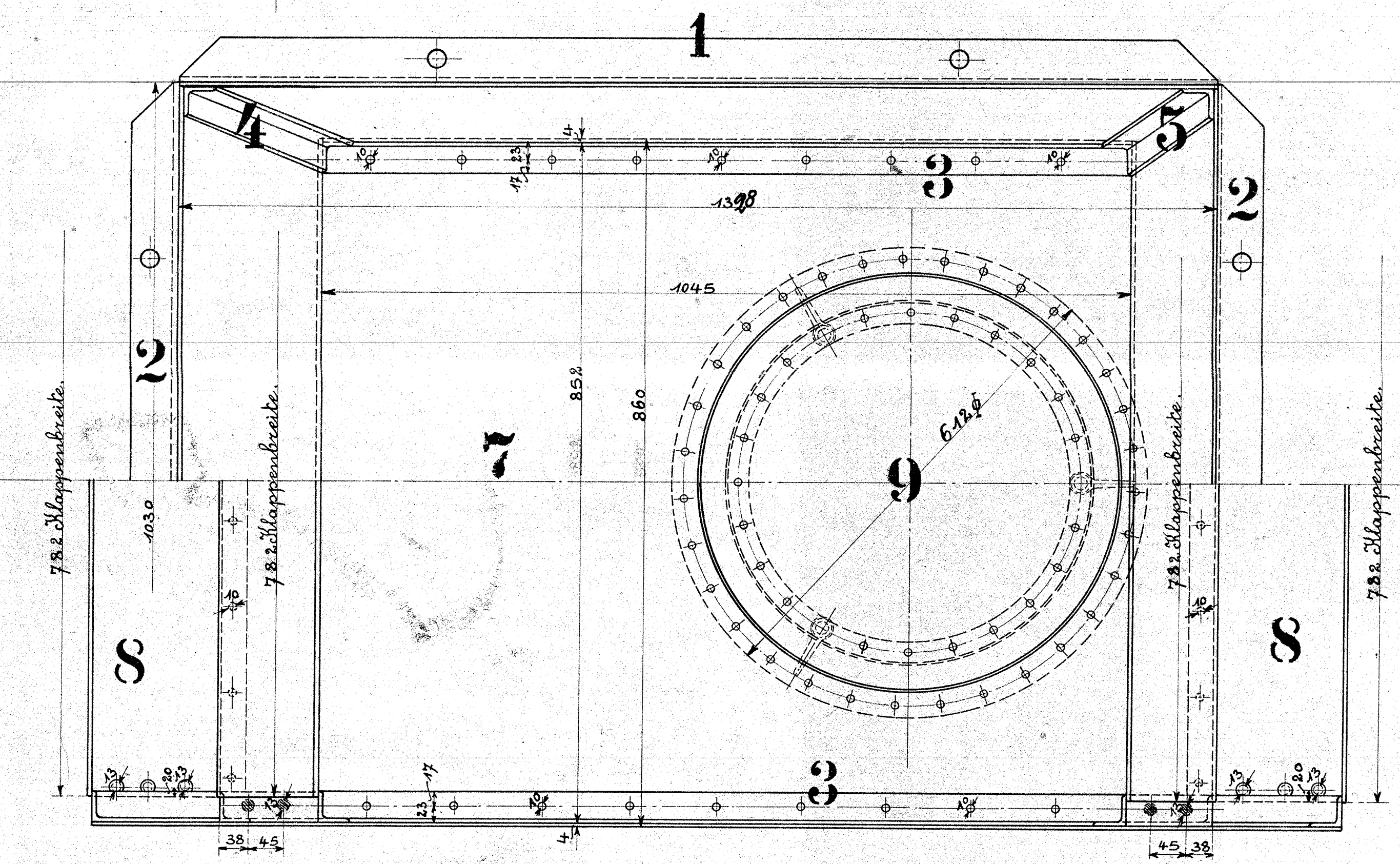
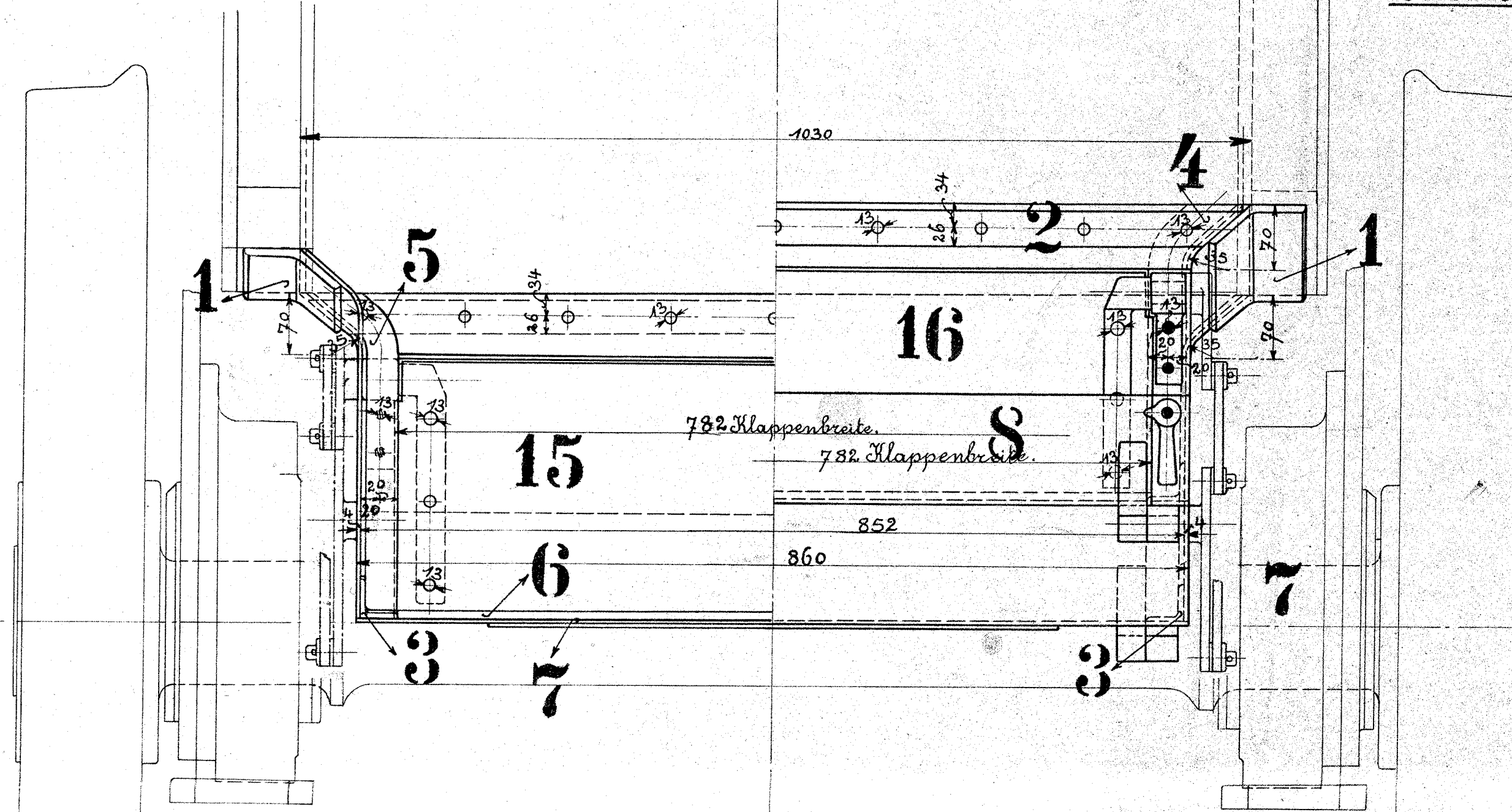


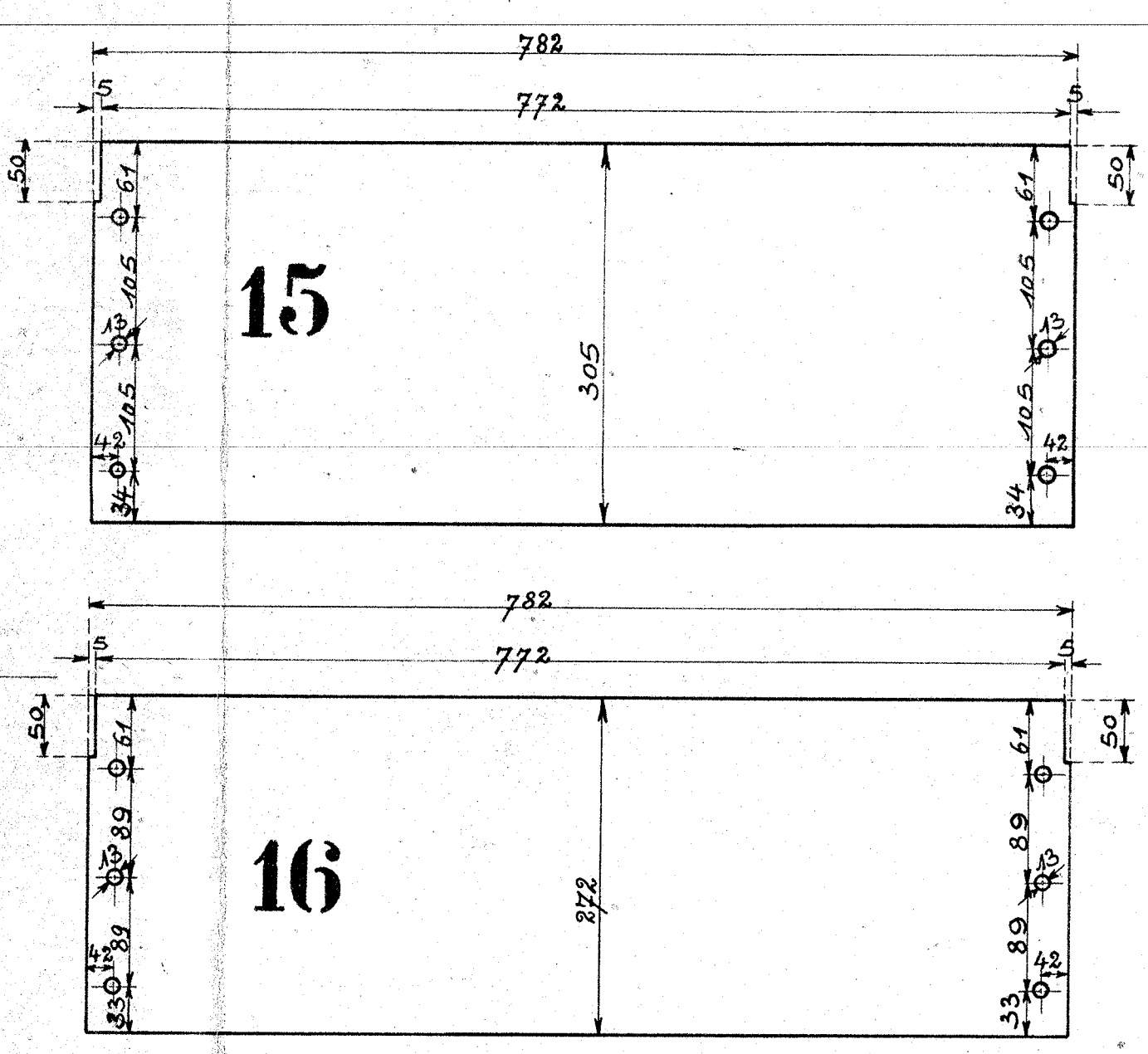
links.

rechts.



• Schrauben.

⊕ Platte.



Ausführung für eine Lokomotive.					Material-Bestellung für eine Lokomotive.		Fertig-Gewicht
Stückzahl	Benennung	Nummer	Material	Werkstatt	Zeichen-Par.	Dimensionen und Modellzeichen.	kg.
2	Pl. E. 60.60.8	1	Fl. E.				
2	" " "	2	" "				
2	" " 40.40.5	3	" "				
2	" " "	4	" "				
2	" " "	5	" "				
2	Pl. Eisen 772.30.10	6	" "				
1	Bodenblech 1314.860.4	7	" "				
2	Bodenklappen 782.830.4	8	" "				
1	Mannlochdeckel.	9	" "				
1	Ring Pl. E 36x5	10	" "				
1	Ring " " 60x5	11	" "				
2	Seitenbleche 1610.460.4	12	" "				
1	Vorderwandblech 1030.128.4	13	" "				
1	Hinterwandblech 1030.190.4	14	" "				
1	vordere Klappe 782.305.4	15	" "				
1	hintere Klappe 782.272.4	16	" "				

Aschkasten.