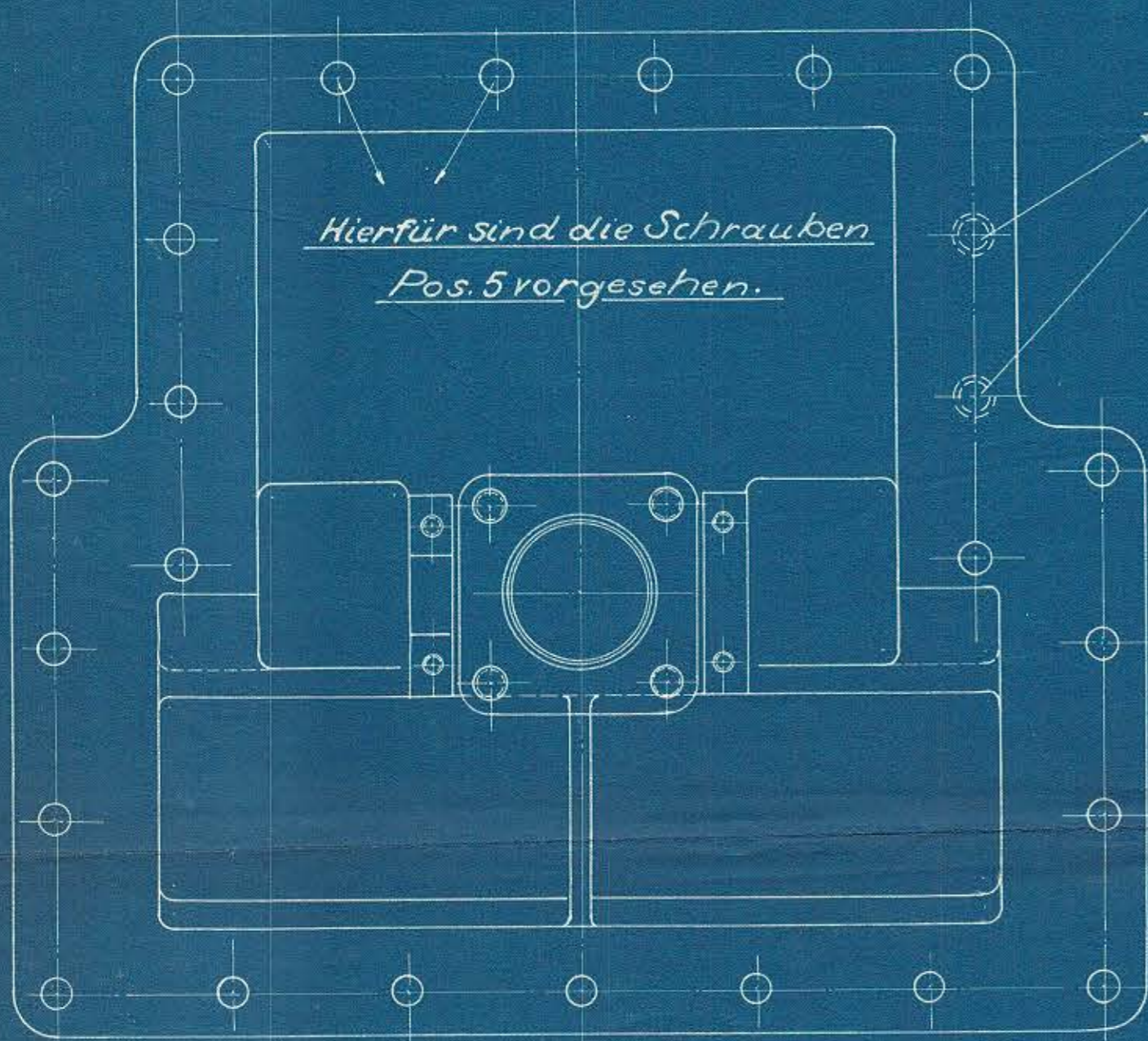
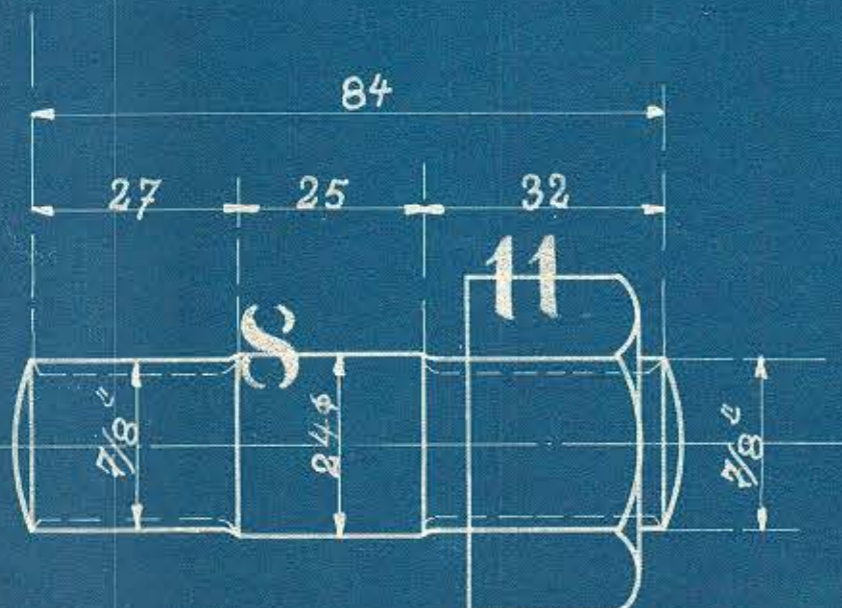
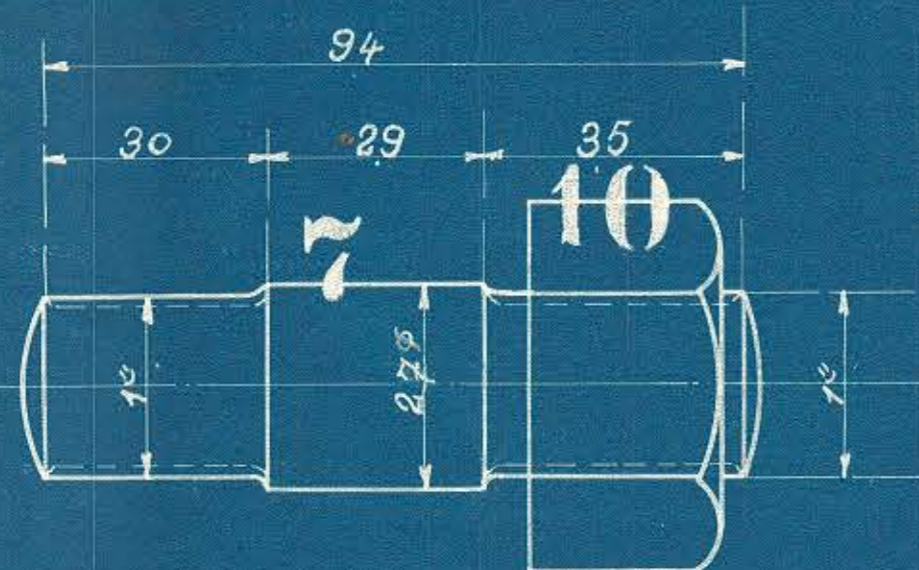
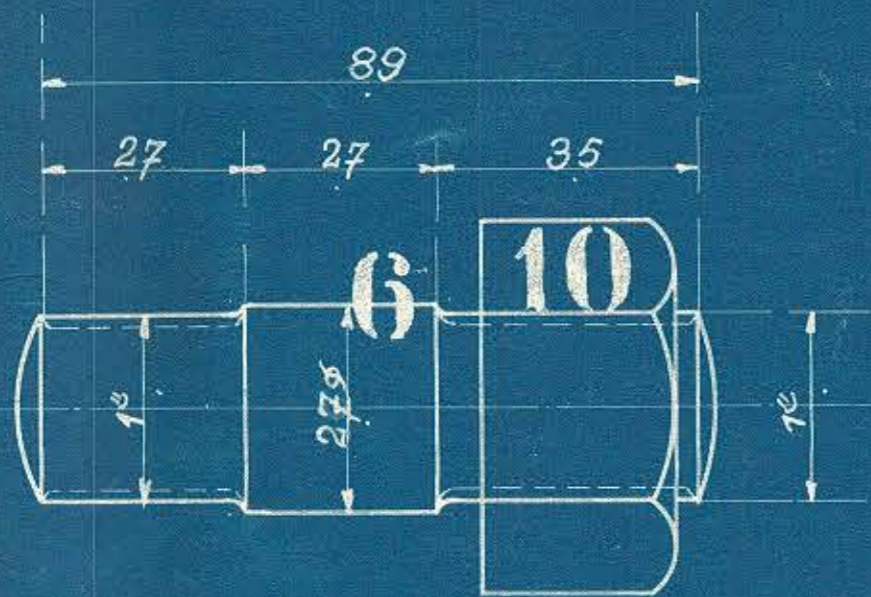
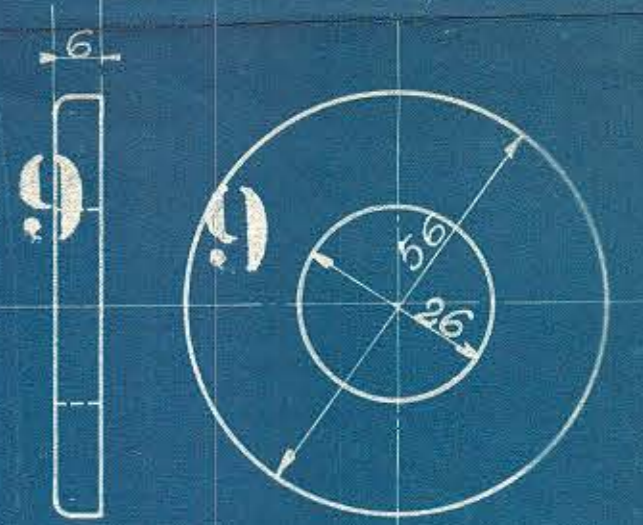
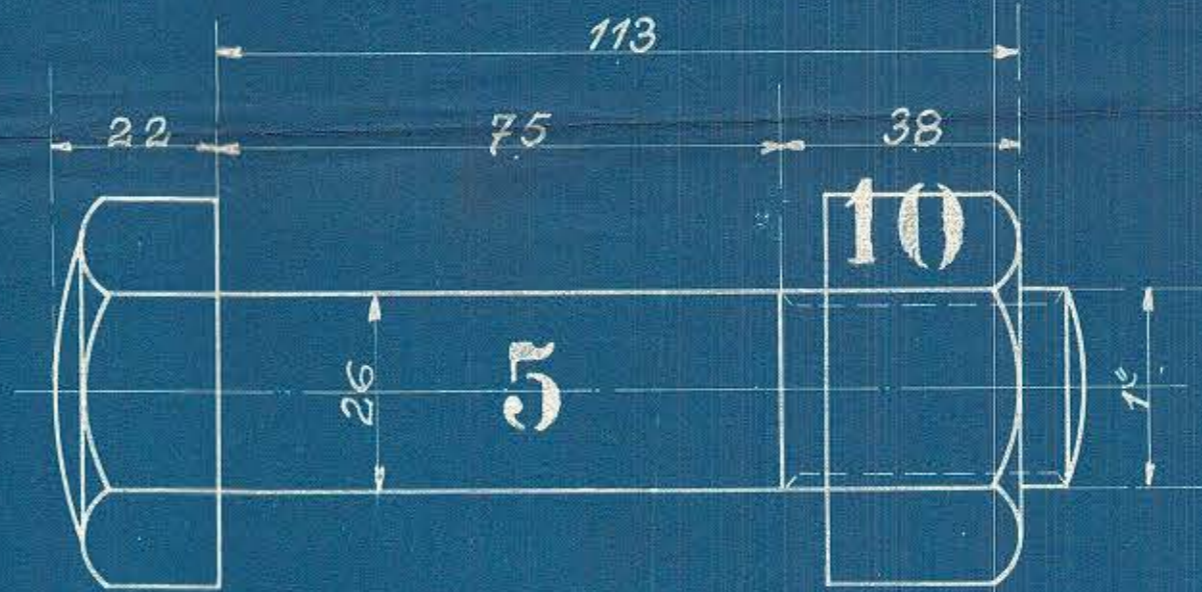
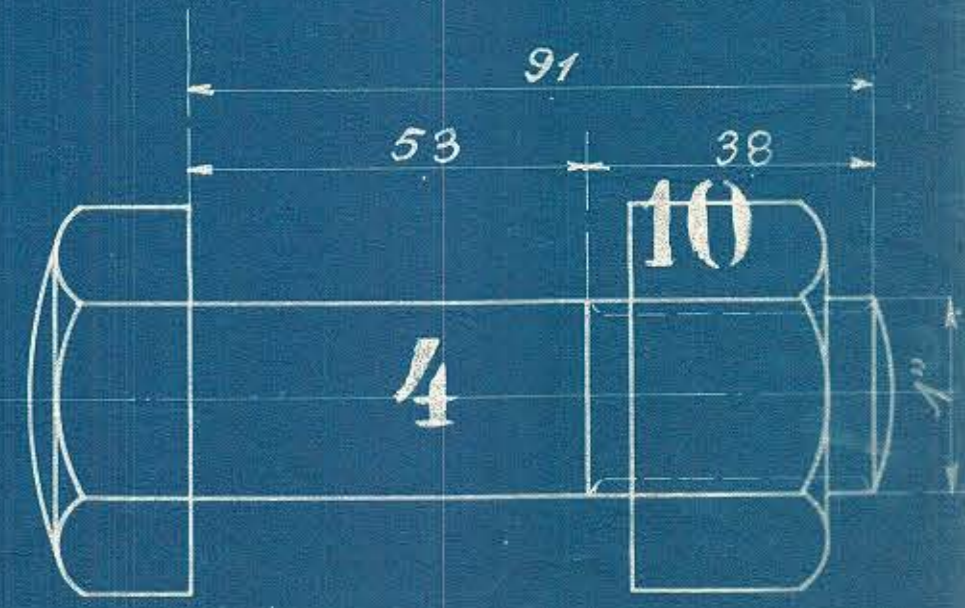
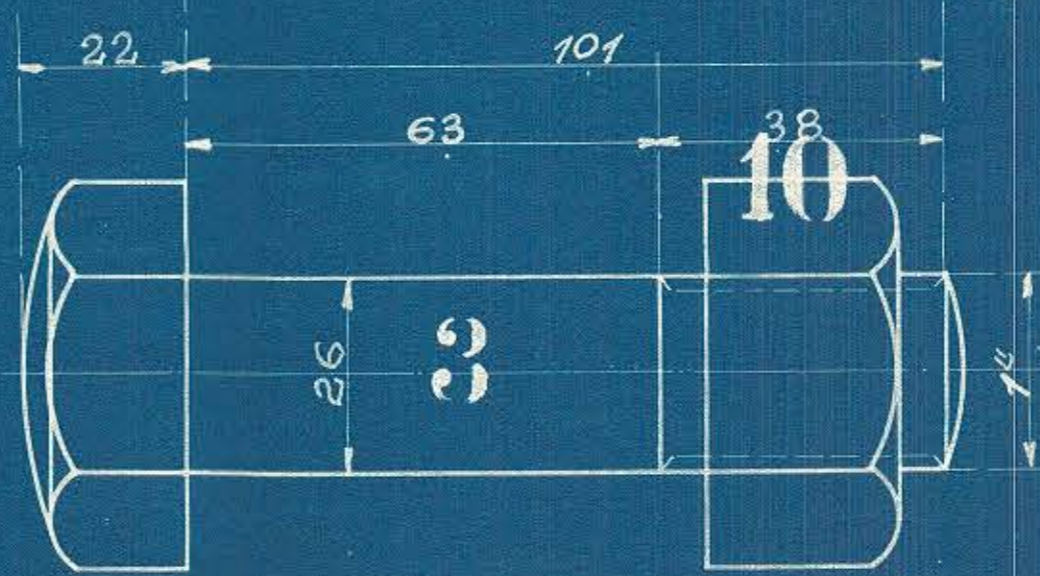


Ausführung für eine Lokomotive				Material	Bestellung	Fertig	
Stückzahl	Benennung	Nummer	Material	Werkstatt	Zeichen Pos.	Dimensionen und Modellzeichen	Kg
4	Passkeile	1	F.L.E.				
8	Kopfschrauben 5/8 <sup>c</sup>	2	" "				
42	Schrauben 1 <sup>b</sup>	3	" "				
4	" " 1 <sup>b</sup>	4	" "				
4	" " 1 <sup>b</sup>	5	" "				
32	Schrauben 1 <sup>b</sup> z. v. Cylinderd.	6	" "				
16	" " 1 <sup>b</sup> z. h. Cylinderd.	7	" "				
0	" " zuden Dampf Ein- u. Auslassflanschen	8	" "				
50	Unterlegscheiben	9	" "				
98	Mütern 1 <sup>b</sup>	10	" "				
0	" " 7/8 <sup>b</sup>	11	" "				



Hierfür sind die Schrauben  
Pos. 4 vorgesehen.



Cylinderkeil u. Schrauben.