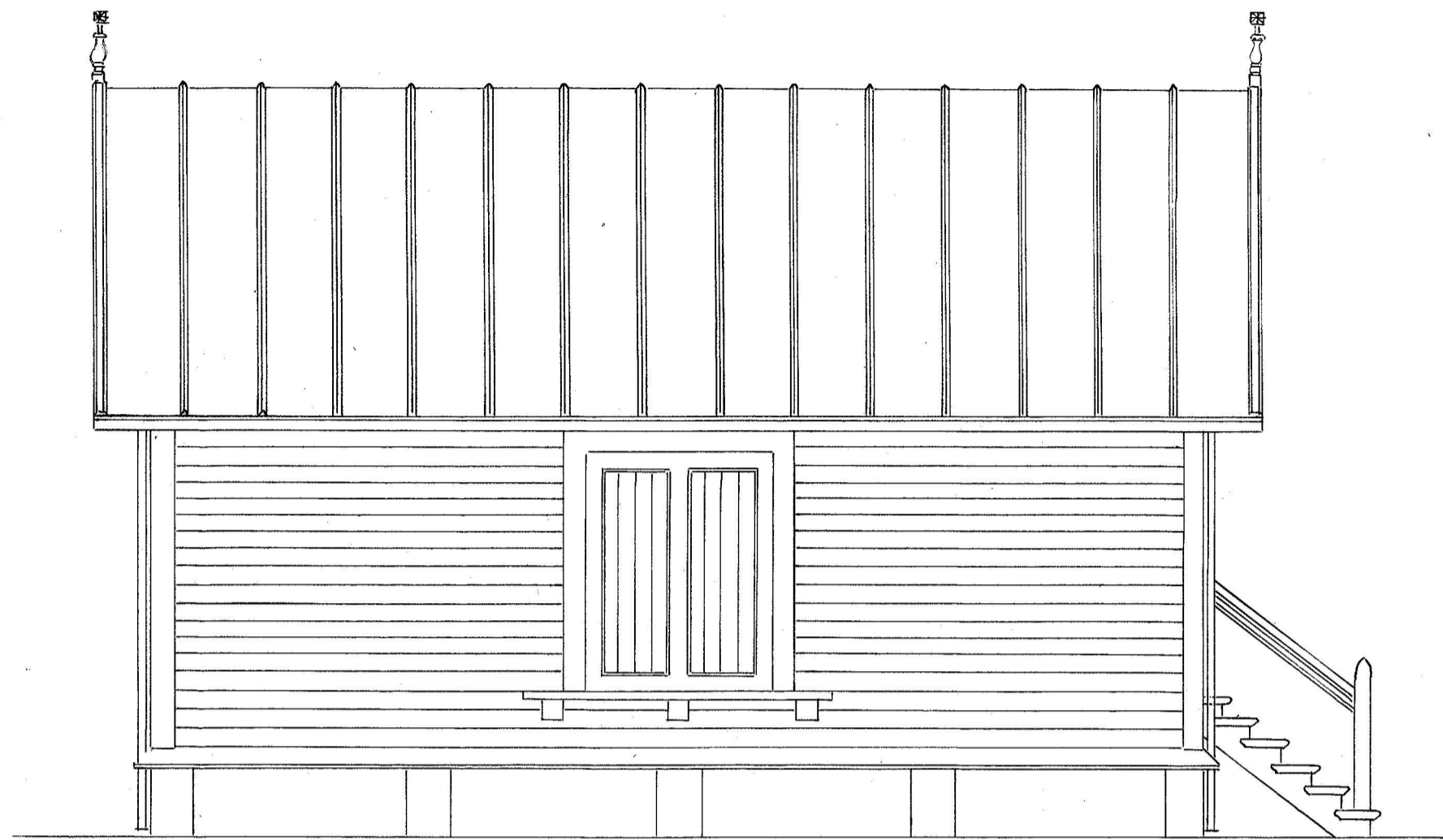
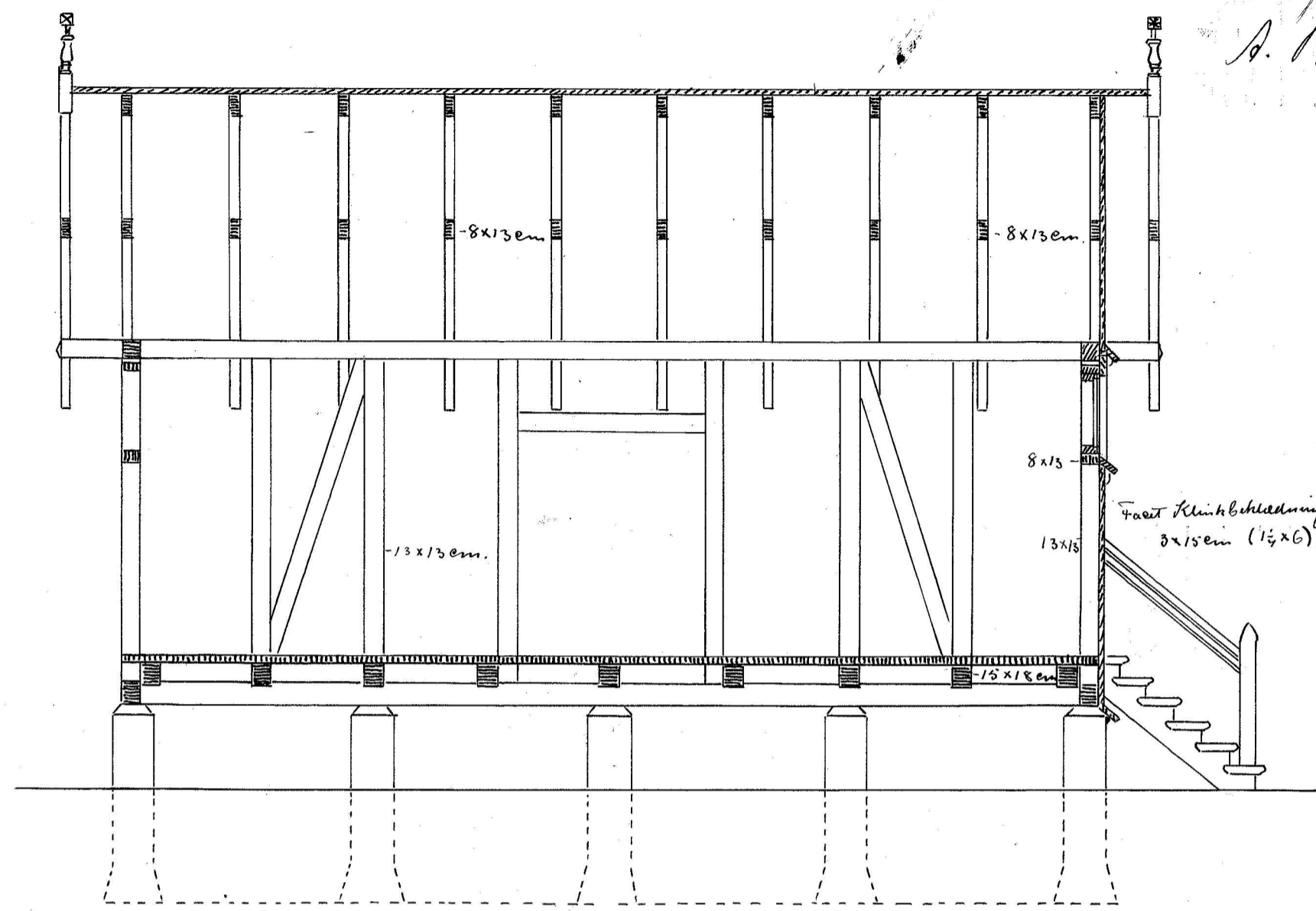


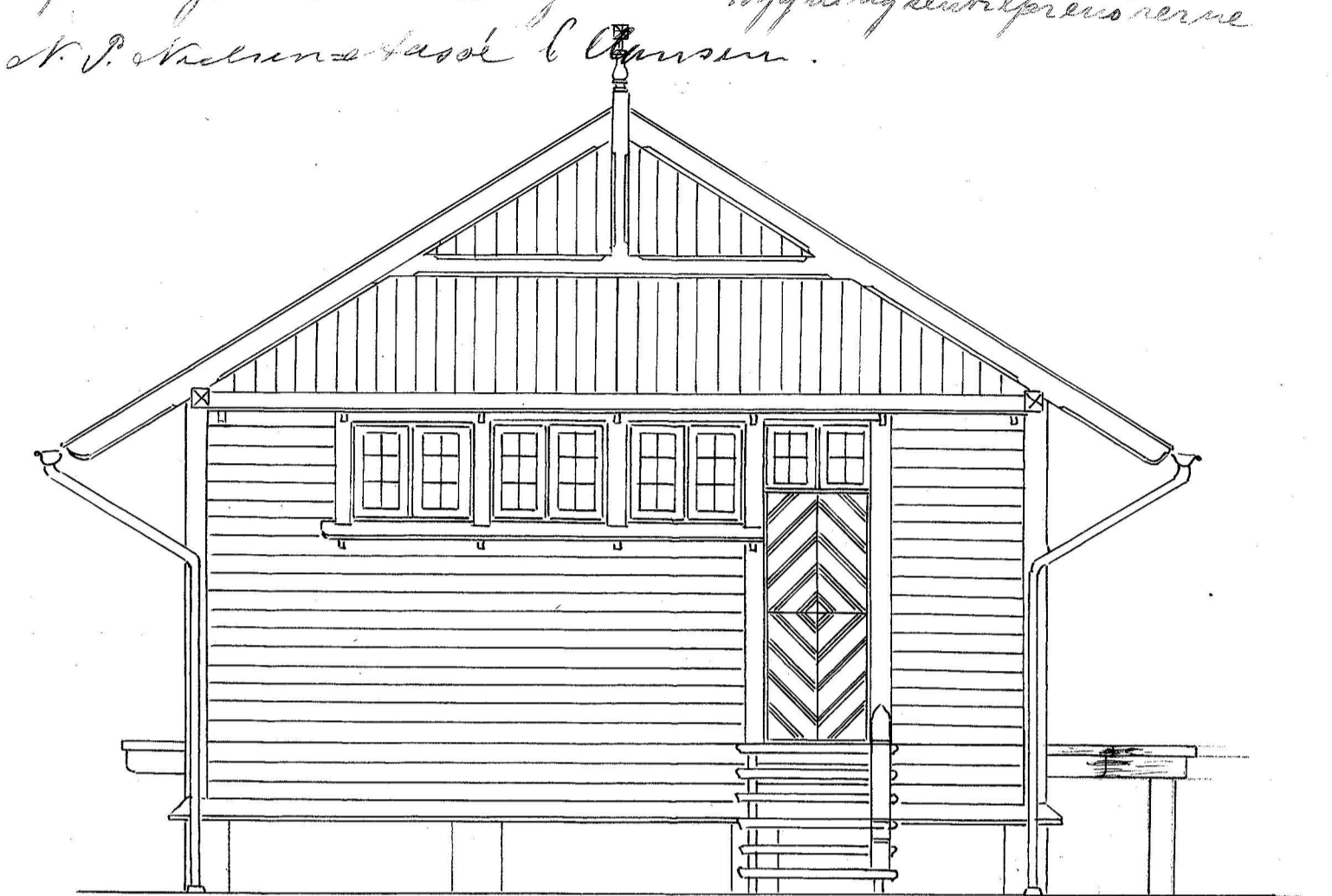
Rekviser med de per Tegningen angivne Røddeler til Kontrakt af 15 Juni 1910
 mellem Bevillingsskriveren for Langelandsbanen og Bygningentreprisen
 A. Milow og P. Mellemgaard & Clausen.



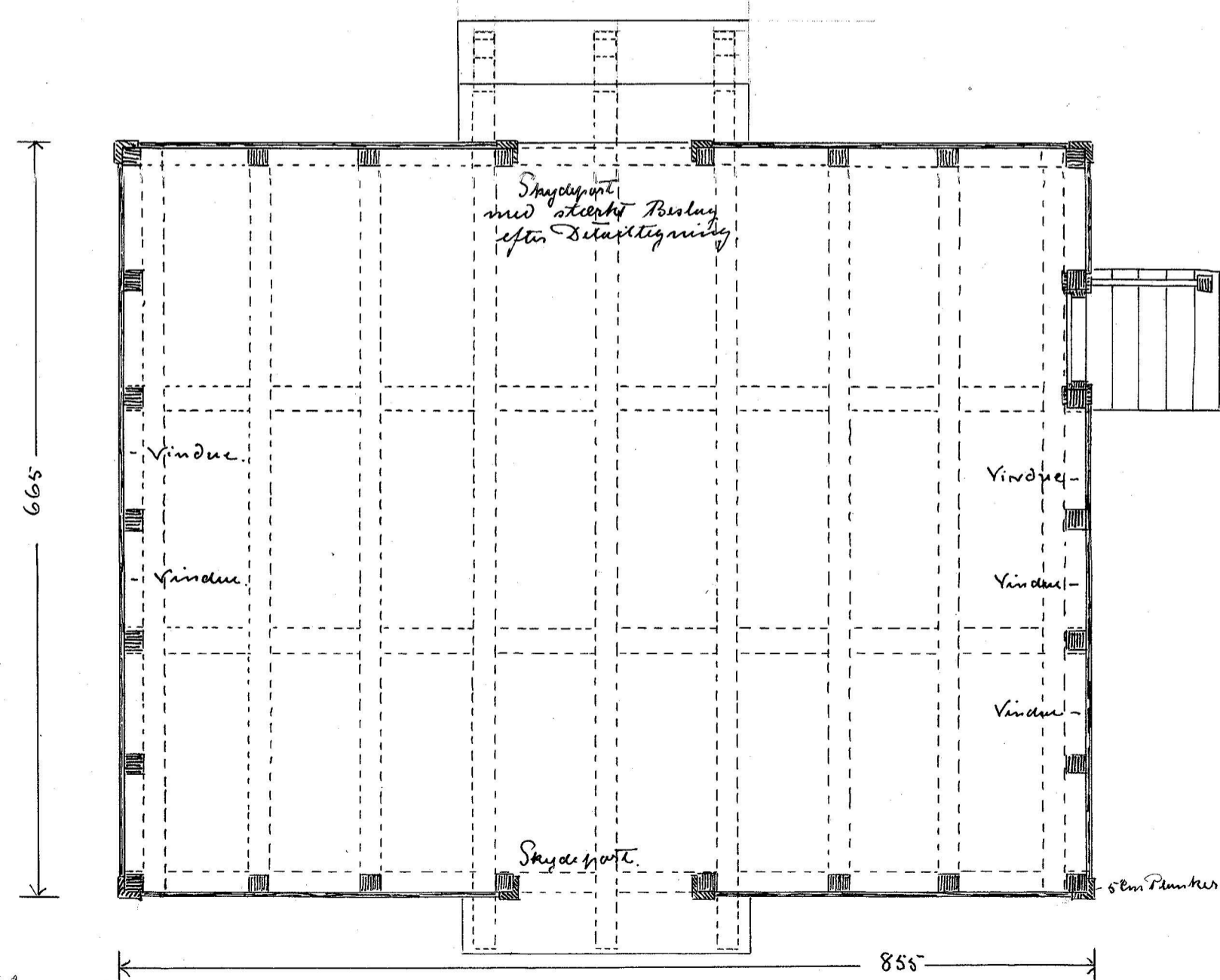
SIDE.



LANGSNIT.



GAUL.

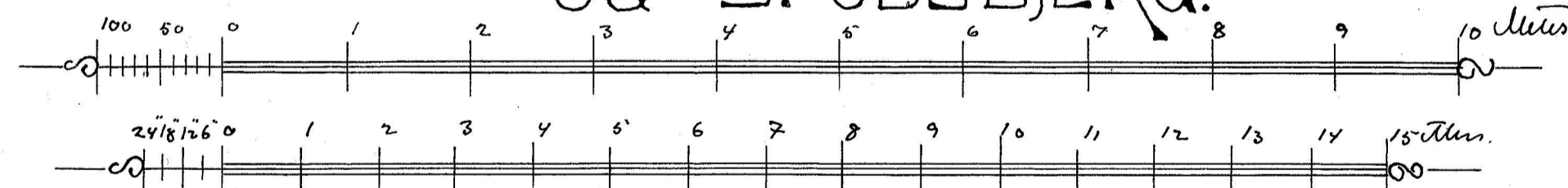


PLAN.

LANGELANDSBANEN.

VAREHUS.

TIL STATIONEN BAGENKOP
 OG SPODSBJERG.

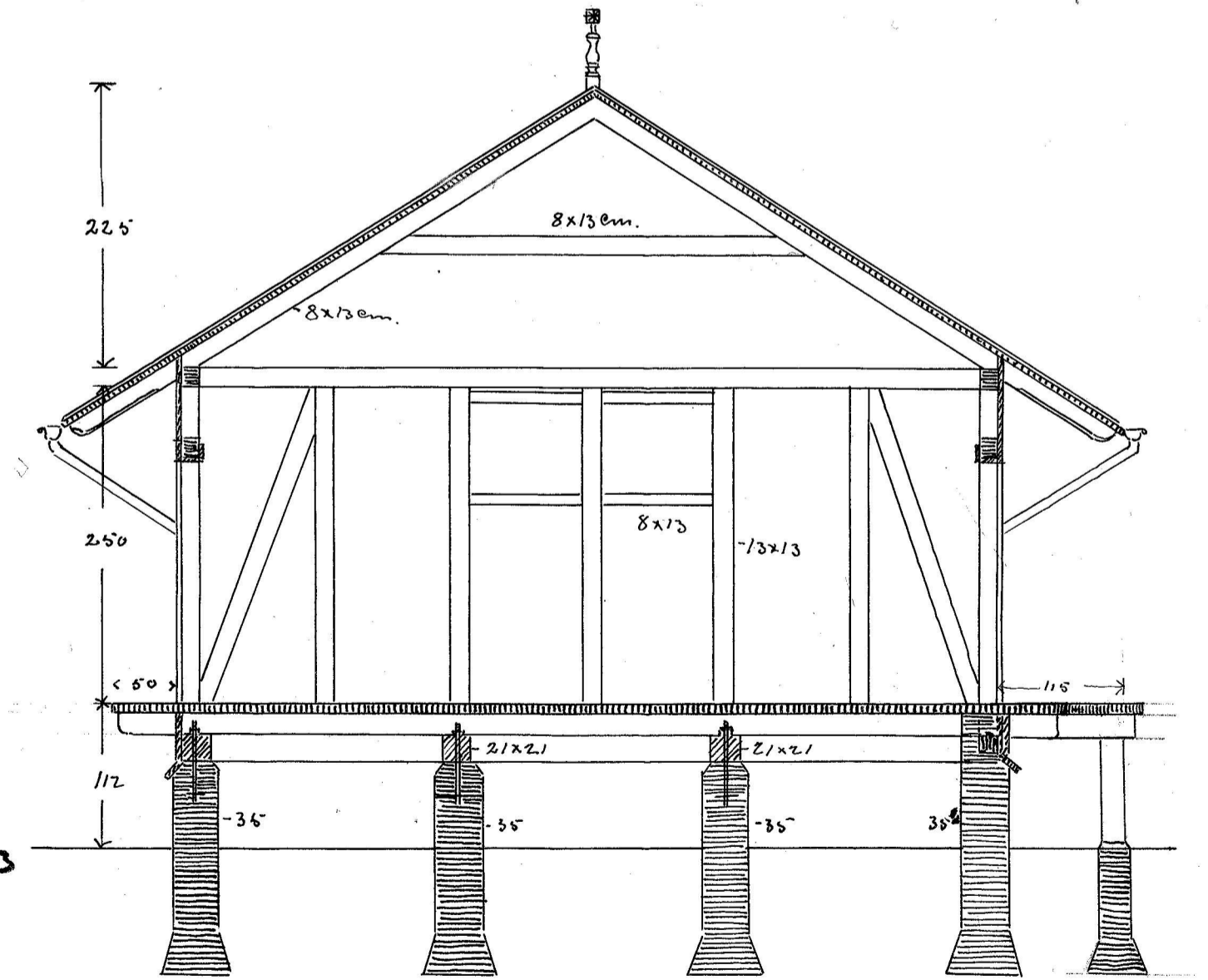


De punktstrukturlinier er i cm.

København i April 1910.

HEISE & MØLLER
 ARKITEKTER
 VODROFFSVEJ 14 - 15. TELE. VESTER 1174.

JS/DMJK 7 348 T 023



SNIT.