

LANGELANDSBANEN.

STATIONEN LINDELSE.

Plan over med de fem Tegninger angaaende Stationen til Contract af 5 Juni 1910 mellem
Bygningsselskabet for Langelandsbanen og Bygningens Trep. revideret.

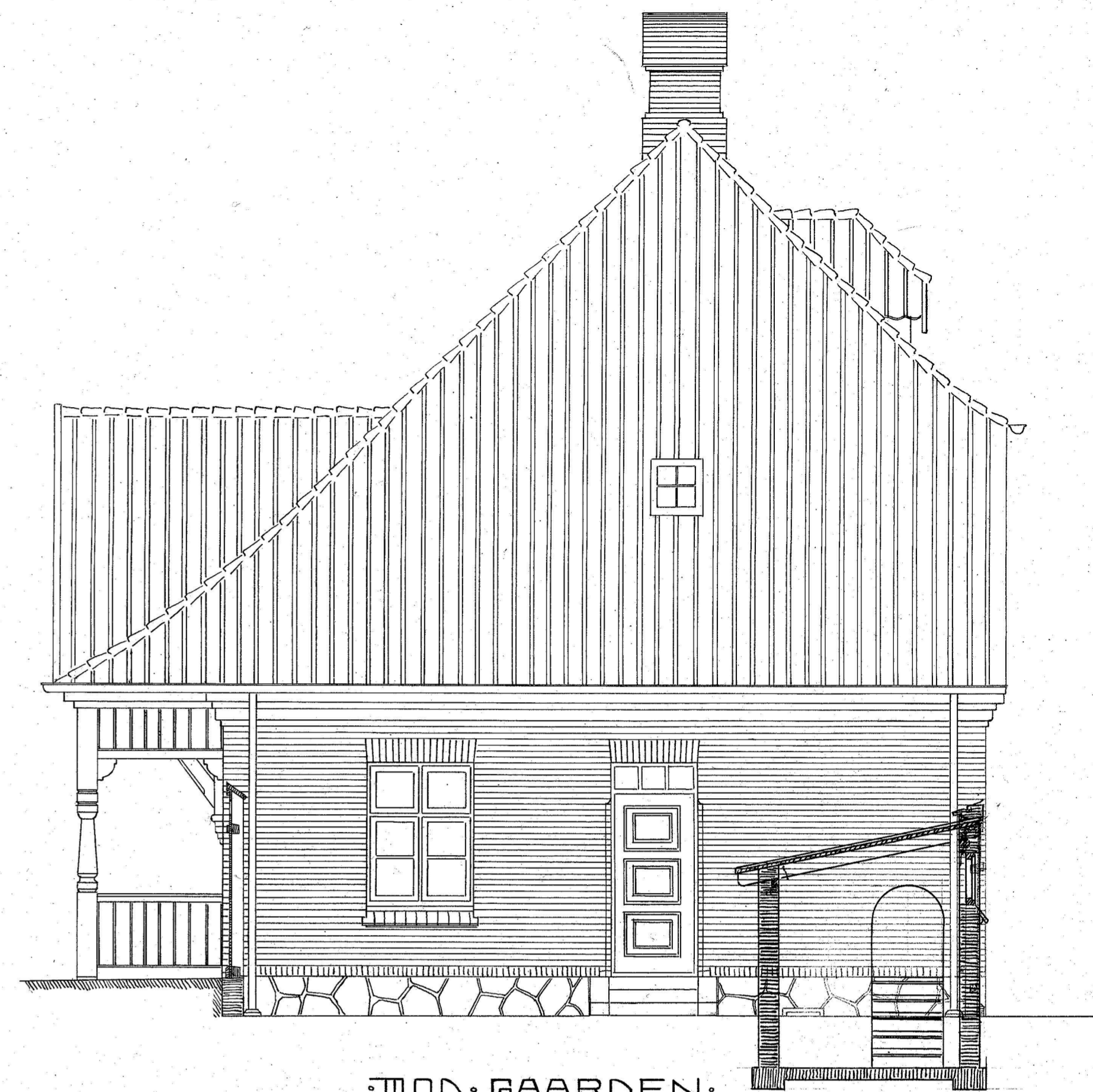
Helge Møller

Skilum

J. Park



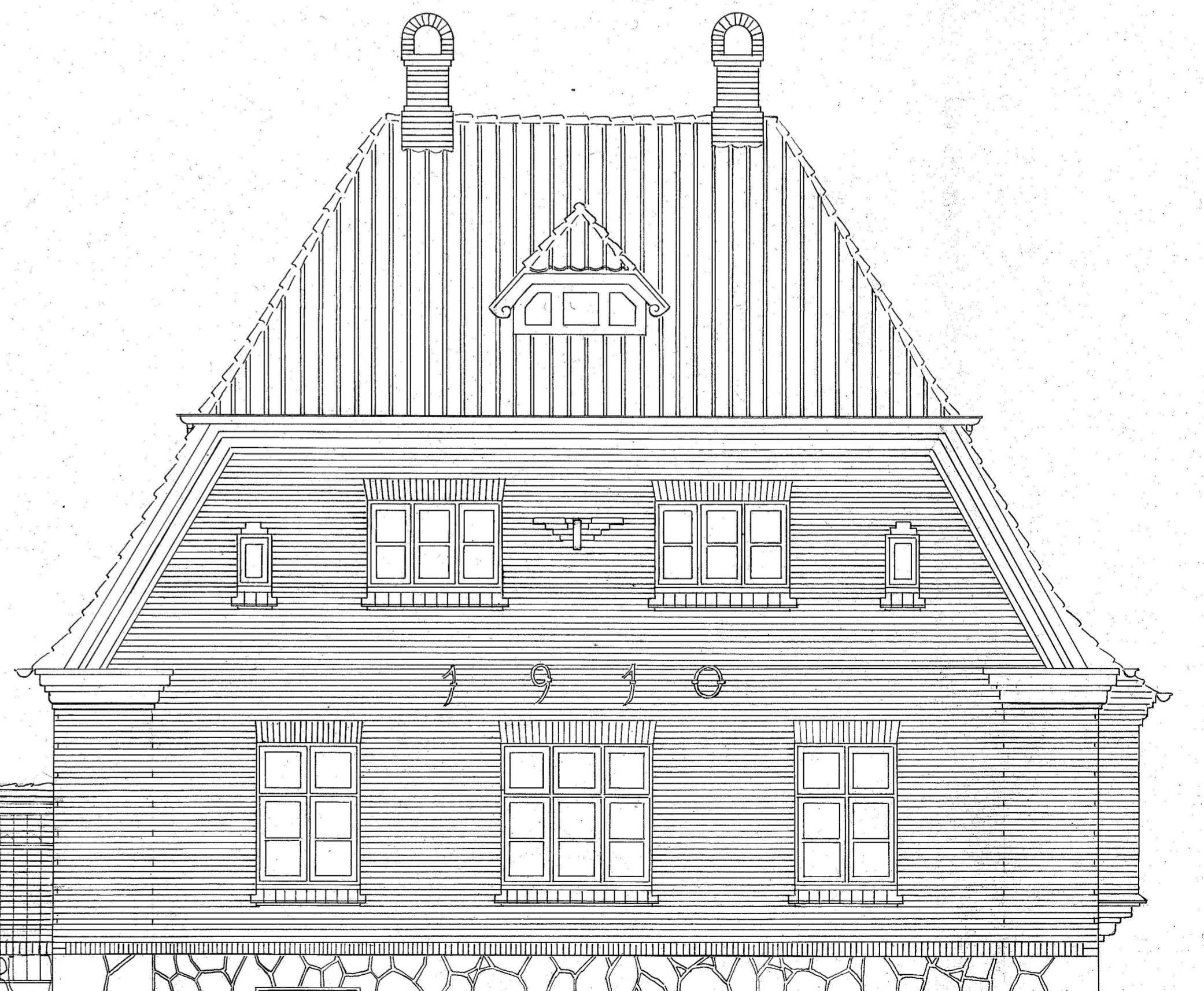
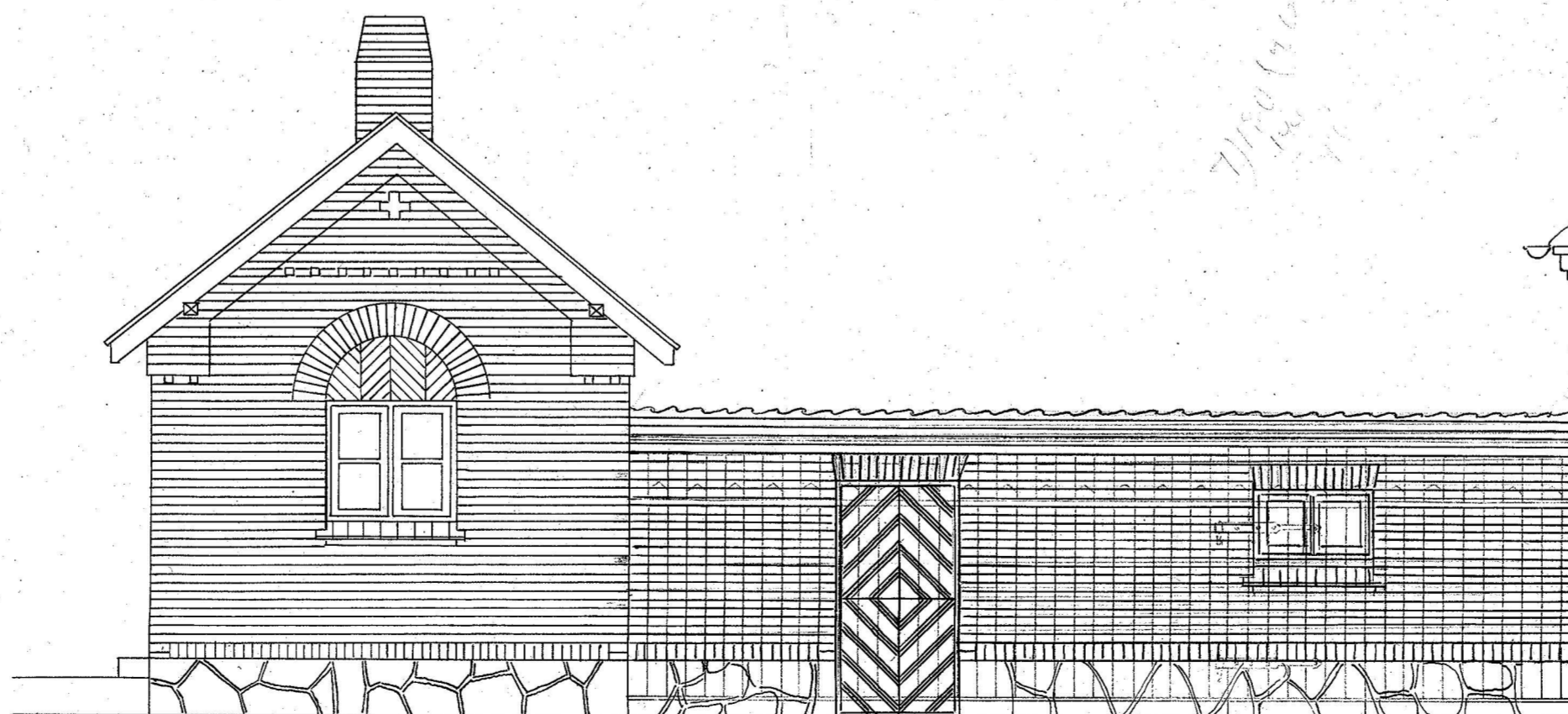
MOD PERRON.



MOD GAARDEN.



GAVL.



MOD VEJEN.

Byggetid i Maaned 1910.

