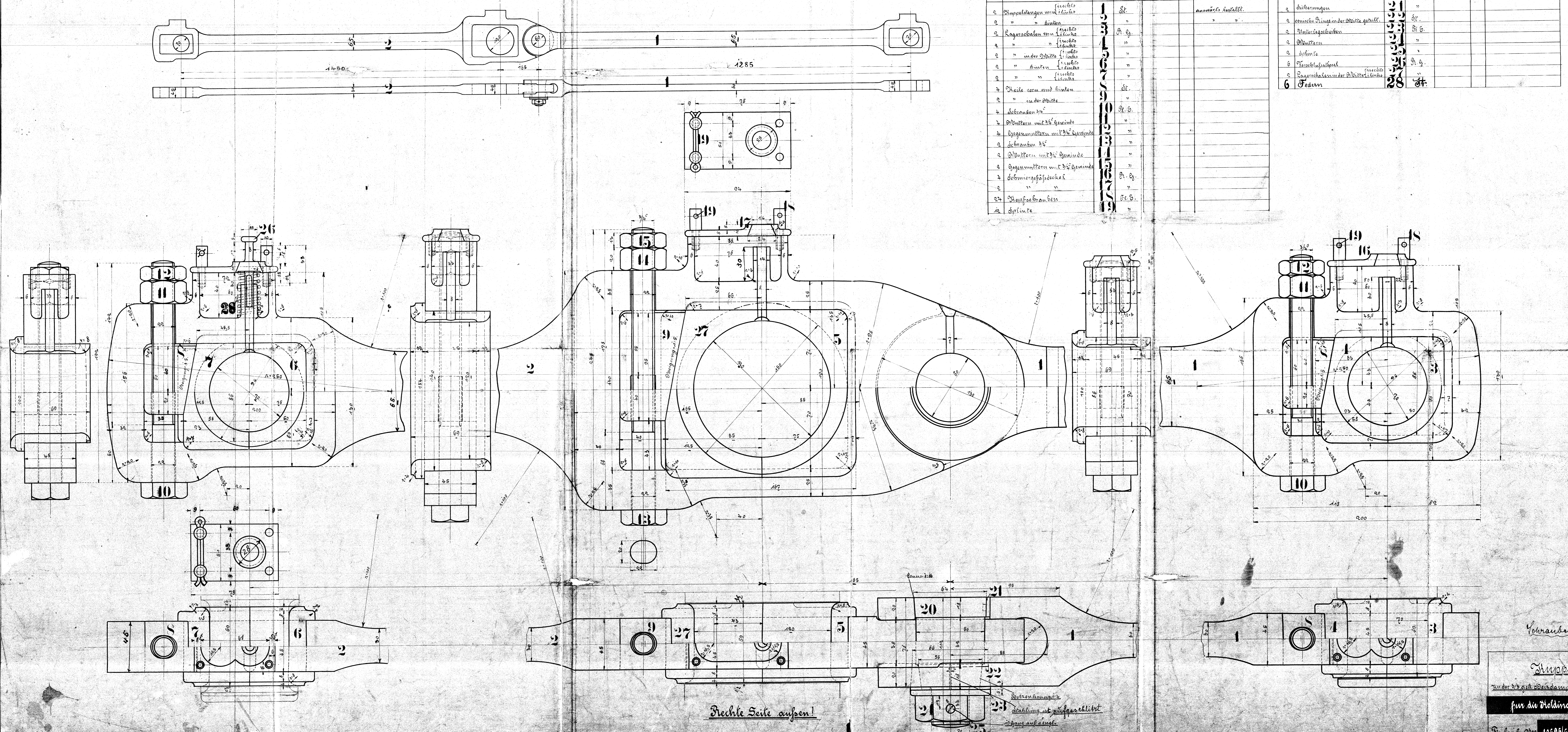


Ausführung für eine Lokomotive.			Material-Bestellung für eine Lok.		Stückzahl	Benennung	Nummer	Material	Benennung	Stückzahl	Dimensionen und Details zeichnen
1	Stückzahl	Benennung	Material	Benennung	Stückzahl	Benennung	Nummer	Material	Benennung	Stückzahl	Dimensionen und Details zeichnen
2	2	Stückelangen von Stahl	St.								
3	2	" " " " " "	St.								
4	2	Lagerrollen von Stahl	St.								
5	2	" " " " " "	St.								
6	2	" " " " " "	St.								
7	2	" " " " " "	St.								
8	2	" " " " " "	St.								
9	2	" " " " " "	St.								
10	2	" " " " " "	St.								
11	2	" " " " " "	St.								
12	2	" " " " " "	St.								
13	2	" " " " " "	St.								
14	2	" " " " " "	St.								
15	2	" " " " " "	St.								
16	2	" " " " " "	St.								
17	2	" " " " " "	St.								
18	2	" " " " " "	St.								
19	2	" " " " " "	St.								
20	2	" " " " " "	St.								
21	2	" " " " " "	St.								
22	2	" " " " " "	St.								
23	2	" " " " " "	St.								
24	2	" " " " " "	St.								
25	2	" " " " " "	St.								
26	2	" " " " " "	St.								
27	2	" " " " " "	St.								
28	2	" " " " " "	St.								
29	2	" " " " " "	St.								
30	2	" " " " " "	St.								
31	2	" " " " " "	St.								
32	2	" " " " " "	St.								
33	2	" " " " " "	St.								
34	2	" " " " " "	St.								
35	2	" " " " " "	St.								
36	2	" " " " " "	St.								
37	2	" " " " " "	St.								
38	2	" " " " " "	St.								
39	2	" " " " " "	St.								
40	2	" " " " " "	St.								
41	2	" " " " " "	St.								
42	2	" " " " " "	St.								
43	2	" " " " " "	St.								
44	2	" " " " " "	St.								
45	2	" " " " " "	St.								
46	2	" " " " " "	St.								
47	2	" " " " " "	St.								
48	2	" " " " " "	St.								
49	2	" " " " " "	St.								
50	2	" " " " " "	St.								



Schrauben u. Muttern u. dänischer Tabelle.
 Stempelstangen
 für die Helsing Südbahnen, Helsing.
 Fabrik-Nr. 106956. Preis 202. 1916