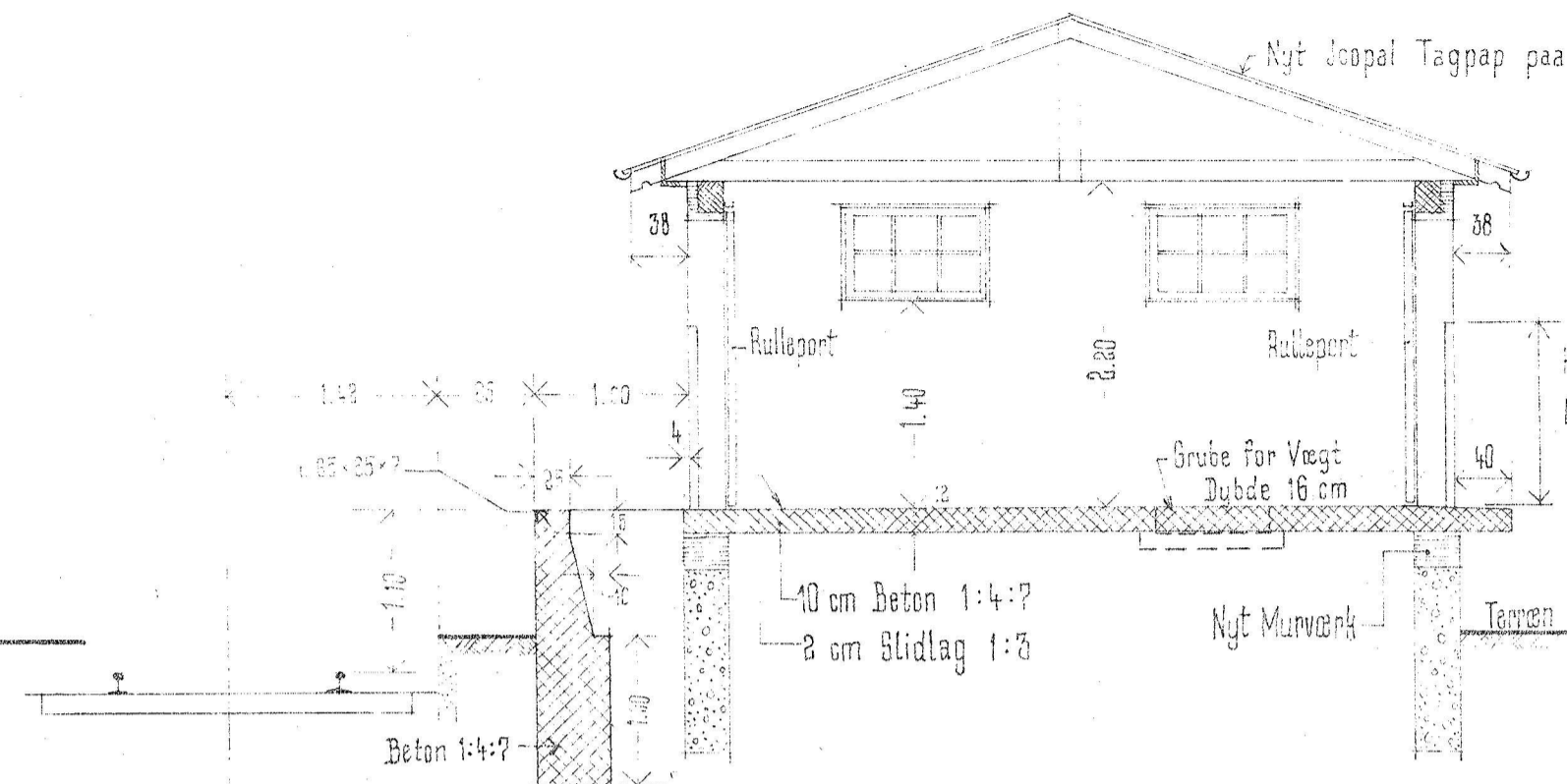
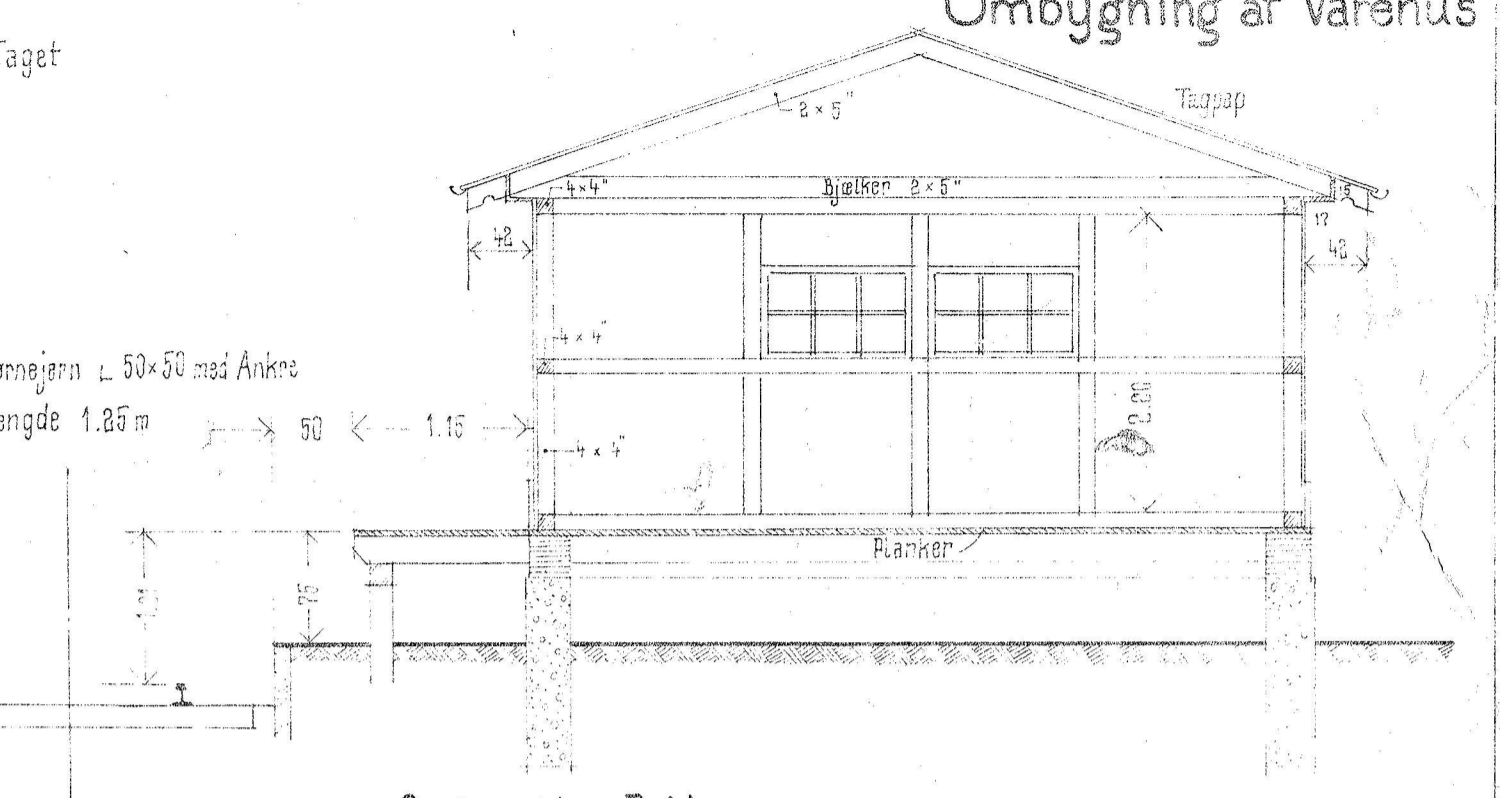


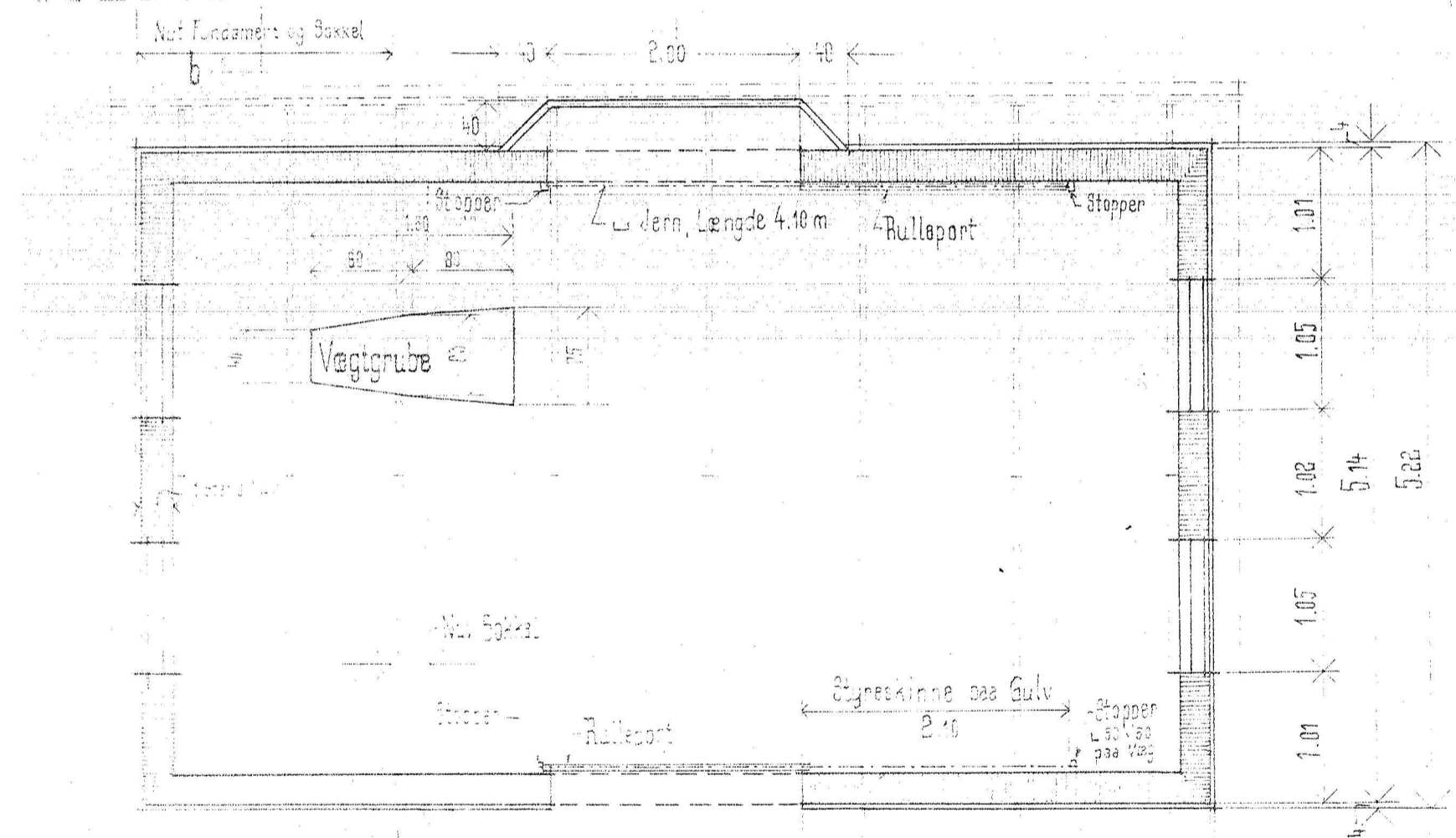
nit b-b
Facade mod Sporet — a



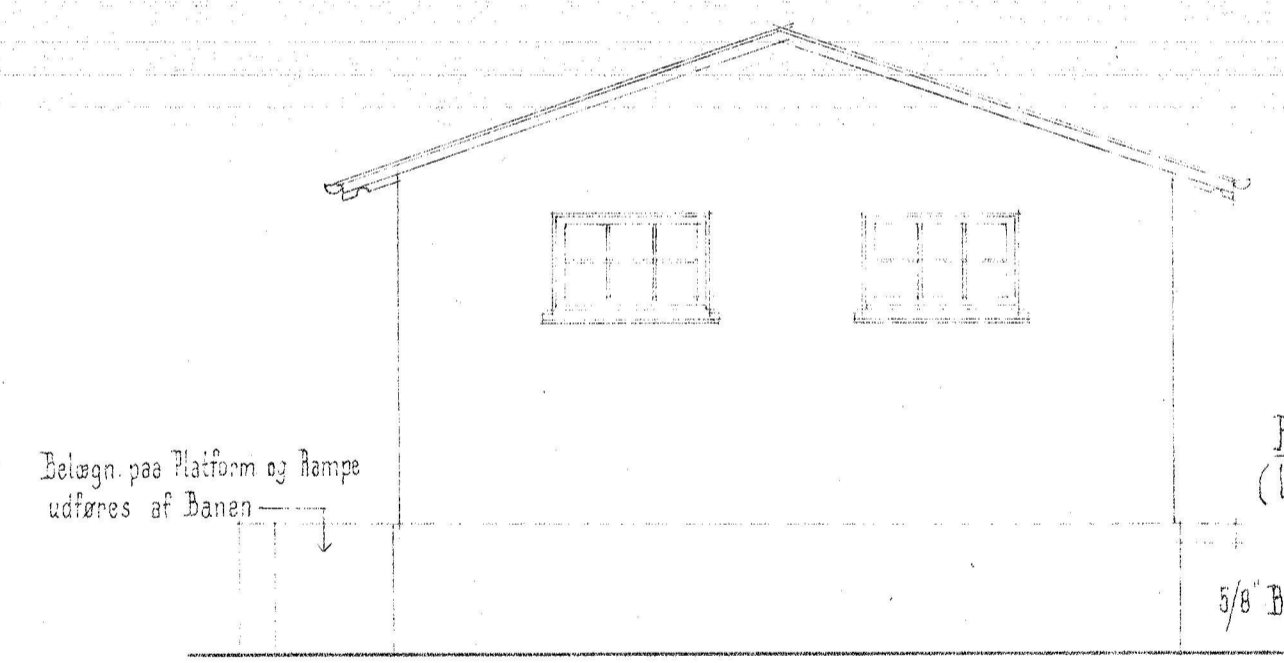
— Snit a-a —



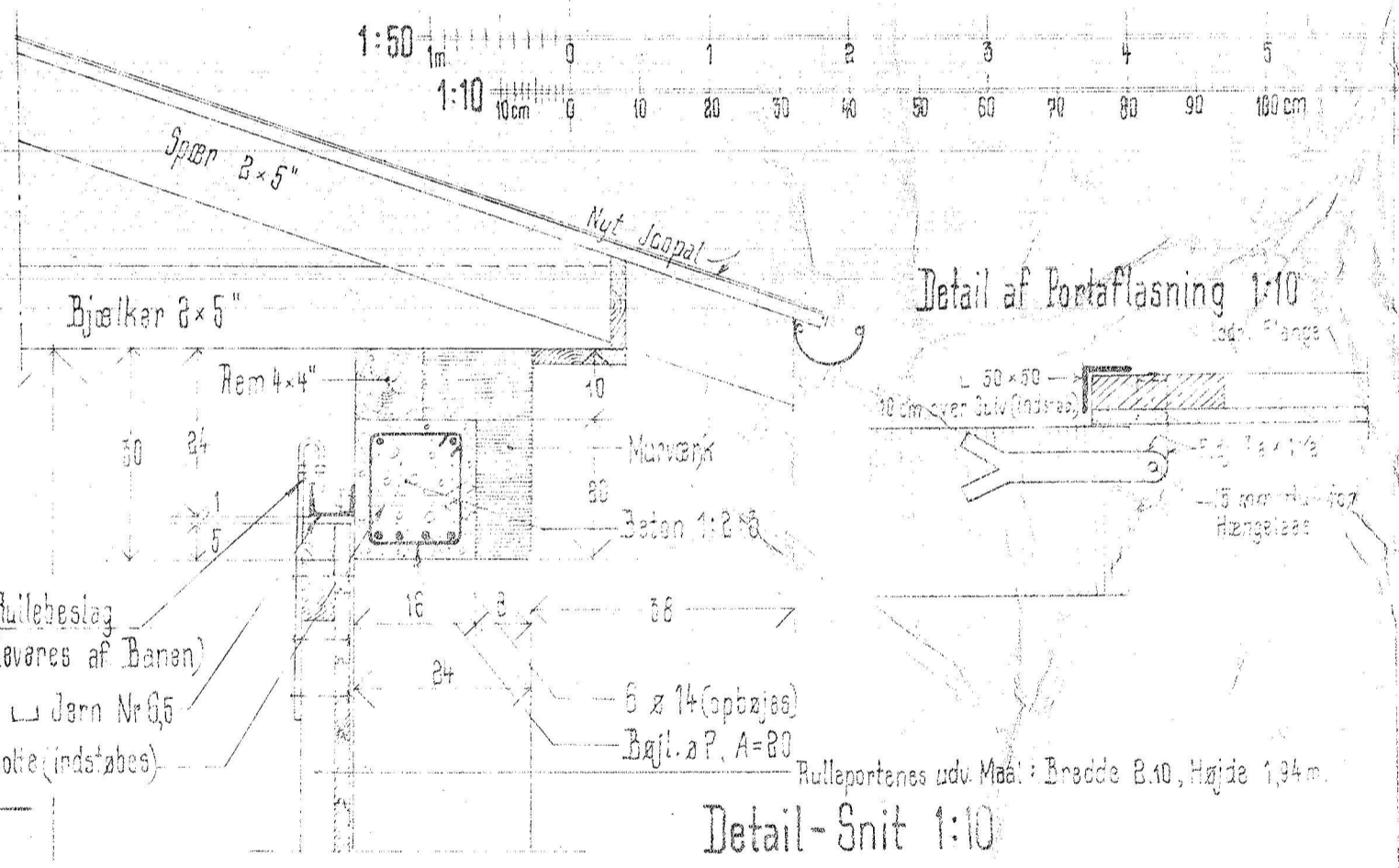
— Snit i Nuv. Pakhus —



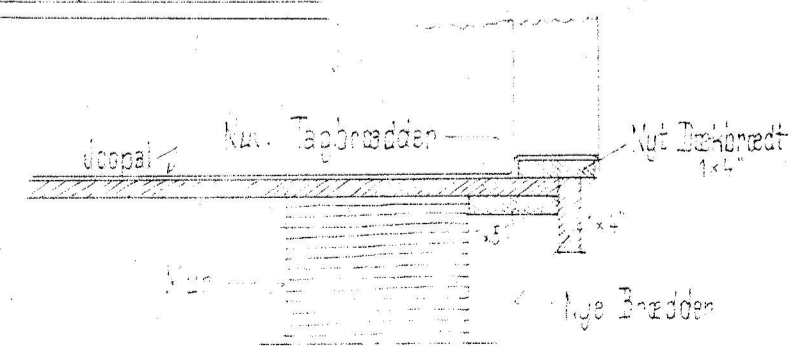
— Plan —



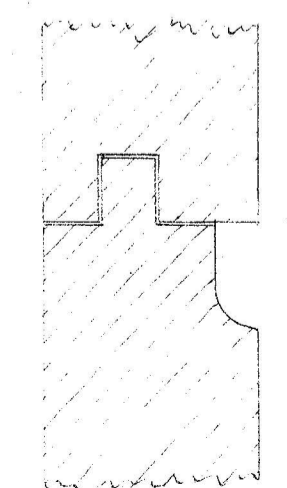
— Gavl —



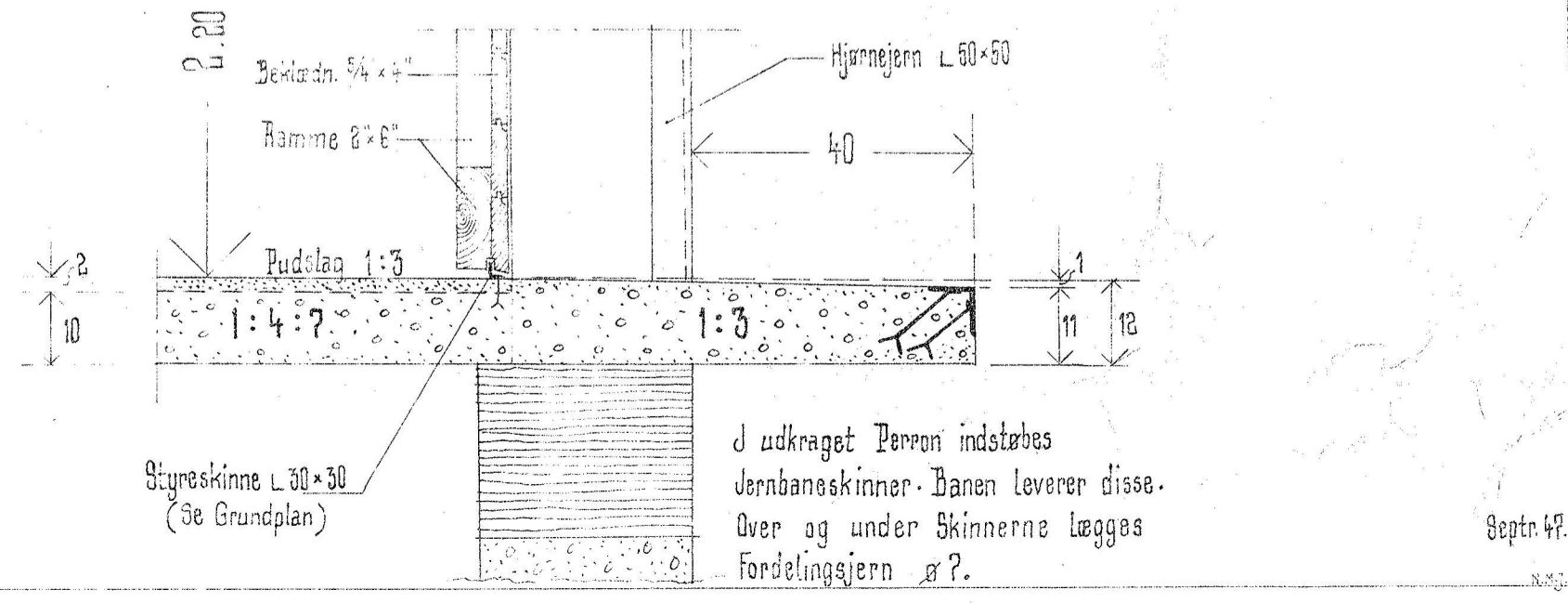
Detail-Snit 1:10



Detail af Tagudhæng ved Gavl 1:10



Detail af Port-Beklædning 1:1



J udkræget Perron indstøbes
Jernbaneskinne. Banen leverer disse.
Over og under Skinnerne lægges
fordelingsjern ø?