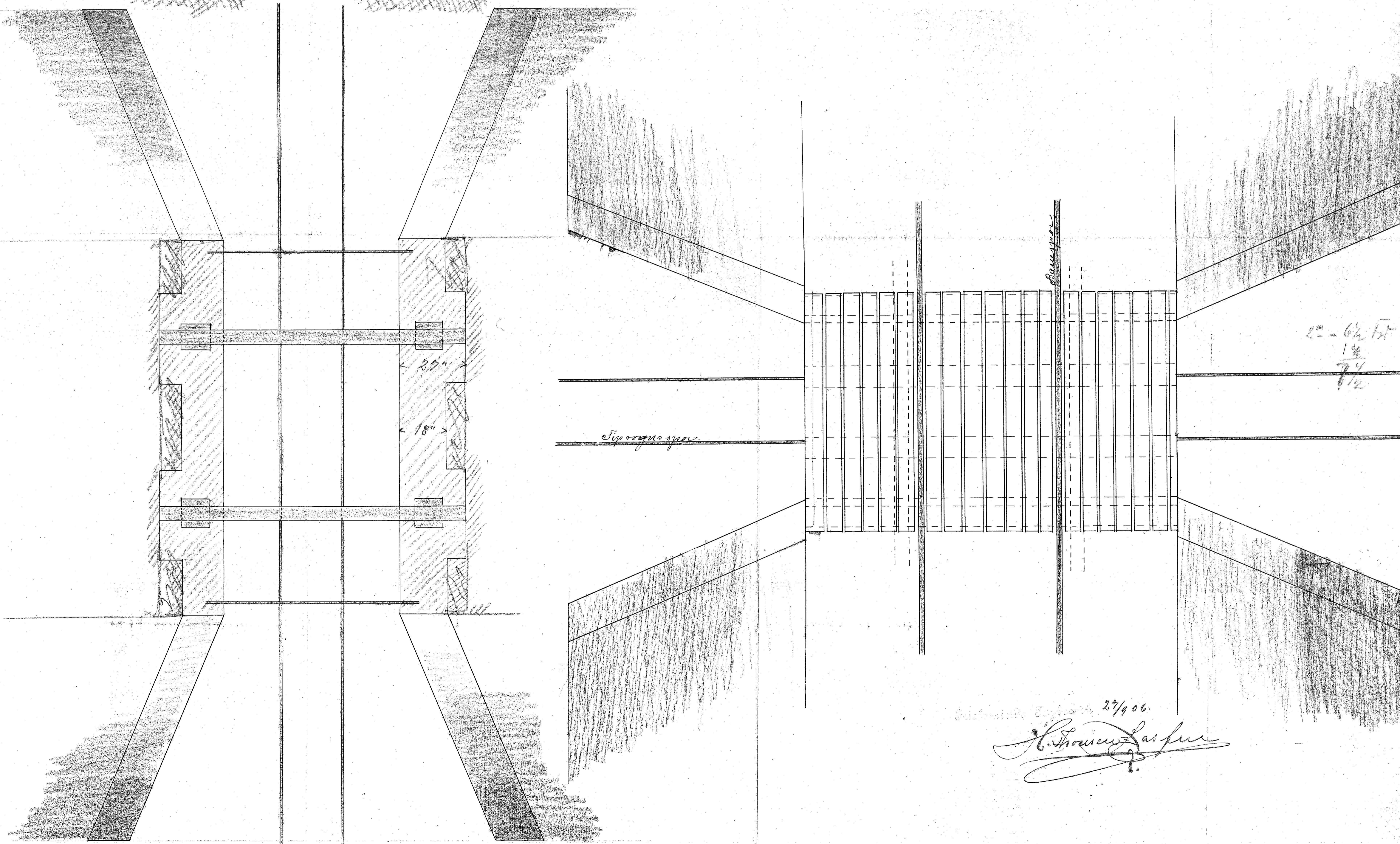
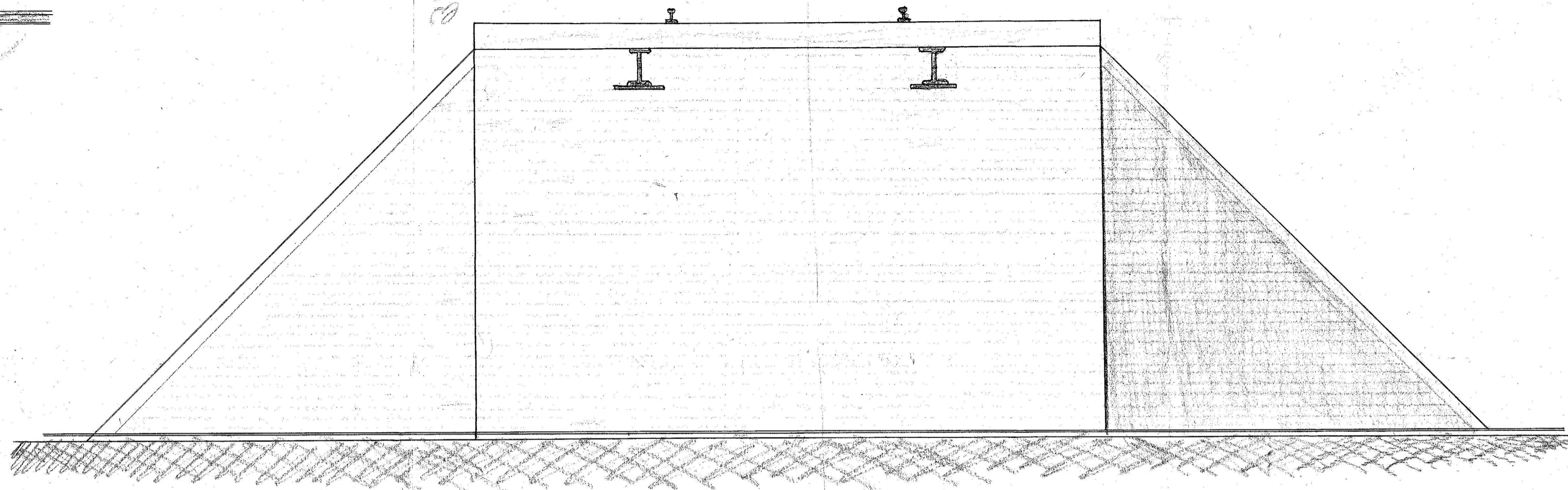
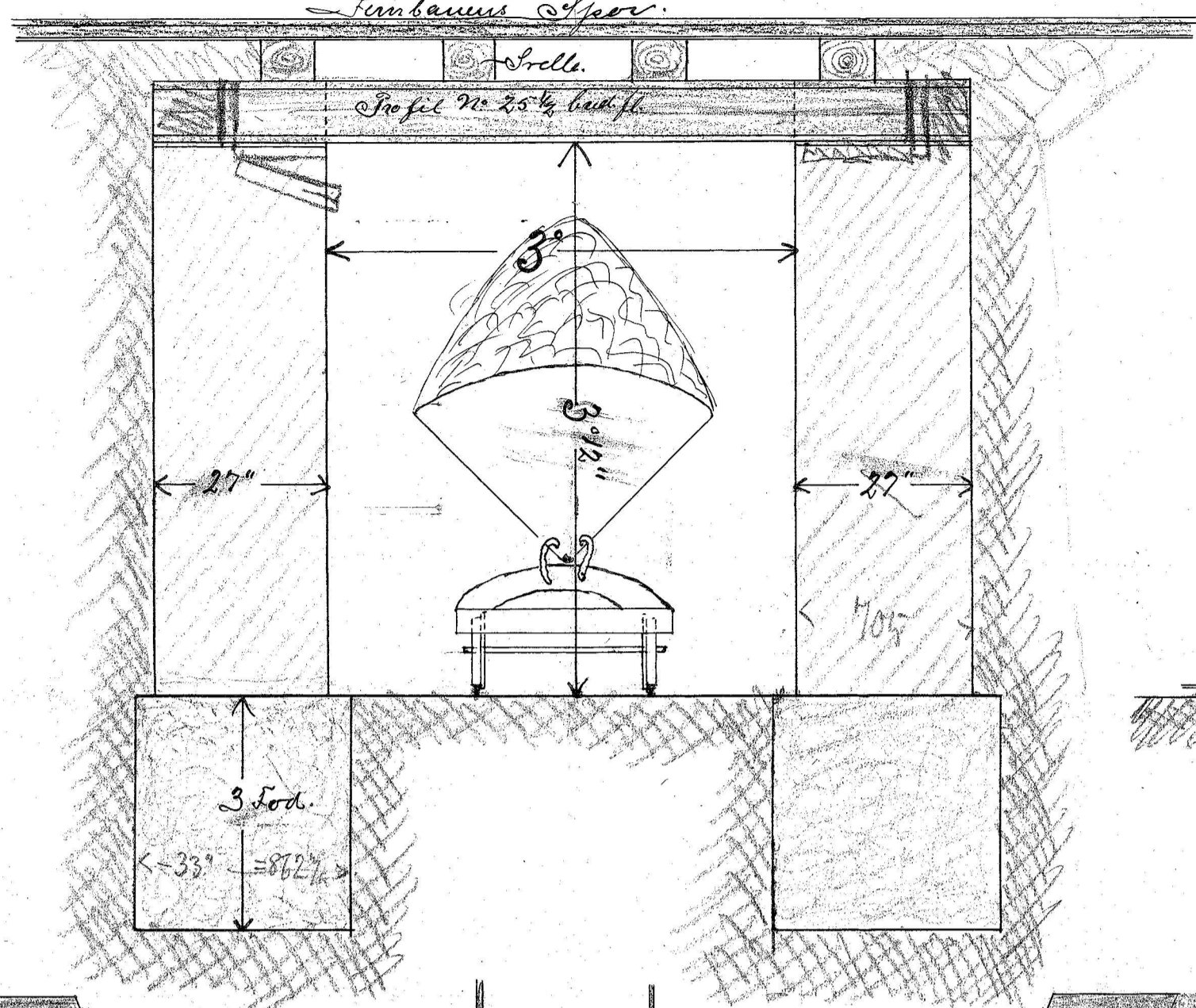
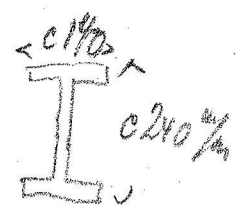


Projektent Tunnel under Jernbanens Spor ved Juleminde Tjylbræke

Maalstok 1" = 1 Aln.

0:1:24

Jernbanens Spor



$c^m = 6\frac{1}{2} \text{ Ft}$   
 $1\frac{1}{2}$   
 $7\frac{1}{2}$

Indsendt til Bygning 27/9 06.  
*H. Thomsen*

*Carl Jensen*