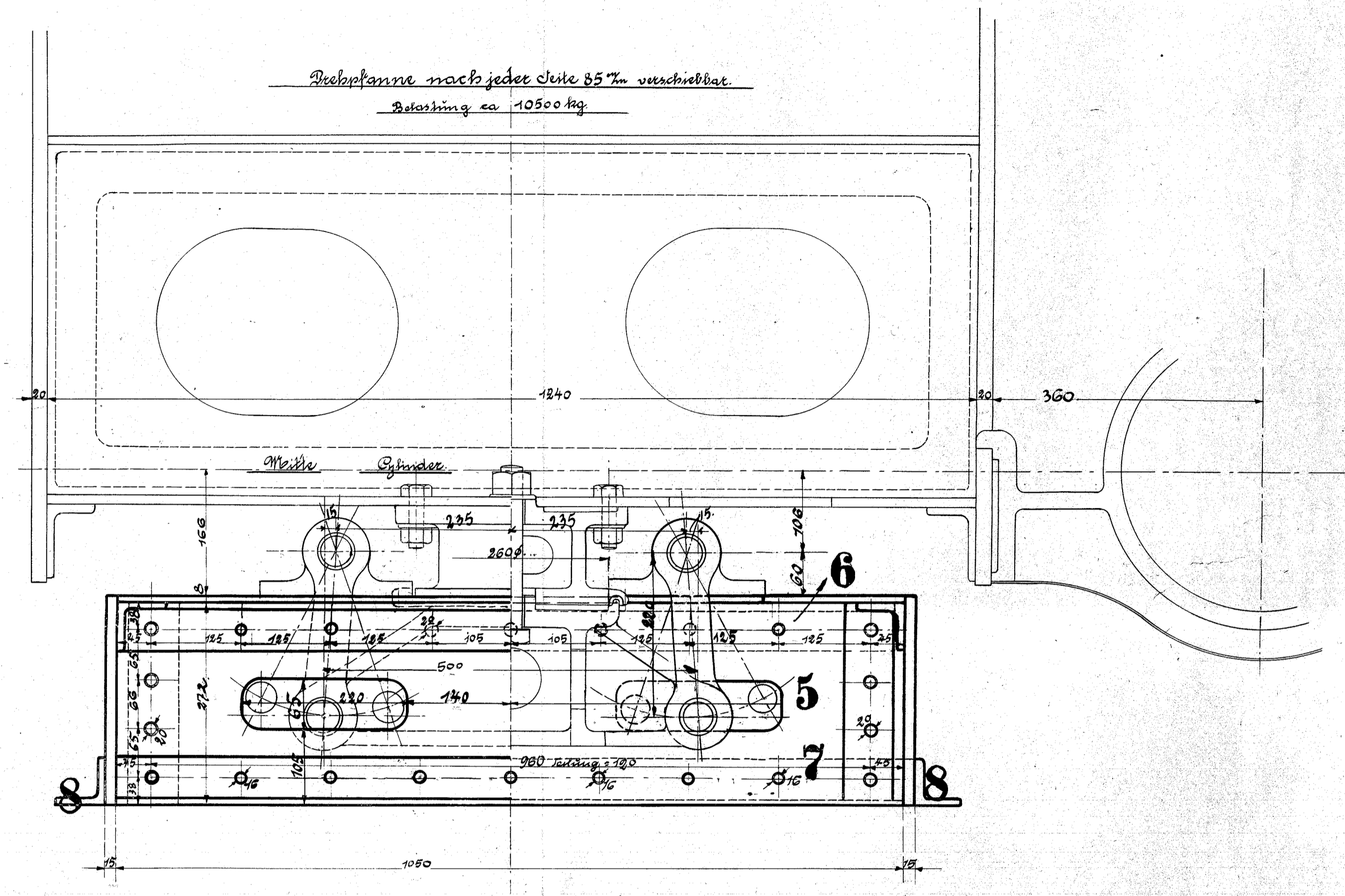
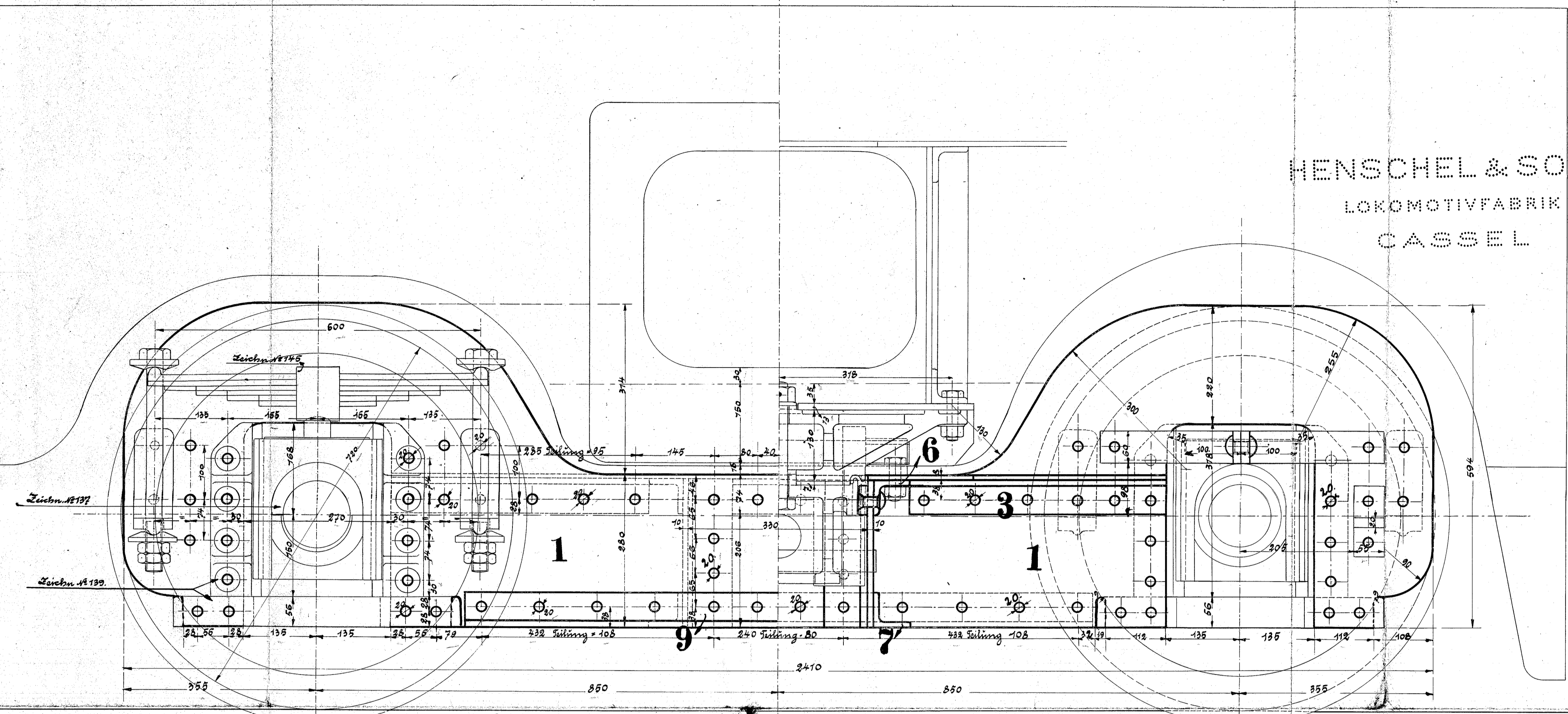


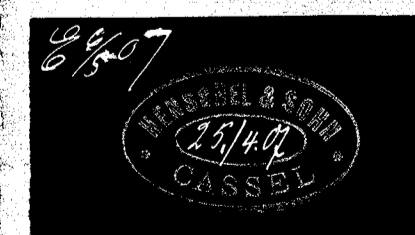
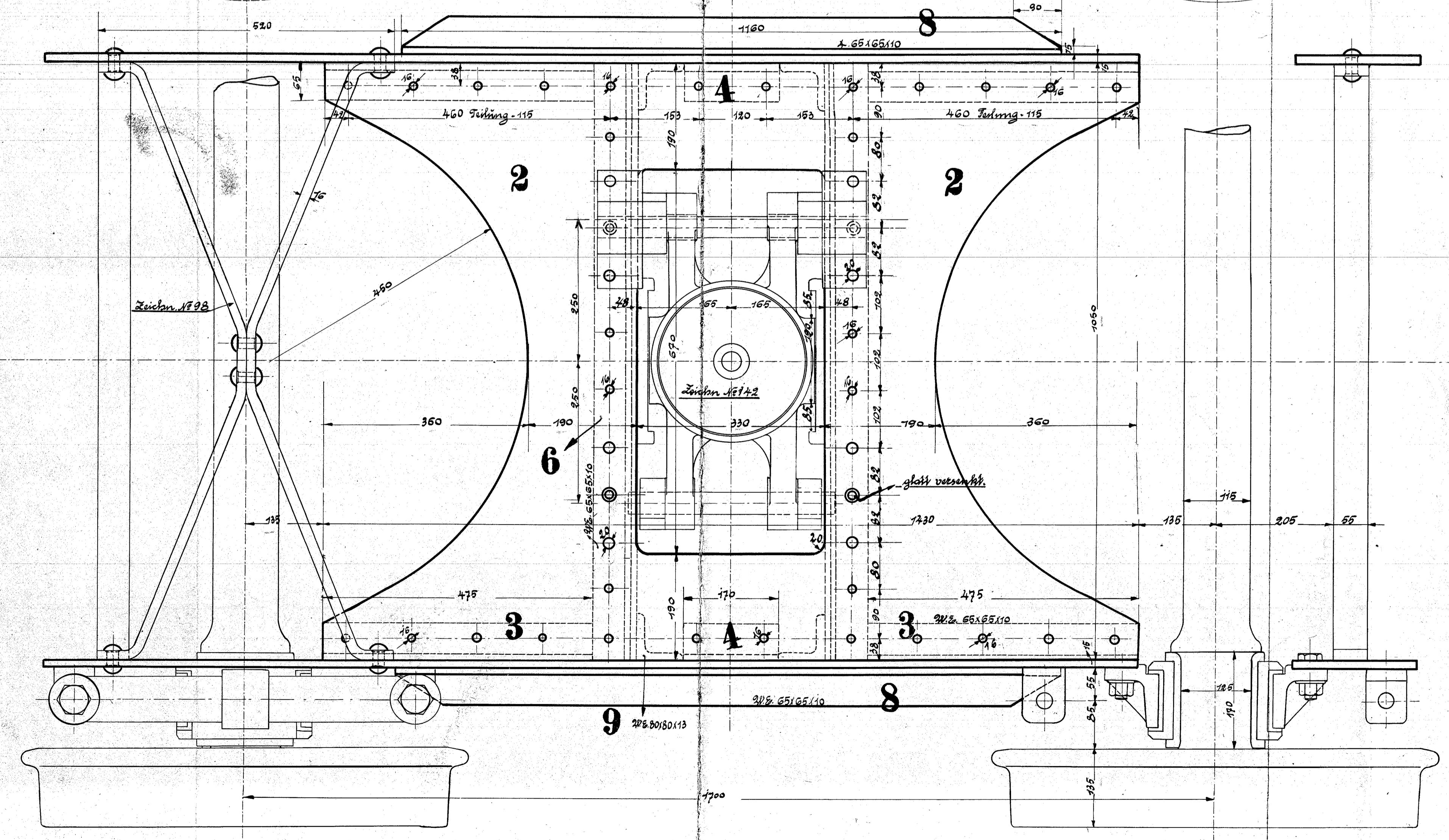
Approved and Sgn. of 14 Mai 1907

HENSCHEL & SOHN
LOKOMOTIVFABRIK
CASSEL



Ausführung für Lokomotive.

| Stückzahl | Benennung | Nummer | Material | Bemerkung | Bestellnum. | Modellbeschr. |
|-----------|-----------------------------|--------|----------|-----------|-------------|---------------|
| 2 | Rahmenbleche | 1 | | | It. 144 | |
| 1 | rechteckiges Feuerrohrblech | 2 | | | 220 | |
| 2 | Winkel 65165110 (2 rechts) | 3 | | | | |
| 2 | Winkel " " " | 4 | | | | |
| 2 | rechteckige Feuerrohrbleche | 5 | | | 222 | |
| 2 | obere Winkel 65165110 | 6 | | | | |
| 2 | untere Winkel " " " | 7 | | | | |
| 2 | Winkel am Rahmen | 8 | | | | |
| 4 | Winkel 60160113 | 9 | | | | |



Gribskovbanen

Drehgestell