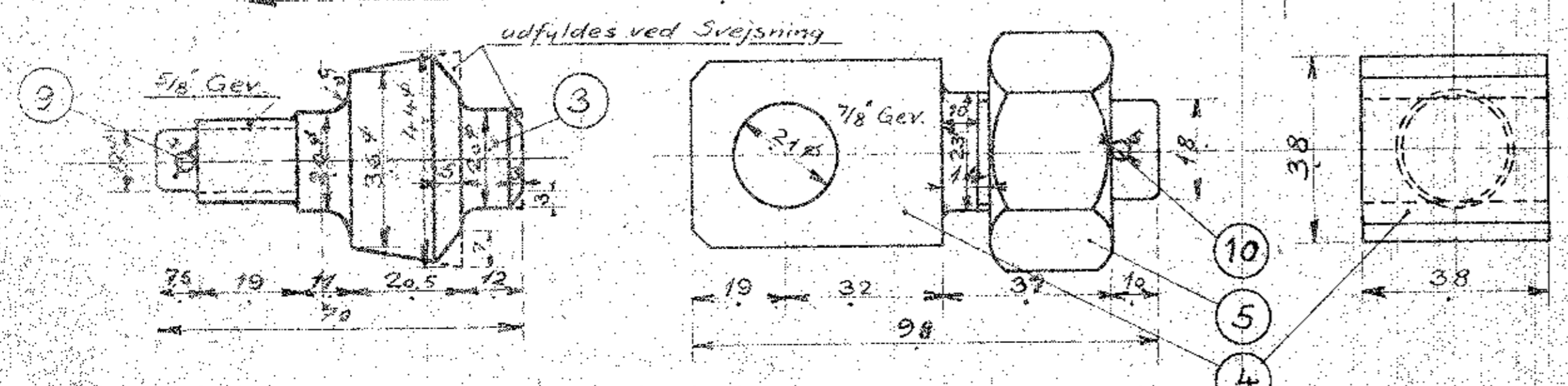
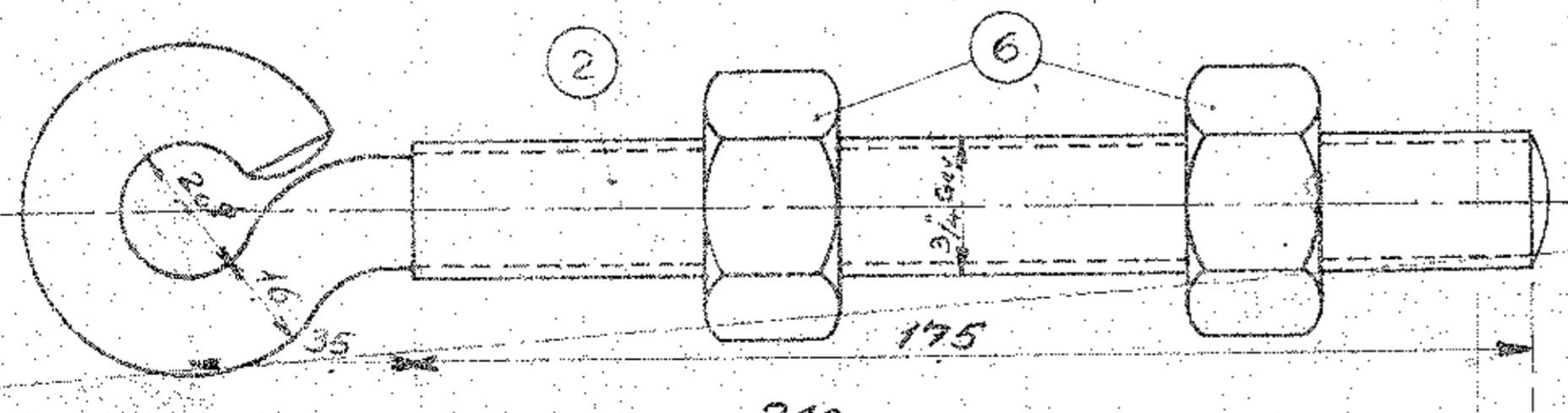
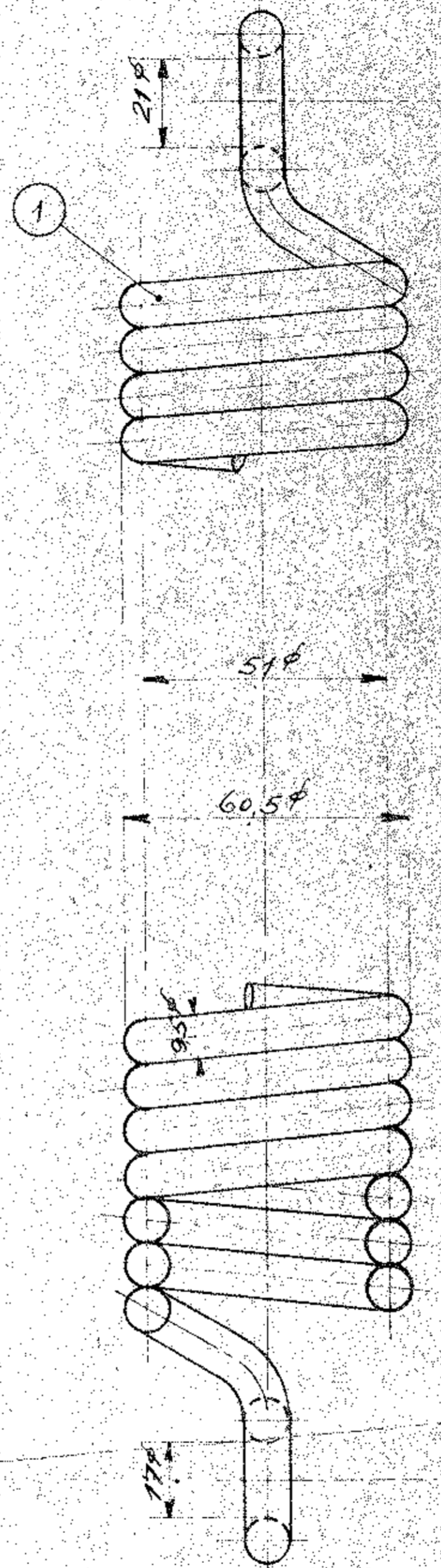
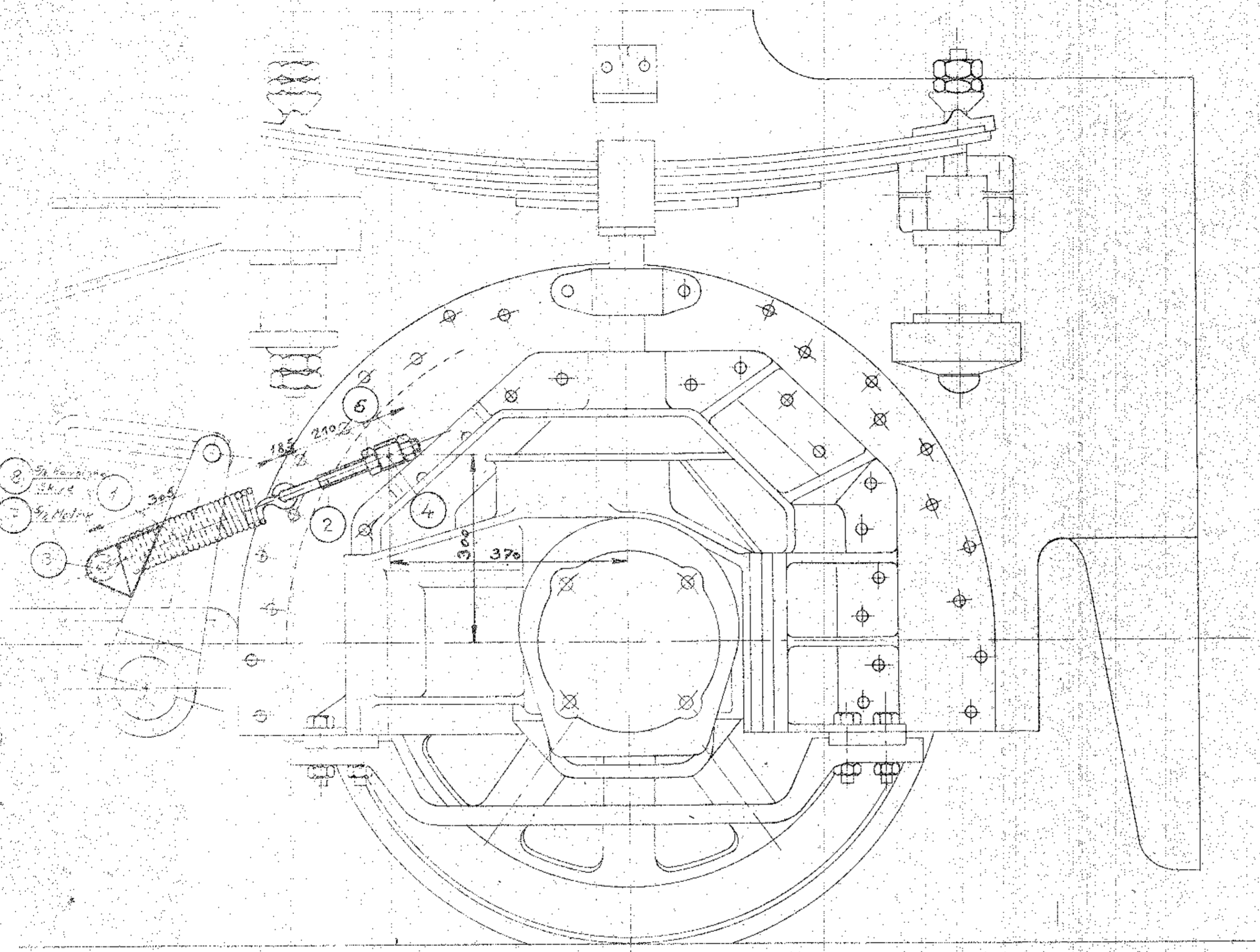


Knorr
Tegn. Nr. N 1653/60-501/2

56961			
1	1	Fjeder Vindingstæthed 51 Trækkraft 850 N	130-250
2	1	Spændebolt	130-250
3	1	Medbringertop	45-80
4	1	Øsker	38-38-110
5	1	Møtrik 7/8"	Mogas.n
6	2	3/4"	
7	1	5/8"	
8	1	Halvblank Skive 3/4"	
9	1	Split	1-30
10	1	57-40	



[Signature]
A/S FRICH'S AARHUS
 Tilbagetraksfjeder for Bremse
 Diesel-el. 410/450 HK Motorloko.
 9-60
 1:5 131L-22.39
 29-5-34 1:1
 INDEKS TIL UDSKRIFTS NR.