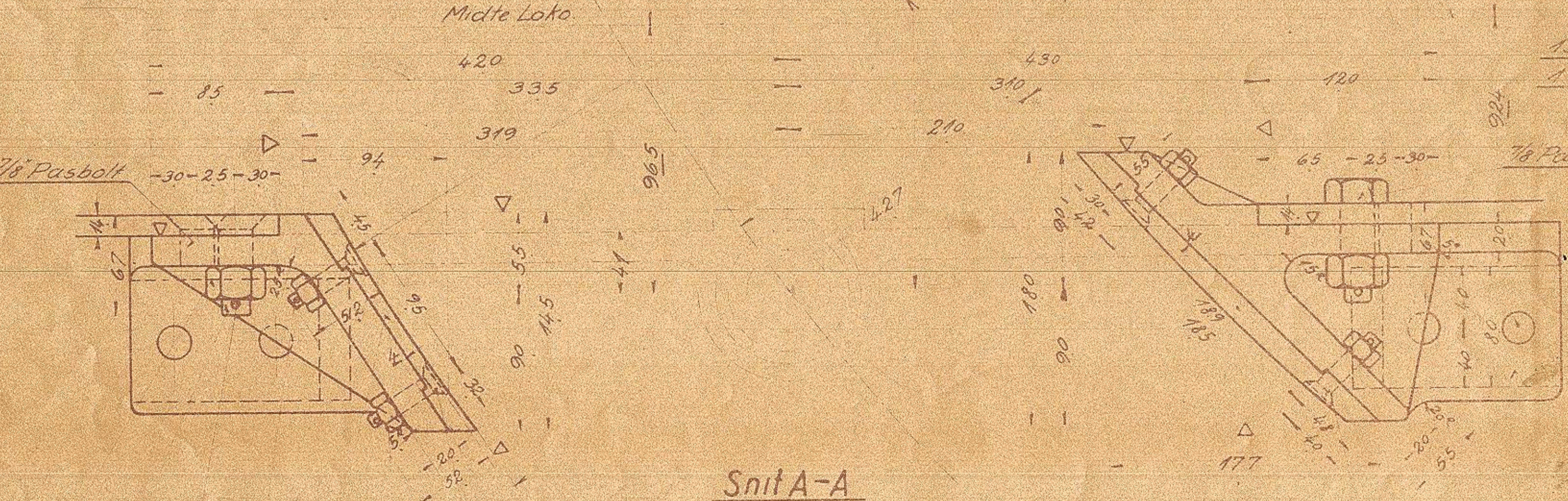
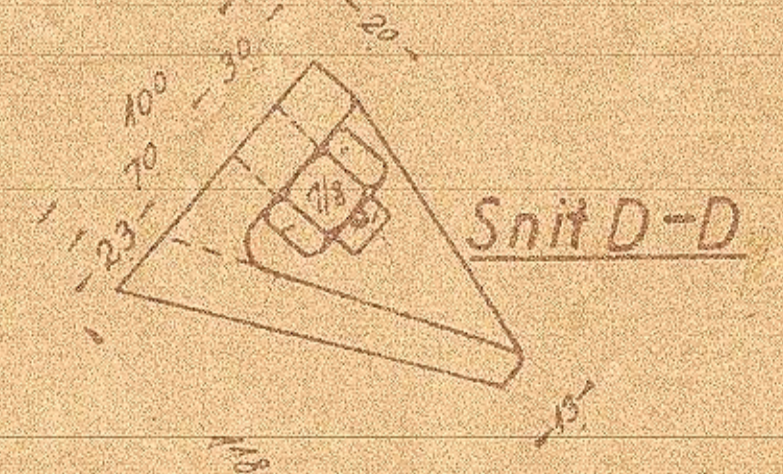
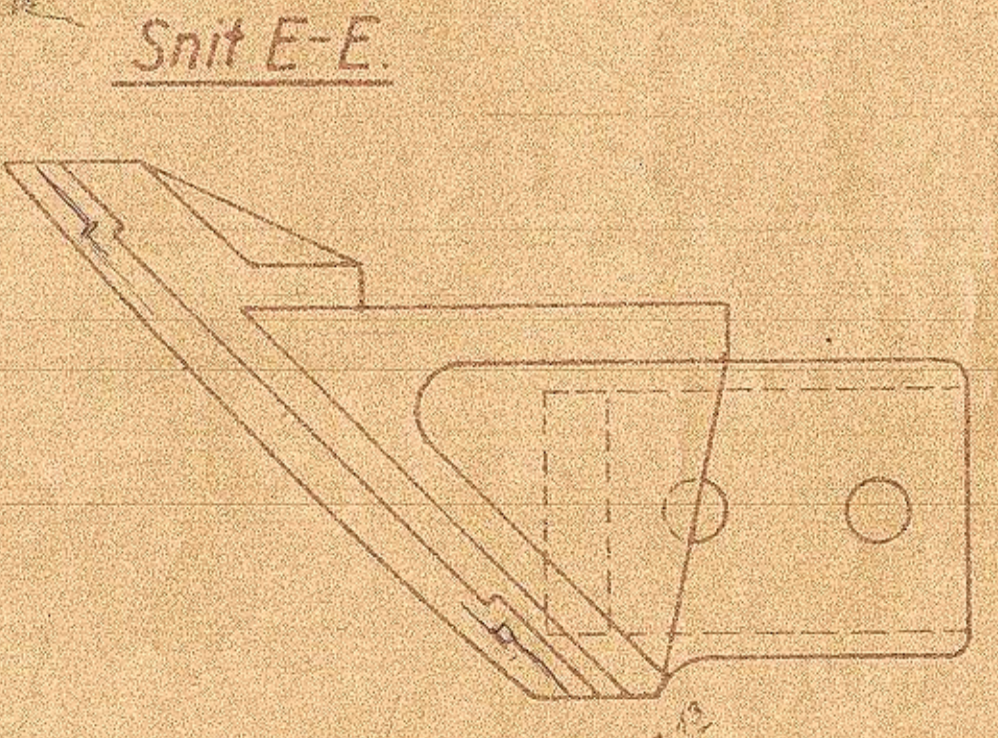
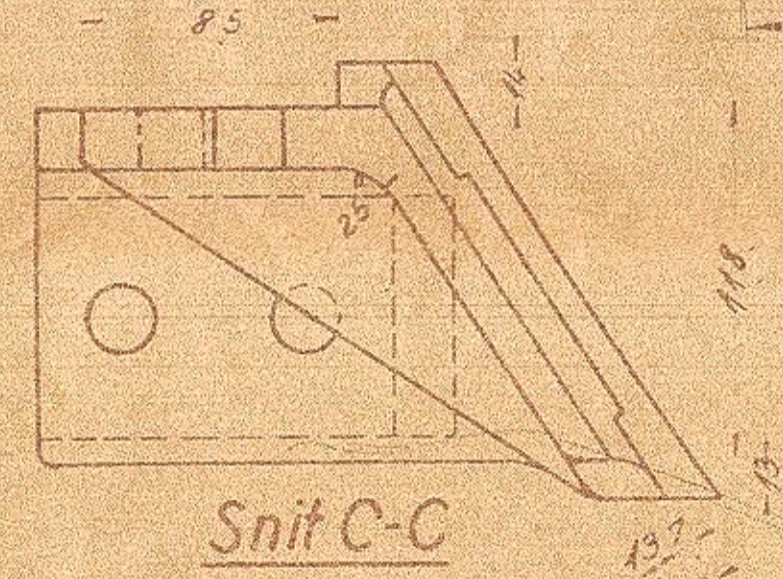
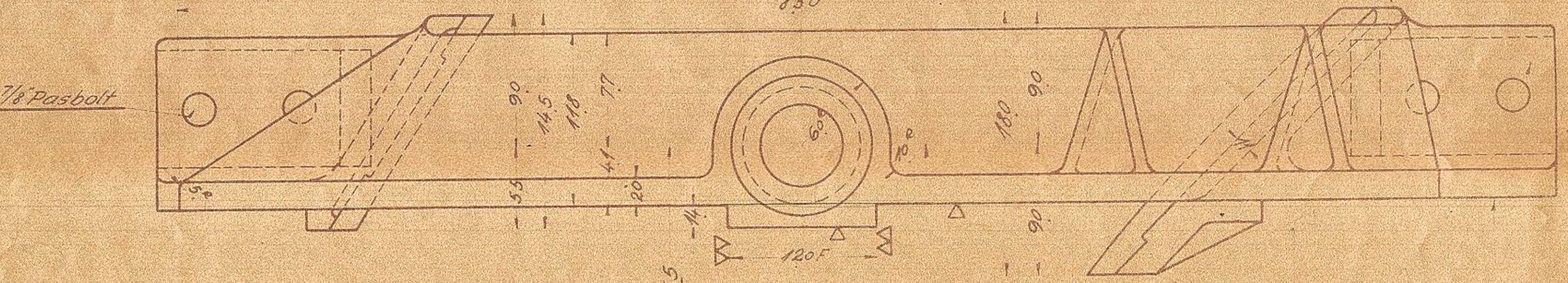
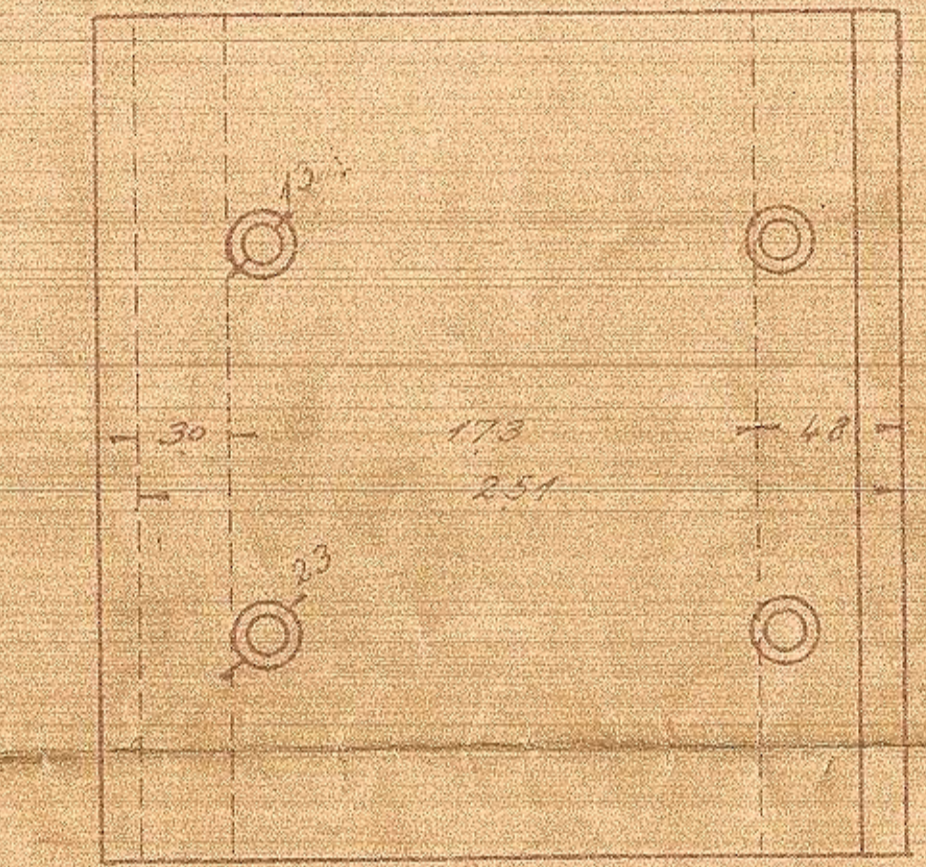
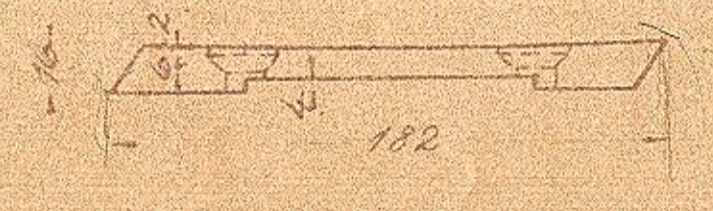
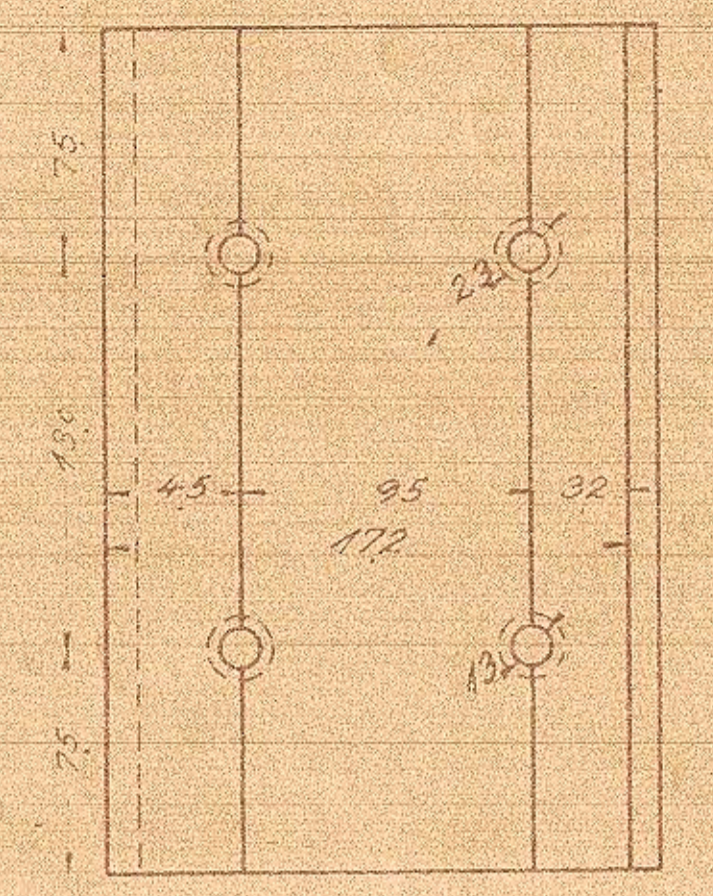
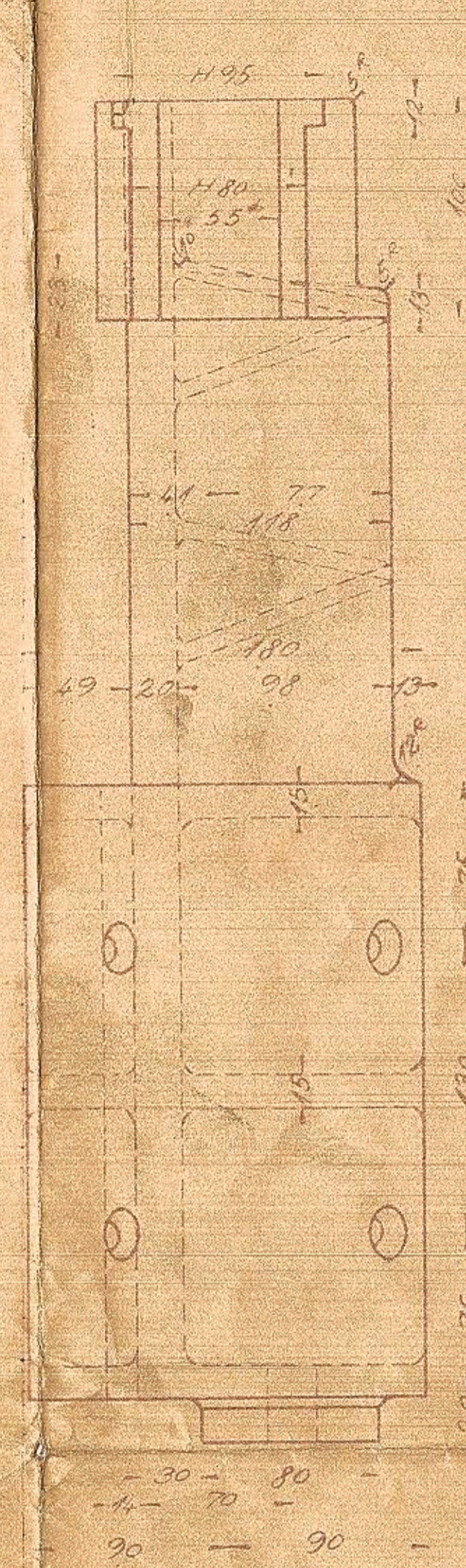
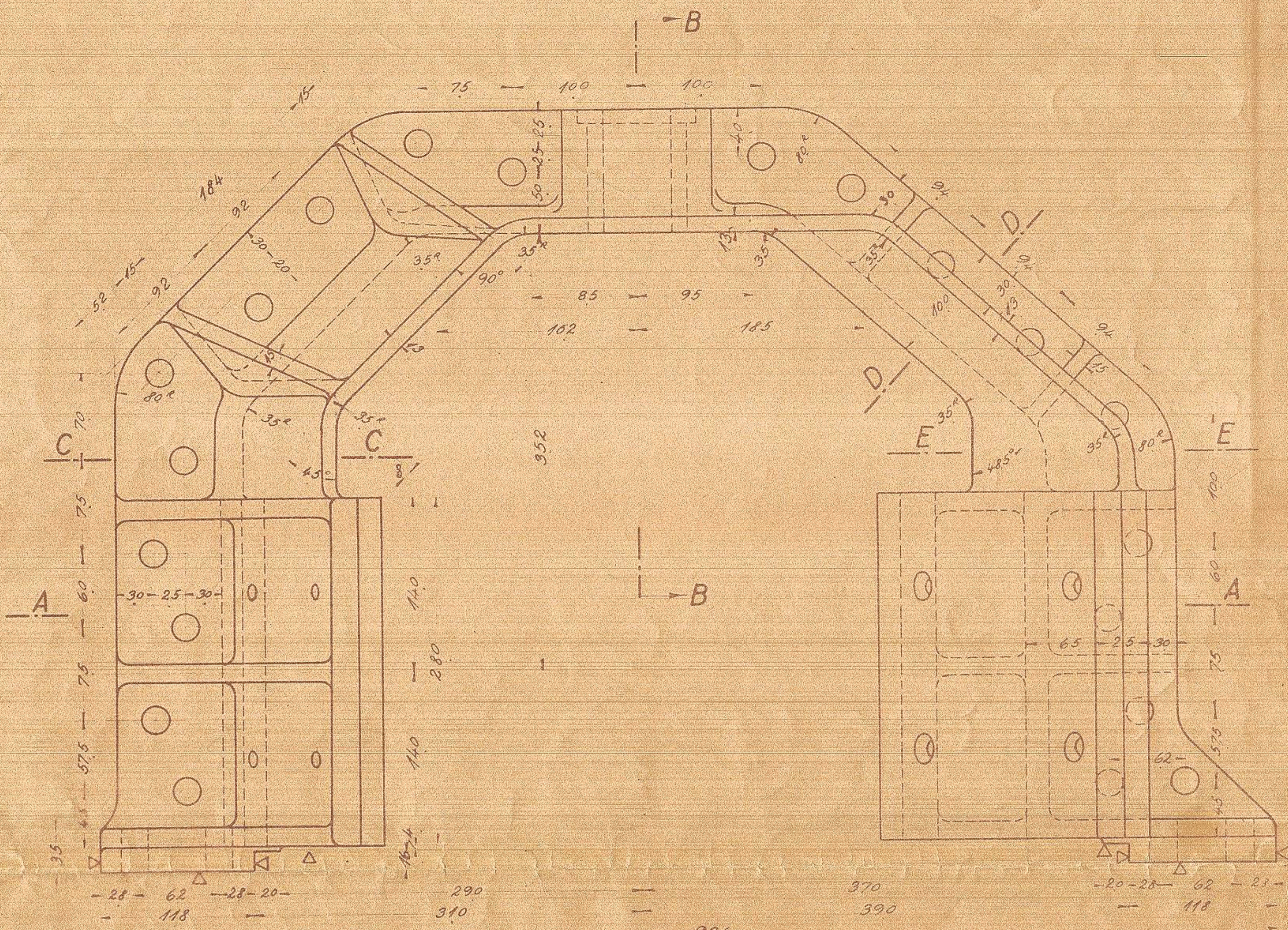


1	2	Akselindretning	Staal	1391	1374
2	2	do venstre	"	1374	
3	4	Ghiesse 2 1/2"	for armer	1374	
4	4	do 2 1/2"	"	1374	
5	4	Borring 2 1/2" No. 100	Selen	2924	55210
6	16	Bolt 1/2" 52	"	2924	55211
7	16	do 1/2" 55	"	2924	55211
8	40	do 1/2" 67	"	2924	55211
9	40	do	"	2924	55211
10	80	Mot. k. 1/2"	"	2924	55211
11	32	do 1/2"	"	2924	55211
12	32	Split 3 1/2 25	"	2924	55211
13	80	do 5 1/2 35	"	2924	55211
14					



10 8 13 12 4 11 6

3 7 9 10 13 9

1208-1209

Aksellejeføring til Løbehjul			
Dæsellet 410-450H Motorakse			
CHV			
År	1:25	131L-1374	
4-1934			