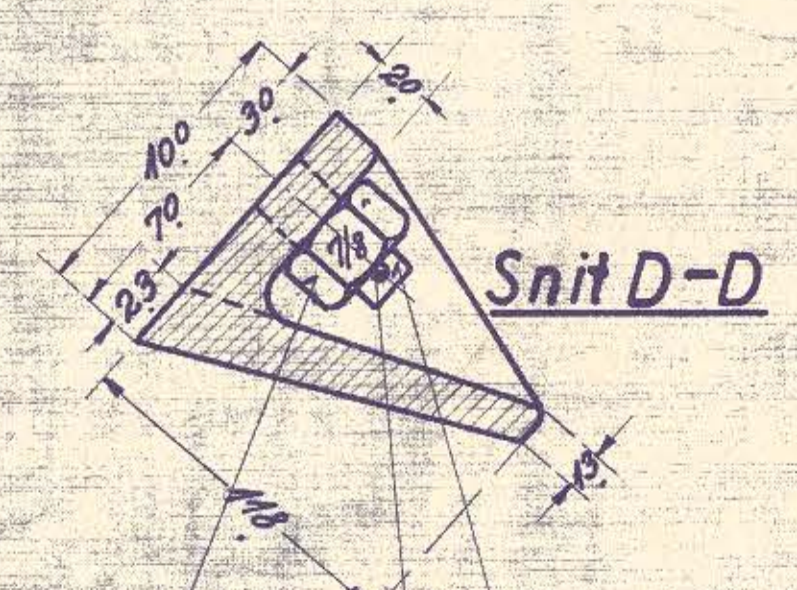
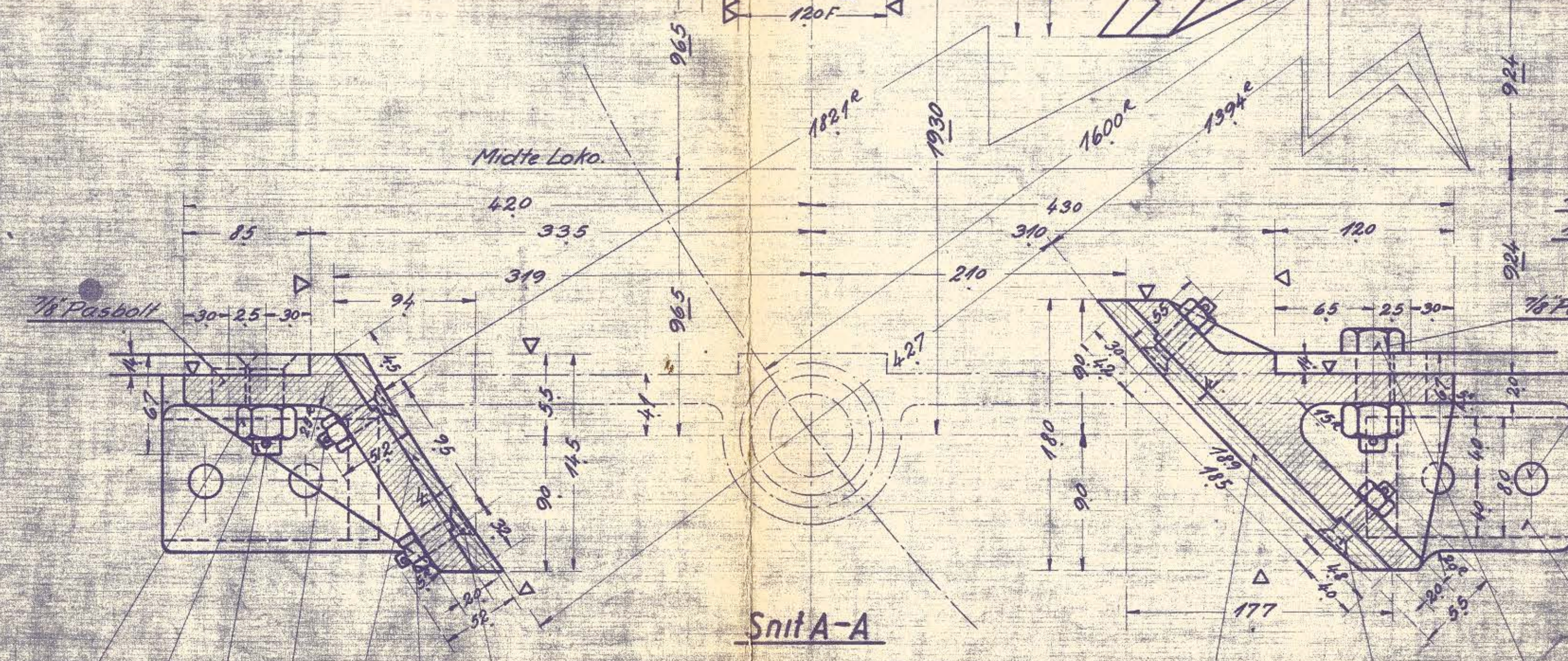
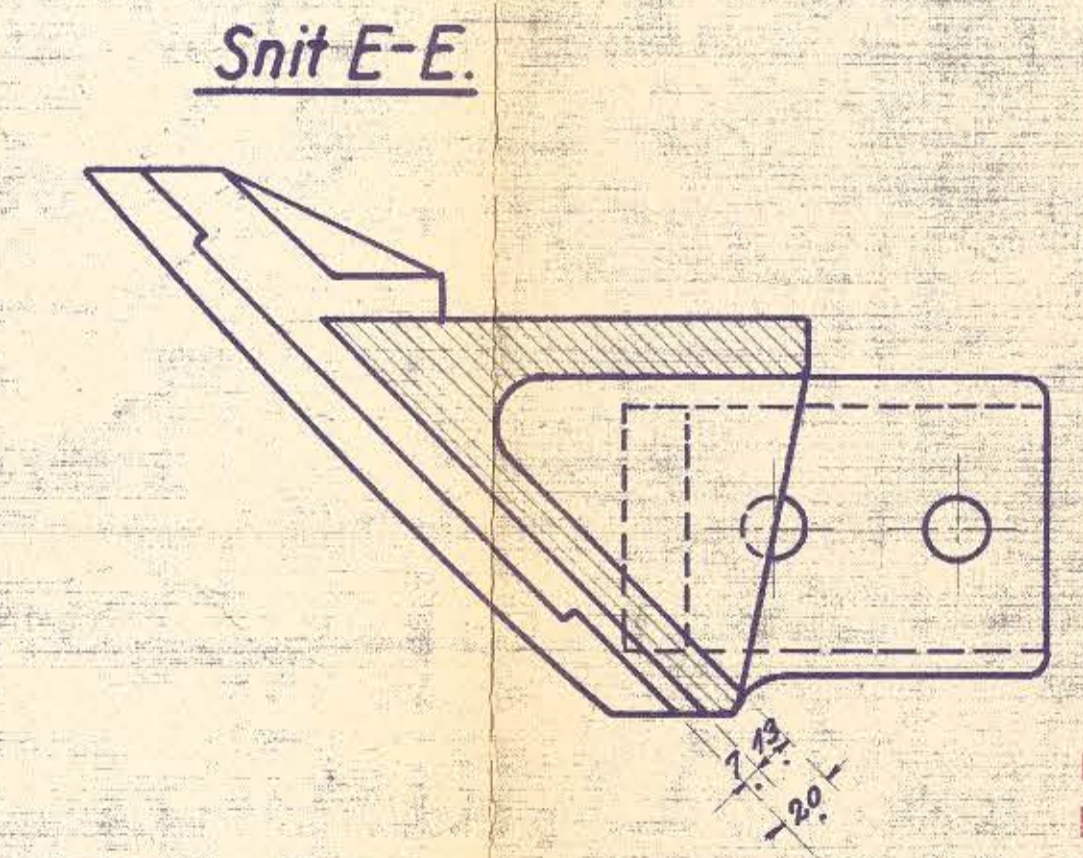
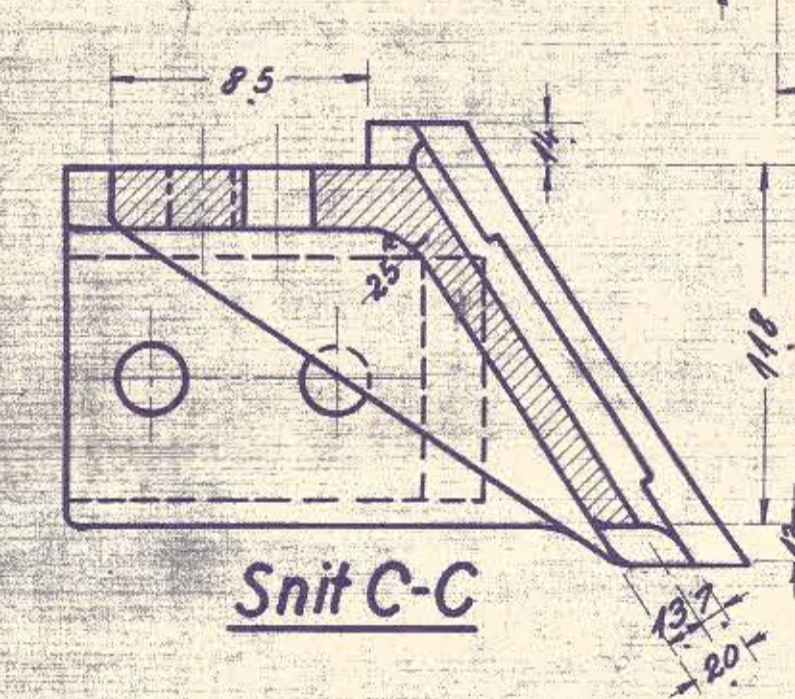
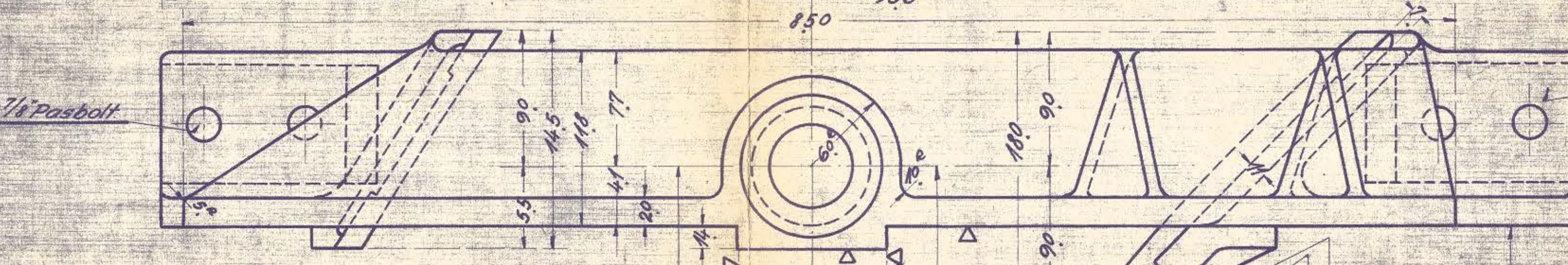
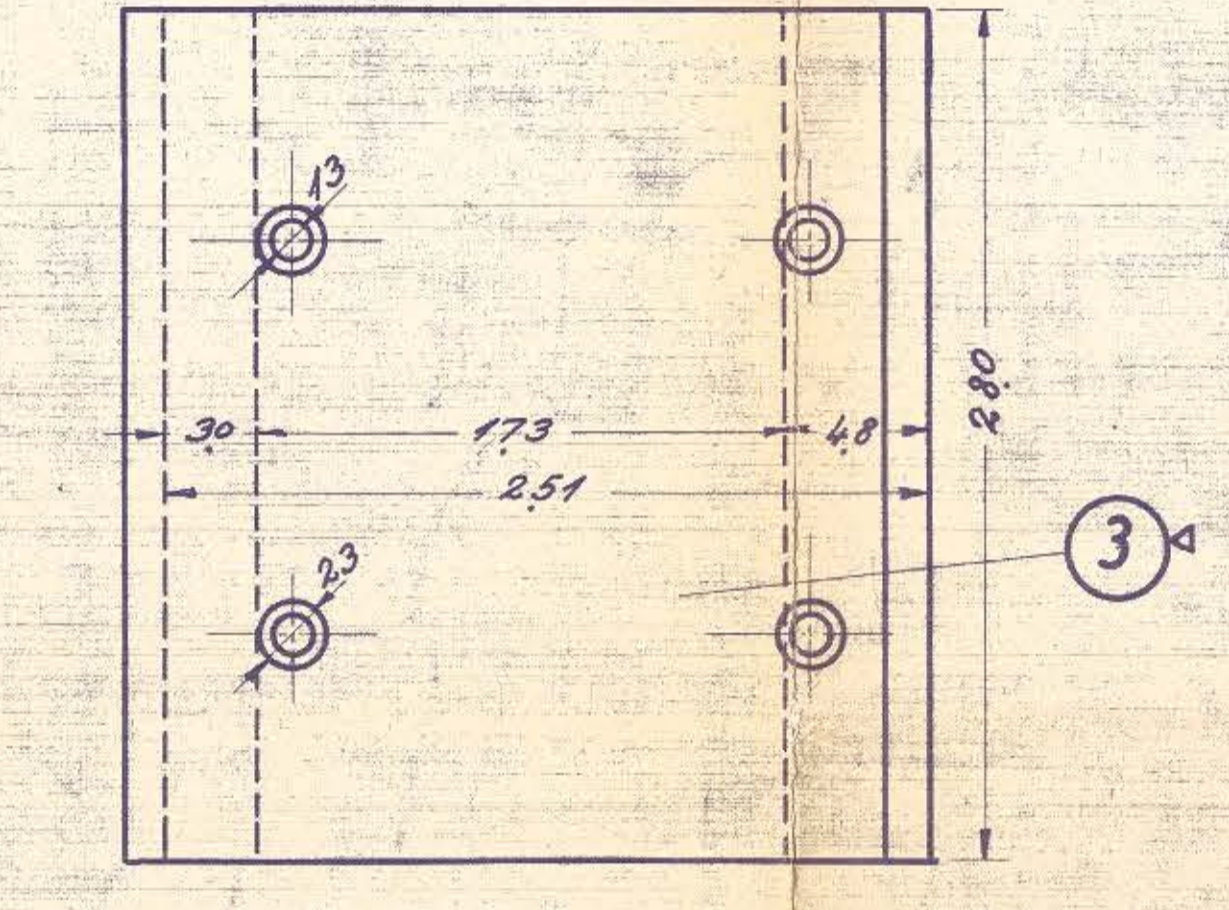
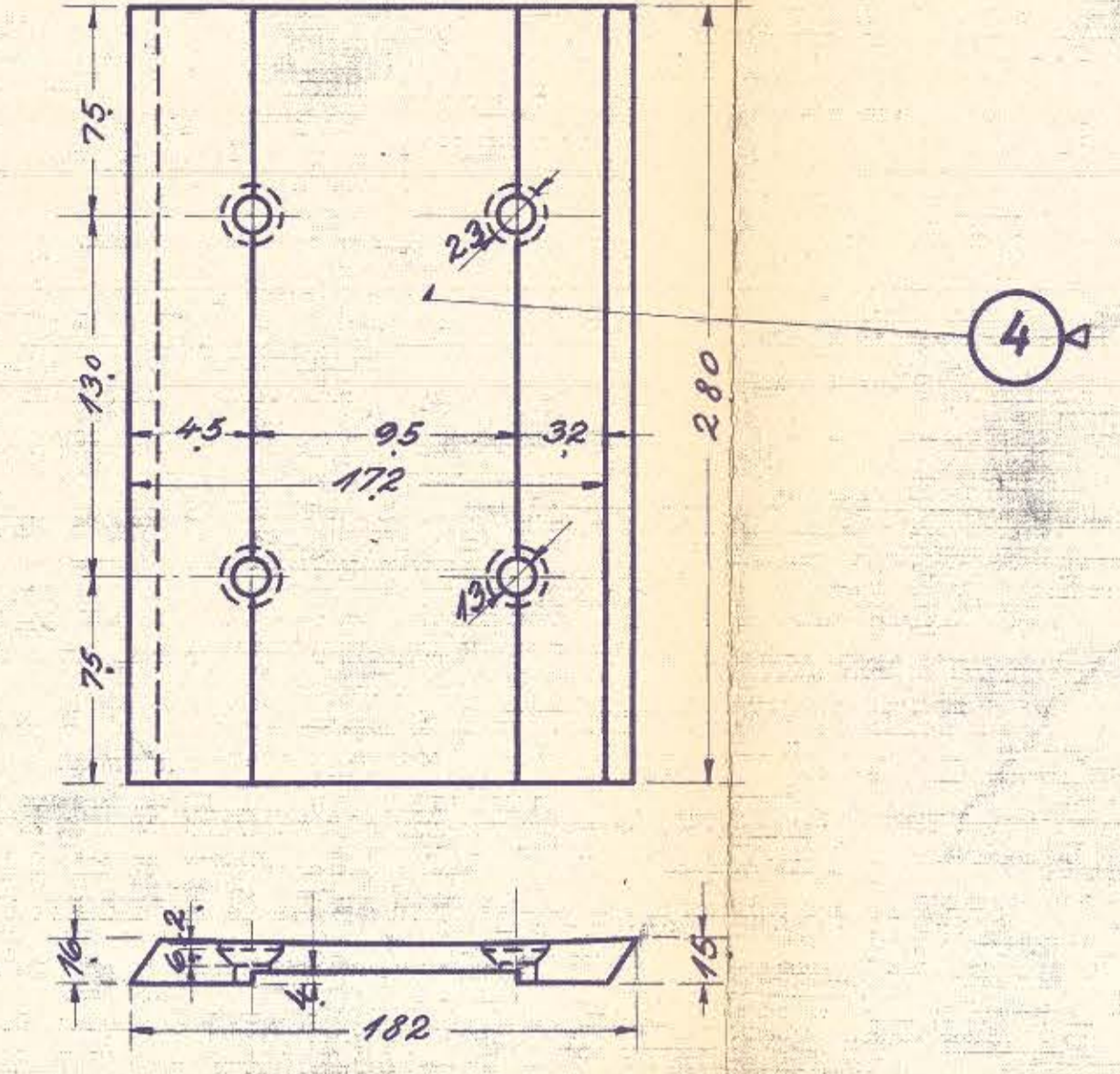
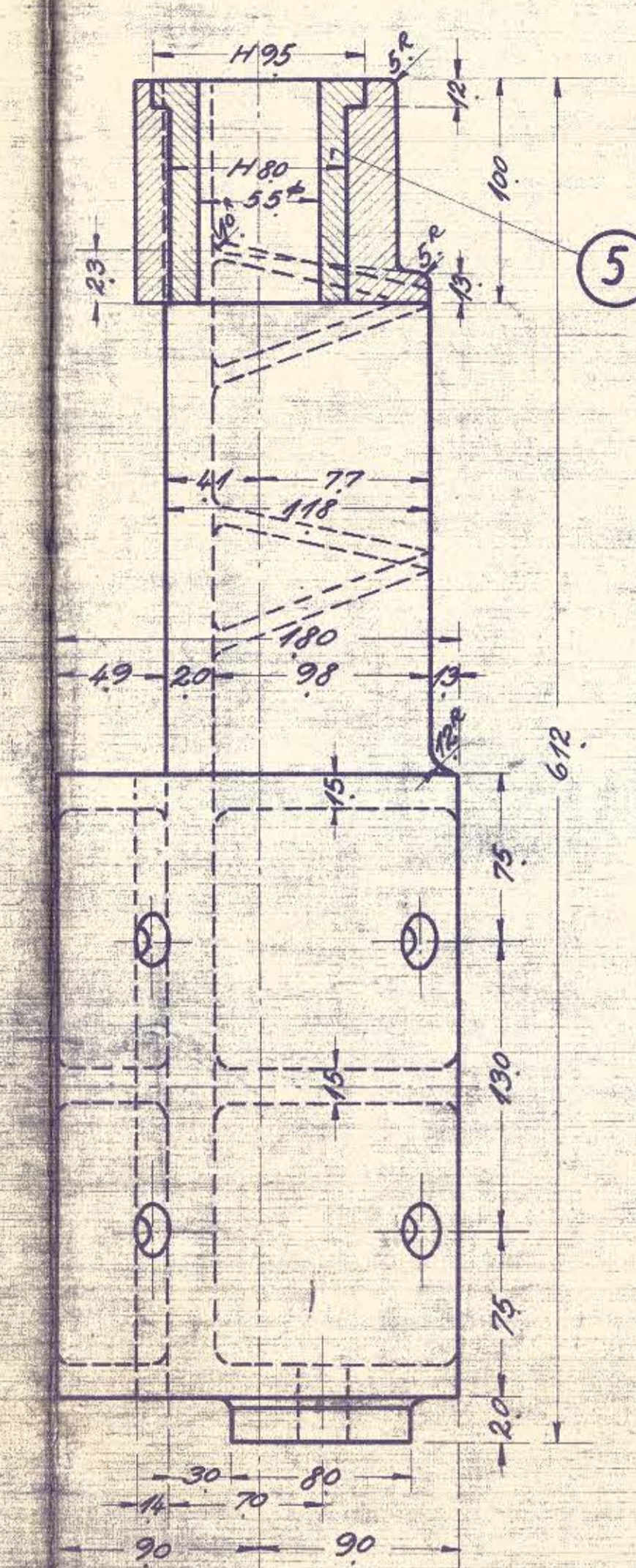
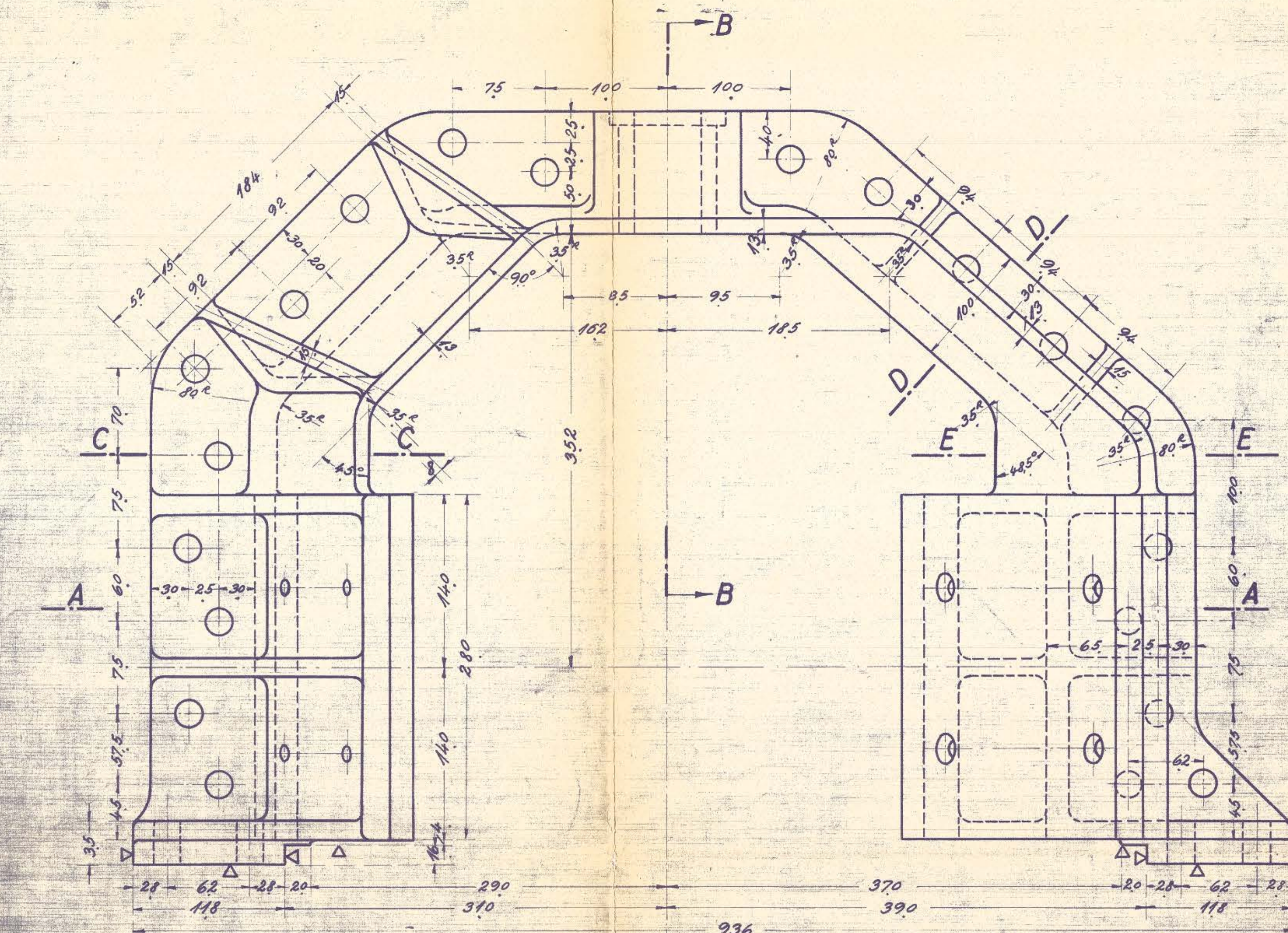


STYKLISTE NO 55235		INDEX TIL STYKLISTE				
NR	STYK	BETEGNELSE	MATERIAL	BEHÅNDLING	BRAND	MARK
1	2	Akselhjulvognstøire	Staal	131L	137L	
2	2	do venstre	"	"	"	
3	4	Gledesto 2 1/2" h.	Løje	137L		
4	4	do 2" h.	brønde	"	"	
5	4	Bøsning 55% 140x100 Se Tegning 28454/55201	"	"	"	
6	16	Bolt 1/2" 52	"	"	"	
7	16	do "x55	"	"	"	
8	40	do 7/8" 67	"	"	"	
9	40	do "x"	"	"	"	
10	80	Matrik 7/8"	Flæs	131L	137L	
11	32	do 1/8"	jern	"	"	
12	32	Split 34x25	"	"	"	
13	80	do 54x35	"	"	"	
14						



Denne tegning må ikke kopieres eller forlægges konkurrerende firmaer, eller trædies med i det hele taget, lige så lidt som de viste dele må bringes til udførelse uden vor tilladelse.
 smk. 1/2 58/33.
 %FRICHS
 31 JAN. 1934

DATE	FORANDRING	INDEX
%s FRICHS AARHUS Aksellejeføring til Løbehjul. Dieselmotor 410-450HK Motorloka C.H.N. 7-1-1934		
125	131L-137L	