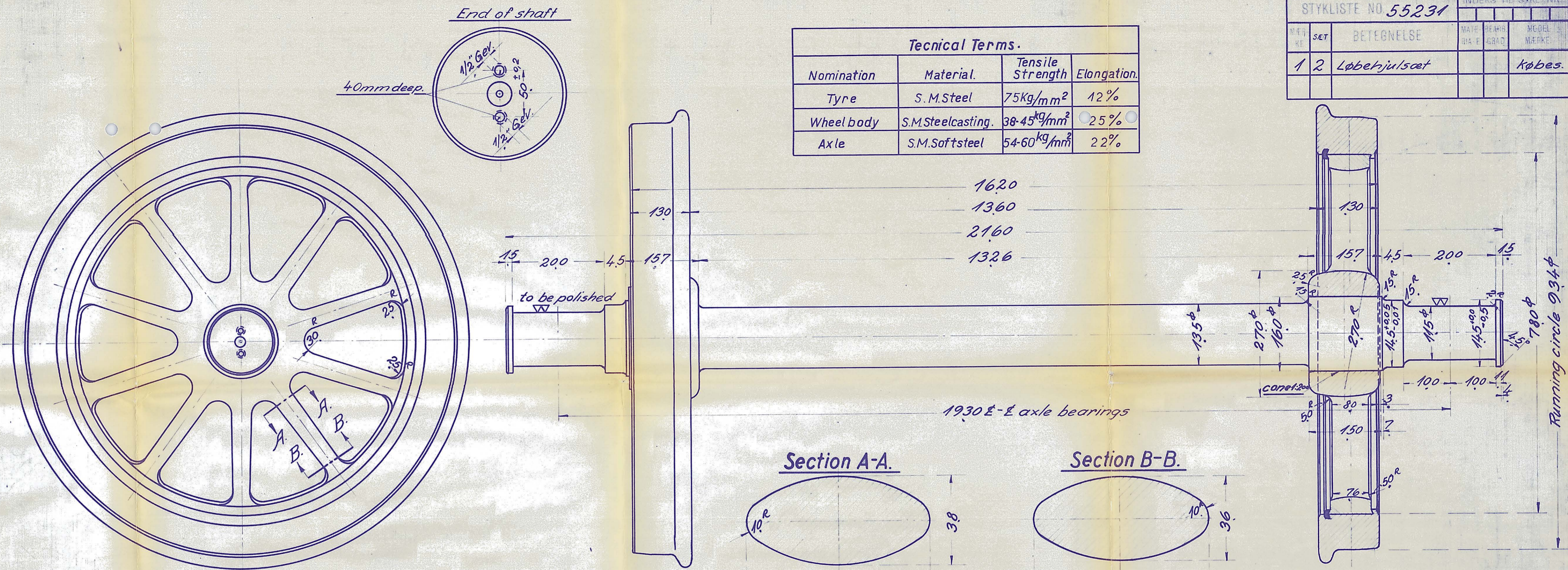


STYKLISTE NO 55231				INDERS TIL STYKLISTE NR.	
NO. I	SET	BETEGNELSE	MATE. NR.	BEHÅ. NR.	MØDEL. MÆRKE
1	2	Løbehjul sæt			Købes.

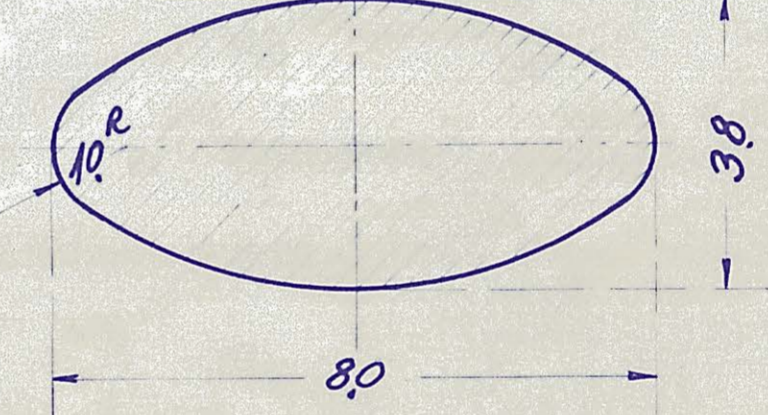
Technical Terms.			
Nomination	Material.	Tensile Strength	Elongation.
Tyre	S.M.Steel	75kg/mm ²	12%
Wheel body	S.M.Steelcasting.	38-45kg/mm ²	25%
Axle	S.M.Softsteel	54-60kg/mm ²	22%



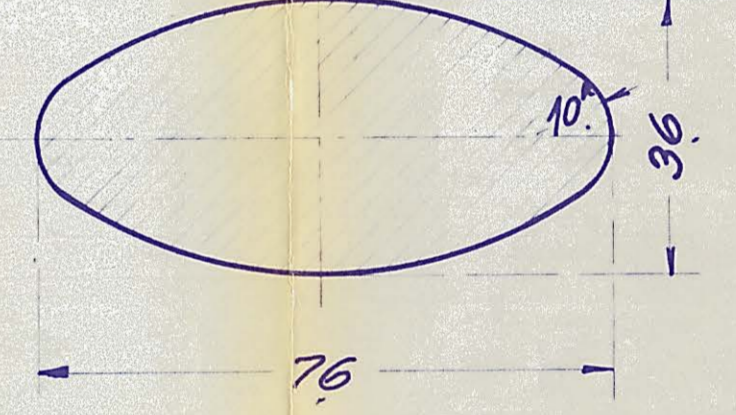
1620
1360
2160
1326

1930 E-E axle bearings

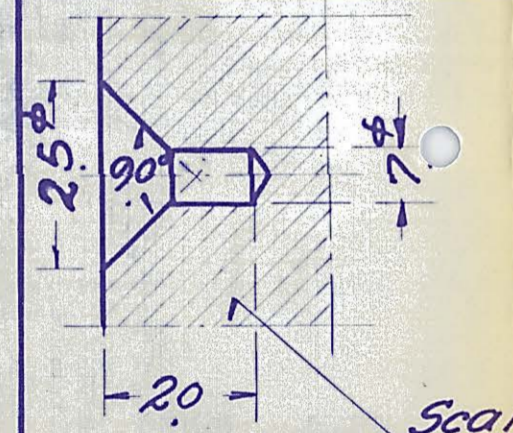
Section A-A.



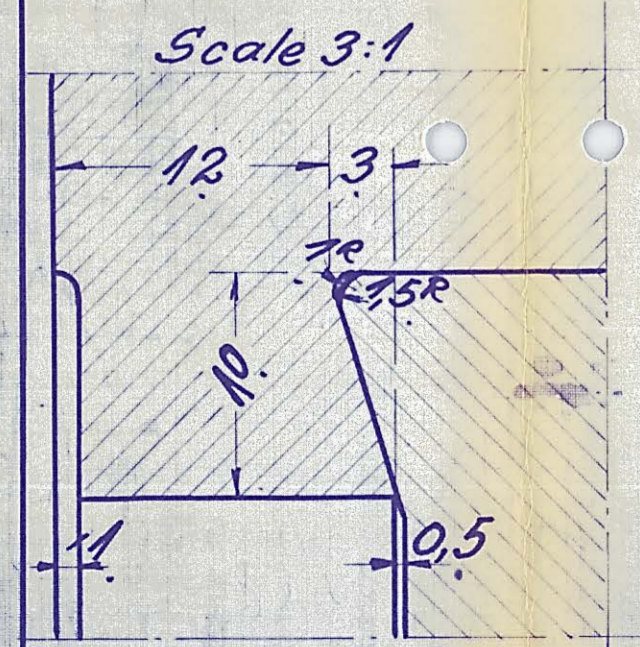
Section B-B.



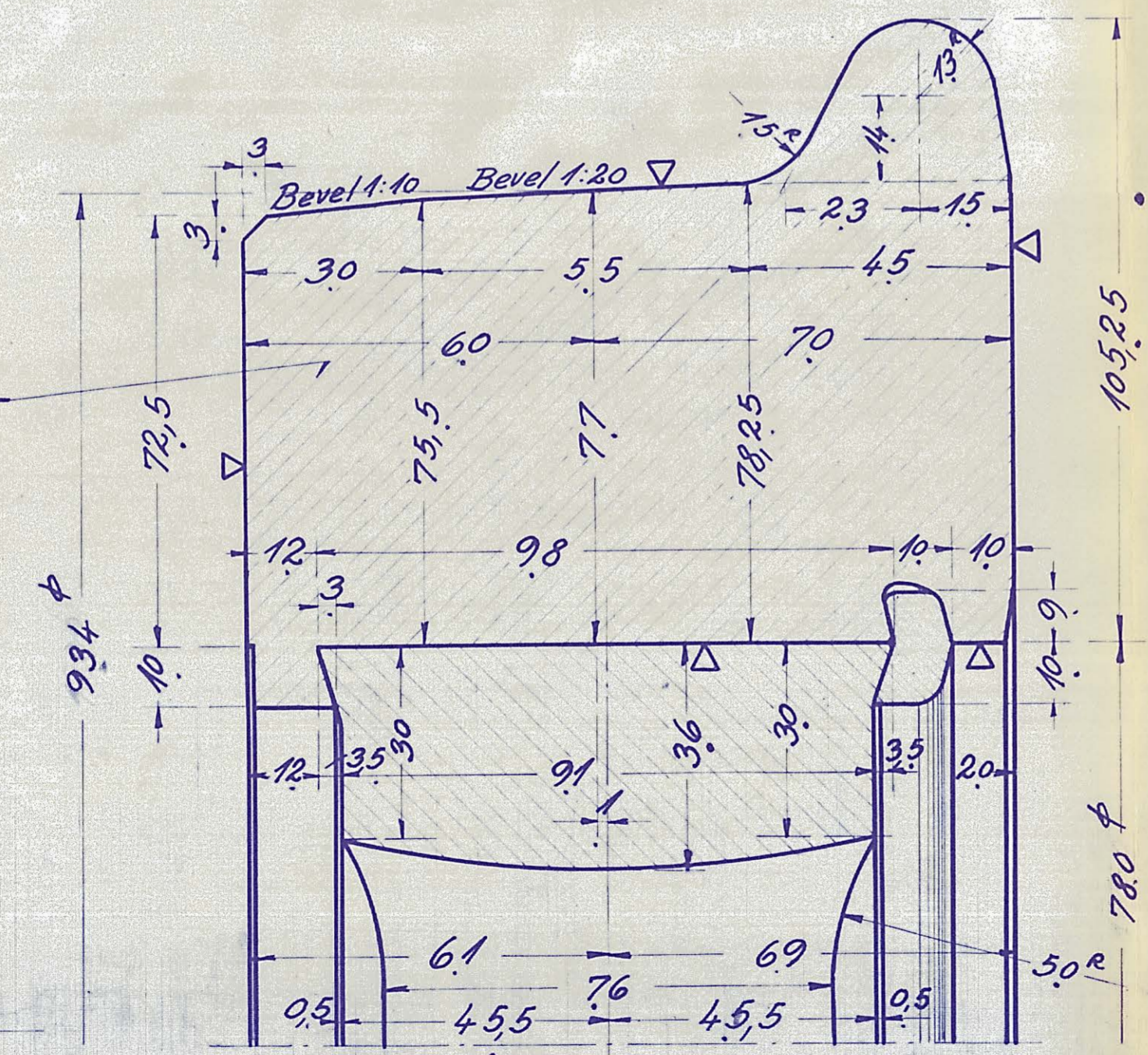
Shaft centrehole



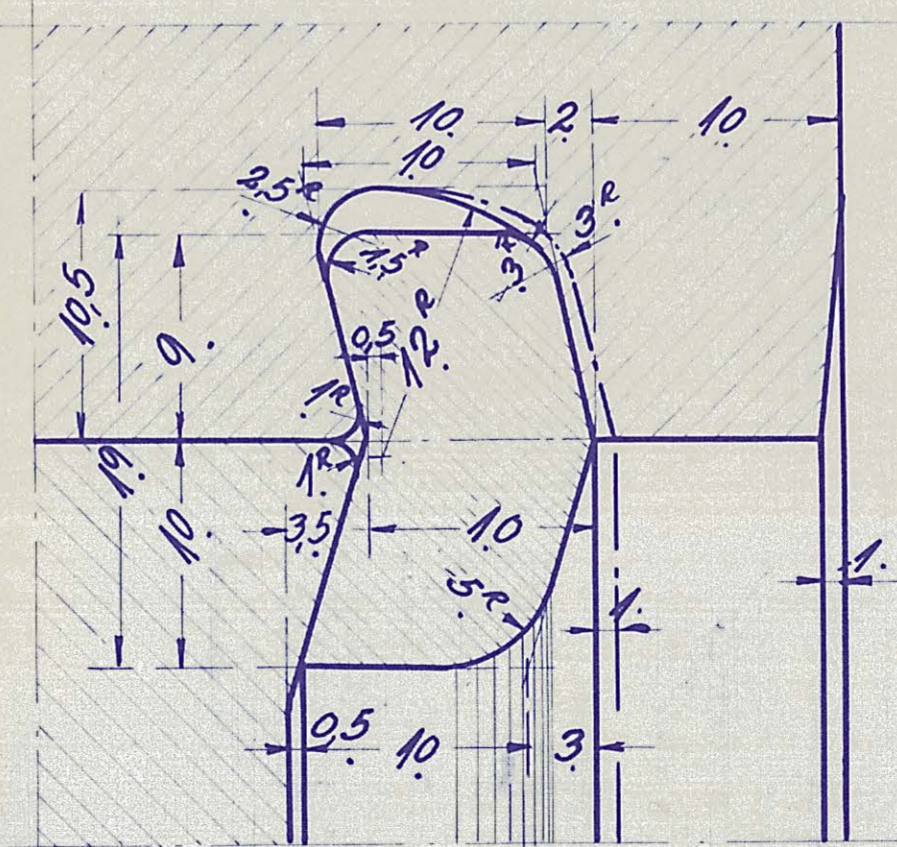
Scale 1:1



Scale 3:1

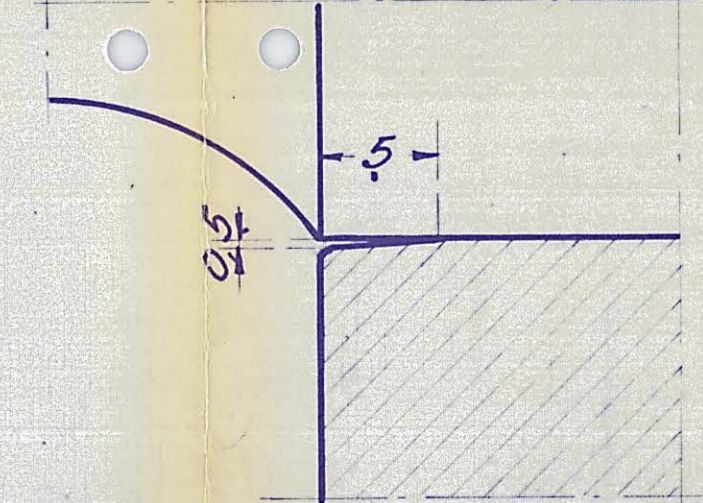


From chain dotted line before rim is driven on



Scale 3:1

Scale 3:1



15.234	Bandage ændret fra 140 til 130 mm	a
DATE	FORANDRINGER	INDEX
A/S FRICH'S AARHUS		
Løbehjul sæt.		
Diesel-el- 410-450 HK Motorloko.		
TEGNET AF <i>A. Taug</i>	MALETSK	TEGNET UD AF
REV. DEPT. NR. <i>101</i>	1:5 1:2.5	131 L-12.10.
DATE 12-2-1934	1:1 3:1	
INDERS TIL TEGNING NR.	a	