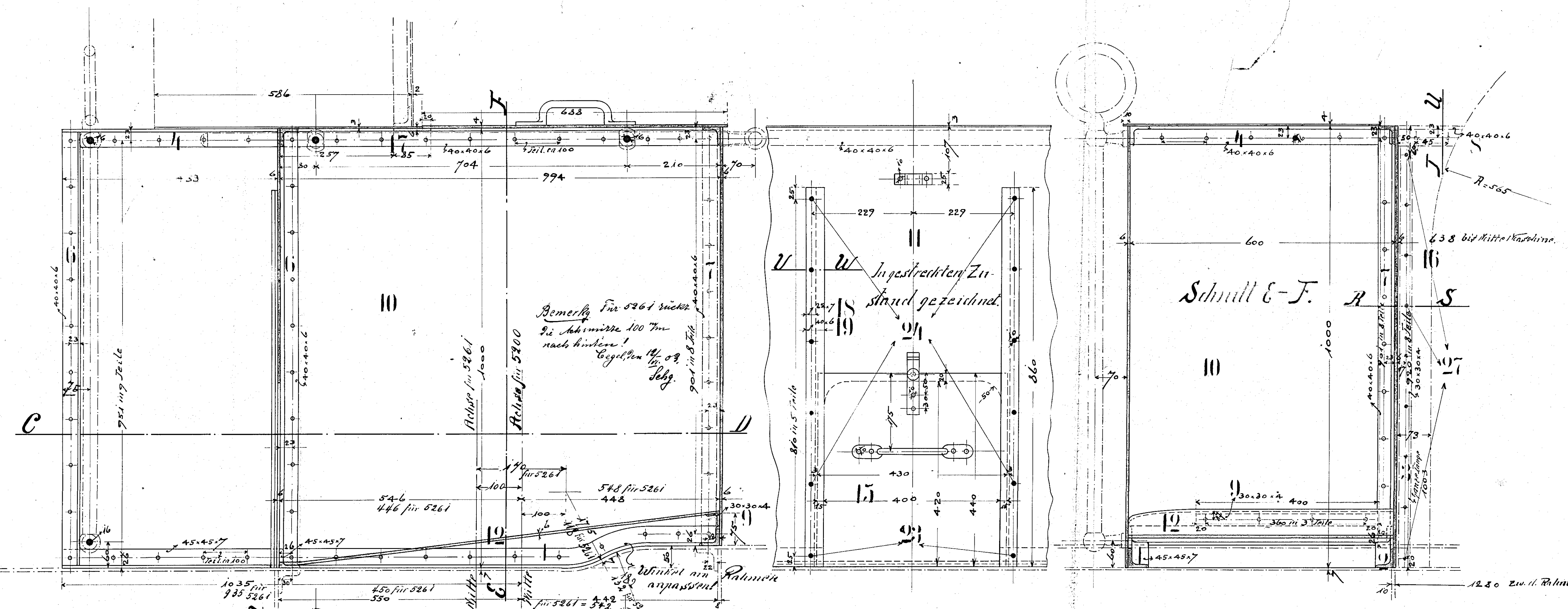
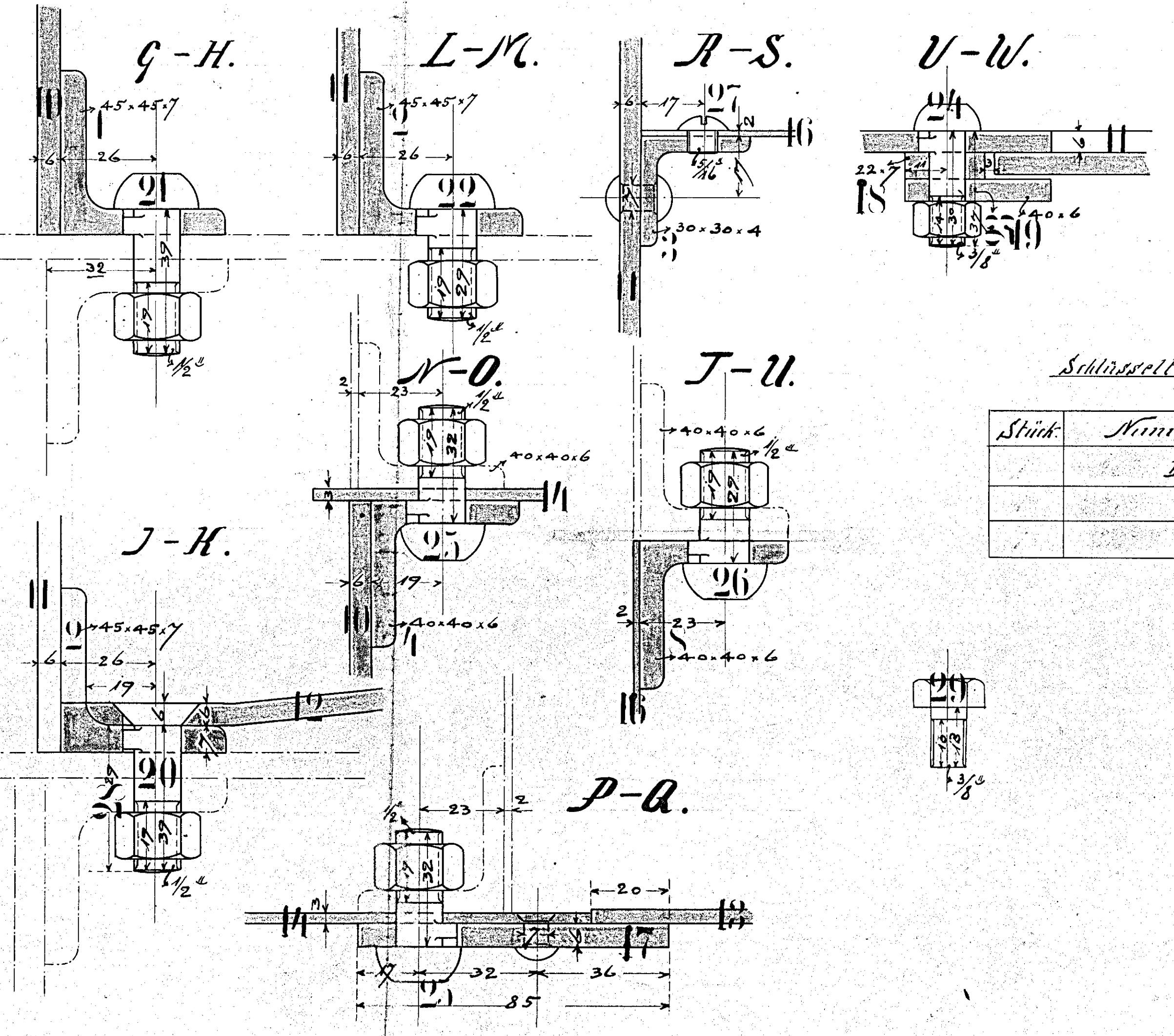
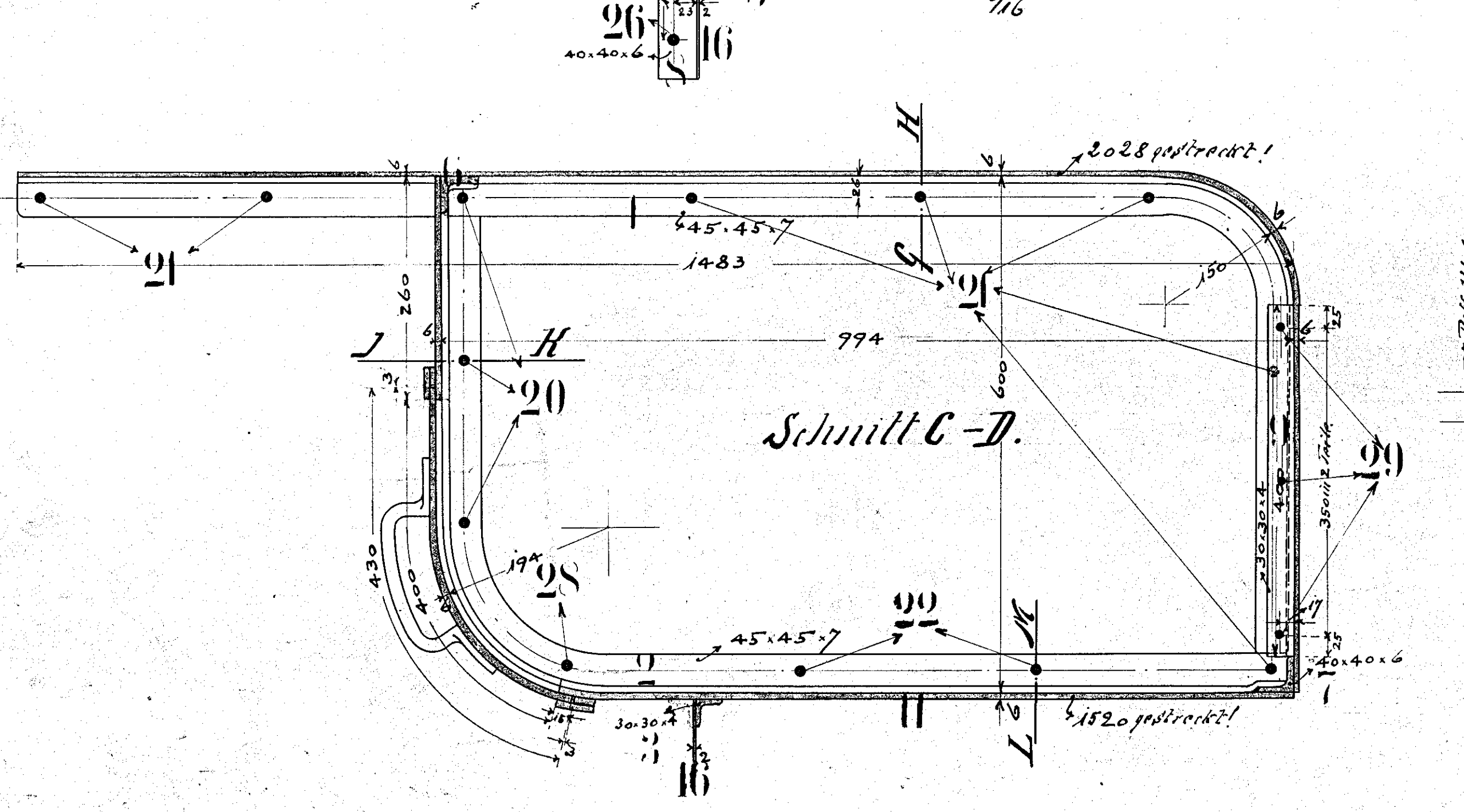
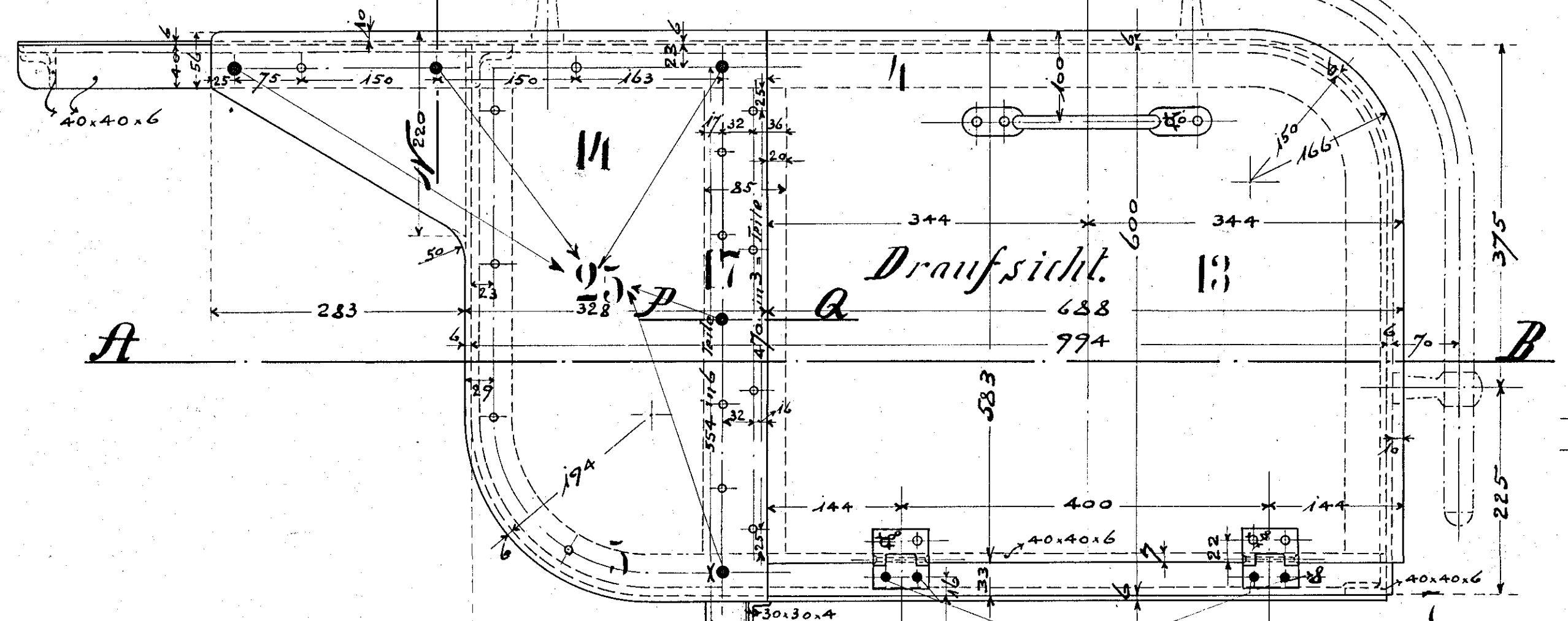


Schnitt A-B.



Pos.	Stk.	Material	Benennung	Bemerkung
1	1	Winkel	45.45x7	werden nach Kundenwunsch angefertigt
2	1	"	"	
3	1	"	30x30x4	
4	1	"	40x40x6	
5	1	"	"	
6	2	"	"	
7	1	"	"	
8	1	"	"	
9	1	"	30x30x4	
10	1	Stufenwand	2040x1040x6	
11	1	Innen-	1540x1040x6	"
12	1	Boden	1010x610x6	"
13	1	Deckel	700x600x4	"
14	1	Deckblock	625x635x3	"
15	1	Schieber	440x430x6	"
16	1	Pfostenblock		Vorrat.
17	1	Flachisen	85x6x520g	"
18	2	"	22x7x80g	"
19	2	"	40x6	"
20	3	Schrb. mit Klettere		$\phi = 1/2 \phi = 37/4$
21	7	"		" " " "
22	2	"		" = $1/2 \phi = 27/4$
23	2	"		" = $3/8 \phi = 37/4$
24	10	"		" = $3/8 \phi = 30/4$
25	5	"		" = $1/2 \phi = 32/4$
26	1	"		" = $1/2 \phi = 29/4$
27	1	Kopfschrb.		" = $7/6 \phi = 6/4$
28	1	Schrb.		" = $1/2 \phi = 29/4$
29	3	"		" = $3/8 \phi = 37/4$



Sämtliche nicht näher bezeichneten Werten haben 8 mm ϕ und sind ausser glatt versenkt!
Winkel siehe Z. Nr. 58/288

Schlüsseltabelle

Stück	Nummer
	Dänische Normation
	"
	"

Einzelgröße Zeichnung	Material	Material
Rahmen	5200	5200
Winkel z. Mollenkasten	5288	5288
Bewläge	51323	51323
Schutzdach		
Flachisen an Mollenkasten	51322	51322
" - d. Mollenkasten	51324	51324