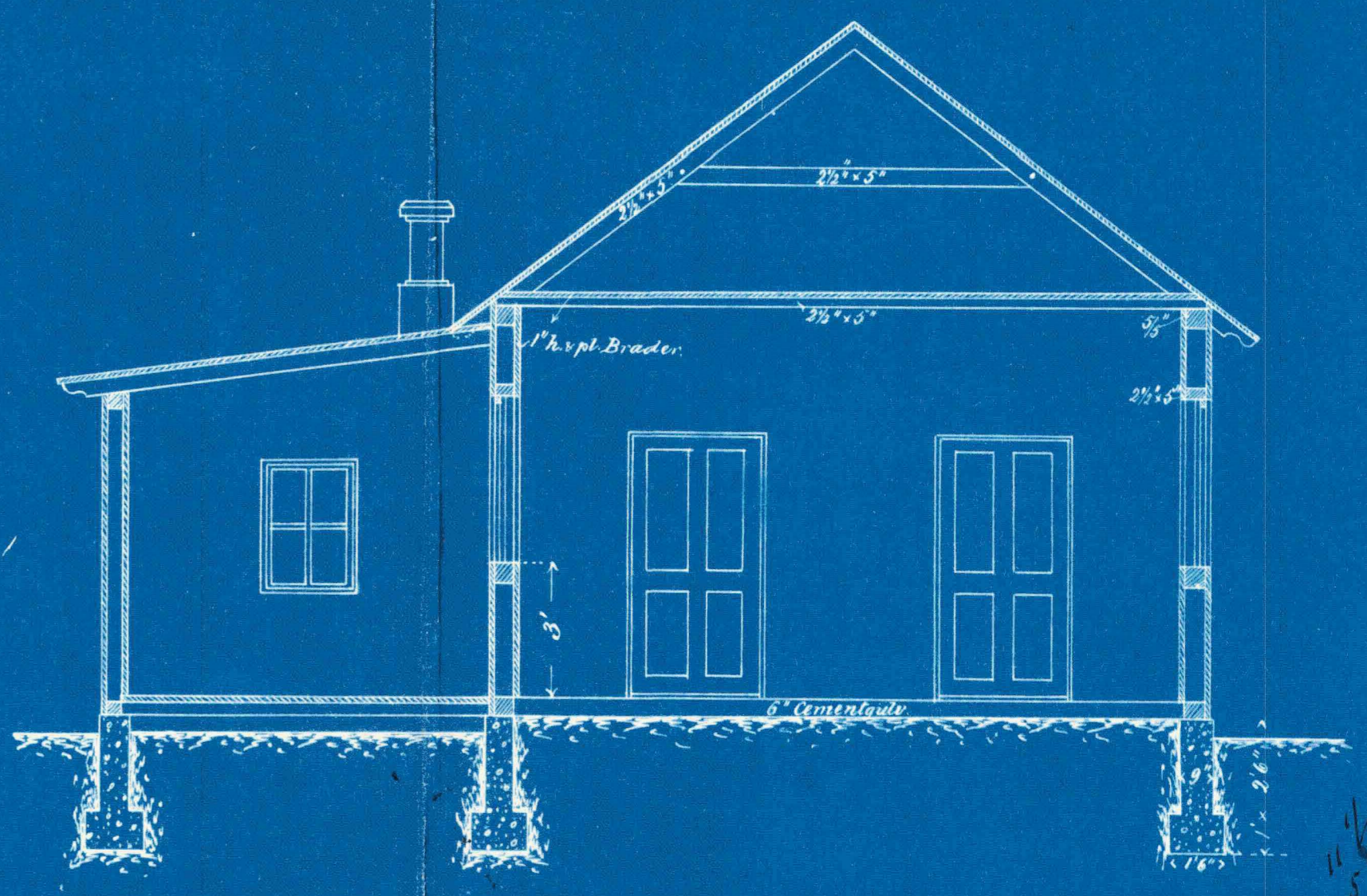
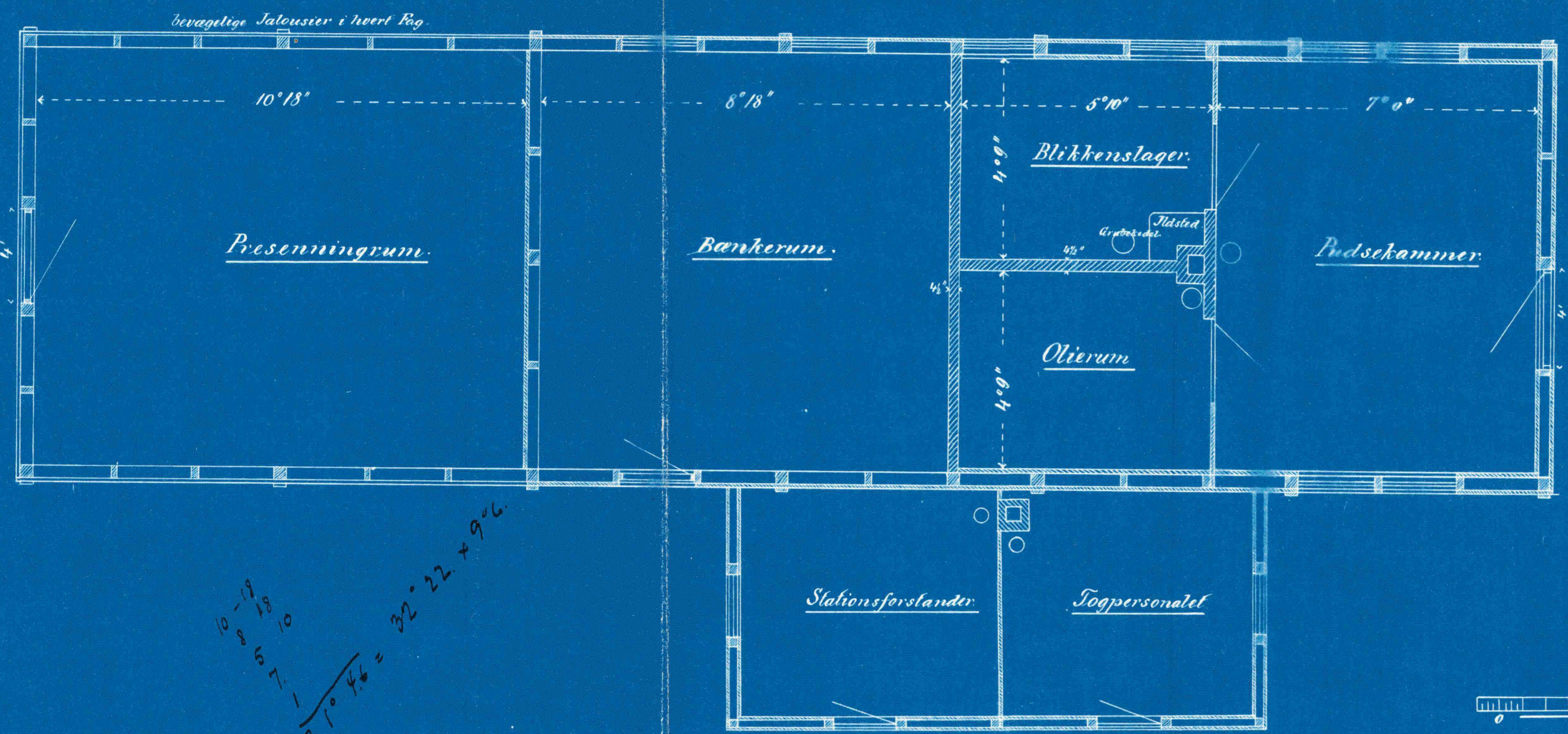
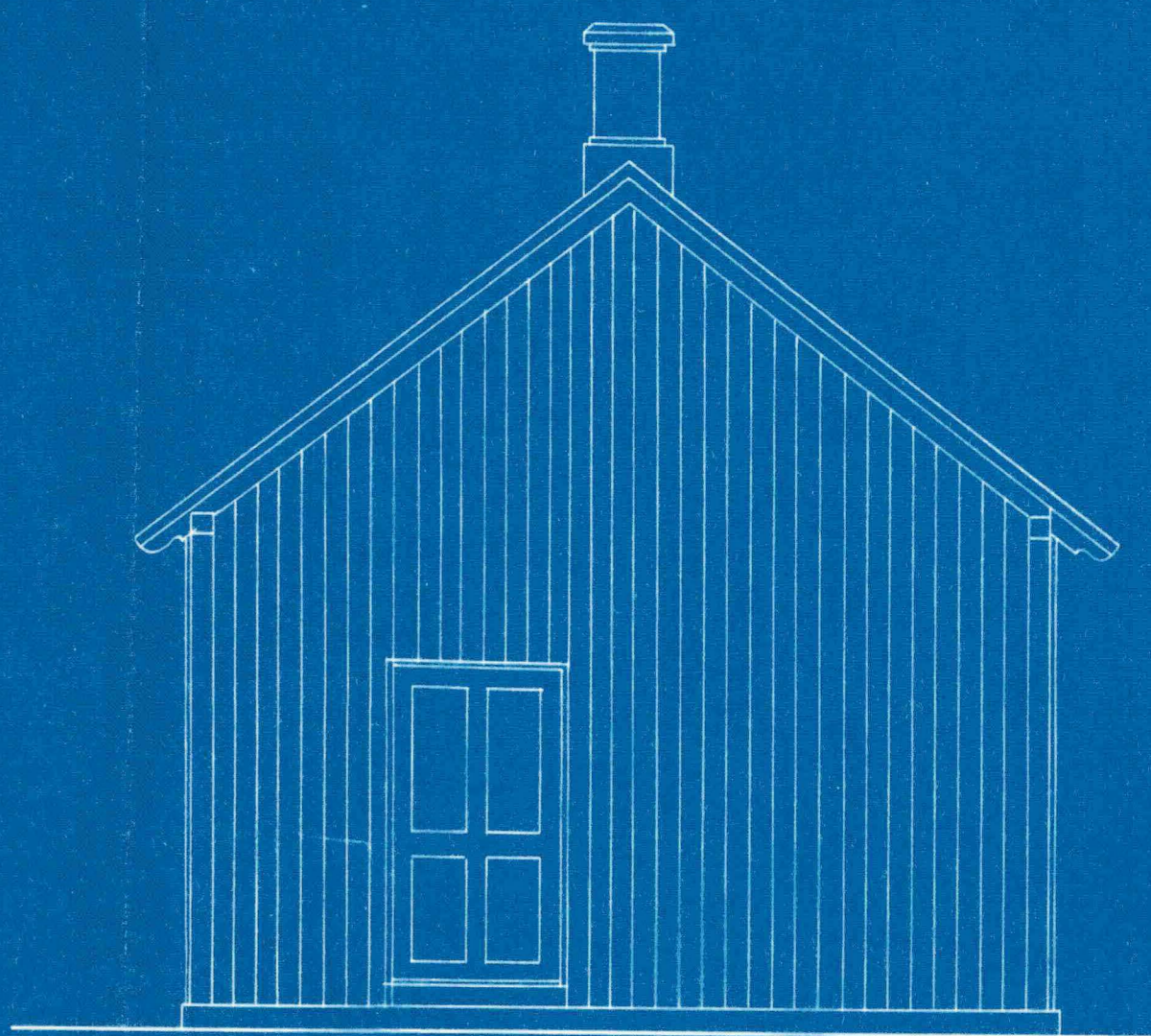
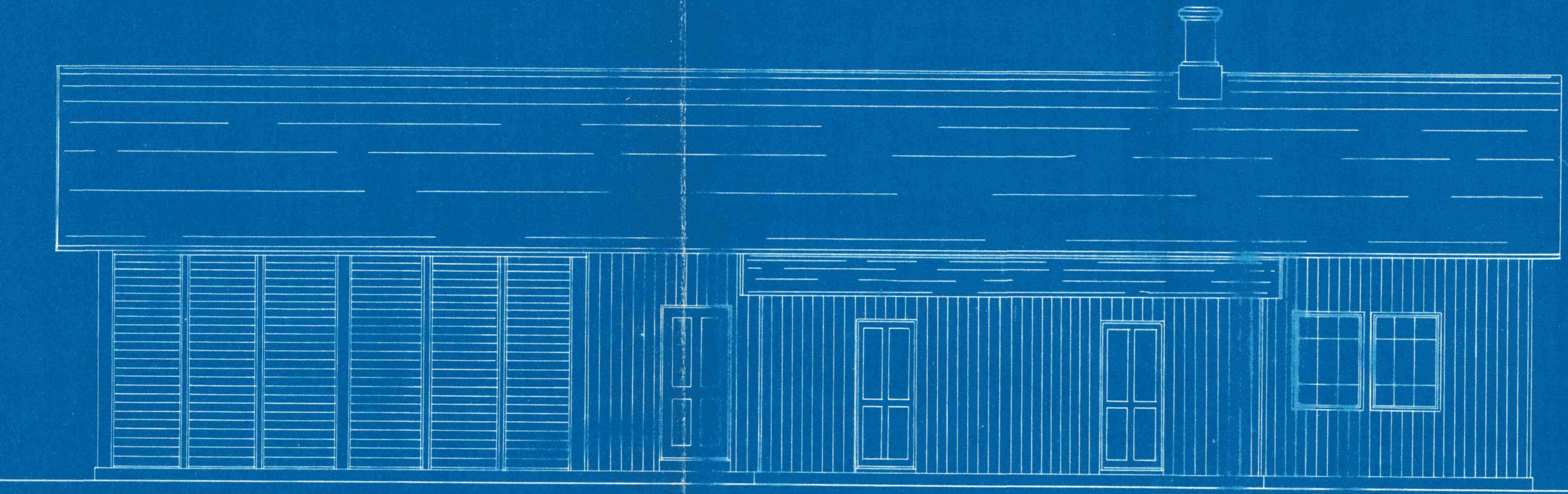


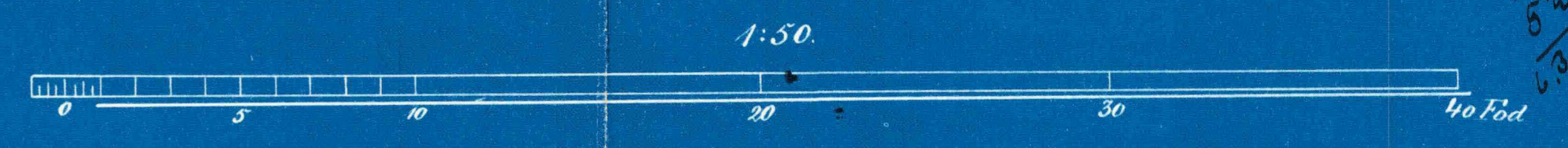
1078.
 Med Svar af *M. M. M.* fra
 Aalborg Bygningsskole.

Skur til Vogninventar, Pudsekammer, m. m.
Aalborg Station.



Handwritten calculations:

$$\frac{10 \cdot 18}{37 \cdot \frac{1}{6}} = 32 \cdot 22 \cdot 9 \text{ etc.}$$



Handwritten notes:
 11/16
 5/16
 5/16
 5/16
 5/16
 5/16

*Skur til Vogninventar, Pudsekammer, m.m.
Aalborg Station.*

