



RAILWAY CENTENARY

1825 ————— 1925

“Sentinel-Cammell”
Steam Rail Coaches
and
“Sentinel”
Patent Locomotives

For full particulars apply to

The “Sentinel” Waggon Works Ltd.


Railway Department :

17 Iddesleigh House, Caxton St., Westminster

Telephone :
Victoria 4650

LONDON, S.W. 1

Cables & Telegrams :
“Sentnoll London”



MATHIESEN OG BERNST
INGENIØRER
DAMPHEDEKONSTRUKTØRER
OG LET: LOBSKÆR
TESDORPFSVEJ 20 ♦ KBH · K

RAILWAY CENTENARY

1825 — 1925

“Sentinel-Cammell” Steam Rail Coaches

for
All Gauges and all Climates

Light — Speedy — Mobile
————— Reliable —————

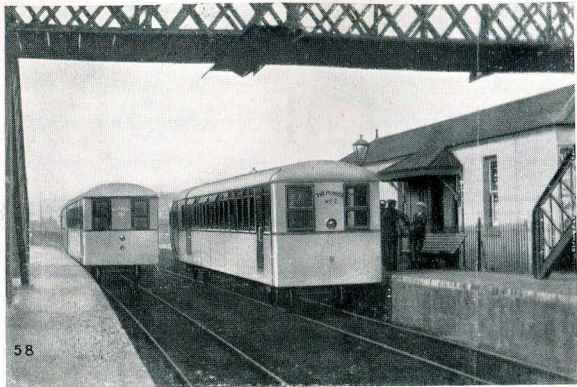
**THEY CARRY 56 SEATED PASSENGERS
AT AN INCLUSIVE RUNNING COST OF
FROM 6d. TO 8d. PER TRAIN MILE**

They are in service in :—

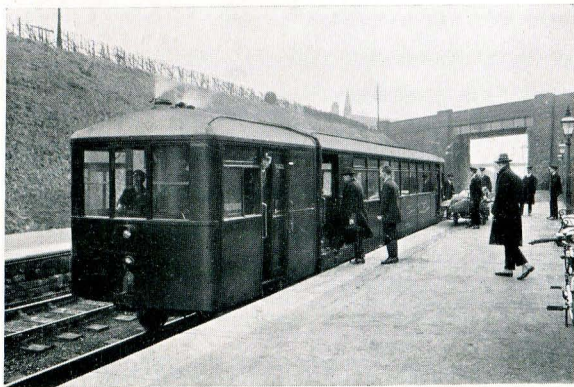
Great Britain	Sweden	Chile
Ireland	Australia	South Africa
France	India	New Zealand,
Jersey	Ceylon	Etc.
Denmark	Argentine	

They may be seen at the Wembley Exhibition and
are taking part in the Railway Centenary Procession
at Darlington in July, 1925

“Sentinel-Cammell” Steam Rail Coaches

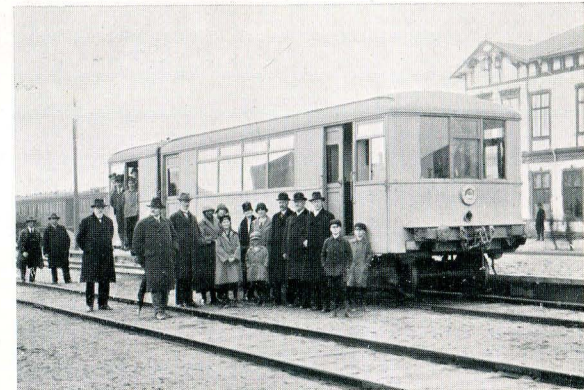


Jersey
(Channel Islands)
(3' 6" gauge)

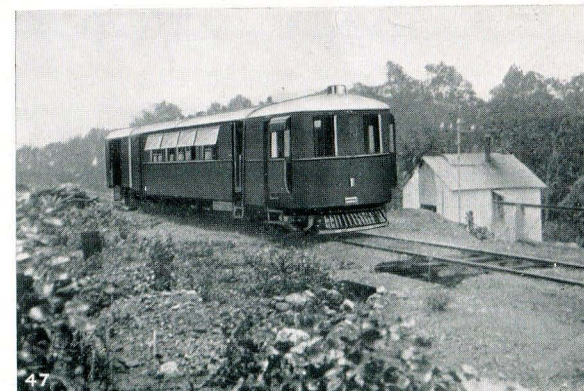


Great Britain
(4' 8½" gauge)

“Sentinel-Cammell” Steam Rail Coaches

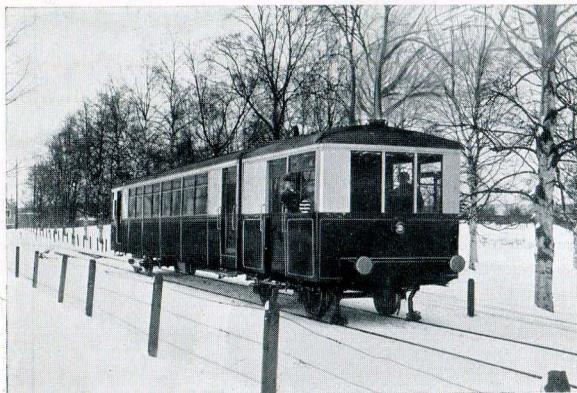


Sweden
(4' 8½" gauge)



Australia
(3' 6" gauge)

“Sentinel-Cammell” Steam Rail Coaches



Sweden
(4' 8½" gauge)



Ceylon
(5' 6" gauge)

RAILWAY CENTENARY

1825 — 1925

“Sentinel” Patent Locomotives

Economical — Efficient
—— Reliable ——

**BUILT IN WEIGHTS OF FROM 6 TO 35 TONS
TO SUIT ALL GAUGES AND PURPOSES.**

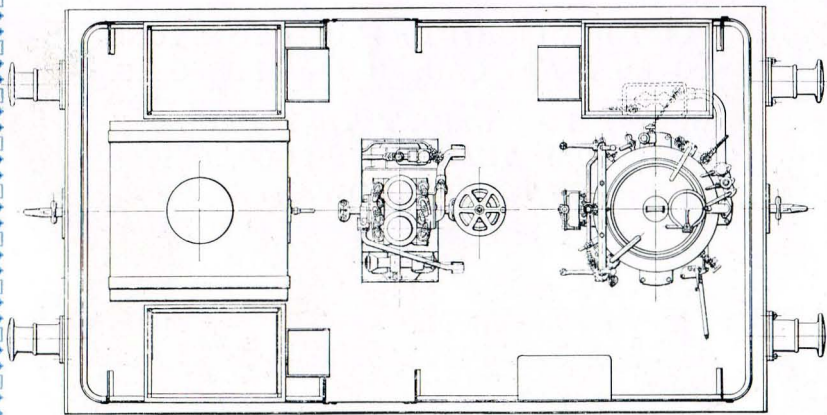
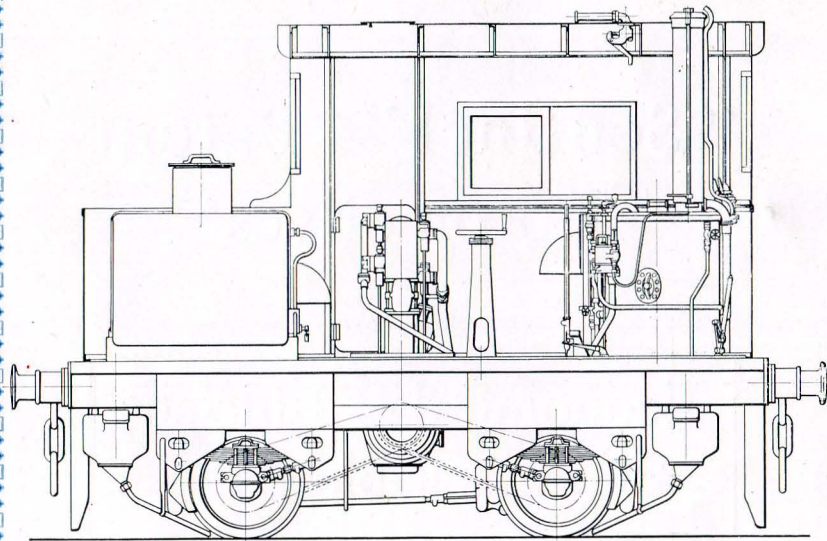
**WEIGHT FOR WEIGHT THEY HAUL 25%
MORE LOAD THAN LIGHT LOCOMOTIVES
OF THE ORDINARY TYPE**

They are in service in:—

Great Britain	India
Ireland	South Africa
France	Egypt

They may be seen at the Wembley Exhibition.

“Sentinel” Patent Locomotives



General Arrangement
of
10-20 Ton Locomotives

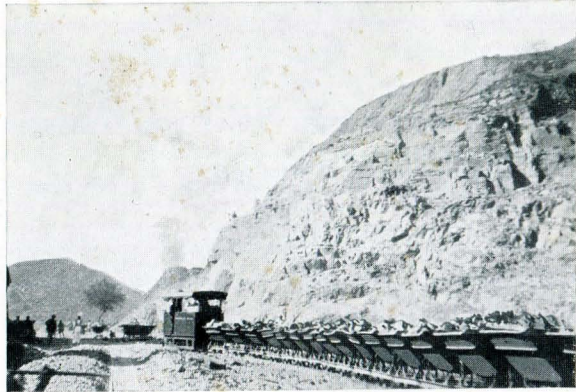


12-Ton Locomotive Hauling
20 10-Ton Waggons

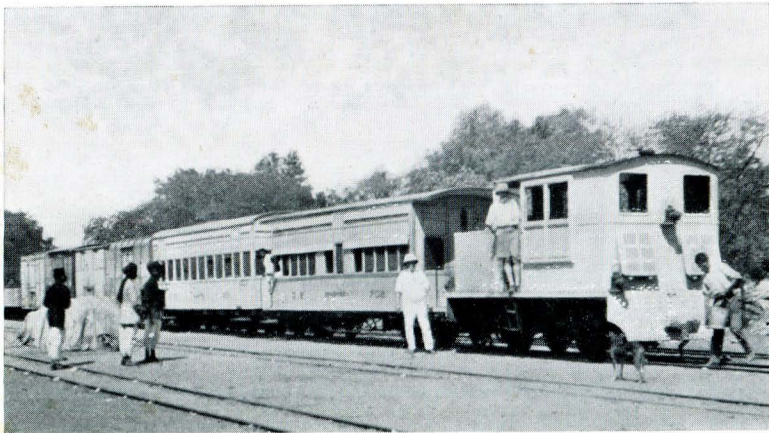


20-Ton Locomotive Exerting a Drawbar Pull
at Starting of $5\frac{1}{2}$ Tons on Dry Rails

“Sentinel” Light Locomotives



India
(2' 0" gauge)
6-Ton Locomotive Hauling 42 Hopper Waggon
up a Gradient of 1 in 110



India
(2' 6" gauge)
A 10-Ton Locomotive Hauling a Mixed Train weighing 103 Tons

