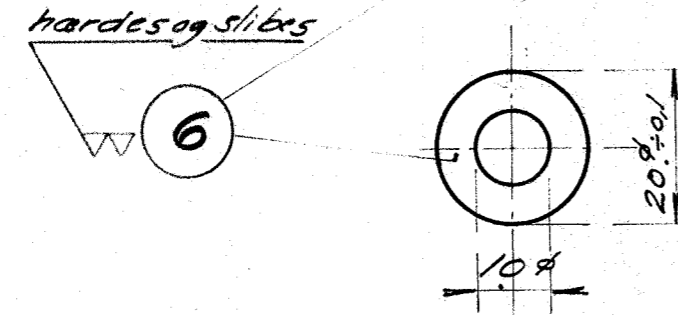
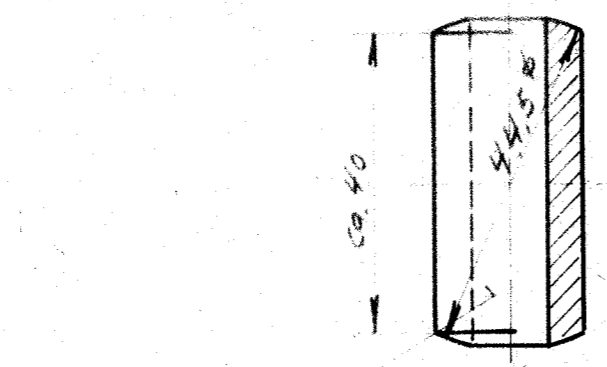
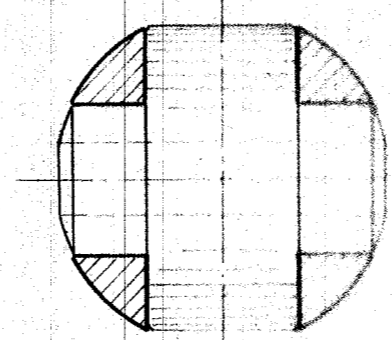
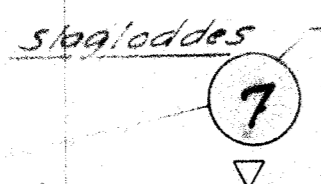


1 *hårdes samtidig med Slaglodning*

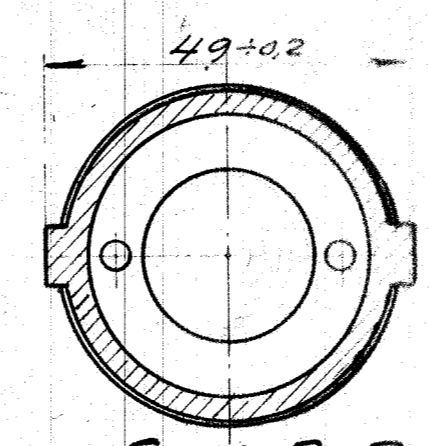
2 *hårdes samtidig med Slaglodning*



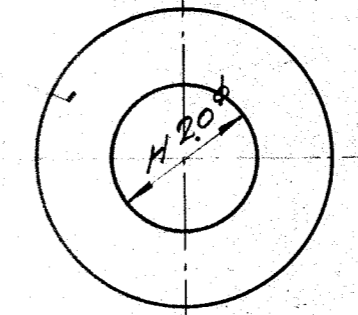
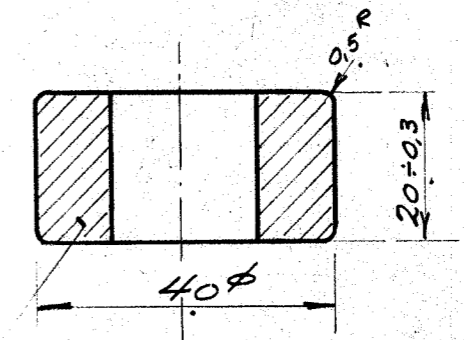
7 *Åben for Jodsugevent. nærmest Gear paa hver Cyl.*



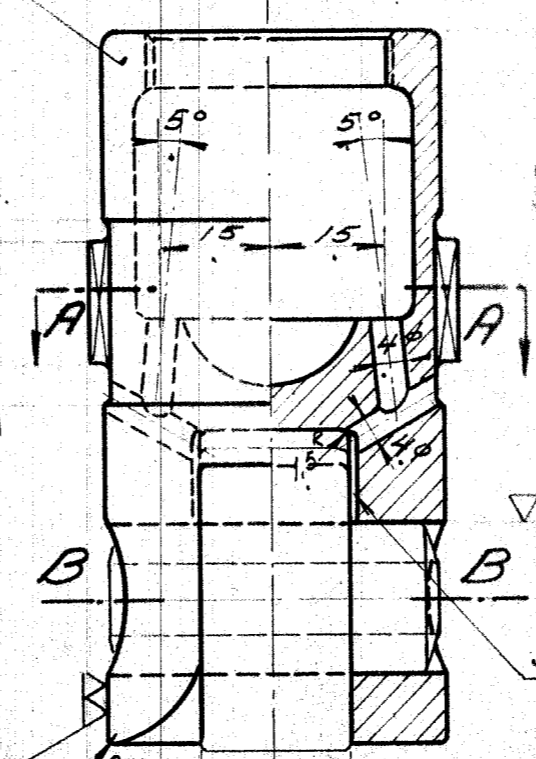
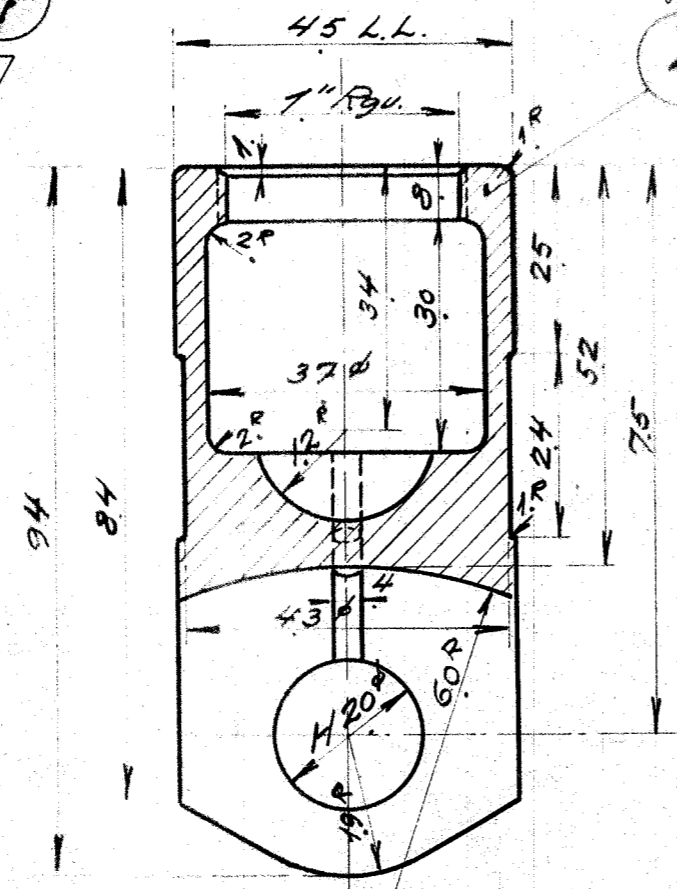
Snit B-B



Snit A-A



5 *hårdes og slibes*



Oven hårdes

5 *hårdes og slibes*

Smørekanal.

1	4	Kugleskaal	Poldi Staal	1 1/4" φ 260
2	4	Kuglestykke	"	1 1/4" φ 230
3	4	Rør	2 1/2" φ Staal	4.5ft x 7.65
4	4	Styr	0.10 Staal	2" φ 400
5	4	Rulle	Poldi Staal	1 5/8" φ x 100
6	4	Tap	"	7/8" φ 200
7	1	Ring	0.50 Staal	1 3/8" φ 15

<i>Dieselmotor 626 C.</i>	
<i>Ventilløftestanger for Løft og Udst.</i>	
R.	Gr. 8.
<i>A.S.</i>	<i>1:1. 626 C 8. 02.</i>
<i>15. 10. 31.</i>	