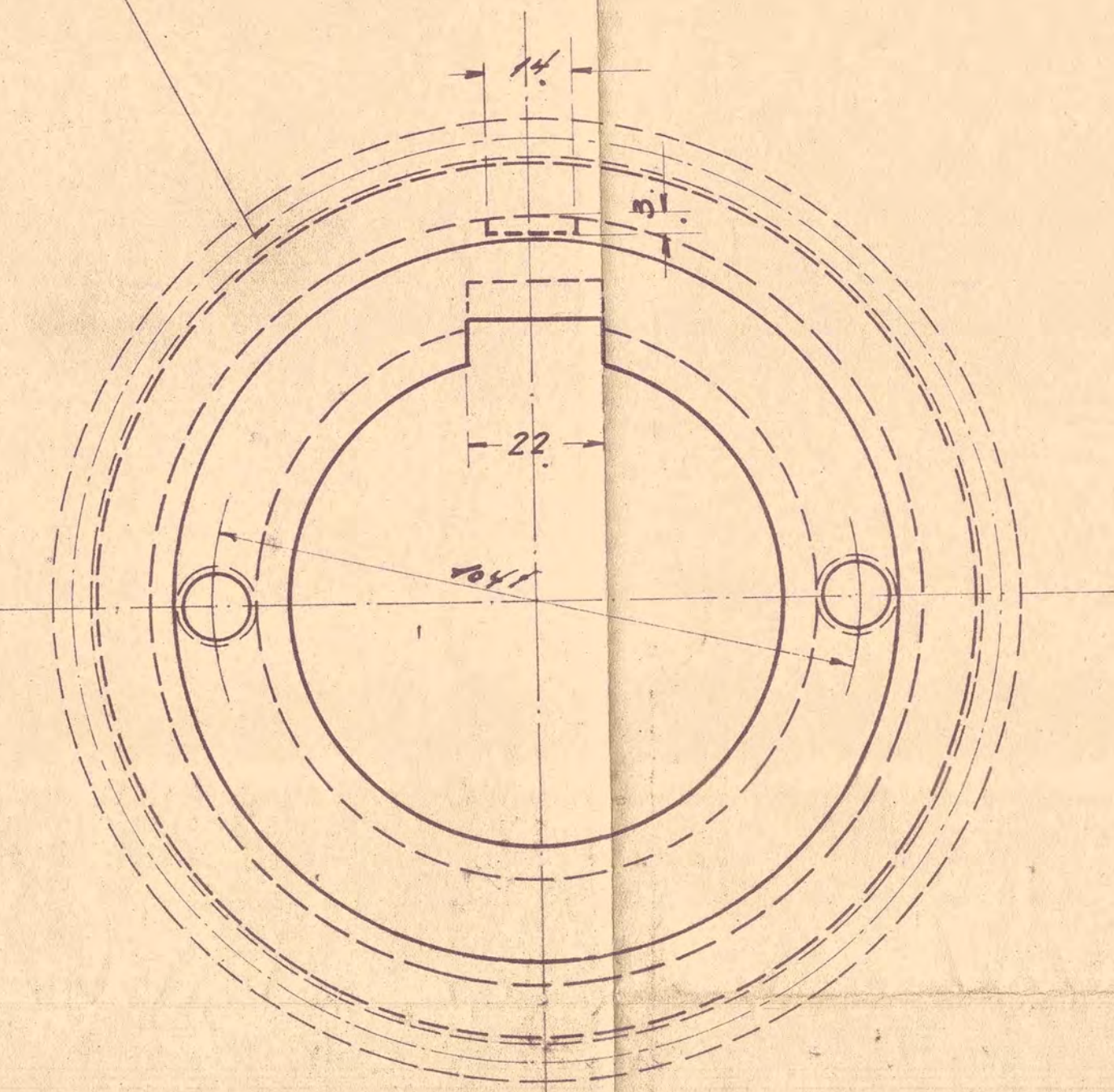
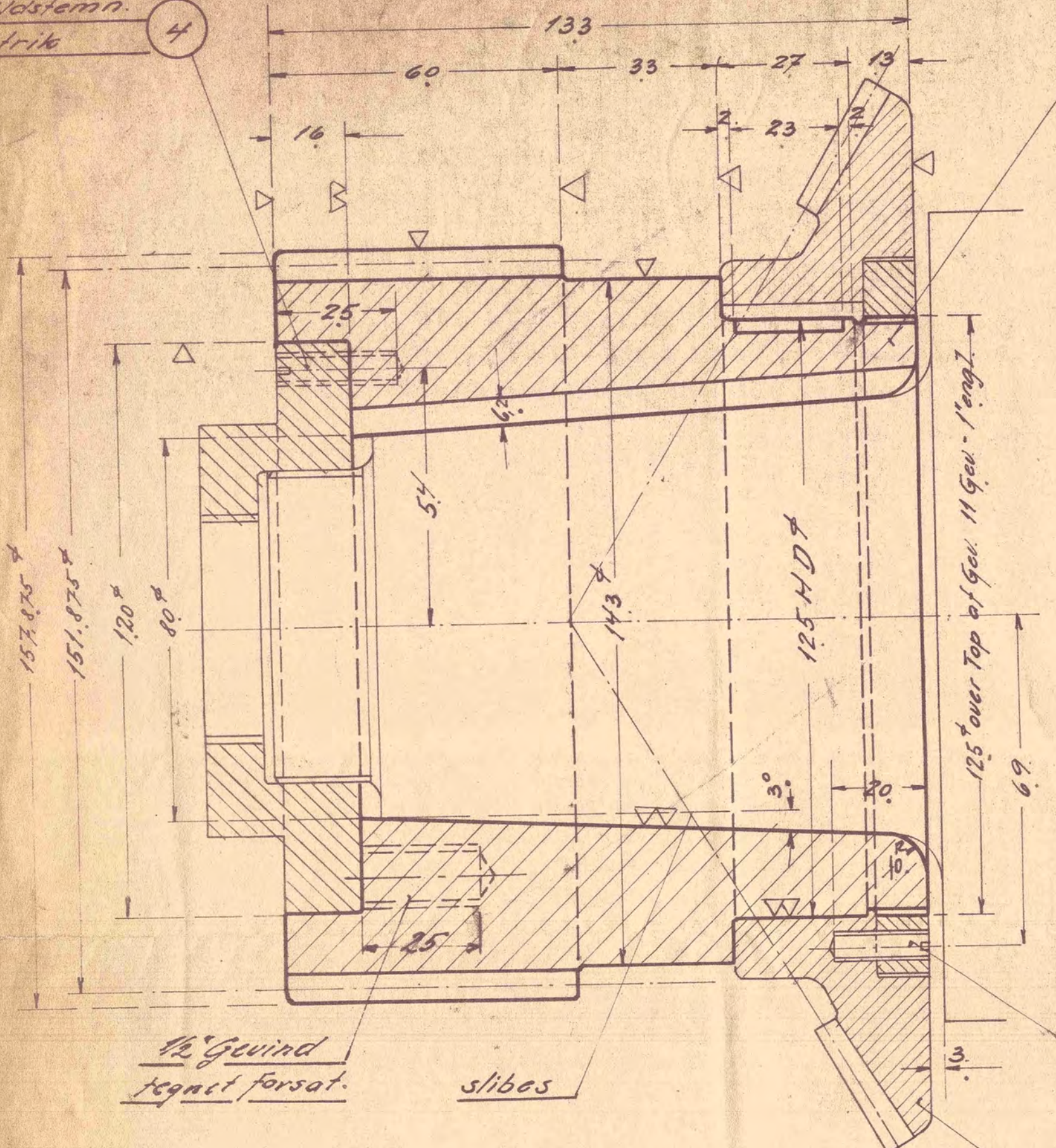


STYKLISTE	STYKLISTE NR 50039			INDERS TIL STYKLISTE NR.	
	GENSTAND	MÆRKE	MATE-RIAL	MODELL	MAÅL
1	Tandhjul	1	Chrom nickel Staal	149x16	
1	Matrik	2	Fluss jern	155x16	
1	do.	3	"	125x37	
1	Sikringskrue 1/4" 25	4	"	1/4" x 30	
1	do.	1/4" 20	5	1/4" x 25	

1/4" Skruer sikres ved Udstemning i Matrik

Omkredsmodul 3,0375.
 Normalmodul 3.
 Delediam 151,875.
 1 Tandental 50.
 Stigningsvinkel 81° (højreskaaren)
 Best. Tegn. 626 C 5.14a

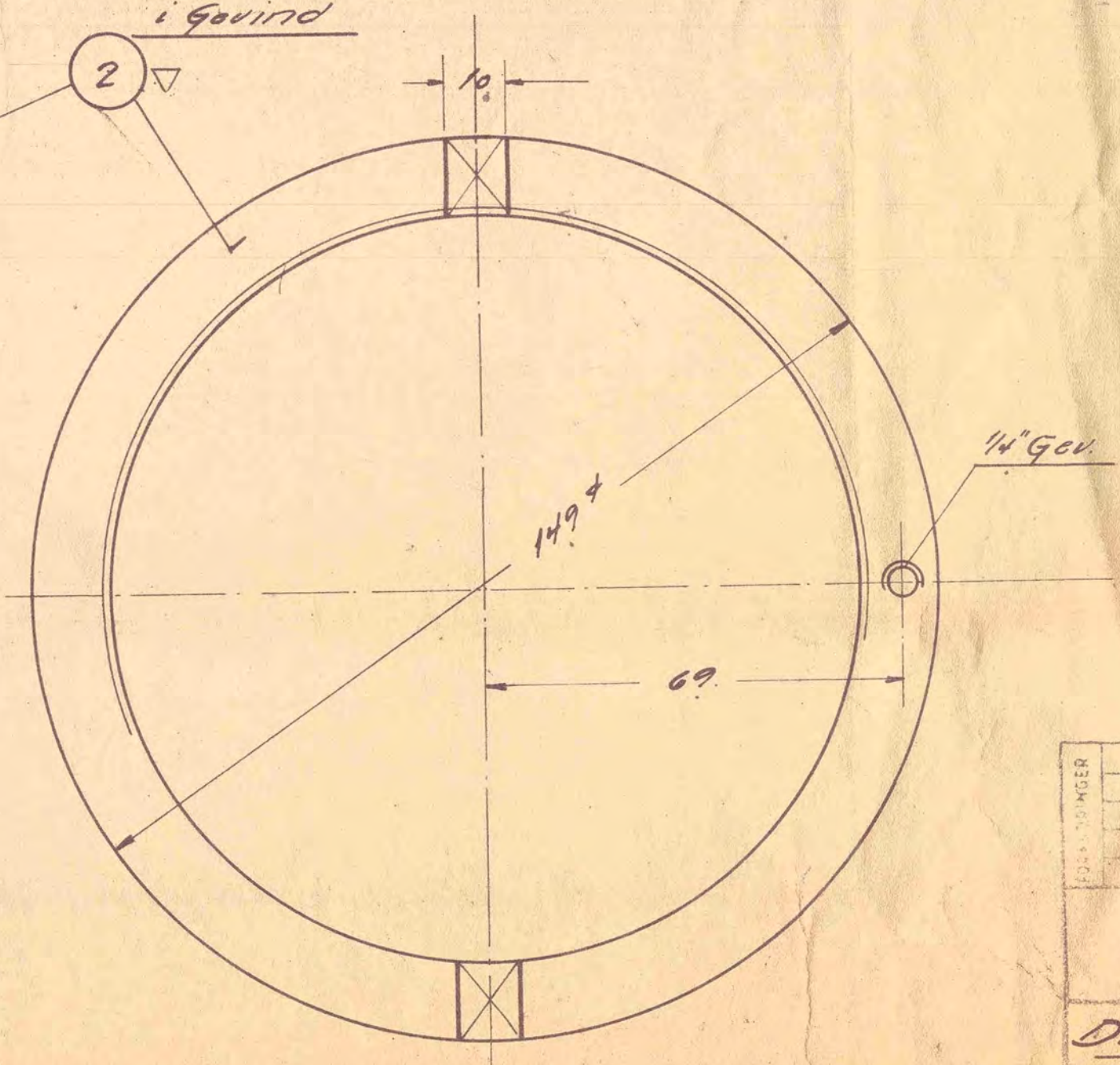
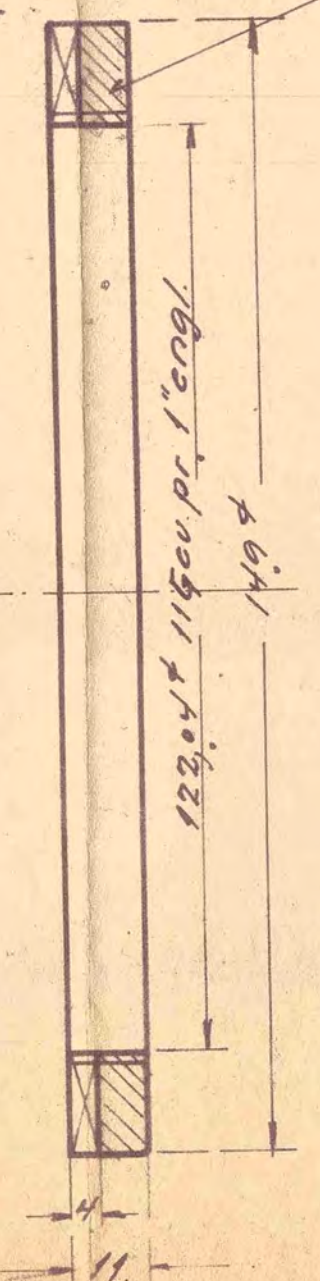
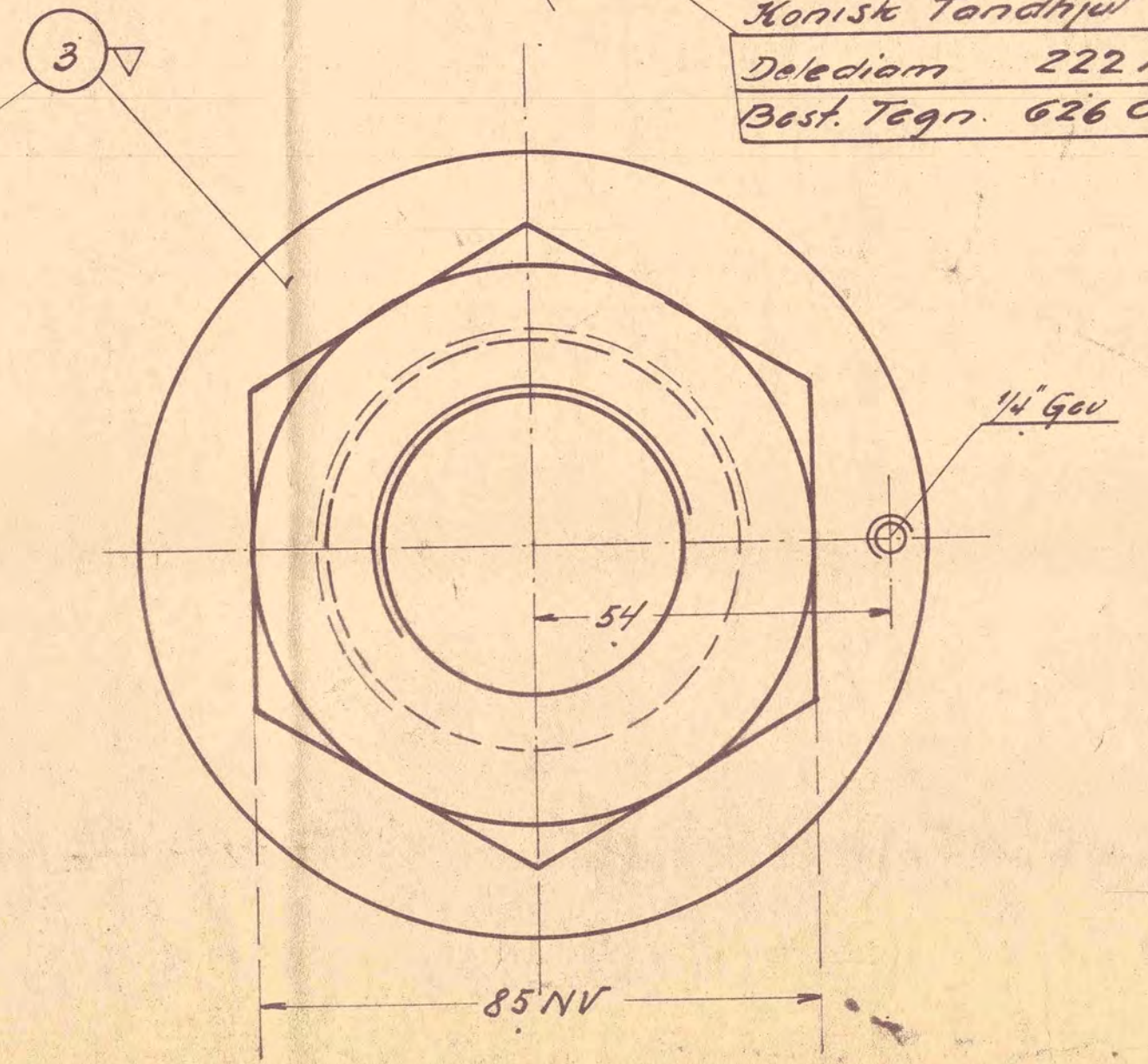
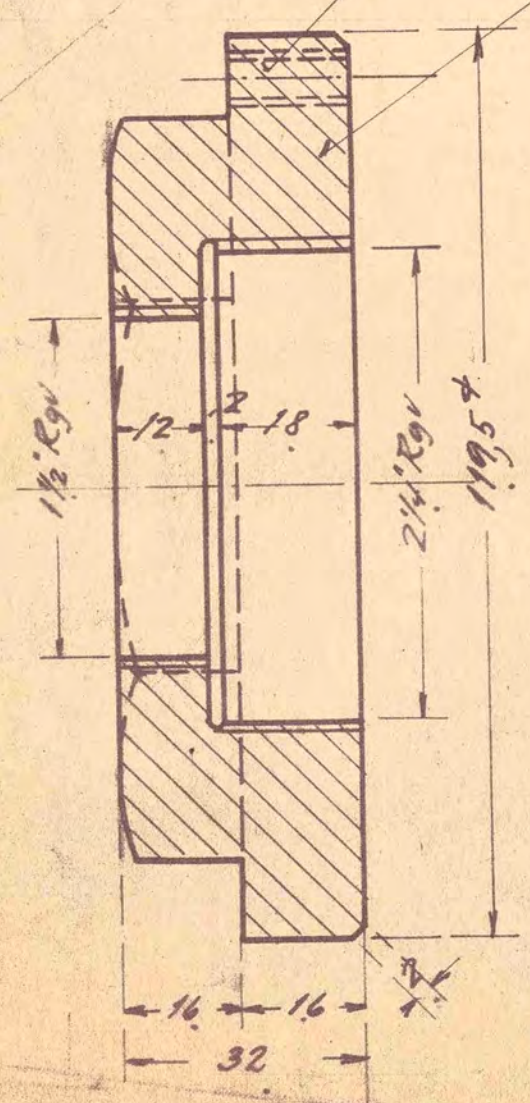


5 1/4" Skruer sikres ved Udstemning i Matrik.

Matrikken skal passe stramt i Gevind

Konisk Tandhjul 74 Tænder.
 Delediam 222 mm.
 Best. Tegn. 626 C 5.25

1/4" Gev. tegnet forsat



A/S FRICHS AARHUS	TEK. 1:1	TEK. 1:1	TEK. 1:1
	Dieselmotor 626C		
	Drev for frømtapaxsel		
626 C 5.07		TEK. 1:1	
a		TEK. 1:1	

19-6-36