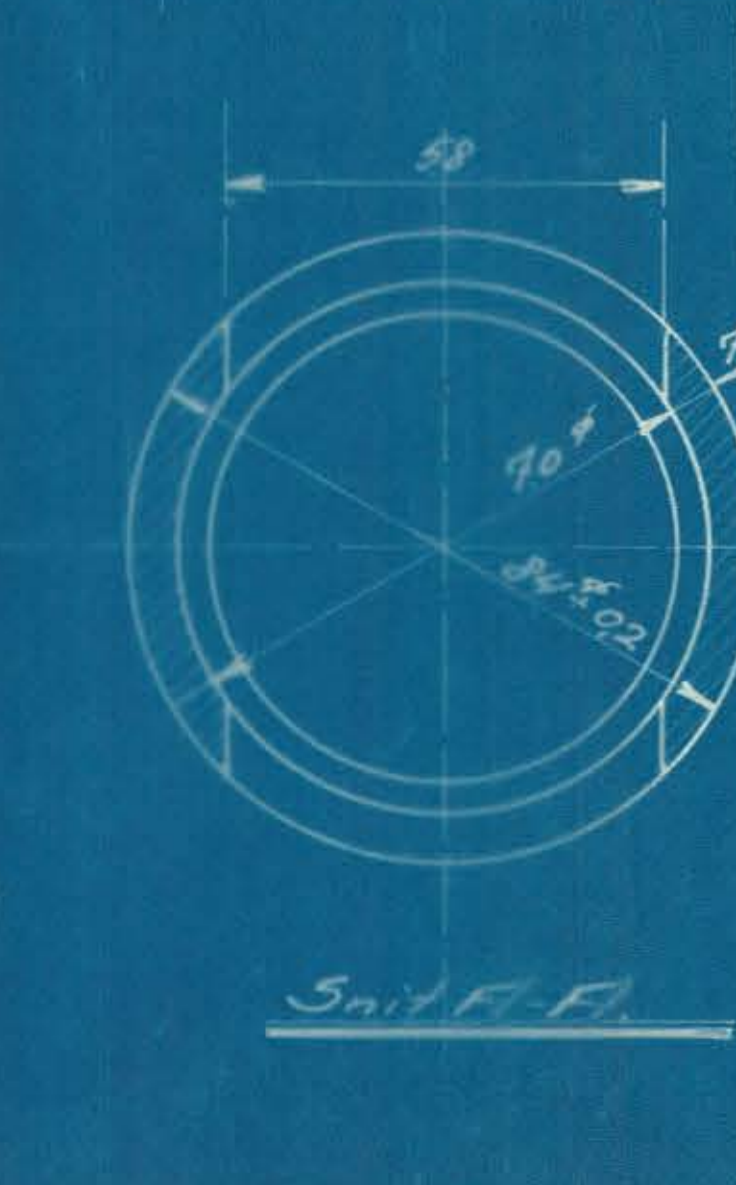
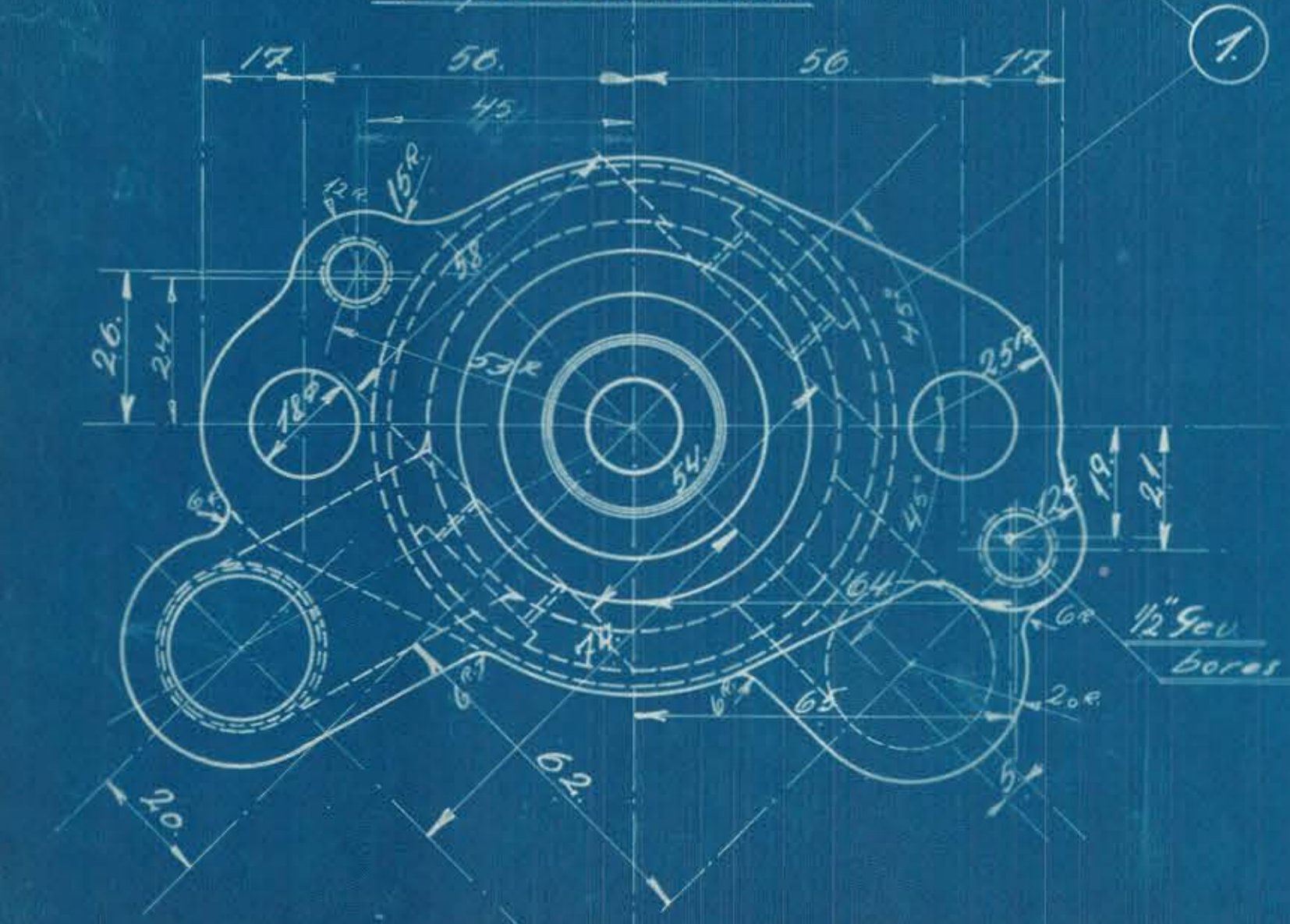
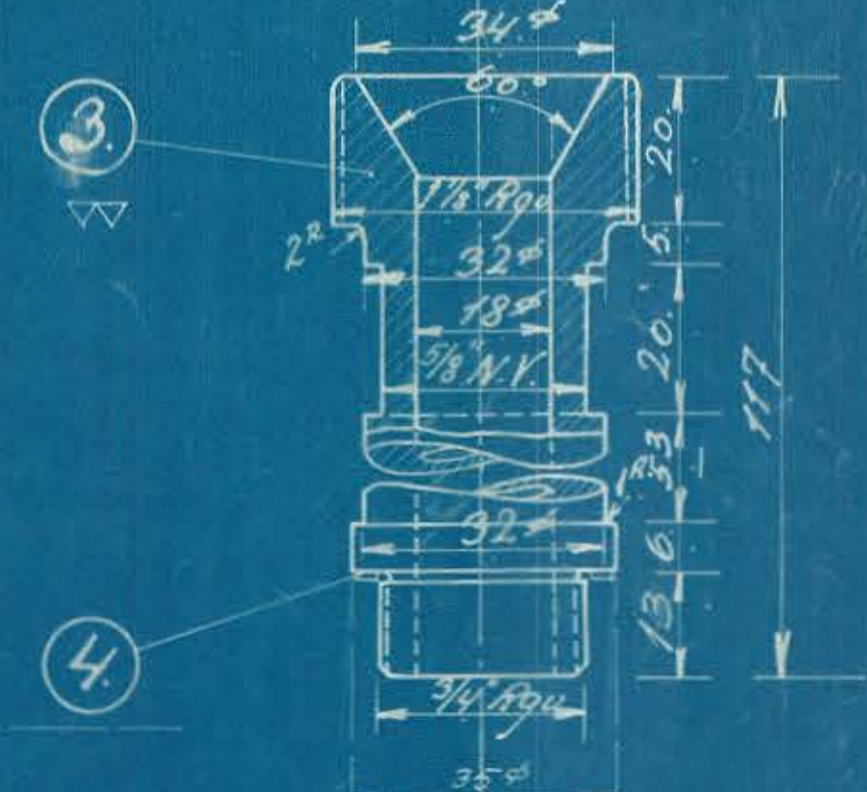
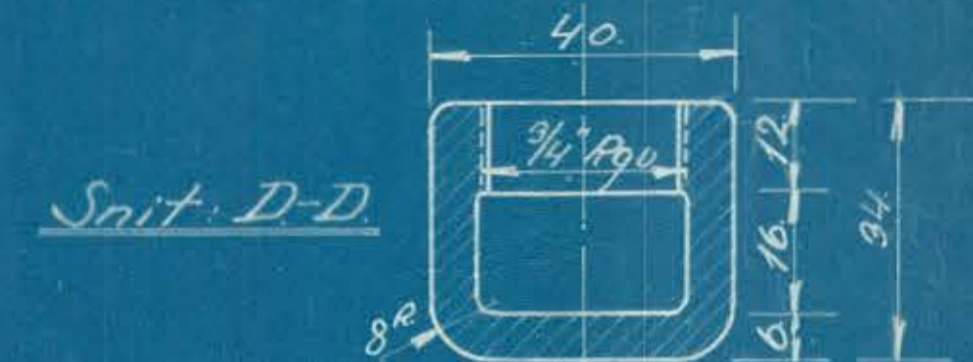
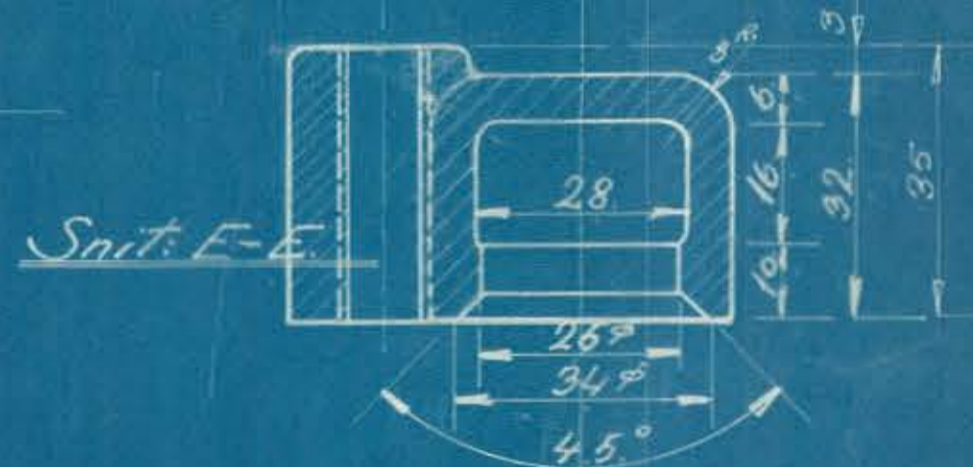
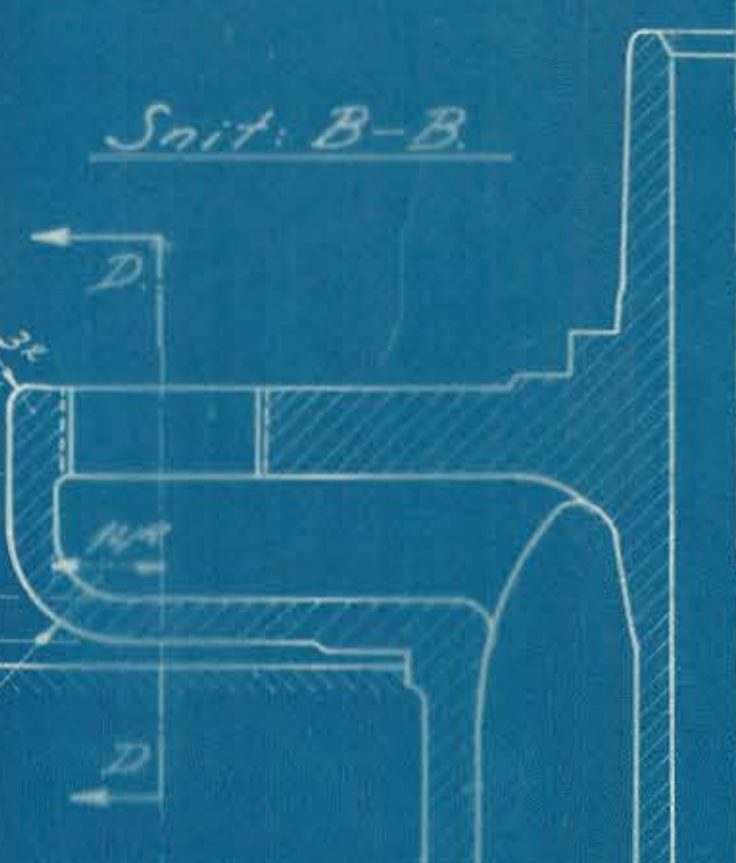
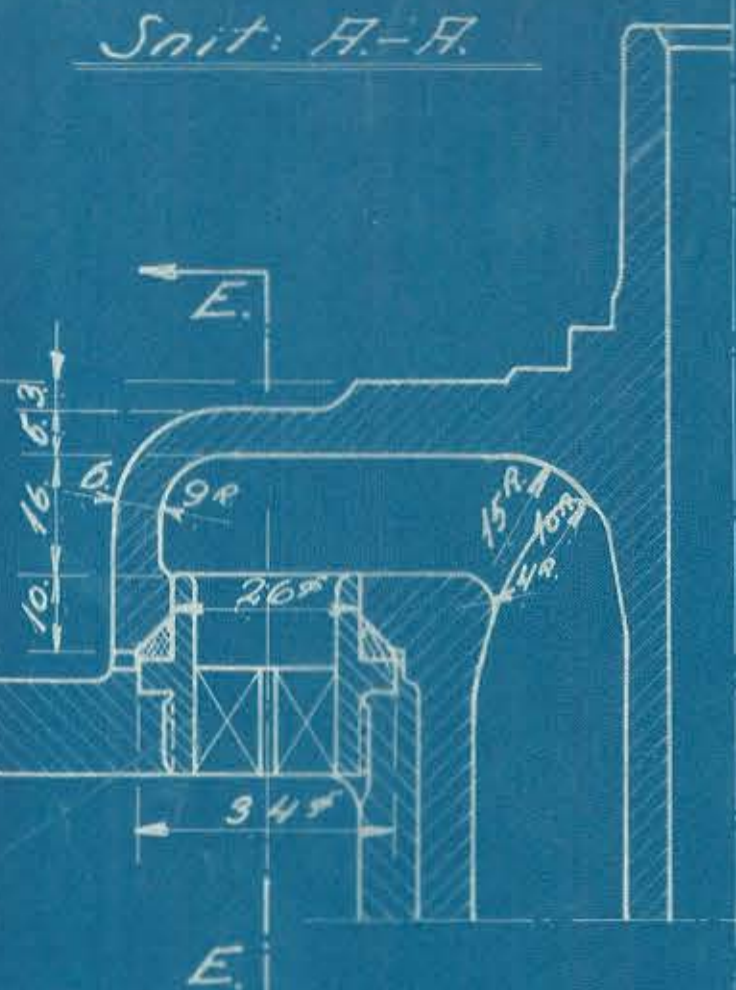
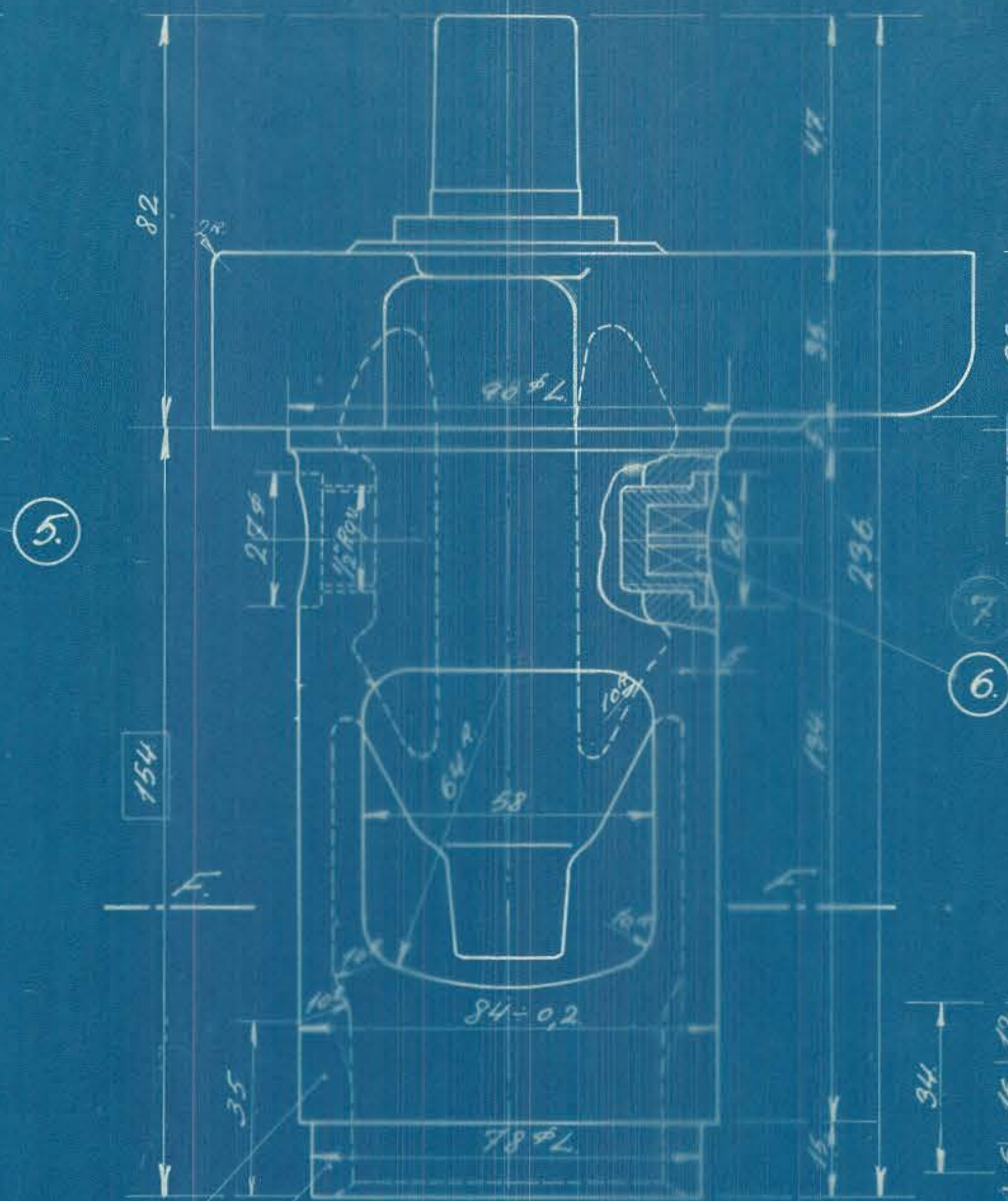
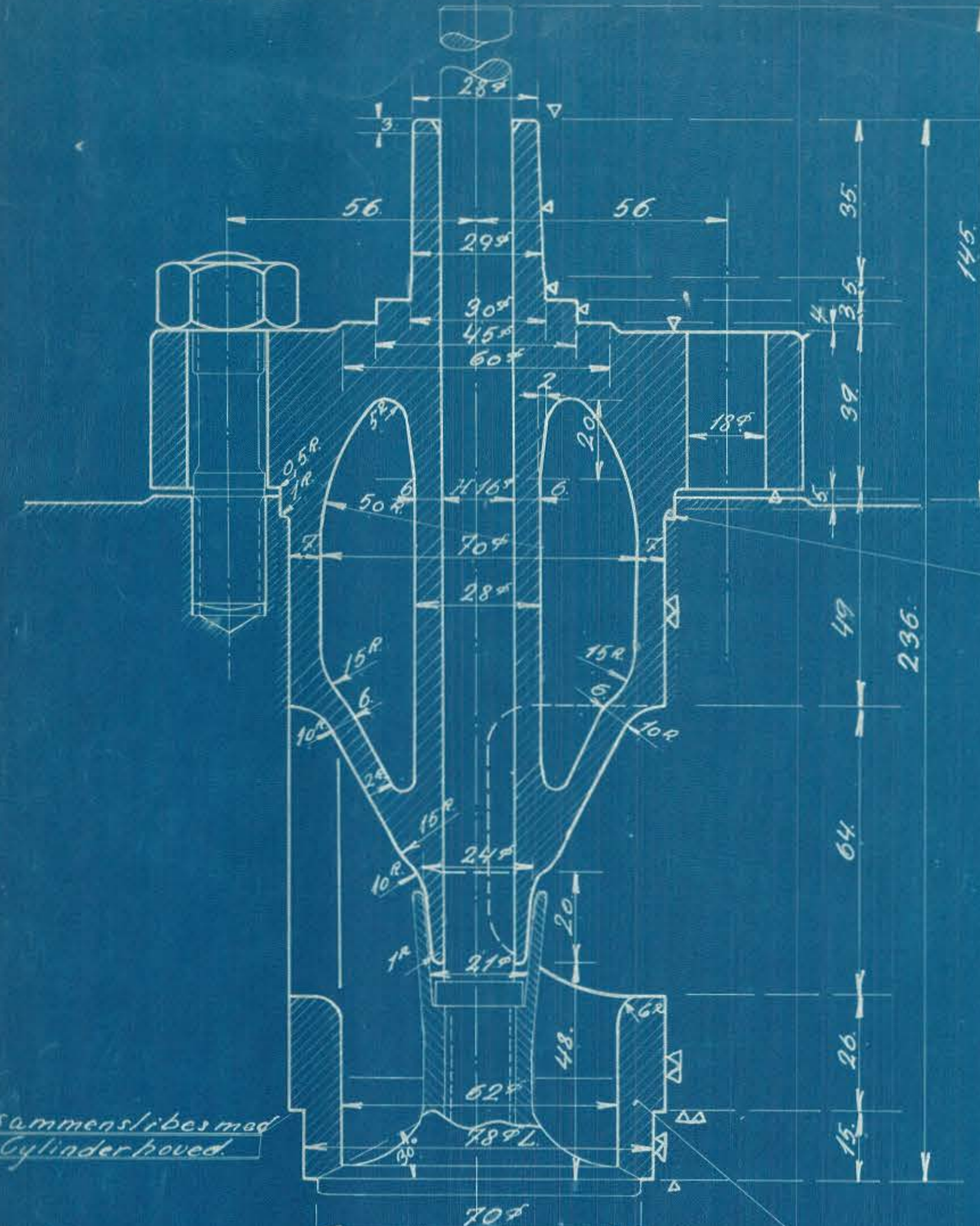


49981.

1.	1.	Ventilhüs höjre	Stål	626 C	4.03
2.	1.	do. venstre	Stål	626 C	4.03
3.	2.	Nipler	Muntal	1 1/2"	1/2"
4.	2.	Patninger	1/34"	Magasin	
5.	2.	do.	1/34"	Magasin	
6.	4.	Kærnepropper	1/34"	50 8X1.	
7.	2.	Gennemgængende	1/34"	50 8X1.	
8.	2.	Patninger	1/34"	Magasin	



VEFRICHS AARHUS
 Dieselmotor 626 C
 Udstød. Ventilhus. -
 Rigtigtap
 3-8-31. 1.1. 626 C 4.03