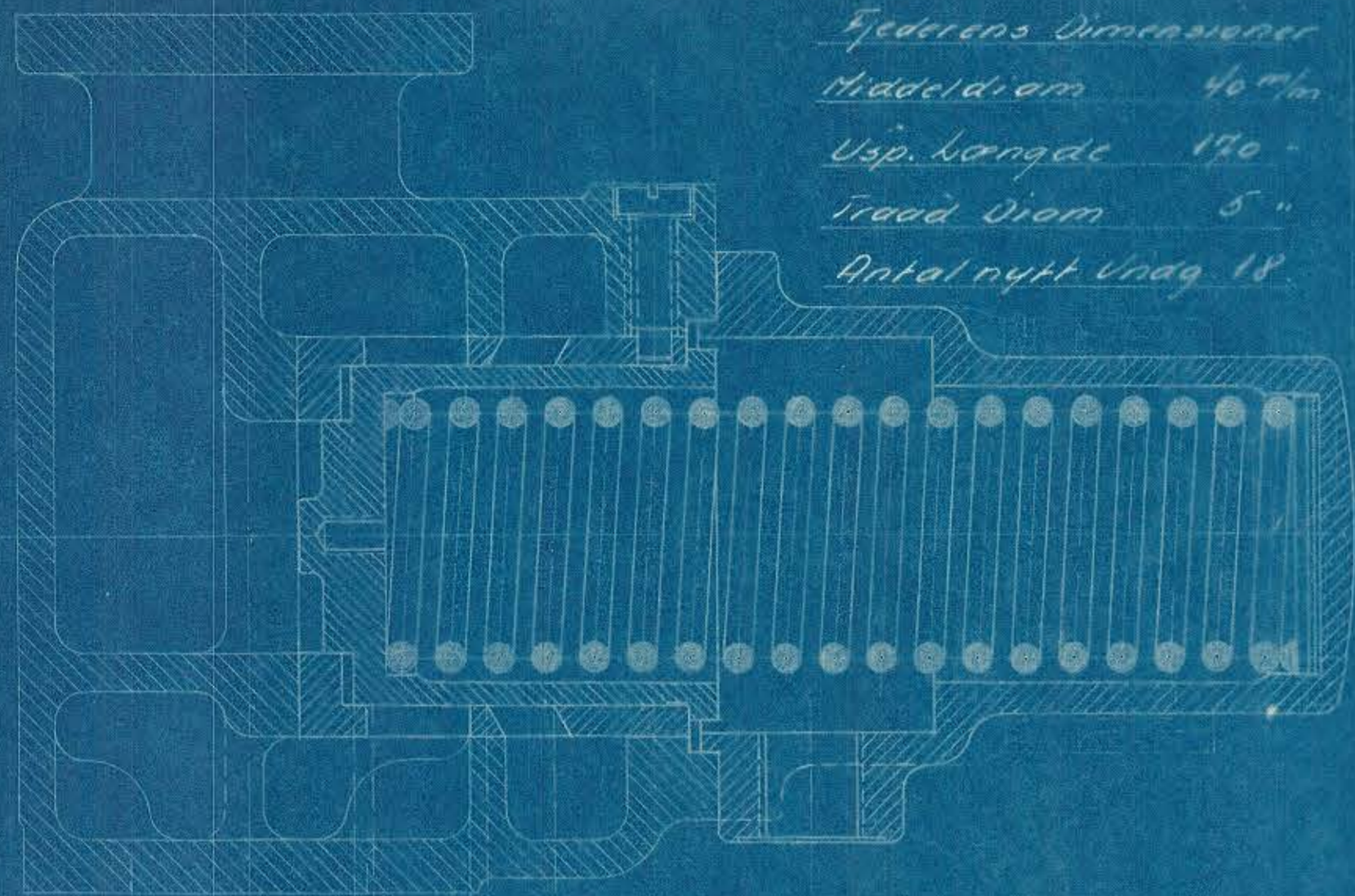


Fjederens Dimensioner  
 Middeldiam 40 mm  
 Usp. længde 170  
 Tråd Diam 5  
 Antal nytt Vindg 18

Best. Tegn.  
 6X 288.



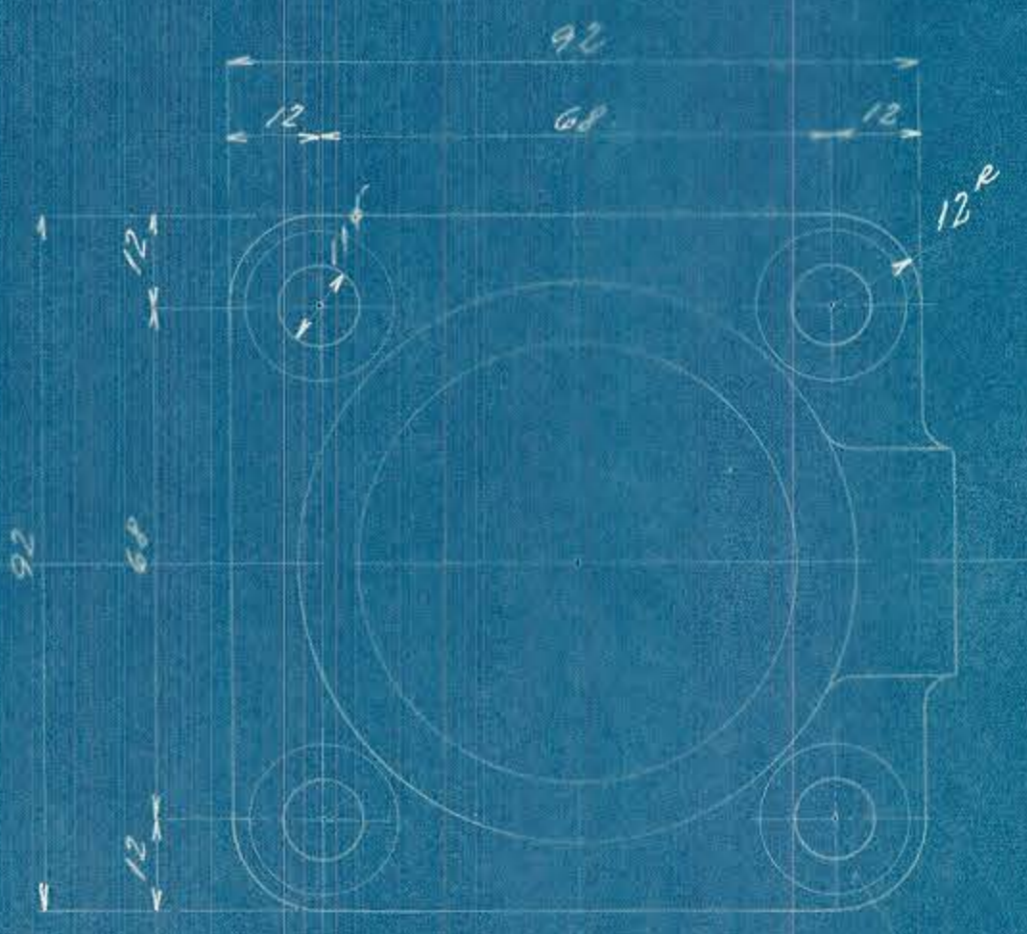
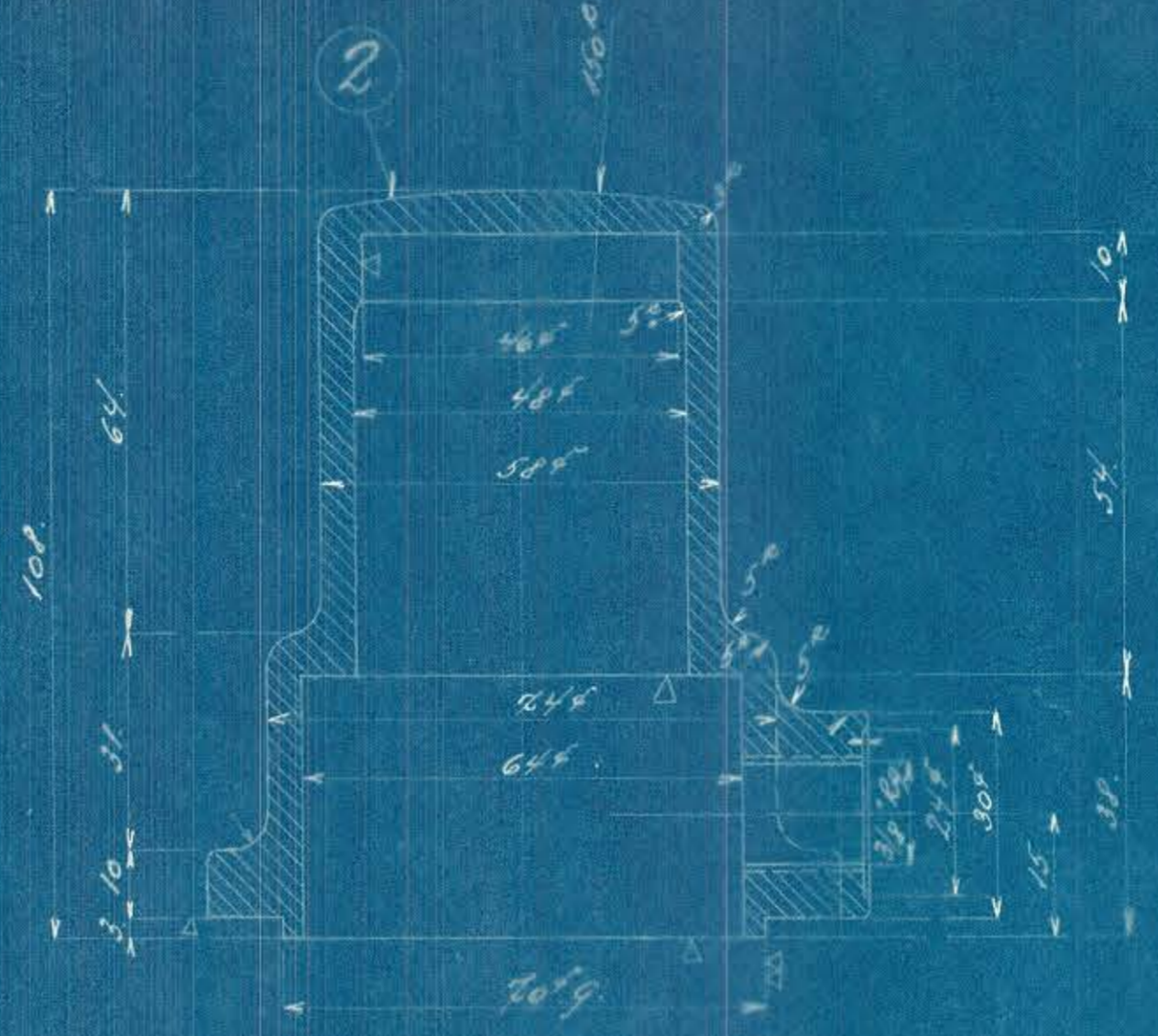
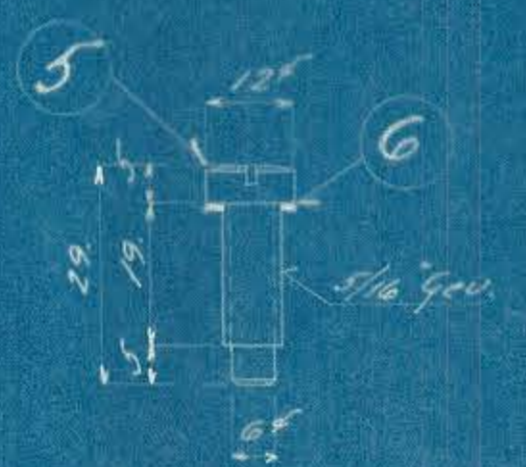
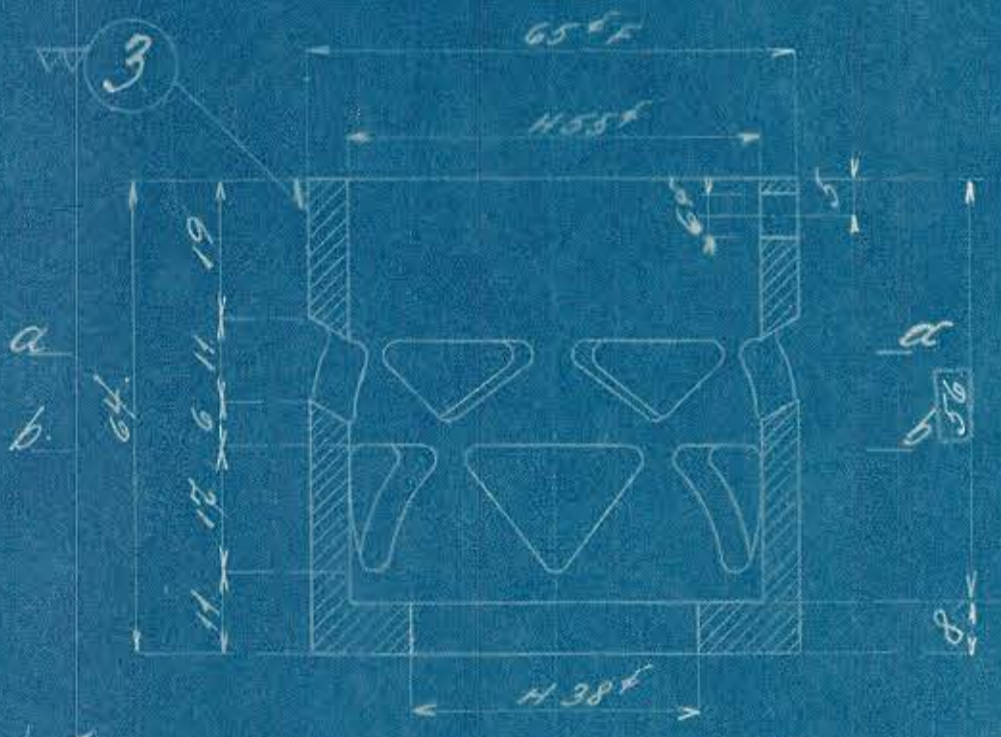
12

9-10-11

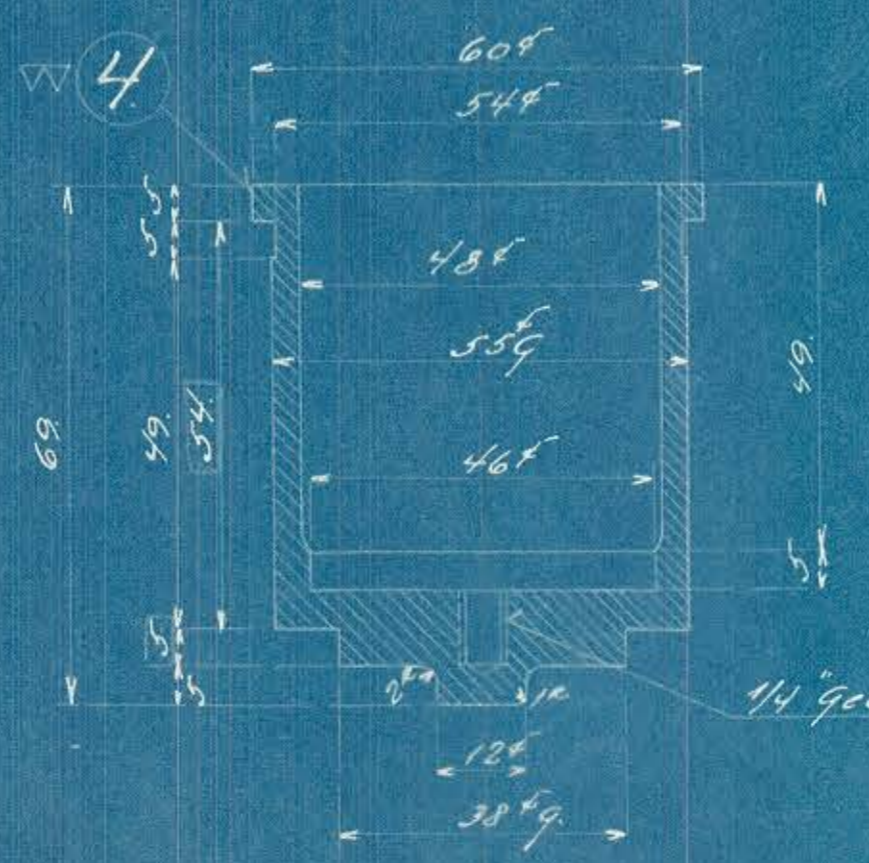
1. slet Høllenslag 2mm  
 1. " " 1mm  
 2. " " 0.5mm



2.2  
 15.3  
 9.9  
 2.2  
 15.3  
 9.9  
 1  
 2.2  
 9



Ansvar: 20 x 0.5



44 gev. 10 dyb.

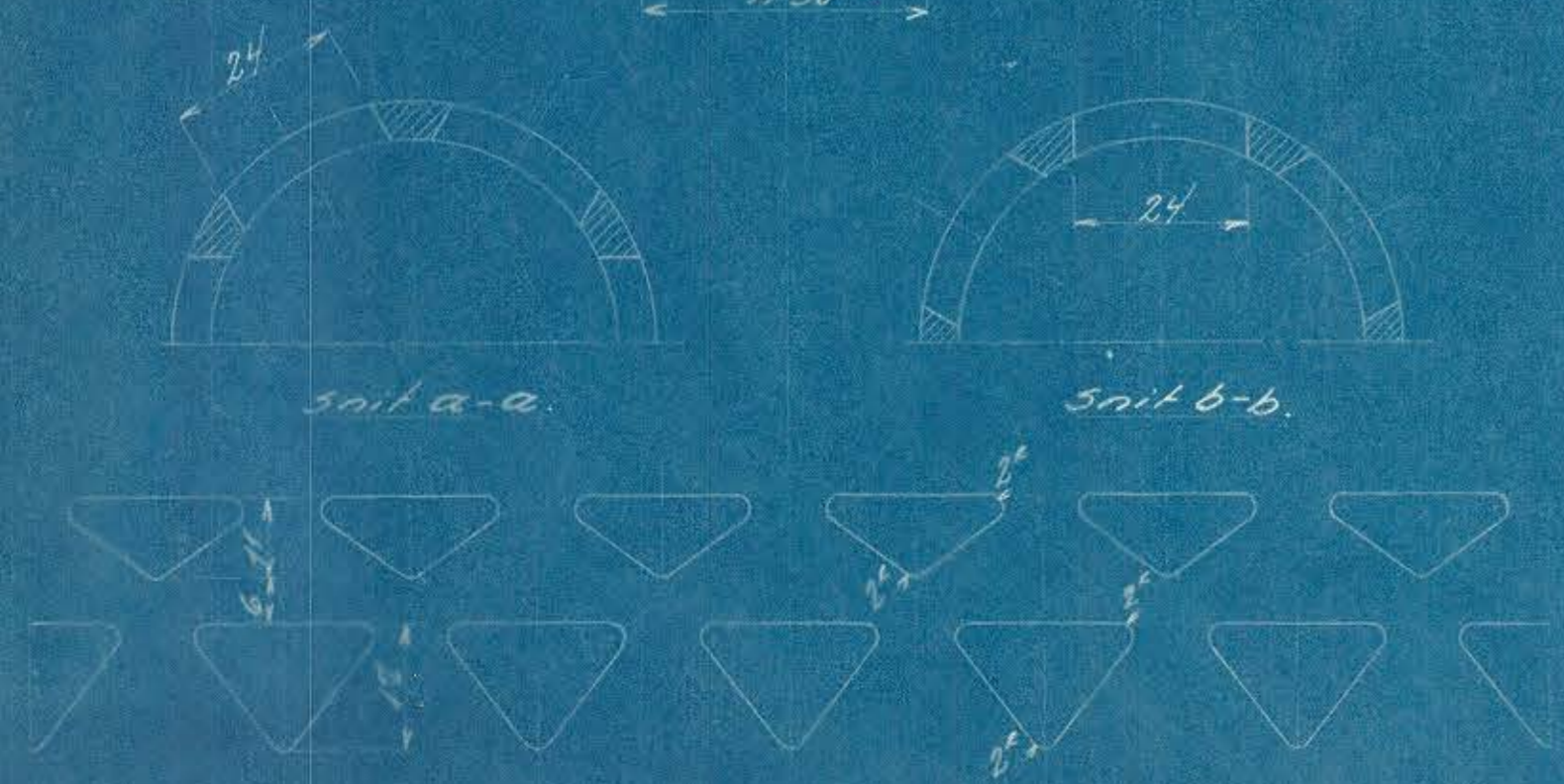
STYKLISTE NO.			
MÅK. KE	ATM	BETEGNELSE	MATE. BEHÅR. MIDDEL

Stykliste Plan I.

Plan II

A/S FRICH'S AARHUS  
 Dieselmotor 626 C.  
 Reguleringsvent for Tryk sm. led.

REVISION	1:1	626C.13.65
DATE: 28-7-32		



Udfoldning af Cyl. Hoved.