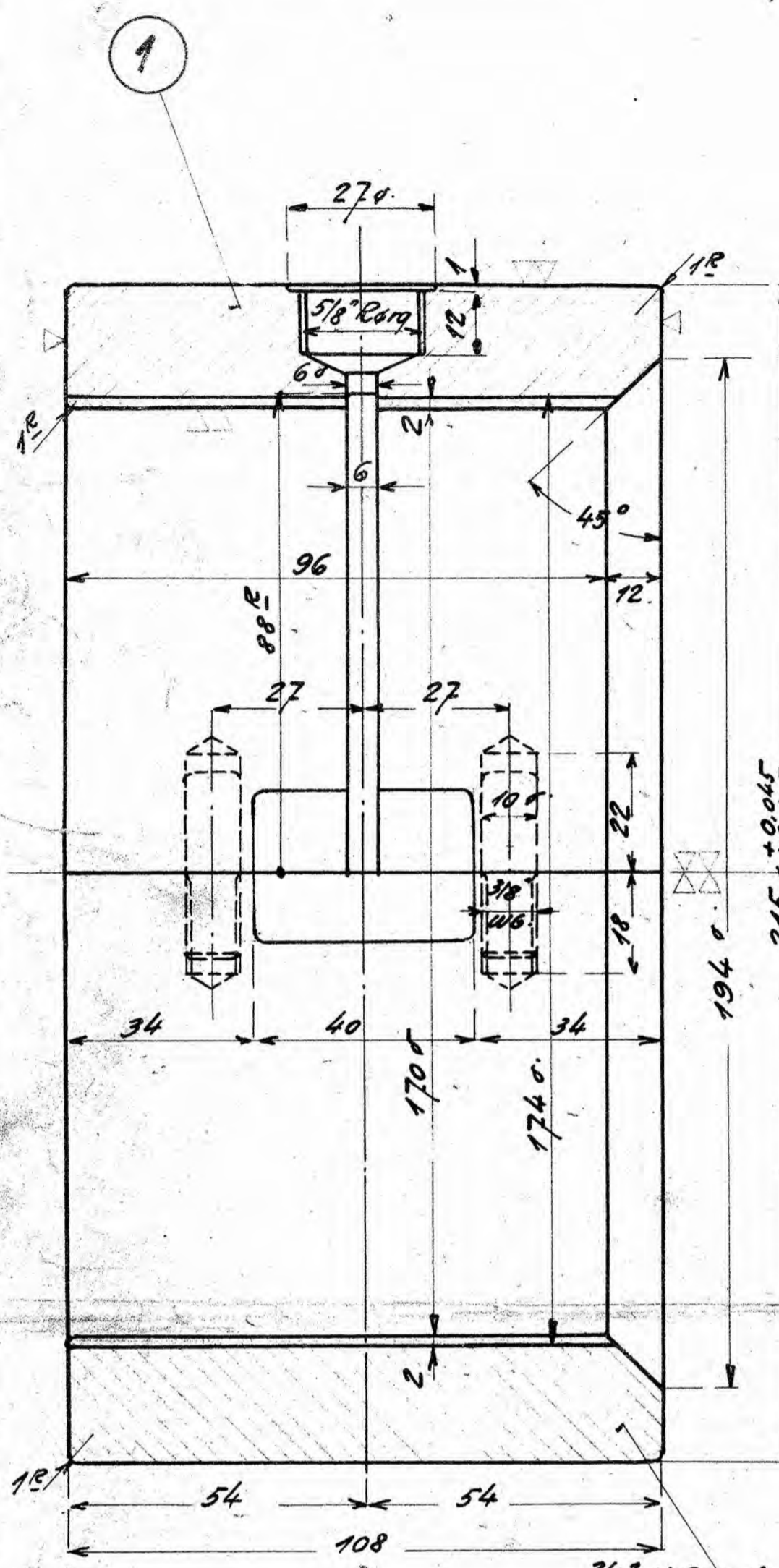
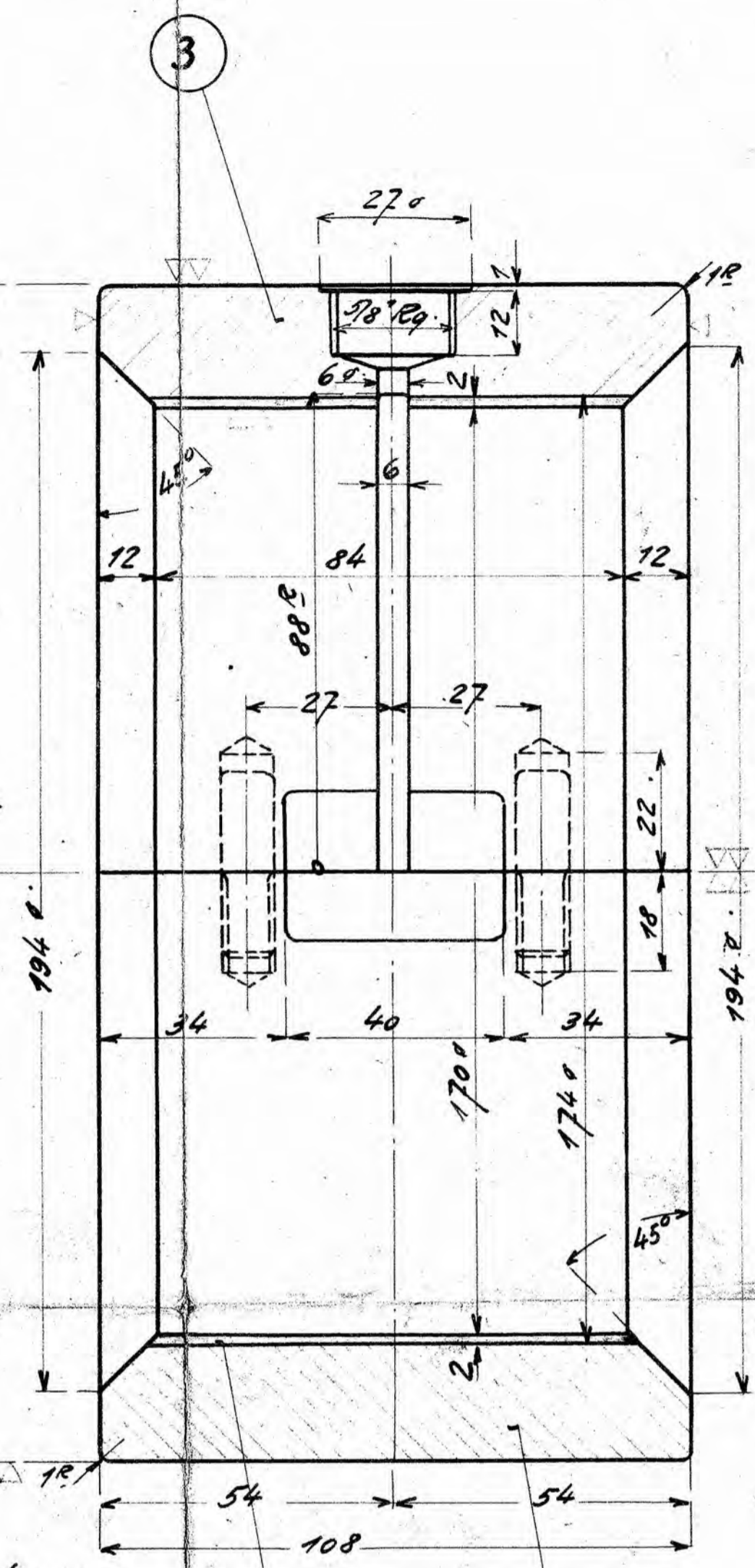


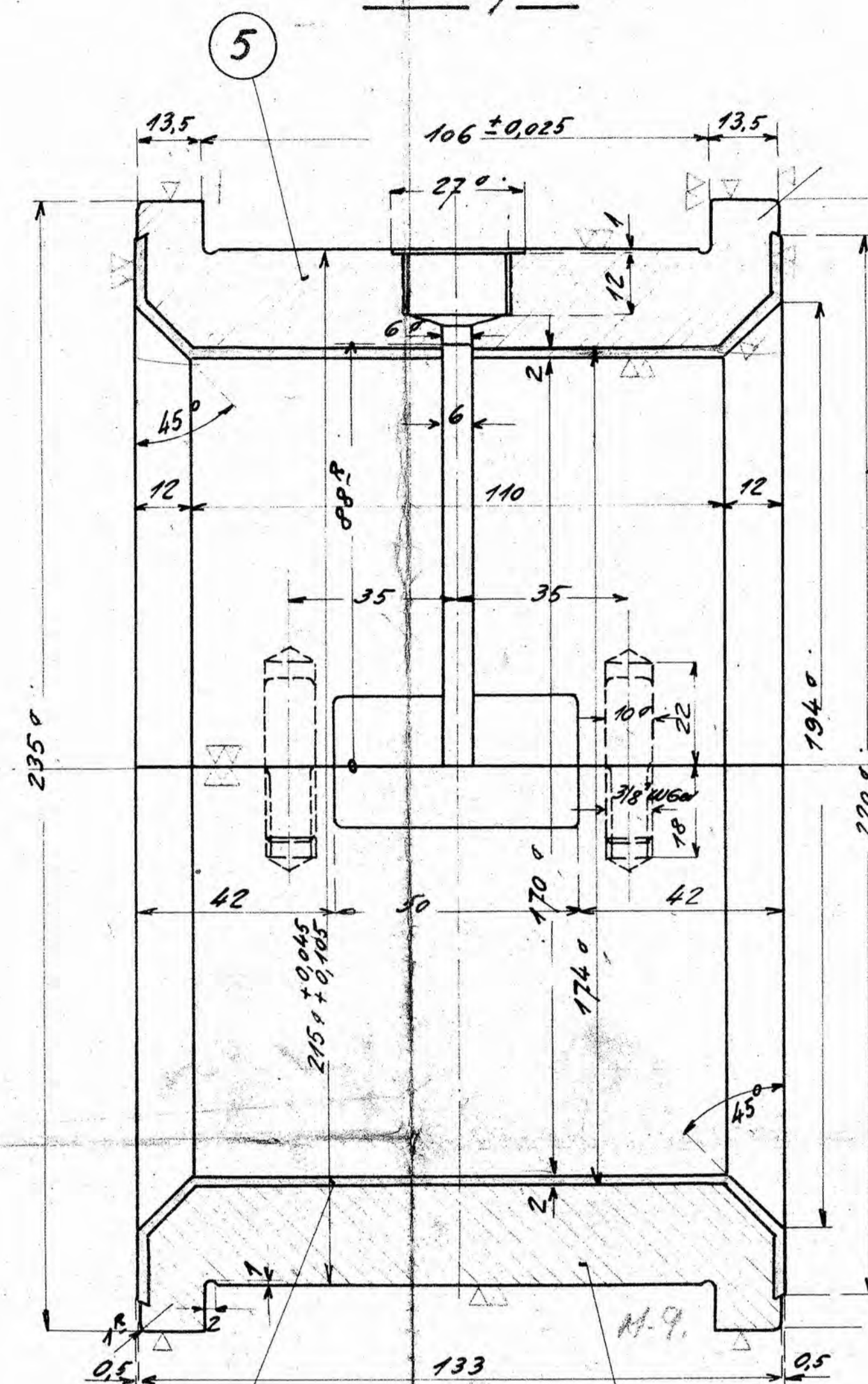
Leje Nr. 1.



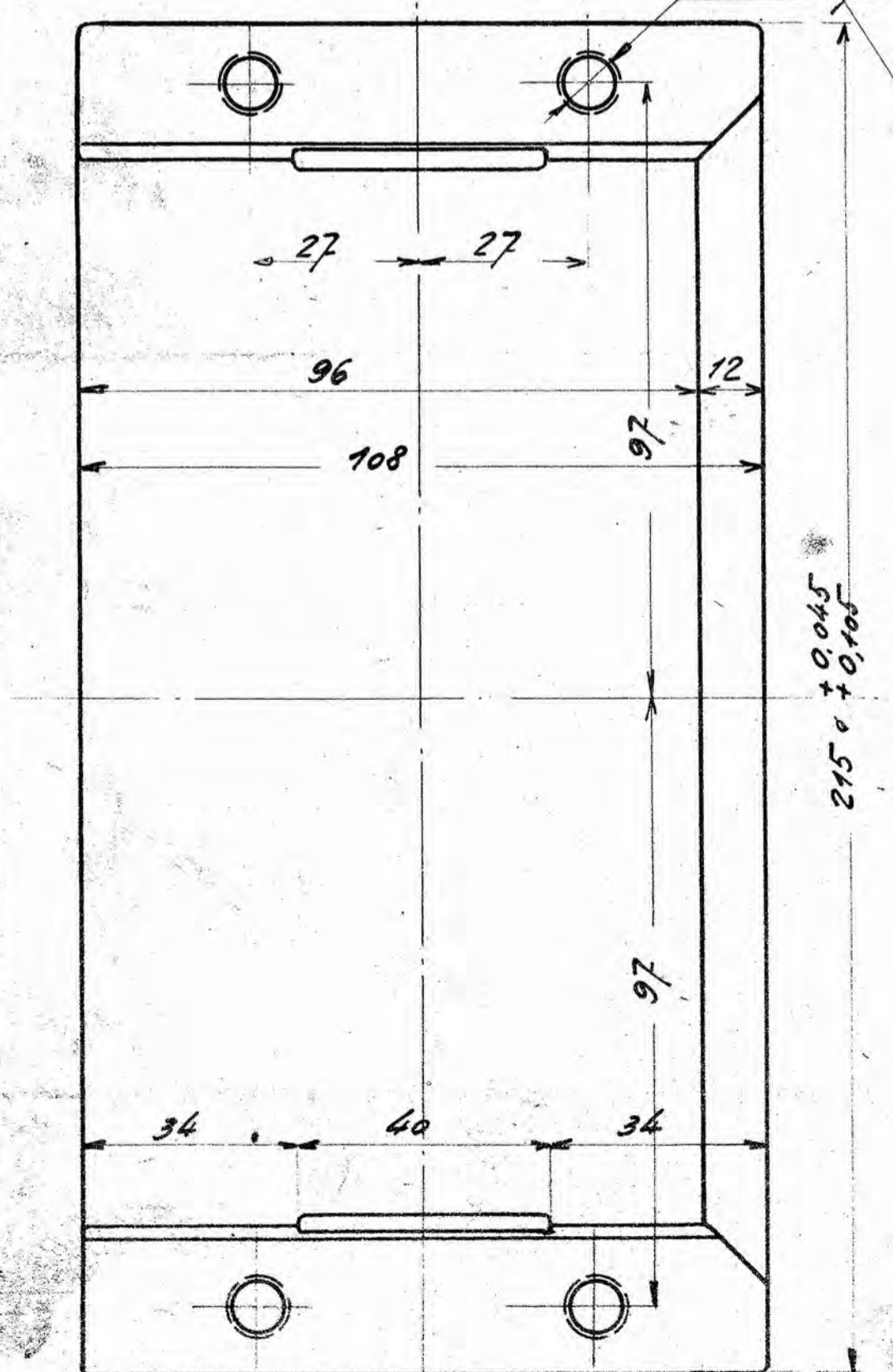
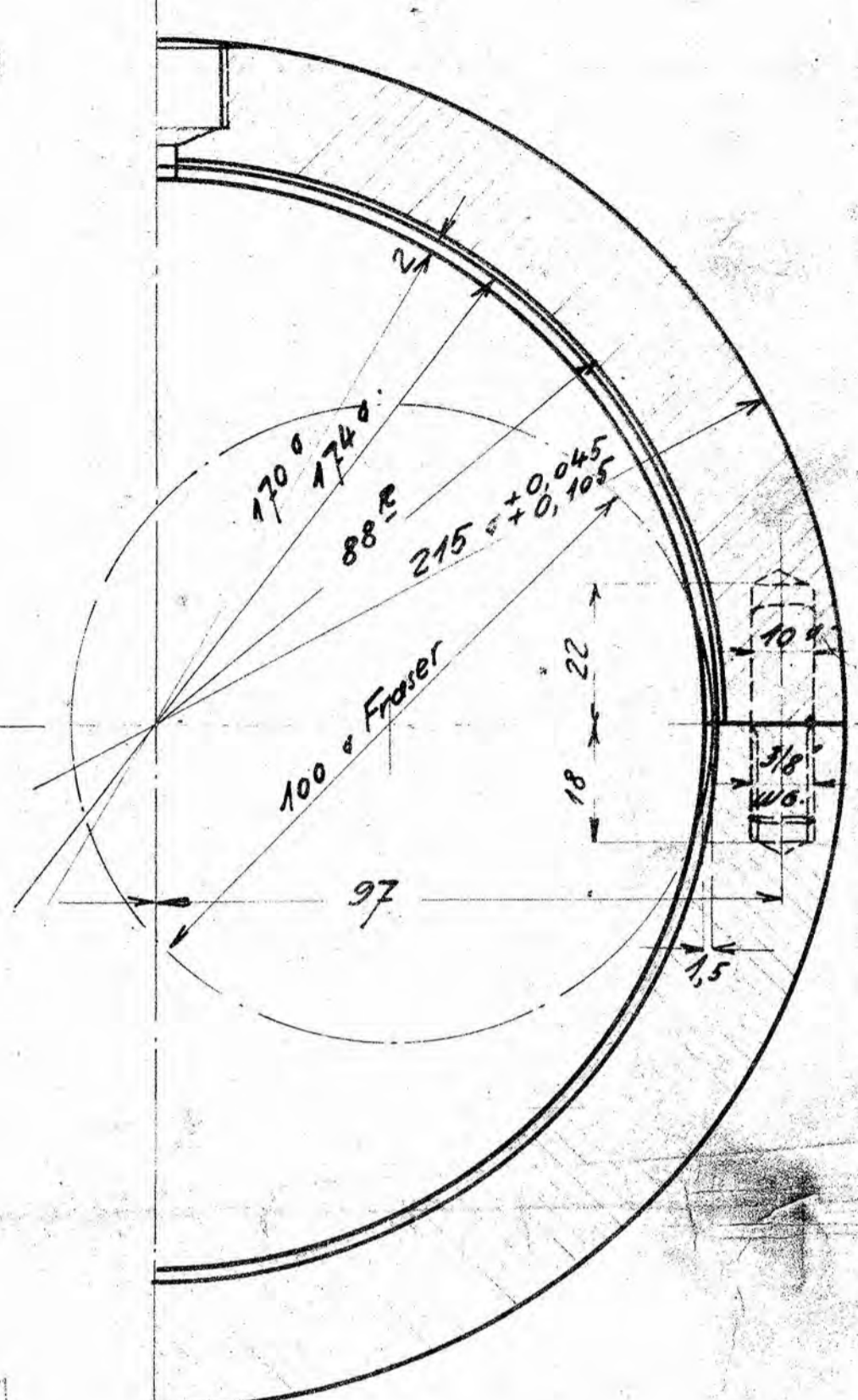
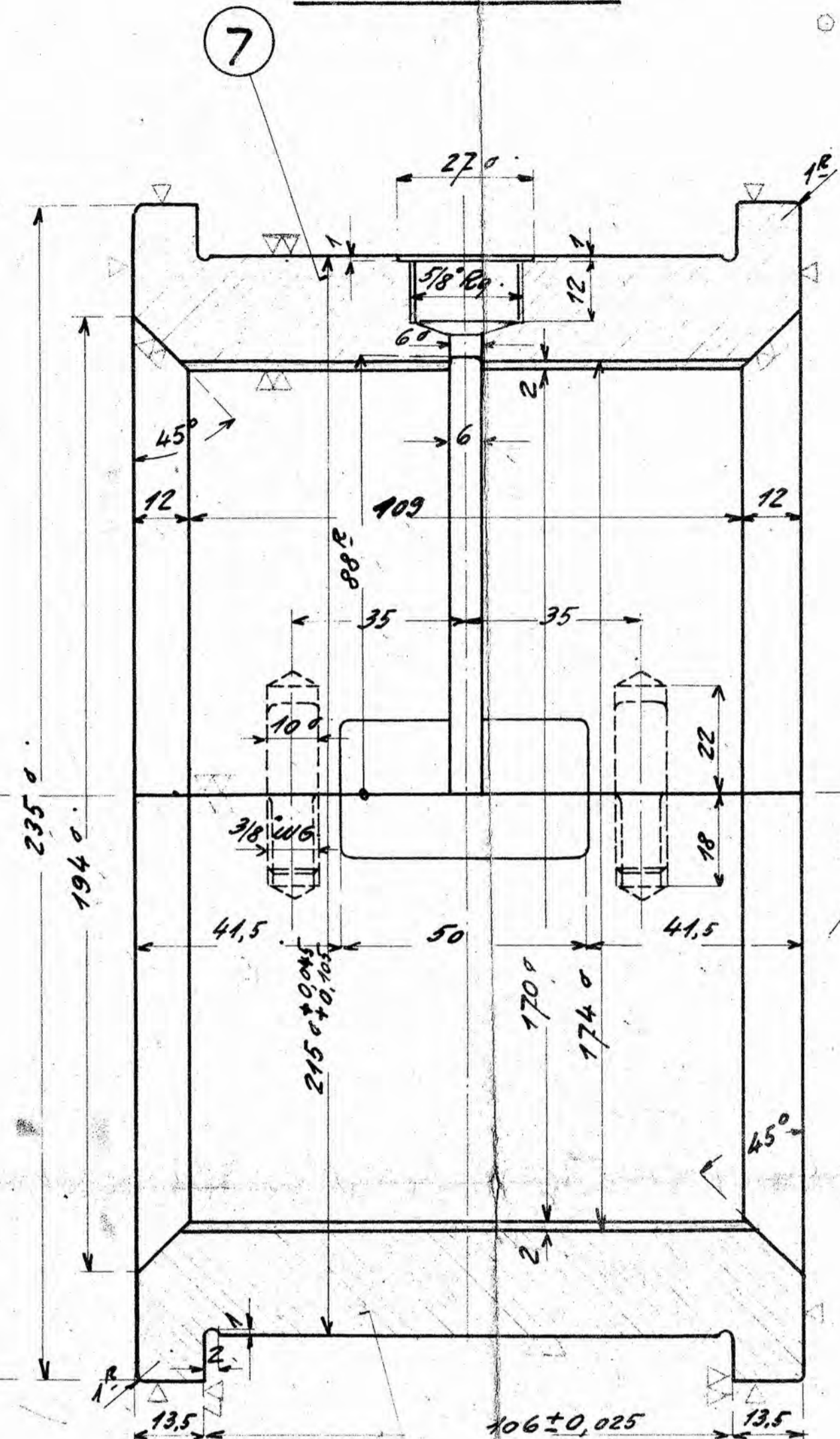
Leje Nr. 2-3-5 og 6.



Leje Nr. 4.
Pasleje.



Leje Nr. 7.
ved Generator.



3/8" W. Ger. for Styretop.

Panderne finbores i Bundramme.
Lejespillerum + 0,12 min.
+ 0,16 max.

	10		Magasin
Hvild. Metal.	9		
1 Underpande L = 133 mm	8	Staal gods.	626 C 1.02
1 Overpande L = 133	7	"	"
1 Underpande L = 134 mm	6	"	"
1 Overpande L = 134 mm	5	"	626 C 1.02
4 Underpande L = 108 mm	4	"	626 C 1.02
4 Overpande L = 108	3	"	"
1 Underpande L = 108	2	"	"
1 Overpande L = 108 mm	1	Staal gods.	626 C 1.02
S.P.	10.12.47		1:1.

Lejedaksler etter Teqn. Nr.: 626 C - 1.25. a
Hovedlejebolte " " - 1.05.
Smørestuds " " - 13.14.
Styretappe " " - 1.07.

Dieselmotor 6260 CL 3441

Hovedlejepander. 6260 CL - 1-02