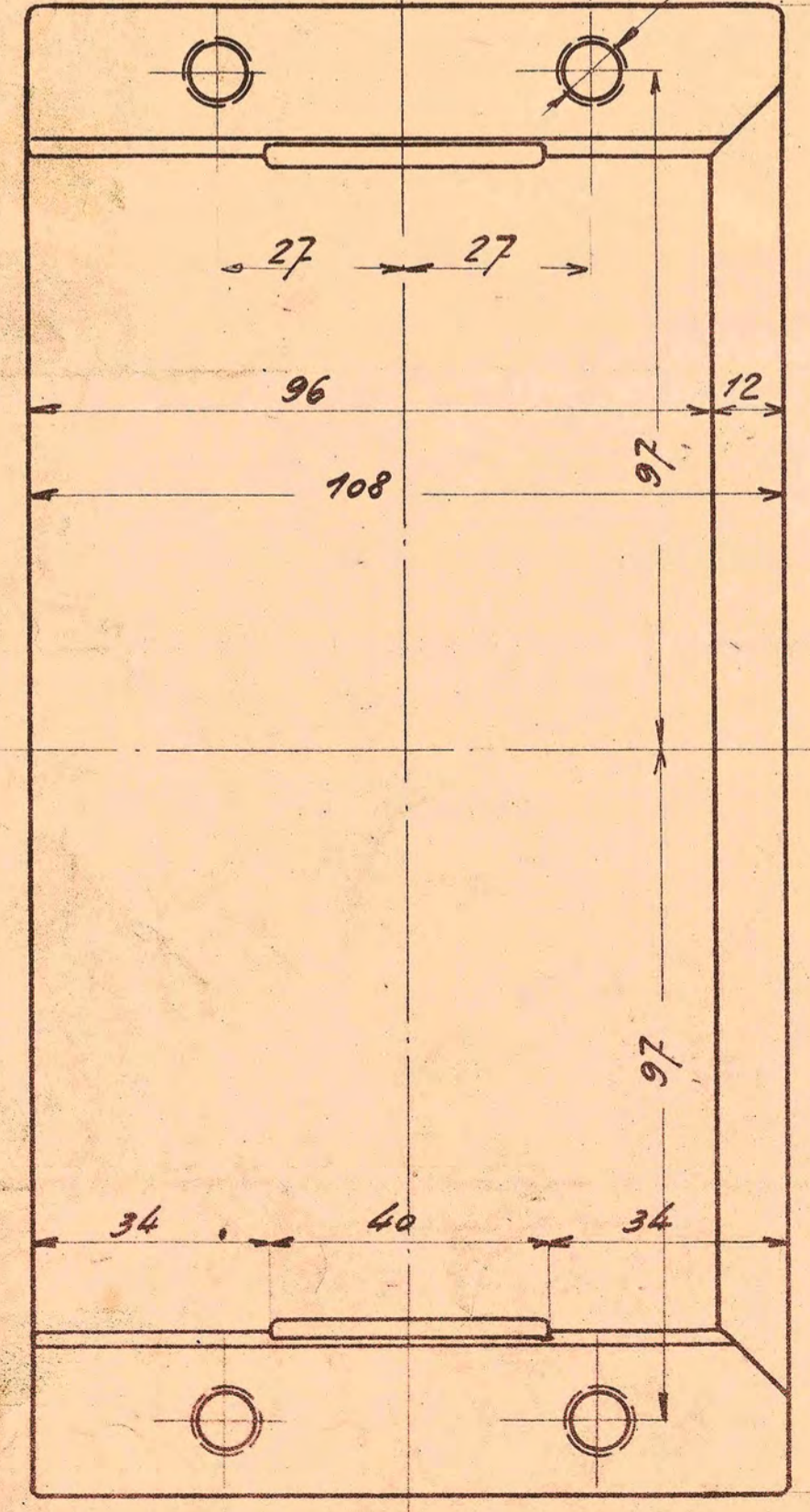
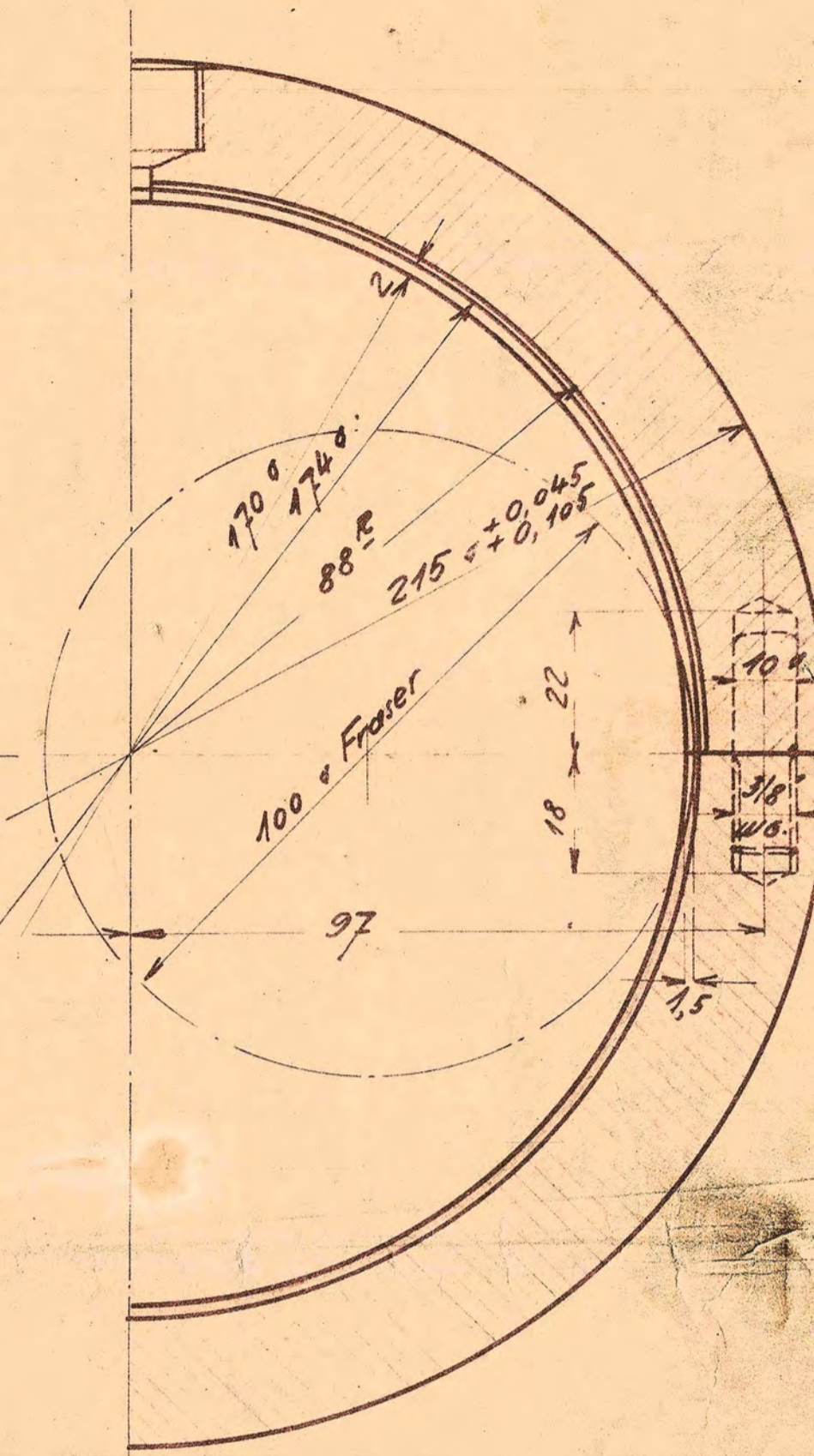
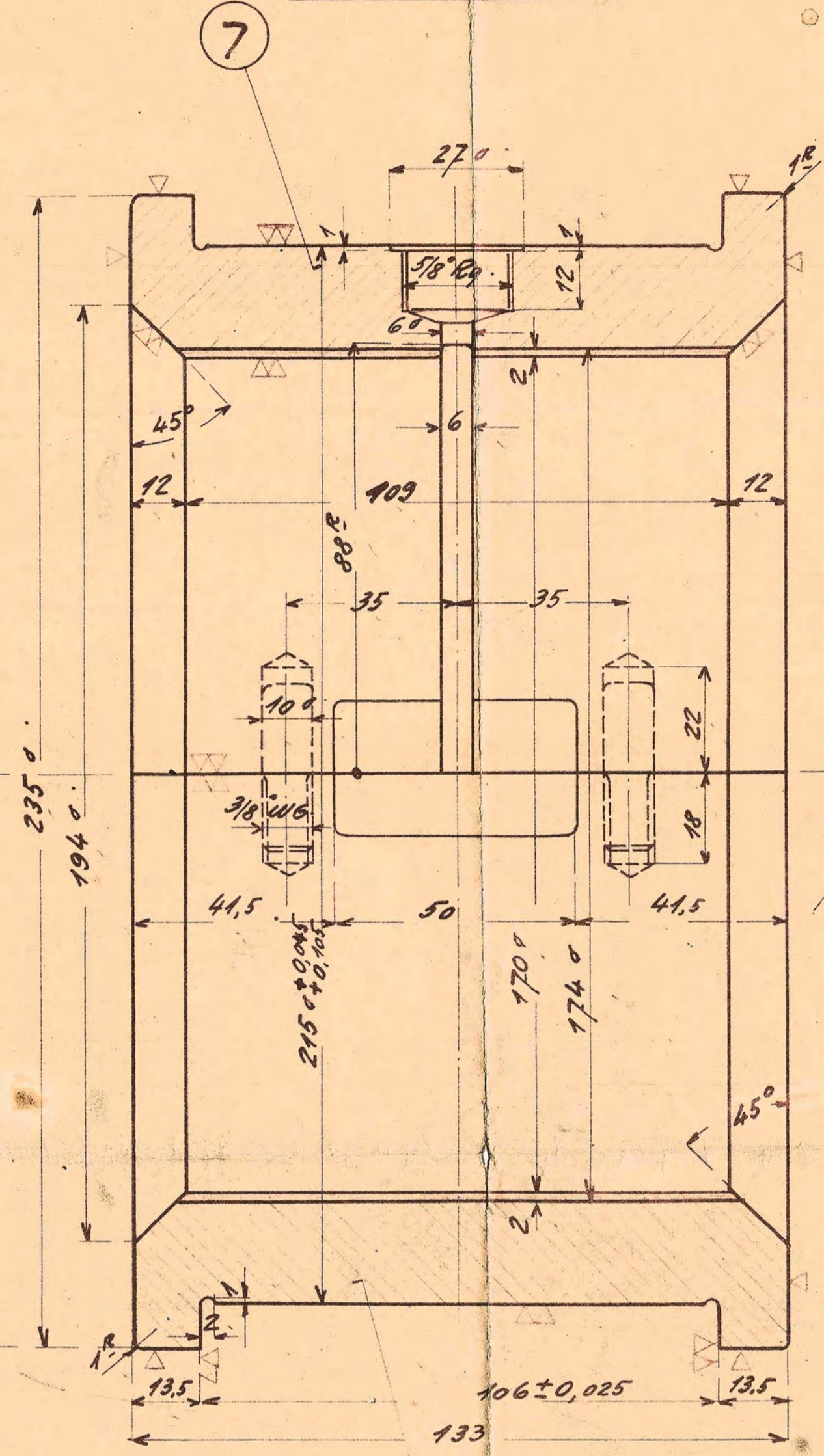
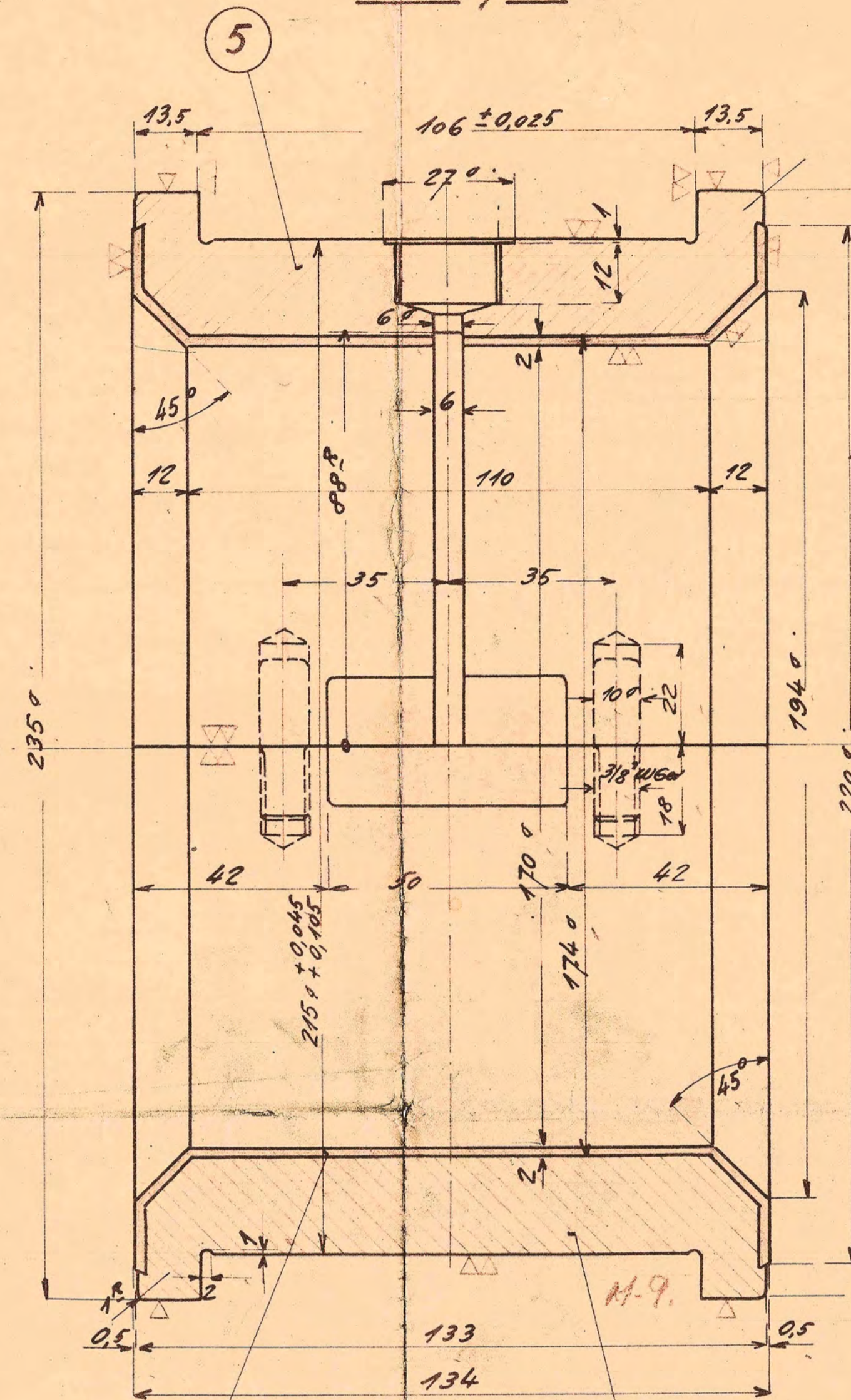
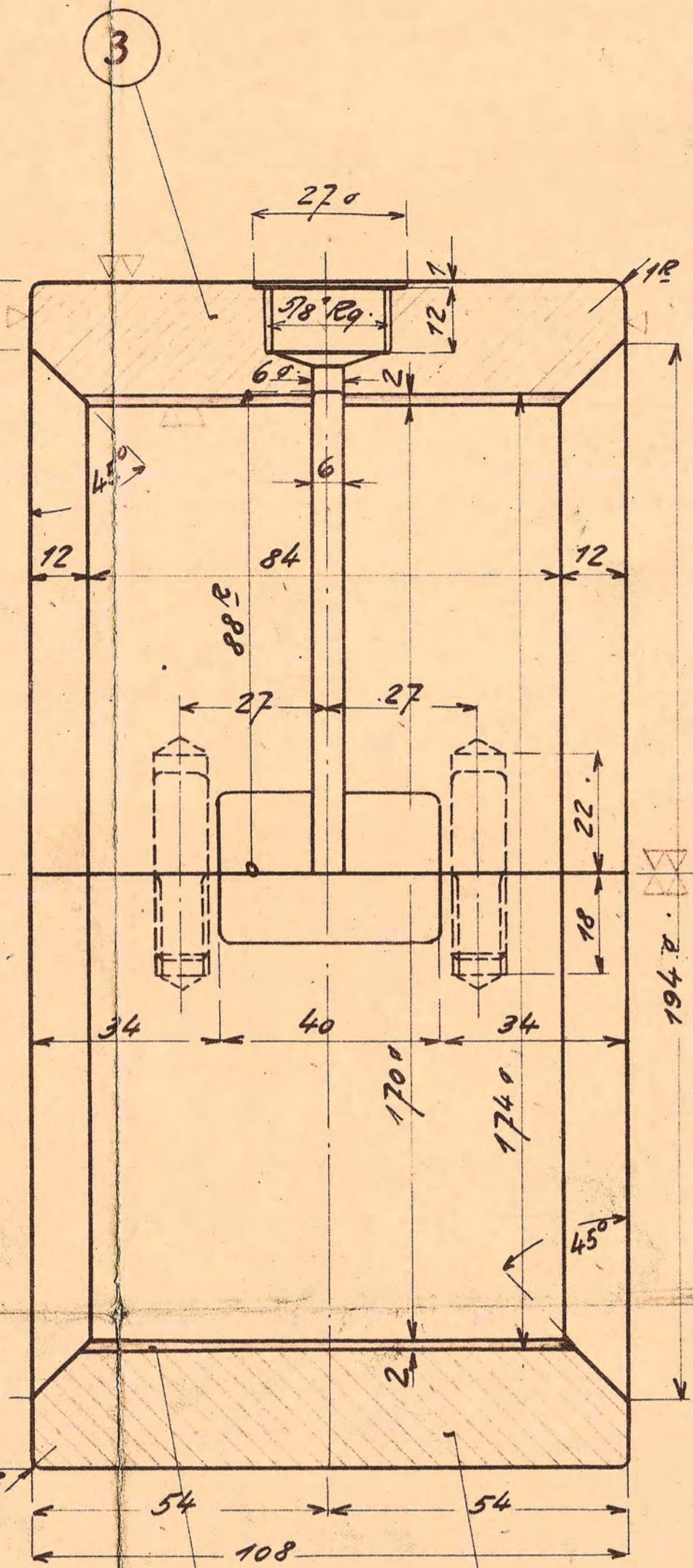
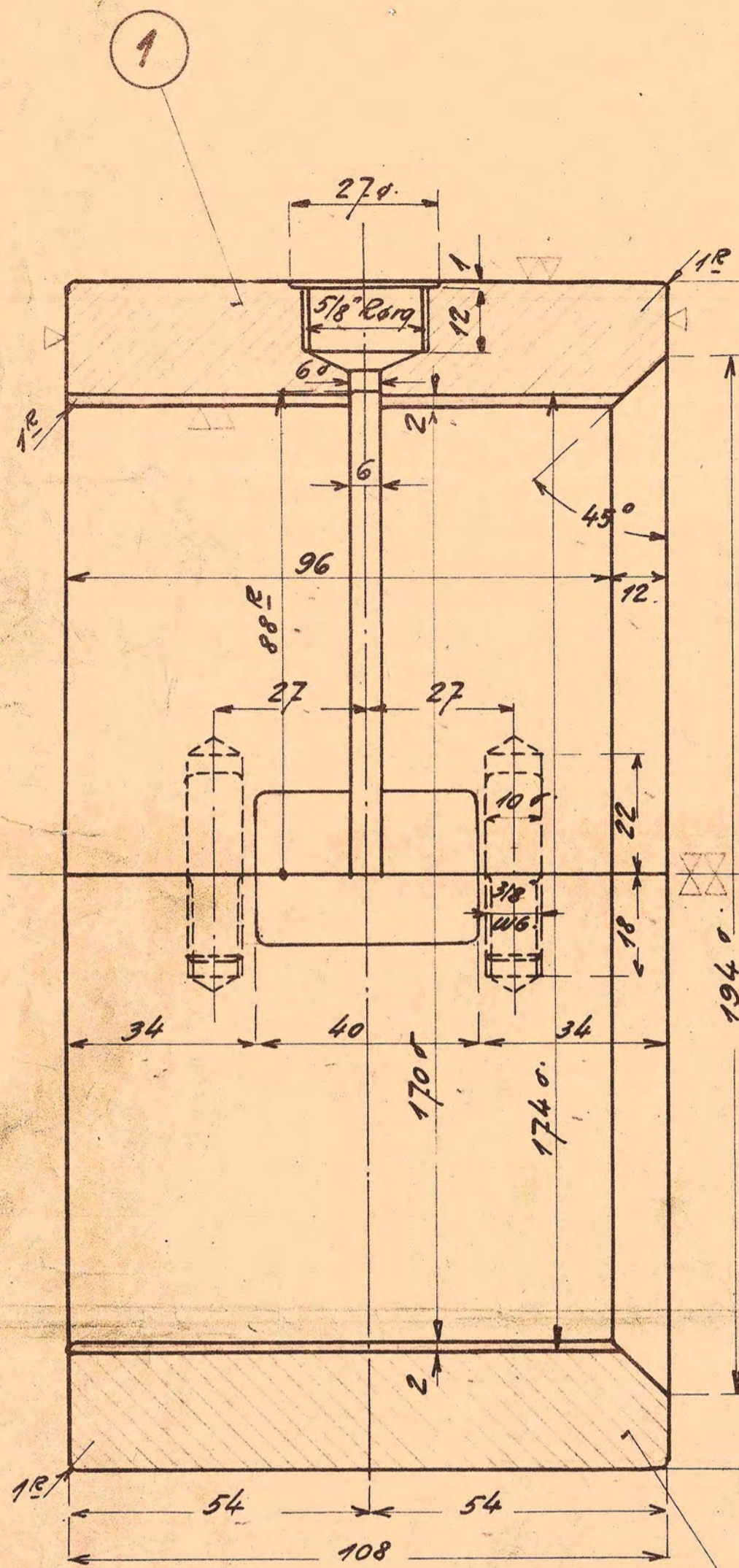


Leje Nr: 1.

Leje Nr: 2-3-5 og 6.

Leje Nr: 4.
Pasleje.

Leje Nr: 7.
ved Generator.



2

9

4

9

6

8

Panderne finbores i Bundramme.
Lejespillerum + 0,12 min.
+ 0,16 max.

Lejedaksler etter Tegn. Nr.: 626C-1-25-a
Hovedlejebolte " " - 1.05.
Smørestuds " " - 13.14.
Styretappe " " - 1.07.

	10	Magasin
Hvitt. Metal.	9	
1 Underpande L = 133mm	8	Staal. gods. 626C $\frac{1.02}{5}$
1 Overpande L = 133	7	" " "
1 Underpande L = 134mm	6	" " "
1 Overpande L = 134mm	5	" 626C $\frac{1.02}{5}$
4 Underpande L = 108mm	4	" 626C $\frac{1.02}{1}$
4 Overpande L = 108	3	" " "
1 Underpande L = 108	2	" " "
1 Overpande L = 108mm	1	Staal. gods. 626C $\frac{1.02}{1}$
S.P.	10.12.47	1:1.

Dieselmotor 6260 CL 3441
Hovedlejepander. 6260CL-1-02