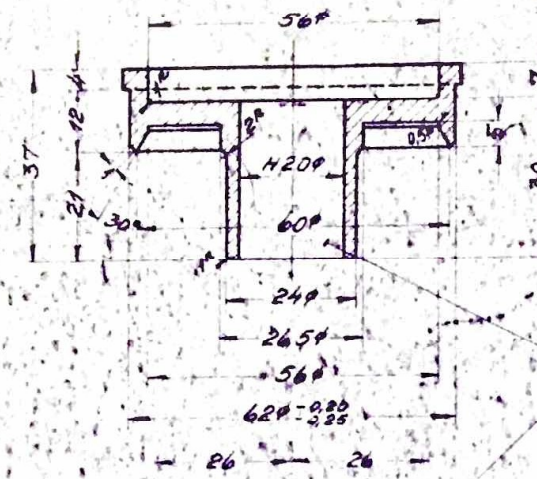


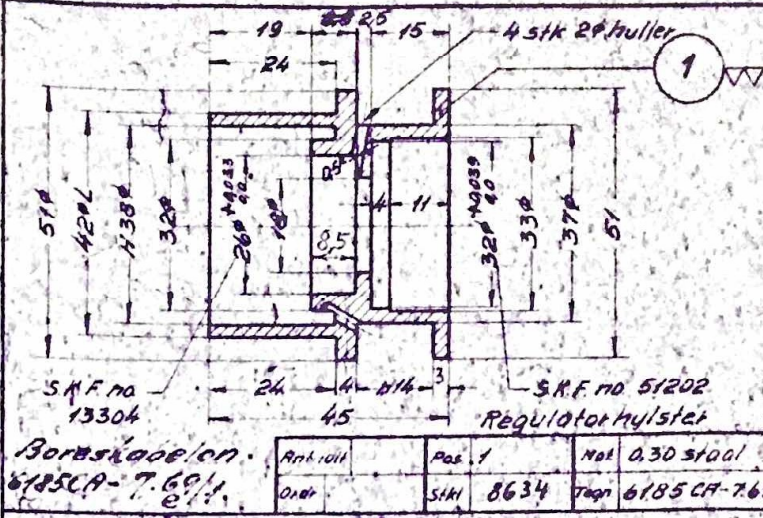
Fjederstyr

Antall	Pos 2	Mot. 0,30 st001
Order	Sktl. 8634	Tegn. 6185CA-769



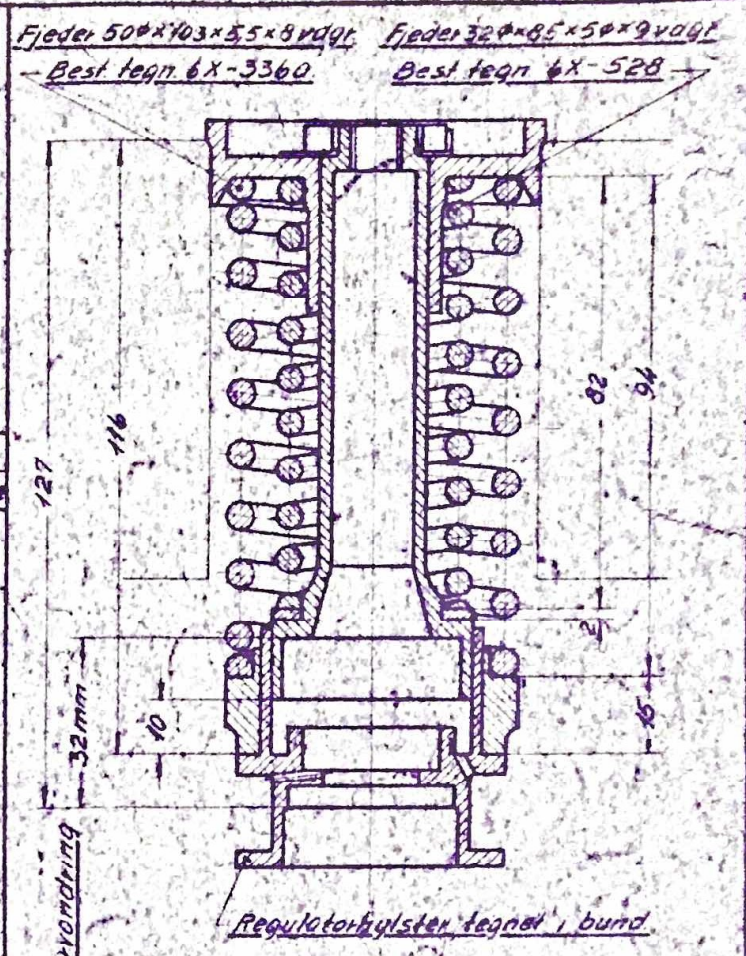
Daksel

Antall	Pos 3	Mot. 0,30 st001
Order	Sktl. 8634	Tegn. 6185CA-769

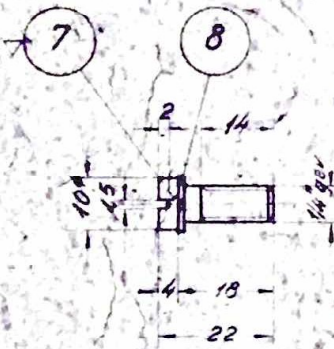


Fjederplate

Antall	Pos 4	Mot. S.K.F. Emnerer.
Order	Sktl. 8634	Tegn. 6185CA-769

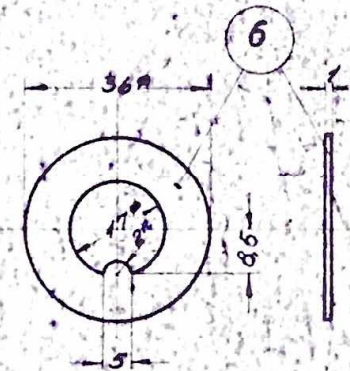


Regulatorhylster tegnet i bund



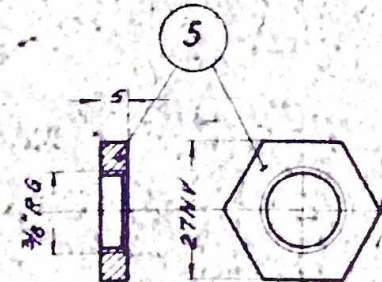
Skru

Antall	Pos 7	Mot. Flussjern
Order	Sktl. 8634	Tegn. 6185CA-769



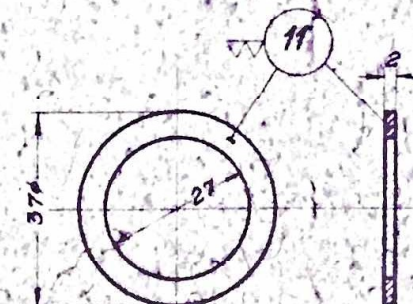
Sikringsblik

Antall	Pos 6	Mot. Flussjern
Order	Sktl. 8634	Tegn. 6185CA-769



Matrik

Antall	Pos 5	Mot. blank st001
Order	Sktl. 8634	Tegn. 6185CA-769



Ring

Antall	Pos 11	Mot. Flussjern
Order	Sktl. 8634	Tegn. 6185CA-769

1	Ring	11	Flussjern	38x7	
1	Fjeder 32x85x5x9 vdgf	10	Flussjern	Best. tegn. 6185CA-769	
1	Fjeder 50x103x5.5x8 vdgf	9	Flussjern	Best. tegn. 6185CA-769	
4	Fjederplade 1/4"	8	St001	110x110	
4	Skru 1/8"x18	7	Flussjern	13x108	
1	Sikringsblik	6	Jernplade	40x40x4mm	
1	Matrik	5	Blik	87seksk. N1x10	
1	Fjederplate	4	S.K.F. Emnerer	50x6x1.25	
1	Daksel	3	St001	85x112	
1	Fjederstyr	2	St001	40x114	
1	Regulatorhylster	1	St001	55x50	

Sktl.	Bestegnelse	Pos.	Mot. i alle detaljer	Mot. i alle detaljer	no. i tegning
Tegn.	Gitt	Rev.	Rev.	Rev.	Rev.
Mott.	Mott.	Mott.	Mott.	Mott.	Mott.
Dato	Dato	Dato	Dato	Dato	Dato
<p>2/50 Bearbejdnings tegn og bl. i pos. 6 3/50 pos. 2-3-4-5 og 6 ændret</p>					<p>Skala 1:1</p>
<p>FRICHS</p>					
<p>Dieselmotor 6185 CA</p>					8634
<p>Regulatorfjedre og fjederstyr.</p>					6185CA-769