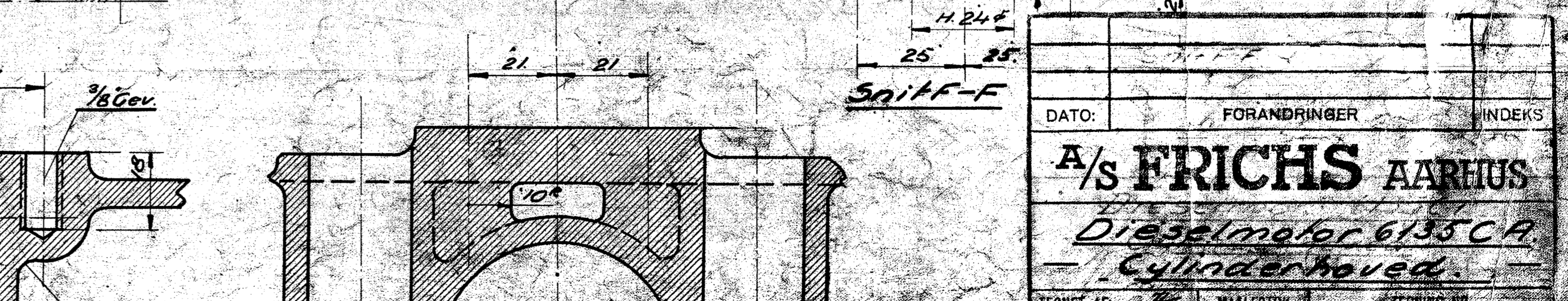
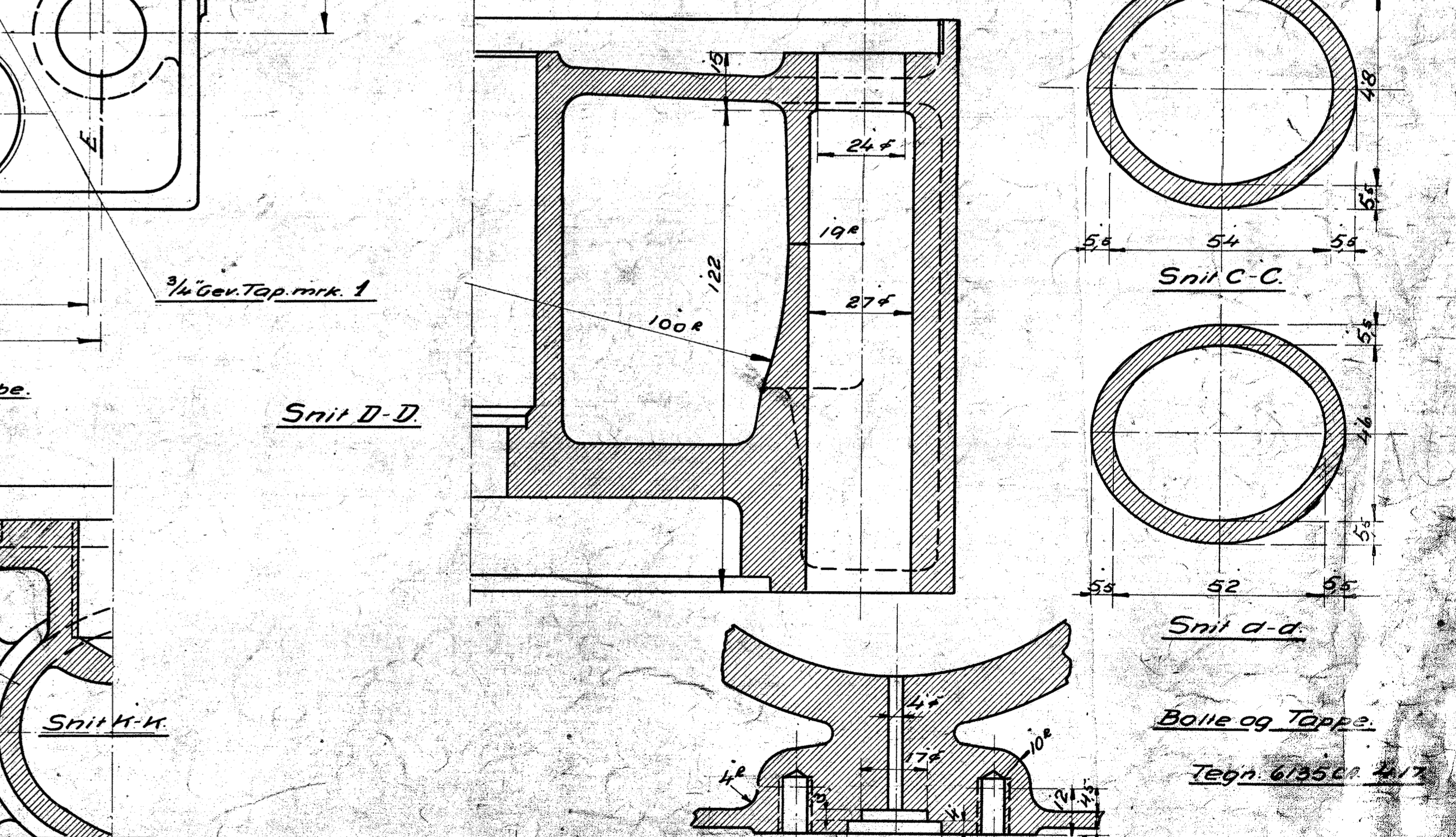
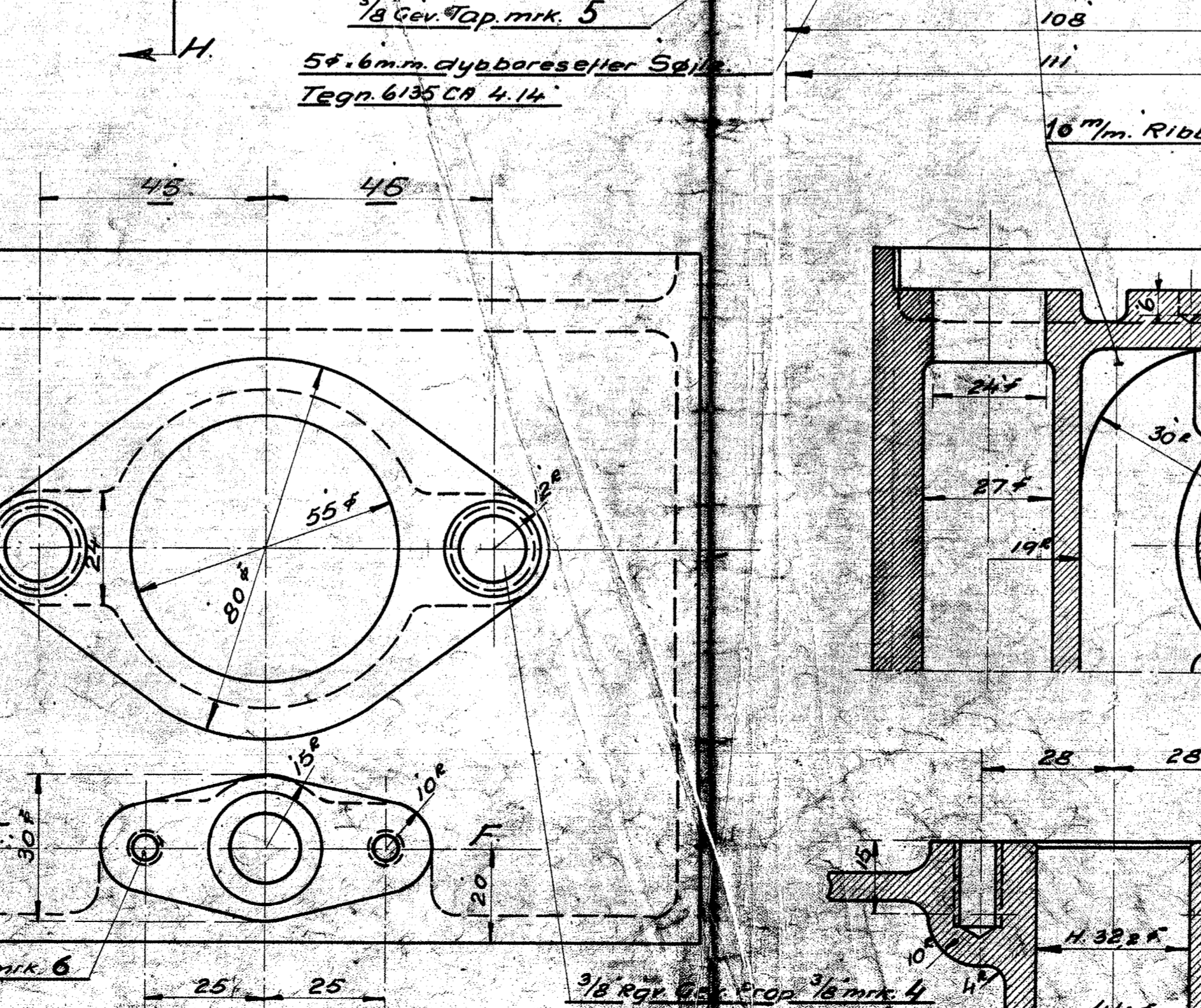
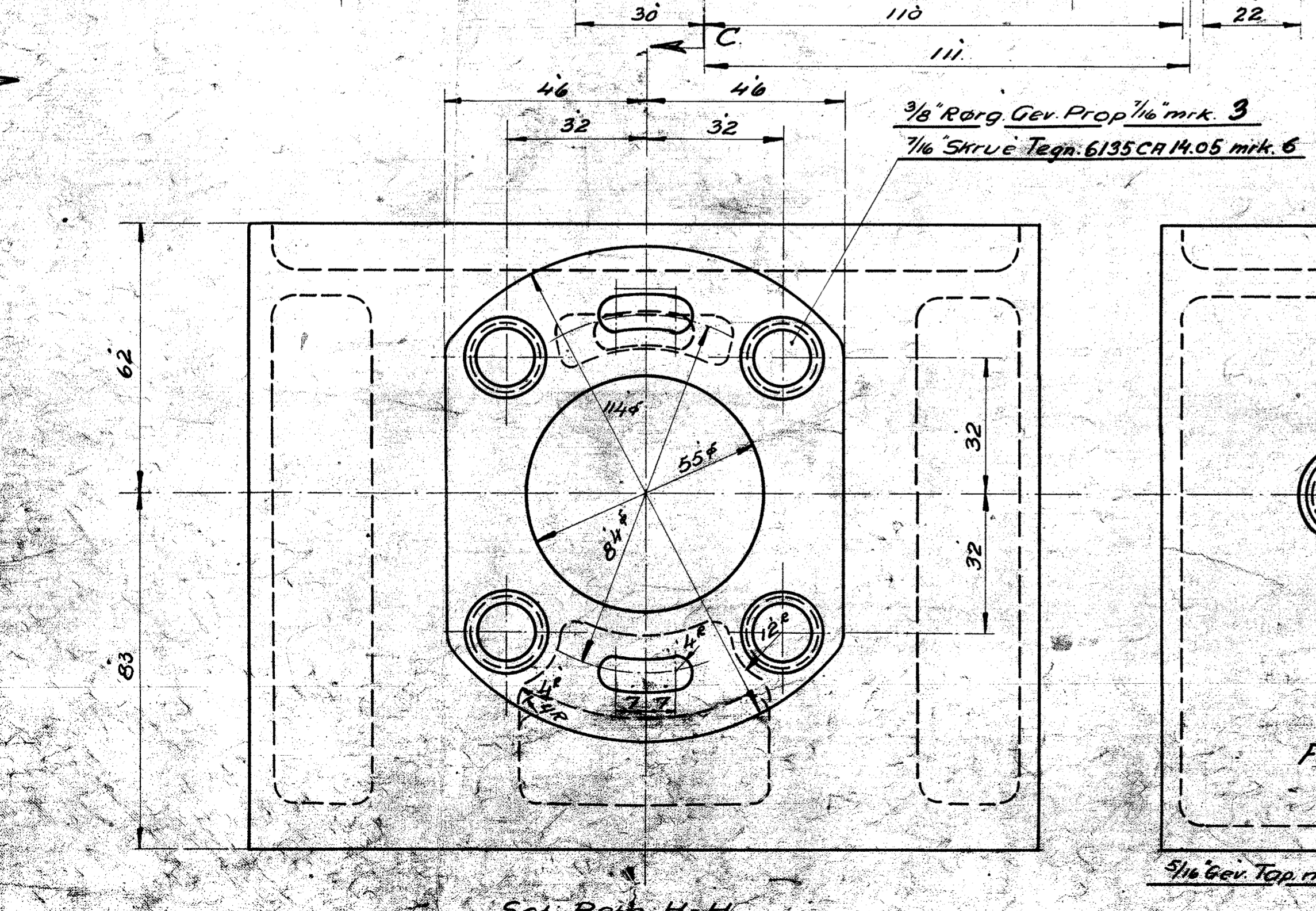
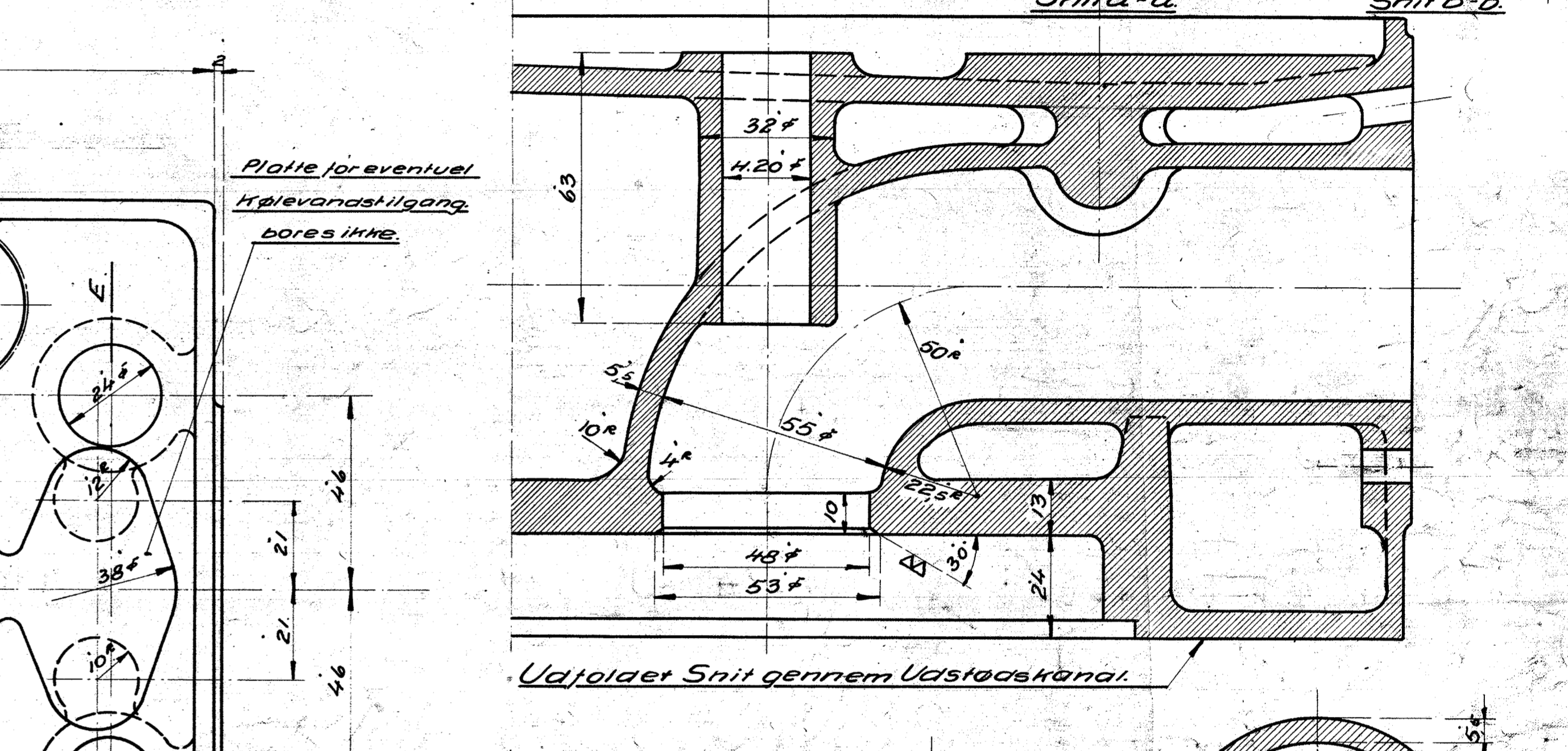
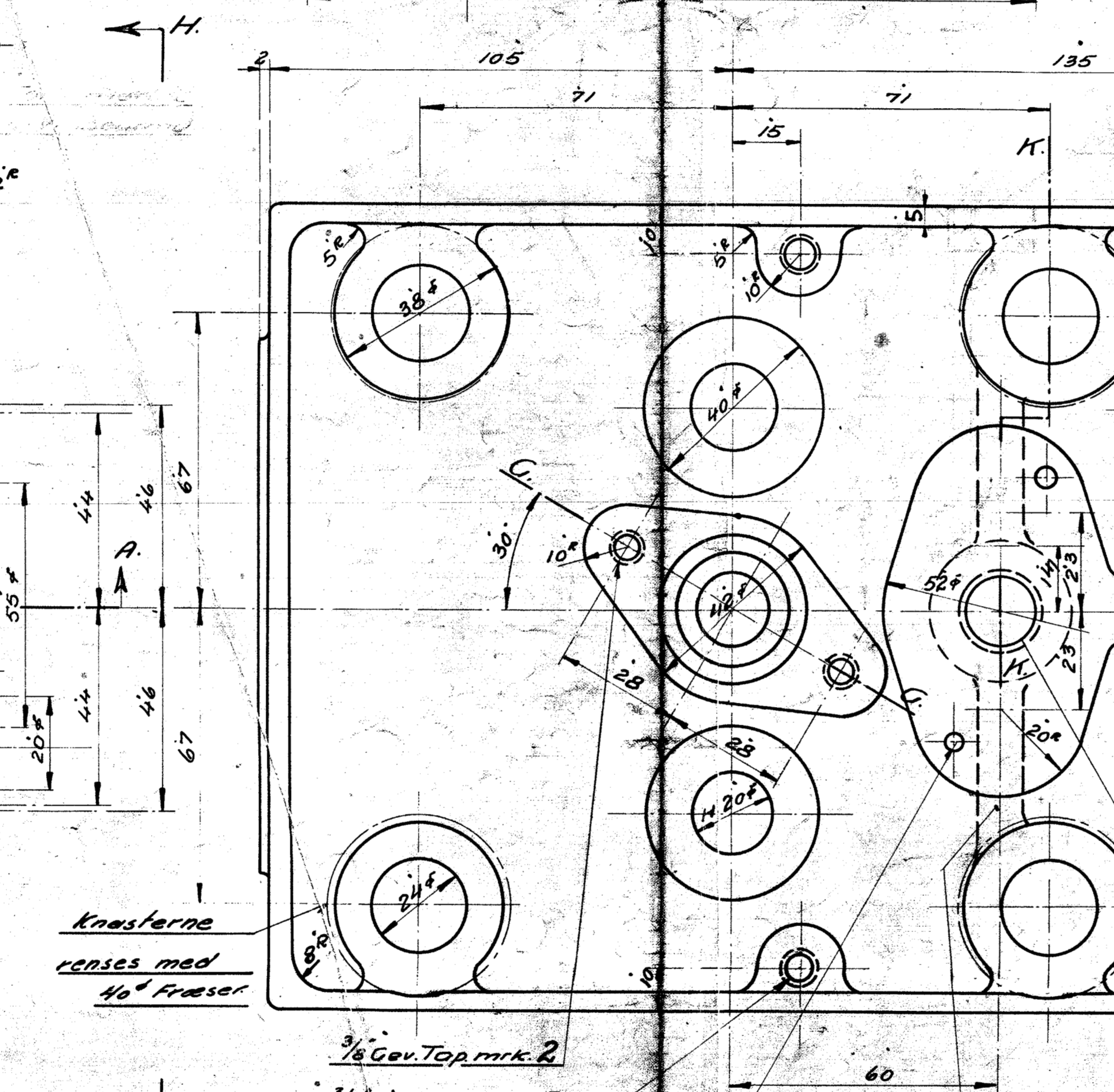
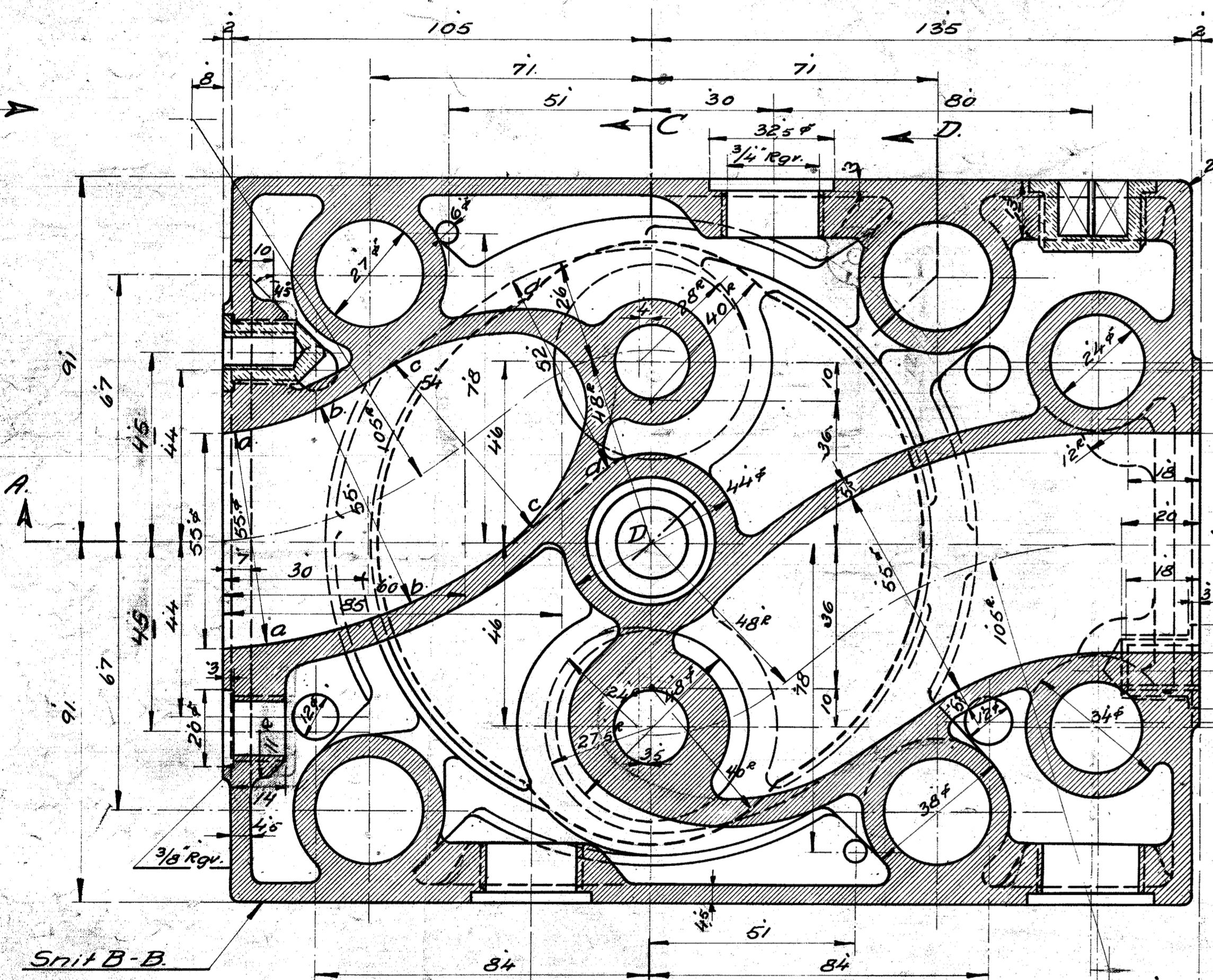
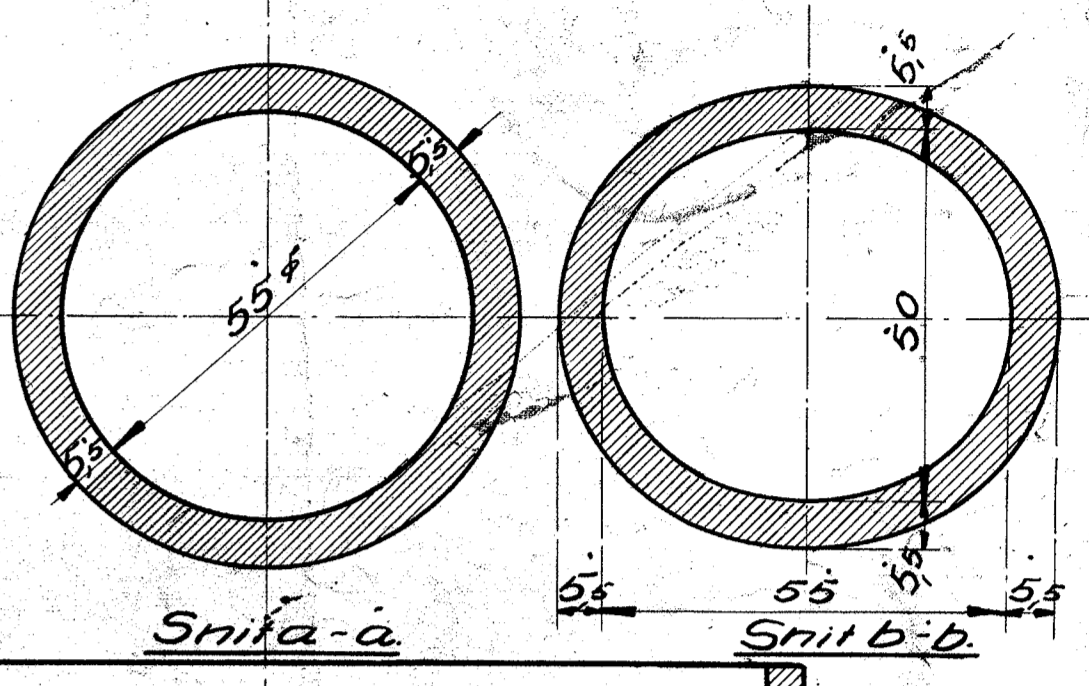
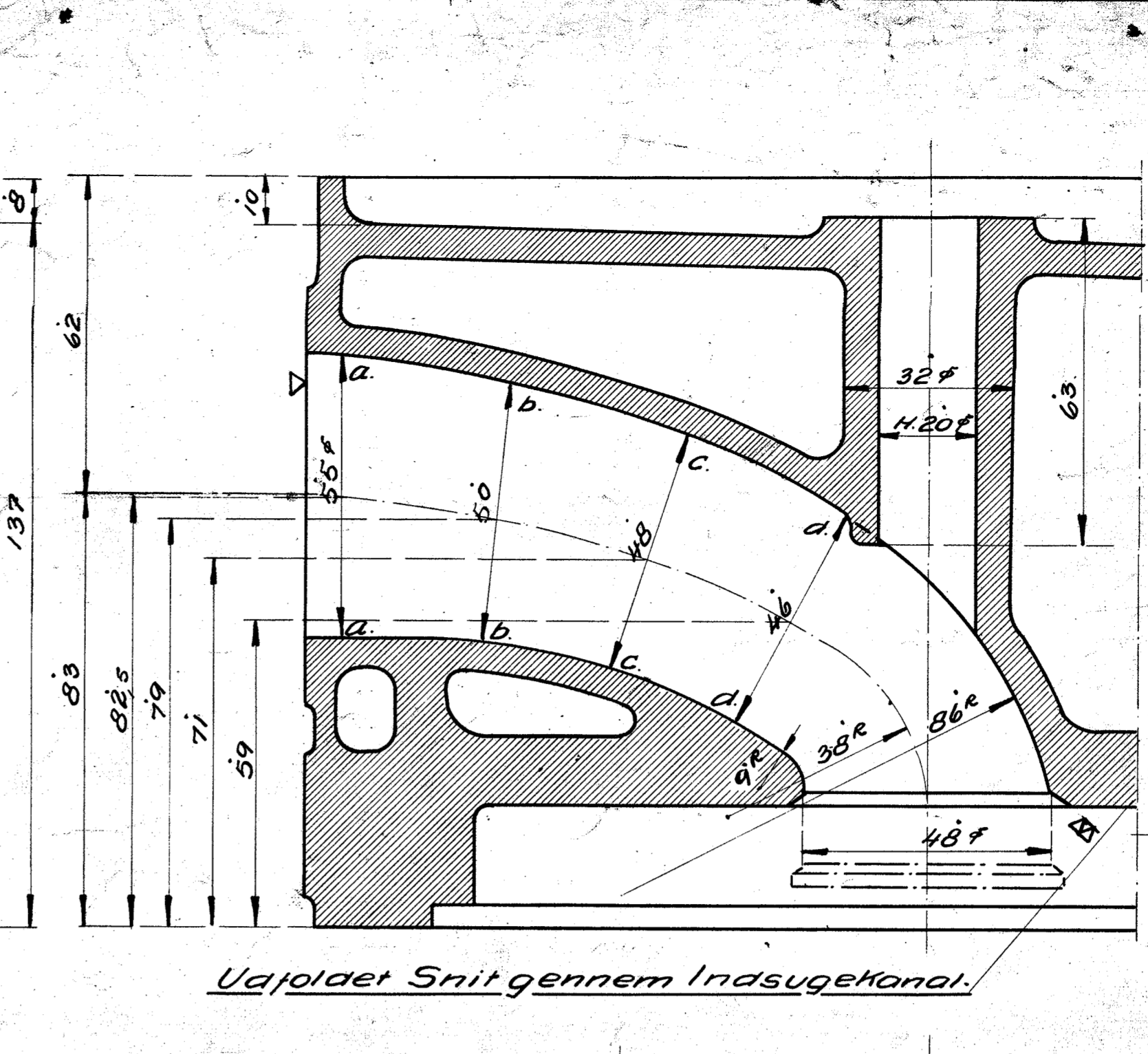
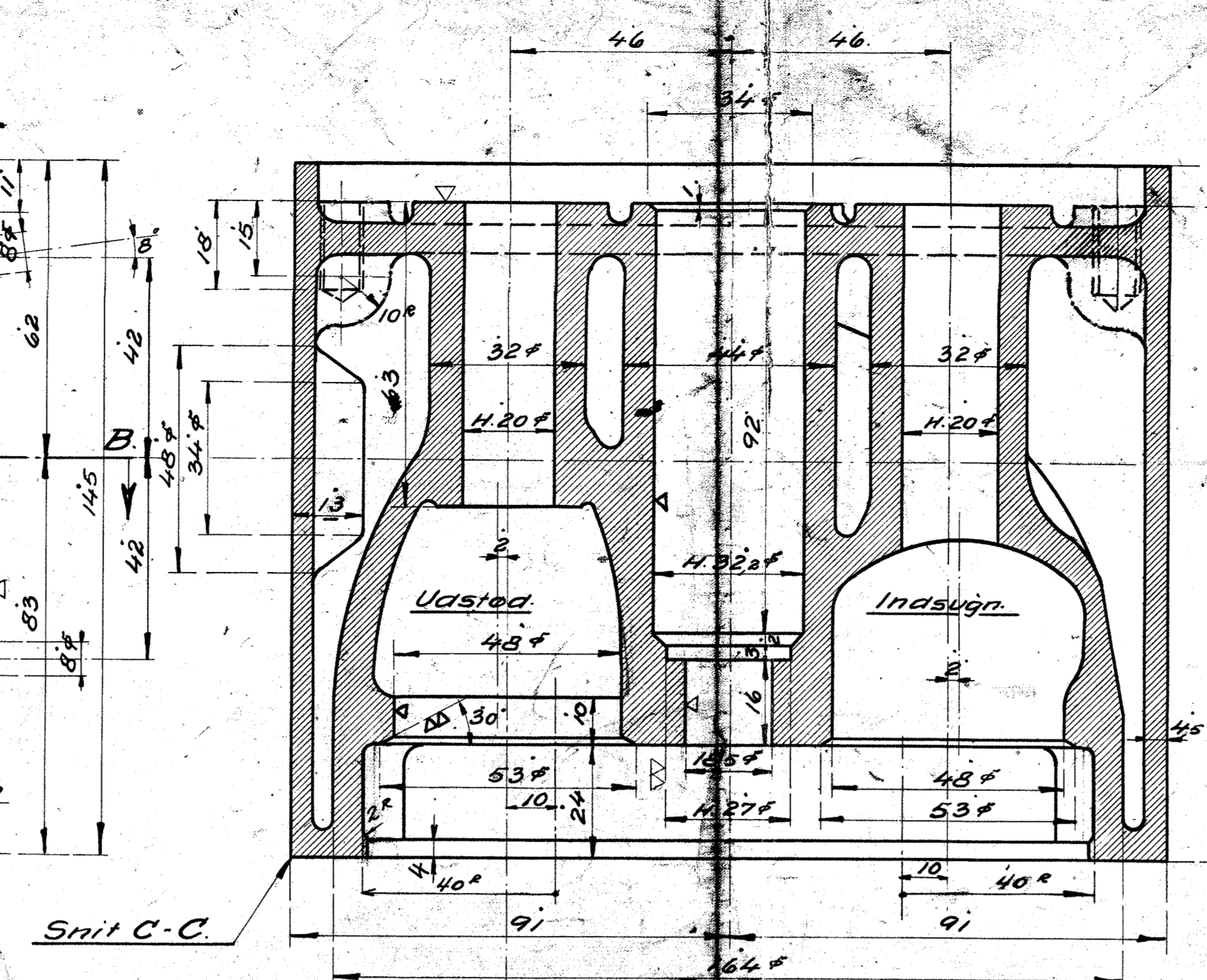
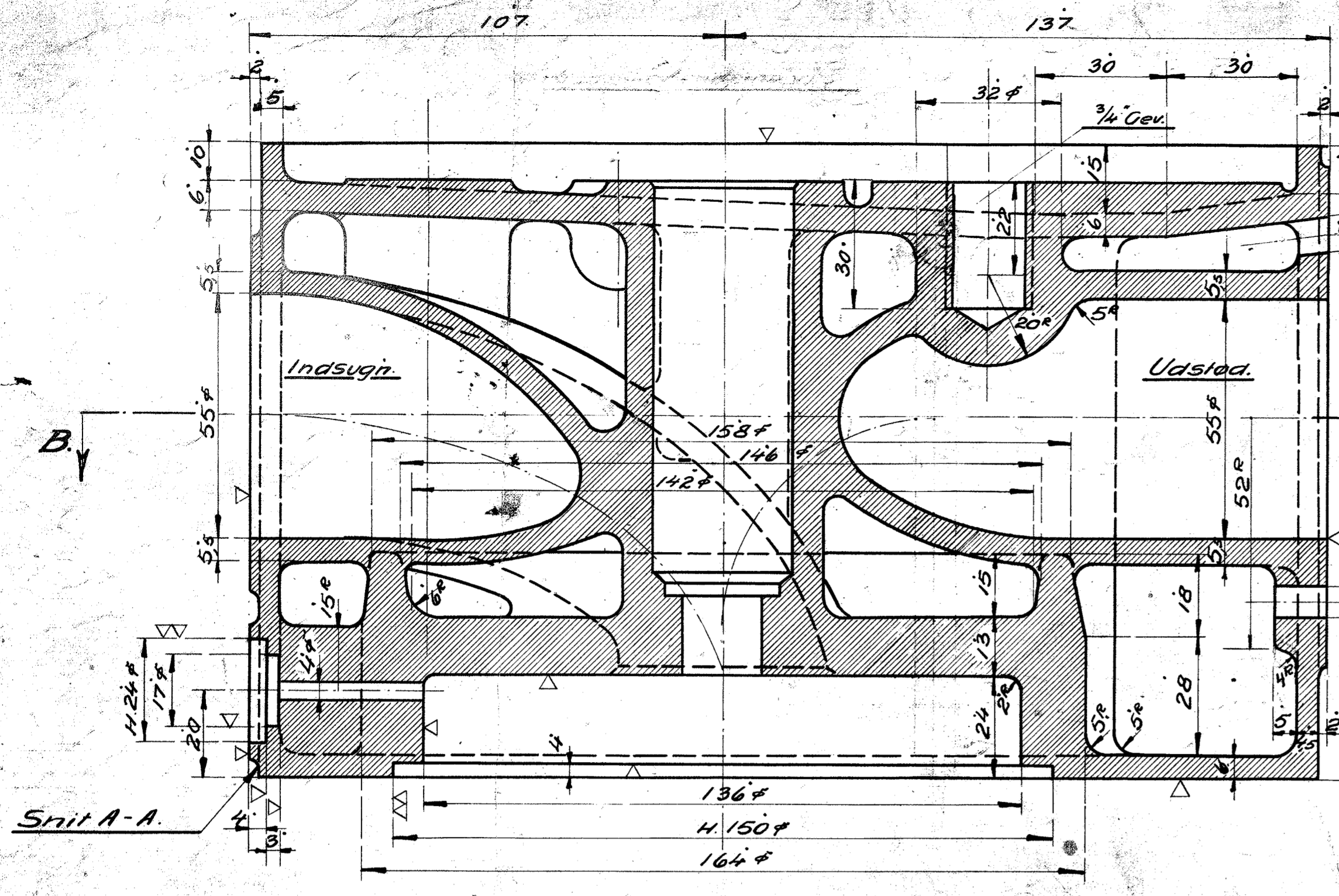


KLEDE NO. 53017 & B	
GEGENST.:	
1	Cylinderhoved
2	Flarepropper



Platte for eventuel
Kølevandstilgæng,
bores ikke.

Knasterne
rensnes med
40° Fræser

3/8" Gev. Top. mtk. 2
3/8" Gev. Top. mtk. 5
54.6mm dybborese eller Sælle
Tegn. 6135 CR 4.14.

3/8" Berg. Gev. Prop. 1/2" mtk. 3
7/16" Skruer Tegn. 6135 CR 14.05 mtk. 6

16"m. Ribbe

3/4" Gev. Top. mtk. 1

Sæll. Rein. H-H

Sæll. Rein. J-J

3/8" Berg. Gev. Prop. 1/2" mtk. 4
7/16" Skruer Tegn. 6135 CR 14.01 mtk. 3

DATO:		FORANDRINGEN	INDEKS
A/S FRICHS AARHUS			
Dieselmotor 6135 CR			
Cylinderhoved			
TEGNET AF:	MALESTOK	TEGNET UD	
REVIDERET AF:		TEGNET UD	
DATO:	12/10/1914	1.1. 6135 CR 14.05	
INDEKS	TEGNET UD		2/6