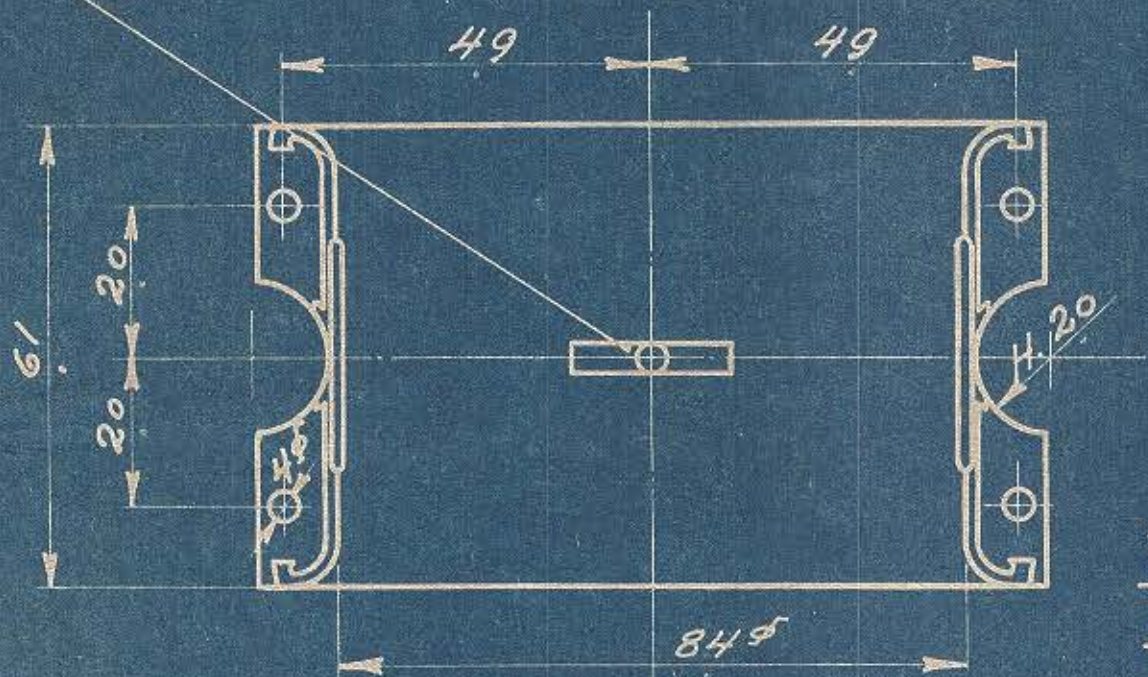
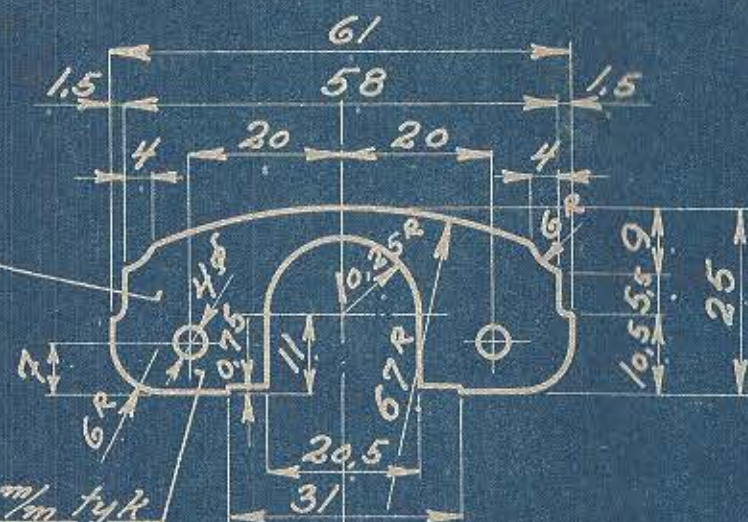


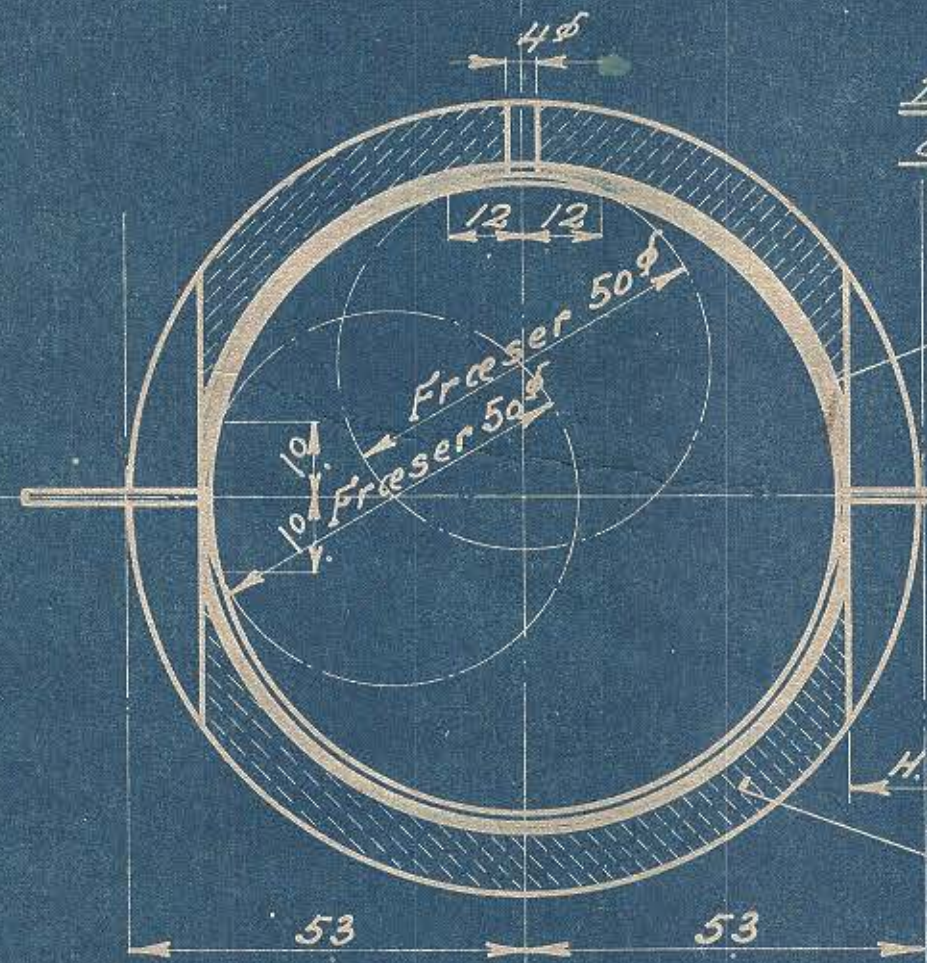
4 mm bred Smørenot med afrundede Kanter.



2



Mellemlæg 15 mm tyk tilpasses om Akslen med 0,1 mm Spillerum.



Disse Kanter afrundes

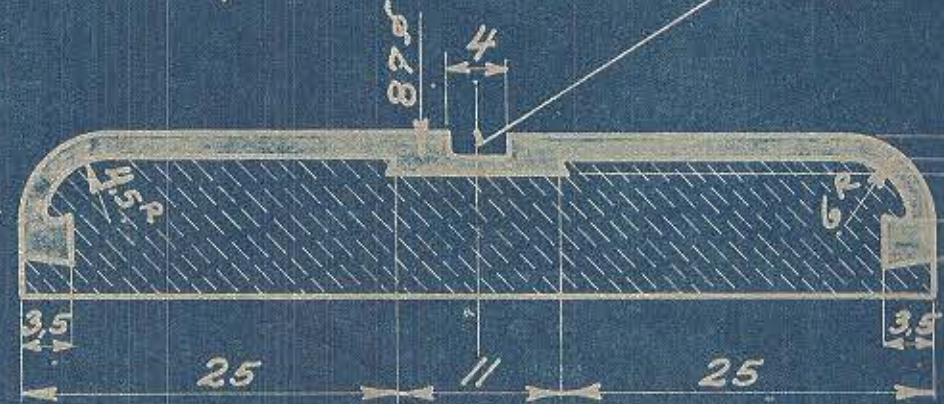
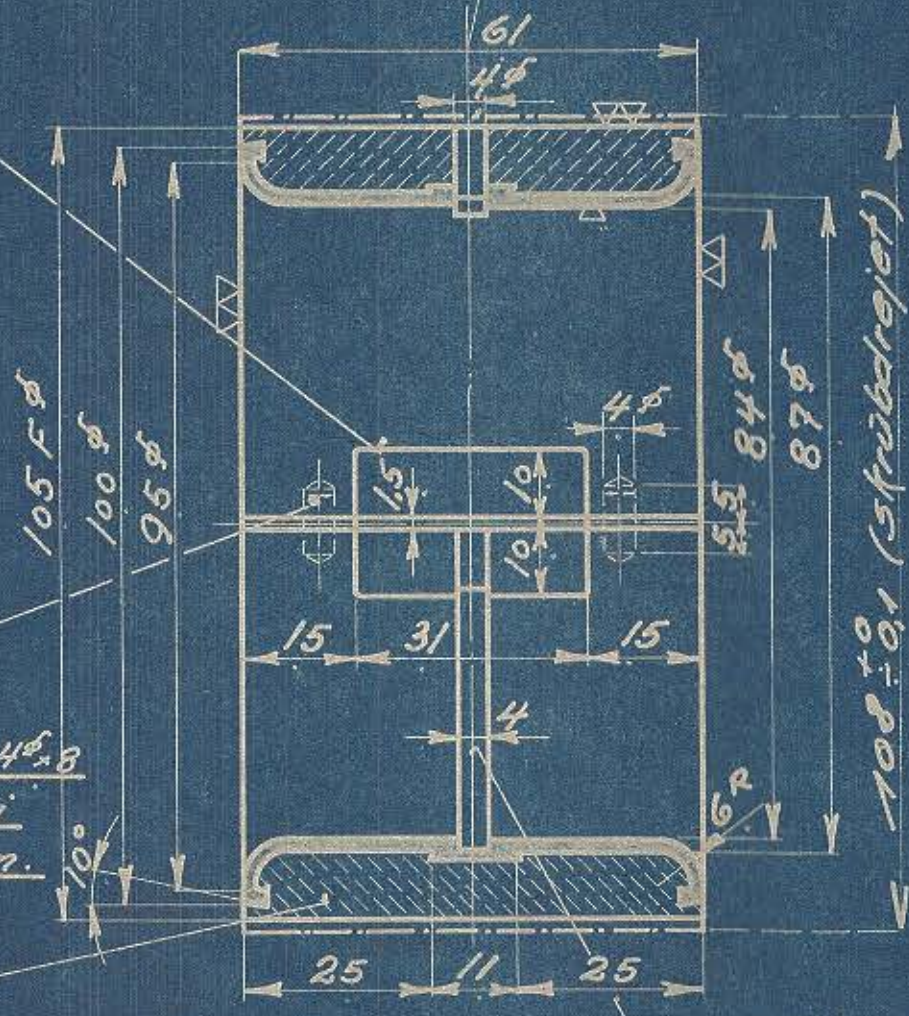
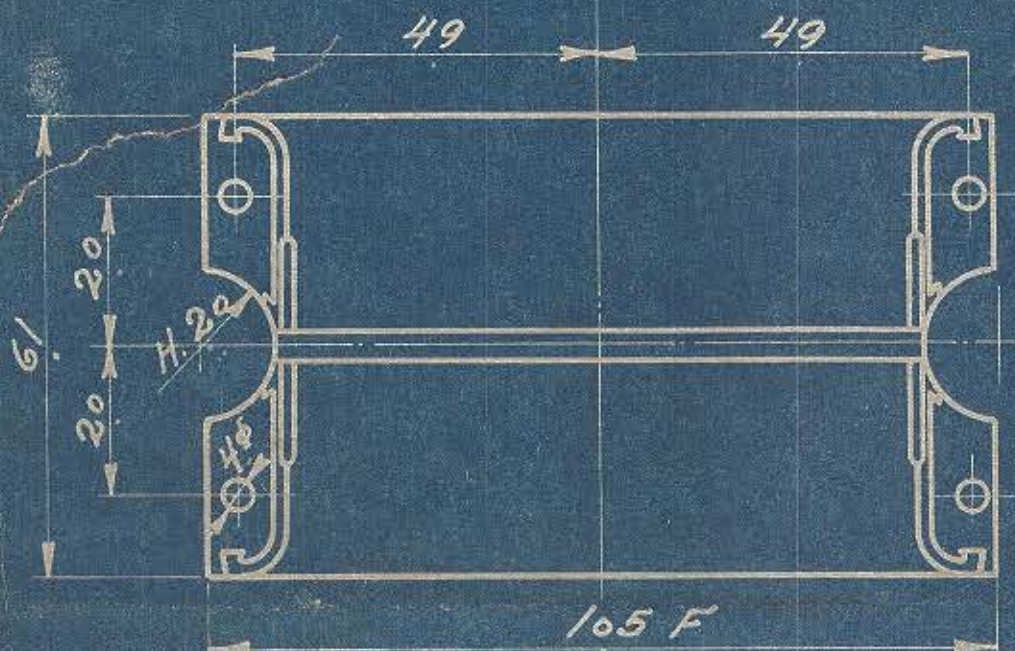
4

3

Styrestift 4φ x 8 H. 20 drives fast i Underpanden.

1

Smørenot 4 mm bred 15 mm dyb med afrundede Kanter



Målestok 2:1

55859

		A & A e	
1	1	Todelt Pande	Cog wheel / Købes rag.
2	2	Mellemlæg	Mes-ting / 75x65x15
3	4	Styrestifter	Klaver traad / 4φ x 40
4		Hvidt Metal	Weyls / Magasin.

WILHELM BARRIUS  
 Dieselmotor 6135CA  
 Krømtappander.  
 A.E.A.  
 Nr. 1: 1 6135CA.3.0F  
 31.10.33 2: 1  
 & & e