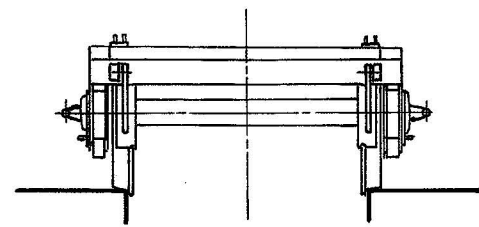
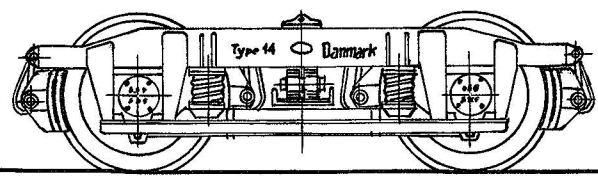


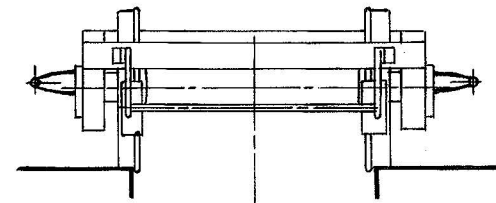
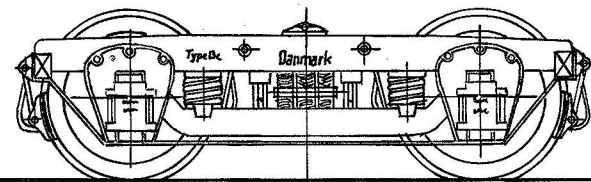
2 m Staaltruck



Til Ltr. DA

Bygget 1937-40

2,1 m Trætruck



Til Ltr. Nr.

Af 91-94

AR 110

AT, ATM

Az 371

CM 2120-2130, 2191

Co 2501-2527

CP 2801-2930, CPM

CSS, CSM, CS

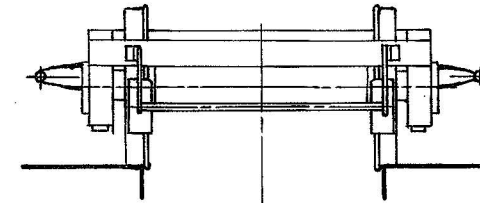
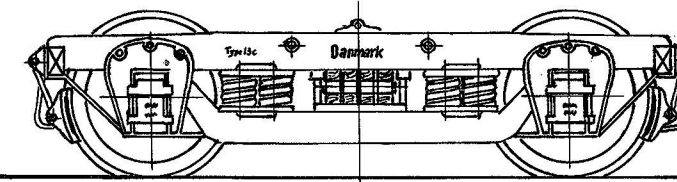
CT, CTK, CTM, CTS, CTE

CQM

DH

Bygget 1894-1914

2,5 m Trætruck



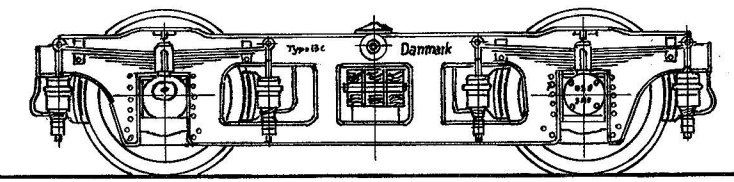
Til alle de ikke nævnte Person- Post- og Rejse-
godsvogne med Trucker.

Ltr. Co 2542-2547 har kun 2 Skruefjedre i hver Side

Ltr. CR og CRM har SJSF- Rullelejer

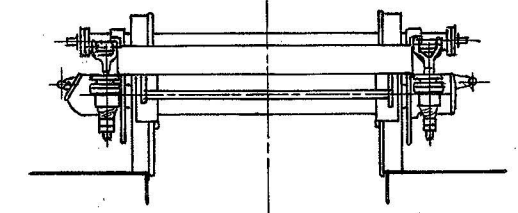
Bygget 1904-34

2,5 m Staaltruck (Berlinertruck)



Glideleje

Rulleleje



Til Ltr. Af 95-99

AR 101-105

ARM 151-154

ASM

CM 2051-2076, 2203-2204

CMK 2492-2499

Co 2701-2761 ^{MB}

CP 2931-2963

Dg

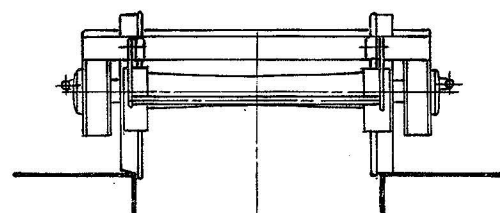
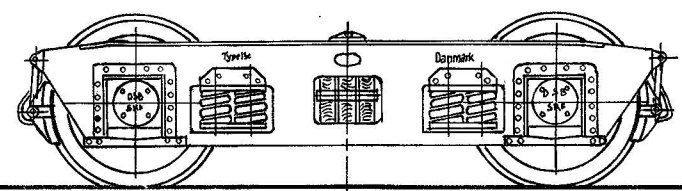
Ec 6216-6233

Ed

Bygget 1903-26

^{MB} Co 2741-2744 har Skrue-
fjedre i St. f. Evolutfjedre

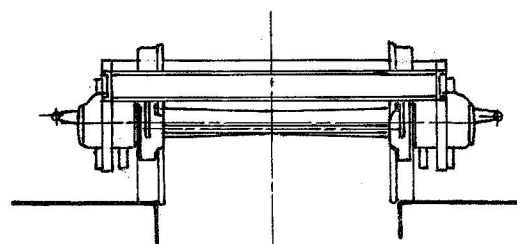
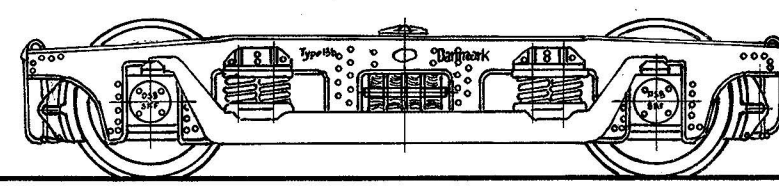
2,5 m S-Togs Staaltruck



Til Ltr. DB, FM, FE og FS

Bygget 1933-36

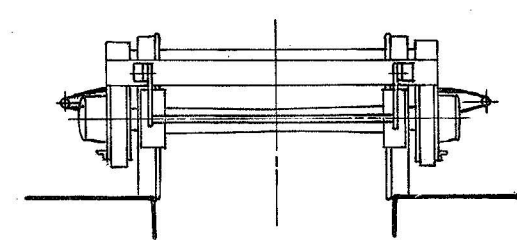
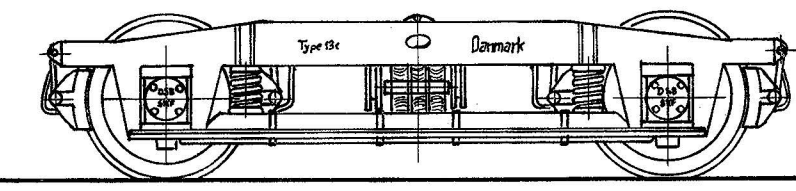
3 m nittet Staaltruck



Til Ltr. Au og Ca

Bygget 1932

3 m srejst Staaltruck



Til Ltr. S1¹⁾, Ac, AcM, Av²⁾, AvM²⁾, Ax og Cb

¹⁾ S1 har 4 Bremsklodser paa hvert Hjul.

²⁾ Av og AvM har kun 2 Tværfjedre i hver Side. Bygget 1937-40

1:45

København
16-11-1941

Trucker til Person-Post- og Rejsegodsvogne

Tegner: *William Bay*

6

De danske Statsbaner

0