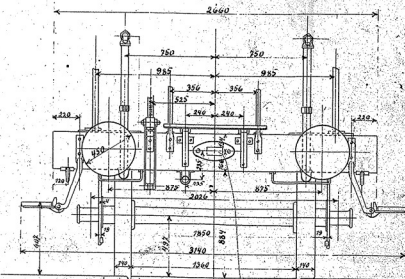
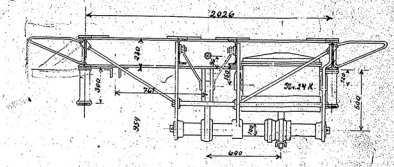
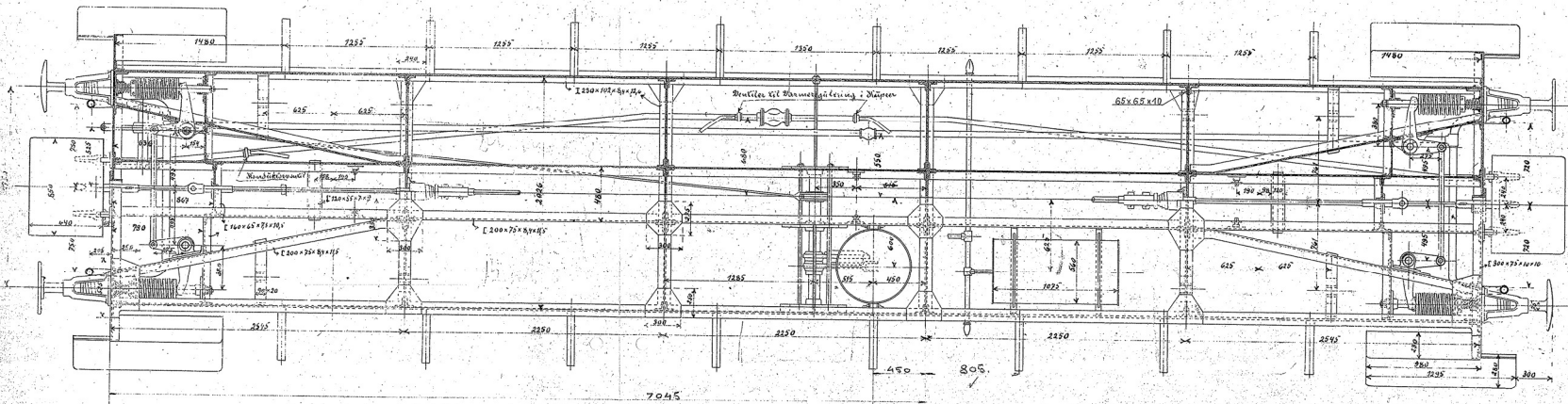


Bremseregulator se Teg. NV242



72 mm lang
880
240
715
165

T.B
Cyl 12 1/2 300 mm
Ar. Kraft = $\frac{525.4 \times 1800}{17500} = 2827.2$
Bremsarm = 341
Bremsforhold = $\frac{285}{341} = 4.04$
 $4.92 \times 2827.2 = 13908.12$
 $\frac{13908.12}{17500} = 1.80\%$

V.B
Cyl 10 1/2 250 mm
Bremskraft = $\frac{13464 \times 100}{17500} = 78\%$
Bremsarm = 480
Bremsforhold = $\frac{480}{604} = 0.654$
 $6.84 \times 2043 = 13974.12$
 $\frac{13974.12}{17500} = 1.80\%$

Wandravn
iii

Bc 10601-10620 = Cy 4601-4620
Bc 419-420 = Cy 4651-4652

Scandias Vandravn Nr. Bc. 10601-10620
Dr. 1323.
BP 419-420