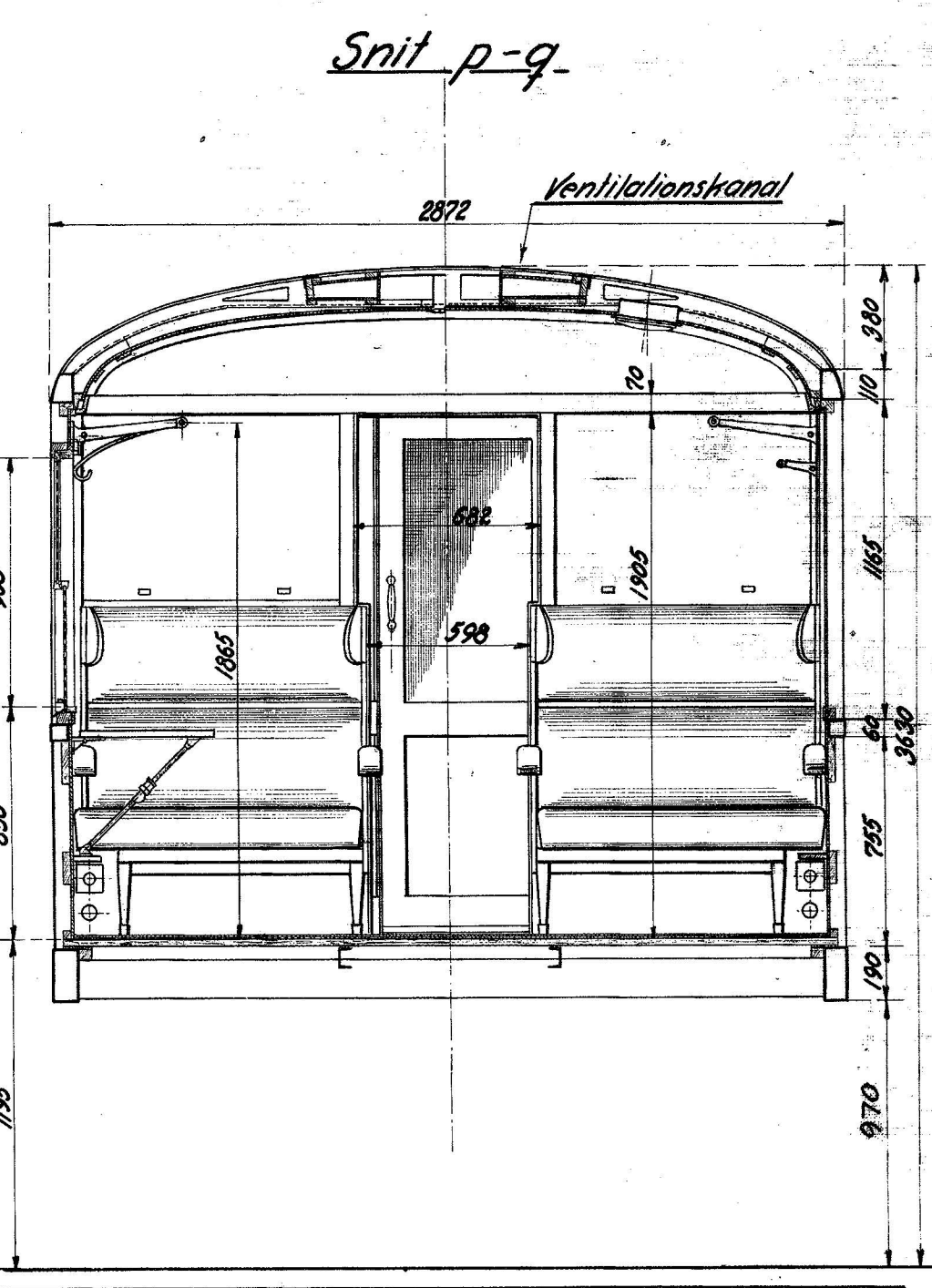
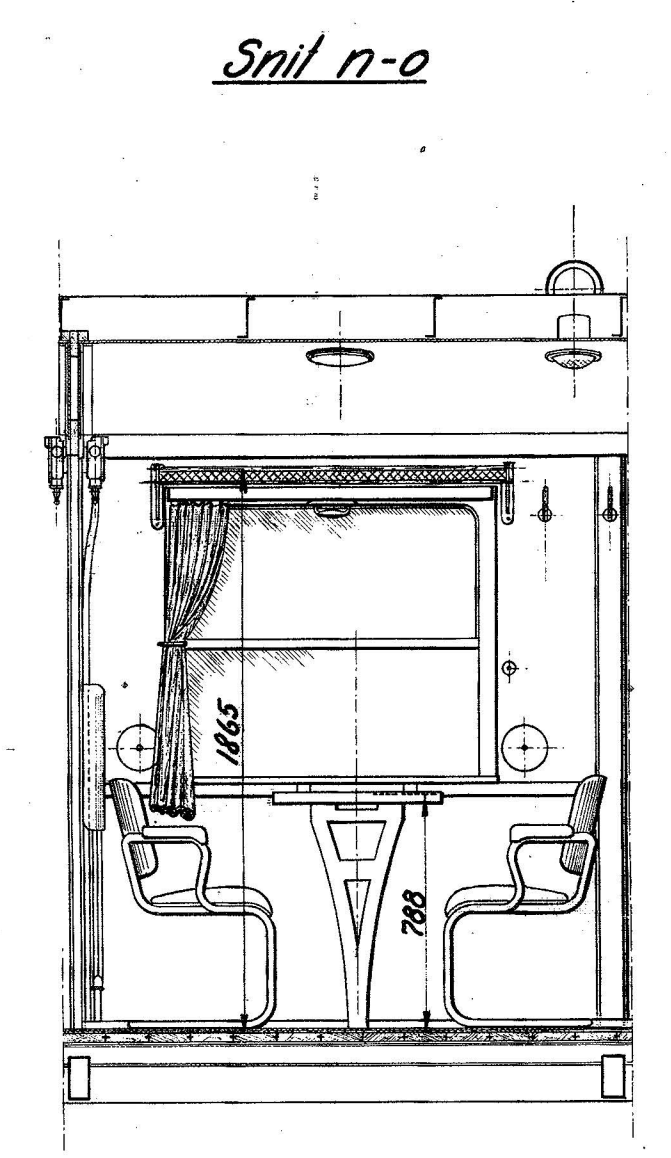
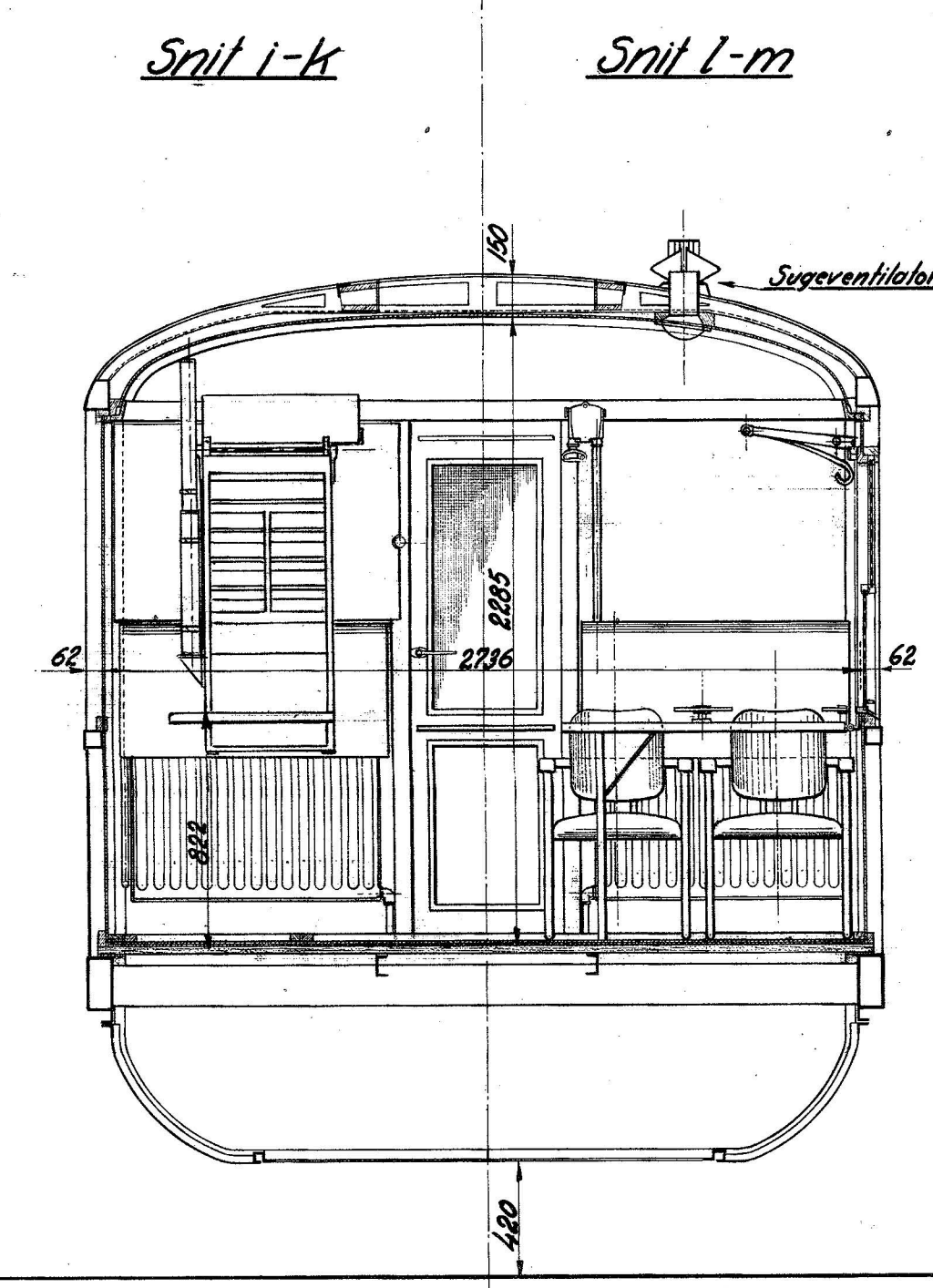
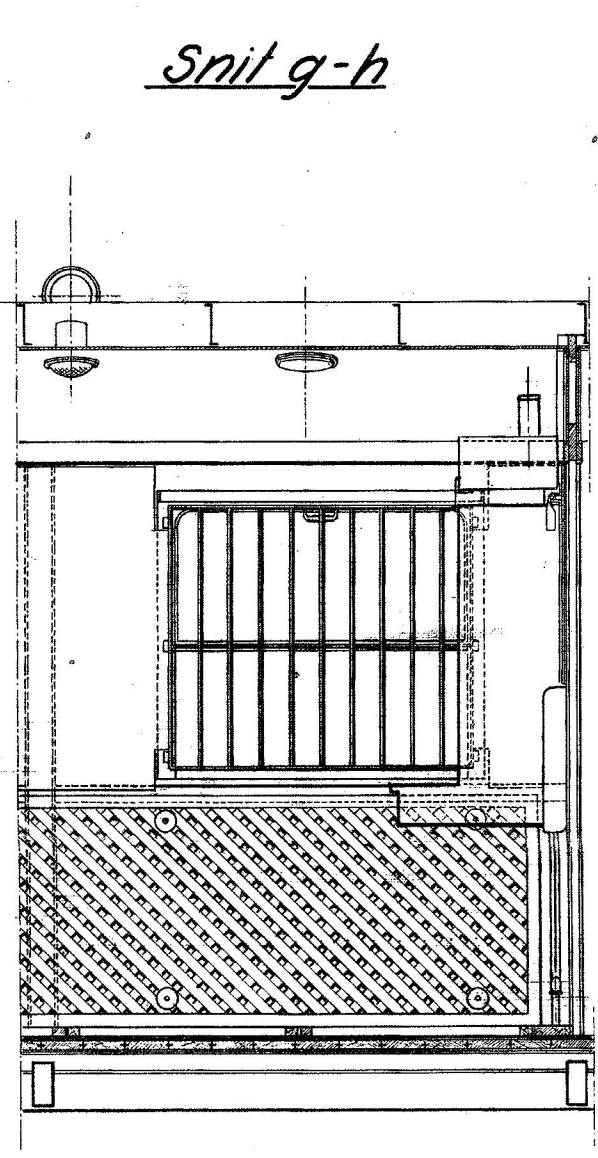
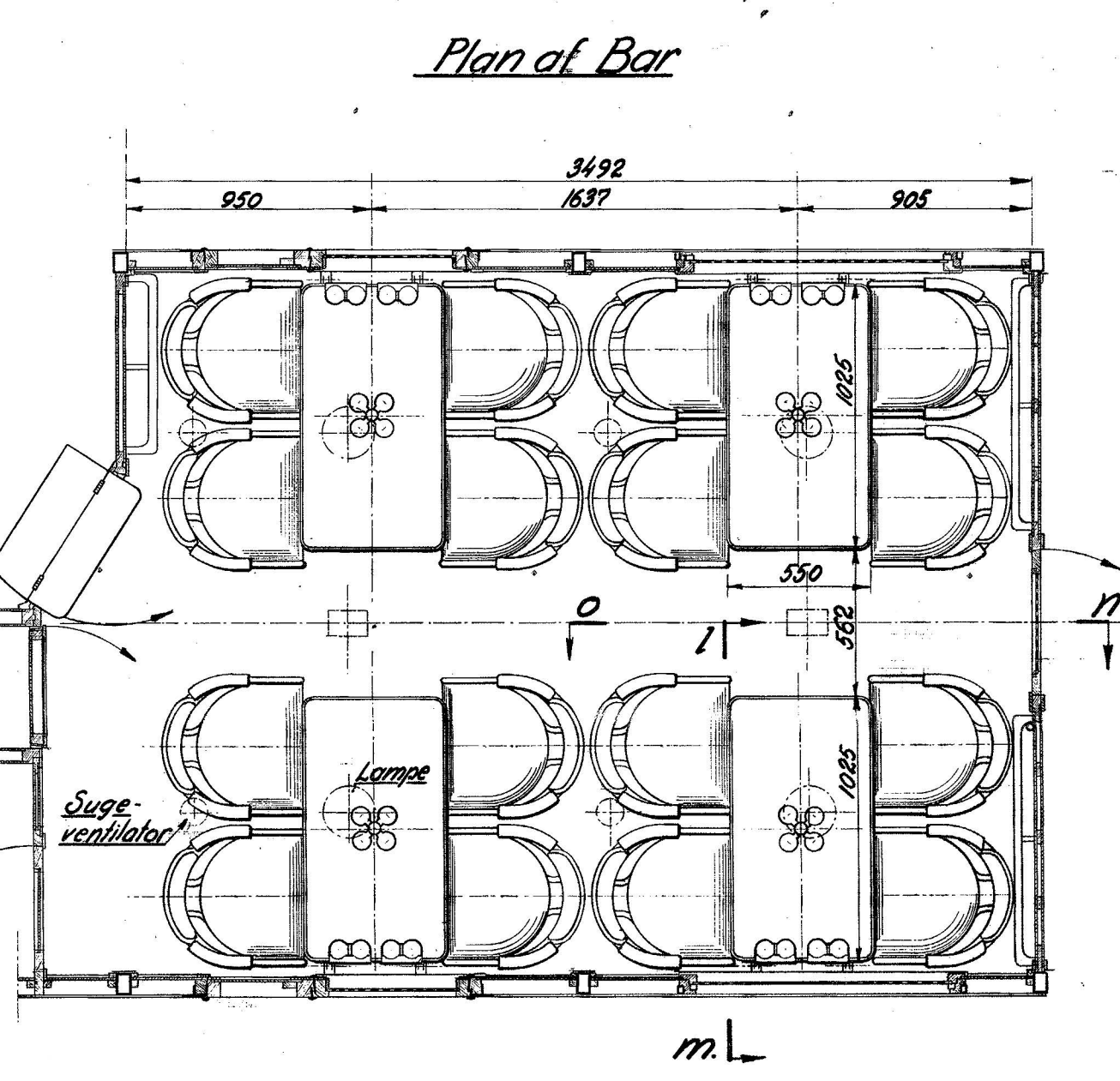
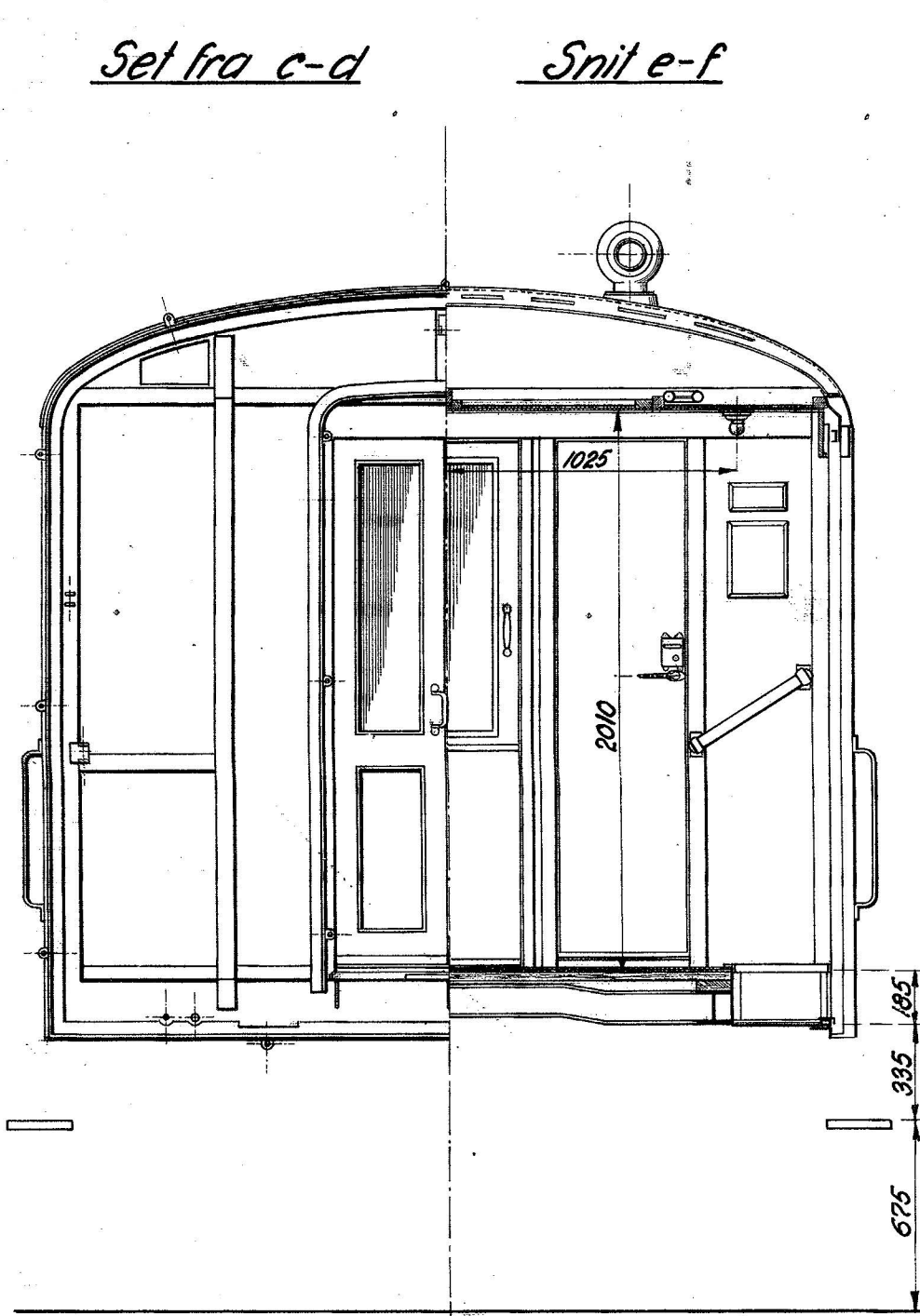
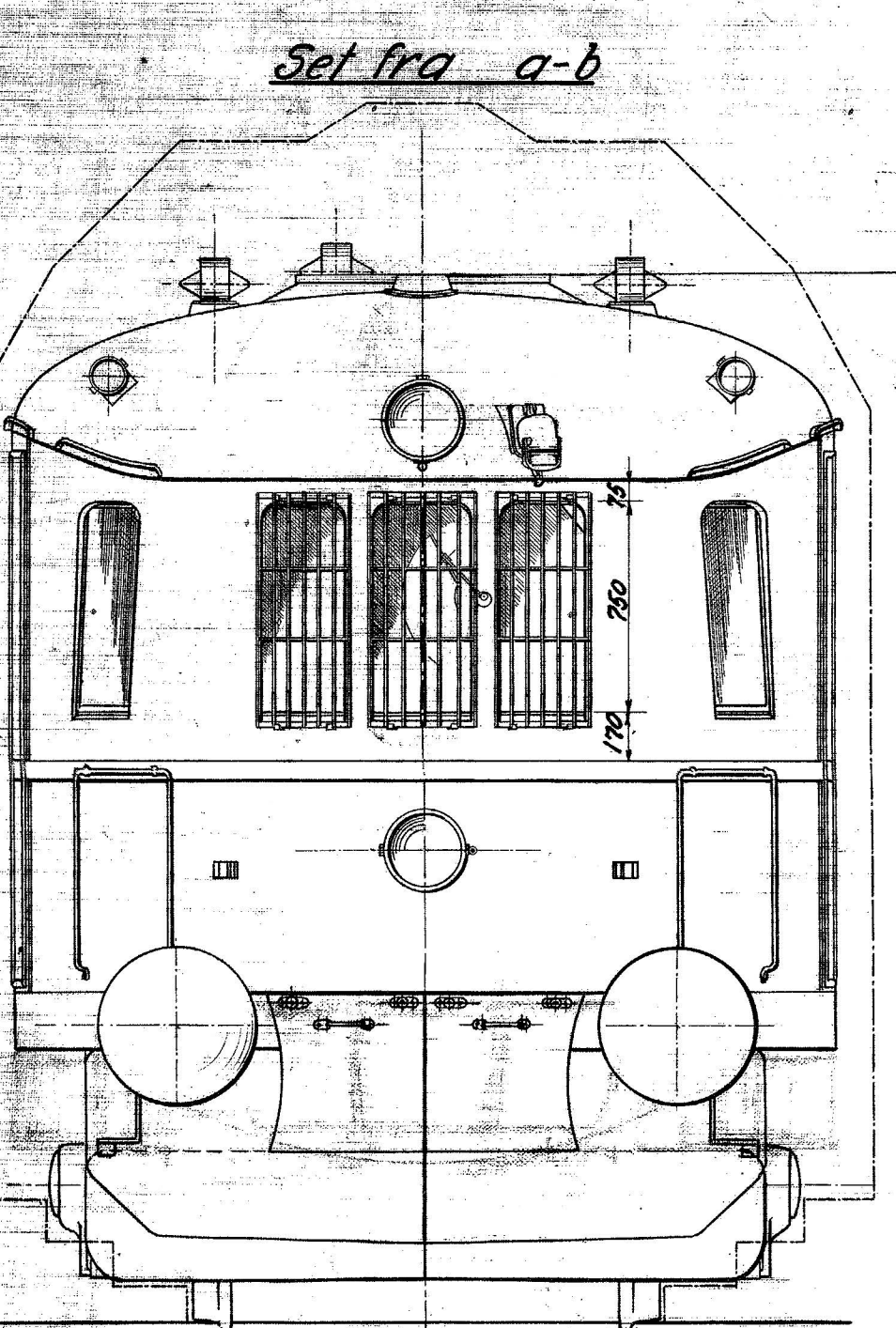
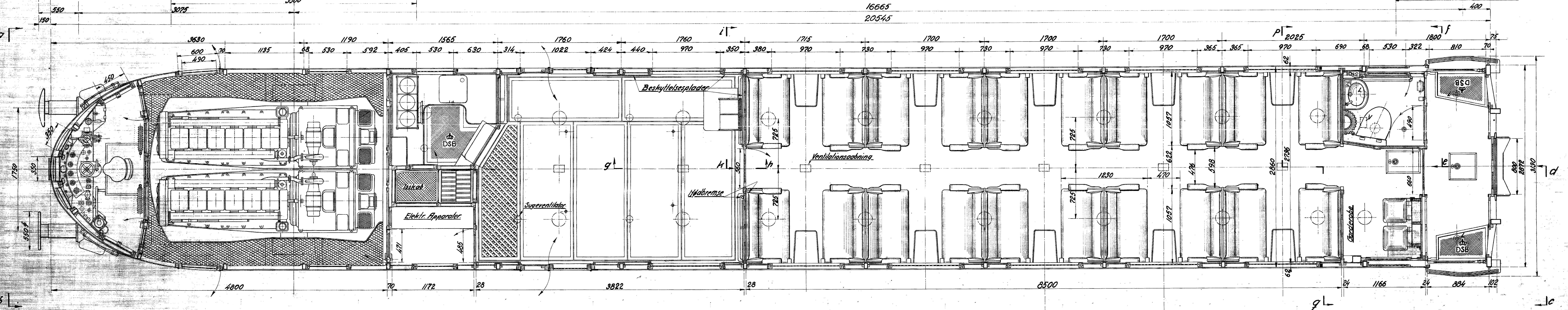
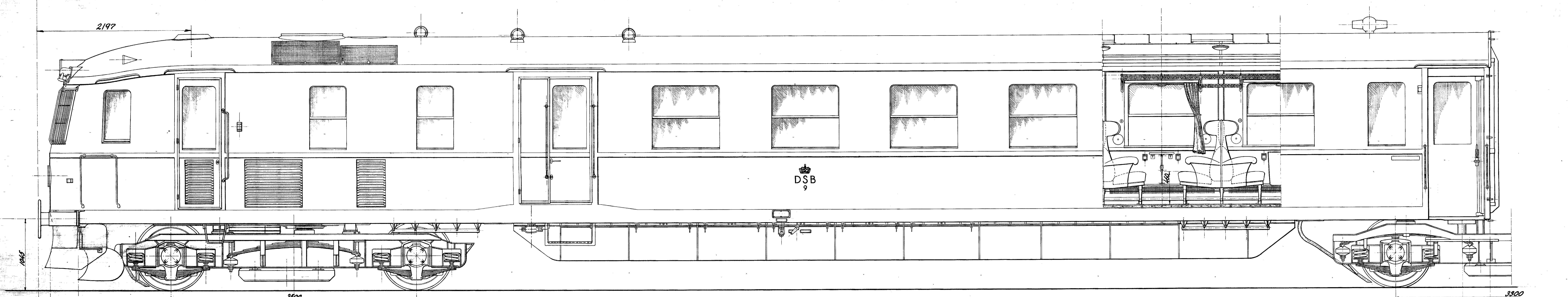


21906 til Skorsten for Varmekedel paa AB og FJ.



2. Ventilationskanal integreret 11-1-39 J.K.O. 6. Revideret 14-10-59 Hør Jensen	Maalestokke 1:25	Scandia Nr. 24300 Rev. L. H. Tegn.
	De danske Statsbaner Maskinafdelingen Diesel-elekt. Motorvogn Litra Ma Nr. 9-16	

HM.106