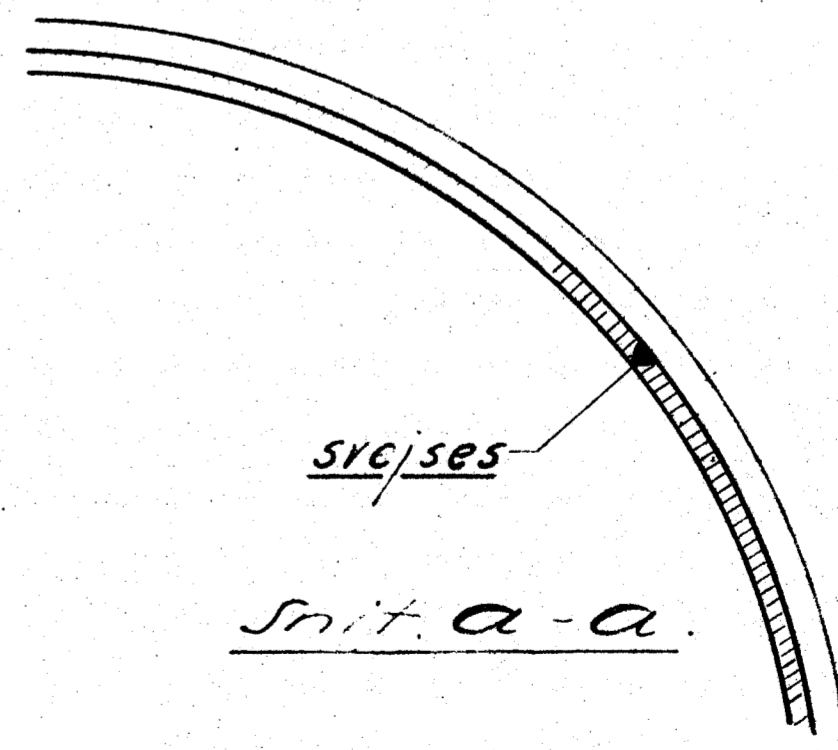
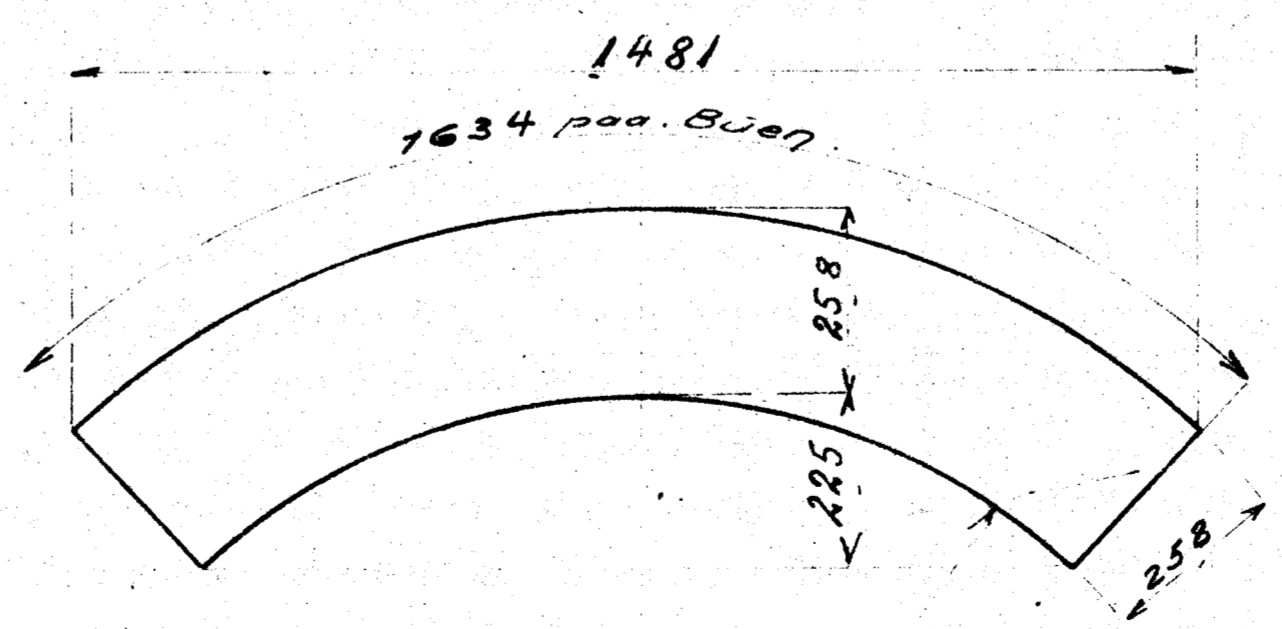
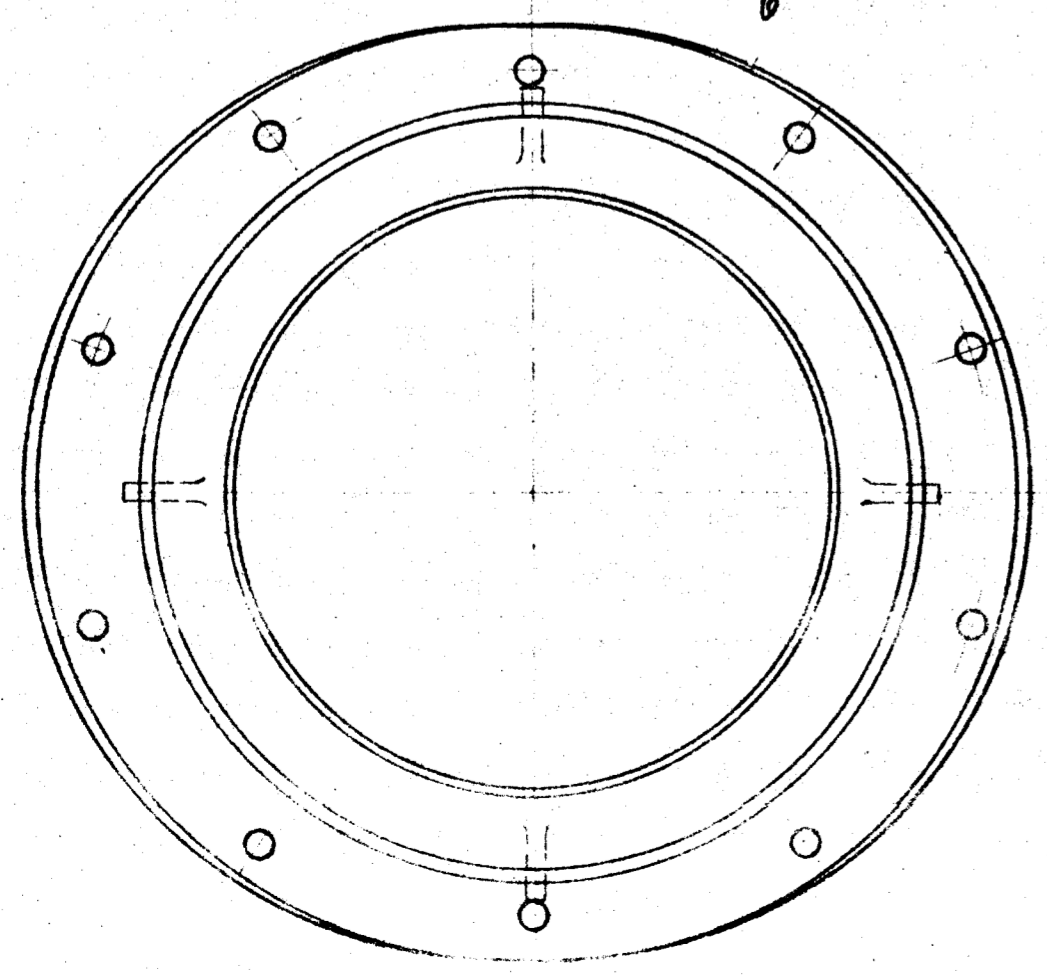
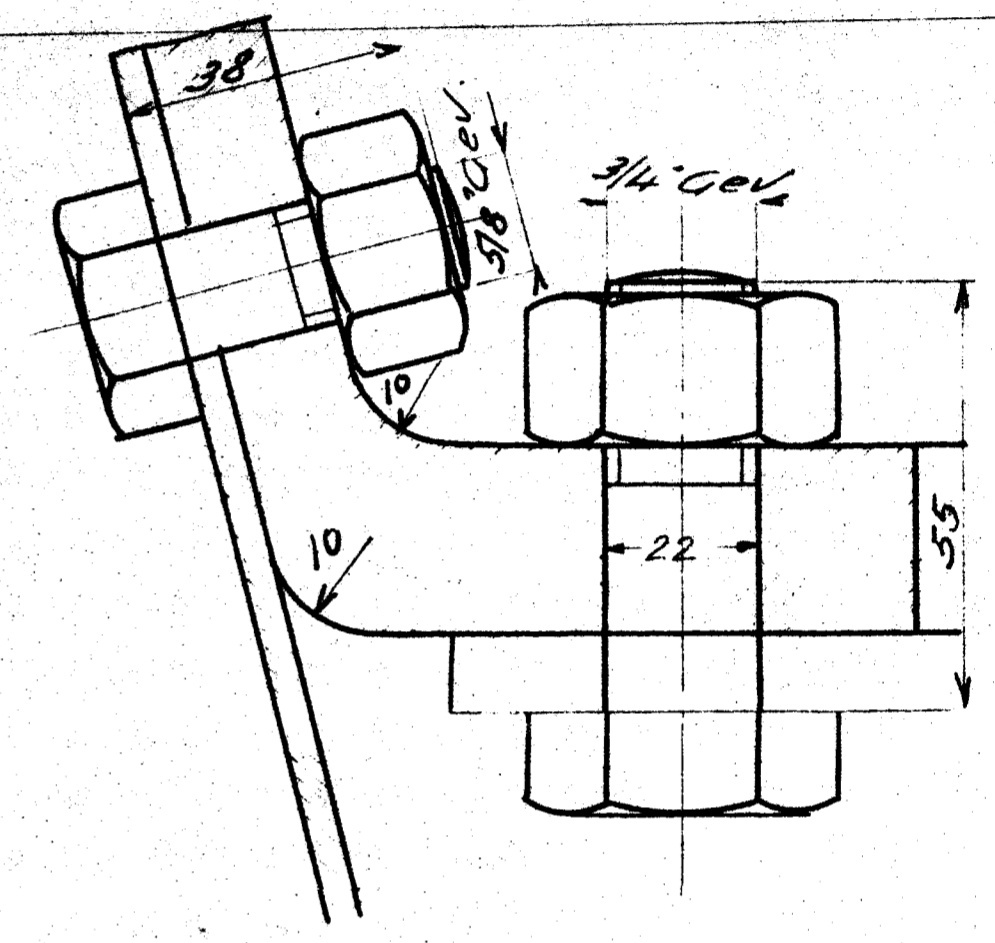
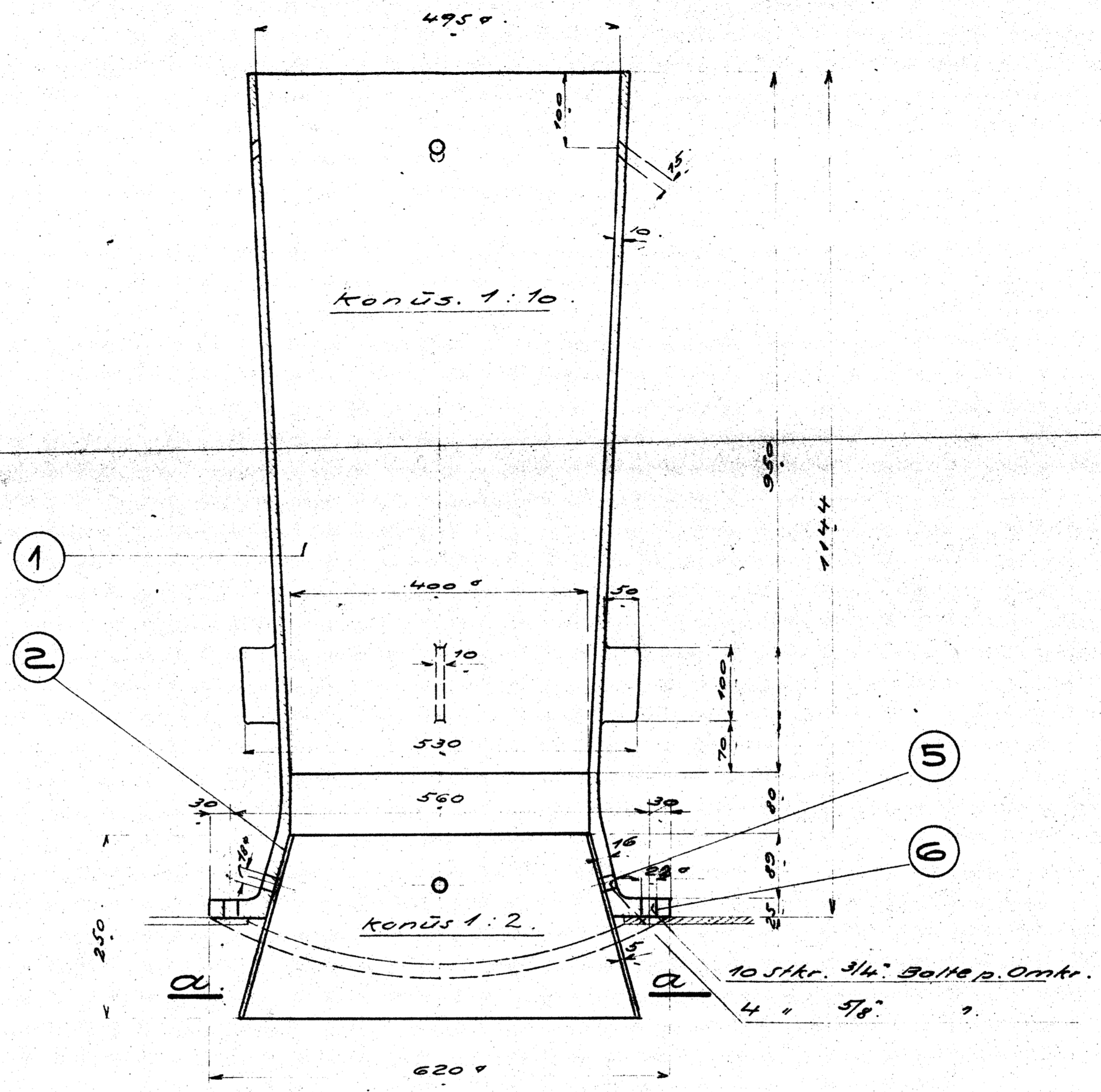
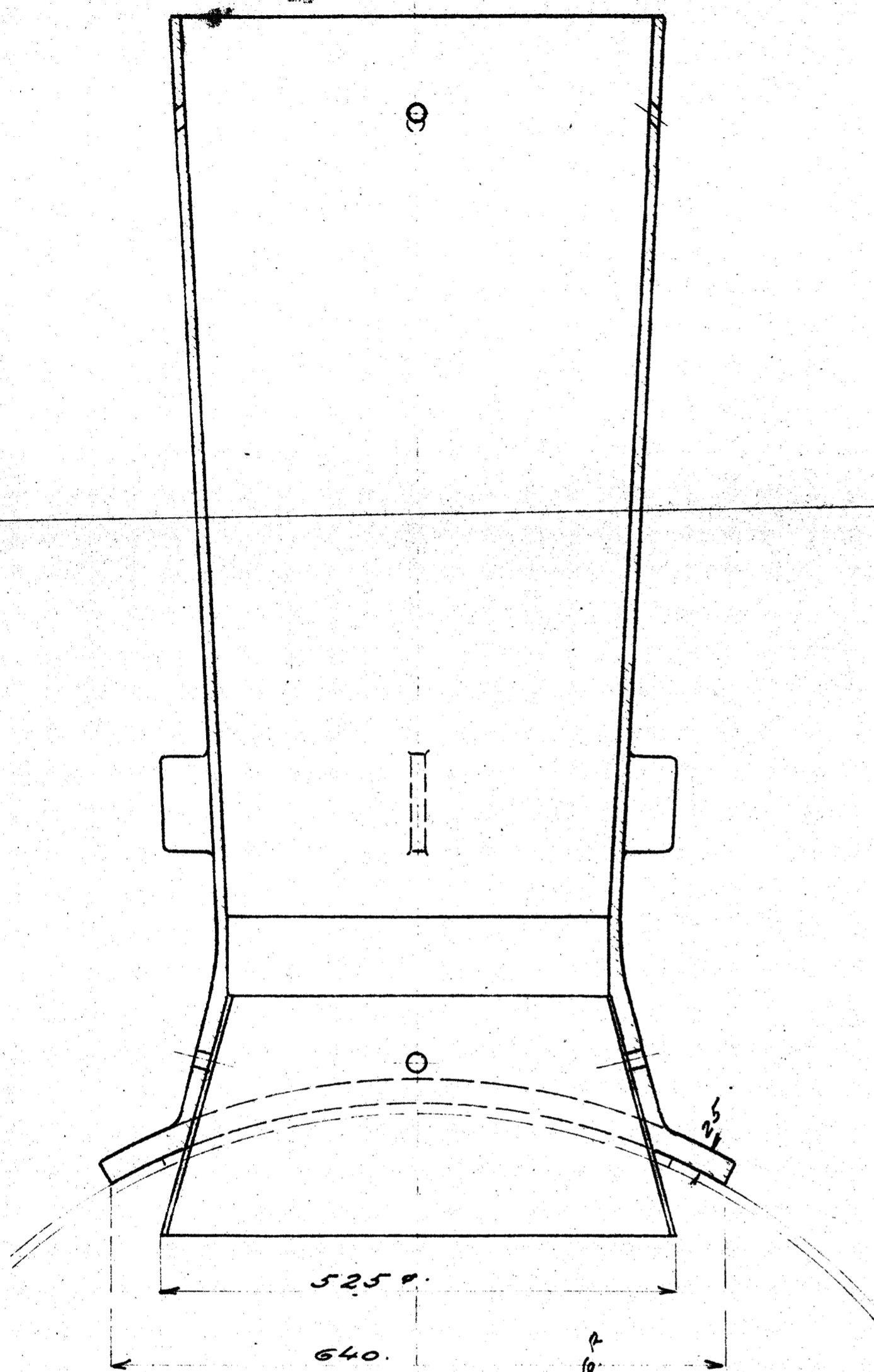


1	1 Skorsten.	Stål	231
2	1 Regfang.	Stål	1800-5m
3	1 Laste	Stål	57-5
4	8 Nagler 10 x 16	Stål	265
5	4 Bolte 7/8 se Teg. 91-29.956 M. 4. 7	Stål	807
6	10 do 3/4 " " " 91-29.956 M. 4. 7	Stål	807



Ferdige Maal. Maal: 1:10.

1:1	1:5
Skorsten.	Q 5.060
D-Tenderloko. Litra Q.	