

For holder til særtogslygte se tegn. Q_{II} 24.040.

For førerhusbagvæg til loko. ltr. Q_I, se tegn. Q 86, plan II.

For bagvinduer, se tegn. Q_{II} 15.190.

Holder f. Haandsu. til Upperist
Se tegn. 9L 24.184
Q 8g

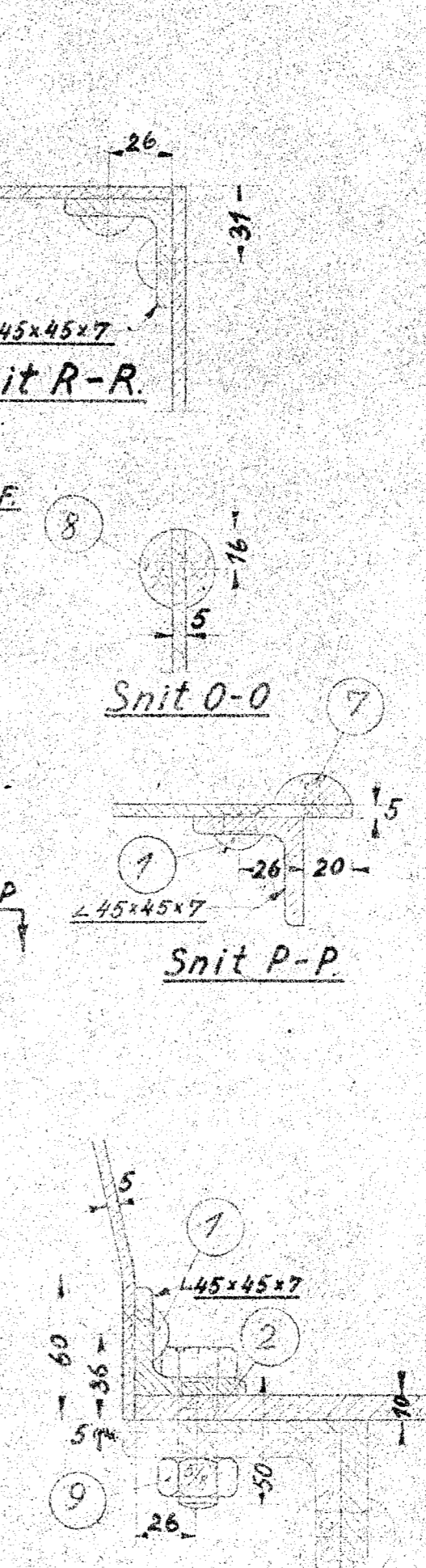
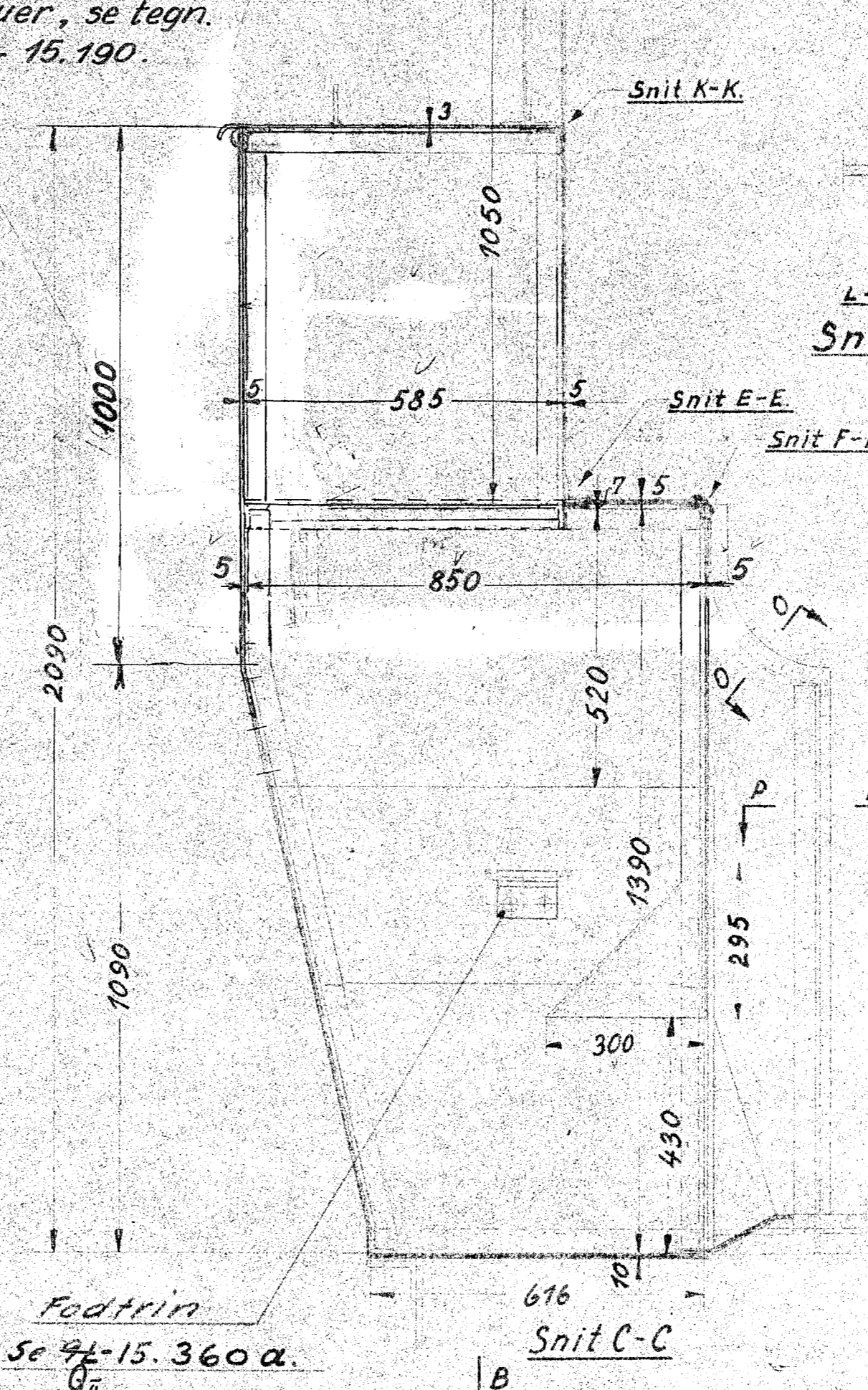
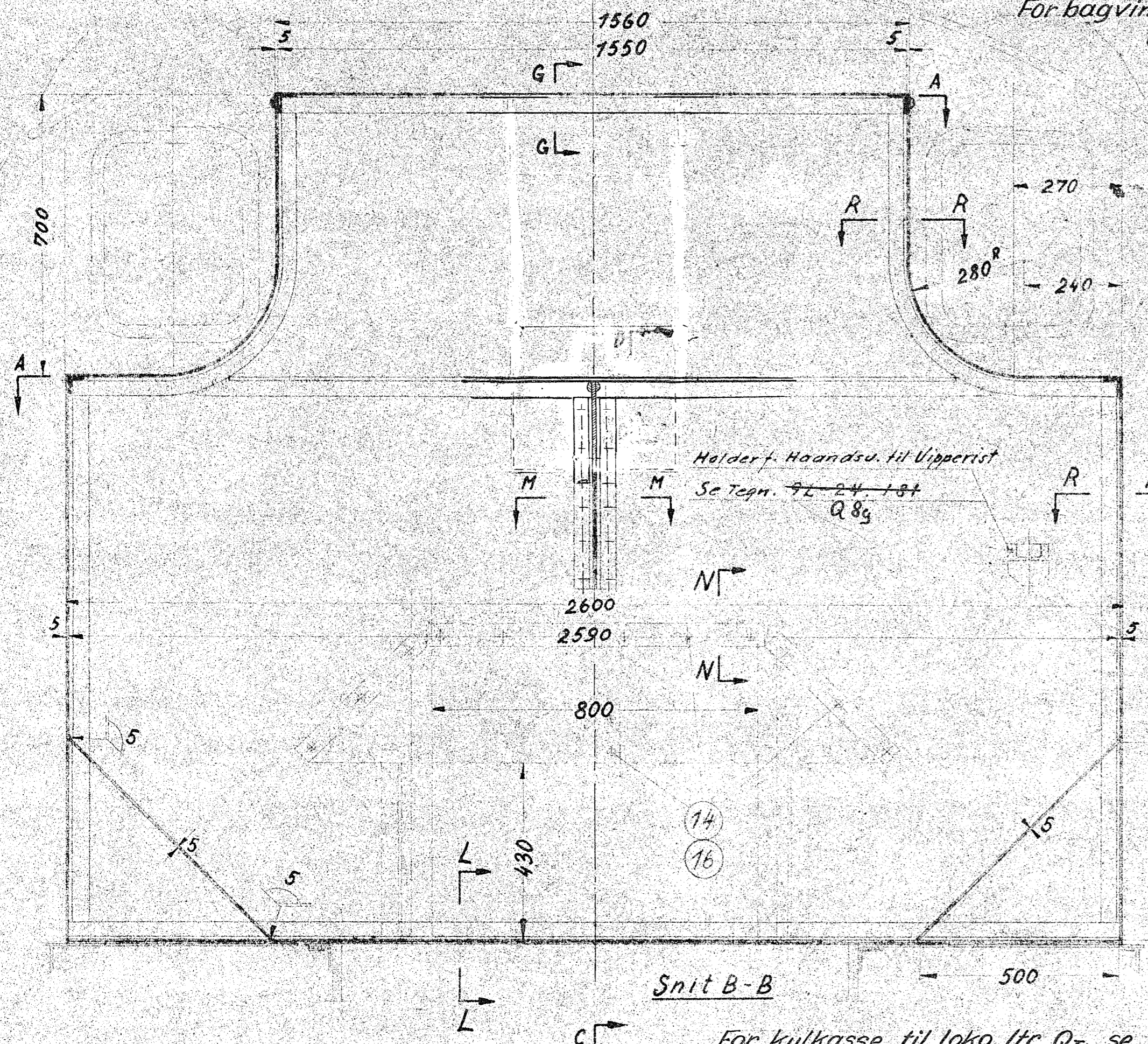
For kulkasse til loko. ltr. Q_I, se tegn. Q 96 plan I og II.

Fodtrin
Se 9L-15.360a.
Q_{II}

Lygteholder
Tegn. 9L-24.040.
Q_{II}

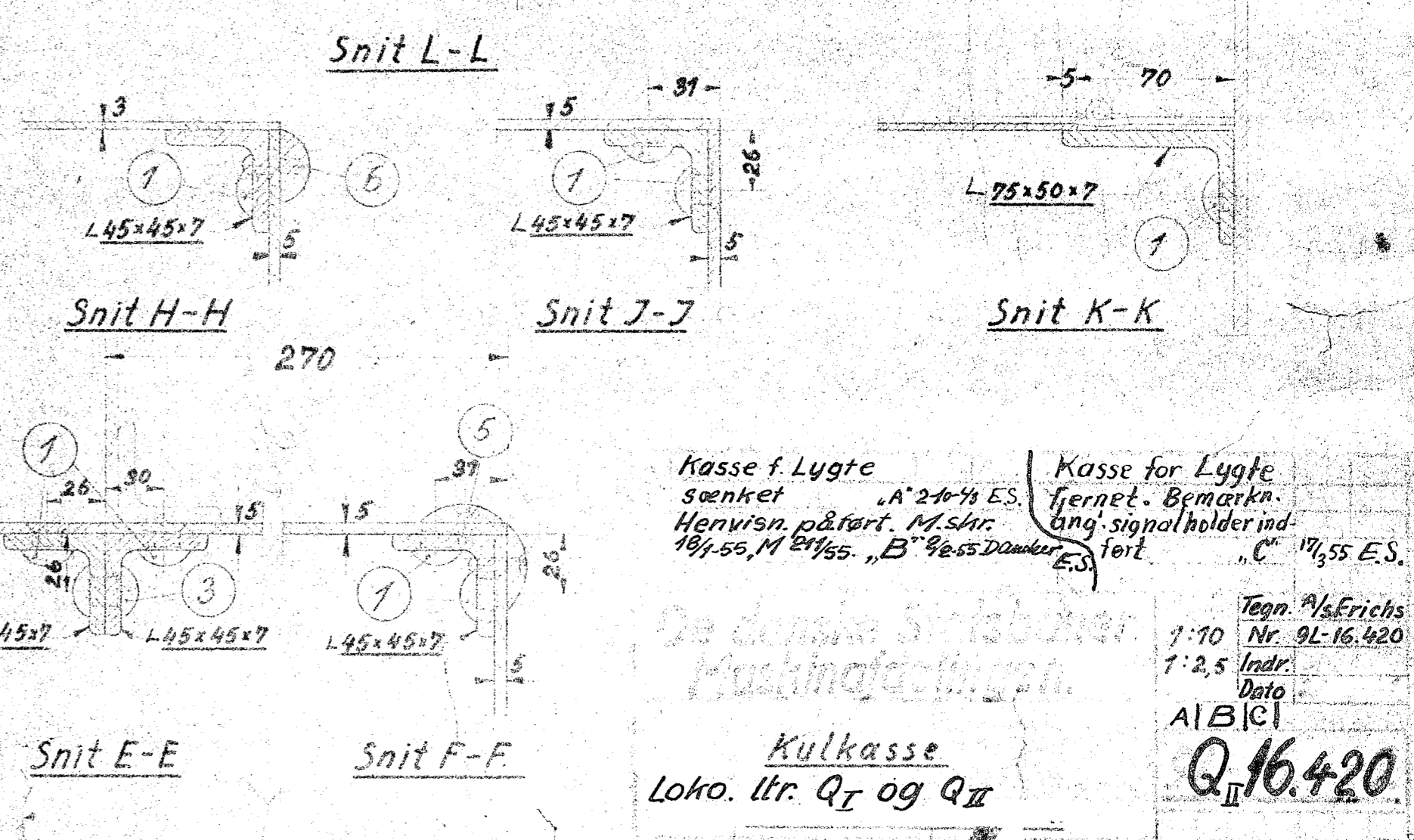
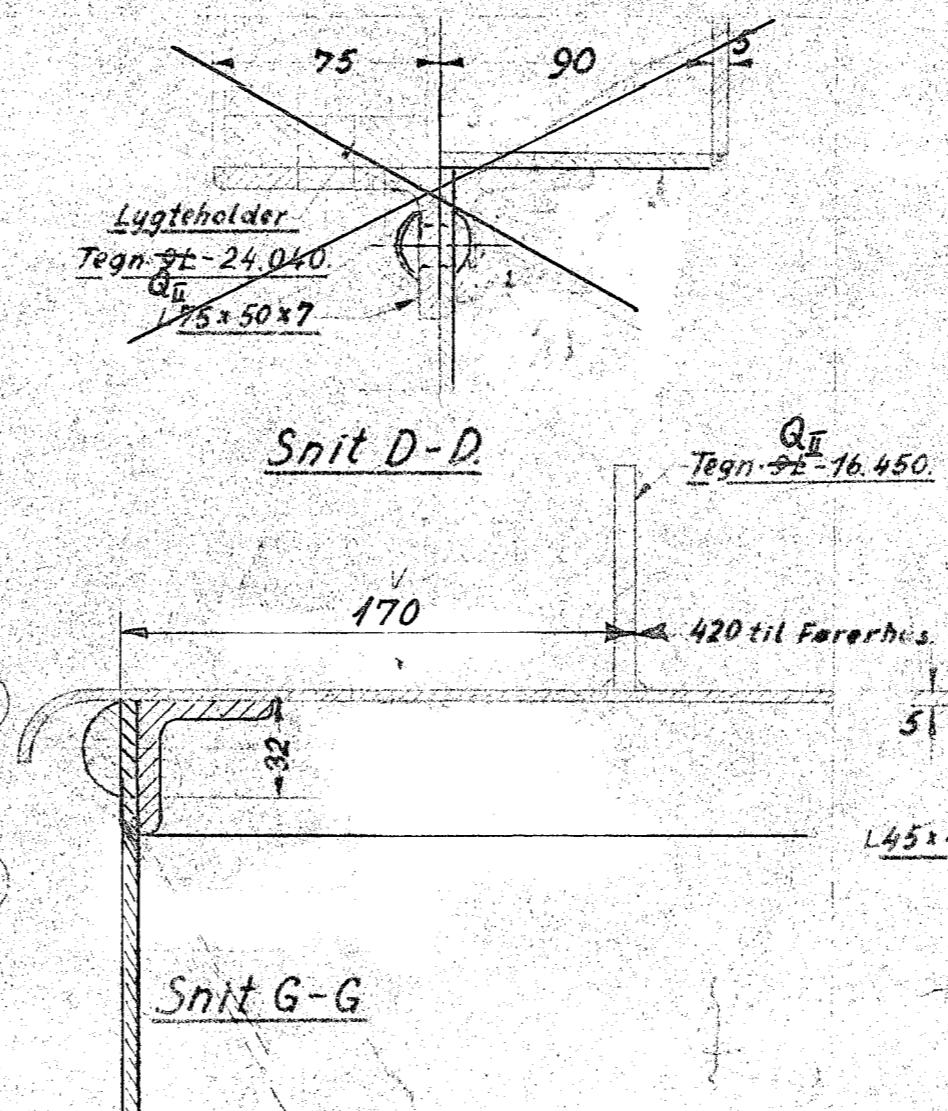
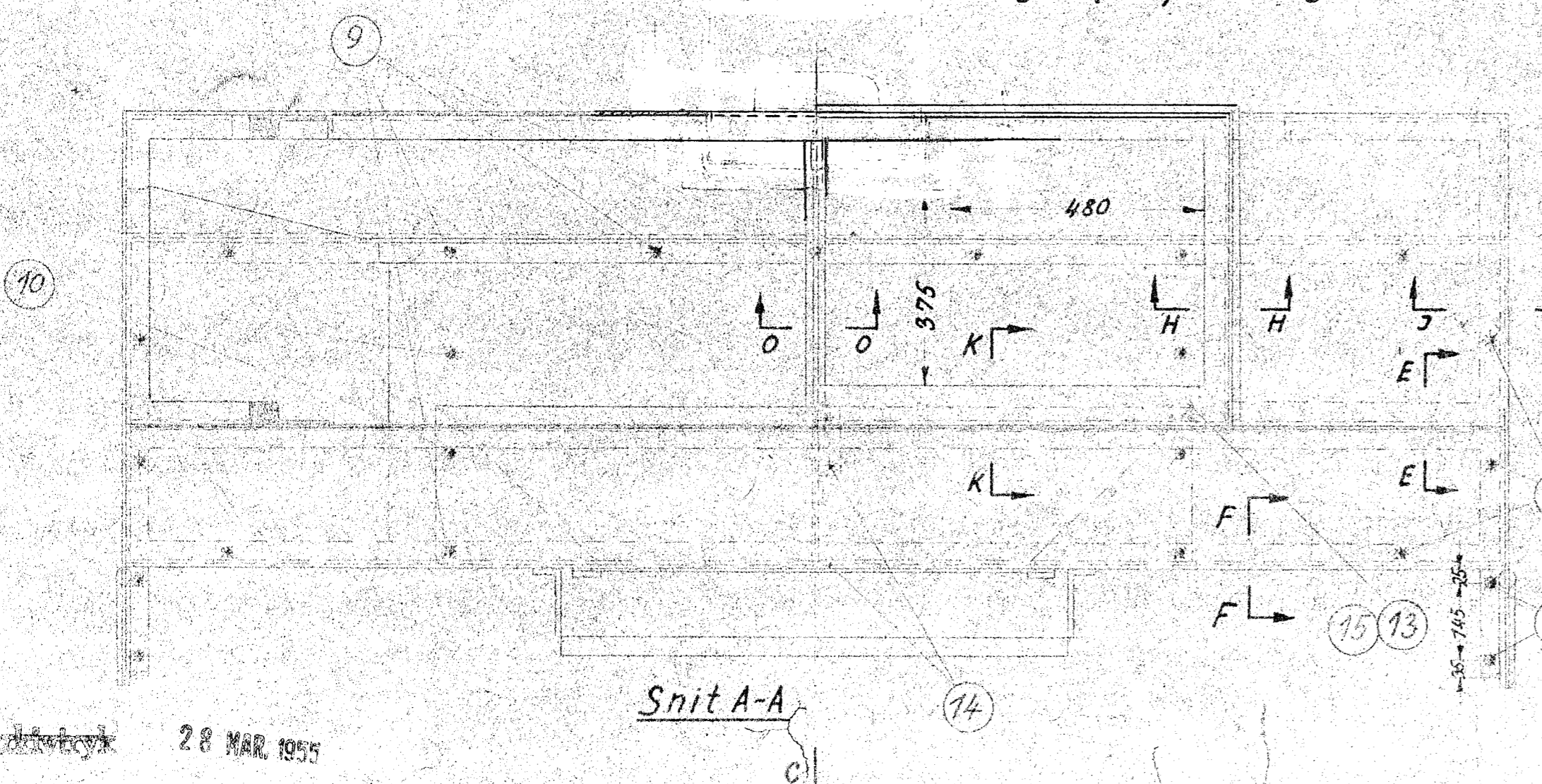
Q_{II}
Tegn. 9L-16.450.

Q_{II}
Tegn. 9L-16.450/20.
Tegn. 9L-16.710



42195

414	Nagle	1/2" x 22	1	Q	Nitte/ Magasin
56	"	" x 28	2	"	"
6	"	" x 32	3	"	"
12	"	" x 40	4	"	"
33	"	1/4" x 28	5	"	"
22	"	" x 32	6	"	"
18	"	" x 25	7	"	"
20	"	" x 40	8	"	"
9	Bolt	1/2" Matr. 5/8 x 50	9	"	Flussj
4	"	" x 45	10	"	"
6	"	" x 40	11	"	"
4	"	" x 30	12	"	"
12	"	1/4" x 18	13	"	"
16	Skrue	1/2" Hunders H. 1/2 x 24	14	"	"
12	Nagel	til Laag 1/4" x 15	15	"	"
16	Matrik	1/2" x 13 høj. 16	16	"	"



Kasse f. Lygte
sænket
Henvisn. på fører. M. s. Nr. 184-55, M. 24/55.

Kasse for Lygte
Tjernet. Bemærkn.
ang. signalholder ind.
før.
"C" Nr. 17,55 E.S.

Tegn. 9L-Erichs
Nr. 9L-16.420
1:2,5
Indr.
Date
AIBICI
Q_{II} 16.420