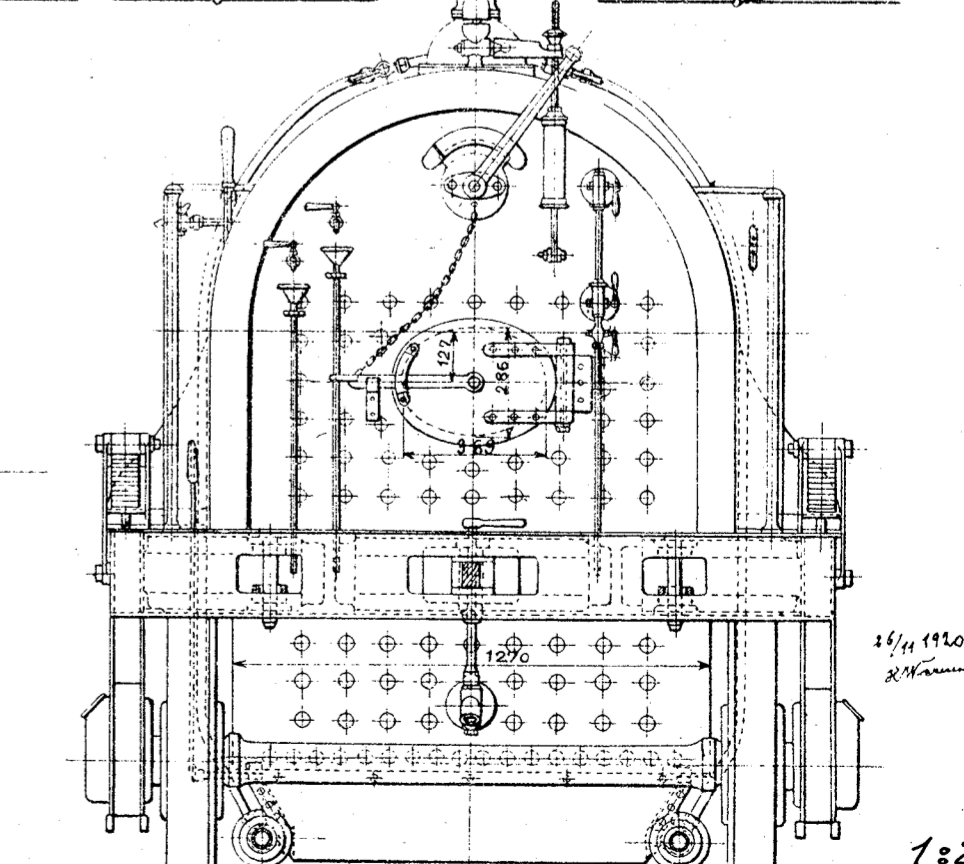
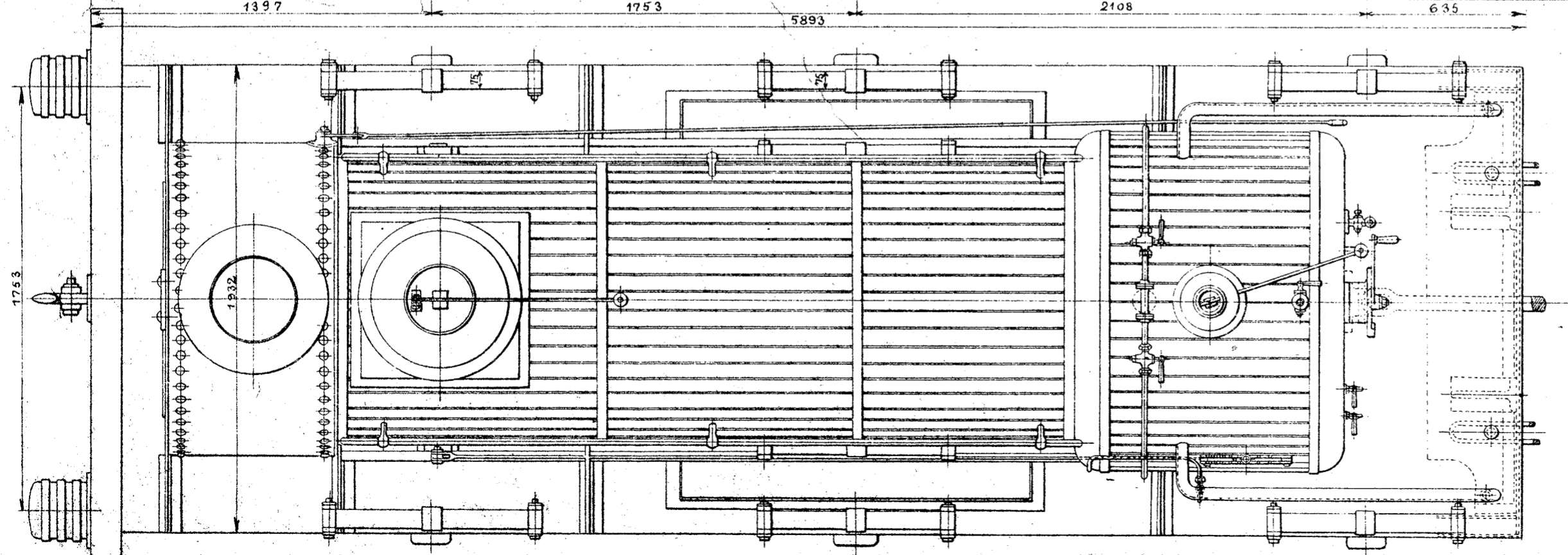
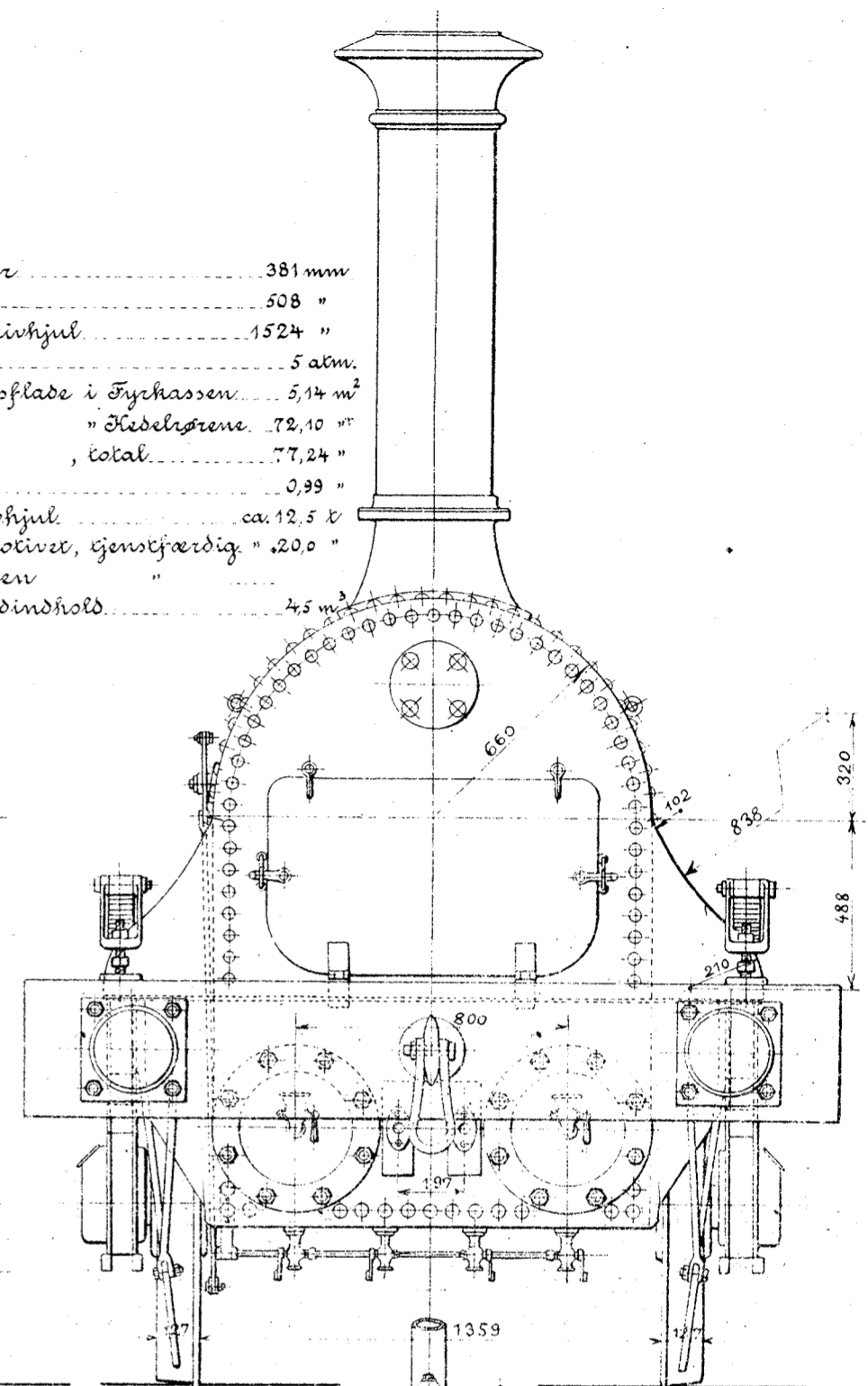
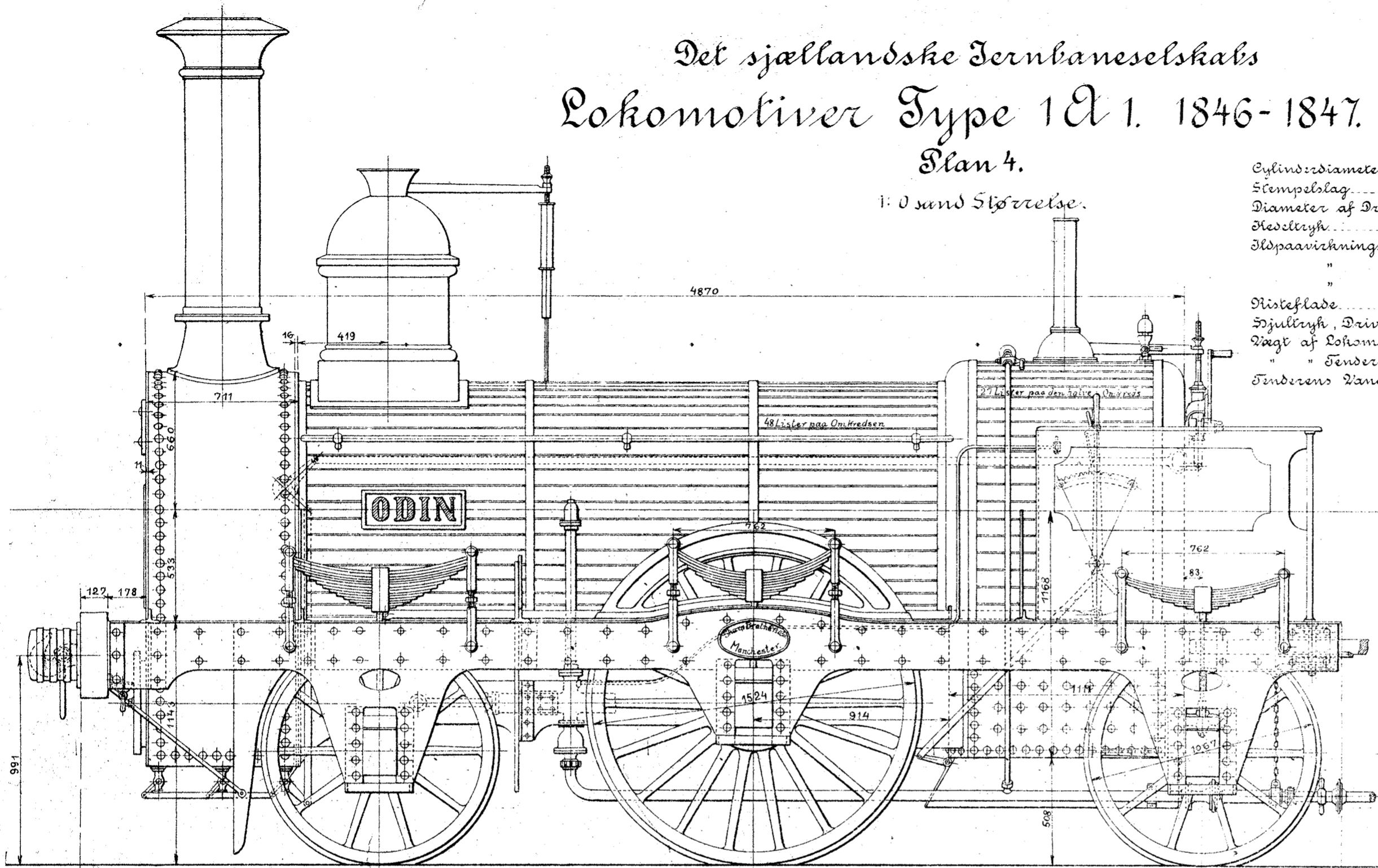


Det sjællandske Jernbaneselskabs Lokomotiver Type 1 A 1. 1846-1847.

Plan 4.

1:0 sind Skjærelse.

Cylinderdiameter	381 mm
Stempelslag	508 "
Diameter af Drivhjul	1524 "
Kedeltryk	5 atm.
Ildpaavirkningsflade i Fykhassen	5,14 m ²
" " Kedelrørene	72,10 "
" " , total	77,24 "
Risteplade	0,99 "
Hjultryk, Drivhjul	ca. 12,5 t
Vægt af Lokomotivet, jernfærdig	20,0 "
" " Tenderen	"
Tenderens Vandindhold	4,5 m ³



14/11 1846
R. Hansen

1:20

50.2.203 f.

V. Hansen
København
1847