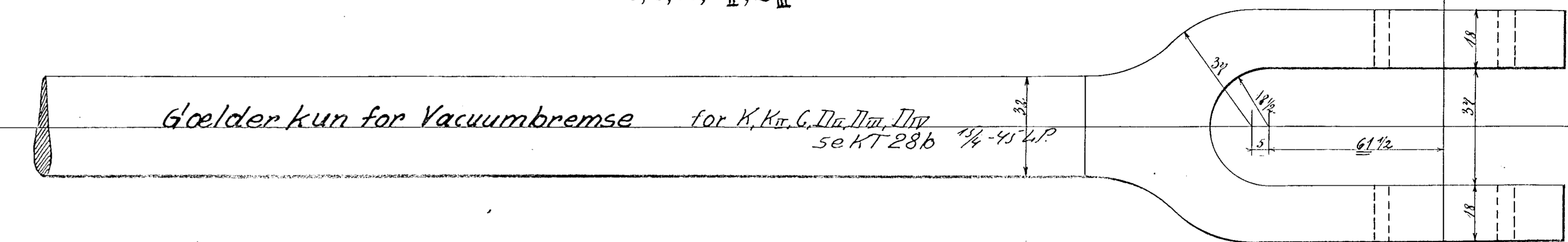
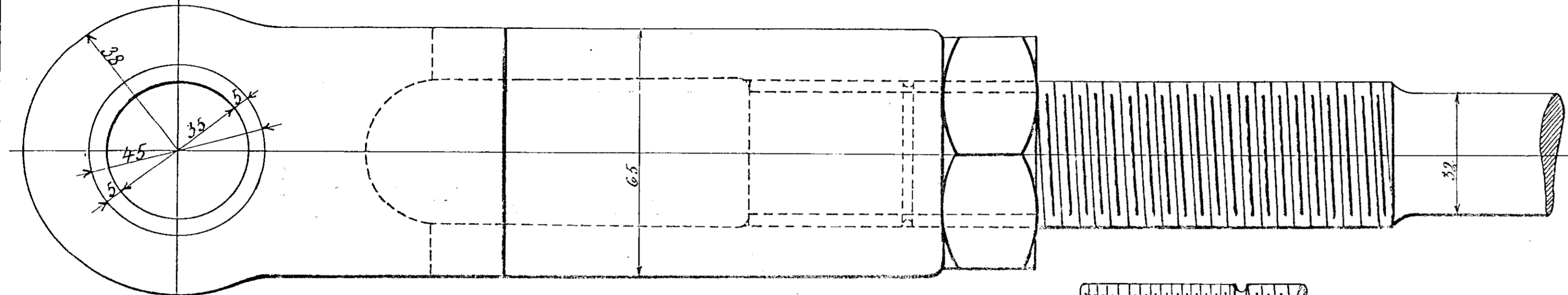


Goelder kun for Vacuumbremse

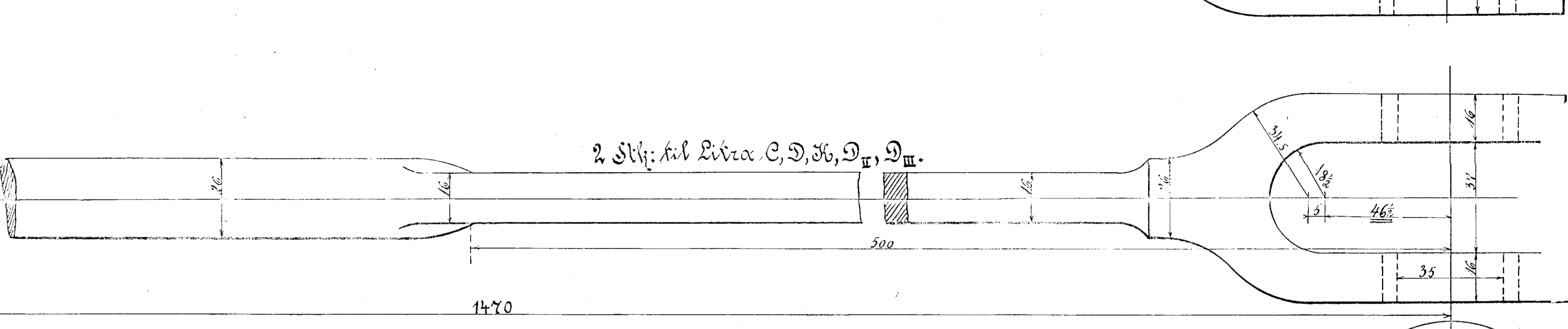
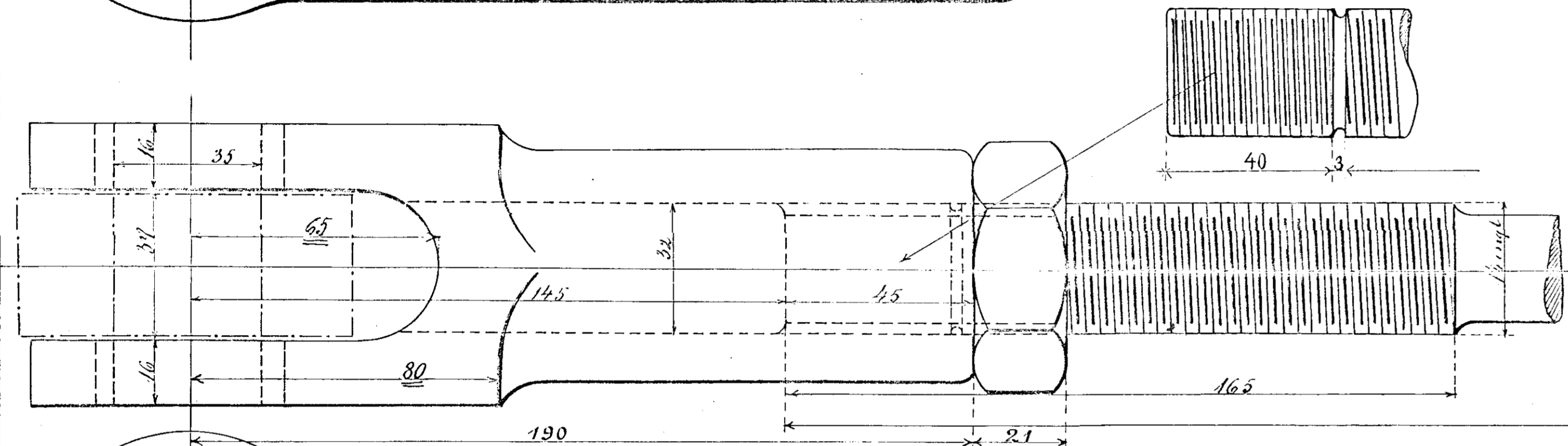
2 Stk. til 880 til Litra B, R, R_{II}.

2 " " 970 " " C, D, B, D_{II}, D_{III}

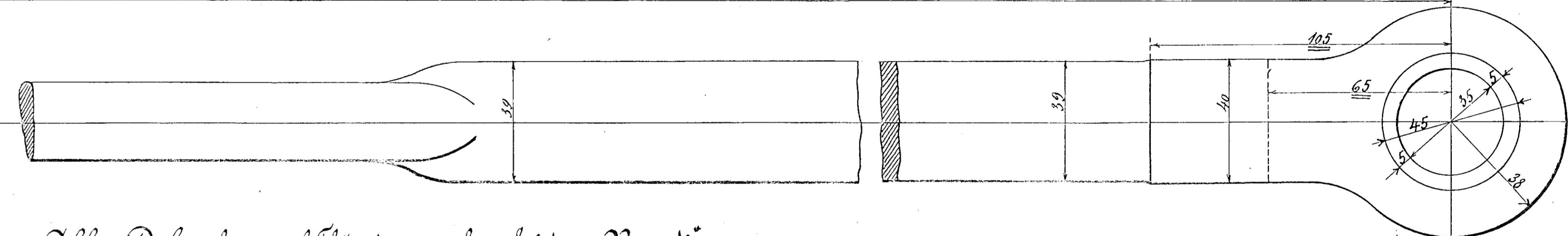
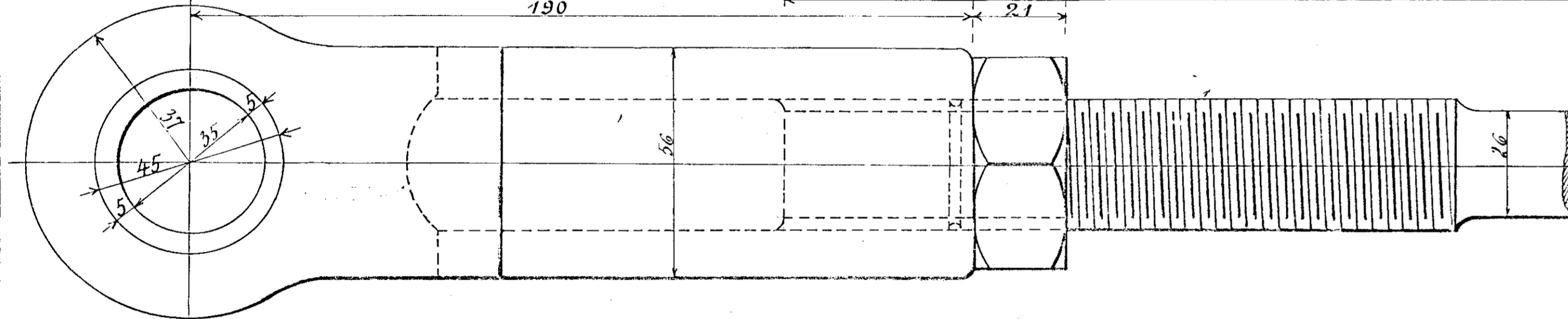


Goelder kun for Vacuumbremse for K, K_{II}, C, D_{II}, D_{III}, D_{IV}

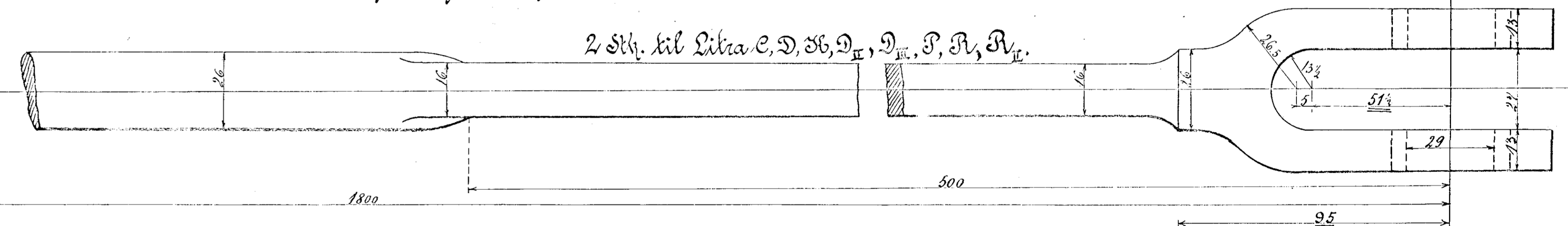
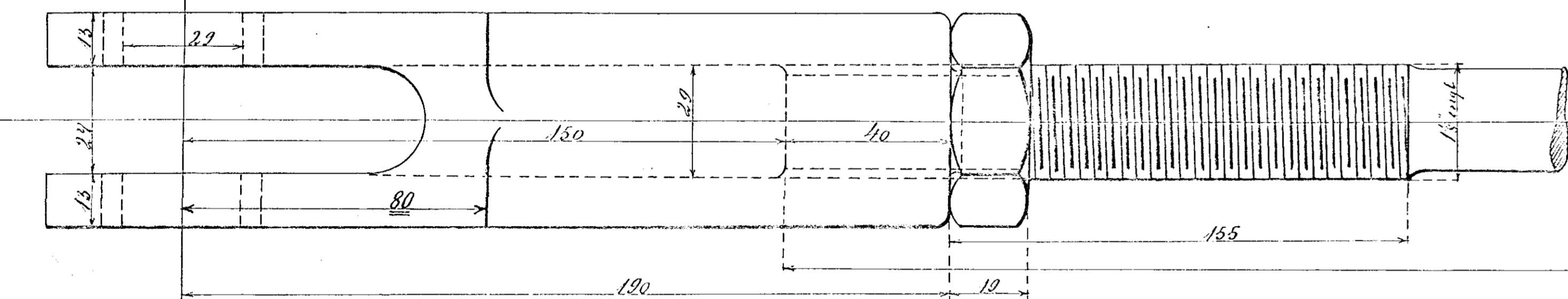
5e KT 28b 1/4-4 1/2 P



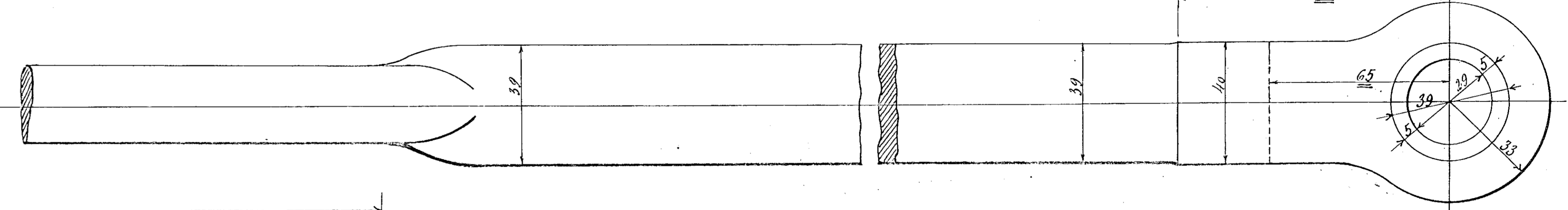
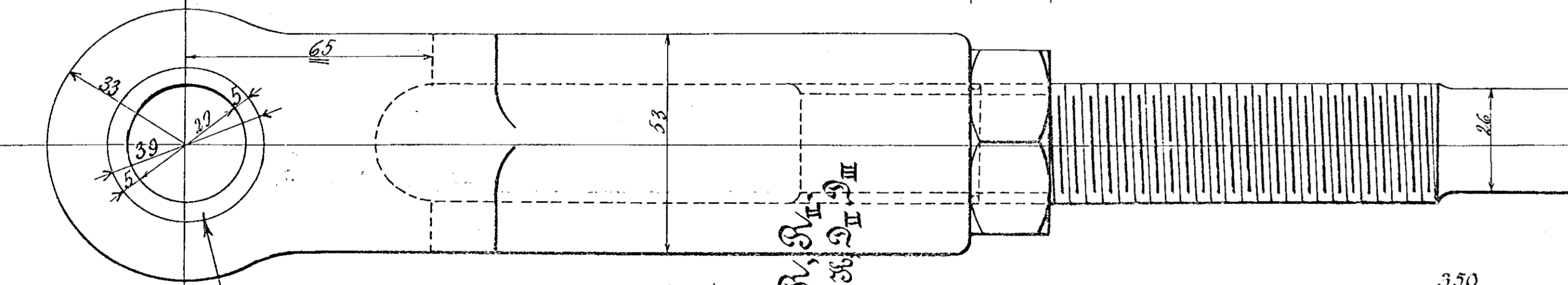
2 Stk. til Litra C, D, B, D_{II}, D_{III}.



Alle Dele laves af Flussjern og bearbejdes „Rent“.



2 Stk. til Litra C, D, B, D_{II}, D_{III}, P, R, R_{II}.



Danske Statsbaner - Maskinafdelingen.

Trækstanger til Bremseløjet

Sender, Litra K, D_{II}, C, B, D_{II}, D_{III}, R, R_{II}, K_{II}

(For Litra P, R, R_{II} m. Trykluffbremse se Tegn. P.T. 28)

København, September 1895 - Maskinchefen.

25/1911
20/11/11

skolekassen

Alle Bøsninger laves af Flussjern „Daardt“

4 Stk. til Litra C, D, K, D_{II}, D_{III}
2 " " " P, R, R_{II}.

